

City of West Allis



Organizational Chart

2012

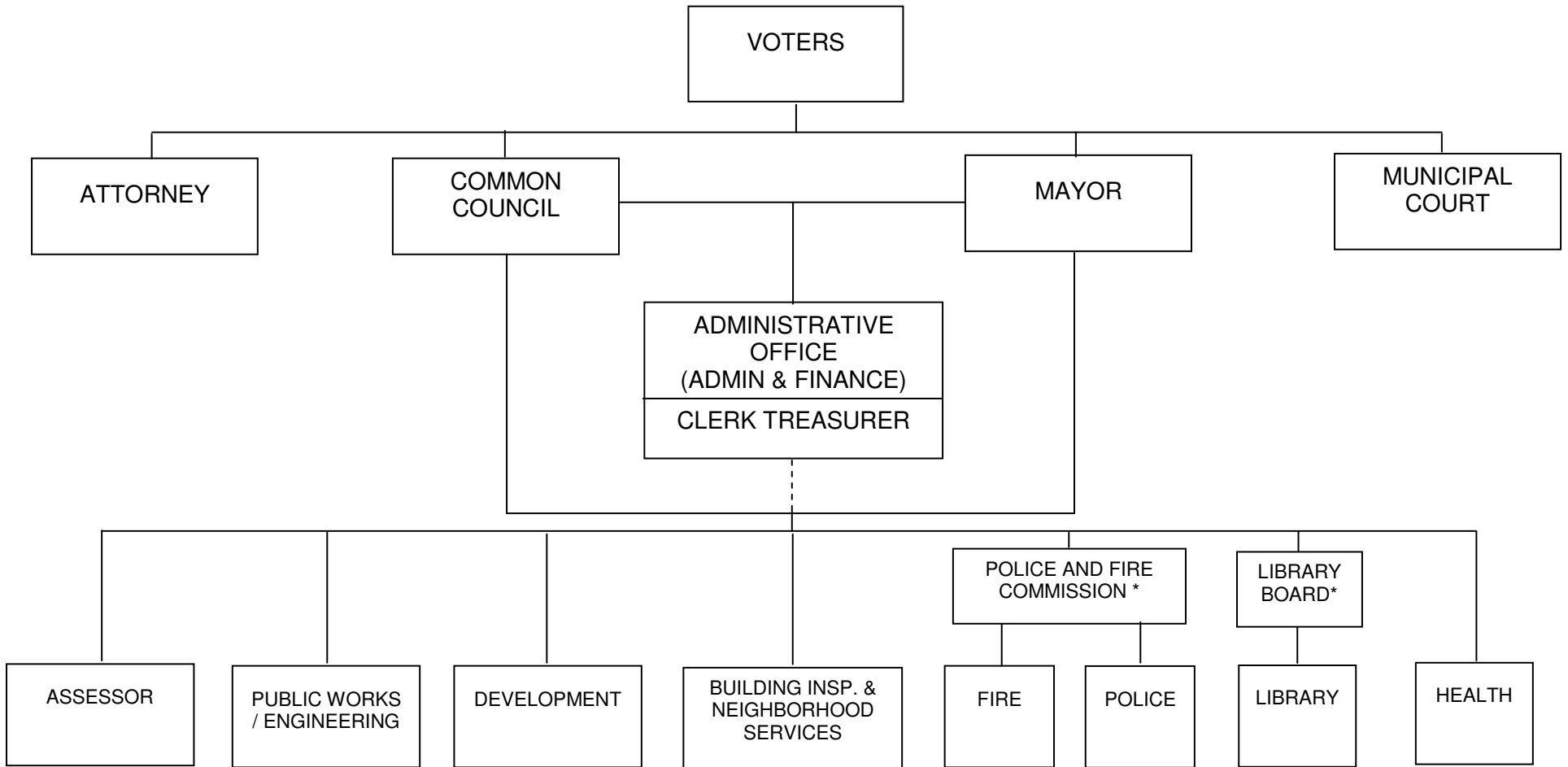
ORGANIZATIONAL CHARTS

January 1, 2012

	<u>Page</u>
City of West Allis.....	1
Council Policy Committees.....	2
Advisory Committees.....	3
Mayor	4
Assessor.....	5
Attorney	6
Building Inspections & Neighborhood Services	7
City Administrative Office/ (Administration & Finance)	8
Cable Communications	9
Clerk/Treasurer.....	10
Finance.....	11
Human Resources.....	12
Information Technology	13
Purchasing/Central Services	14
Development	15
Community Development	16
Planning and Zoning.....	17
Fire	18
Health.....	19
Health Administrative Services	20
Community Health Services	21
Environmental Health & Consumer Protection	22
Interdisciplinary Health Services.....	23
Senior Center	24
Library	25

	<u>Page</u>
Municipal Court.....	26
Police.....	27
Public Works / Engineering.....	28
Administrative Office.....	29
Building / Inventory and Electrical Services.....	30
Fleet Services.....	31
Forestry & Grounds	32
Sanitation & Streets.....	33
Water	34
Engineering	35

**ORGANIZATIONAL CHART
CITY OF WEST ALLIS**

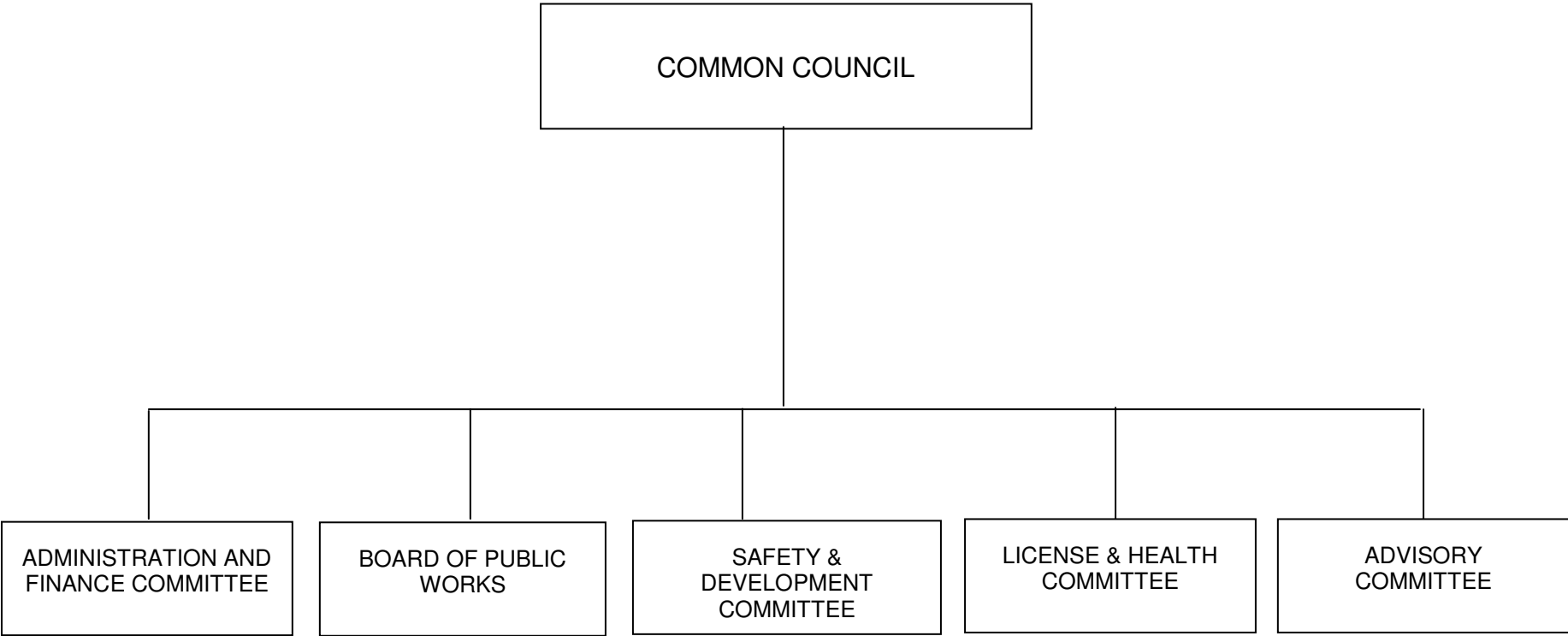


*Appointed by the Mayor and confirmed by the Common Council, with policy responsibility.

Note: Solid lines indicate direct lines of authority.
Dashed lines indicate indirect lines of administration.

Regular positions for 2012 budget: 514.08 City FTE

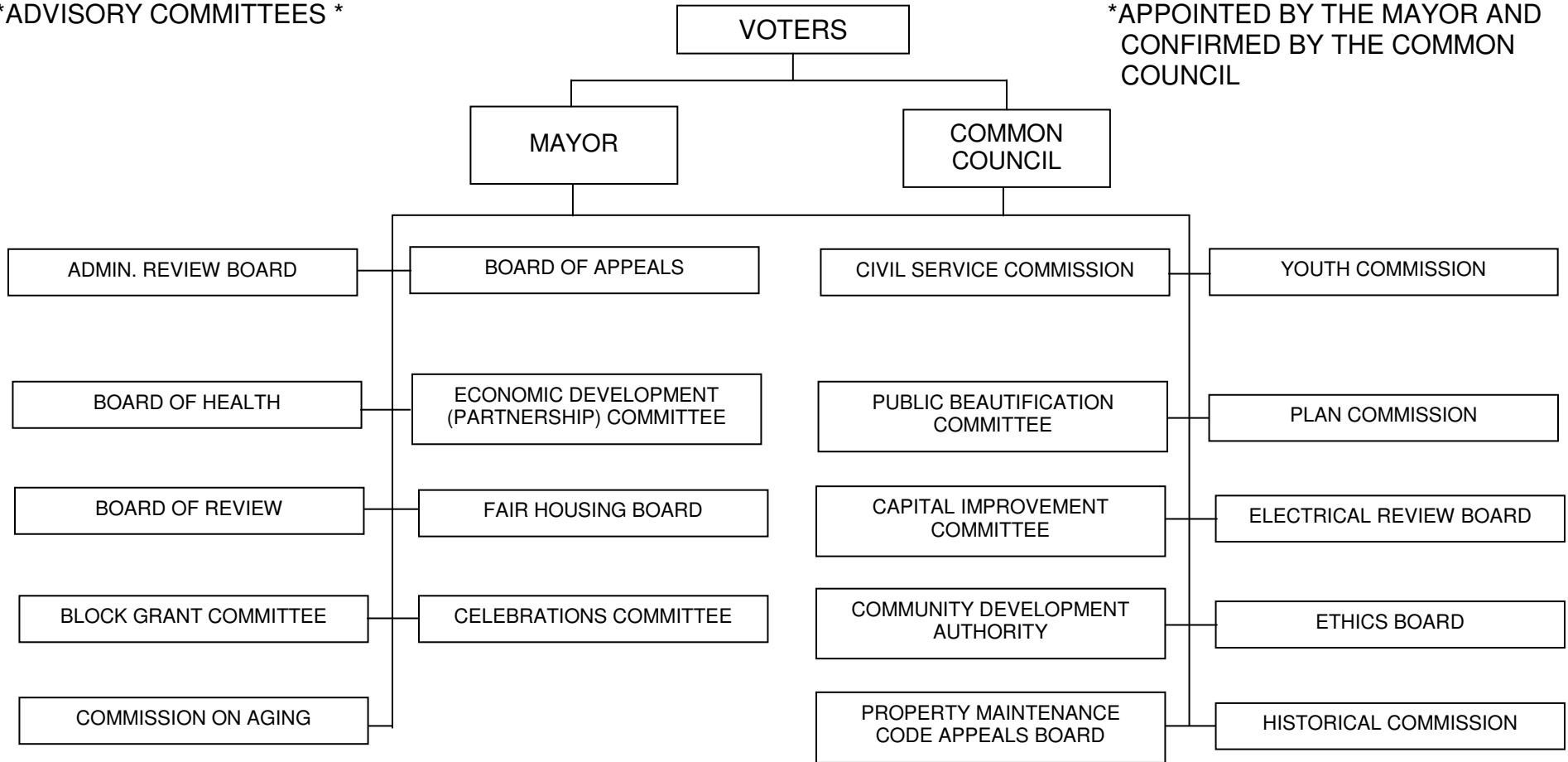
**ORGANIZATIONAL CHART
COUNCIL POLICY COMMITTEES**



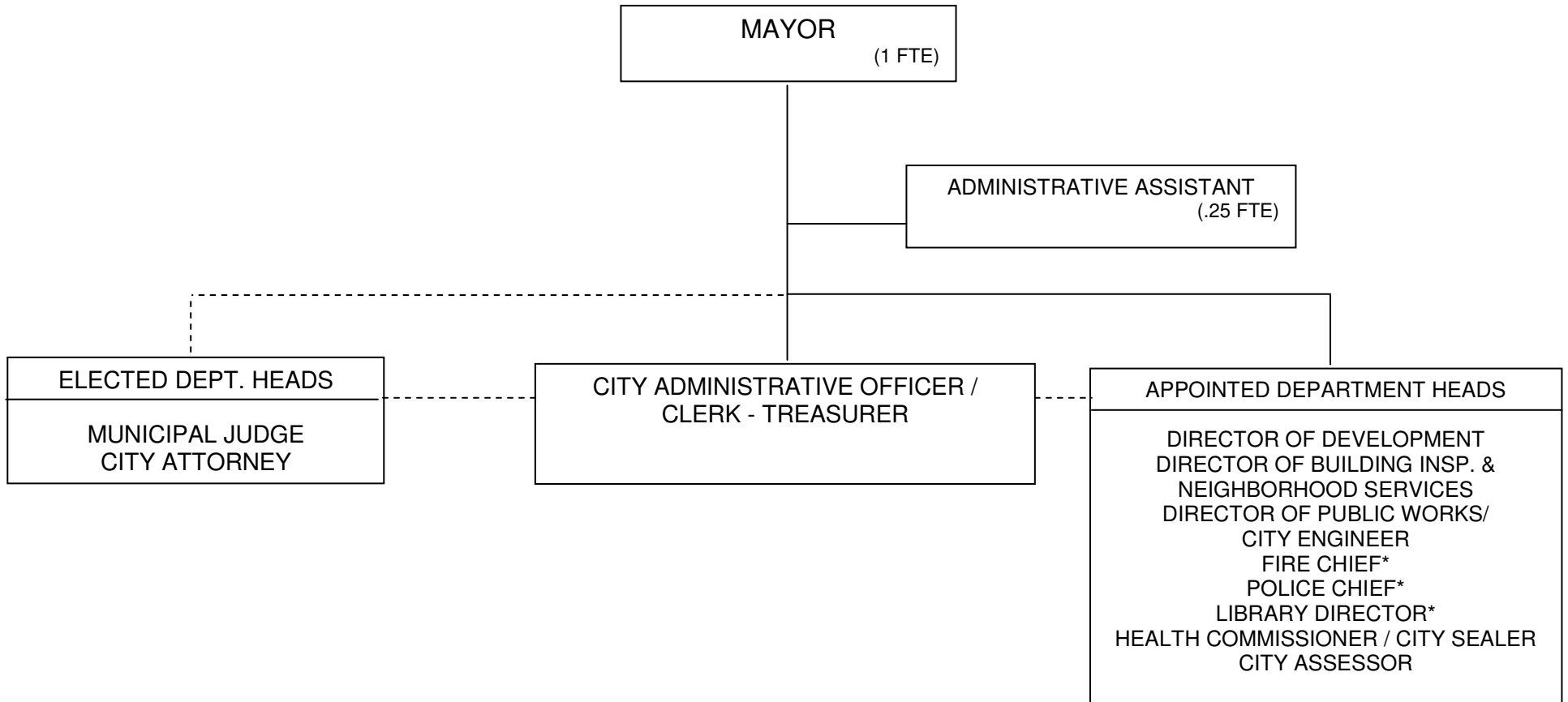
**ORGANIZATIONAL CHART
CITY OF WEST ALLIS
ADVISORY COMMITTEES**

*ADVISORY COMMITTEES *

*APPOINTED BY THE MAYOR AND
CONFIRMED BY THE COMMON
COUNCIL



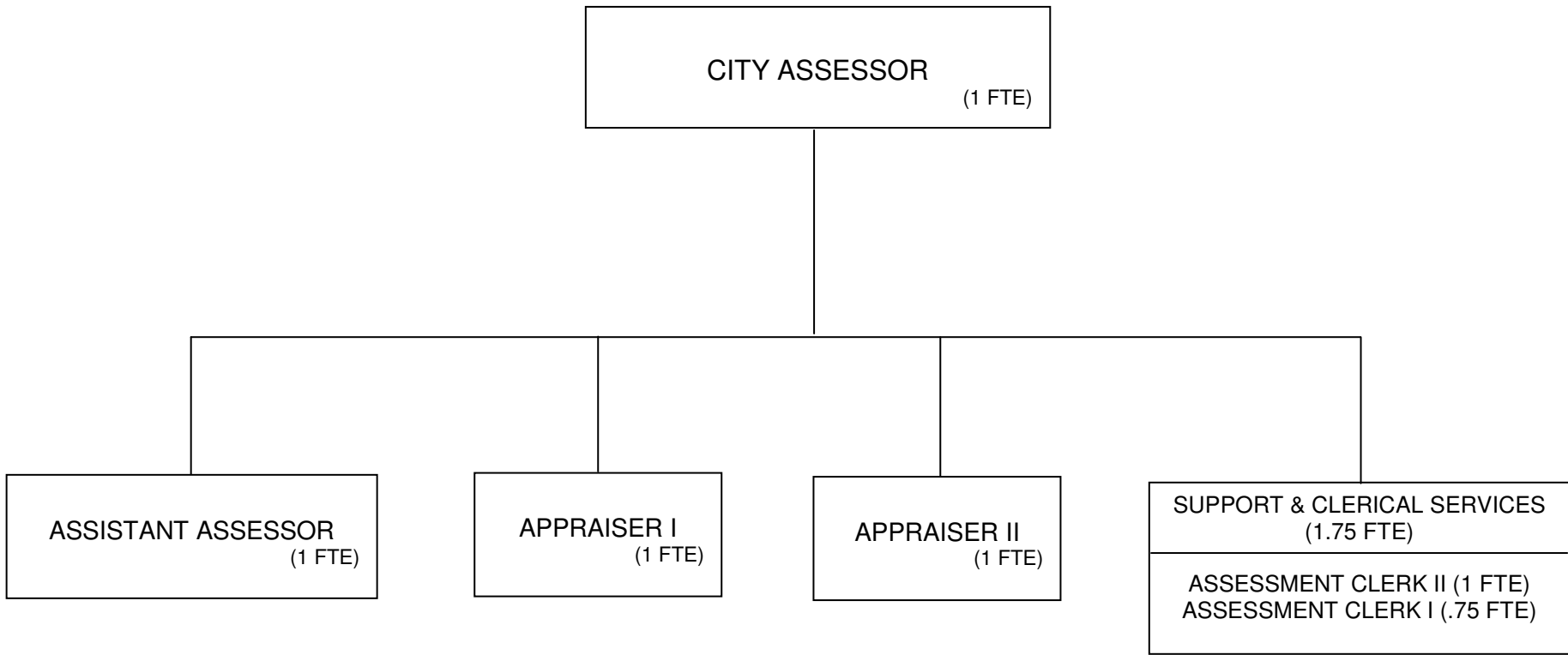
**ORGANIZATIONAL CHART
MAYOR**



*Reports directly to Police & Fire Commission and Library Board respectively.

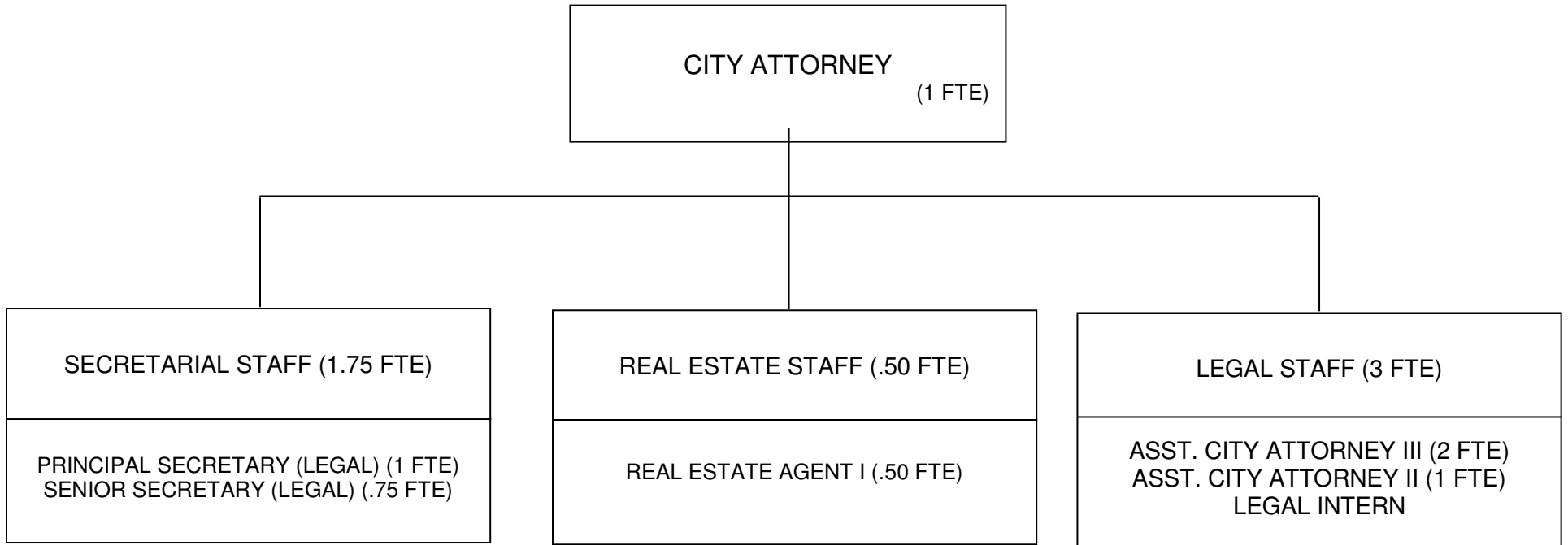
TOTAL POSITIONS: 2 (1.25 FTE)

**ORGANIZATIONAL CHART
ASSESSOR**



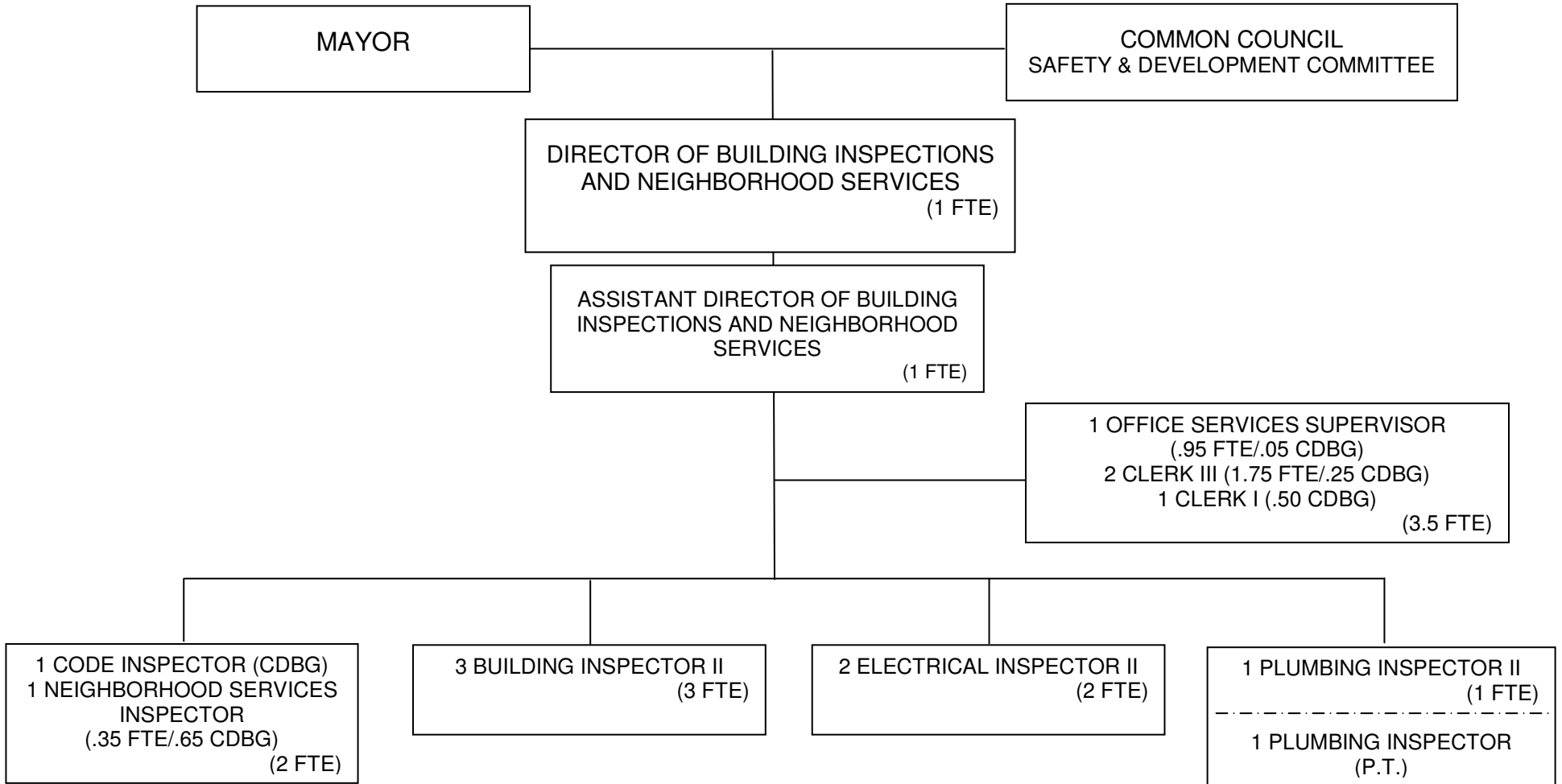
TOTAL POSITIONS: 6 (5.75 City FTE)

**ORGANIZATIONAL CHART
ATTORNEY**



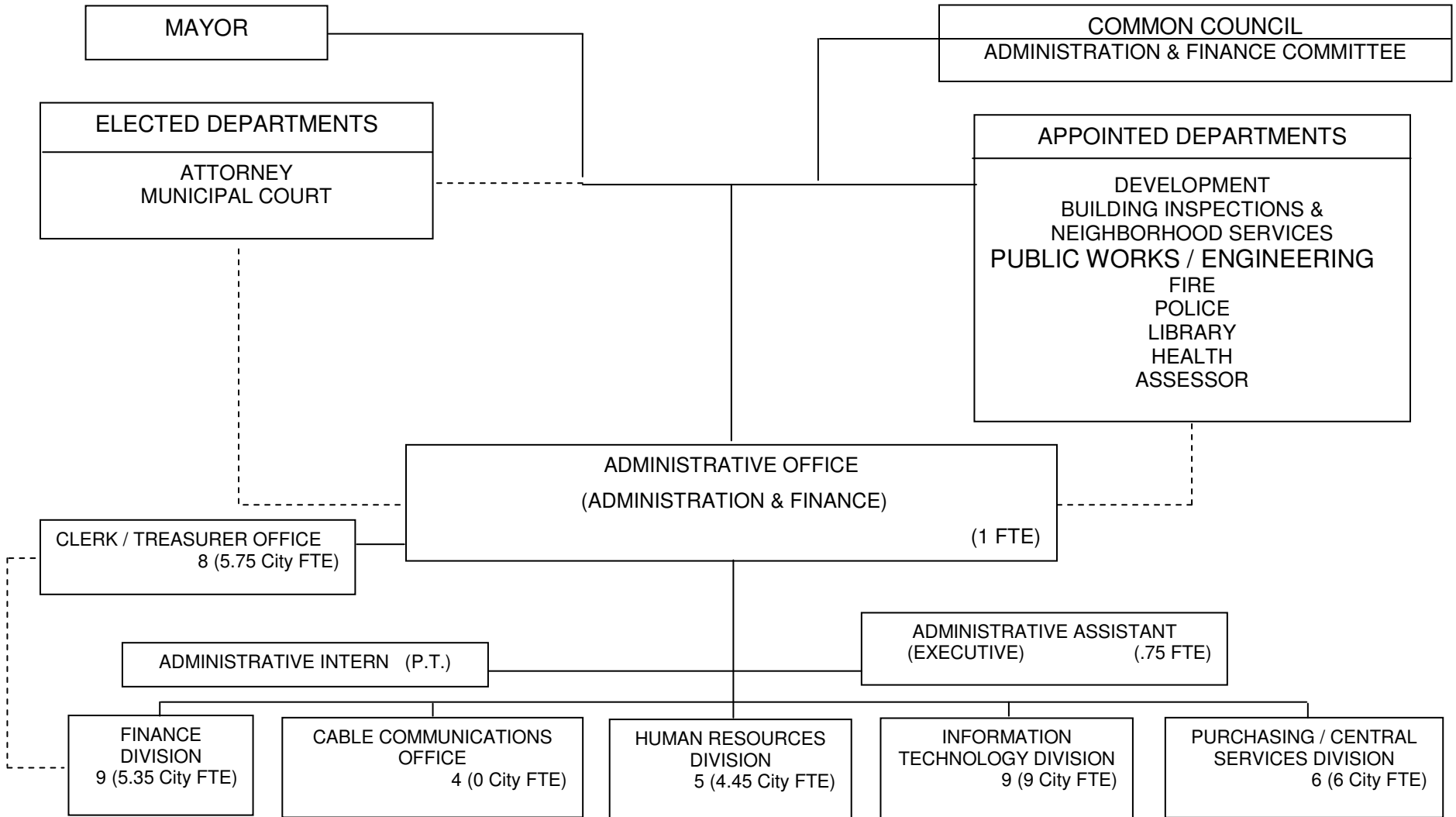
TOTAL POSITIONS: 7 (6.25 City FTE)

**ORGANIZATIONAL CHART
BUILDING INSPECTIONS AND NEIGHBORHOOD SERVICES**



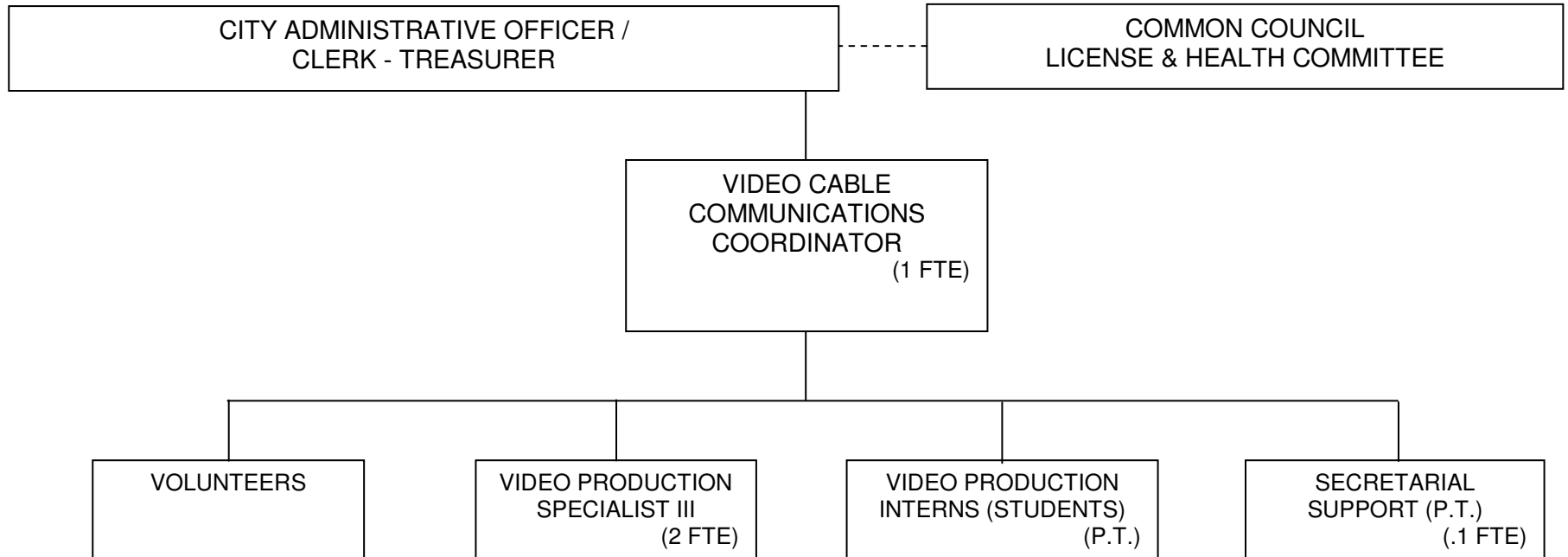
TOTAL POSITIONS: 14 (11.05 City FTE)

**ORGANIZATIONAL CHART
CITY ADMINISTRATIVE OFFICE
(Administration & Finance)**



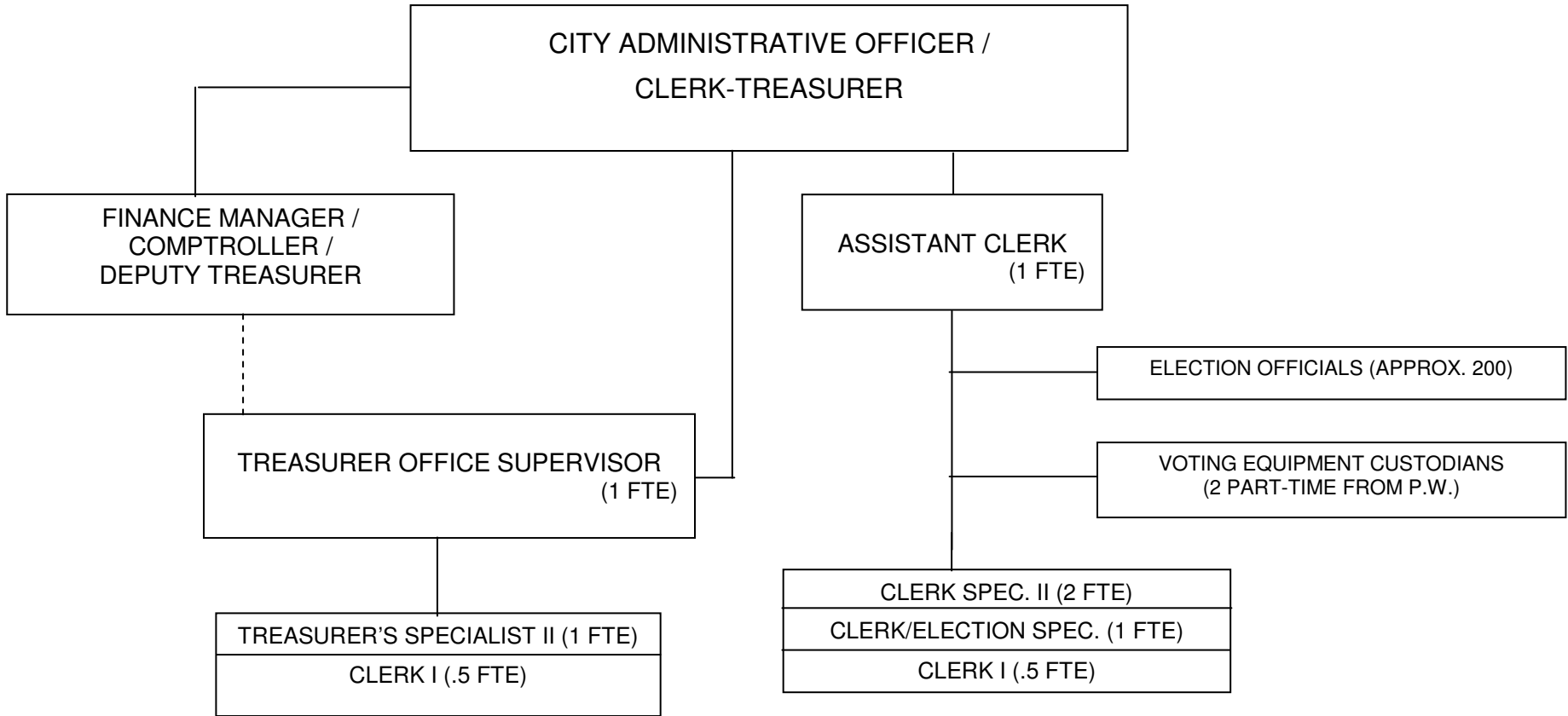
TOTAL POSITIONS: 43 (32.3 City FTE)

**ORGANIZATIONAL CHART
CABLE COMMUNICATIONS**



TOTAL POSITIONS: 4 (3.1 City FTE)

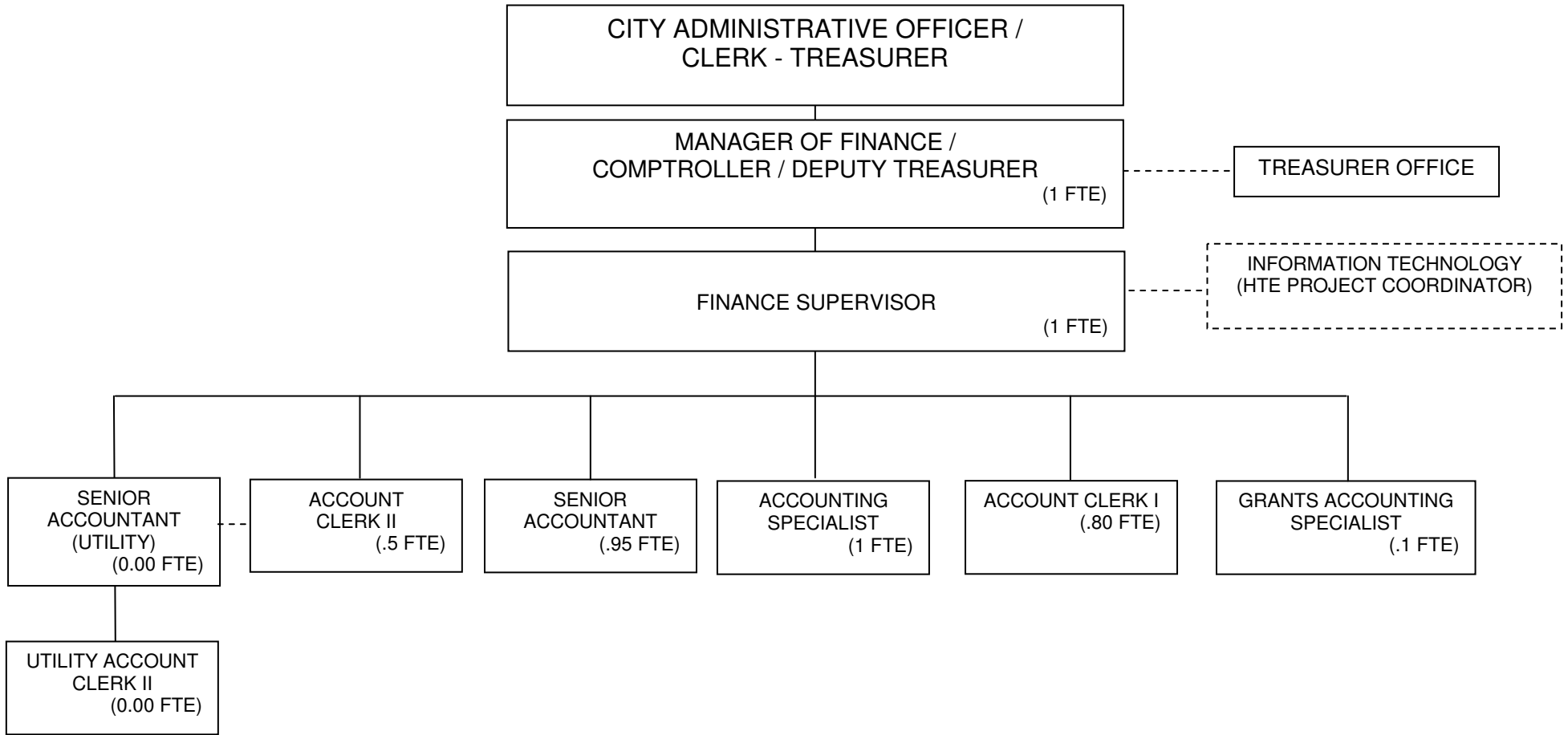
**ORGANIZATIONAL CHART
CLERK / TREASURER**



CLERK SUB-TOTAL POSITIONS: 5
TREASURER SUB-TOTAL POSITIONS: 3
 TOTAL POSITIONS: 8

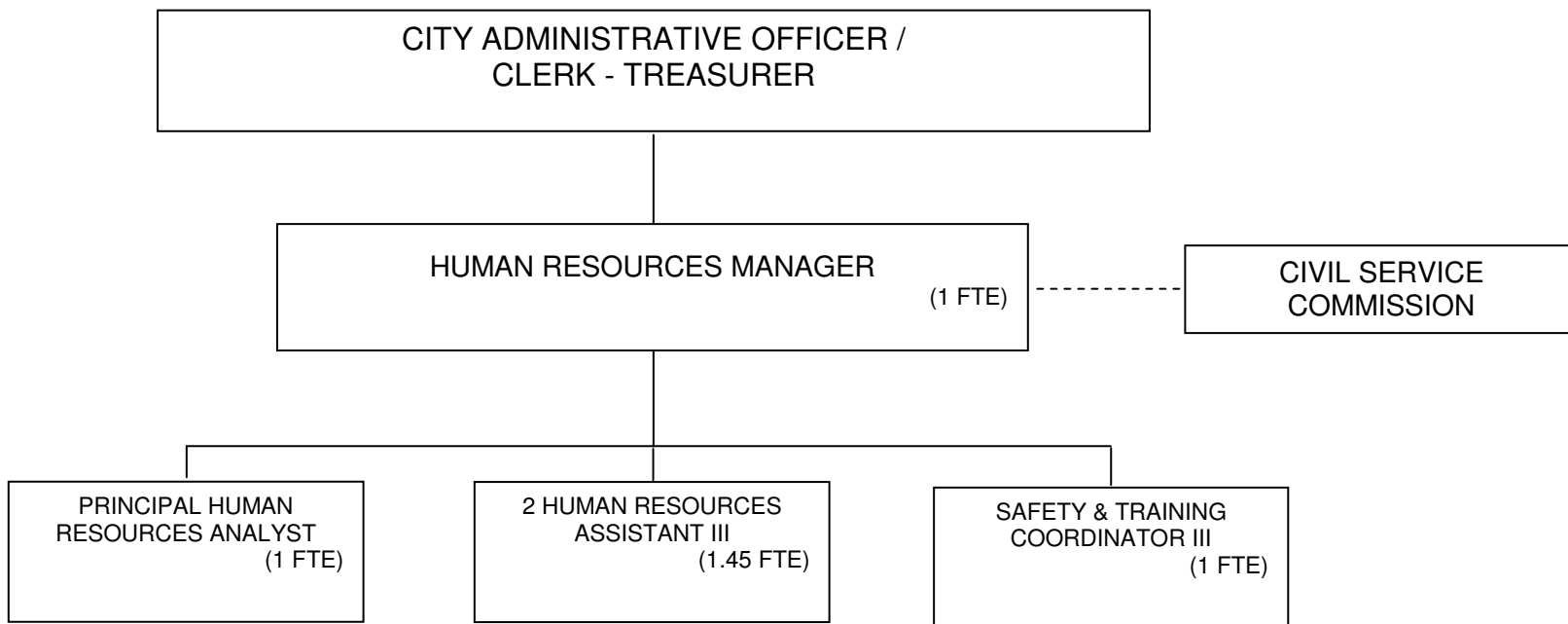
(5.75 City FTE)

ORGANIZATIONAL CHART FINANCE



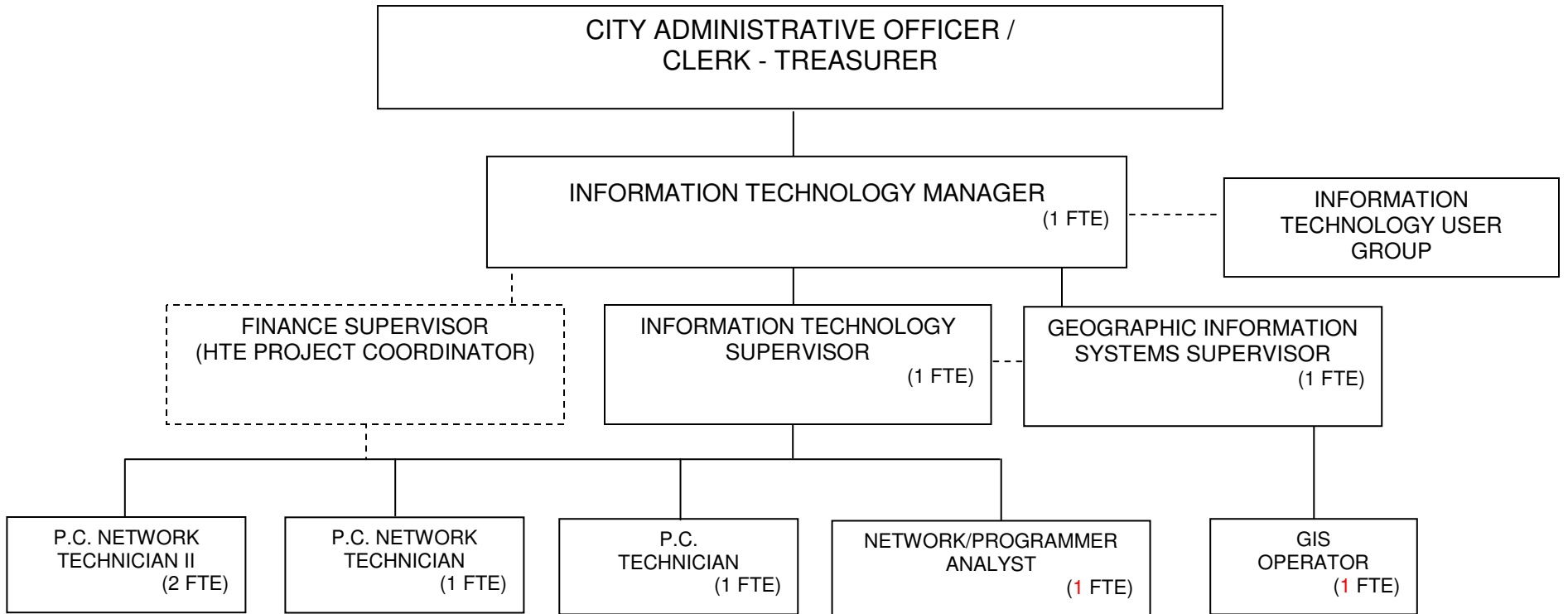
TOTAL POSITIONS: 9 (5.35 City FTE)

**ORGANIZATIONAL CHART
HUMAN RESOURCES**



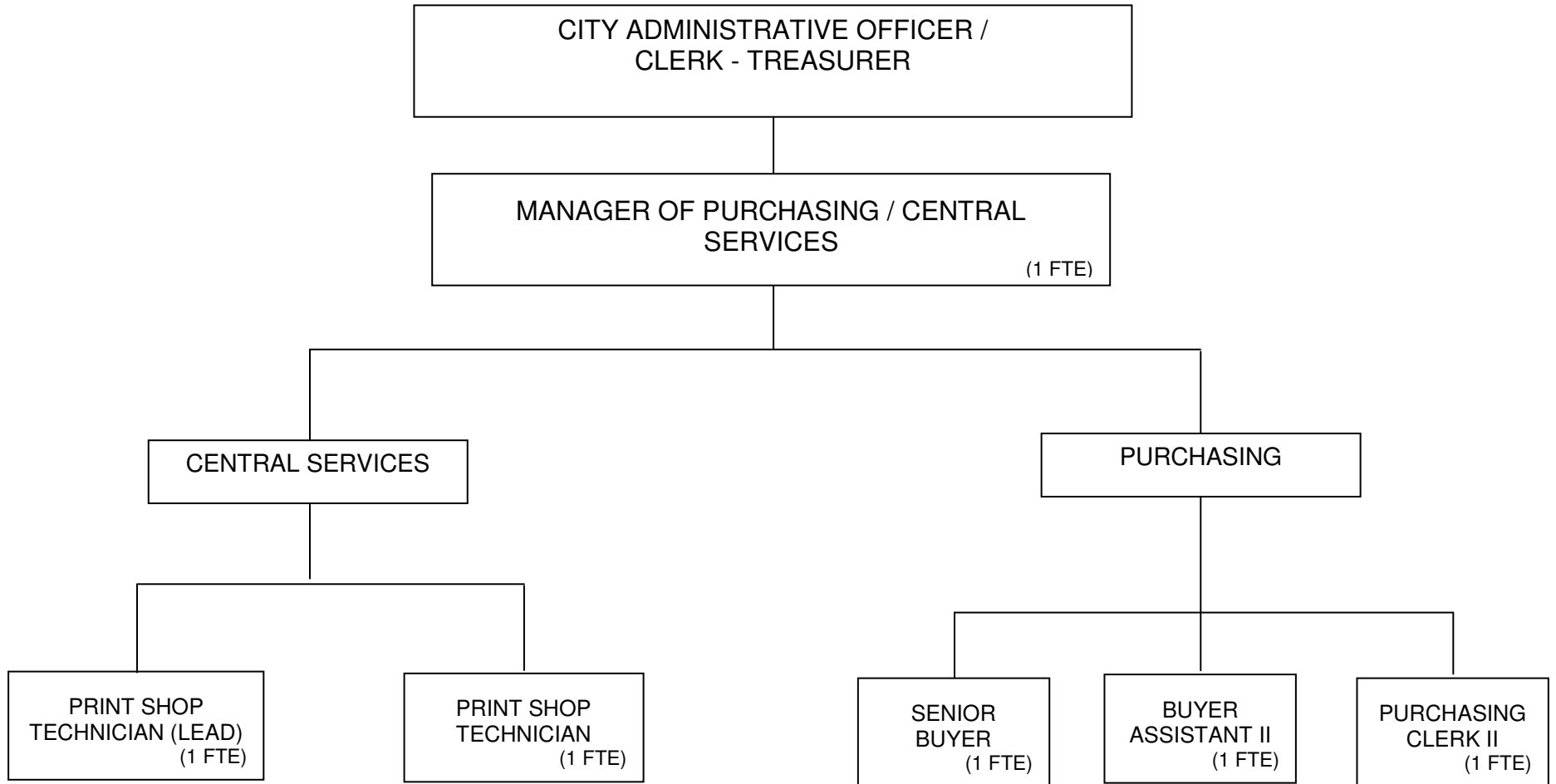
TOTAL POSITIONS: 5 (4.45 City FTE)

ORGANIZATIONAL CHART INFORMATION TECHNOLOGY



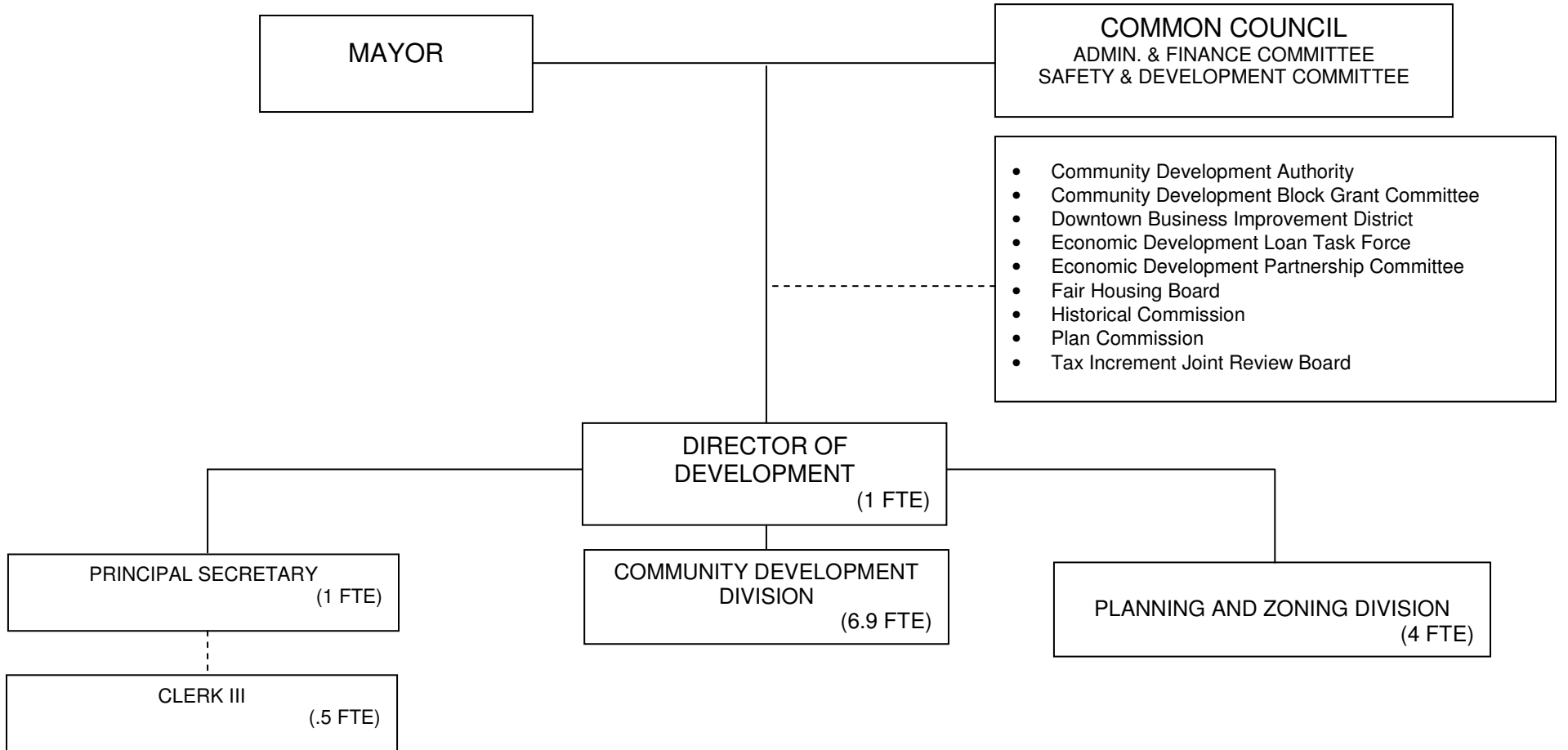
TOTAL POSITIONS: 9 (9 City FTE)

**ORGANIZATIONAL CHART
PURCHASING / CENTRAL SERVICES**



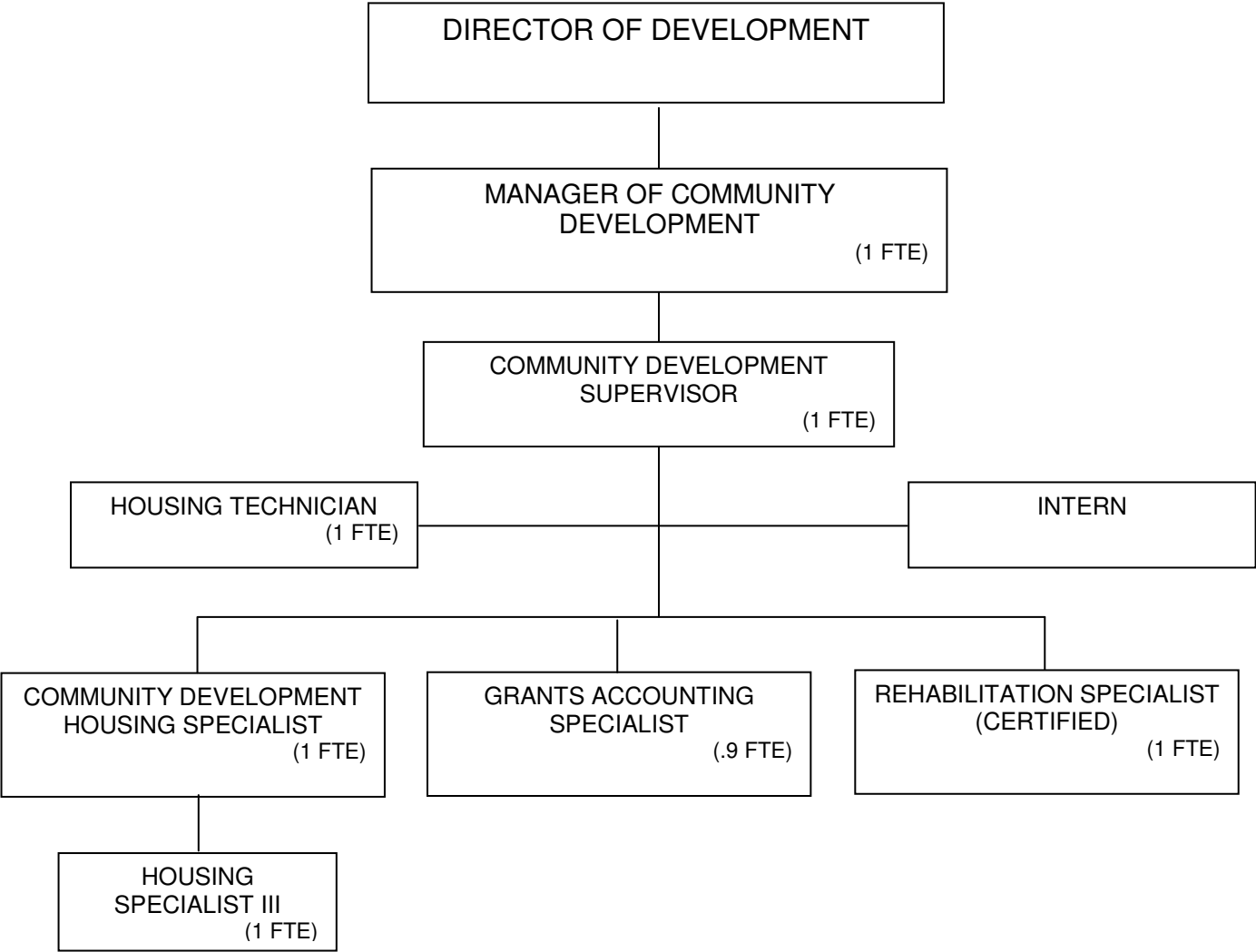
TOTAL POSITIONS: 6 (6 FTE)

ORGANIZATIONAL CHART DEVELOPMENT



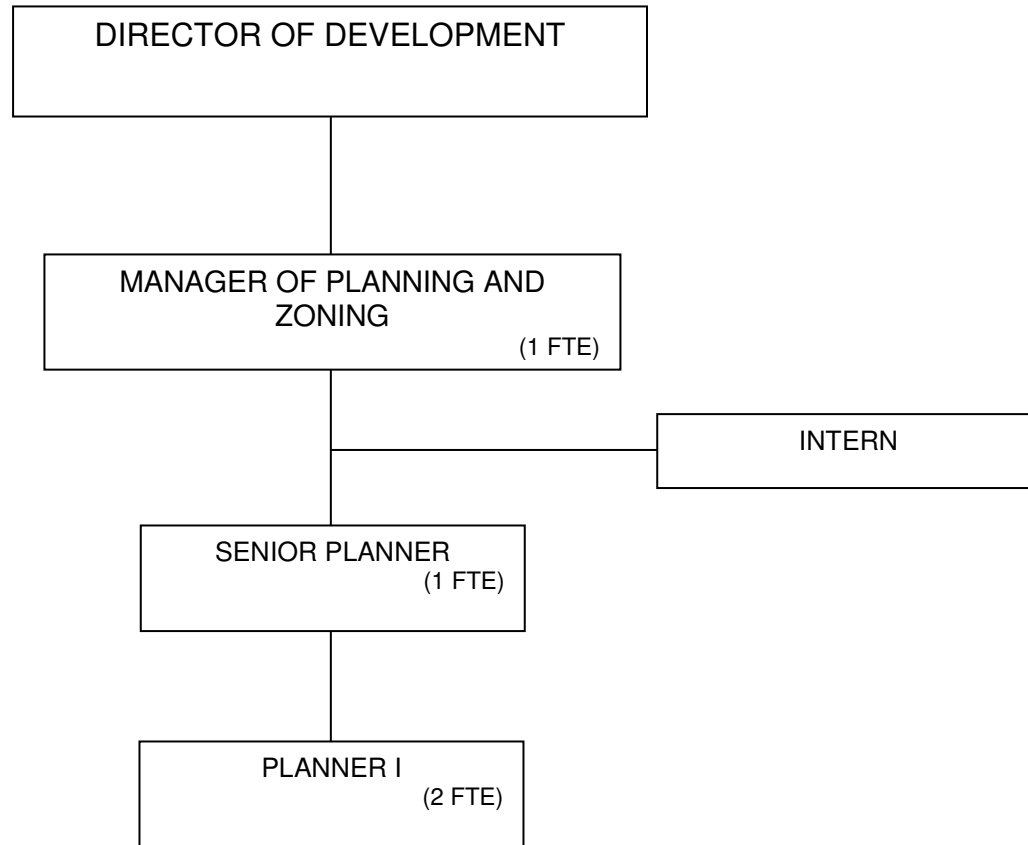
TOTAL POSITIONS: 14 (2.33 City FTE)

**ORGANIZATIONAL CHART
COMMUNITY DEVELOPMENT**



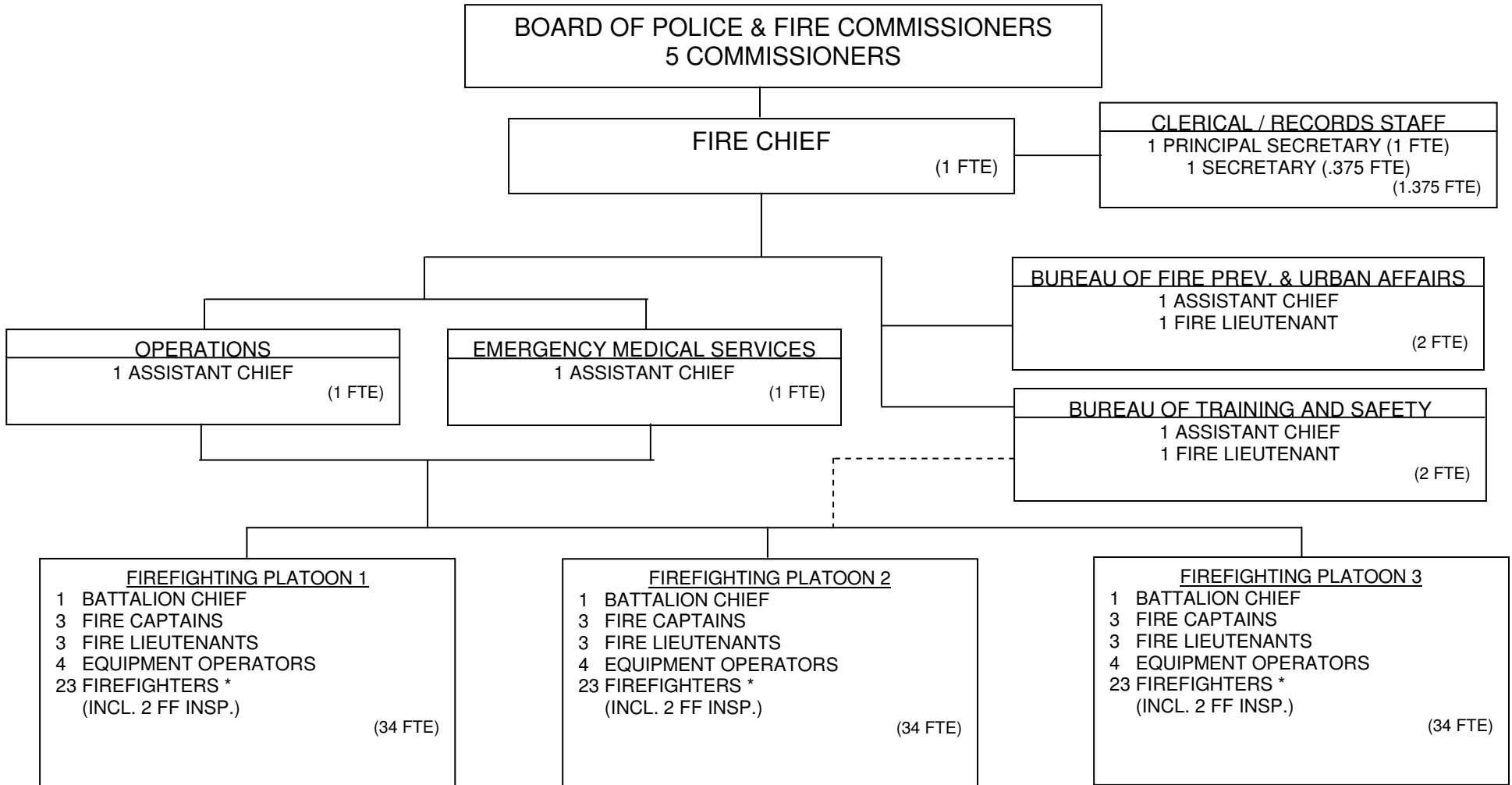
TOTAL POSITIONS: 7 (0 City FTE)

**ORGANIZATIONAL CHART
PLANNING AND ZONING**



TOTAL POSITIONS: 4 (2.33 City FTE)

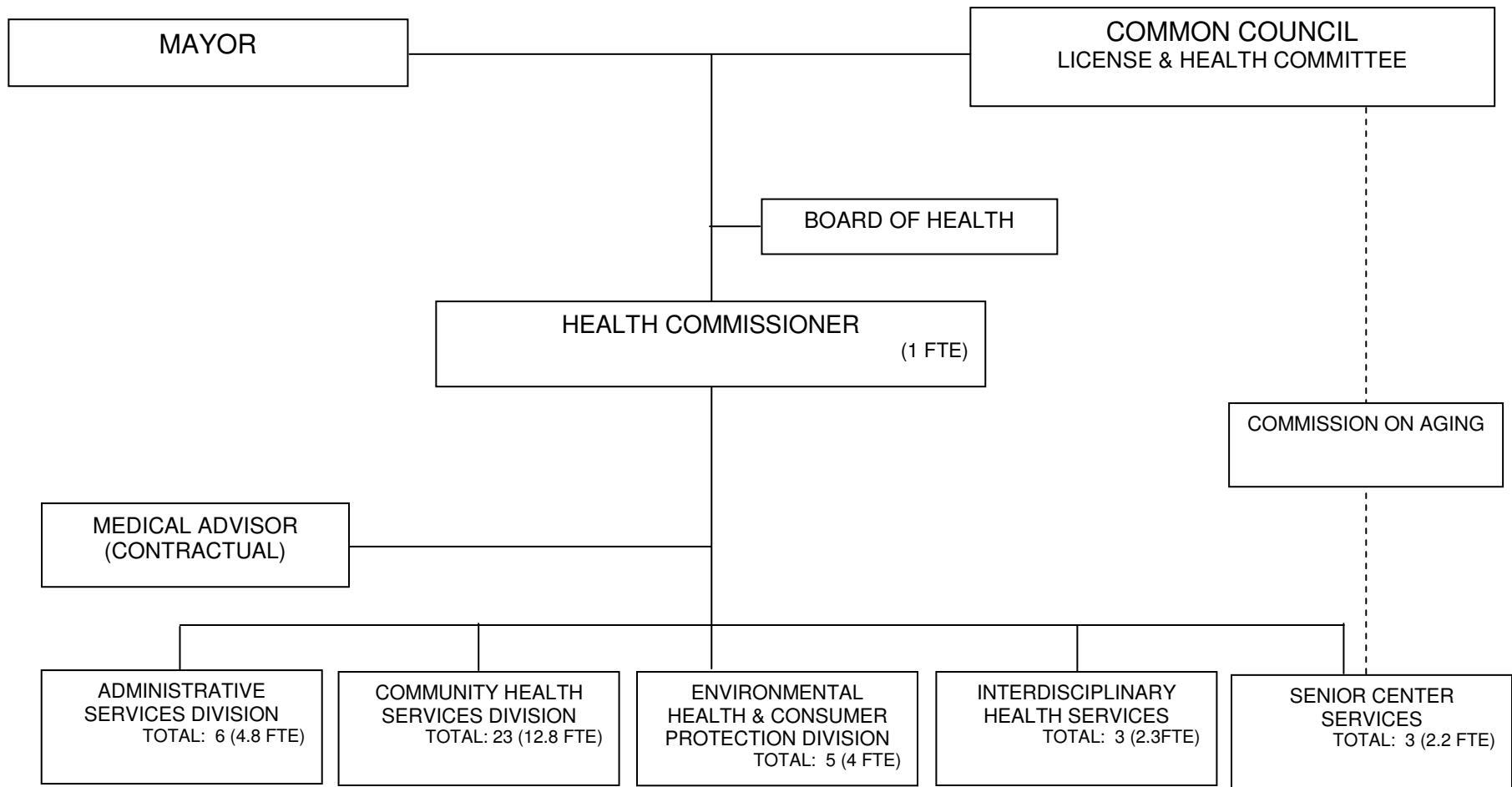
ORGANIZATIONAL CHART FIRE



* Org Chart includes three (3) Firefighter FTE's (one for each platoon – 22 vs 23), which were reduced during 2012. The budget shows a total of 107.375 City FTE.

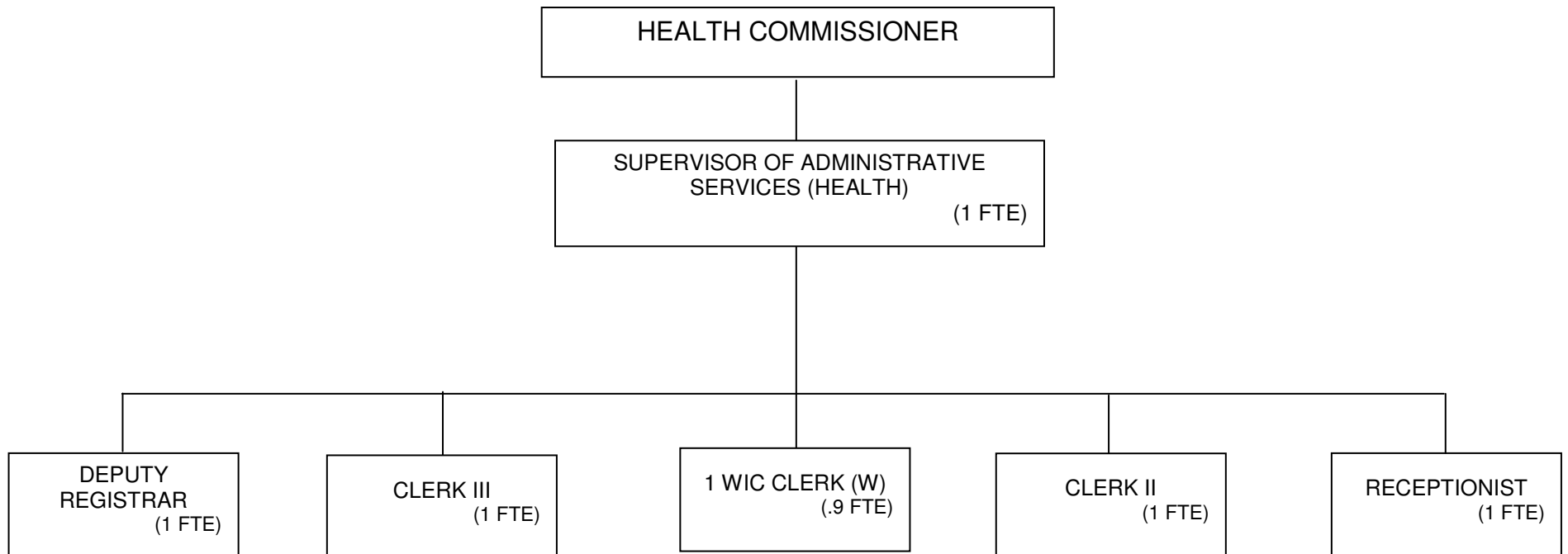
TOTAL POSITIONS*: 111 (107.375 City FTE)

ORGANIZATIONAL CHART HEALTH



TOTAL POSITIONS: 41 (27.1 City FTE)

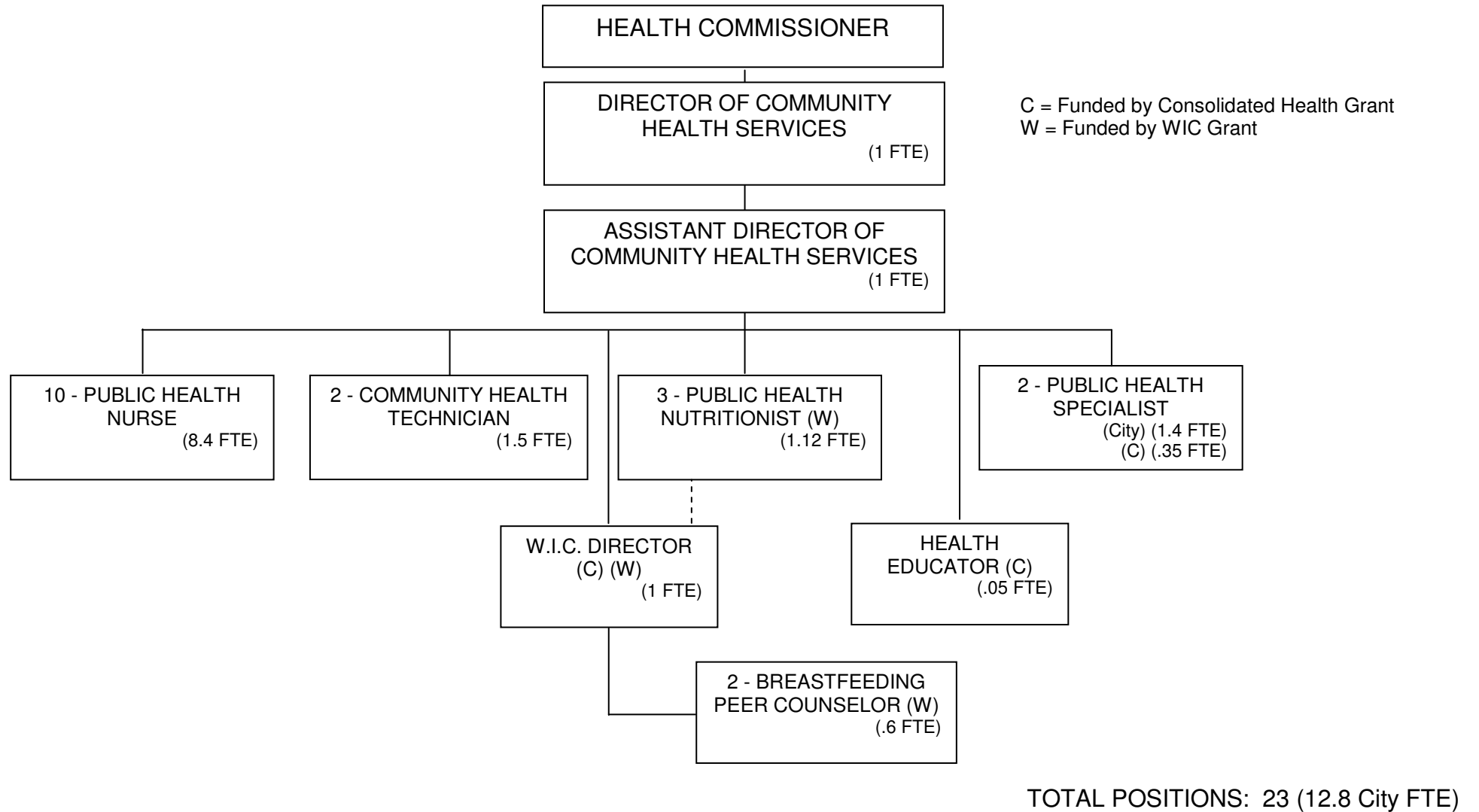
**ORGANIZATIONAL CHART
HEALTH
HEALTH ADMINISTRATIVE SERVICES**



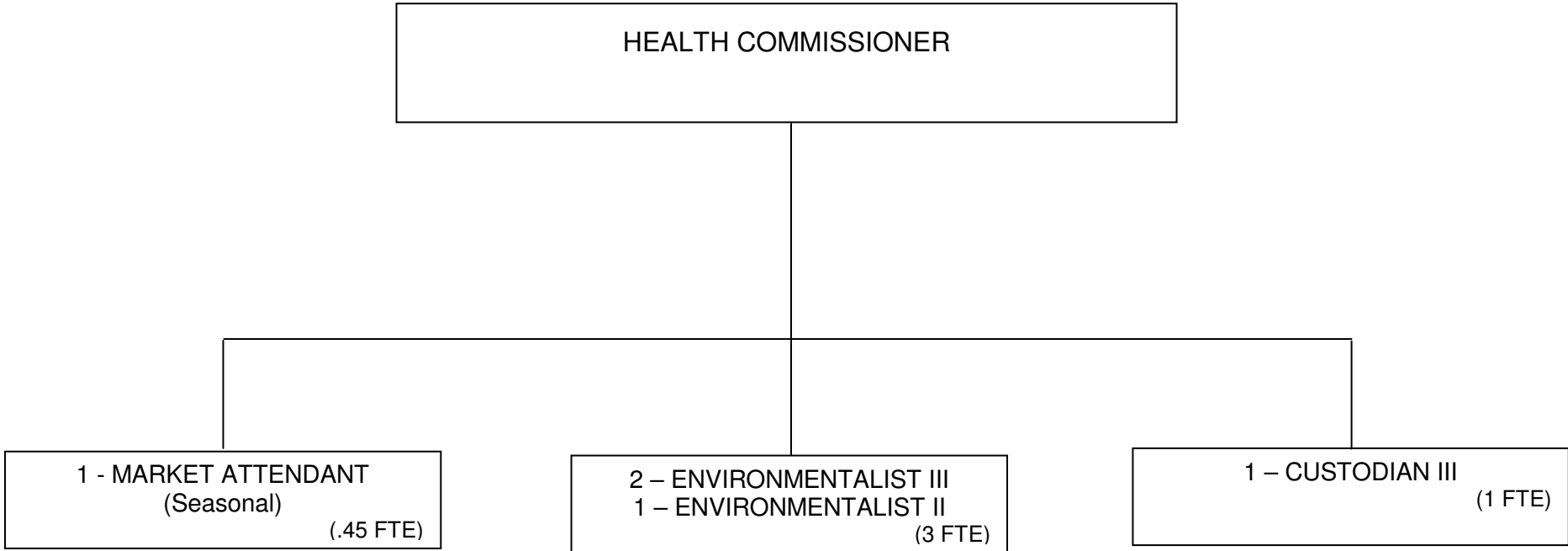
(W) Funded by WIC Grant

TOTAL POSITIONS: 6 (4.8 City FTE)

**ORGANIZATIONAL CHART
HEALTH
COMMUNITY HEALTH SERVICES**

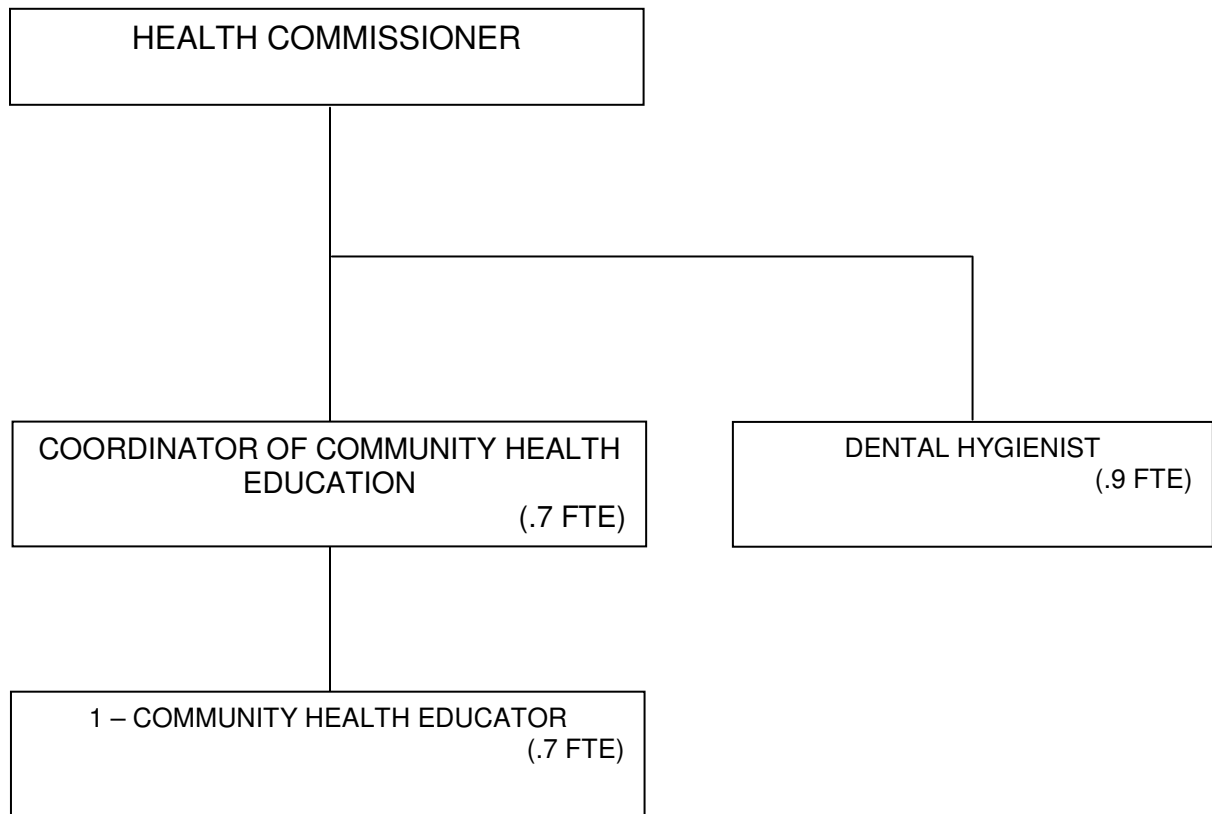


**ORGANIZATIONAL CHART
HEALTH
ENVIRONMENTAL HEALTH & CONSUMER PROTECTION**



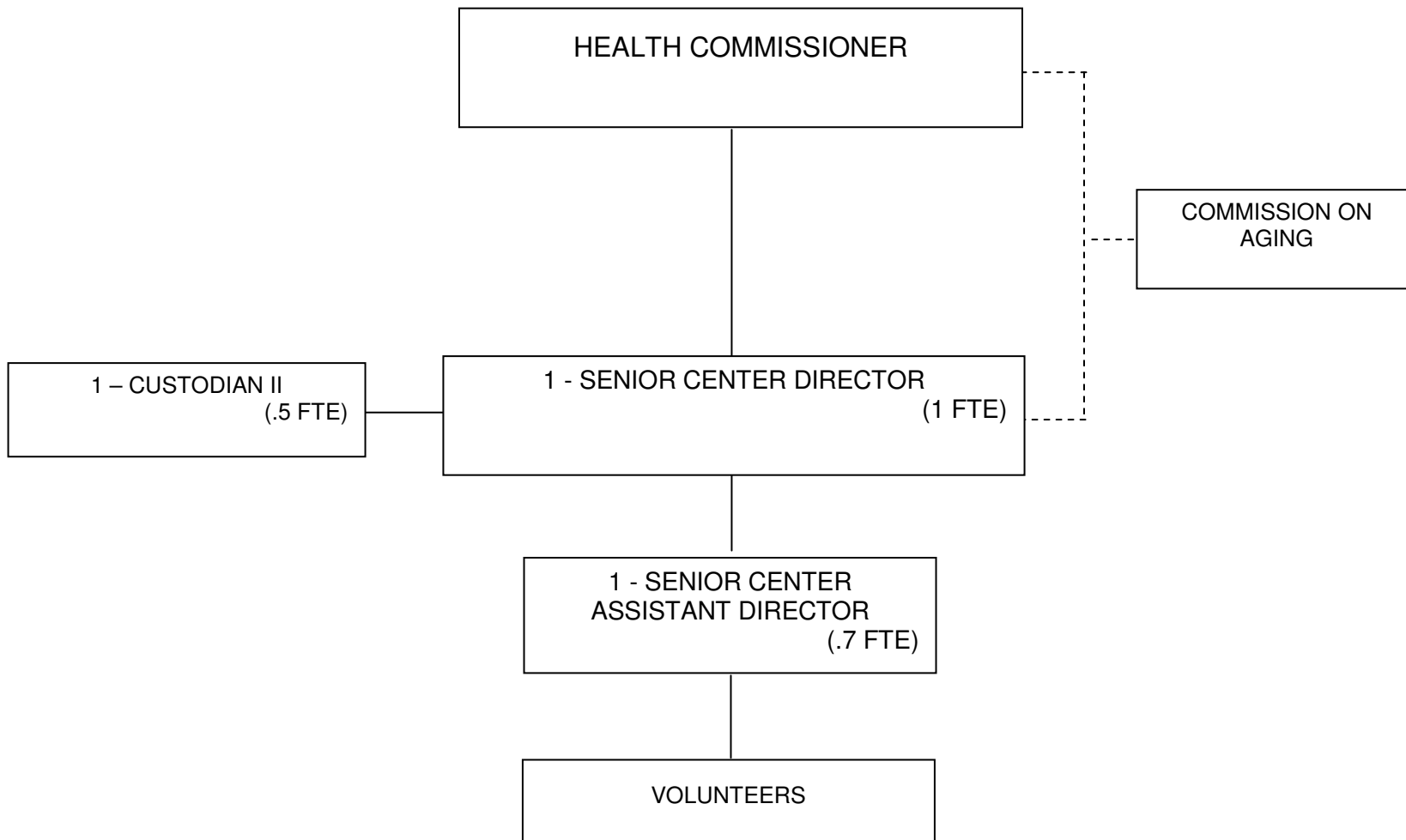
TOTAL POSITIONS: 5 (4 City FTE)

**ORGANIZATIONAL CHART
HEALTH
INTERDISCIPLINARY HEALTH SERVICES**



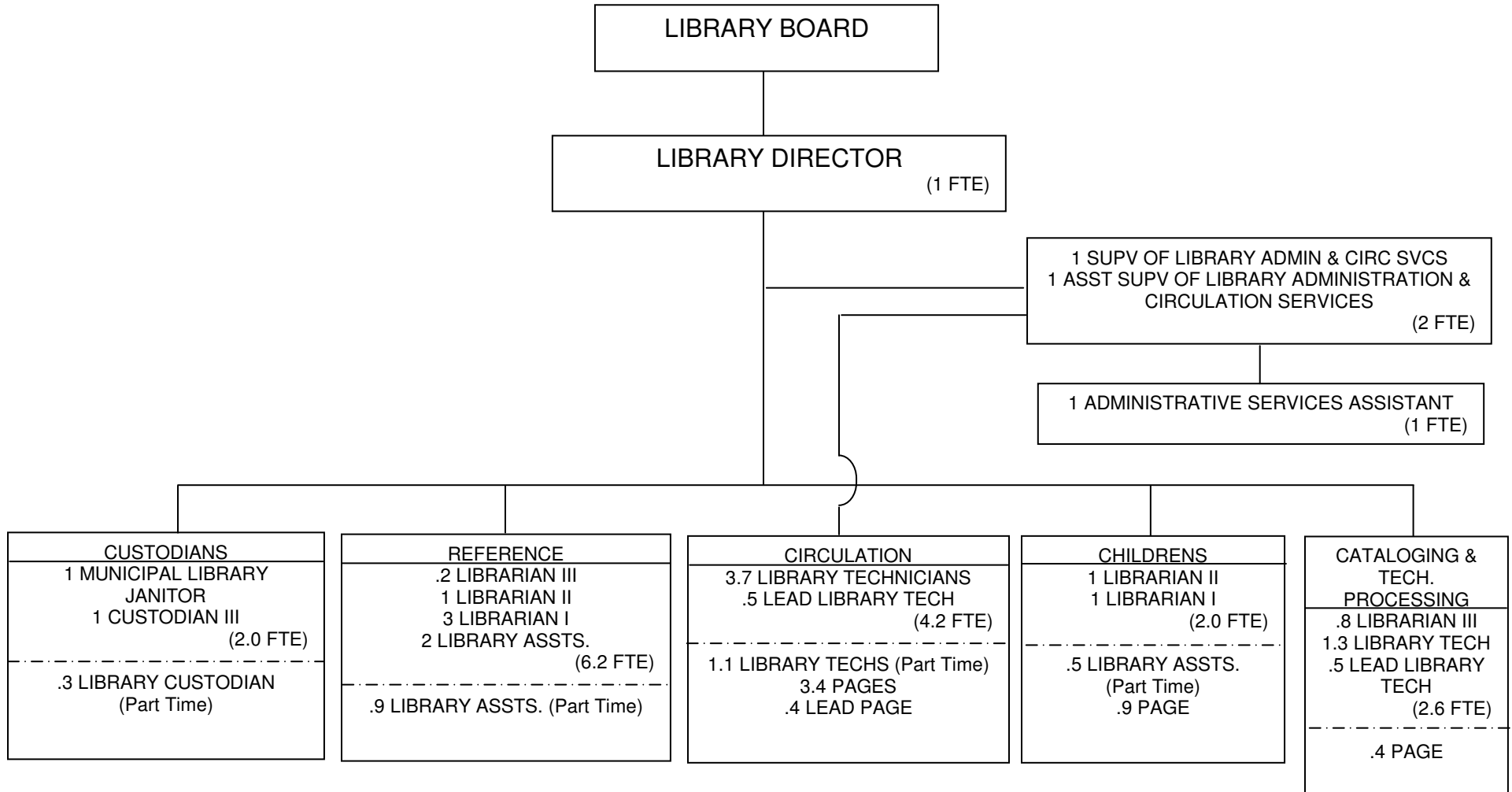
TOTAL POSITIONS: 3 (2.3 City FTE)

**ORGANIZATIONAL CHART
SENIOR CENTER**



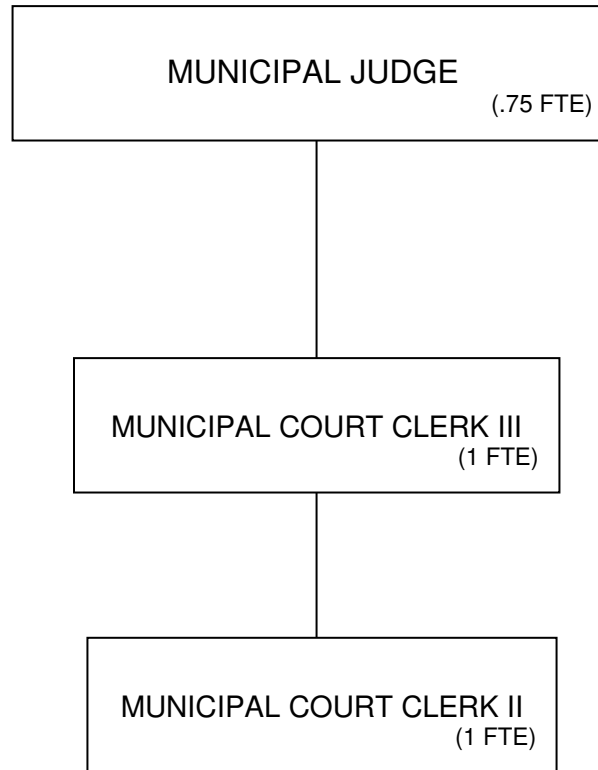
TOTAL POSITIONS: 3 (2.2 City FTE)

ORGANIZATIONAL CHART LIBRARY



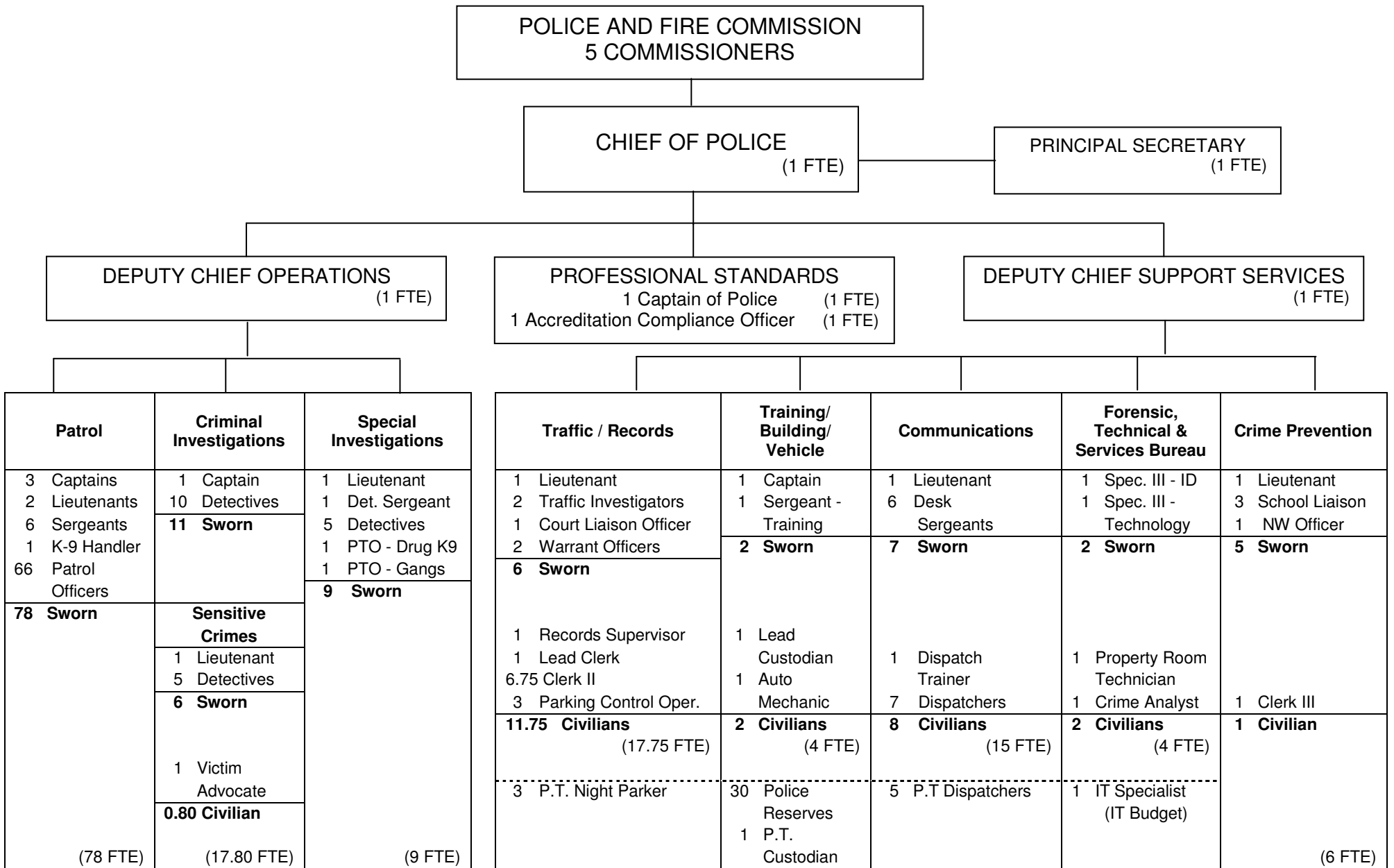
TOTAL POSITIONS*: 51
 *21.0 City FTE
 30 PT (7.9 FTE)

**ORGANIZATIONAL CHART
MUNICIPAL COURT**



TOTAL POSITIONS: 3 (2.75 FTE)

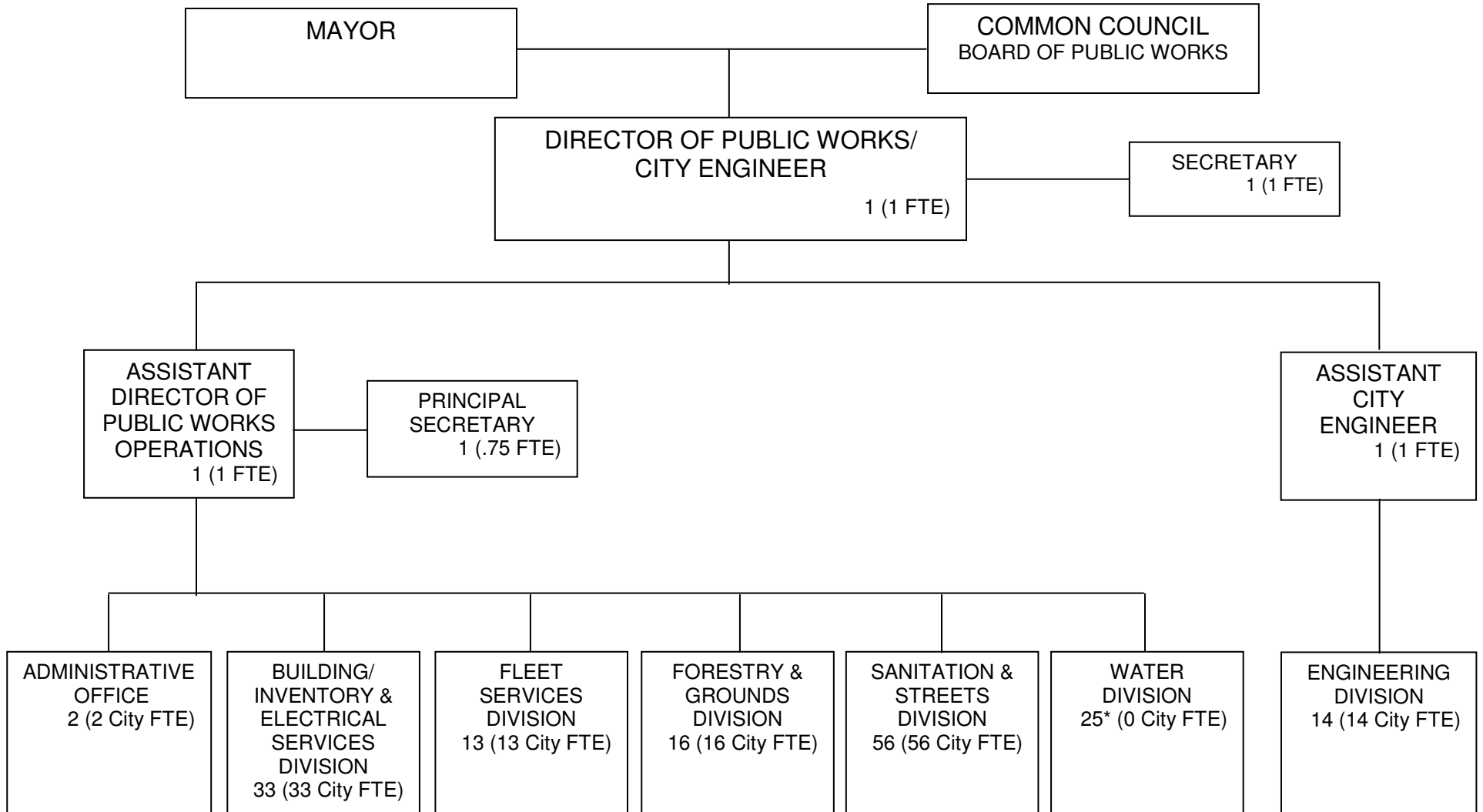
ORGANIZATIONAL CHART POLICE



Org Chart does not reflect the 11 part time and temporary positions (Community Aides, Night Parker Takers, Part-time Cleaner, and Clerks) as needed.

132	Sworn Employees
26.55	Civilians
158.55	Total Employees

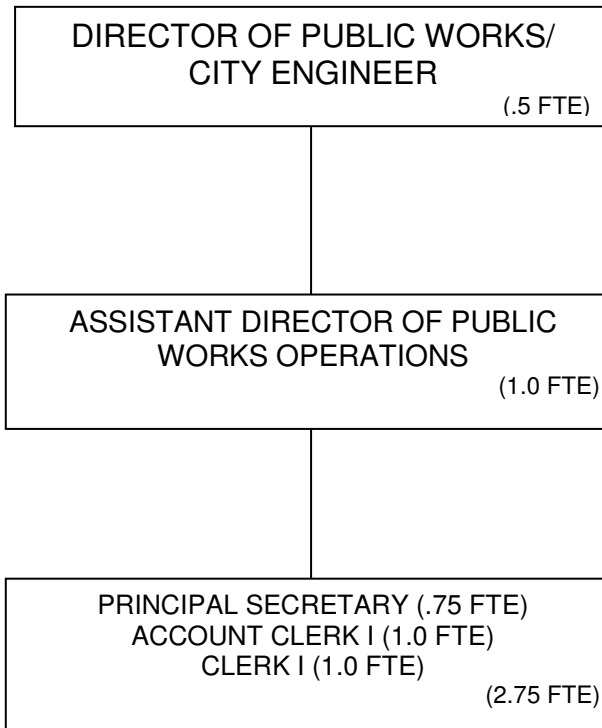
**ORGANIZATIONAL CHART
PUBLIC WORKS / ENGINEERING**



*2.55 POSITIONS UNDER THE DIRECTION OF THE FINANCE DIVISION

TOTAL POSITIONS: 164 (138.75 City FTE)

**ORGANIZATIONAL CHART
PUBLIC WORKS / ENGINEERING
ADMINISTRATIVE OFFICE**

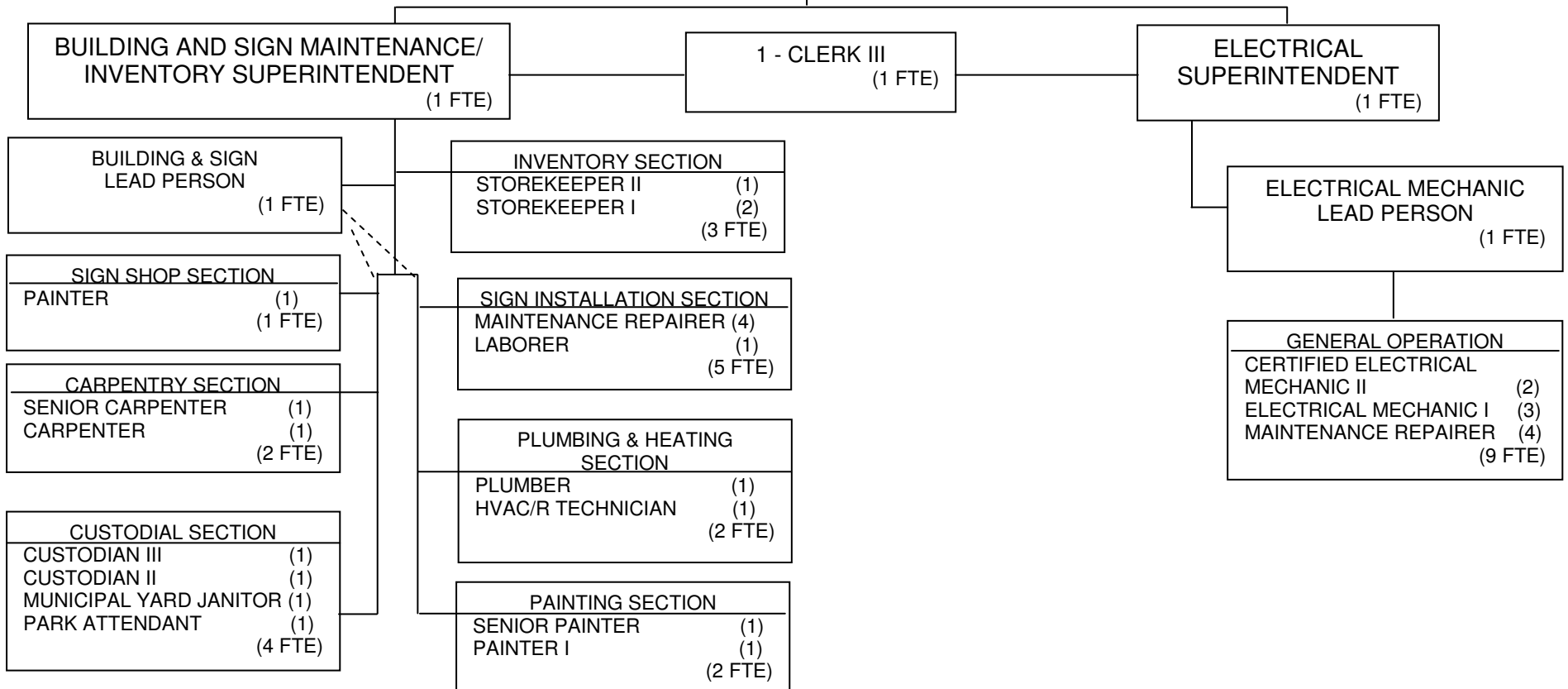


TOTAL POSITIONS: 5 (4.25 City FTE)

**ORGANIZATIONAL CHART
PUBLIC WORKS / ENGINEERING
BUILDING / INVENTORY AND ELECTRICAL SERVICES**

DIRECTOR OF PUBLIC WORKS/
CITY ENGINEER

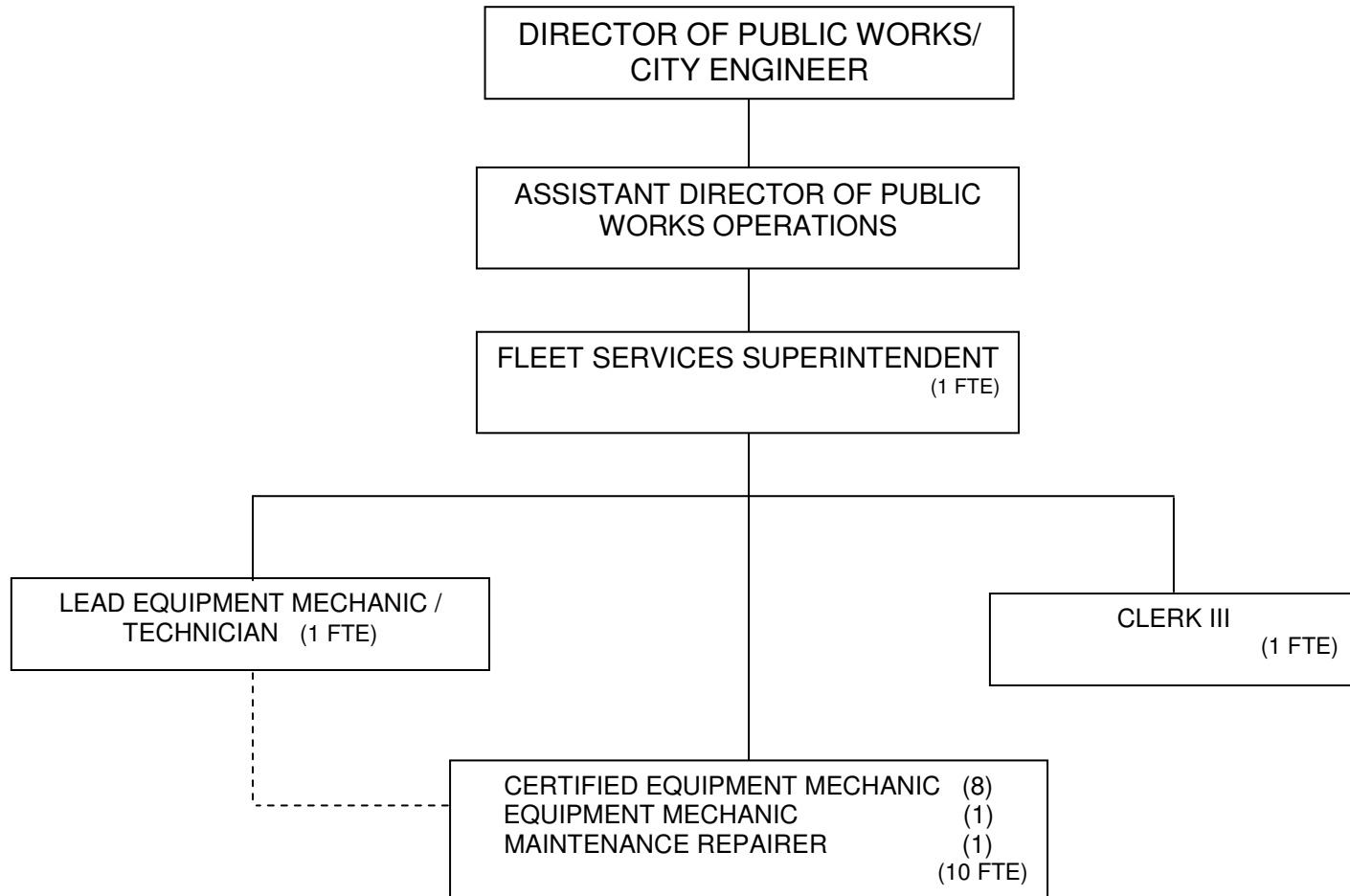
ASSISTANT DIRECTOR OF PUBLIC
WORKS OPERATIONS



Org Chart does not reflect the three (3) temporary laborer positions.

TOTAL POSITIONS: 33 (33 City FTE)

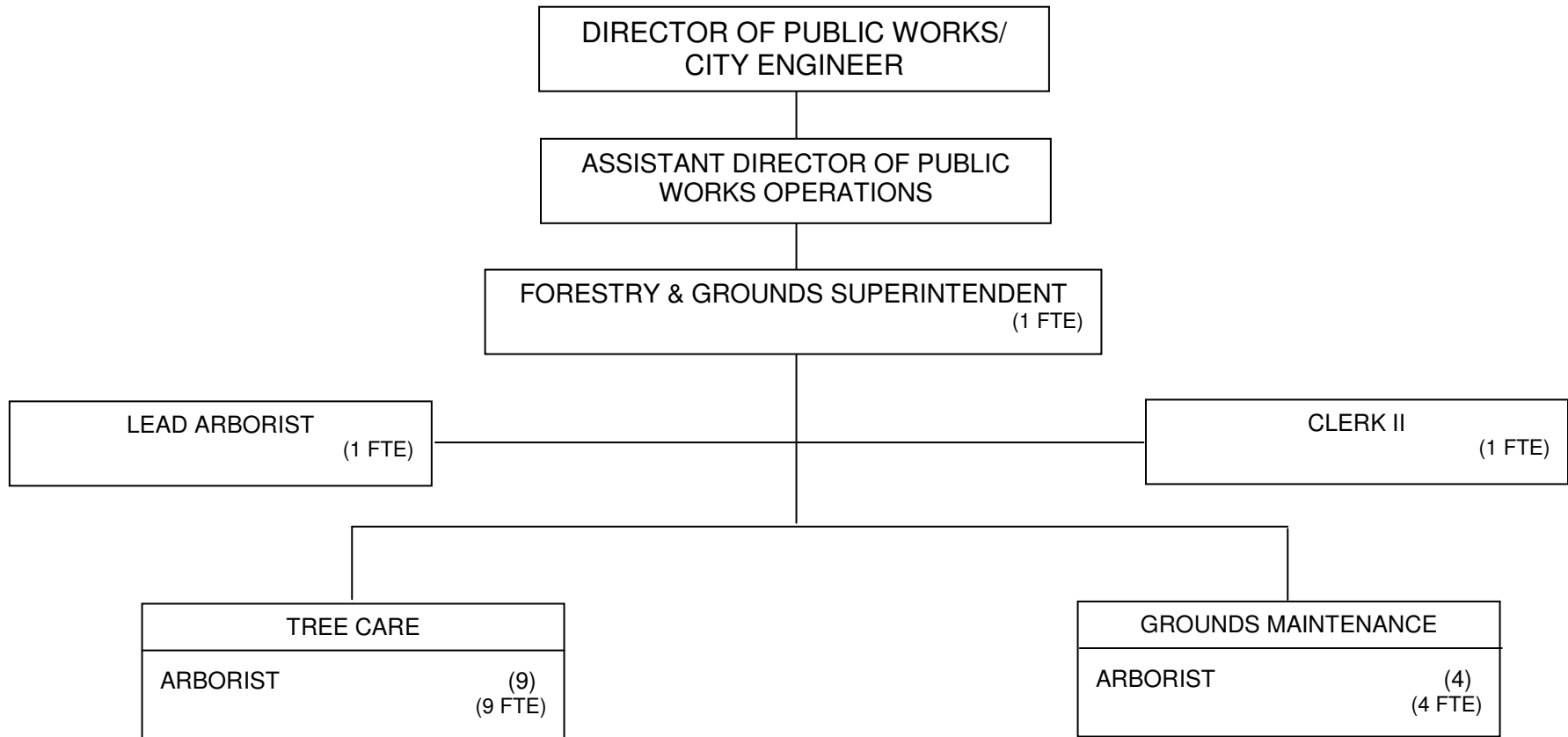
**ORGANIZATIONAL CHART
PUBLIC WORKS / ENGINEERING
FLEET SERVICES**



Org Chart does not reflect the one (1) temporary laborer position.

TOTAL POSITIONS: 13 (13 City FTE)

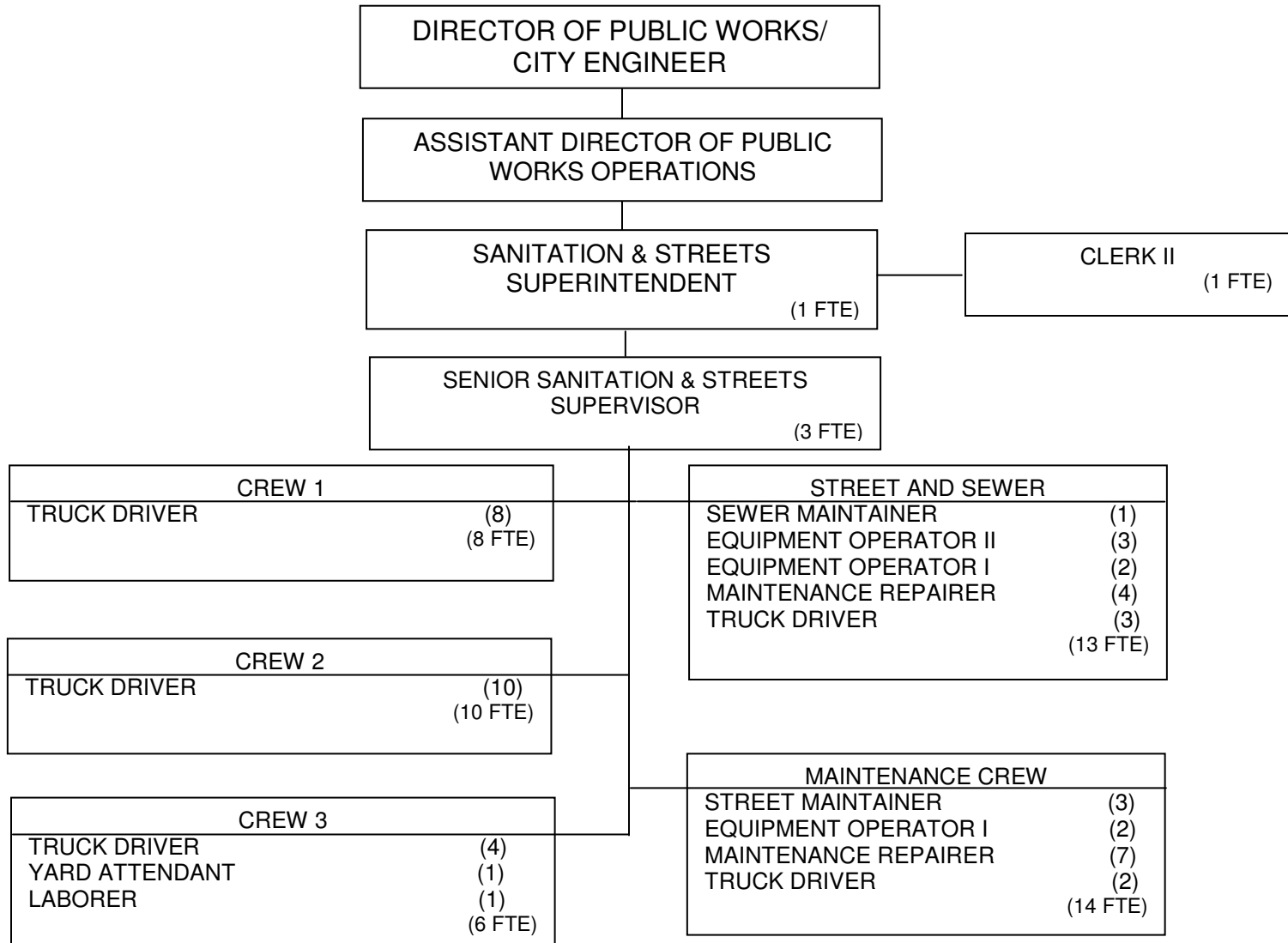
**ORGANIZATIONAL CHART
PUBLIC WORKS / ENGINEERING
FORESTRY & GROUNDS**



Org Chart does not reflect the ten (10) temporary laborer positions.

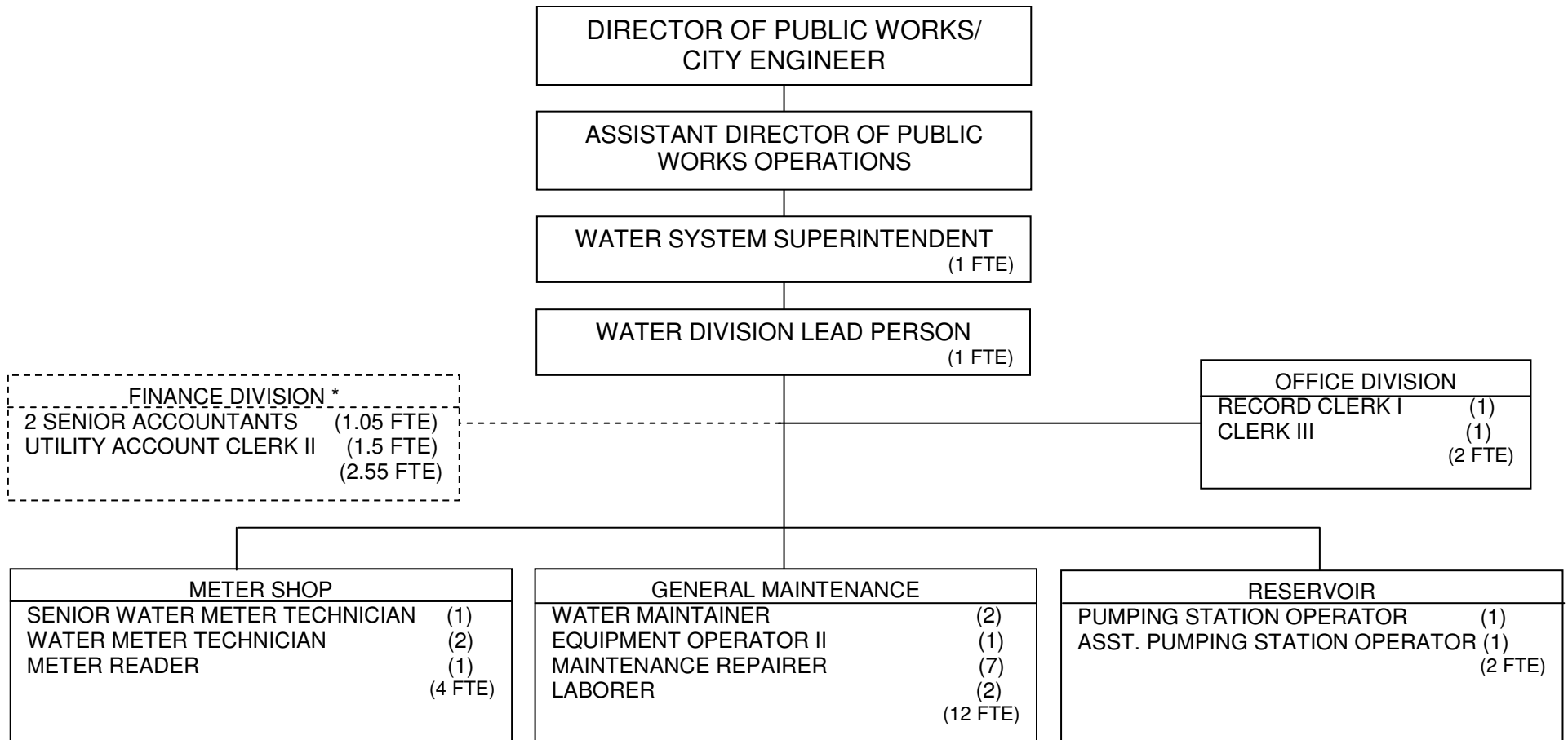
TOTAL POSITIONS: 16 (16 City FTE)

**ORGANIZATIONAL CHART
PUBLIC WORKS / ENGINEERING
SANITATION & STREETS**



Org Chart does not reflect the seven (7) temporary laborer positions.

**ORGANIZATIONAL CHART
PUBLIC WORKS / ENGINEERING
WATER**

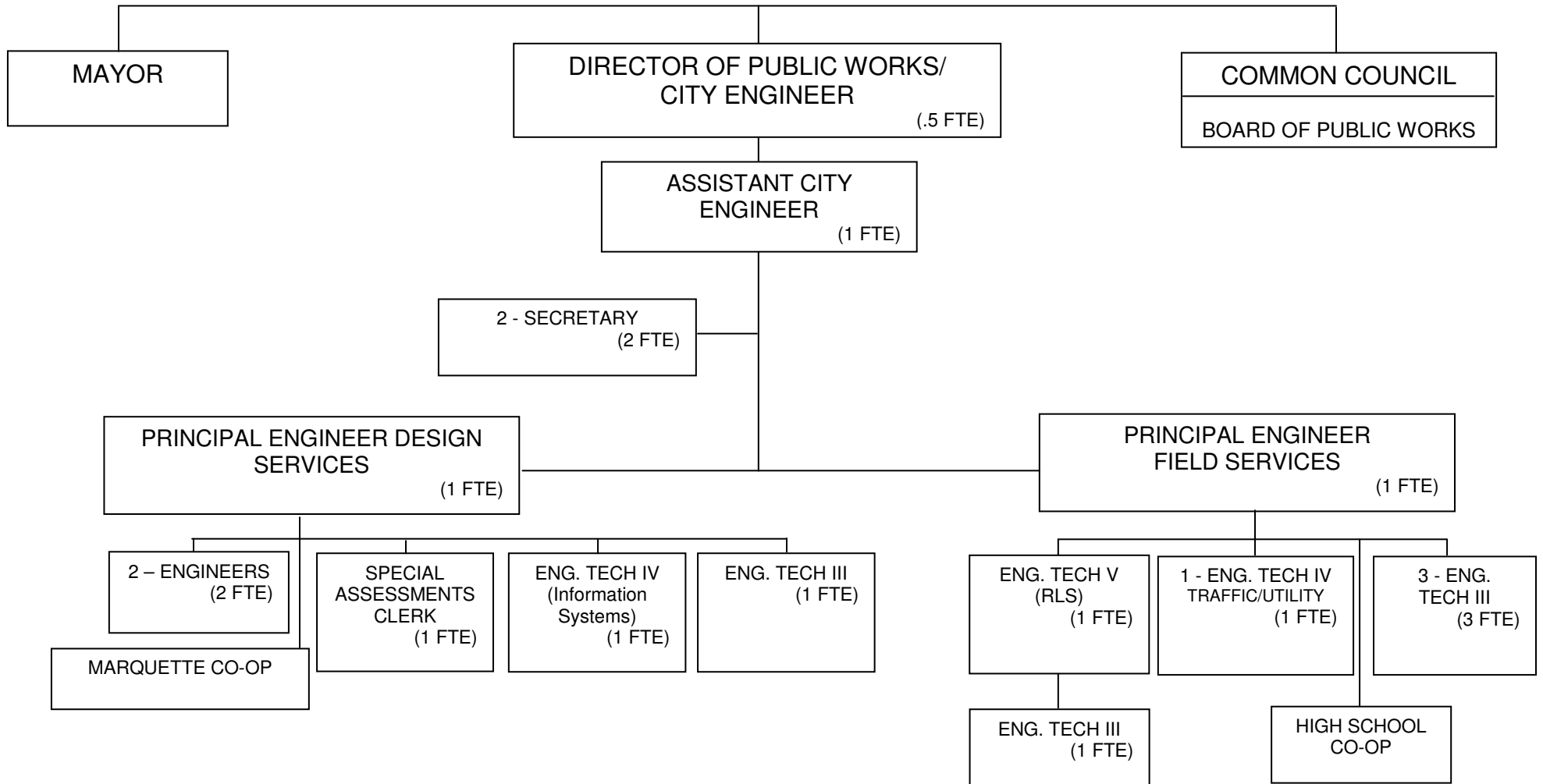


*THESE POSITIONS ARE IN THE PUBLIC WORKS WATER DIVISION BUDGET BUT ARE UNDER THE DIRECTION OF THE FINANCE DIVISION.

NOTE: Other personnel working in support of the Water Utility (A&F, Treasurer, PW, IT) are also funded by the Water Utility, but are not included on this chart. Further, some of the positions reflected above on this chart also perform work funded by other Utility Budgets (Sanitary, Storm, etc.)

TOTAL POSITIONS: 25 (0 City FTE)

**ORGANIZATIONAL CHART
PUBLIC WORKS/ENGINEERING
ENGINEERING**



TOTAL POSITIONS: 17 (16.5 City FTE)