

City of West Allis



Organizational Chart

2011

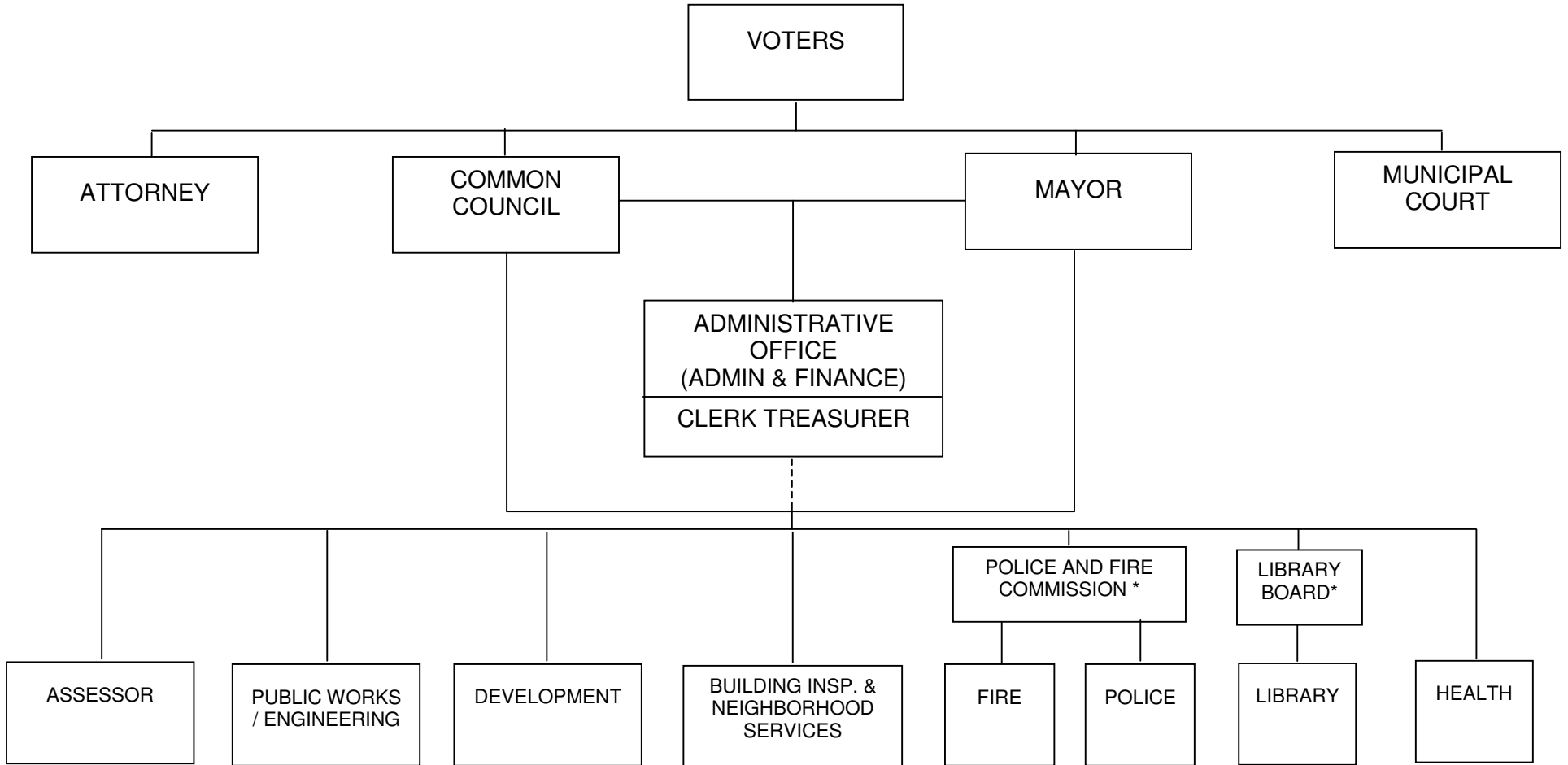
ORGANIZATIONAL CHARTS

January 1, 2011

	<u>Page</u>
City of West Allis.....	1
Council Policy Committees.....	2
Advisory Committees.....	3
Mayor	4
Assessor.....	5
Attorney	6
Building Inspections & Neighborhood Services	7
City Administrative Office/ (Administration & Finance)	8
Cable Communications	9
Clerk/Treasurer.....	10
Finance.....	11
Human Resources	12
Information Technology	13
Purchasing/Central Services	14
Development	15
Community Development	16
Planning and Zoning.....	17
Fire	18
Health.....	19
Health Administrative Services	20
Community Health Services	21
Environmental Health & Consumer Protection	22
Interdisciplinary Health Services.....	23
Senior Center	24
Library	25

	<u>Page</u>
Municipal Court.....	26
Police.....	27
Public Works / Engineering.....	28
Administrative Office.....	29
Building / Inventory and Electrical Services.....	30
Fleet Services.....	31
Forestry & Grounds	32
Sanitation & Streets.....	33
Water	34
Engineering	35

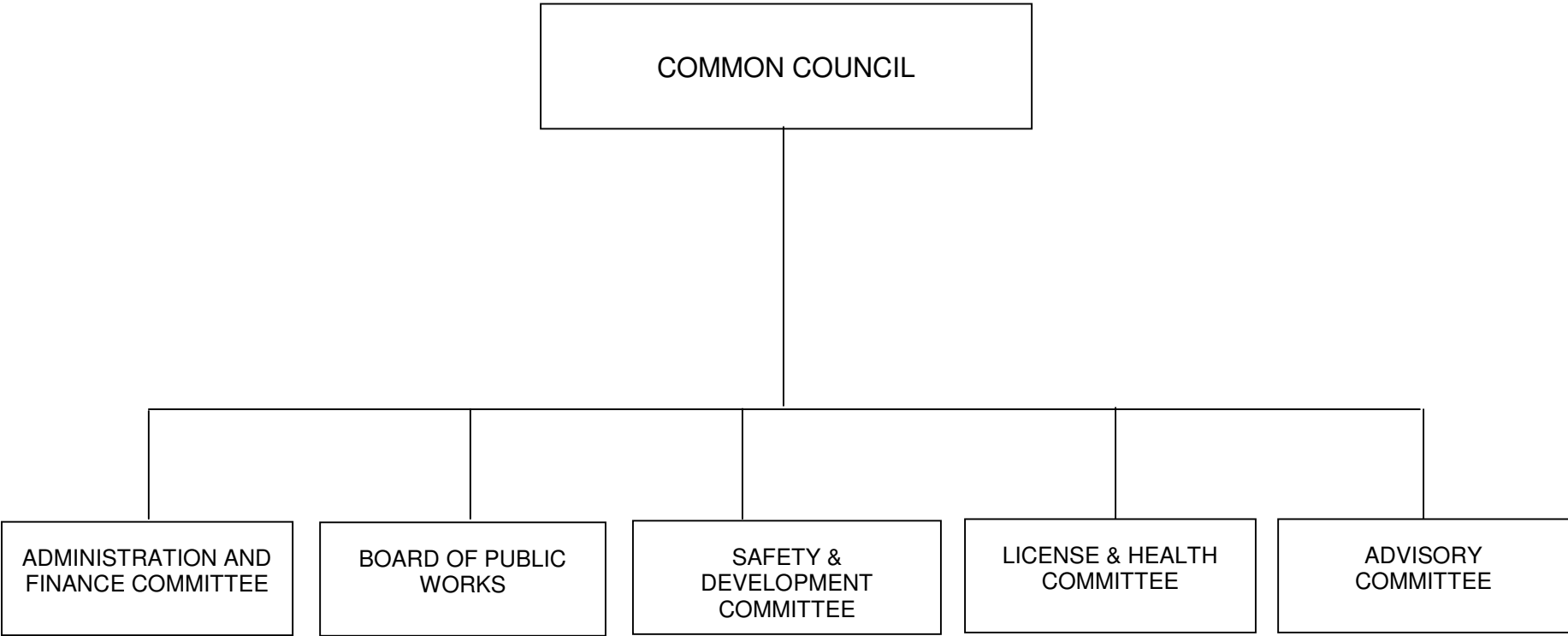
**ORGANIZATIONAL CHART
CITY OF WEST ALLIS**



*Appointed by the Mayor and confirmed by the Common Council, with policy responsibility.

Note: Solid lines indicate direct lines of authority.
Dashed lines indicate indirect lines of administration.

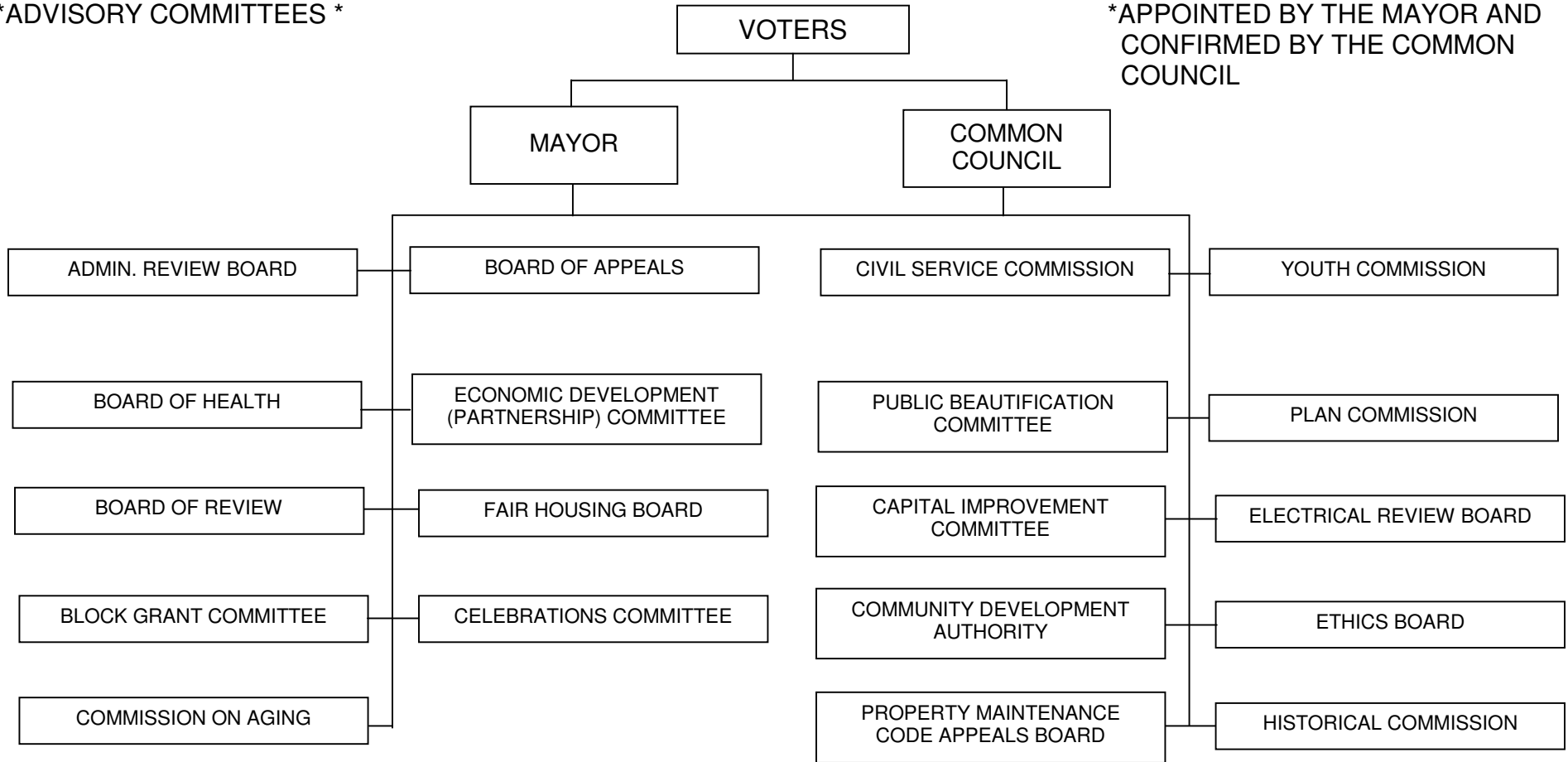
**ORGANIZATIONAL CHART
COUNCIL POLICY COMMITTEES**



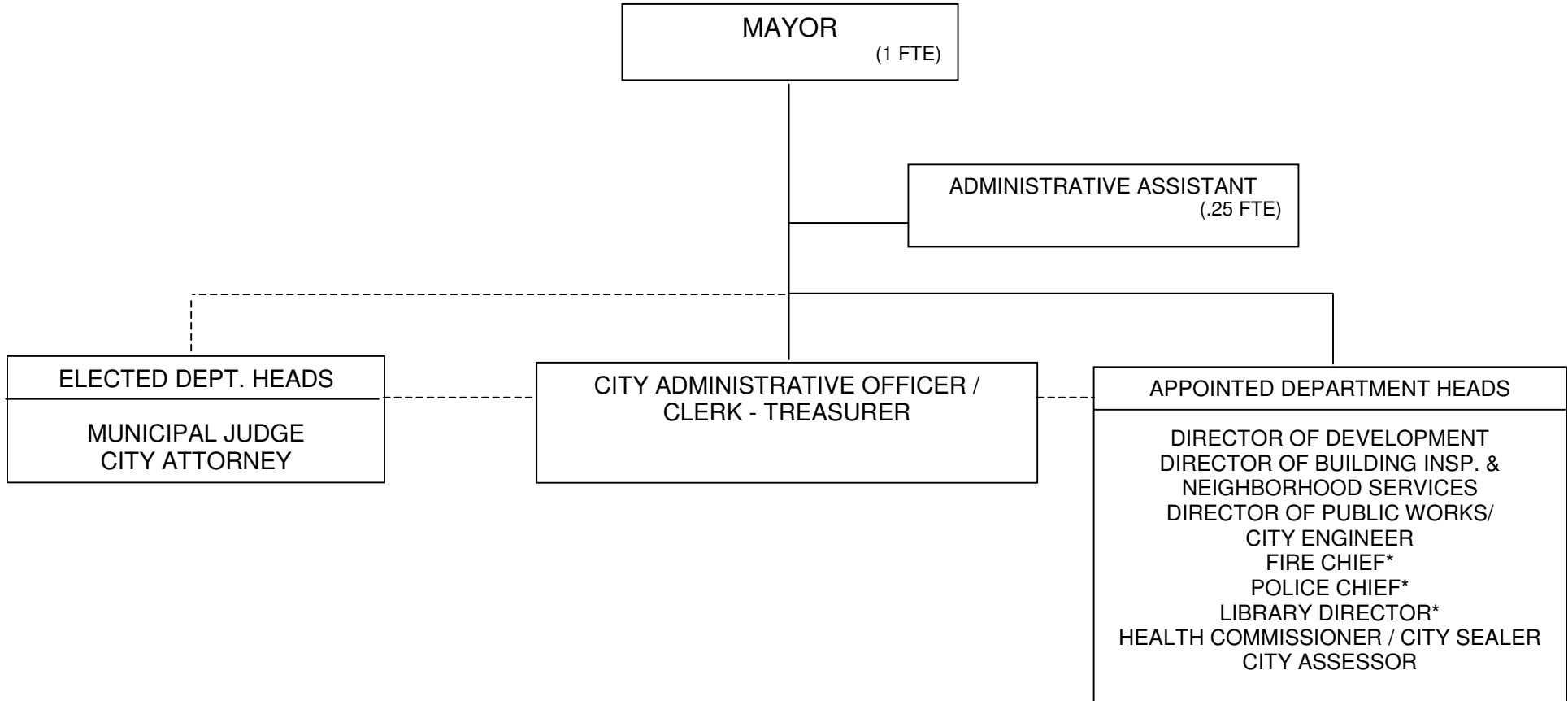
**ORGANIZATIONAL CHART
CITY OF WEST ALLIS
ADVISORY COMMITTEES**

*ADVISORY COMMITTEES *

*APPOINTED BY THE MAYOR AND
CONFIRMED BY THE COMMON
COUNCIL



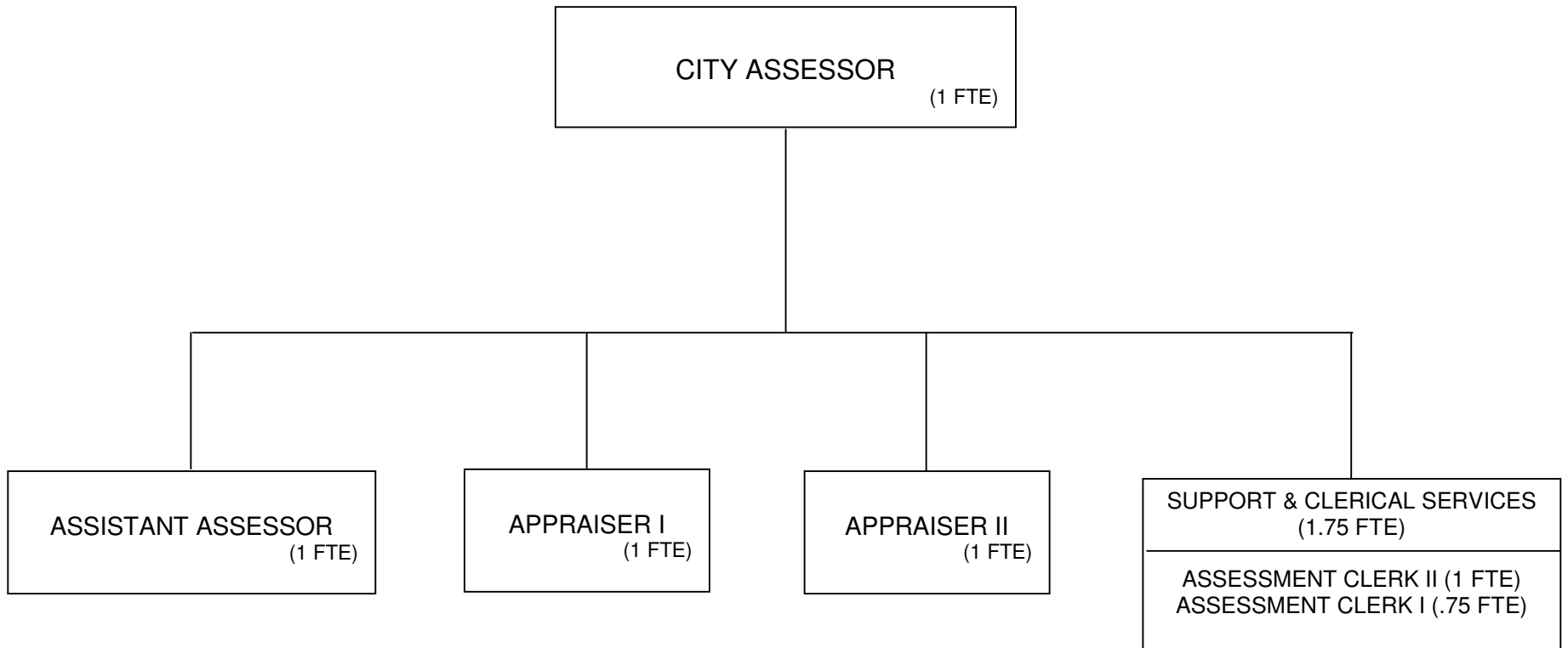
**ORGANIZATIONAL CHART
MAYOR**



*Reports directly to Police & Fire Commission and Library Board respectively.

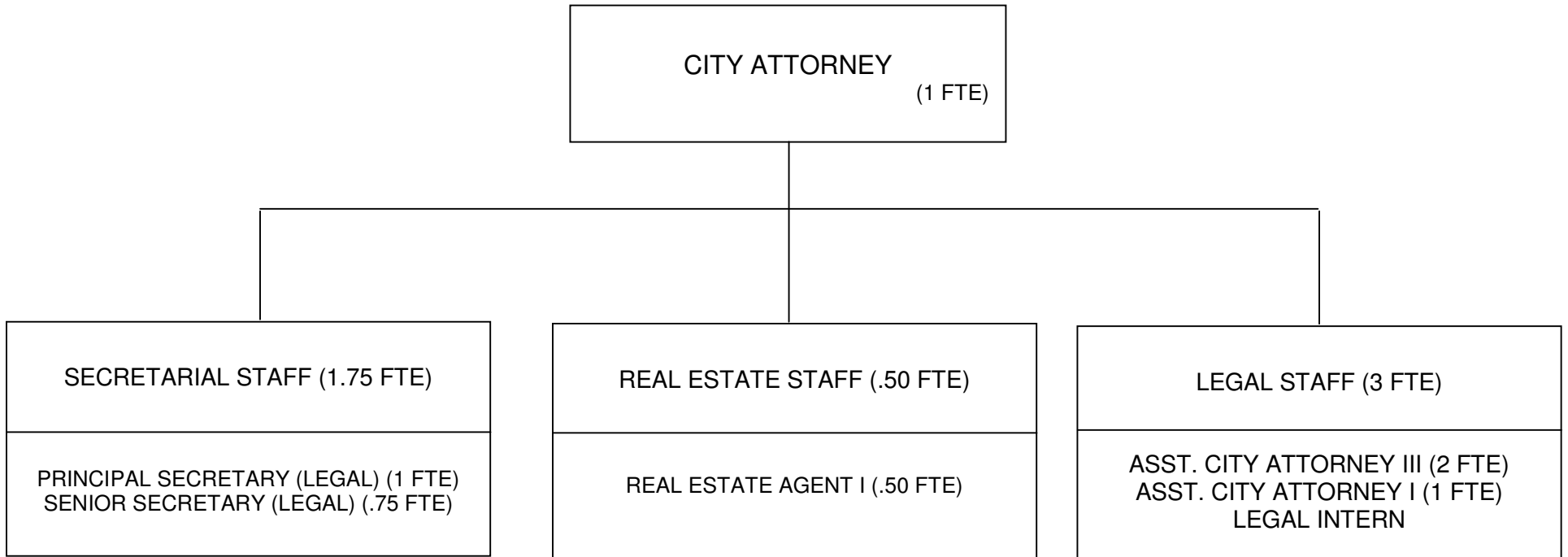
TOTAL POSITIONS: 2 (1.25 FTE)

**ORGANIZATIONAL CHART
ASSESSOR**



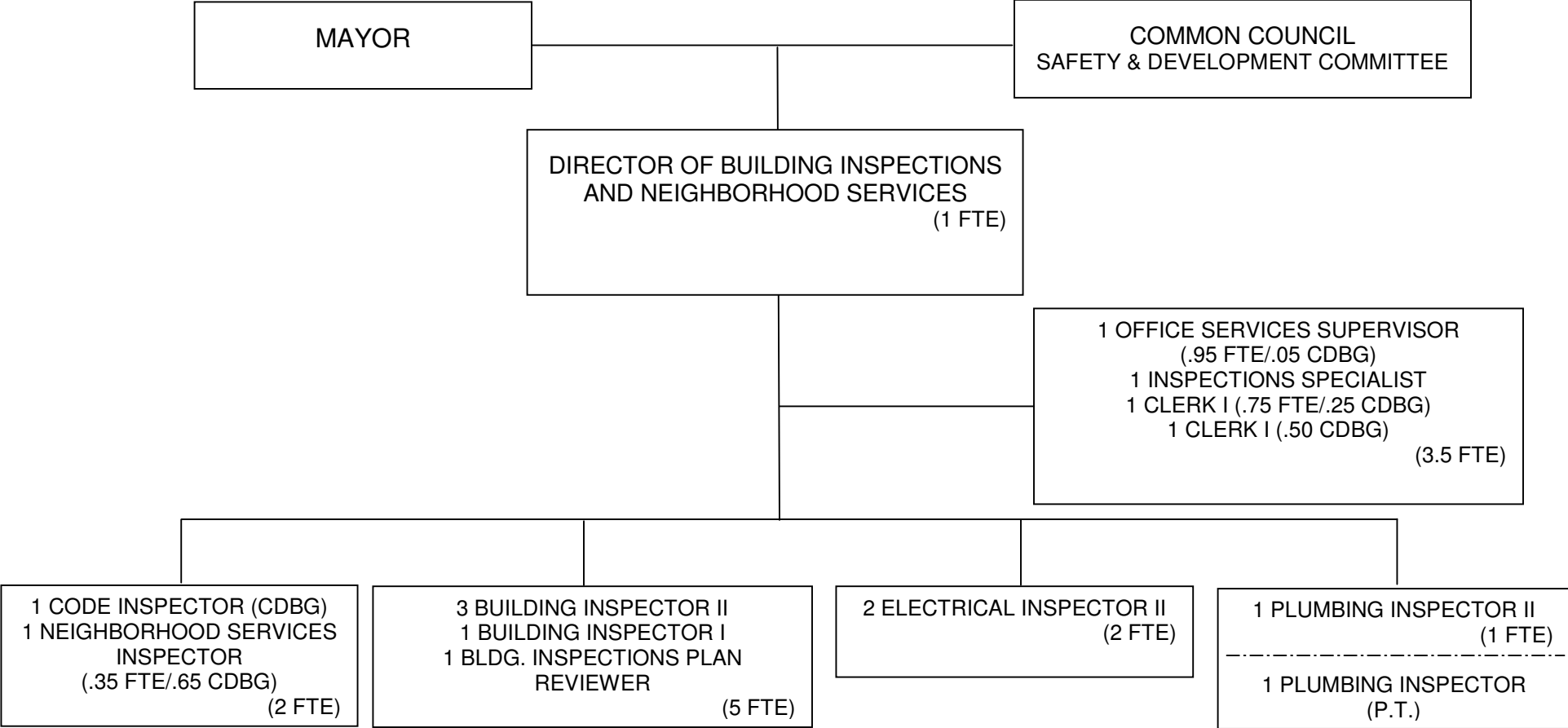
TOTAL POSITIONS: 6 (5.75 FTE)

**ORGANIZATIONAL CHART
ATTORNEY**



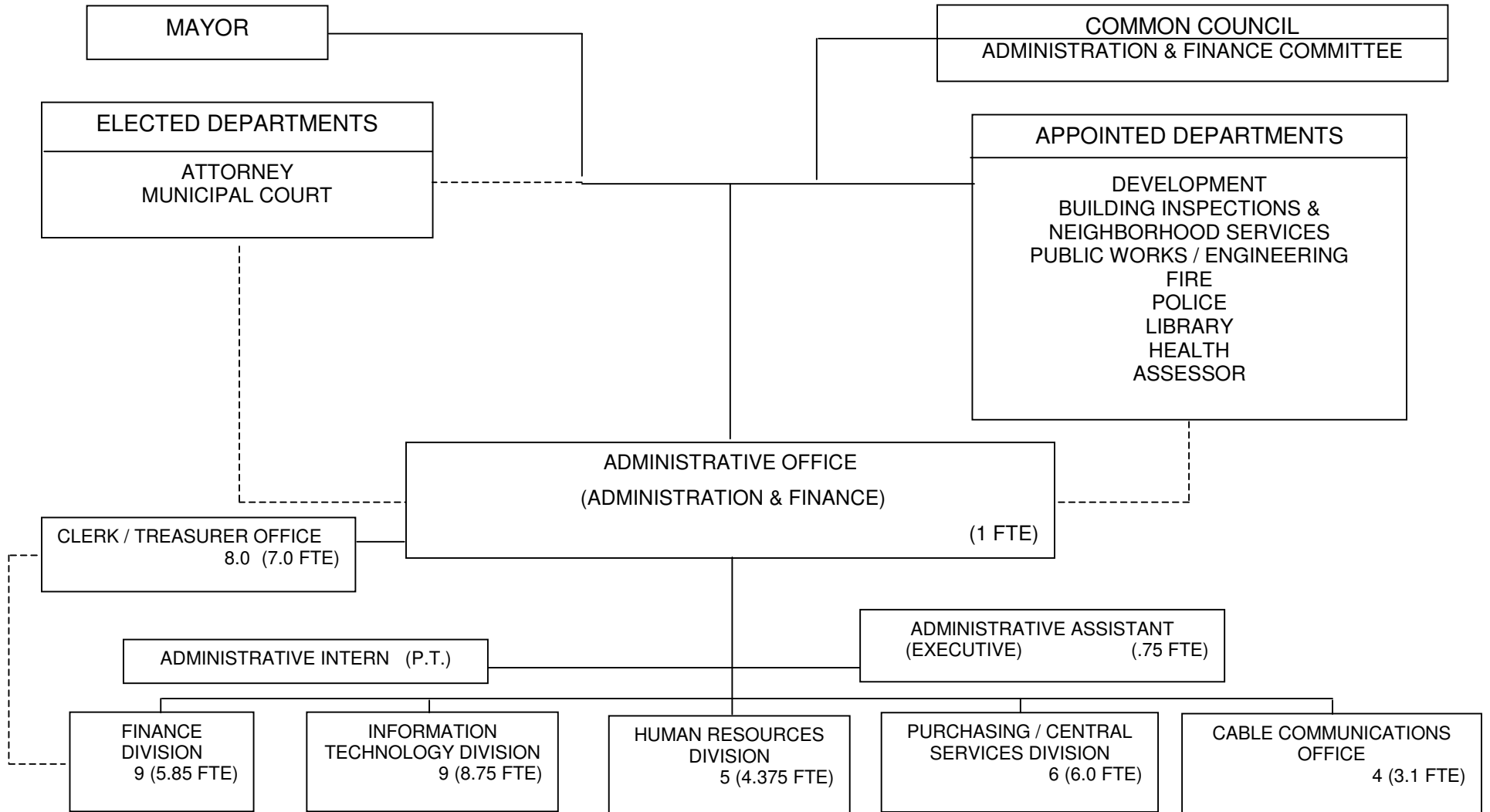
TOTAL POSITIONS: 7 (6.25 FTE)

**ORGANIZATIONAL CHART
BUILDING INSPECTIONS AND NEIGHBORHOOD SERVICES**



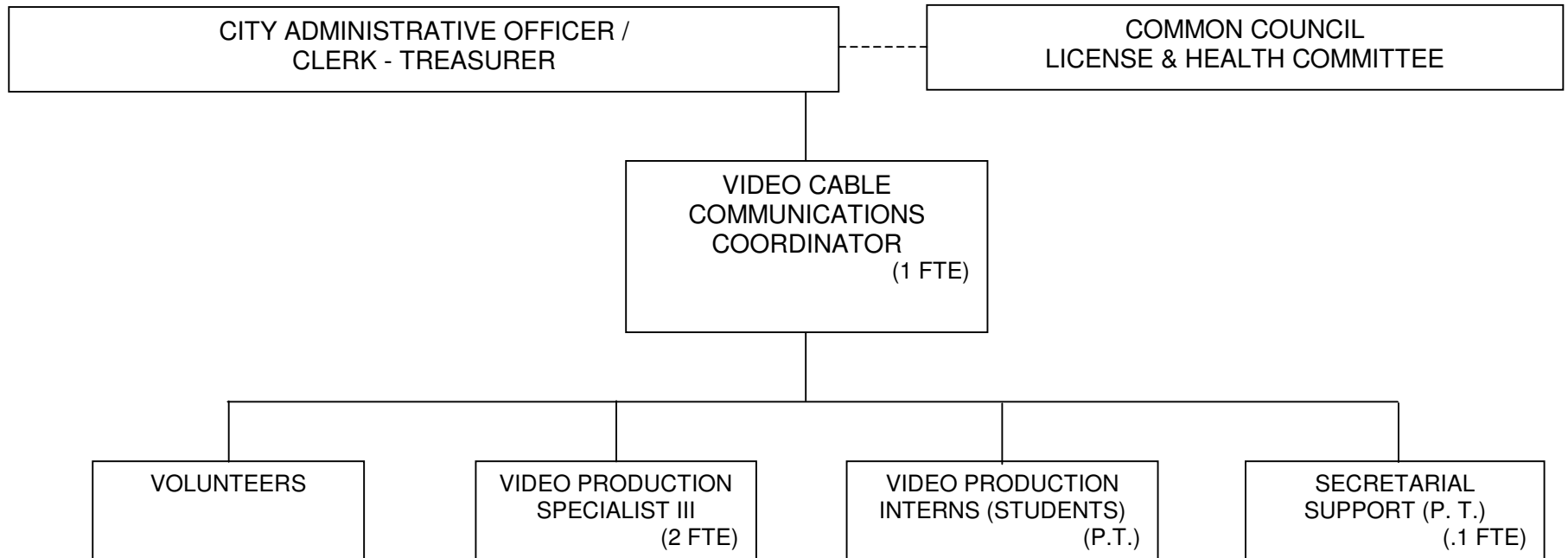
TOTAL POSITIONS: 15 (14.5 FTE)
(12.05 City FTE)
(2.45 CD FTE)

**ORGANIZATIONAL CHART
CITY ADMINISTRATIVE OFFICE
(Administration & Finance)**



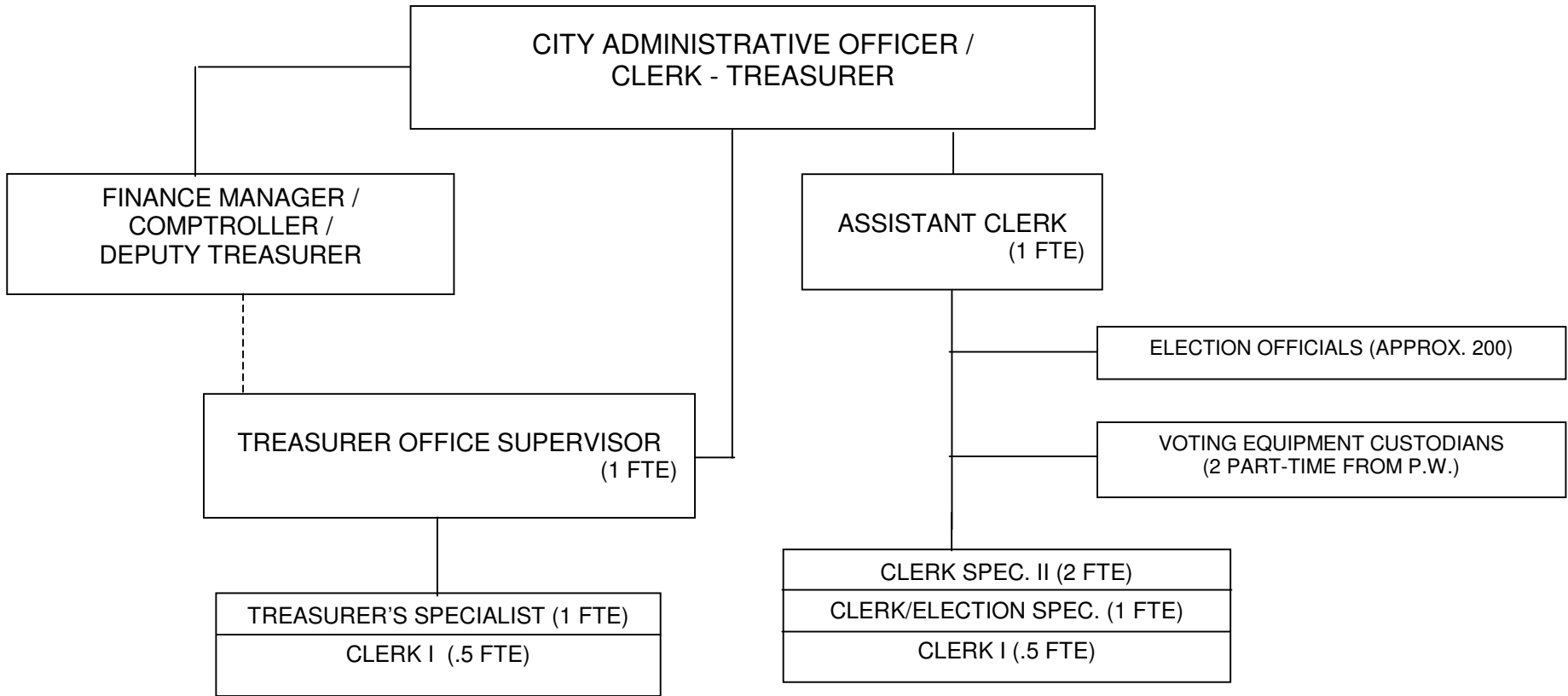
TOTAL POSITIONS: 43 (36.825 FTE)

**ORGANIZATIONAL CHART
CABLE COMMUNICATIONS**



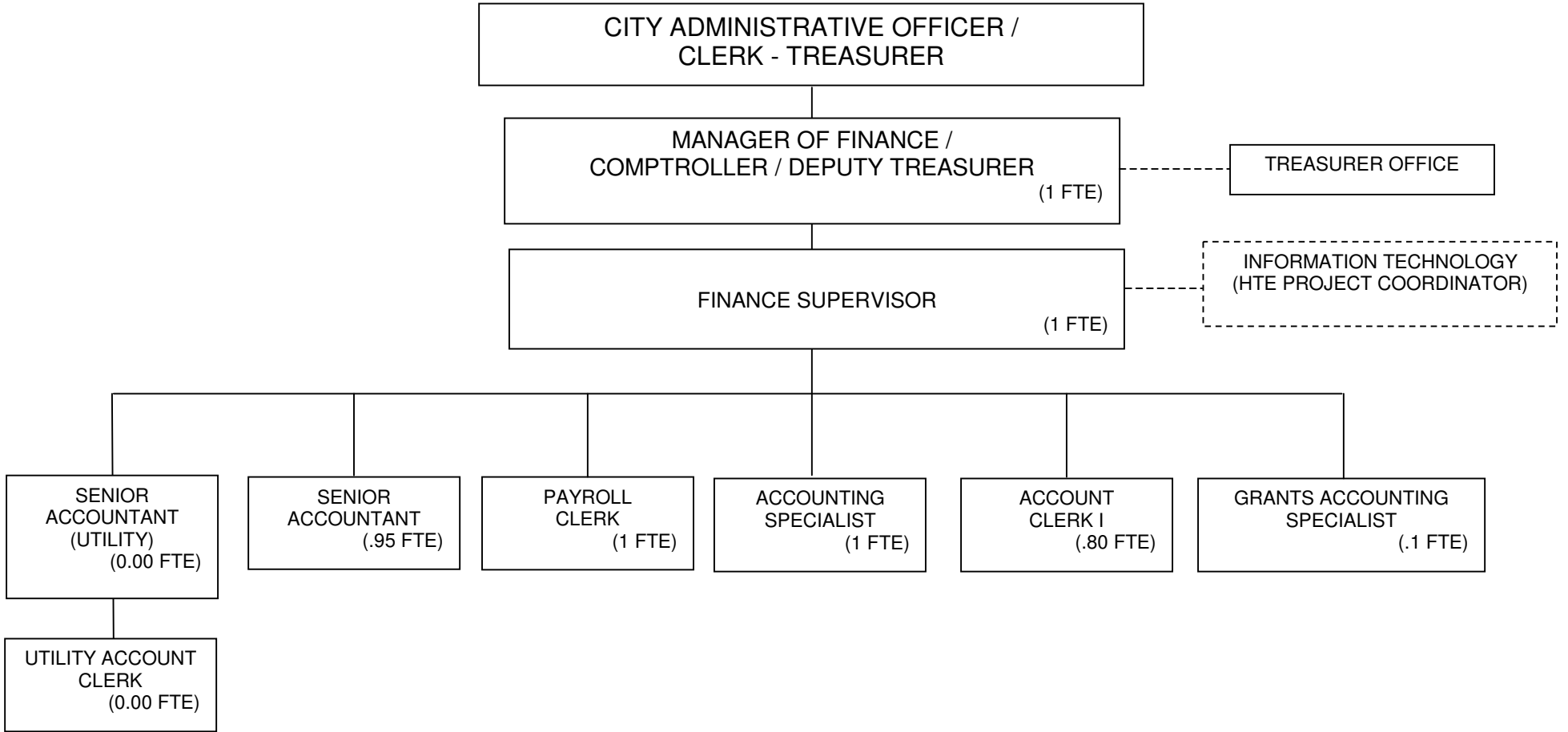
TOTAL POSITIONS: 4 (3.1 FTE)

**ORGANIZATIONAL CHART
CLERK / TREASURER**



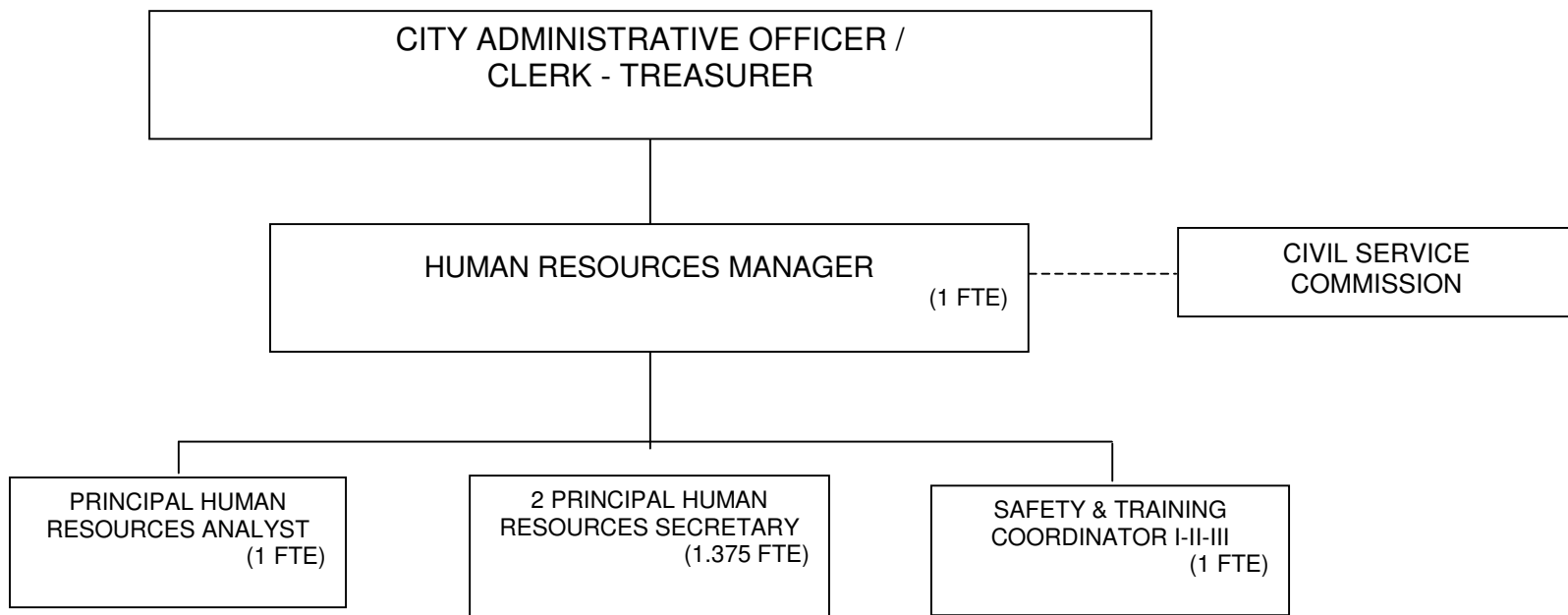
CLERK SUB-TOTAL POSITIONS: 5 (4.5 FTE)
TREASURER SUB-TOTAL POSITIONS: 3 (2.5 FTE)
 TOTAL POSITIONS: 8 (7.0 FTE)
 (5.75 City FTE)
 (1.25 Other FTE)

**ORGANIZATIONAL CHART
FINANCE**



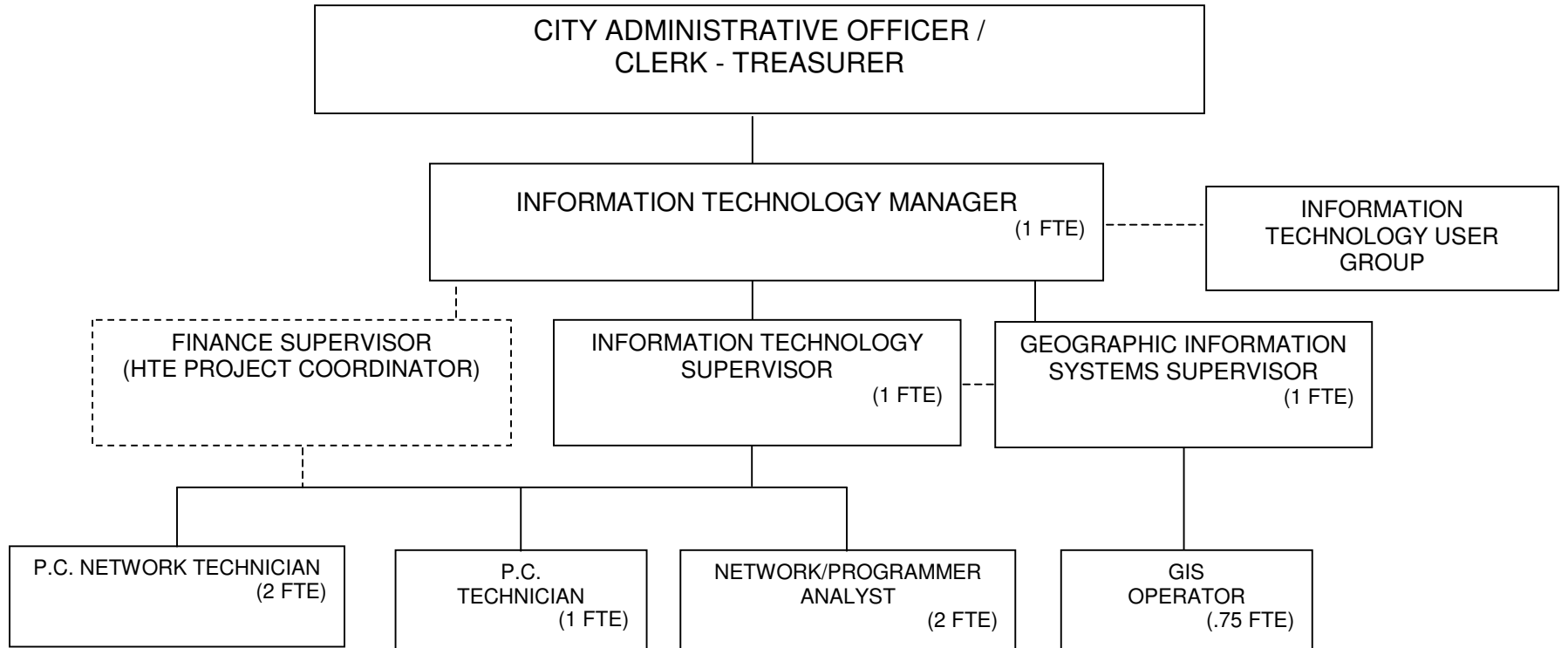
TOTAL POSITIONS: 9 (5.85 FTE)

**ORGANIZATIONAL CHART
HUMAN RESOURCES**



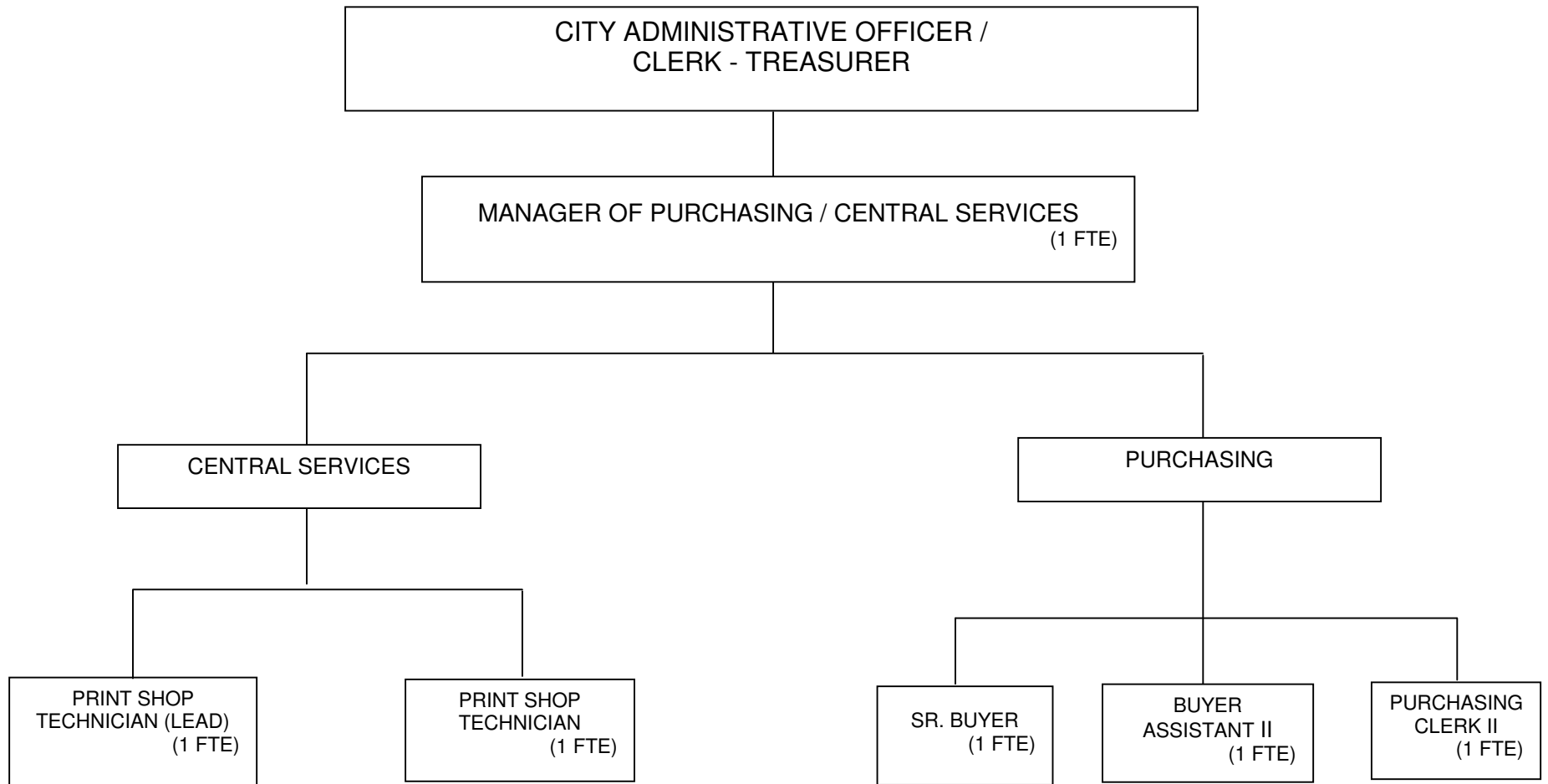
TOTAL POSITIONS: 5 (4.375 FTE)

ORGANIZATIONAL CHART INFORMATION TECHNOLOGY



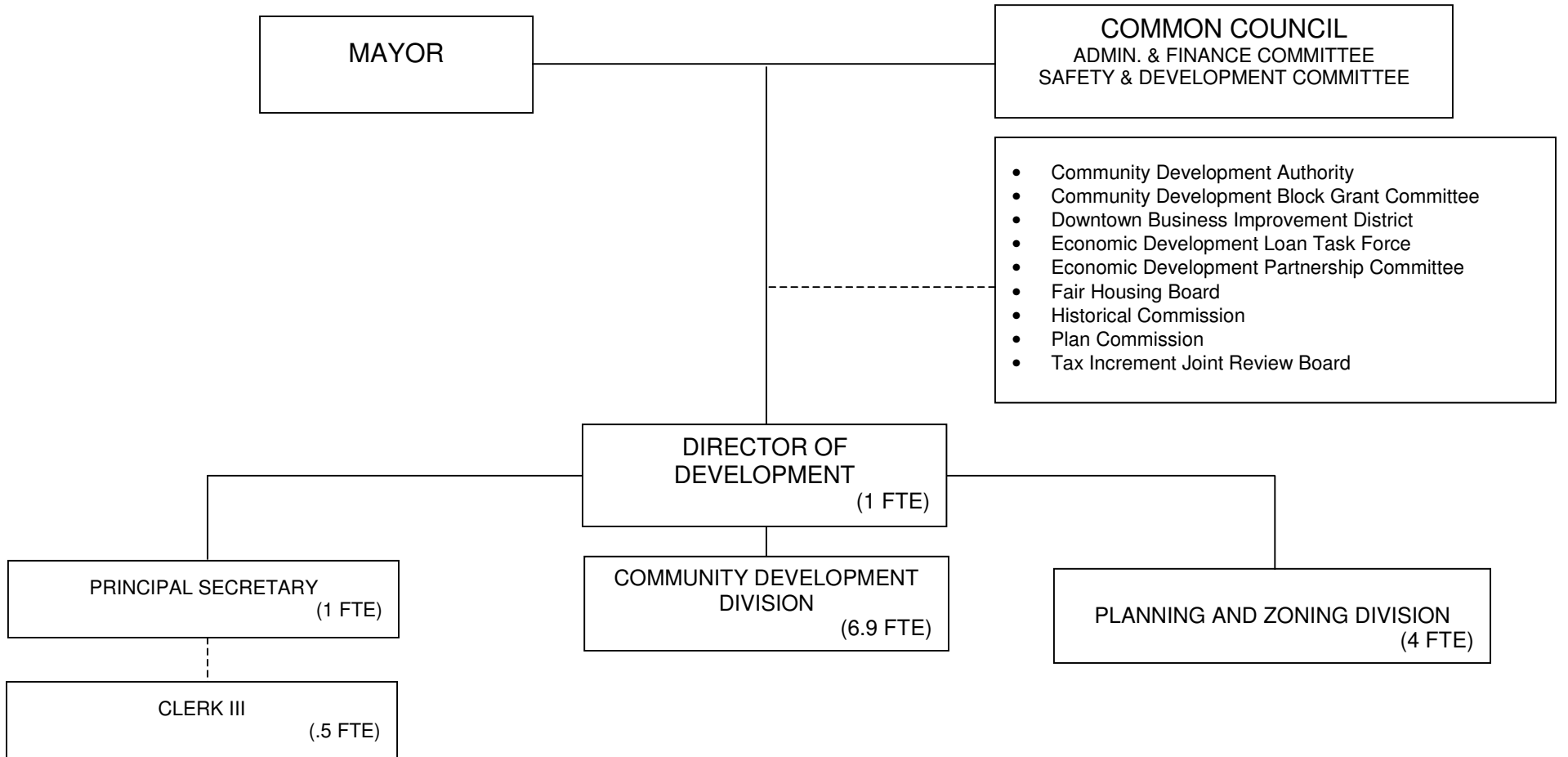
TOTAL POSITIONS: 9 (8.75 FTE)

**ORGANIZATIONAL CHART
PURCHASING / CENTRAL SERVICES**



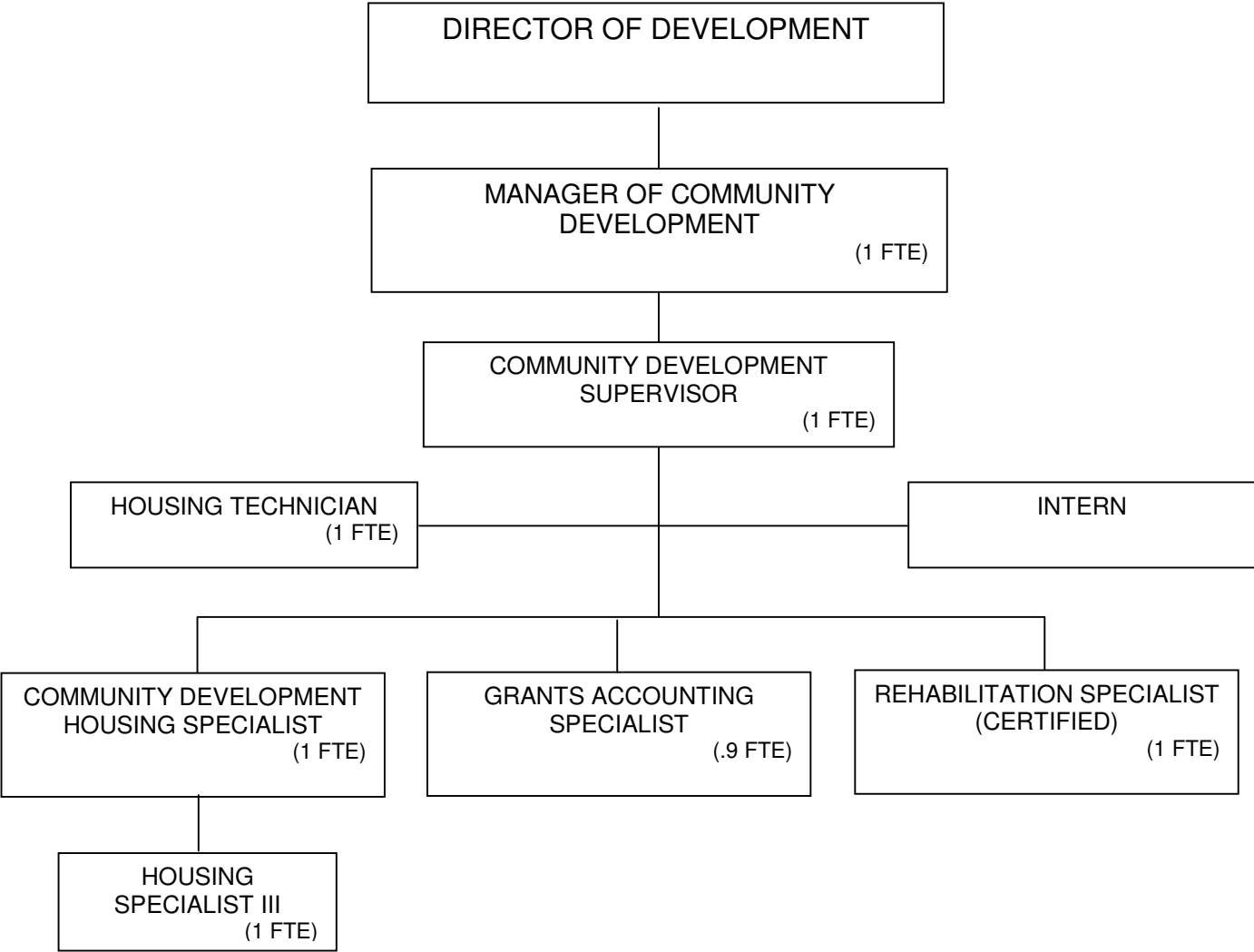
TOTAL POSITIONS: 6 (6 FTE)

ORGANIZATIONAL CHART DEVELOPMENT



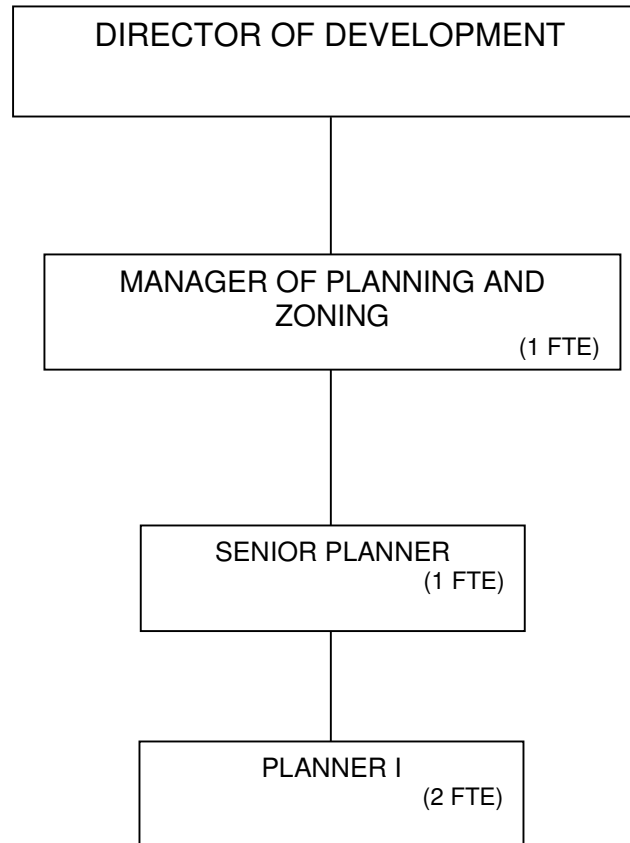
TOTAL POSITIONS: 14 (13.4 FTE)

**ORGANIZATIONAL CHART
COMMUNITY DEVELOPMENT**



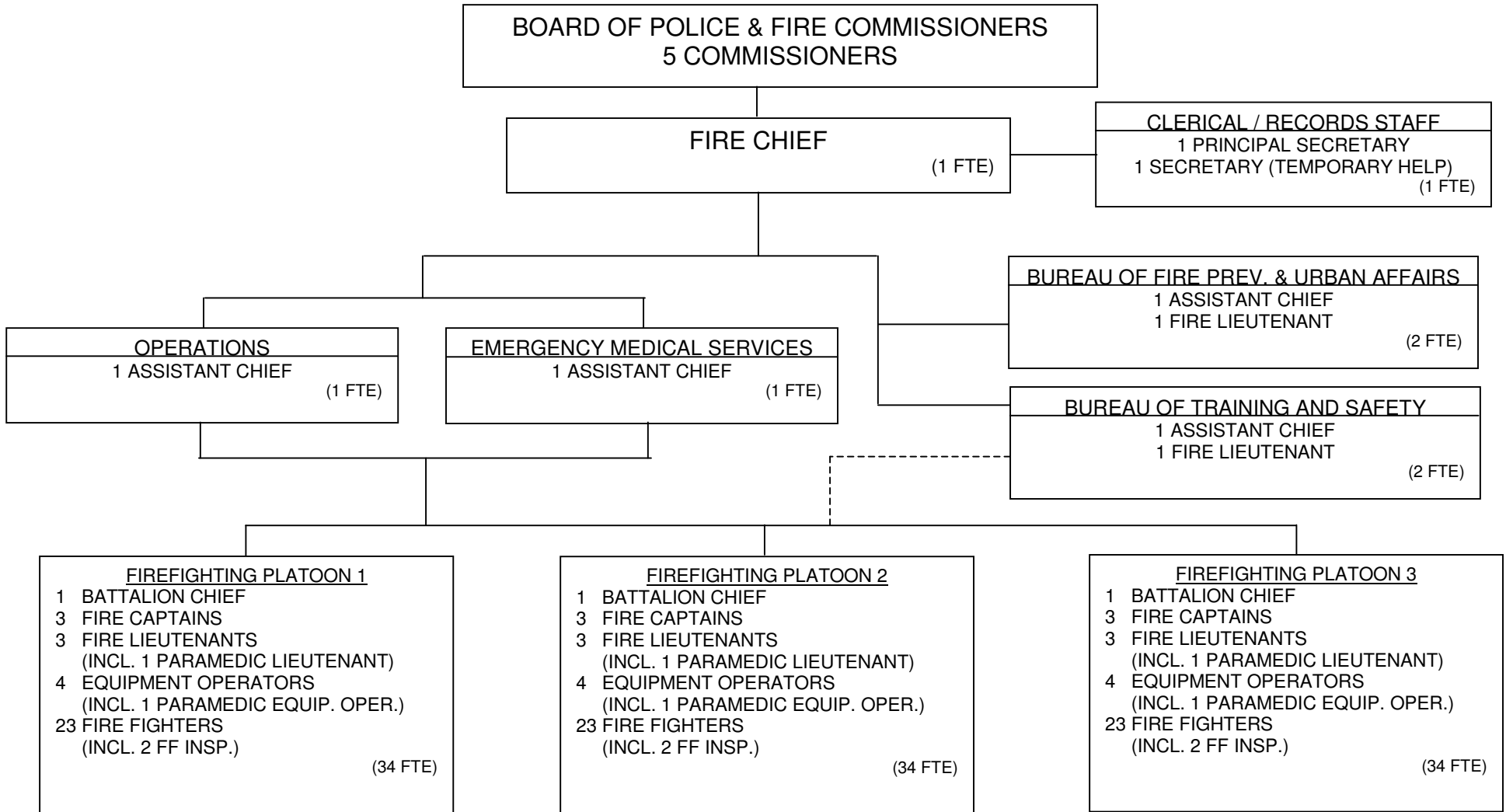
TOTAL POSITIONS: 7 (6.9 FTE)

**ORGANIZATIONAL CHART
PLANNING AND ZONING**



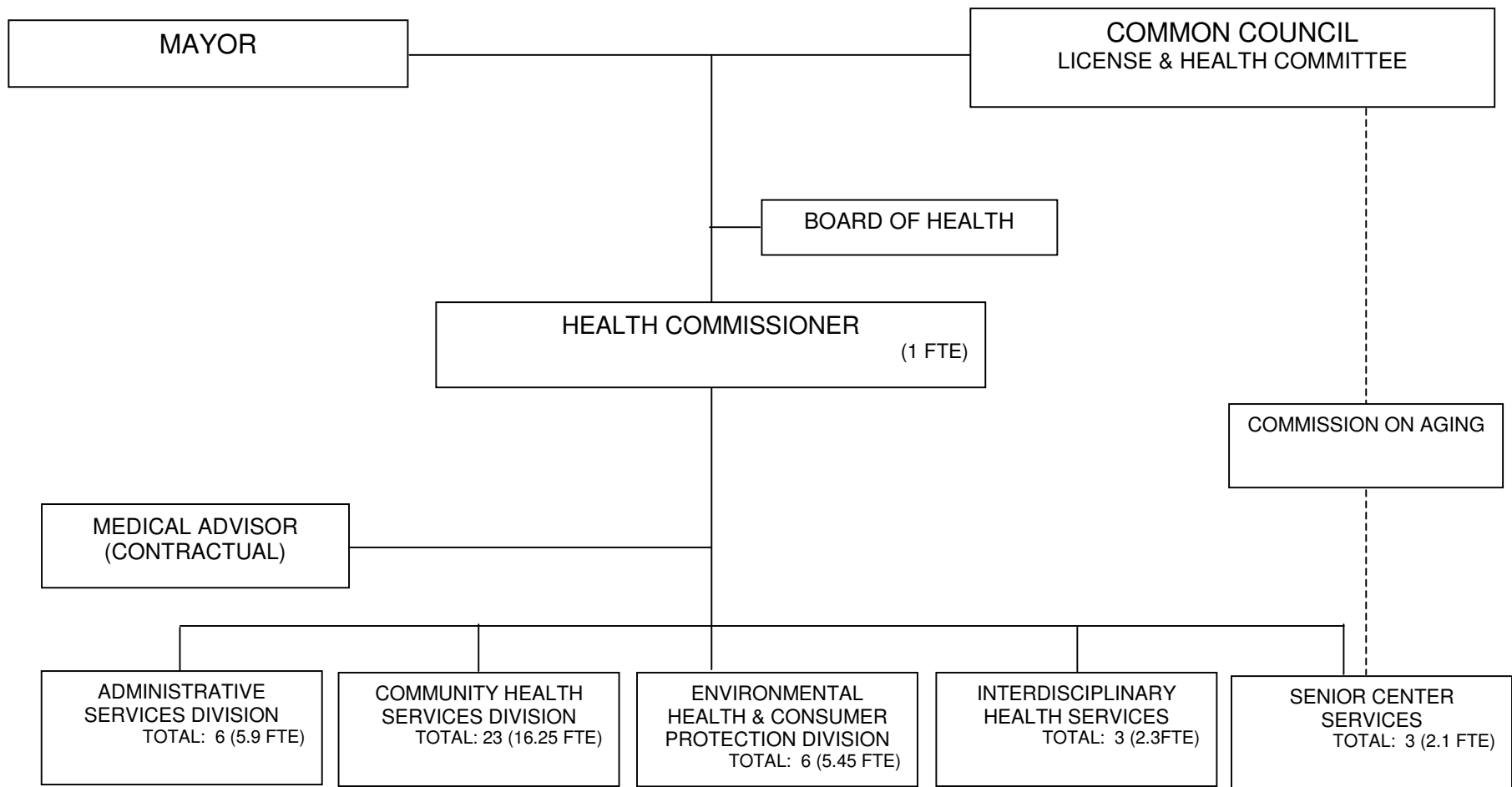
TOTAL POSITIONS: 4 (4 FTE)
(3.4 City FTE)
(.6 Other FTE)

ORGANIZATIONAL CHART FIRE



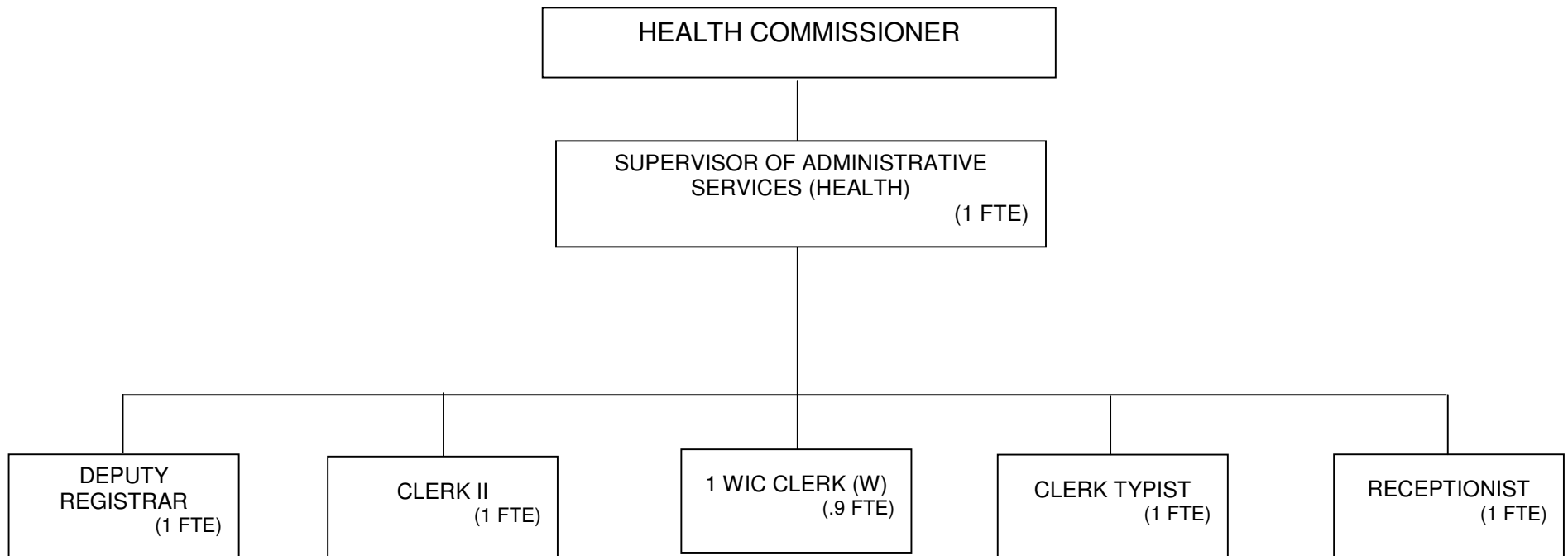
TOTAL POSITIONS: 110 (110 FTE)

ORGANIZATIONAL CHART HEALTH



TOTAL POSITIONS: 42 (33 FTE)

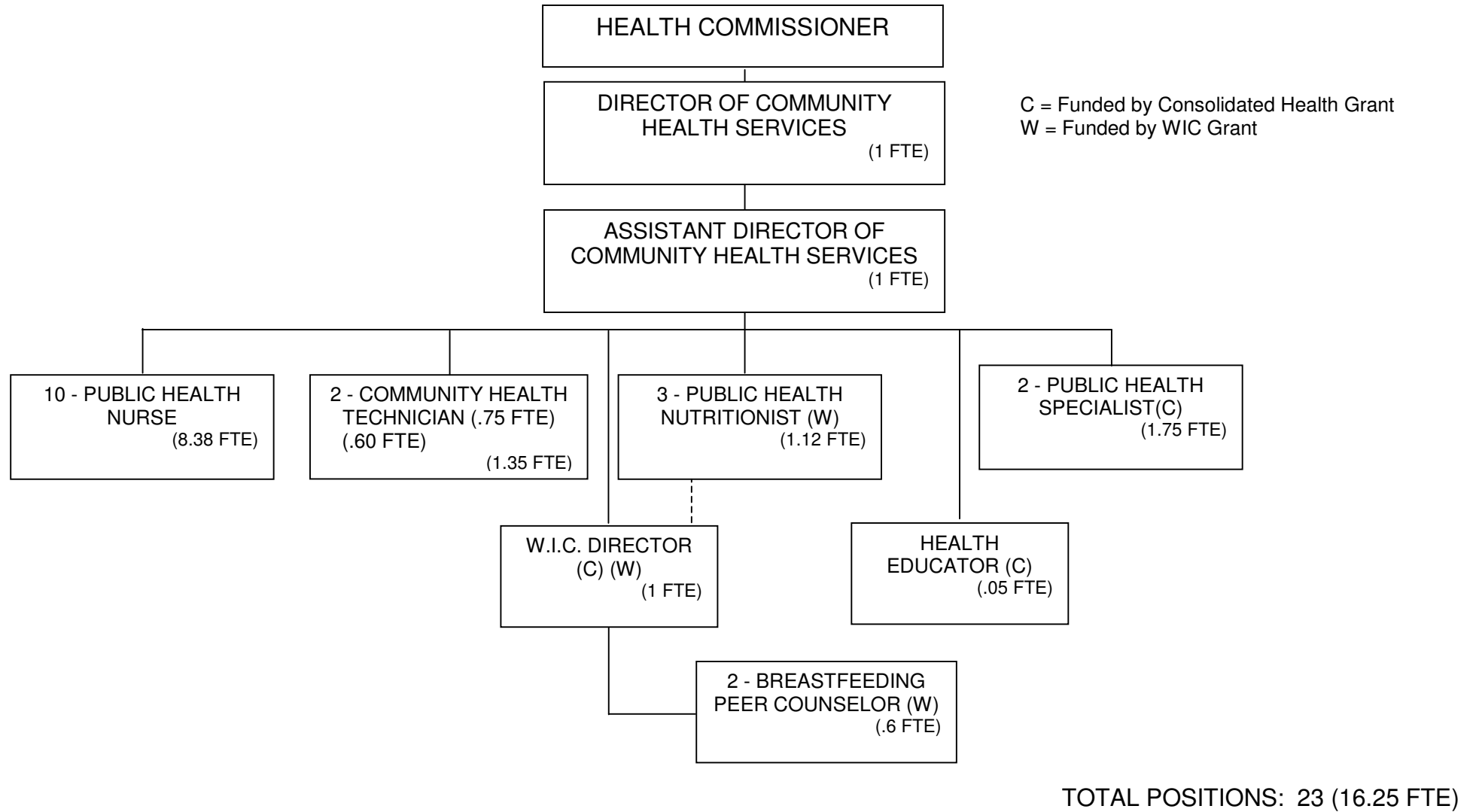
**ORGANIZATIONAL CHART
HEALTH
HEALTH ADMINISTRATIVE SERVICES**



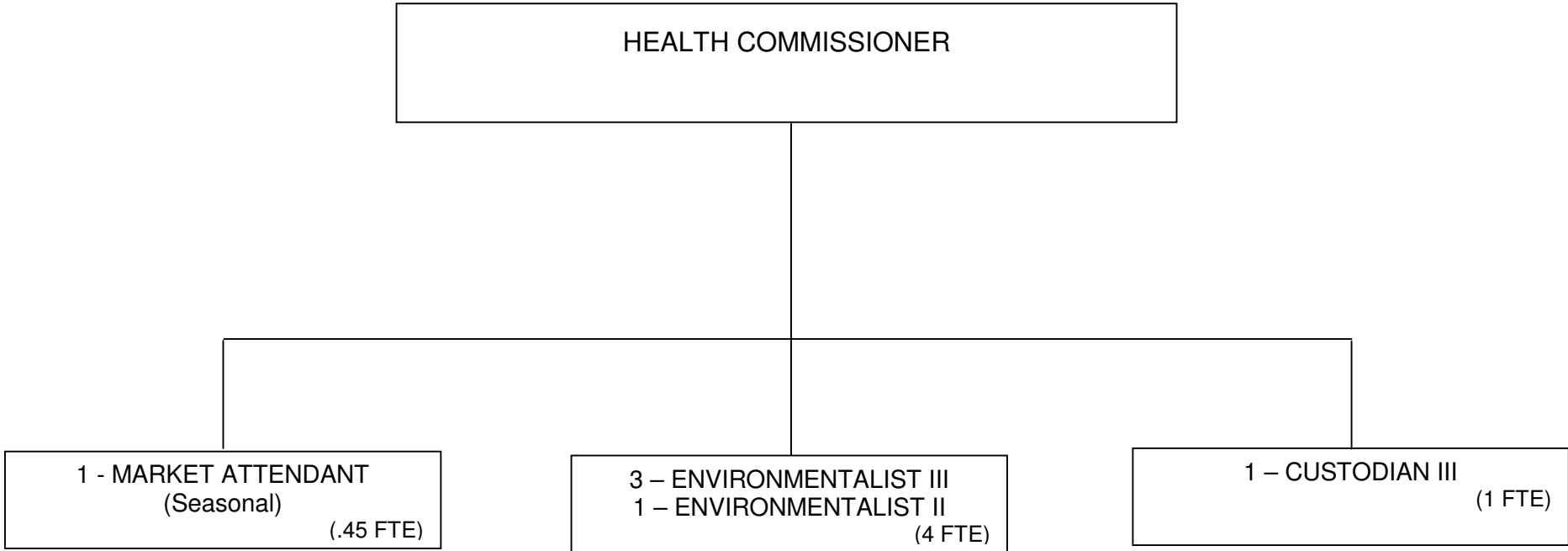
(W) Funded by WIC Grant

TOTAL POSITIONS: 6 (5.9 FTE)

**ORGANIZATIONAL CHART
HEALTH
COMMUNITY HEALTH SERVICES**

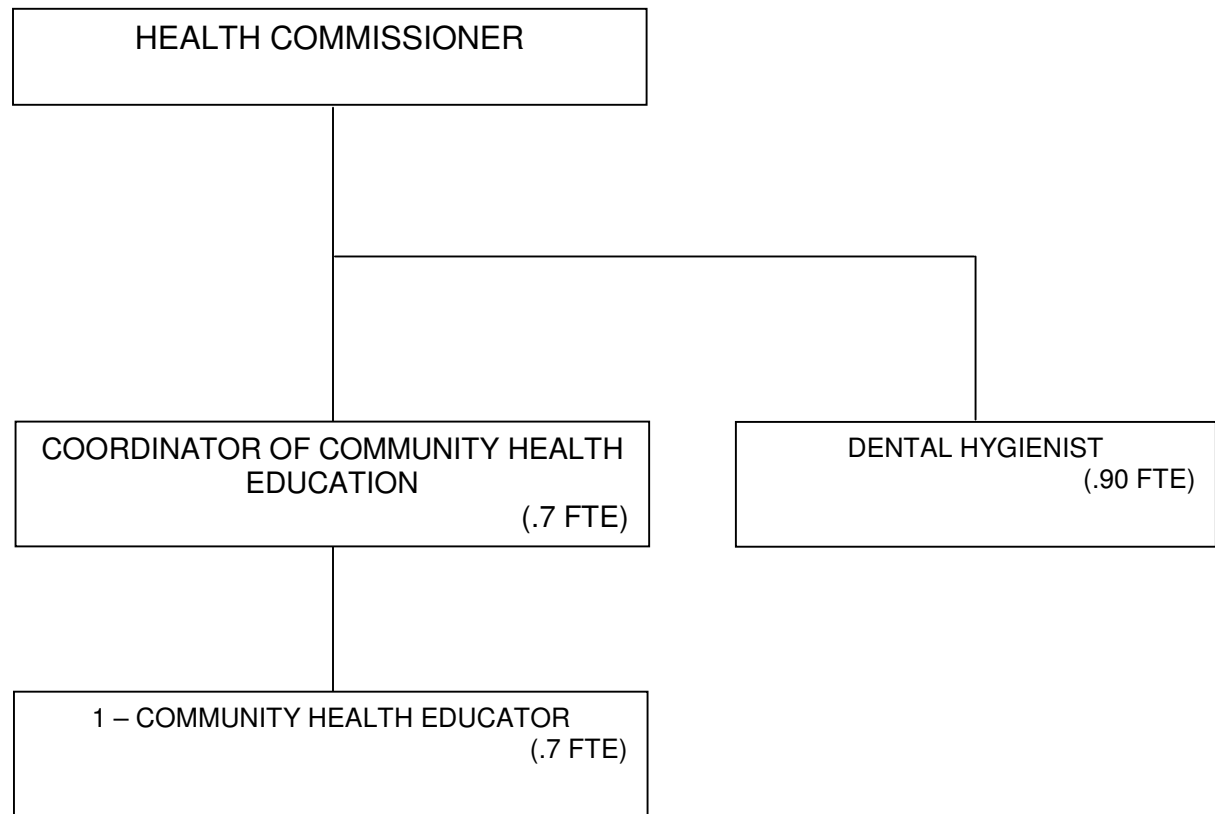


**ORGANIZATIONAL CHART
HEALTH
ENVIRONMENTAL HEALTH & CONSUMER PROTECTION**



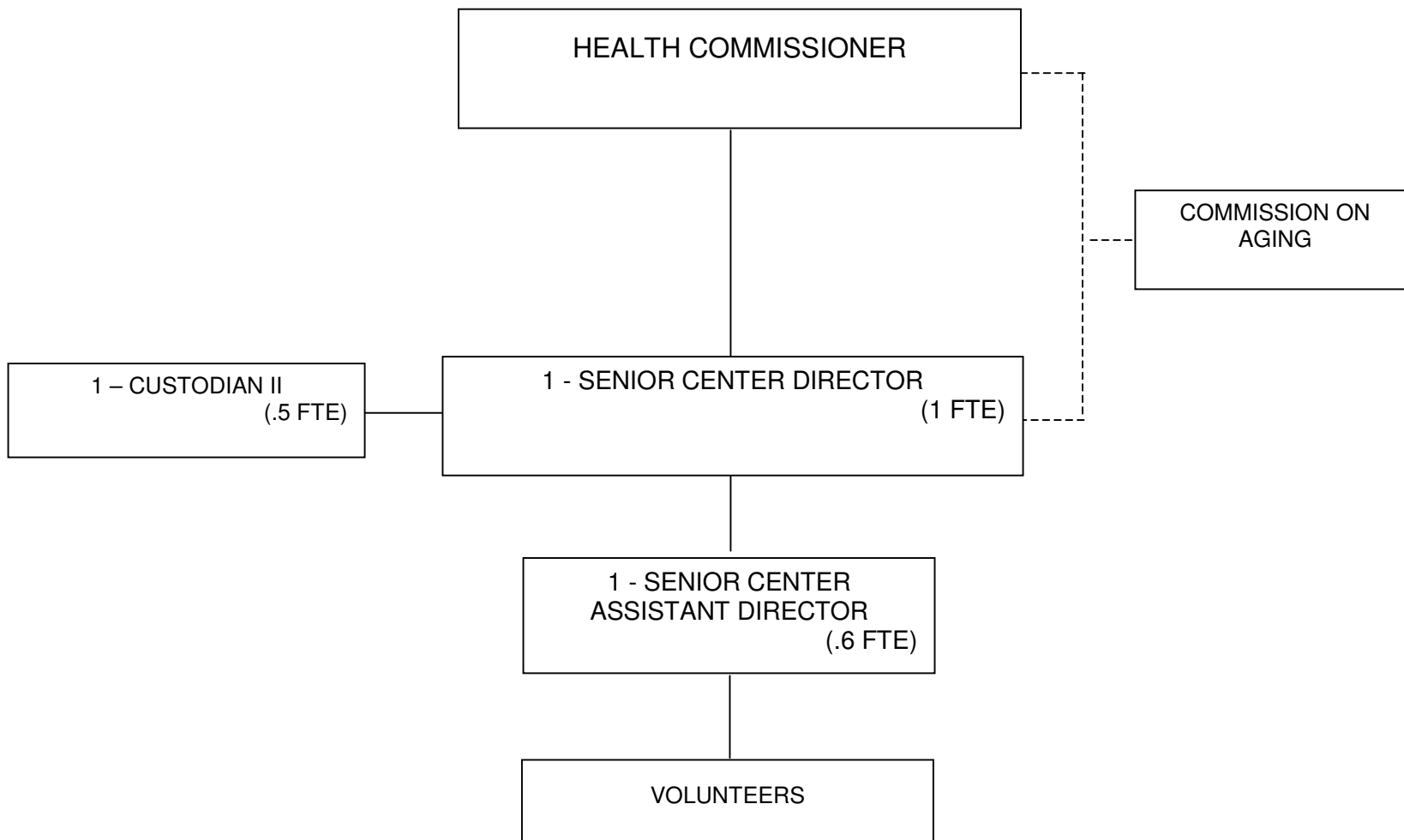
TOTAL POSITIONS: 6 (5.45 FTE)

**ORGANIZATIONAL CHART
HEALTH
INTERDISCIPLINARY HEALTH SERVICES**



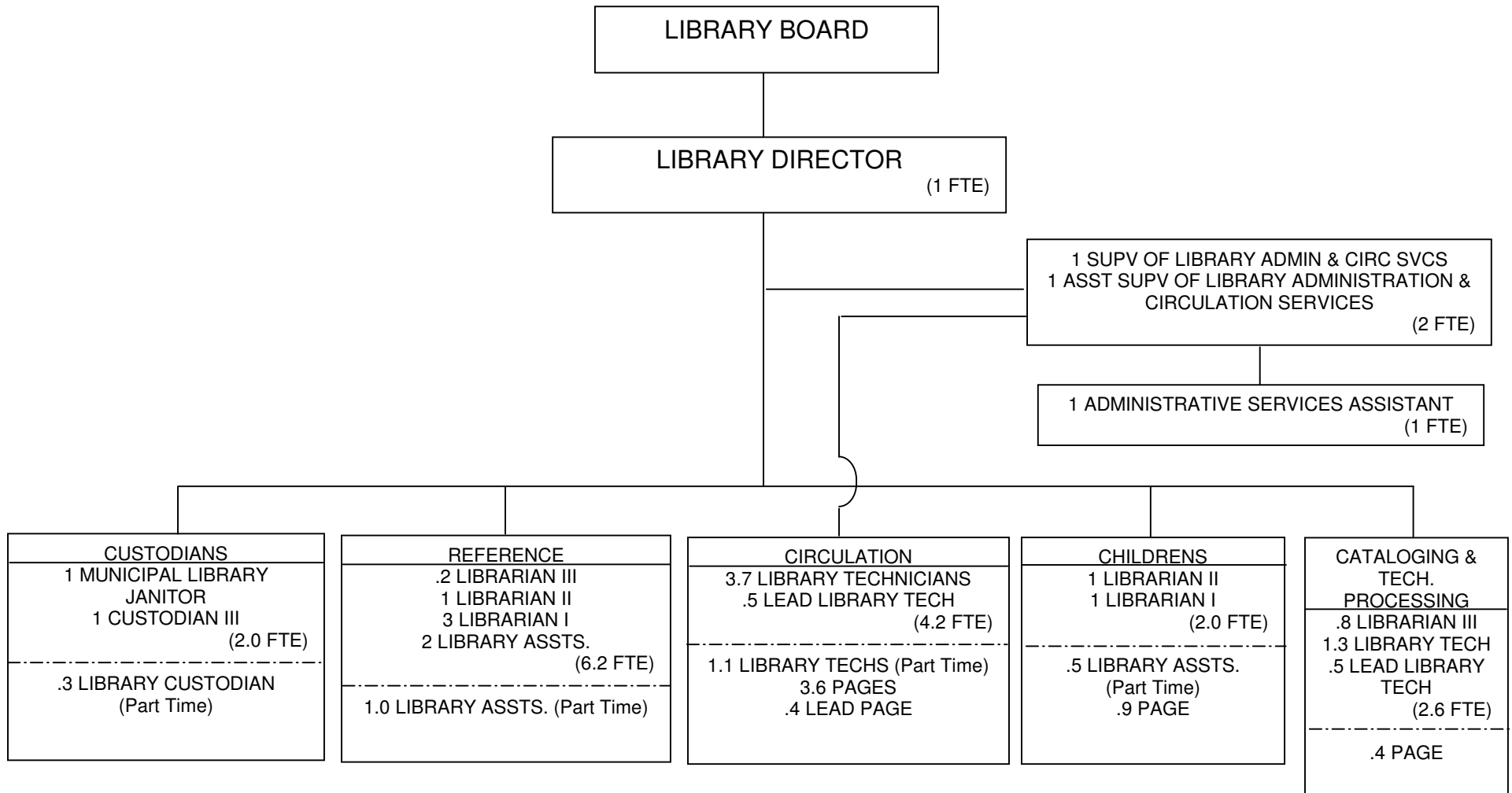
TOTAL POSITIONS: 3 (2.3 FTE)

**ORGANIZATIONAL CHART
SENIOR CENTER**



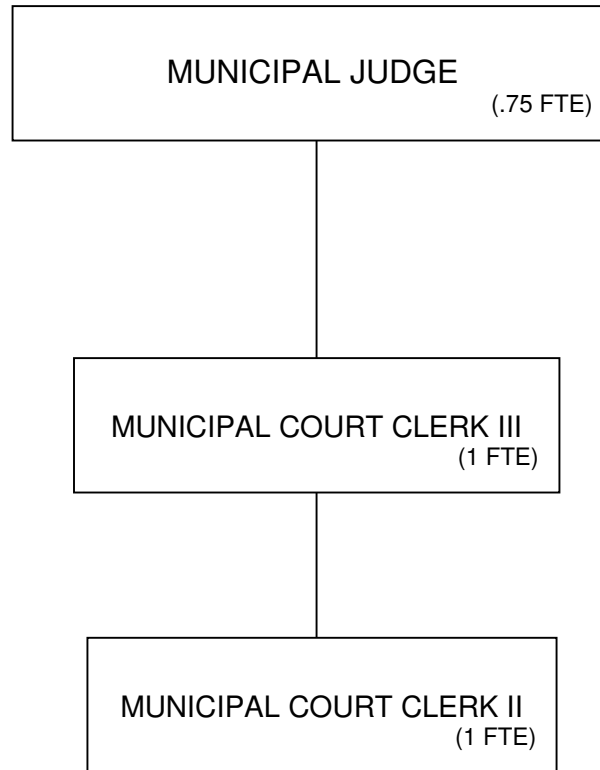
TOTAL POSITIONS: 3 (2.1 FTE)

ORGANIZATIONAL CHART LIBRARY



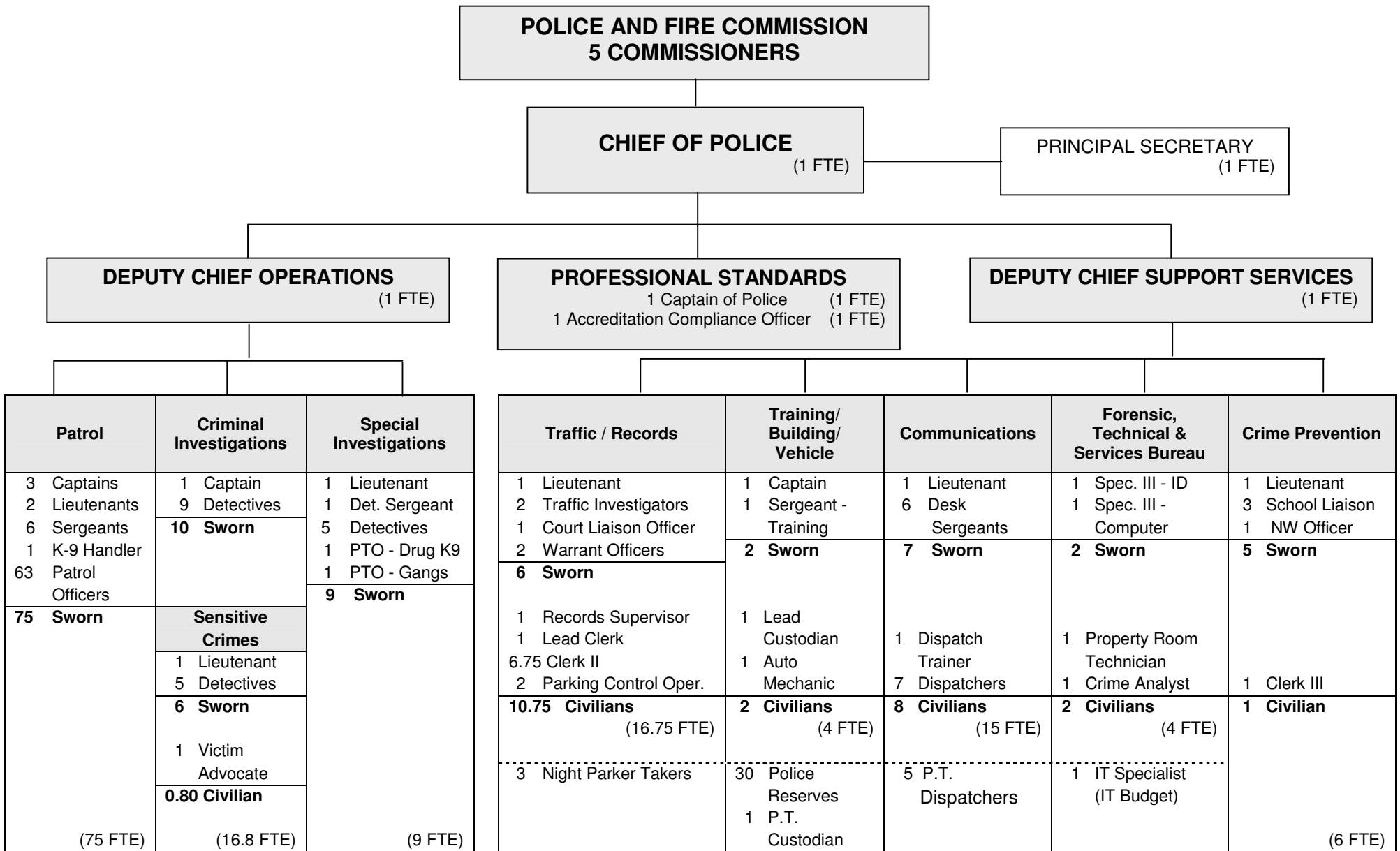
TOTAL POSITIONS: 51 (29.2 FTE)
(21.0 FT FTE)
(8.2 PT FTE)

**ORGANIZATIONAL CHART
MUNICIPAL COURT**



TOTAL POSITIONS: 3 (2.75 FTE)

ORGANIZATIONAL CHART POLICE

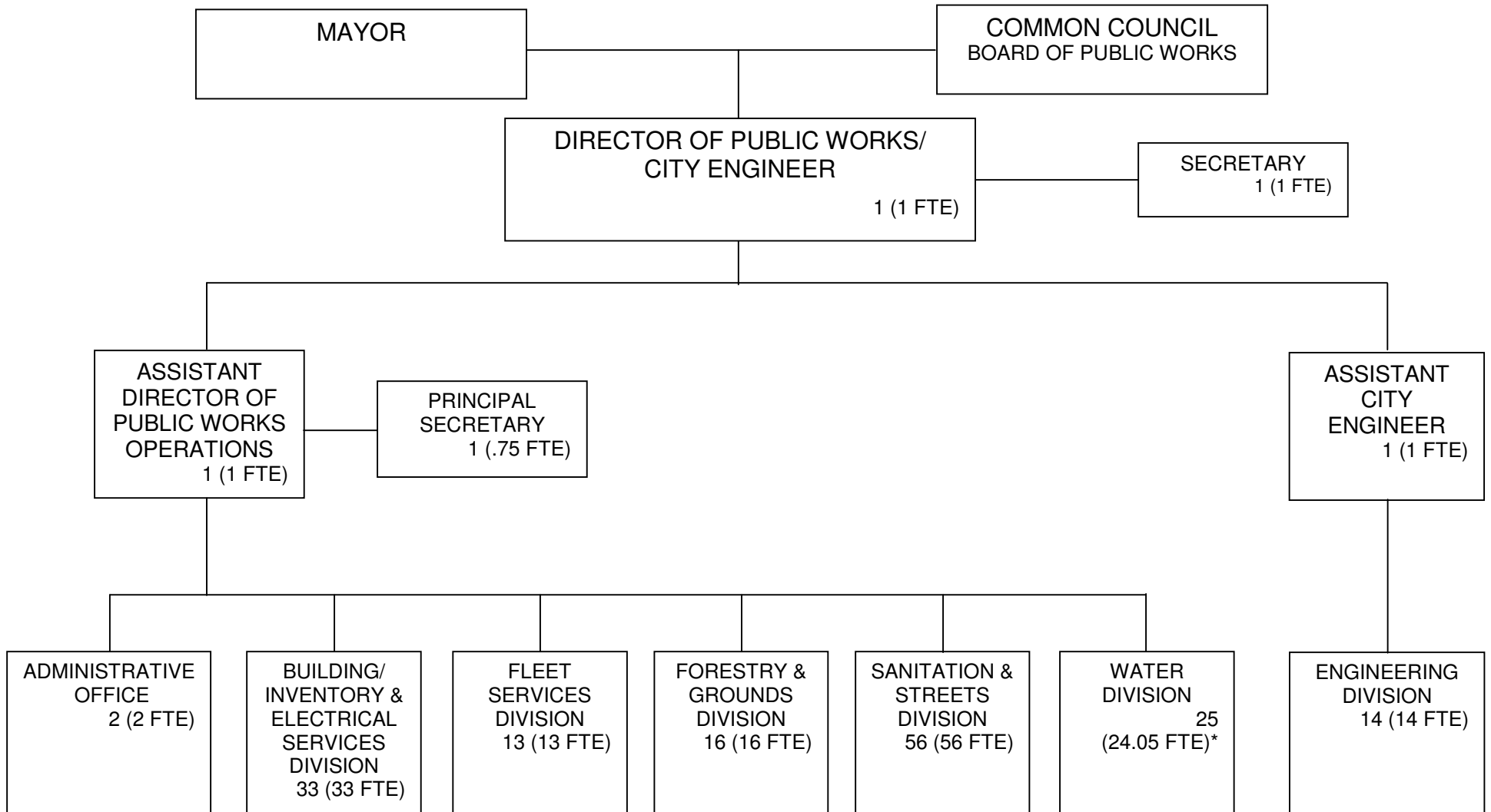


*Authorization includes the equivalent of five (5) FTE's, which were reduced during 2010. (This reduced number of Police Union positions remains in the 2011 City budget, in accordance with the final results of the recent collective bargaining process with the Police Union.) These five positions are not listed above.

*132.00	Sworn Employees
25.55	Civilians
157.55	Total Employees

Crossing Guards (20) are handled by contract with private vendor.

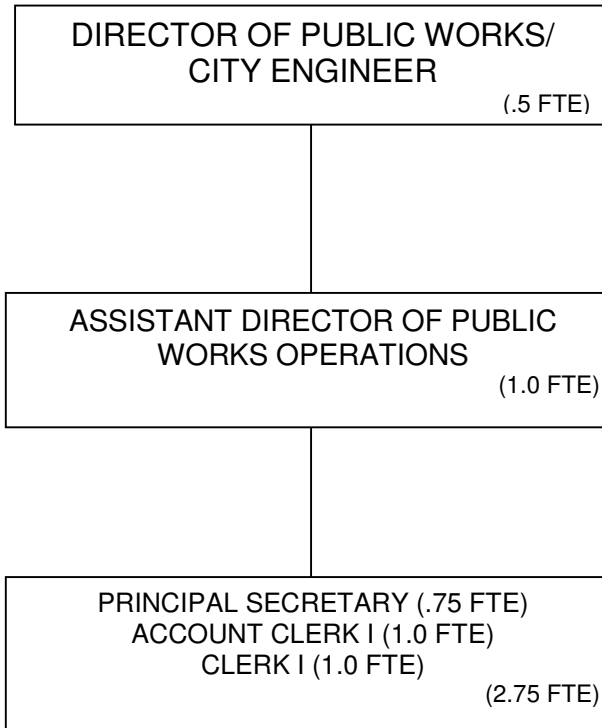
ORGANIZATIONAL CHART PUBLIC WORKS / ENGINEERING



*2.05 POSITIONS UNDER THE DIRECTION OF THE FINANCE DIVISION

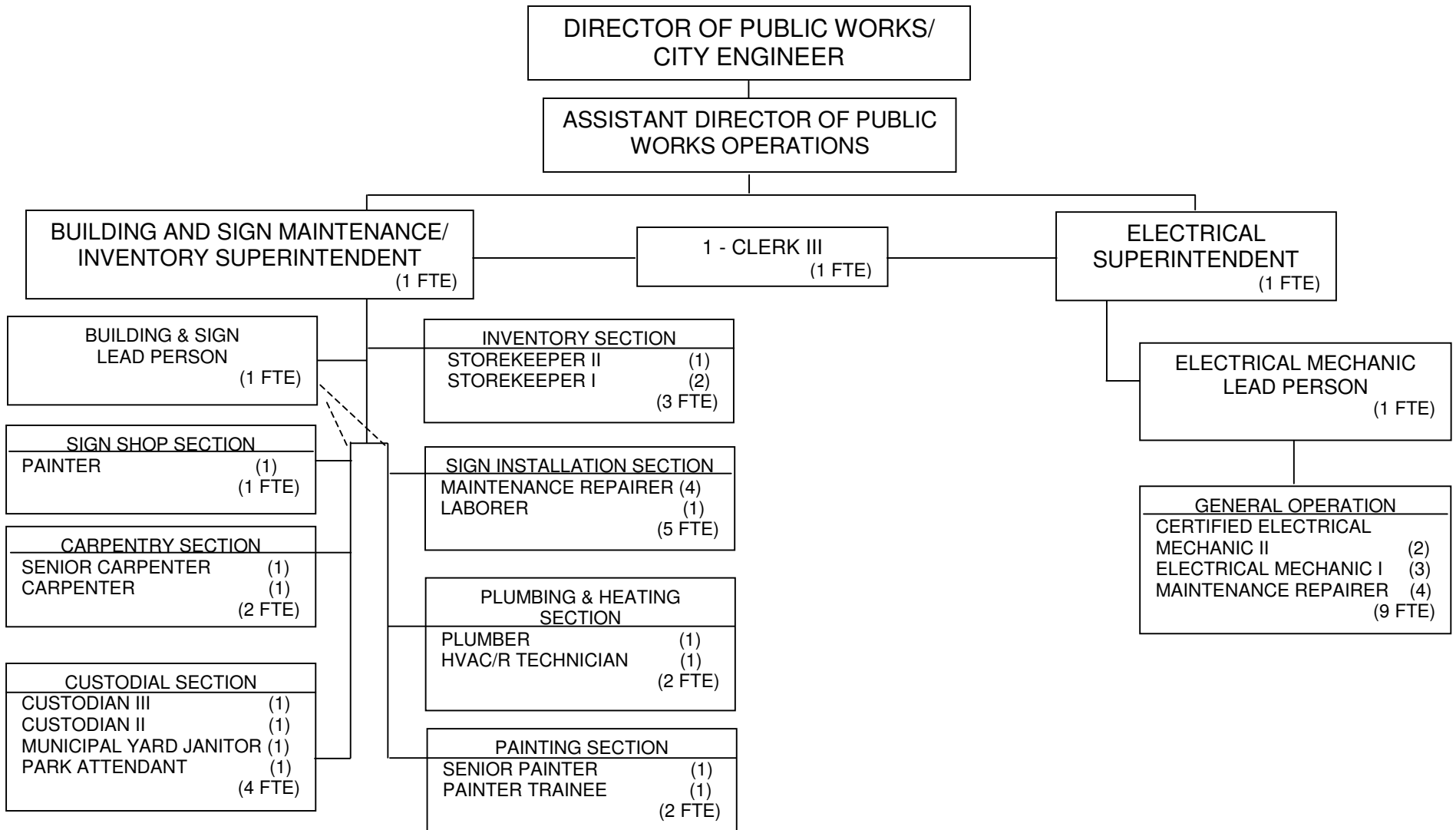
TOTAL POSITIONS: 164 (162.8 FTE)

**ORGANIZATIONAL CHART
PUBLIC WORKS / ENGINEERING
ADMINISTRATIVE OFFICE**



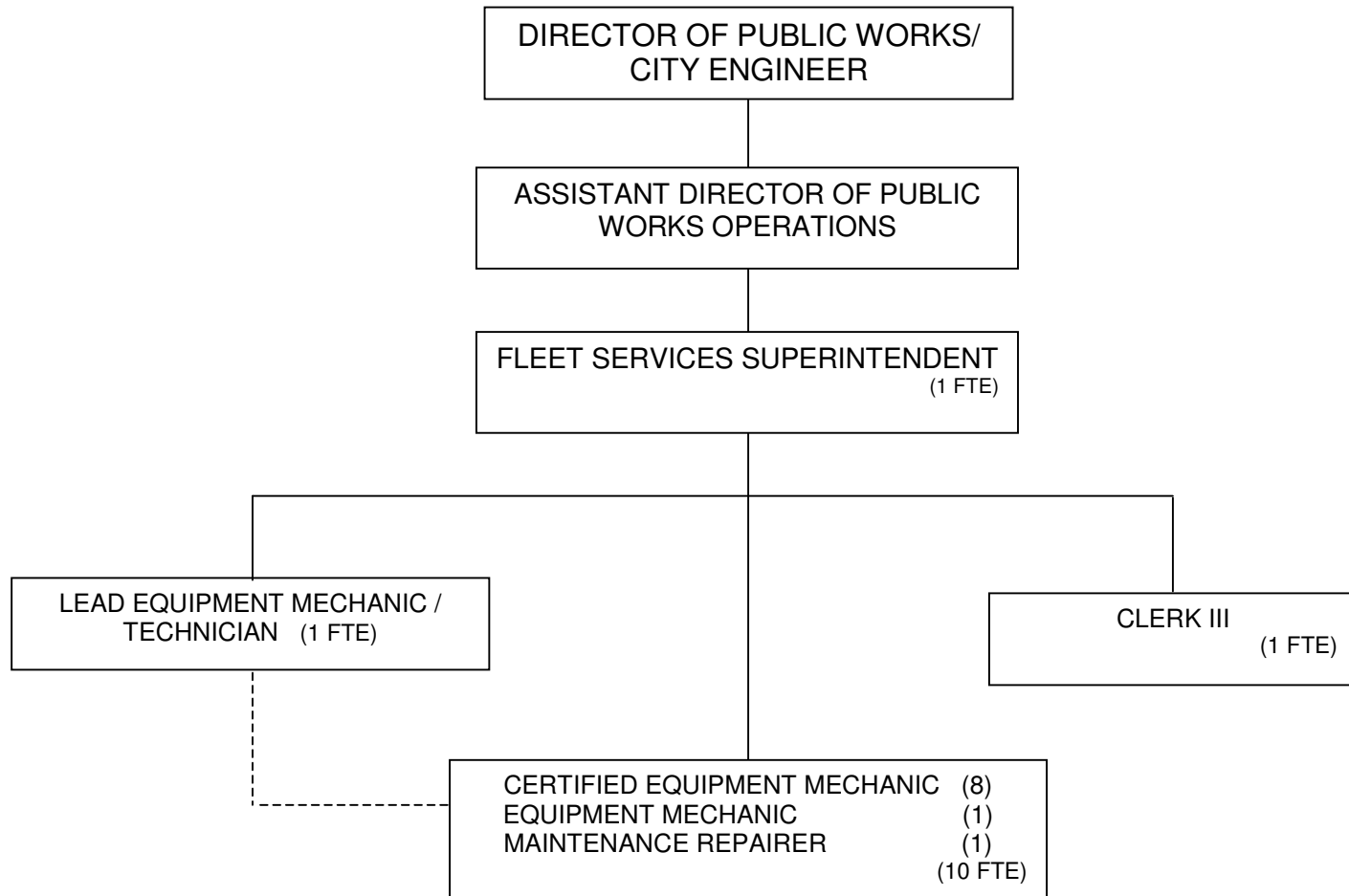
TOTAL POSITIONS: 5 (4.25 FTE)

**ORGANIZATIONAL CHART
PUBLIC WORKS / ENGINEERING
BUILDING / INVENTORY AND ELECTRICAL SERVICES**



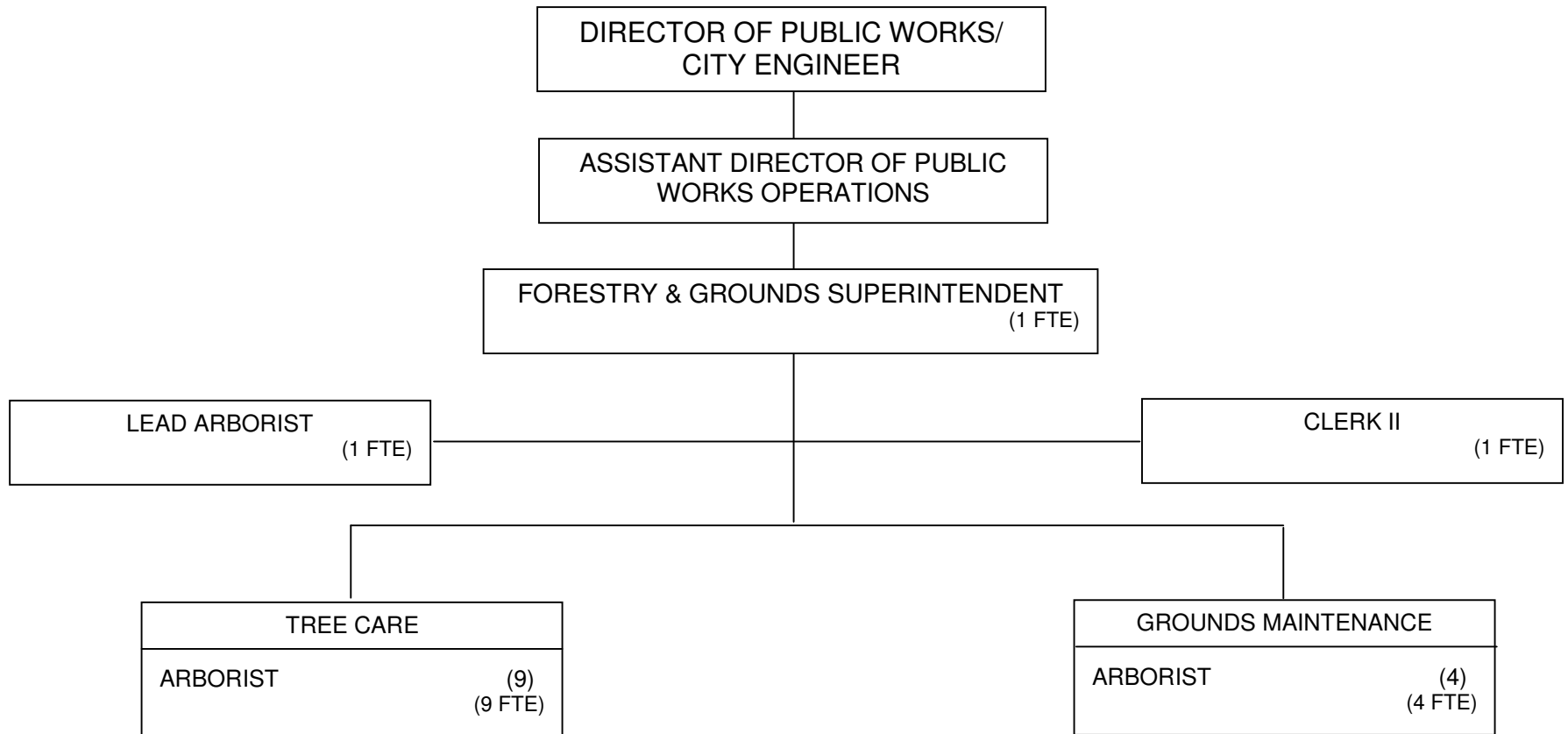
TOTAL POSITIONS: 33 (33 FTE)

**ORGANIZATIONAL CHART
PUBLIC WORKS / ENGINEERING
FLEET SERVICES**



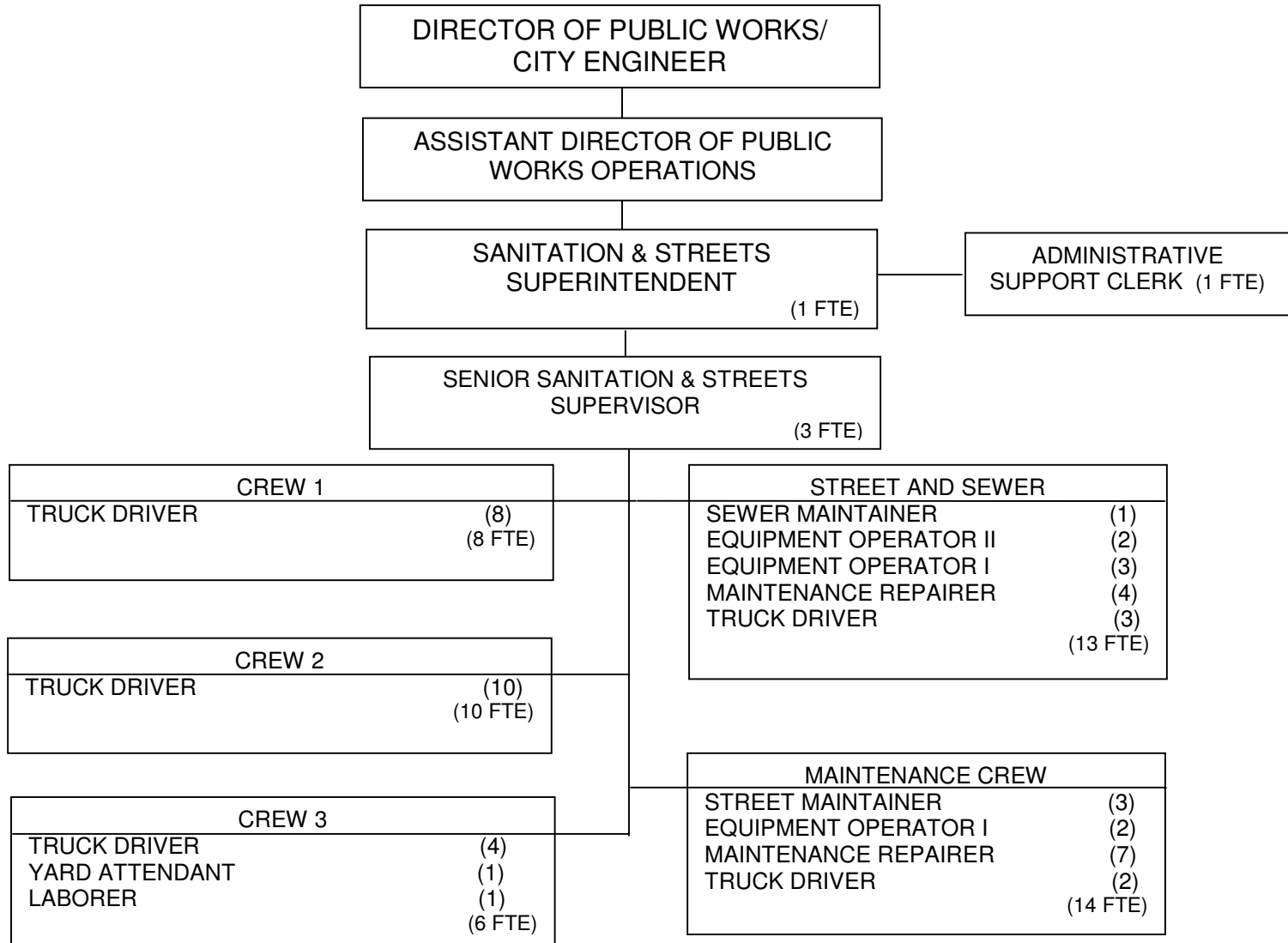
TOTAL POSITIONS: 13 (13 FTE)

**ORGANIZATIONAL CHART
PUBLIC WORKS / ENGINEERING
FORESTRY & GROUNDS**



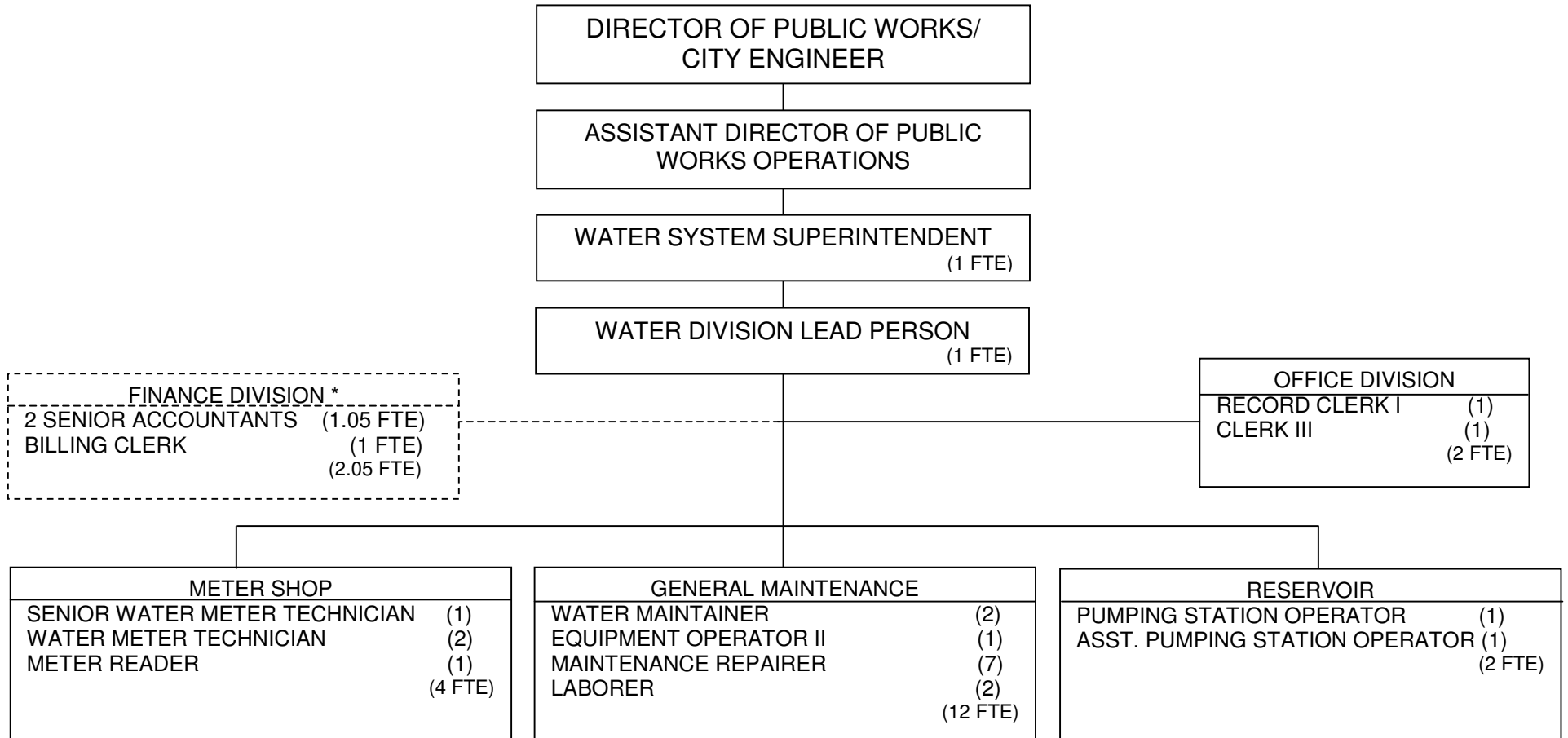
TOTAL POSITIONS: 16 (16 FTE)

**ORGANIZATIONAL CHART
PUBLIC WORKS / ENGINEERING
SANITATION & STREETS**



TOTAL POSITIONS: 56 (56 FTE)

**ORGANIZATIONAL CHART
PUBLIC WORKS / ENGINEERING
WATER**

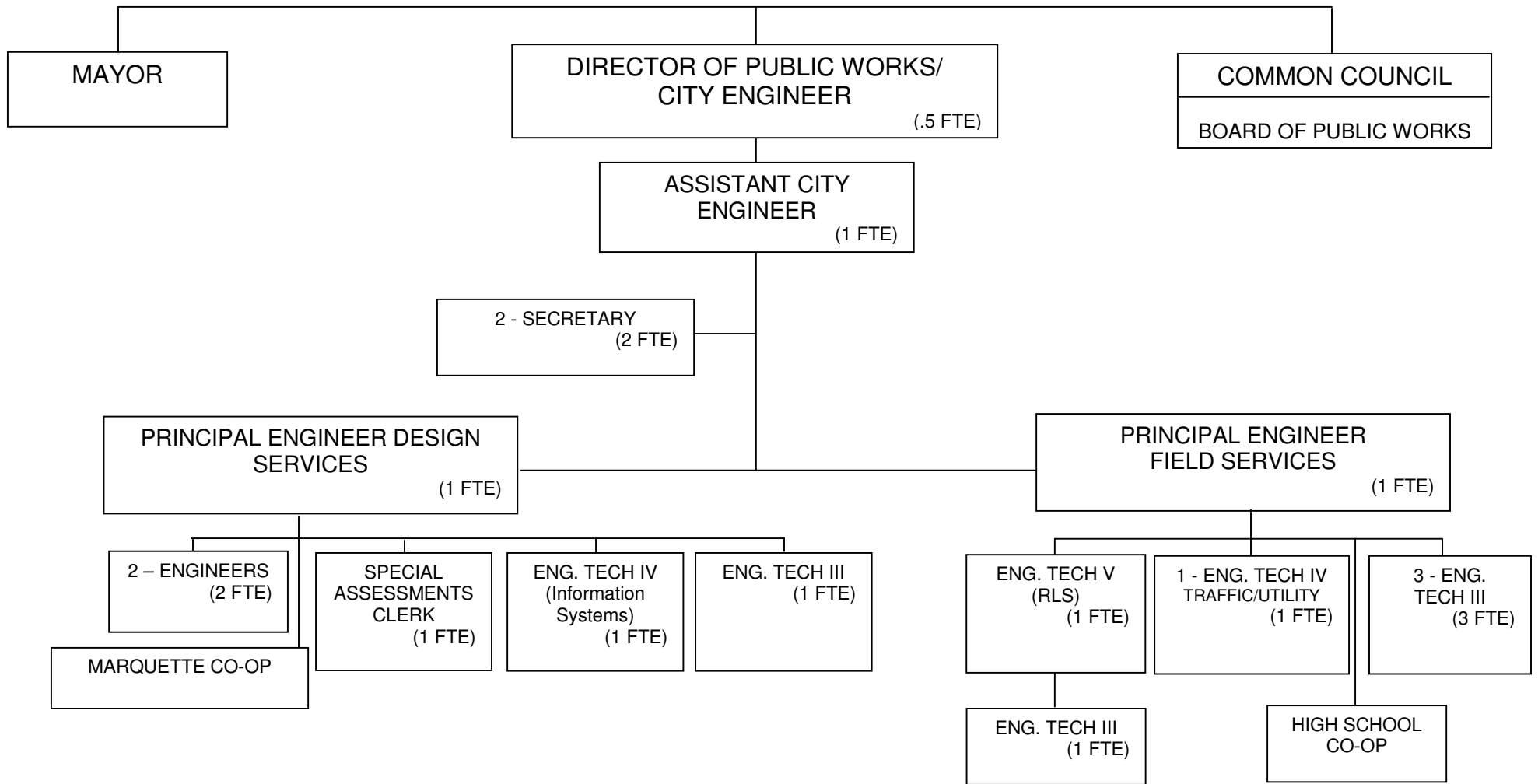


*THESE POSITIONS ARE IN THE PUBLIC WORKS WATER DIVISION BUDGET BUT ARE UNDER THE DIRECTION OF THE FINANCE DIVISION.

NOTE: Other personnel working in support of the Water Utility (A&F, Treasurer, PW, IT) are also funded by the Water Utility, but are not included on this chart. Further, some of the positions reflected above on this chart also perform work funded by other Utility Budgets (Sanitary, Storm, etc.)

TOTAL POSITIONS: 25 (24.05 FTE)

**ORGANIZATIONAL CHART
PUBLIC WORKS/ENGINEERING
ENGINEERING**



TOTAL POSITIONS: 17 (16.5 FTE)