

City of West Allis



Organizational Chart

2018

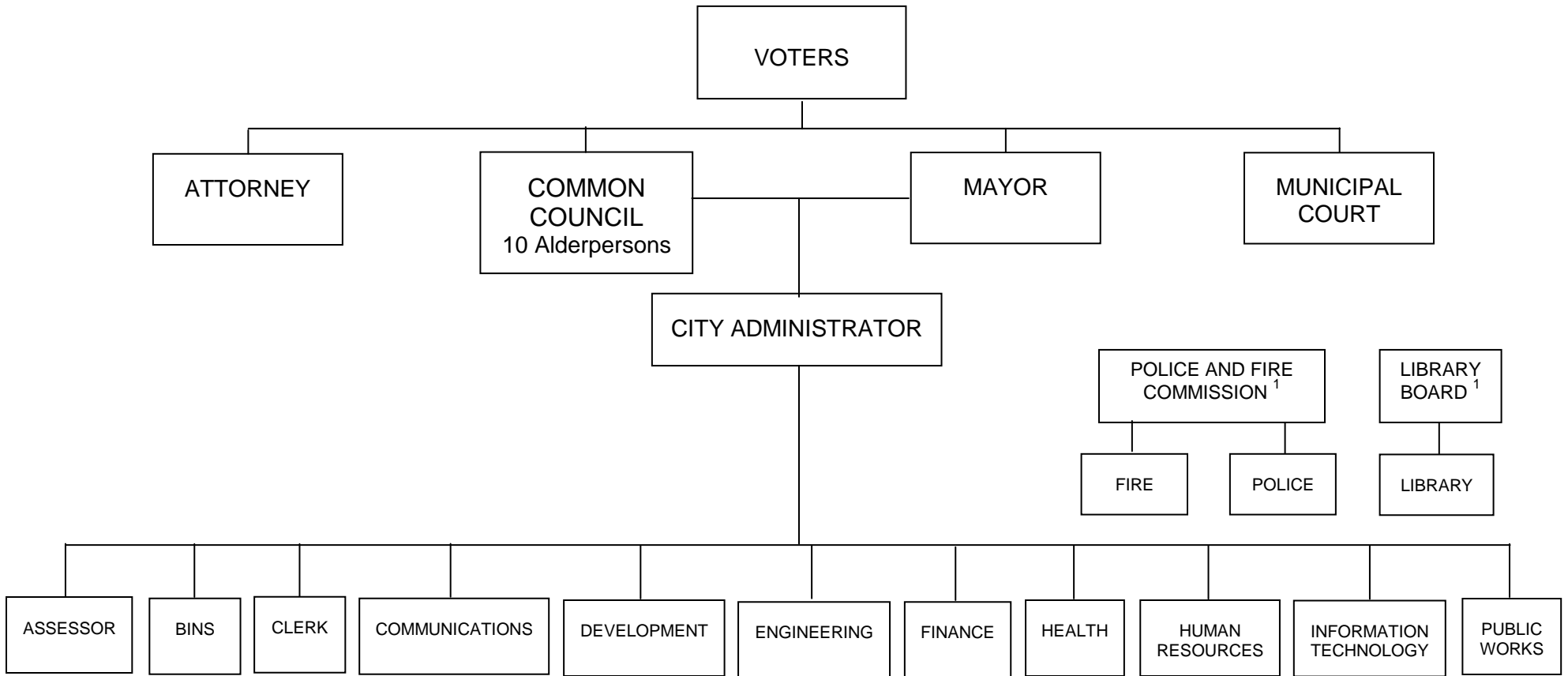
ORGANIZATIONAL CHARTS

April 1, 2018

	<u>Page</u>
City of West Allis.....	1
Council Policy Committees.....	2
Advisory Committees.....	3
Mayor	4
Assessor.....	5
Attorney	6
Building Inspections & Neighborhood Services	7
City Administrator	8
Clerk.....	9
Communications.....	10
Development	11
Community Development	12
Planning & Zoning	13
Engineering	14
Finance.....	15
Fire	16
Health.....	17
Health Administrative Services	18
Community Health Services	19
Environmental Health & Consumer Protection	20
Interdisciplinary Health Services.....	21
Senior Center	22
WIC Program	23
Human Resources.....	24
Information Technology	25
Library	26

	<u>Page</u>
Municipal Court.....	27
Police.....	28
Public Works / Engineering.....	29
Administrative Office.....	30
Building / Inventory & Electrical Services.....	31
Fleet Services.....	32
Forestry & Grounds	33
Sanitation & Streets.....	34
Water	35

**ORGANIZATIONAL CHART
CITY OF WEST ALLIS**

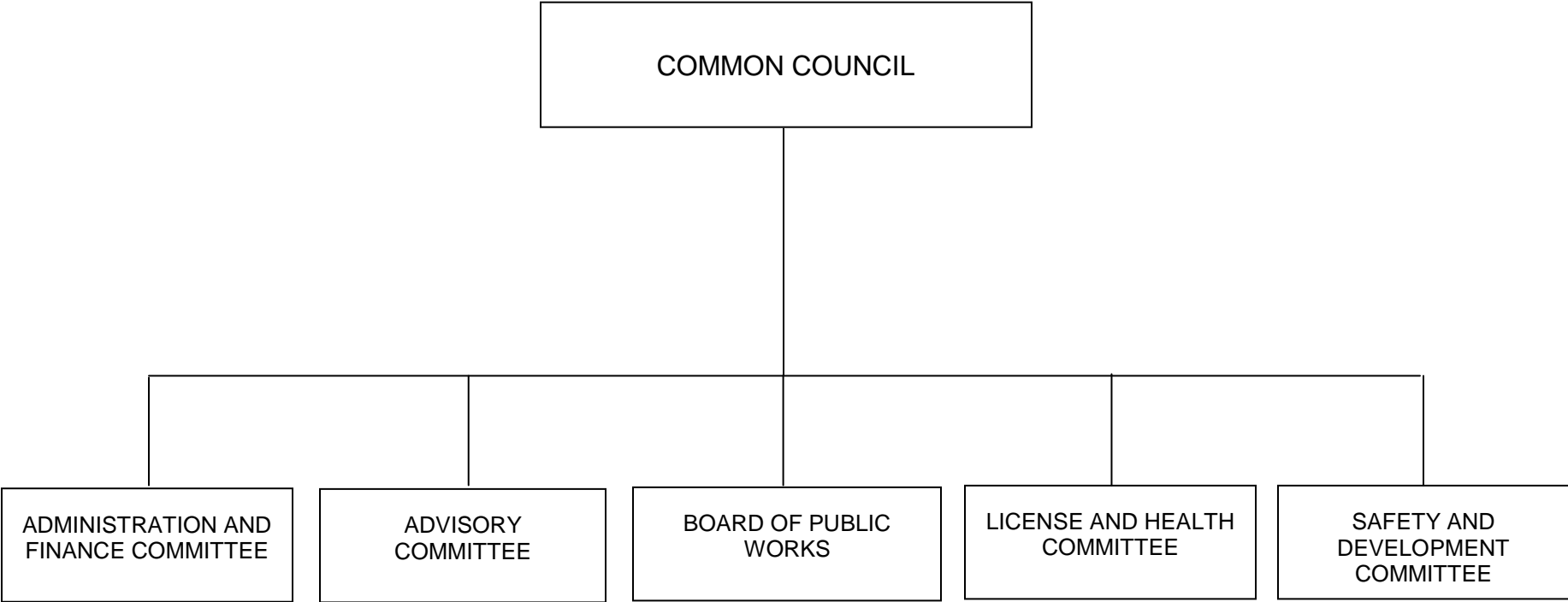


¹ Appointed by the Mayor and confirmed by the Common Council, with policy responsibility.

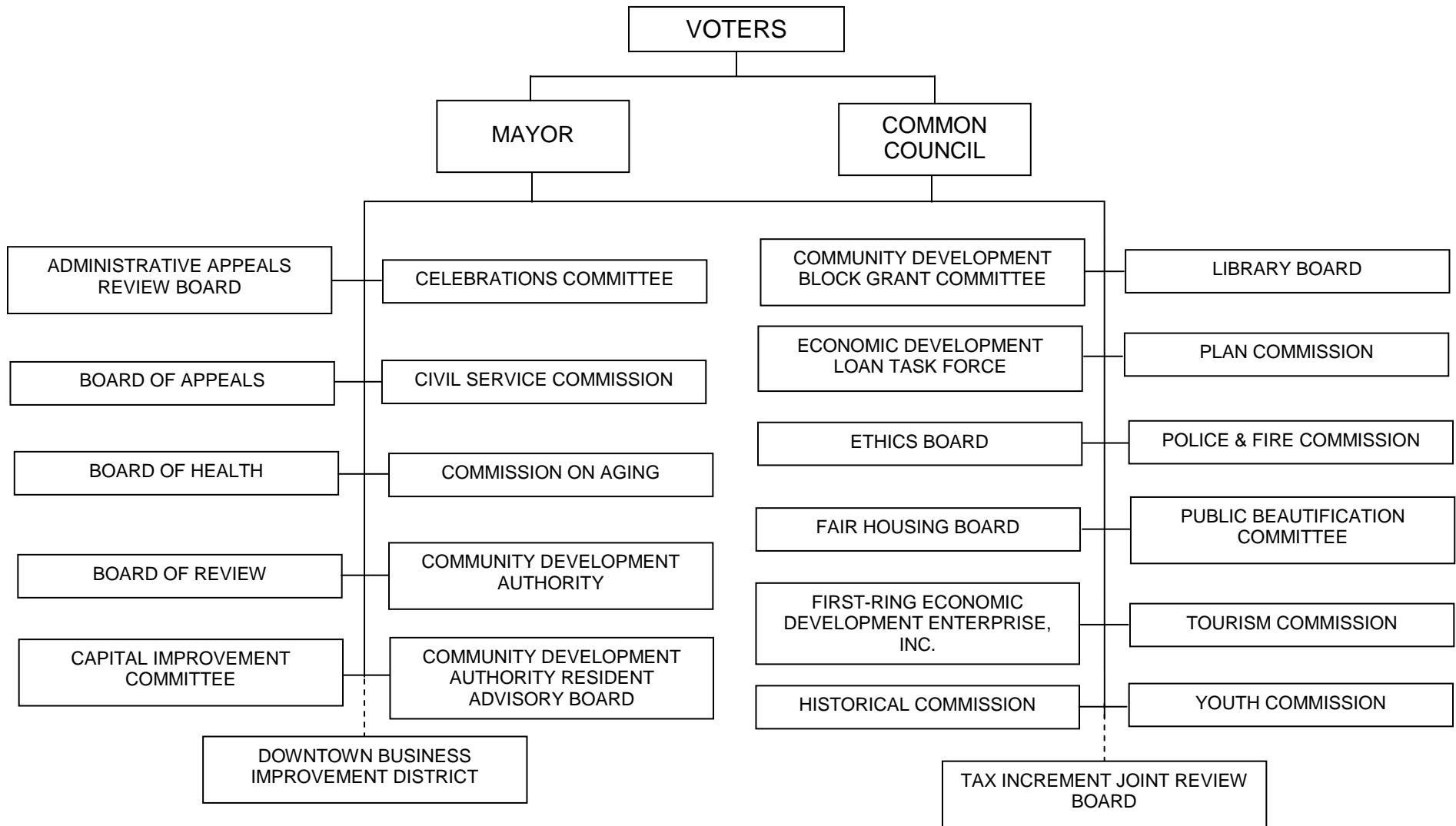
TOTAL 2018 FTE POSITIONS: 747.075

General Fund Benefitted FTE: 521.600
 Other Funding Sources Benefitted FTE: 54.675
 General Fund Misc. PT Non-Benefitted FTE: 170.800

**ORGANIZATIONAL CHART
COUNCIL POLICY COMMITTEES**

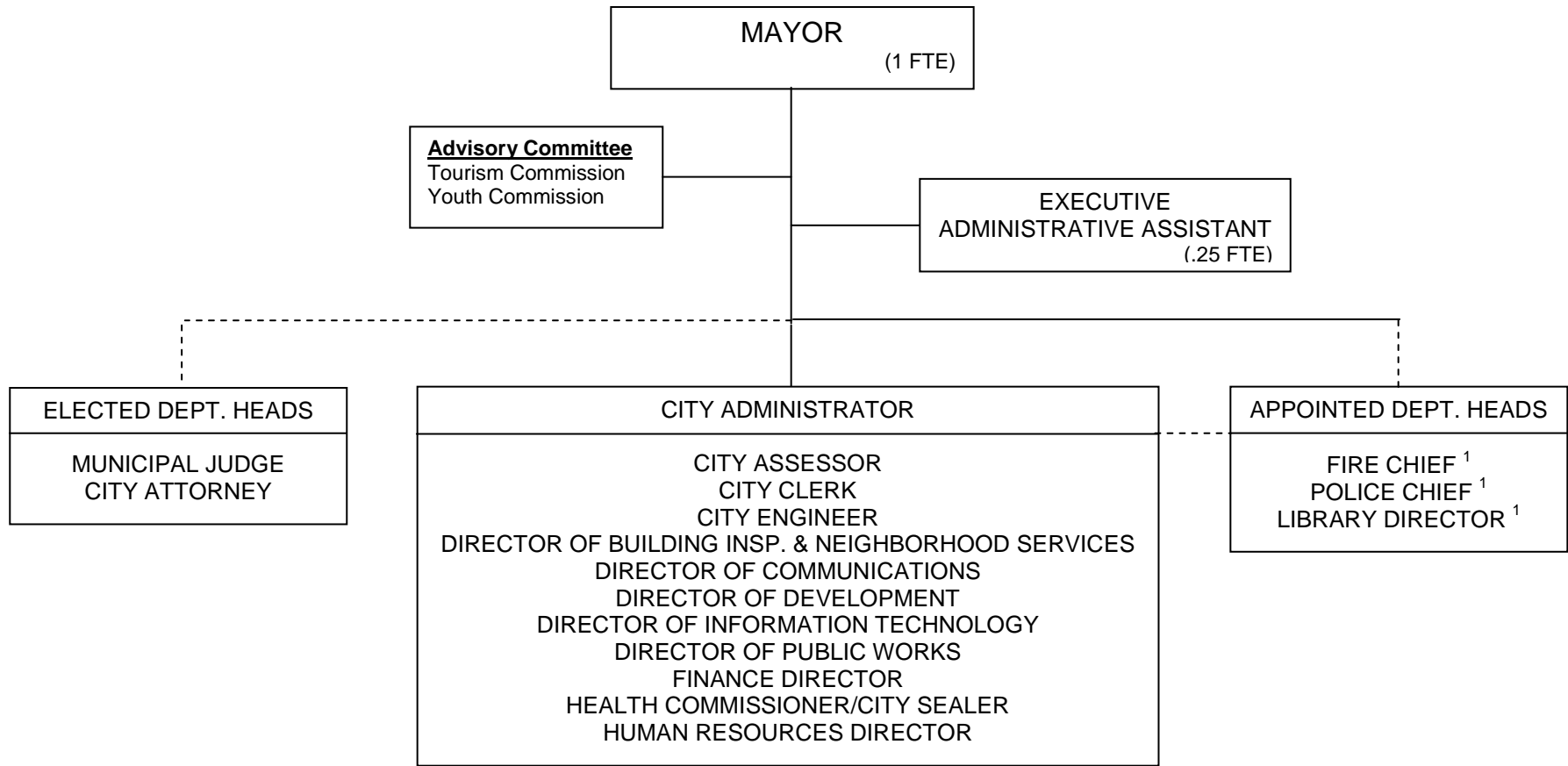


ORGANIZATIONAL CHART ADVISORY COMMITTEES



Advisory Committee members are appointed by the Mayor and confirmed by the Common Council.

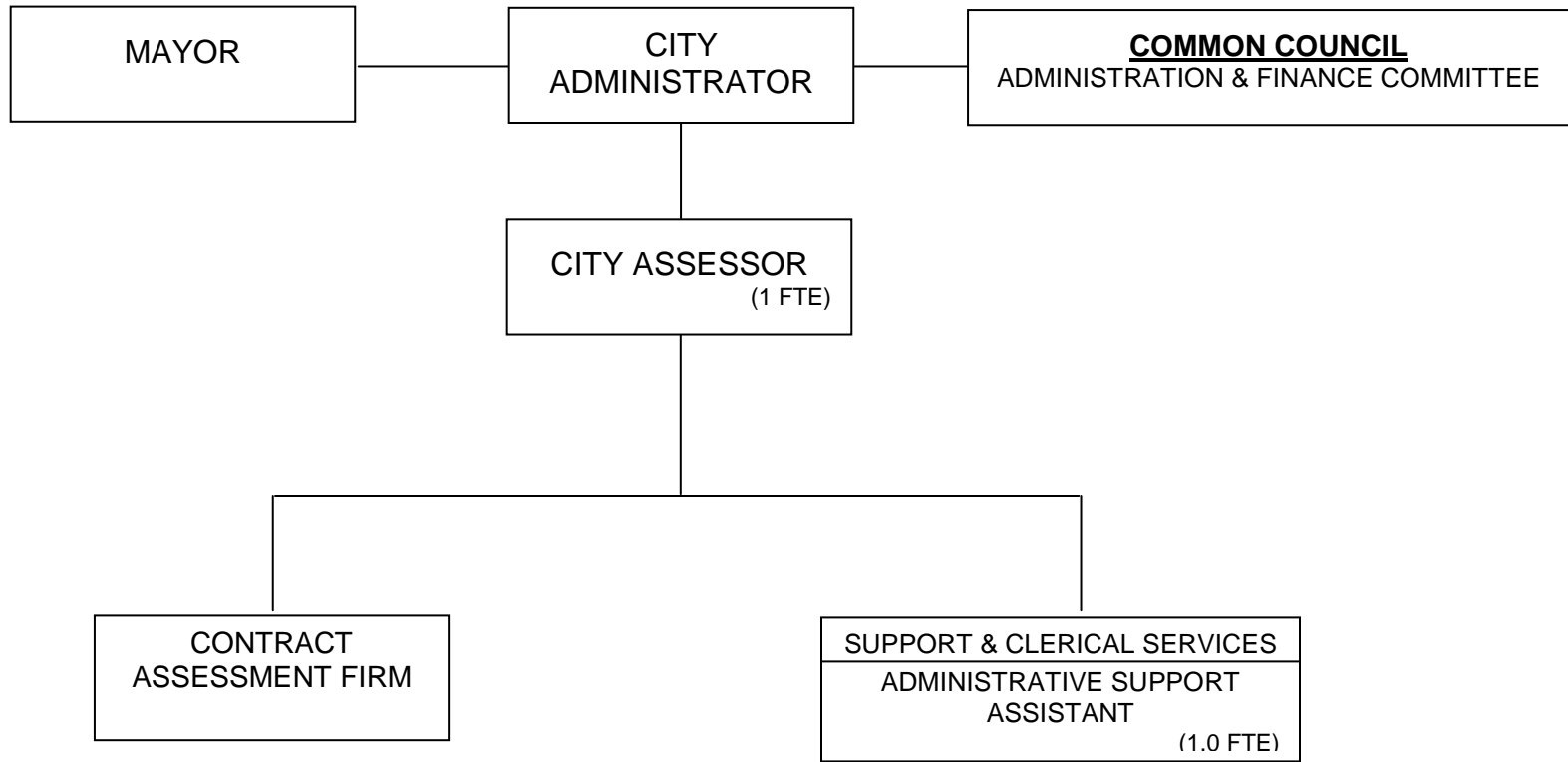
**ORGANIZATIONAL CHART
MAYOR**



¹ Reports directly to Police & Fire Commission and Library Board respectively.

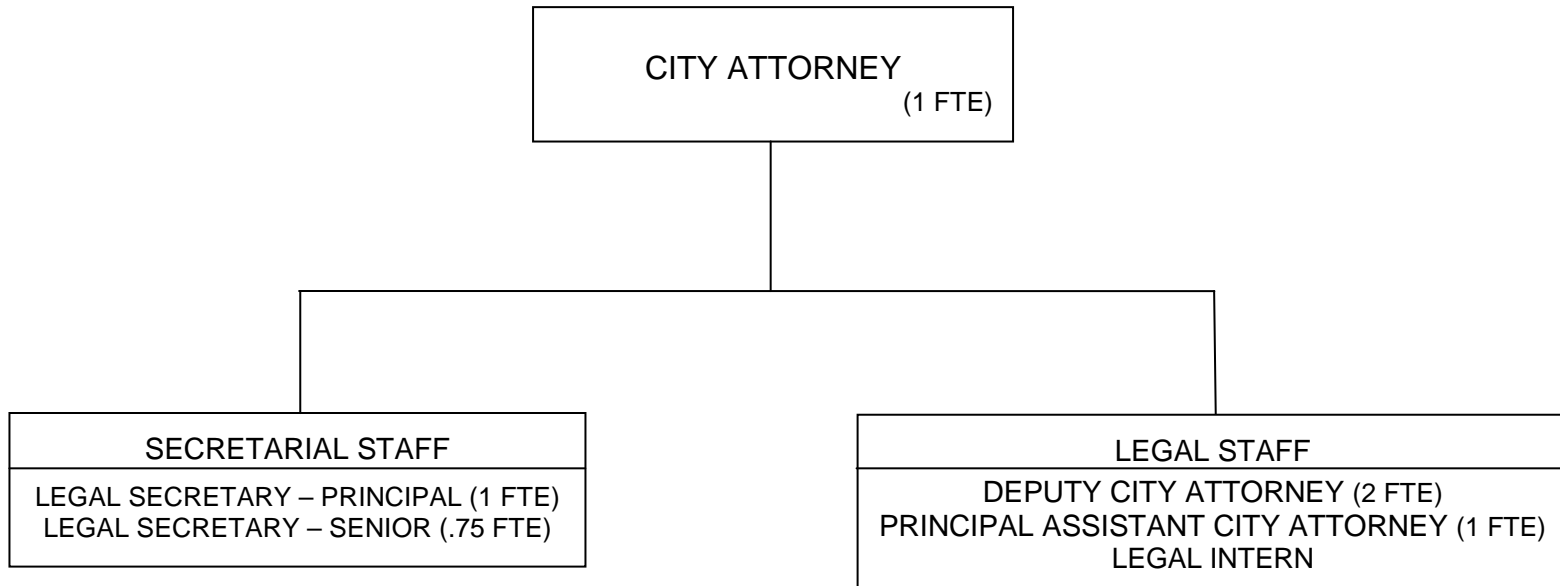
CITY FUNDED FTEs: 1.25

**ORGANIZATIONAL CHART
ASSESSOR**



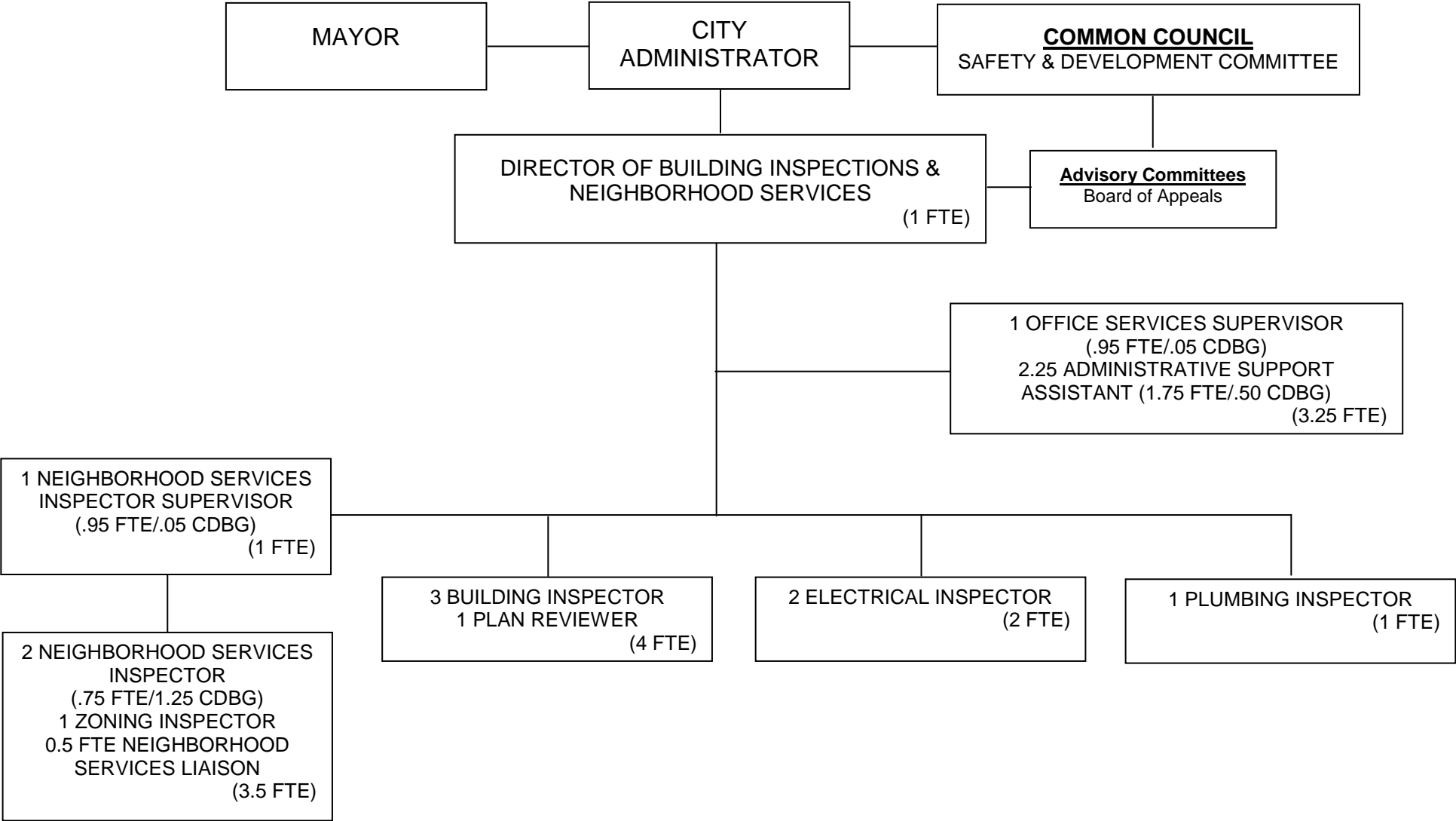
CITY FUNDED FTEs: 2.0

**ORGANIZATIONAL CHART
ATTORNEY**



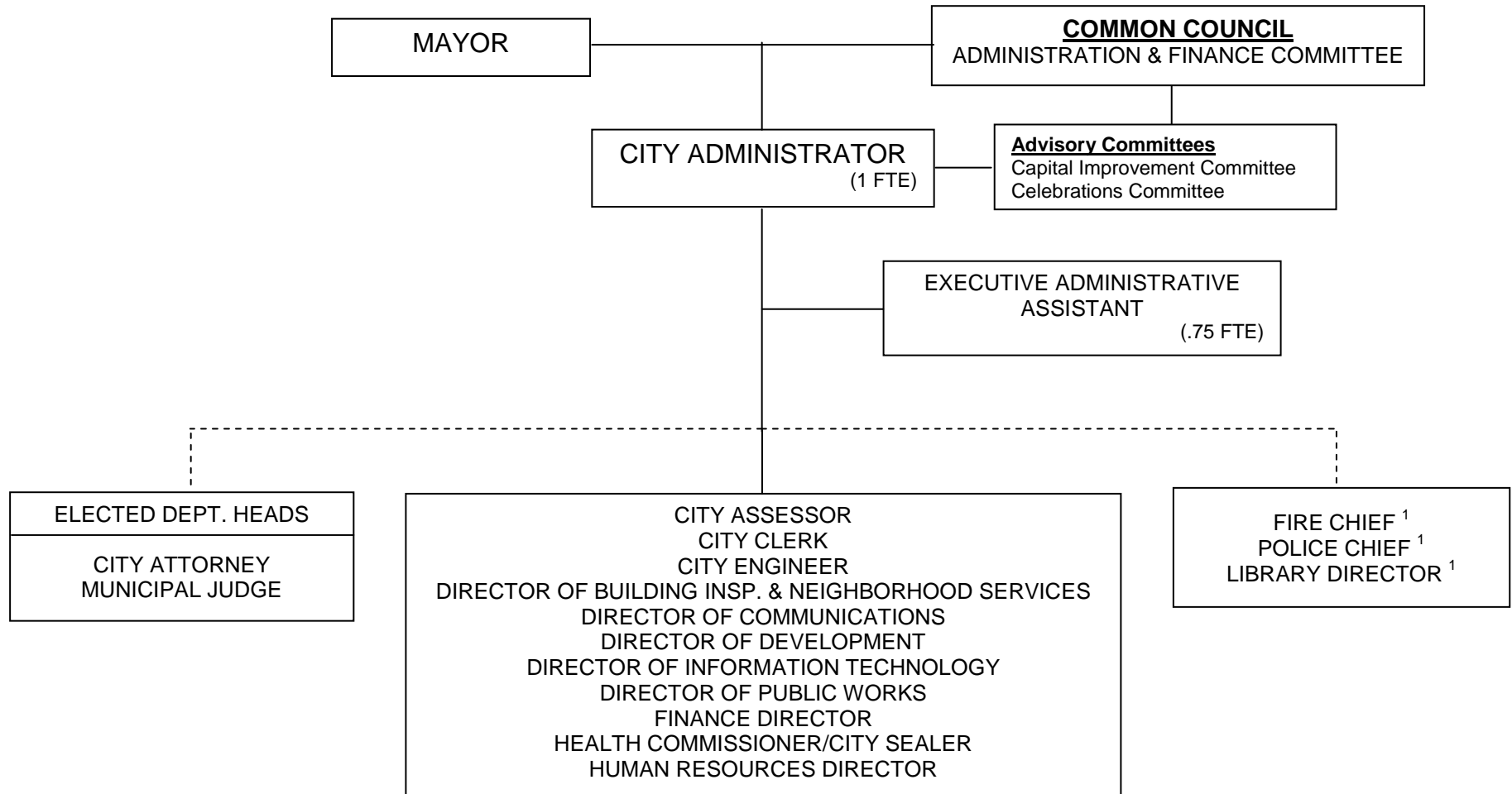
CITY FUNDED FTEs: 5.75

**ORGANIZATIONAL CHART
BUILDING INSPECTIONS AND NEIGHBORHOOD SERVICES**



CITY FUNDED FTEs: 13.90
OTHER FUNDING SOURCES FTEs: 1.85

**ORGANIZATIONAL CHART
CITY ADMINISTRATOR**

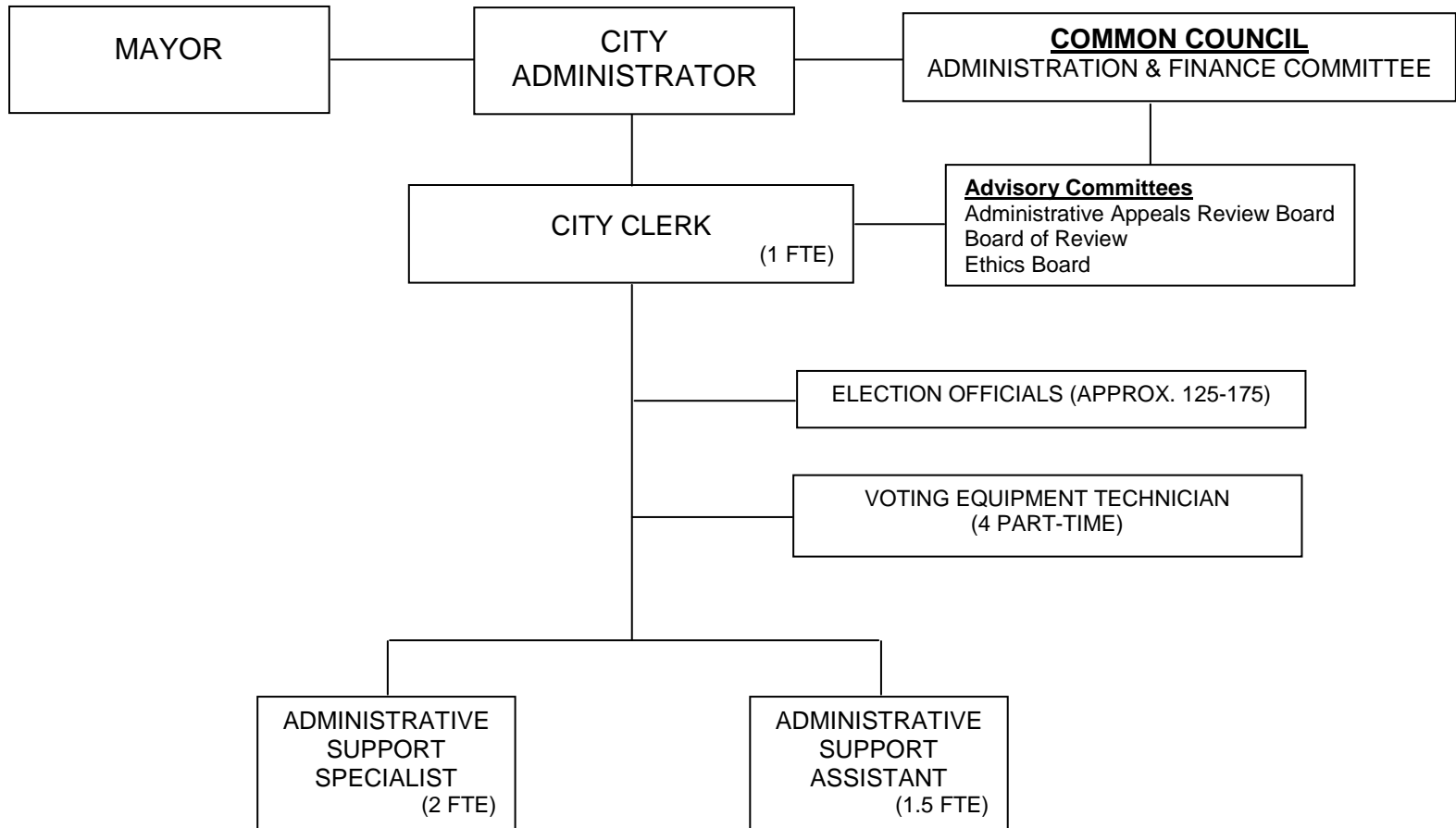


¹ Reports directly to Police & Fire Commission and Library Board respectively.

Note: Solid lines indicate lines of policy and program authority; dashed lines indicate lines of administrative and financial authority.

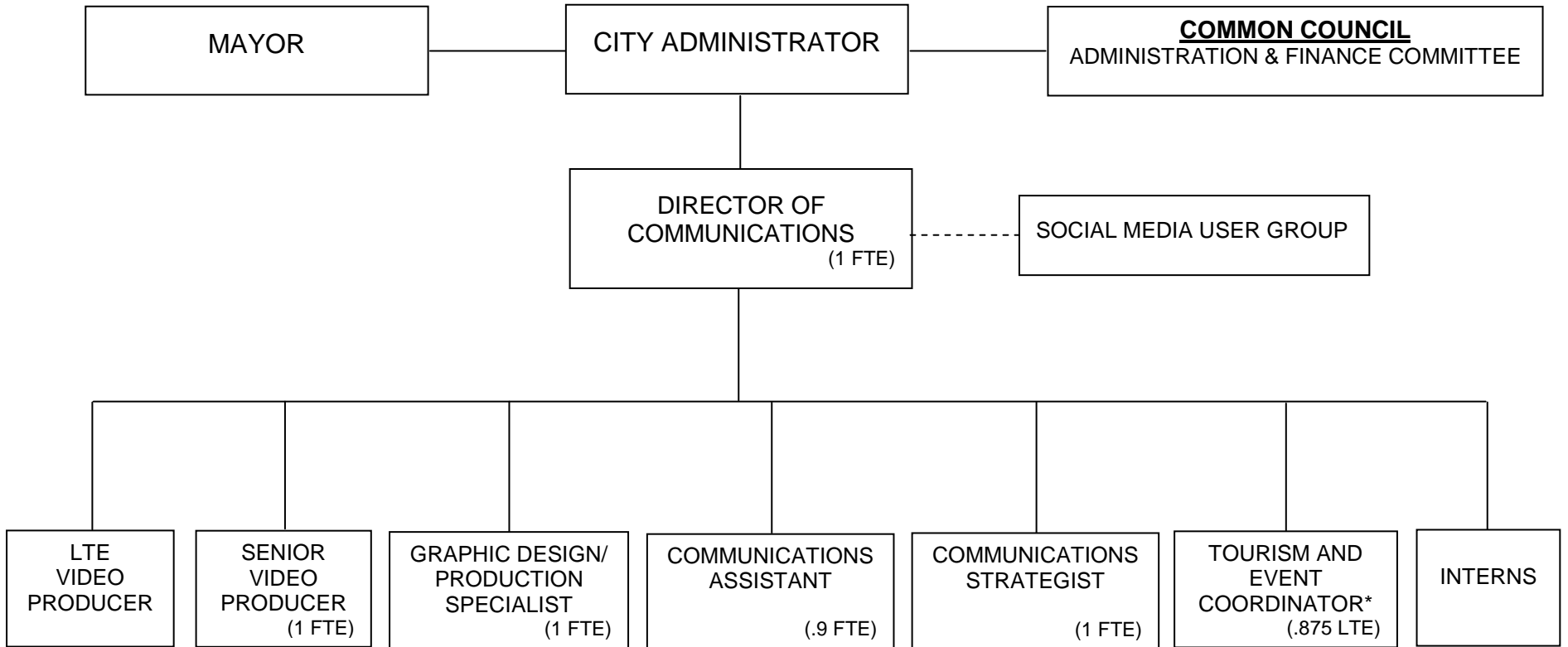
CITY FUNDED FTEs: 1.75

**ORGANIZATIONAL CHART
CLERK**



CITY FUNDED FTEs: 4.5

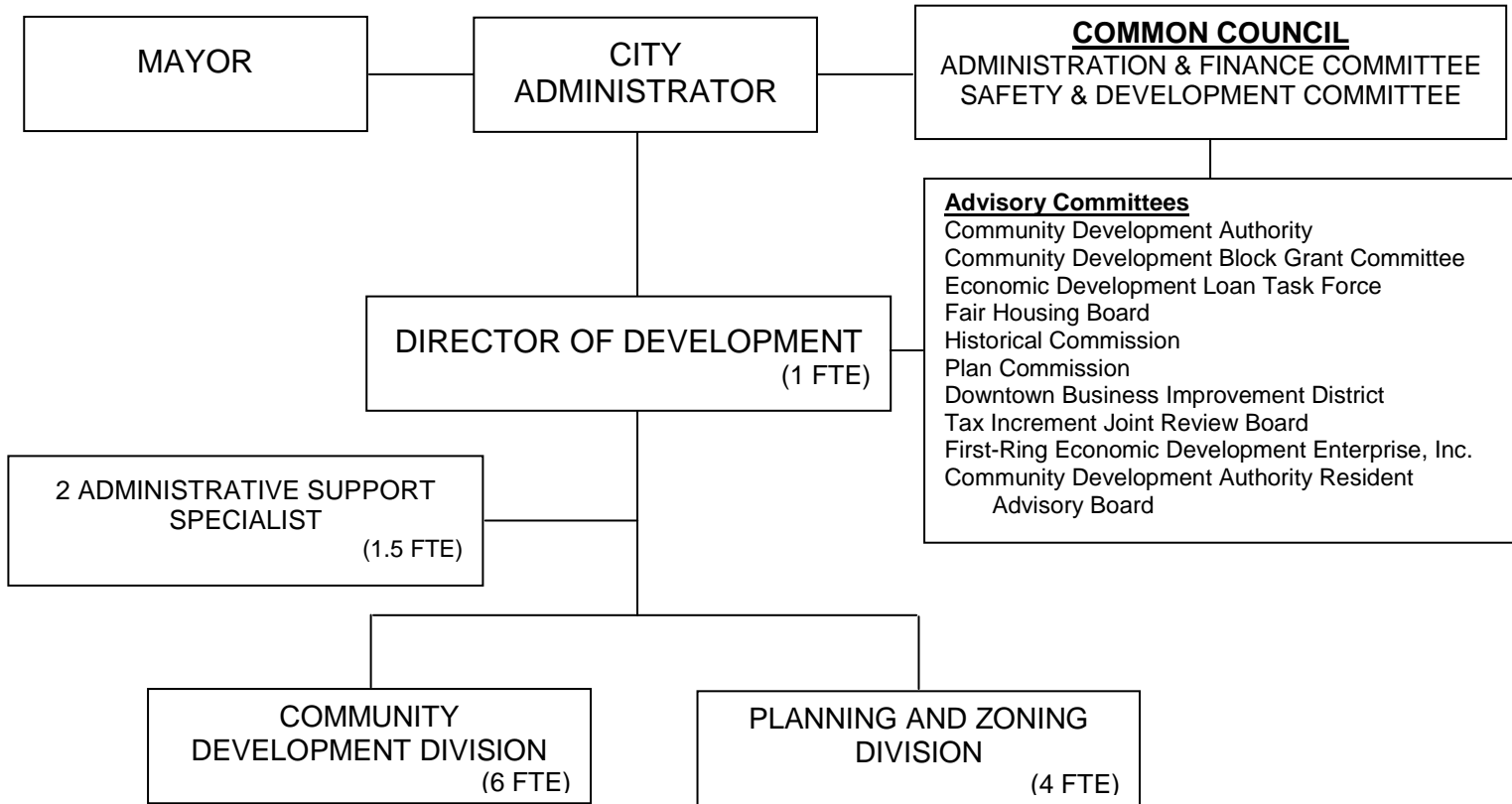
ORGANIZATIONAL CHART COMMUNICATIONS



CITY FUNDED FTEs: 0.00
OTHER FUNDING SOURCES FTEs: 5.775

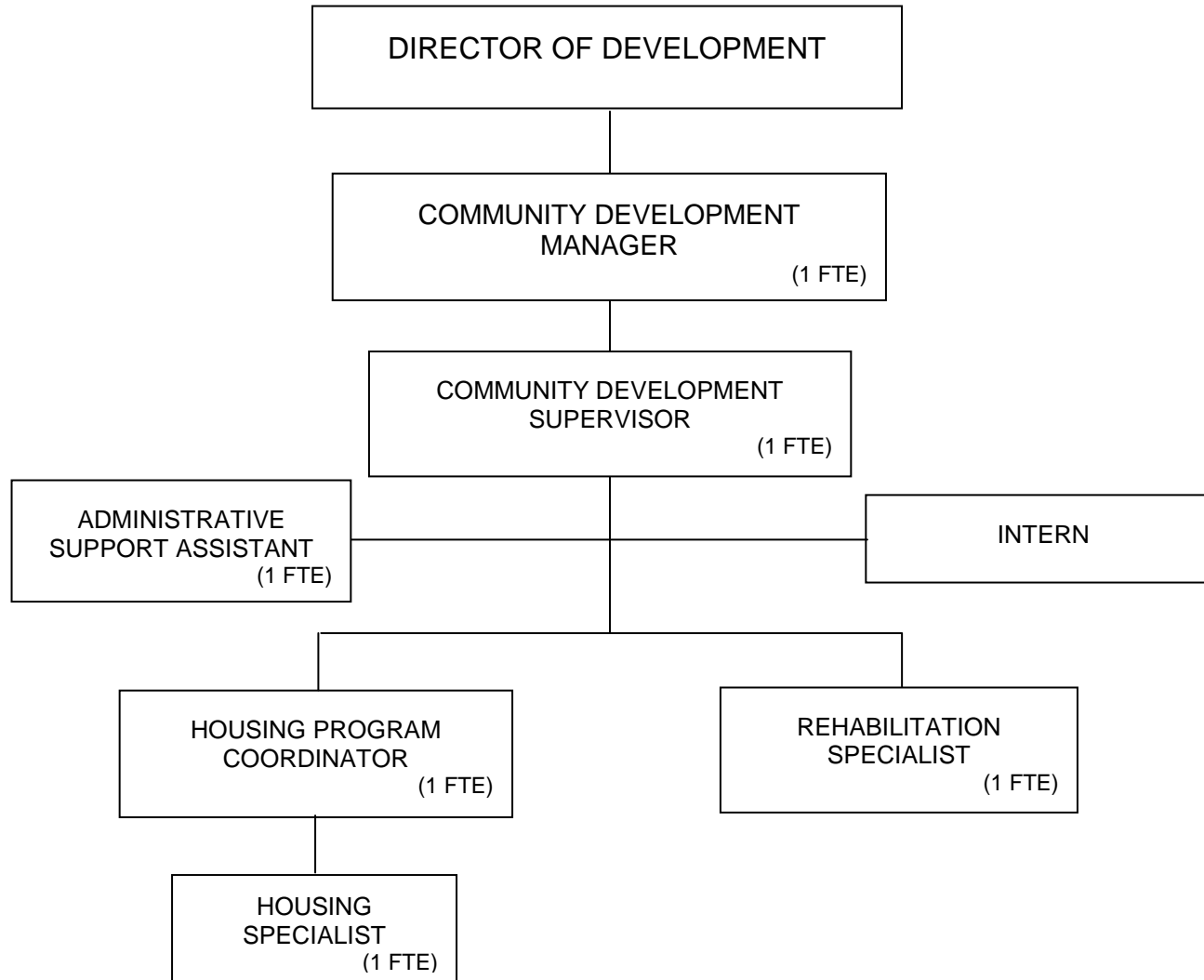
* 2018 New Initiative

**ORGANIZATIONAL CHART
DEVELOPMENT**



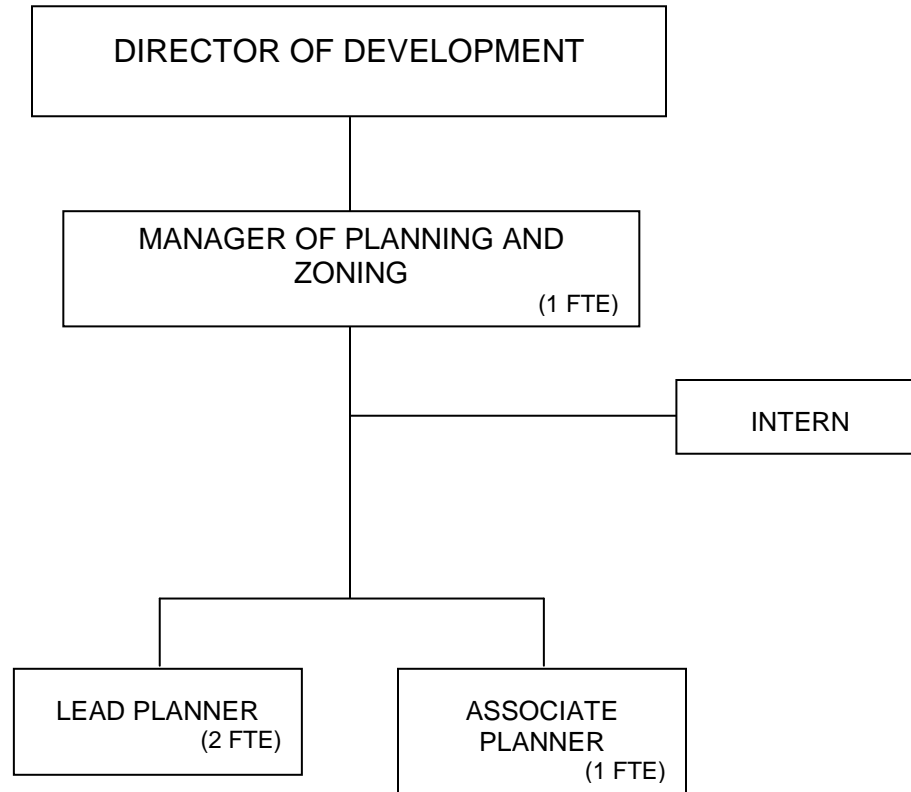
CITY FUNDED FTEs: 4.93
OTHER FUNDING SOURCES FTEs: 7.57

**ORGANIZATIONAL CHART
COMMUNITY DEVELOPMENT**

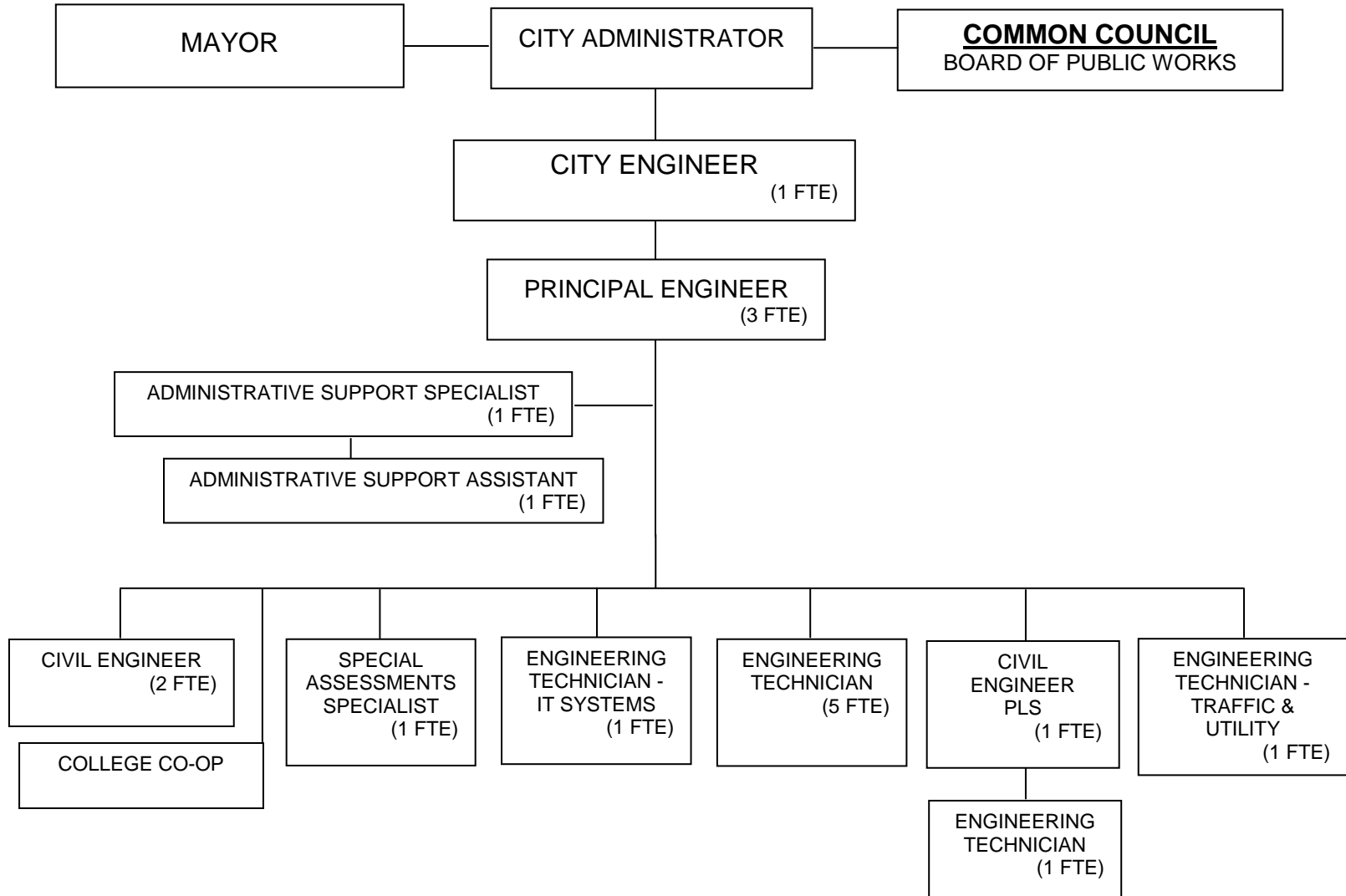


NOTE: Other personnel working in support of the Community Development Division are not included in this chart, however are funded by the Community Development Division (e.g., Accounting Specialist, Finance Department: 0.95).

**ORGANIZATIONAL CHART
PLANNING AND ZONING**

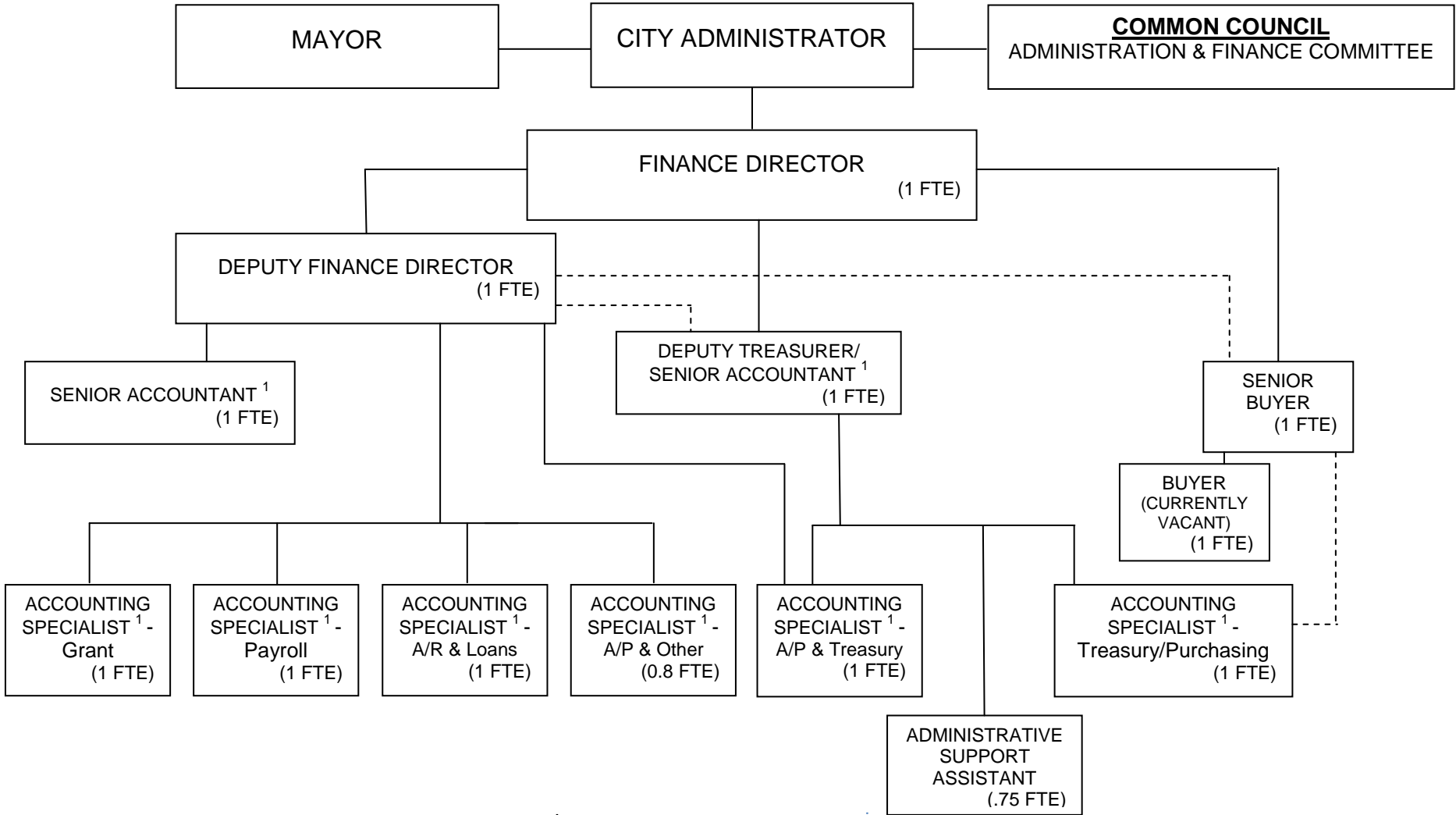


ORGANIZATIONAL CHART ENGINEERING



CITY FUNDED FTEs: 18.00

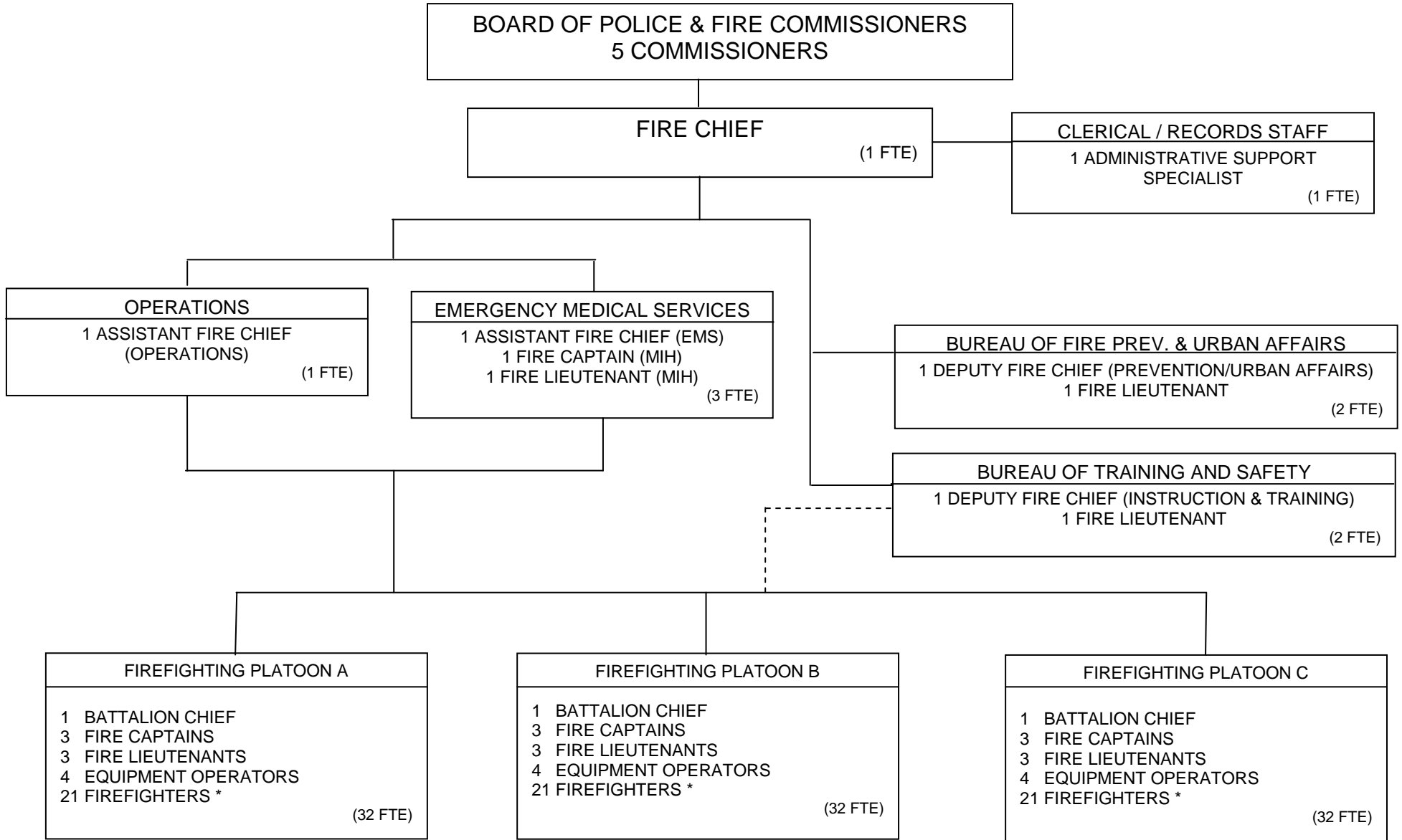
**ORGANIZATIONAL CHART
FINANCE DEPARTMENT**



¹ Positions supported by various funding sources (e.g., various grants and utility funds; water, sewer, storm, solid waste; fund portions of the noted positions).

CITY FUNDED FTEs: 8.82
GRANTS FTEs: .90
UTILITY FTEs: 2.83

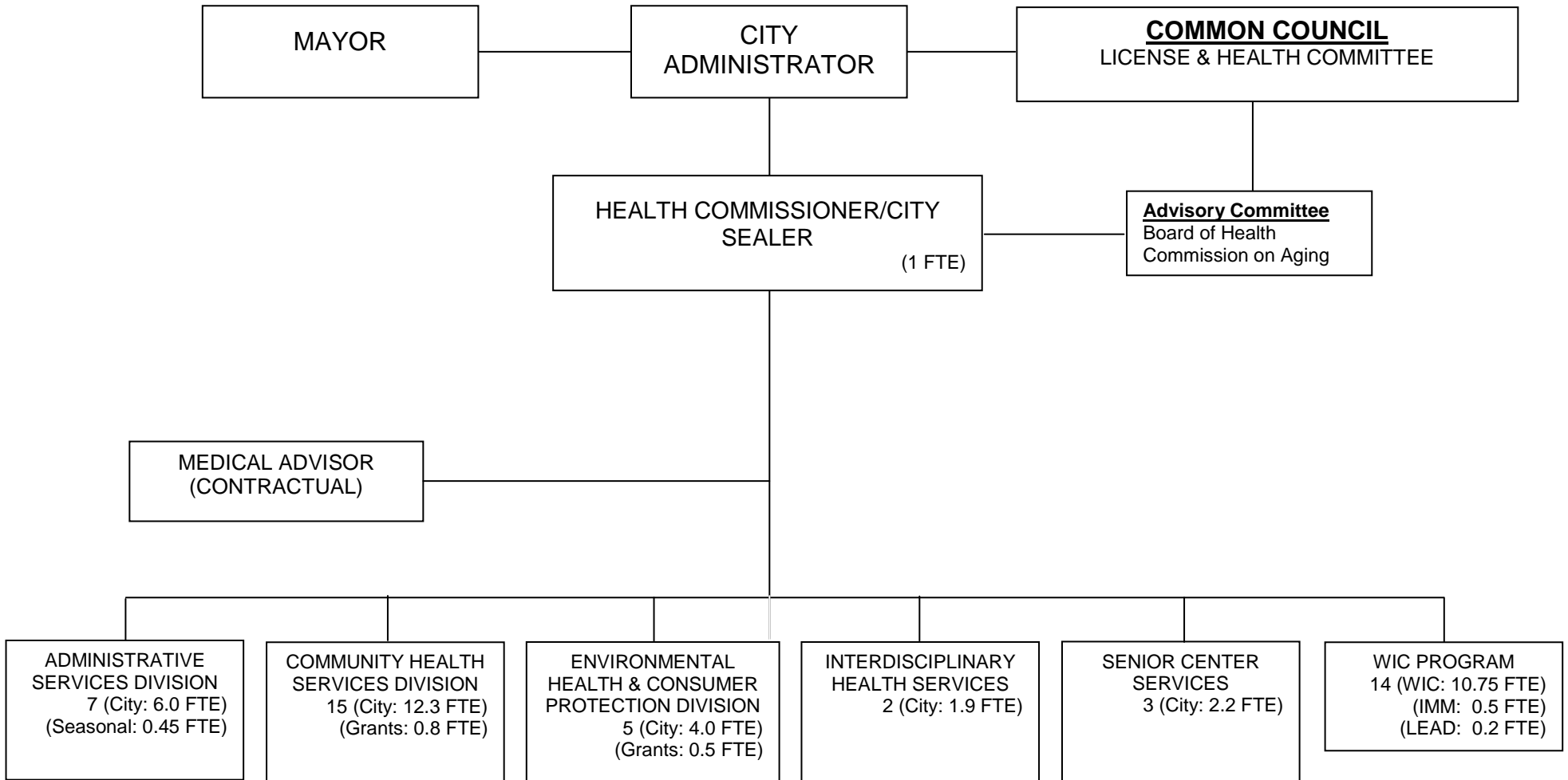
ORGANIZATIONAL CHART FIRE



* Includes 2 Firefighter Inspectors

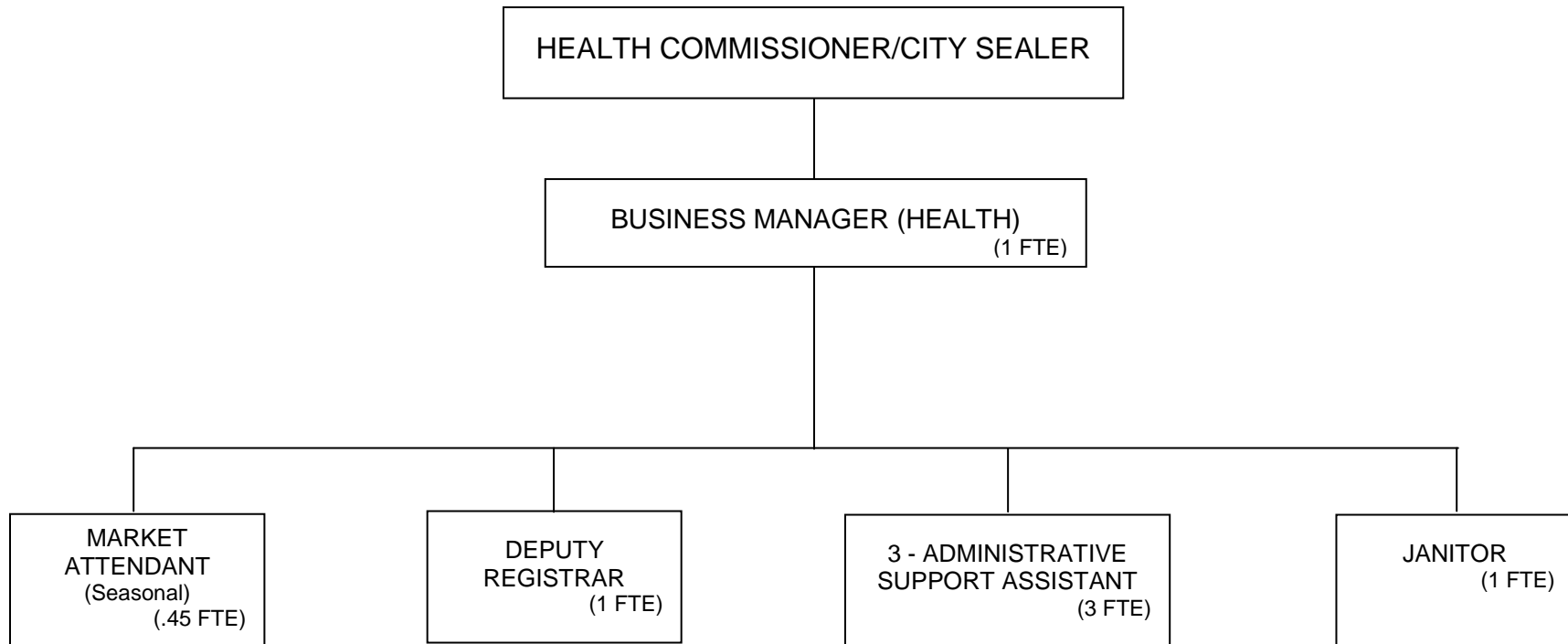
CITY FUNDED FTEs: 106

**ORGANIZATIONAL CHART
HEALTH**

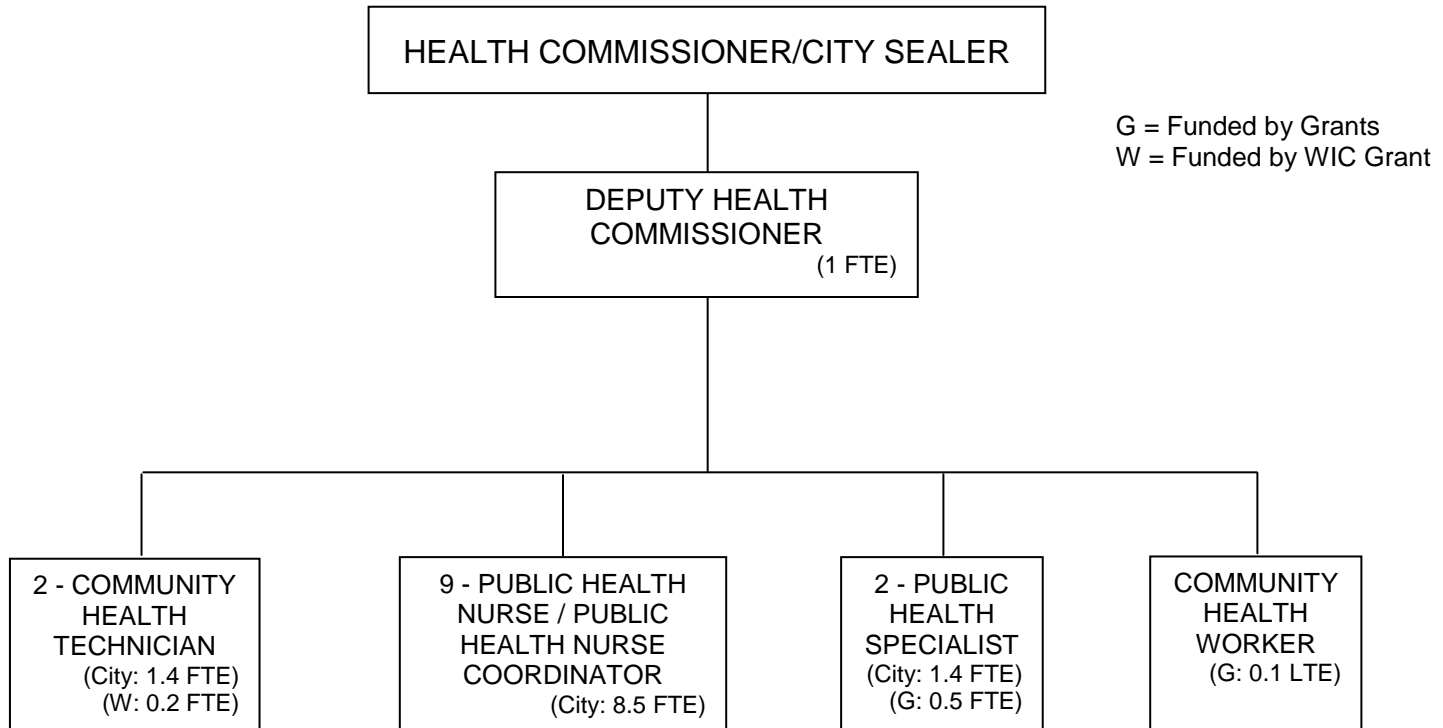


TOTAL POSITIONS: 47 (40.6 FTEs)
CITY FUNDED FTEs: 27.40
GRANTS FTEs: 12.75
SEASONAL FTEs: 0.45

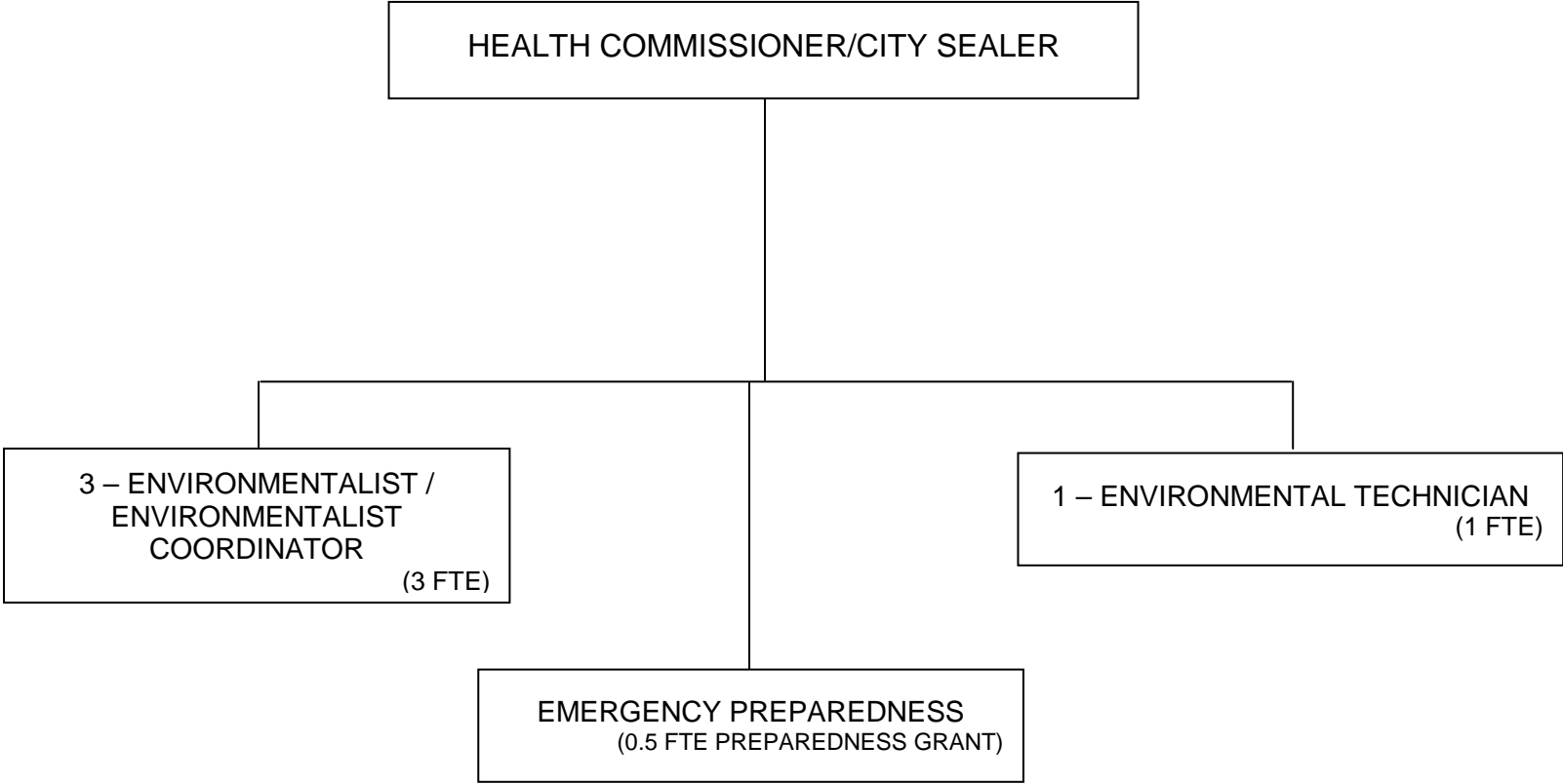
**ORGANIZATIONAL CHART
HEALTH
HEALTH ADMINISTRATIVE SERVICES**



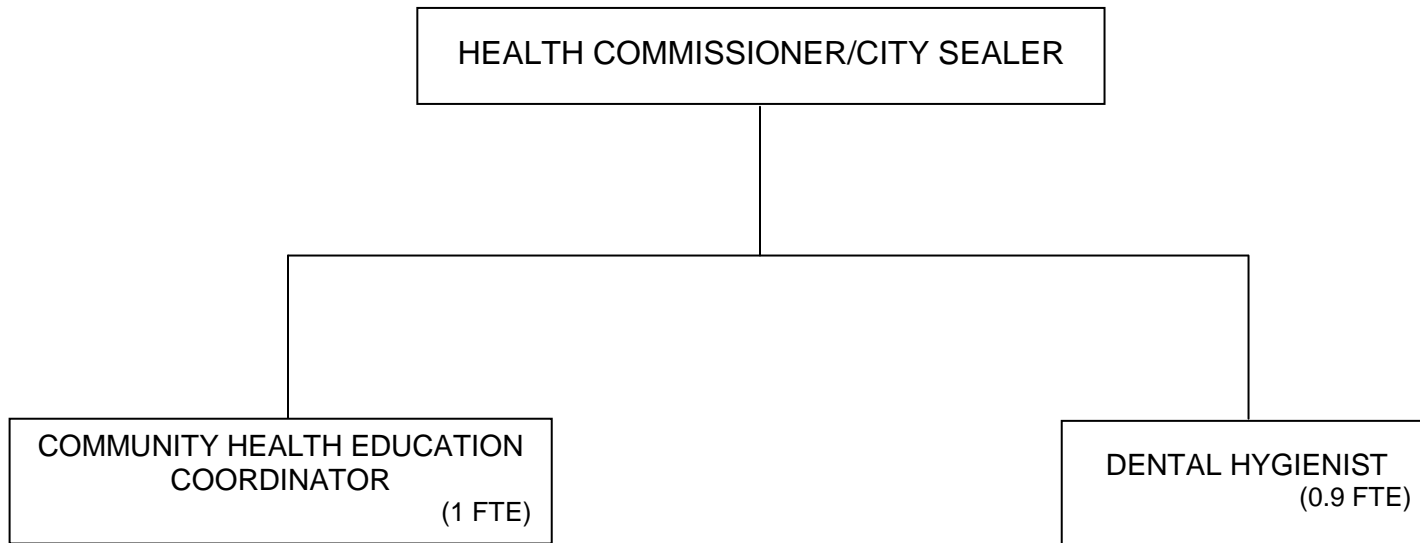
**ORGANIZATIONAL CHART
HEALTH
COMMUNITY HEALTH SERVICES**



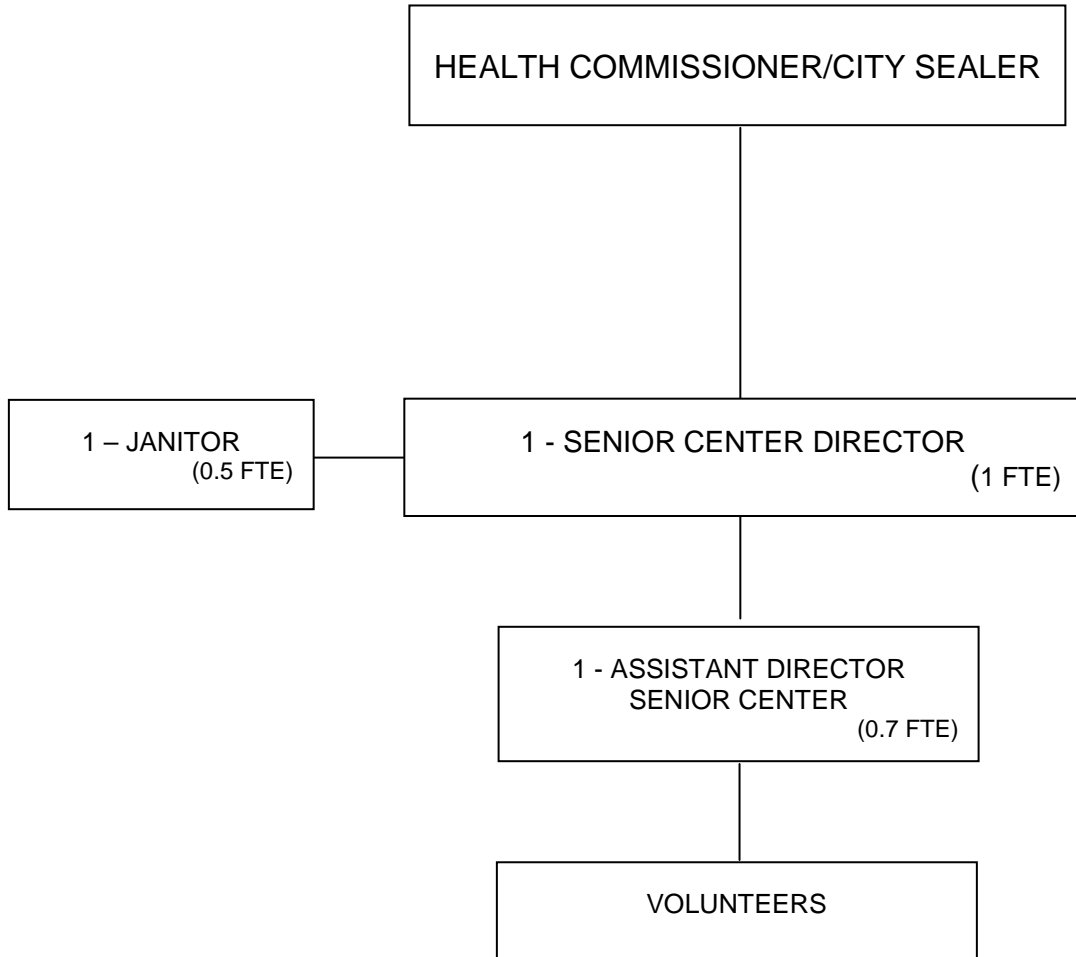
**ORGANIZATIONAL CHART
HEALTH
ENVIRONMENTAL HEALTH & CONSUMER PROTECTION**



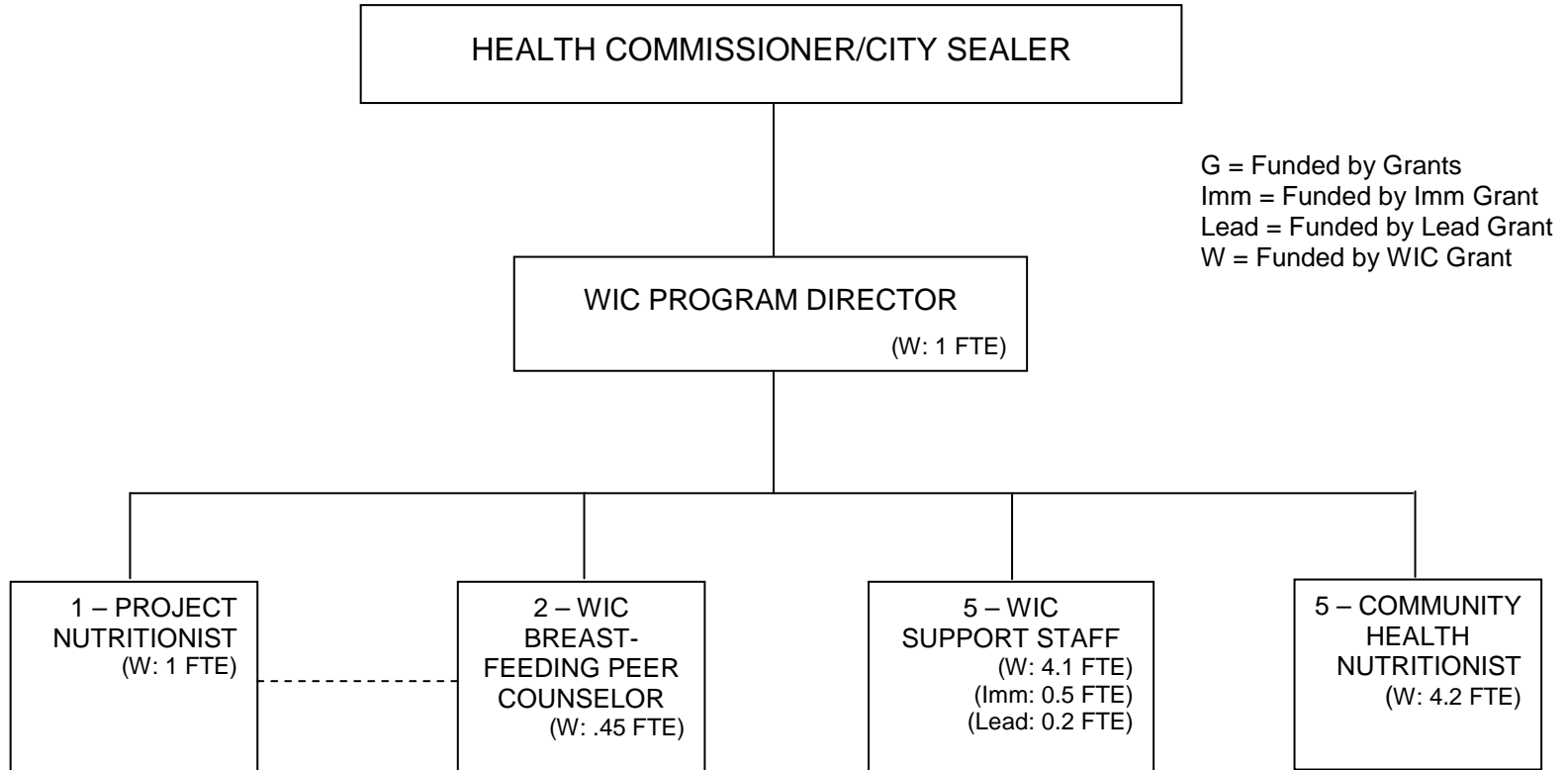
**ORGANIZATIONAL CHART
HEALTH
INTERDISCIPLINARY HEALTH SERVICES**



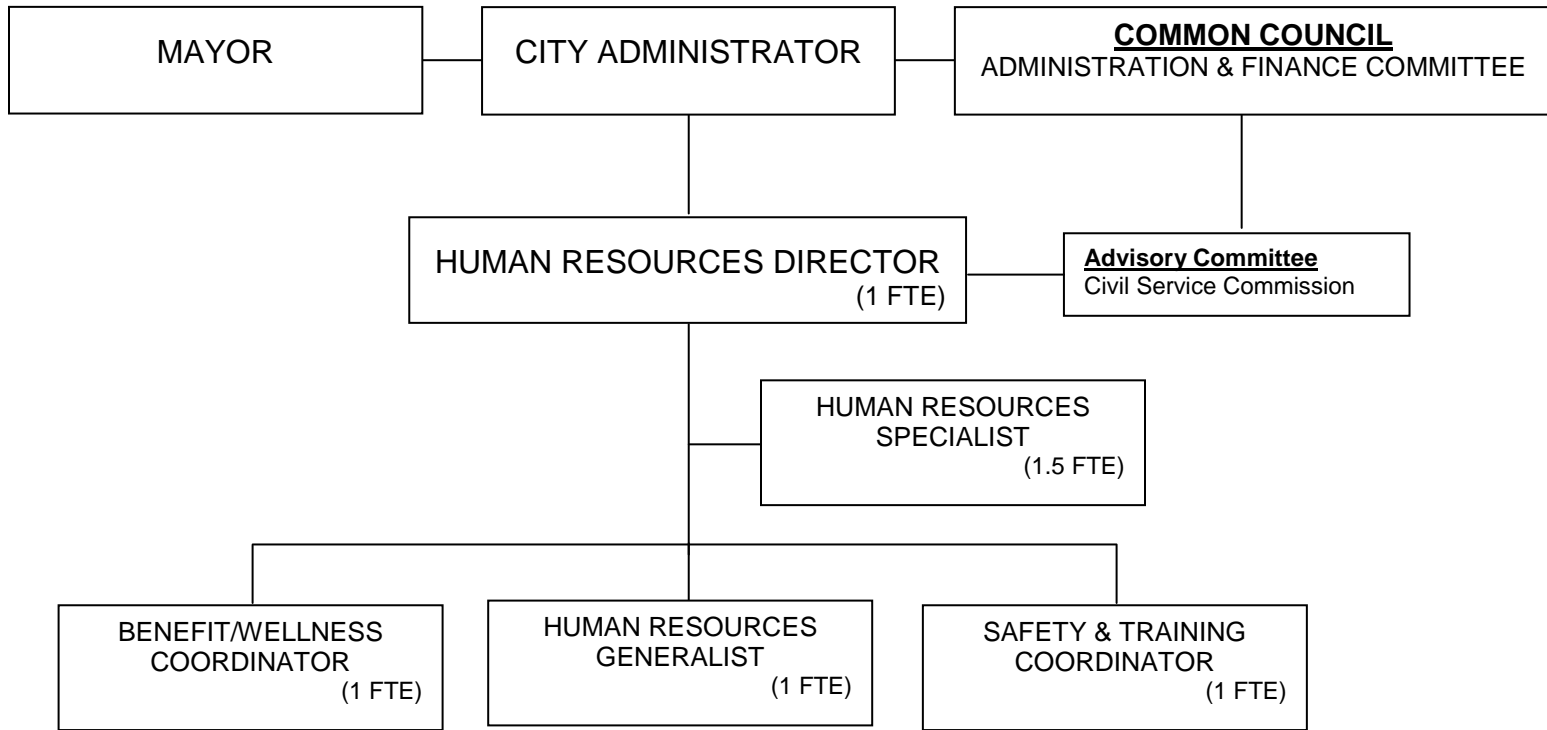
**ORGANIZATIONAL CHART
HEALTH
SENIOR CENTER**



**ORGANIZATIONAL CHART
HEALTH
WOMEN, INFANTS AND CHILDREN (WIC) PROGRAM**

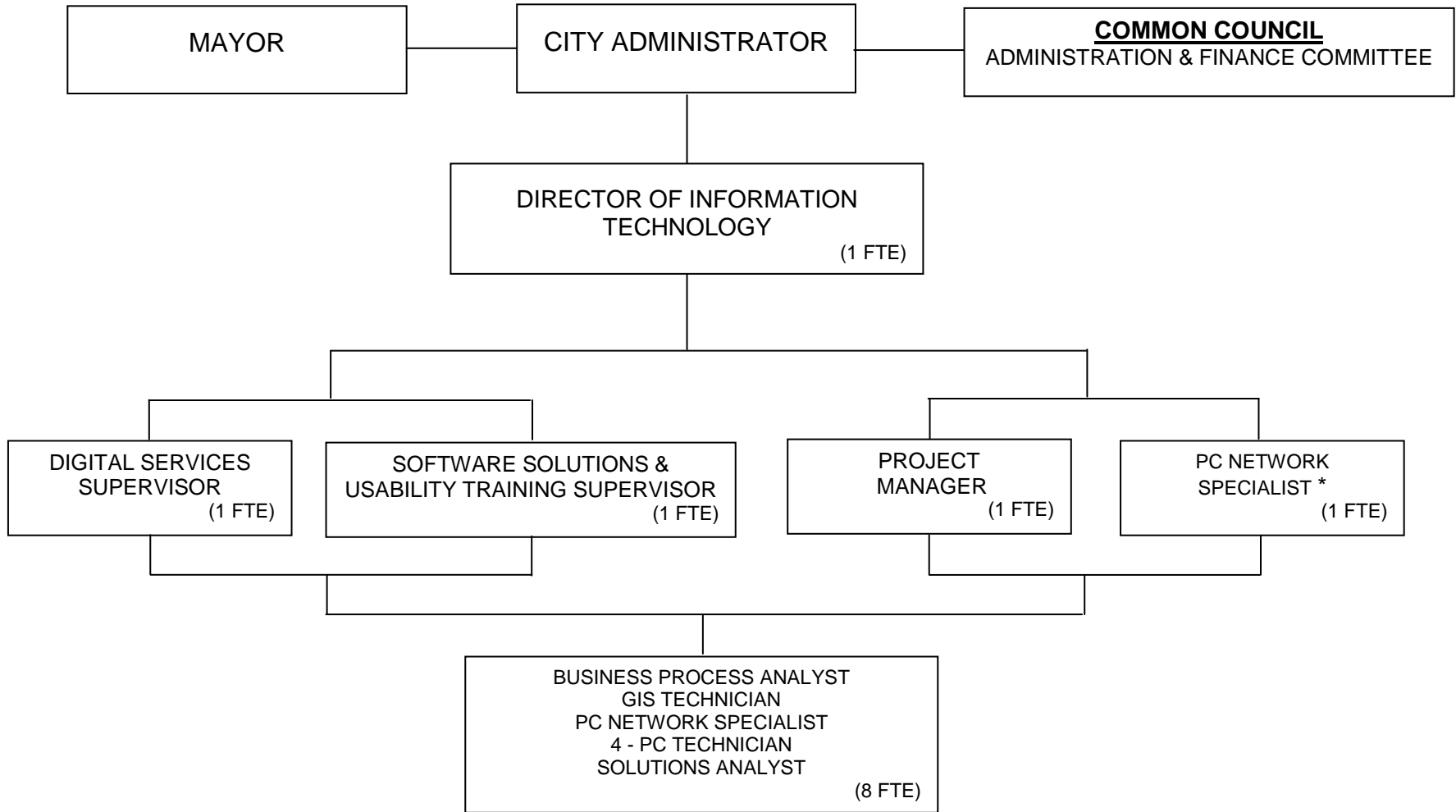


**ORGANIZATIONAL CHART
HUMAN RESOURCES**



CITY FUNDED FTEs: 4.5
OTHER FUNDING SOURCES FTEs: 1.0

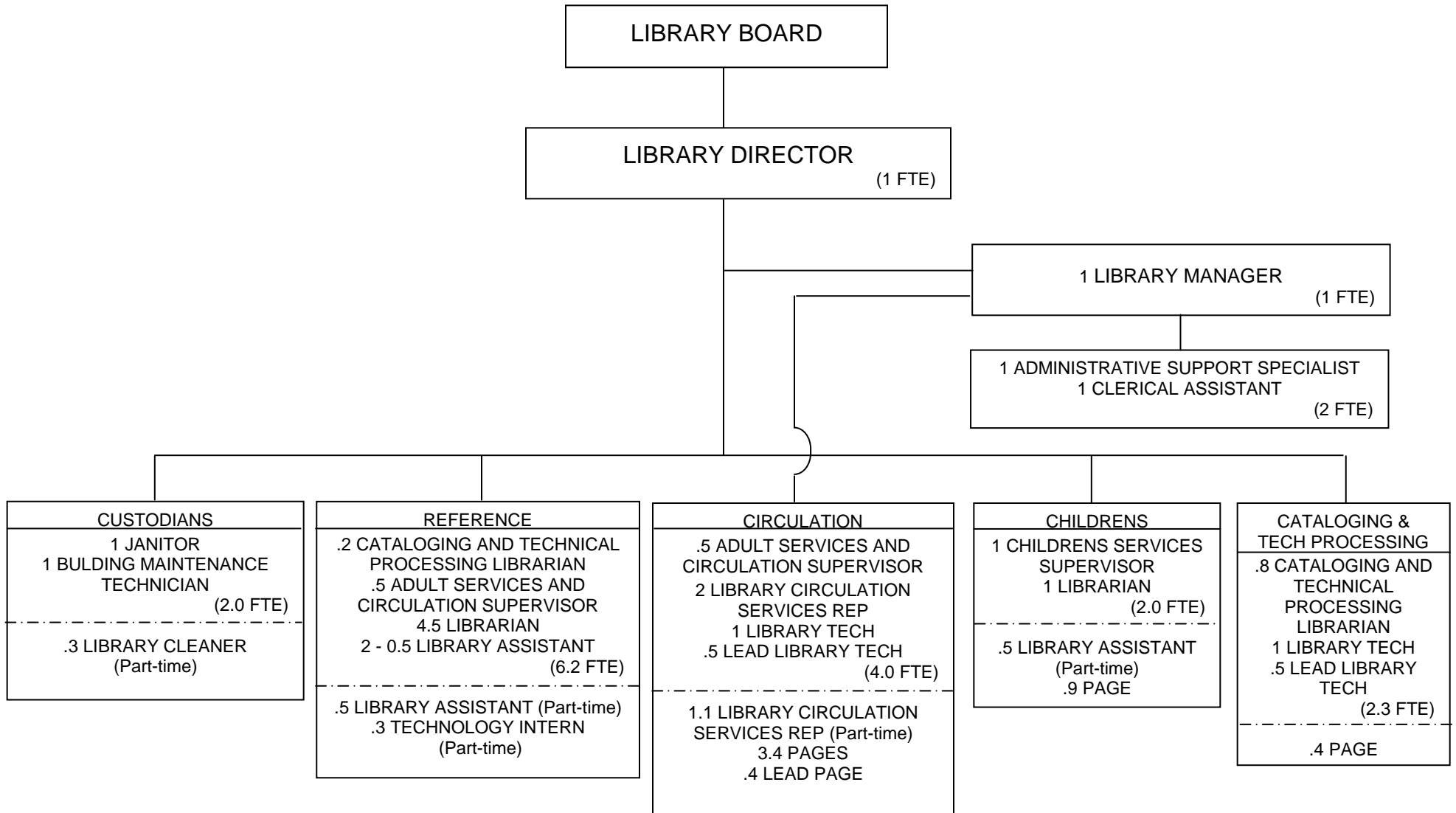
ORGANIZATIONAL CHART INFORMATION TECHNOLOGY



* 1 P.C. Network Specialist to support Police Department

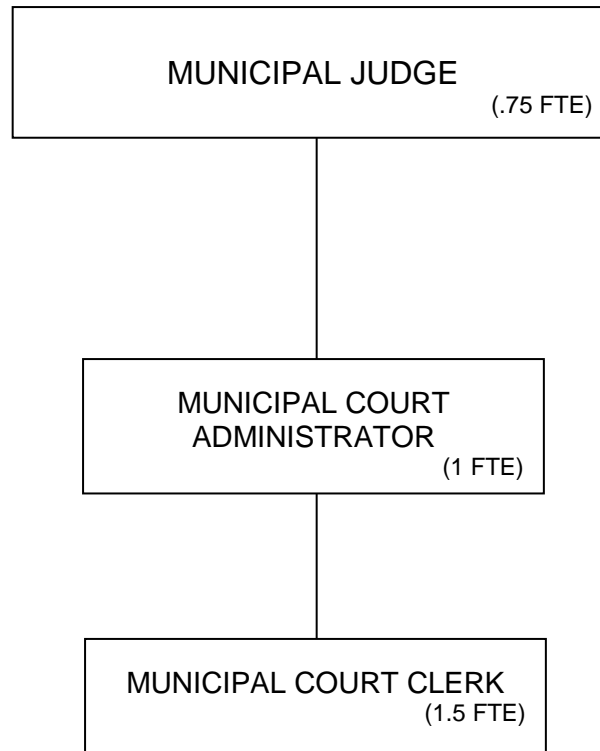
CITY FUNDED FTEs: 13.0

**ORGANIZATIONAL CHART
LIBRARY**



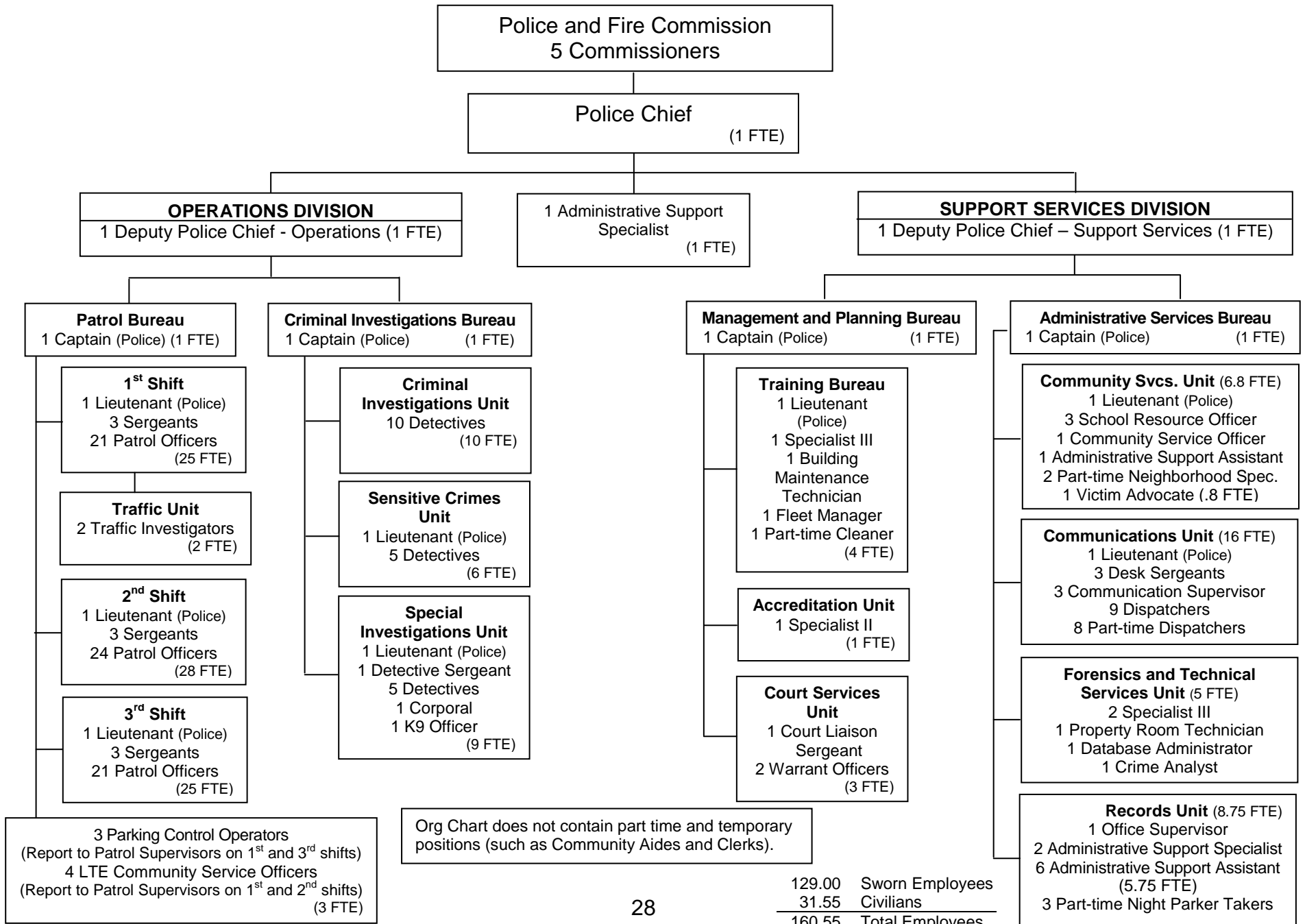
CITY FUNDED FTEs: 20.5
NON-BENEFITED (PART-TIME) FTEs: 7.8
TOTAL FTEs: 28.3

**ORGANIZATIONAL CHART
MUNICIPAL COURT**



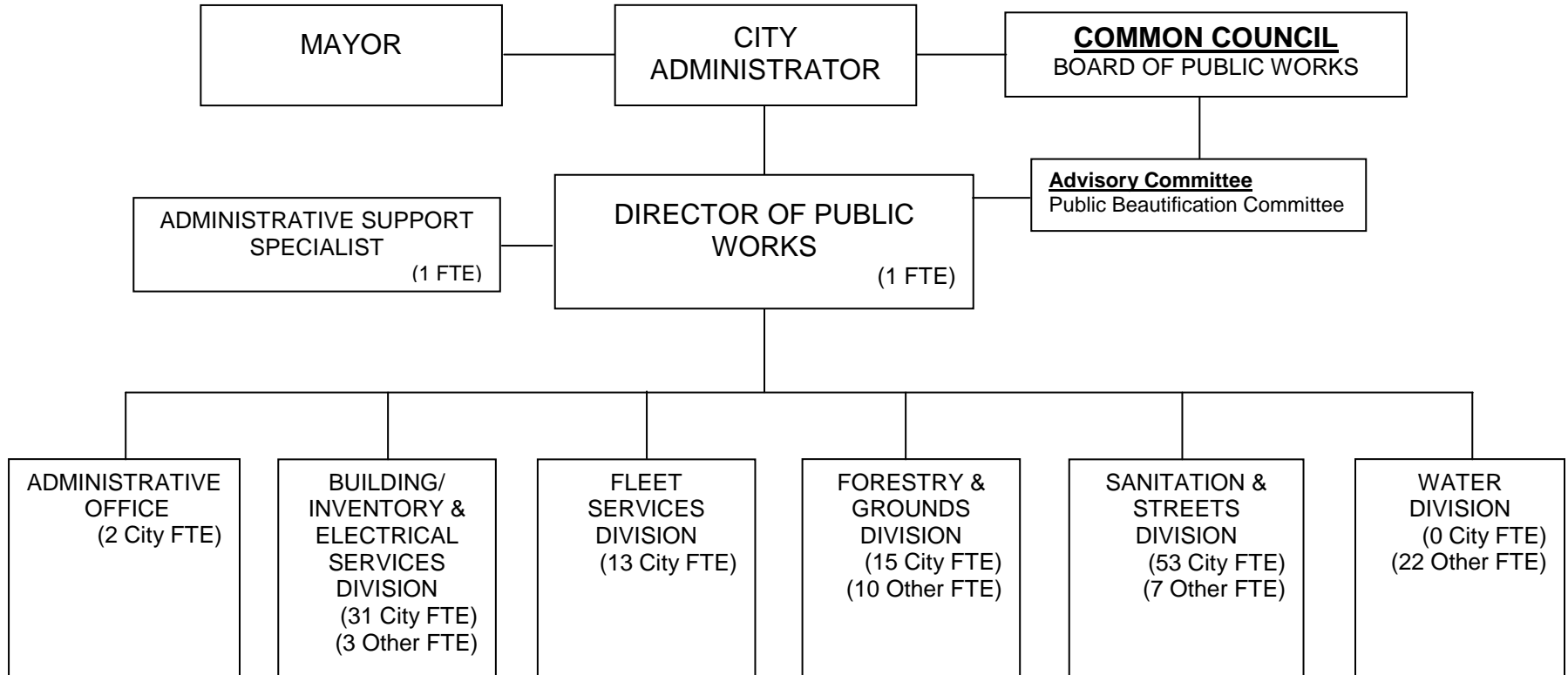
CITY FUNDED FTEs: 2.75
NON-BENEFITED (PART-TIME) FTEs: .50

ORGANIZATIONAL CHART POLICE



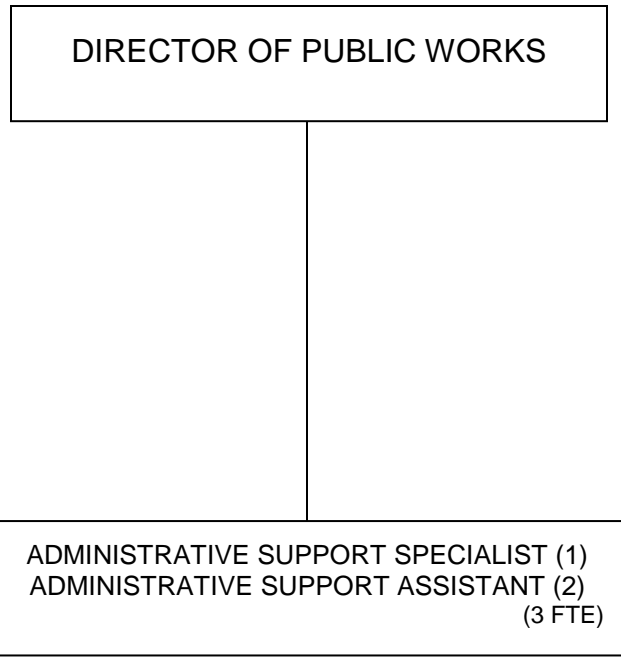
129.00	Sworn Employees
31.55	Civilians
<hr/>	
160.55	Total Employees

**ORGANIZATIONAL CHART
PUBLIC WORKS**



CITY FUNDED FTEs: 116
OTHER FUNDING SOURCES FTEs: 42

**ORGANIZATIONAL CHART
PUBLIC WORKS
ADMINISTRATIVE OFFICE**



**ORGANIZATIONAL CHART
PUBLIC WORKS
BUILDING / INVENTORY AND ELECTRICAL SERVICES**

DIRECTOR OF PUBLIC WORKS

BUILDING & SIGN MAINTENANCE/
INVENTORY SUPERINTENDENT
(1 FTE)

ELECTRICAL ENGINEER/SYSTEMS
MAINTENANCE SUPERINTENDENT
(1 FTE)

BUILDING & SIGN
LEAD PERSON
(1 FTE)

INVENTORY SECTION
LEAD INVENTORY SERVICES
SPECIALIST (1)
INVENTORY SERVICES
SPECIALIST (2)
(3 FTE)

LEAD ELECTRICAL
MECHANIC
(CERTIFIED)
(1 FTE)

CARPENTRY SECTION
LEAD CARPENTER (1)
CARPENTER (1)
(2 FTE)

SIGN INSTALLATION SECTION
MAINTENANCE REPAIRER (7)
(7 FTE)

GENERAL OPERATION
ELECTRICAL MECHANIC (9)
(9 FTE)

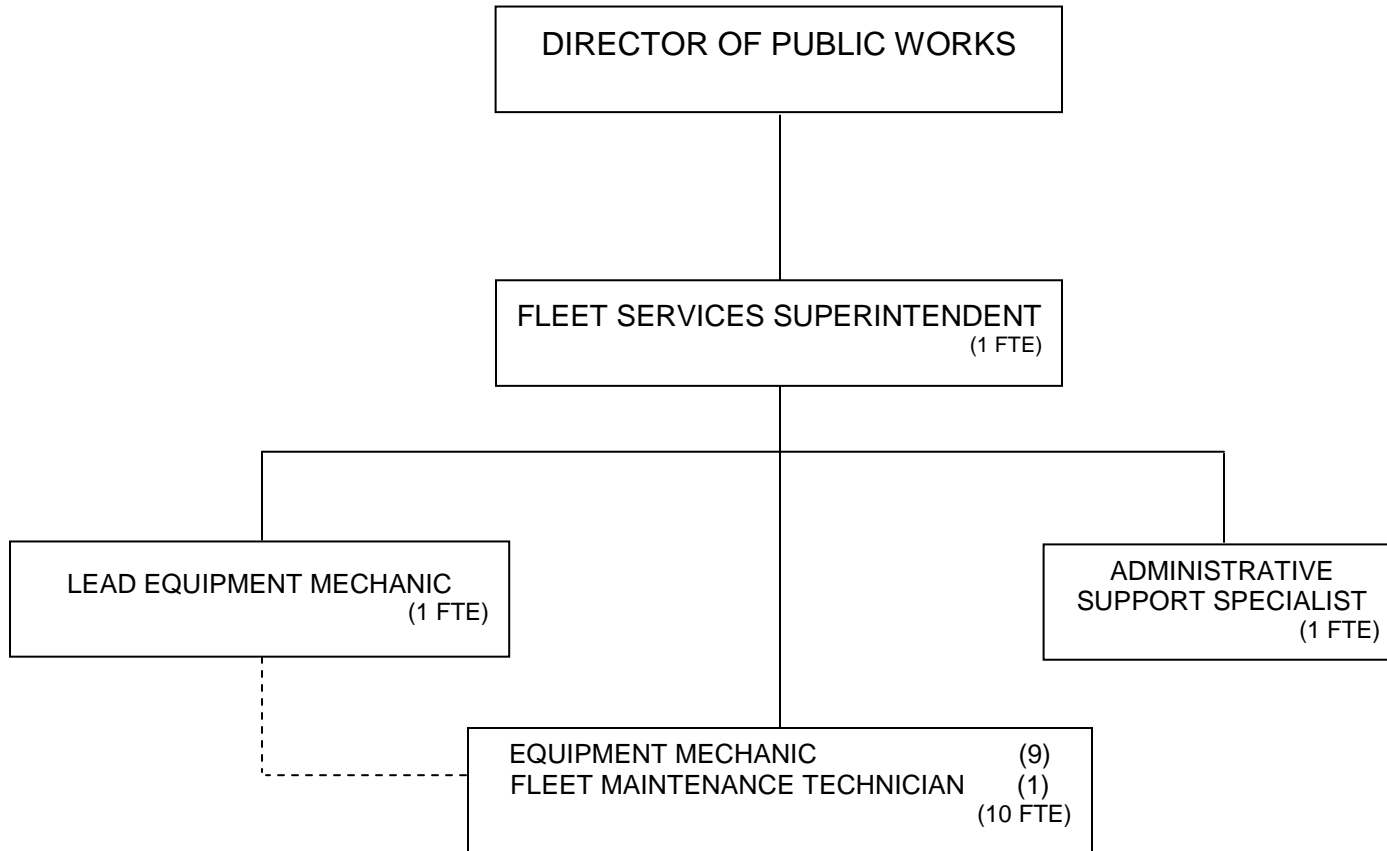
CUSTODIAL SECTION
CUSTODIAN (1)
JANITOR (1)
LABORER (1)
(3 FTE)

PLUMBING & HEATING
SECTION
PLUMBER (1)
HVAC TECHNICIAN (1)
(2 FTE)

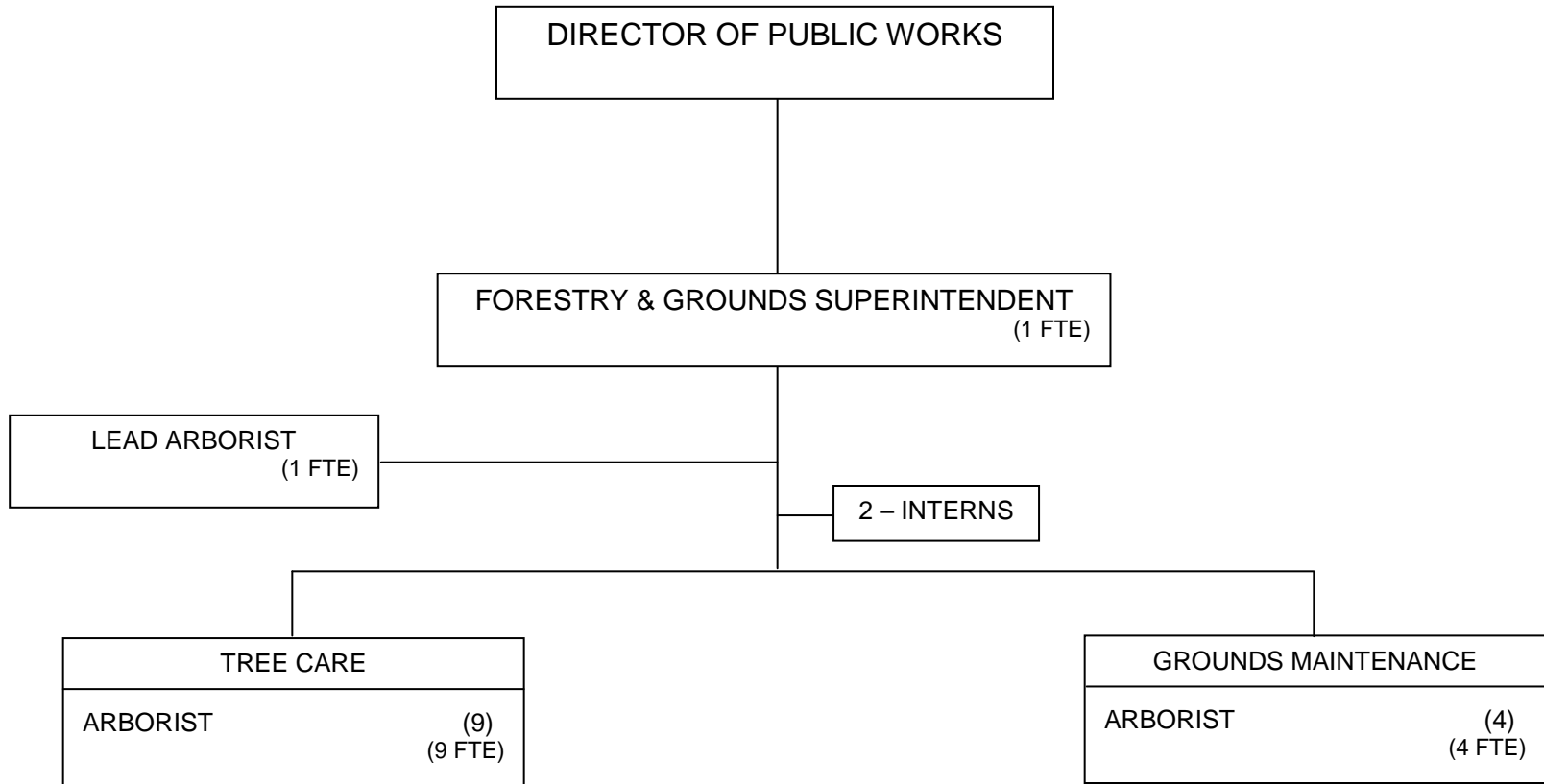
PAINTING SECTION
PAINTER (1)
(1 FTE)

Org Chart does not reflect the seasonal temporary laborer positions.

**ORGANIZATIONAL CHART
PUBLIC WORKS
FLEET SERVICES**

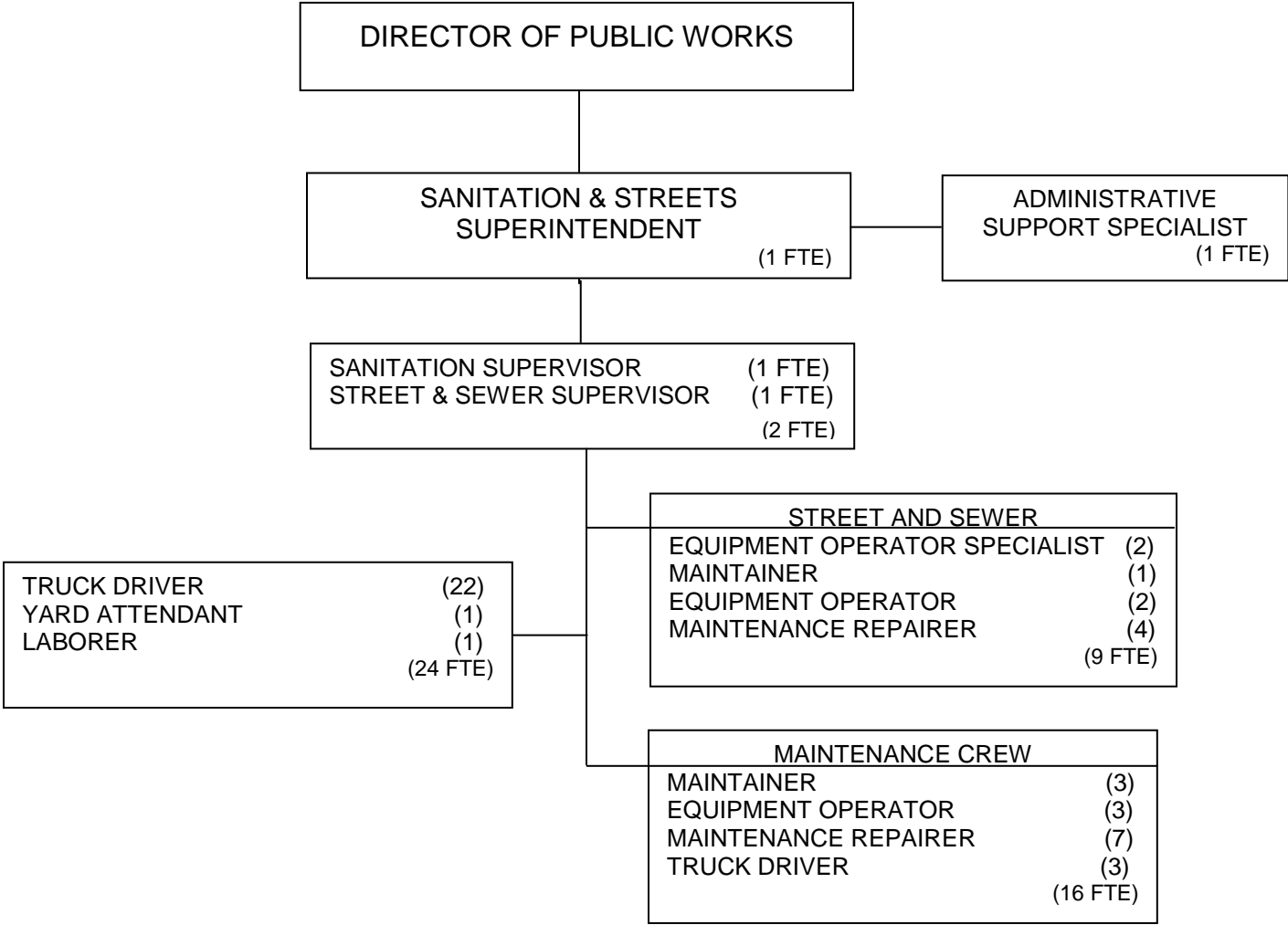


**ORGANIZATIONAL CHART
PUBLIC WORKS
FORESTRY & GROUNDS**



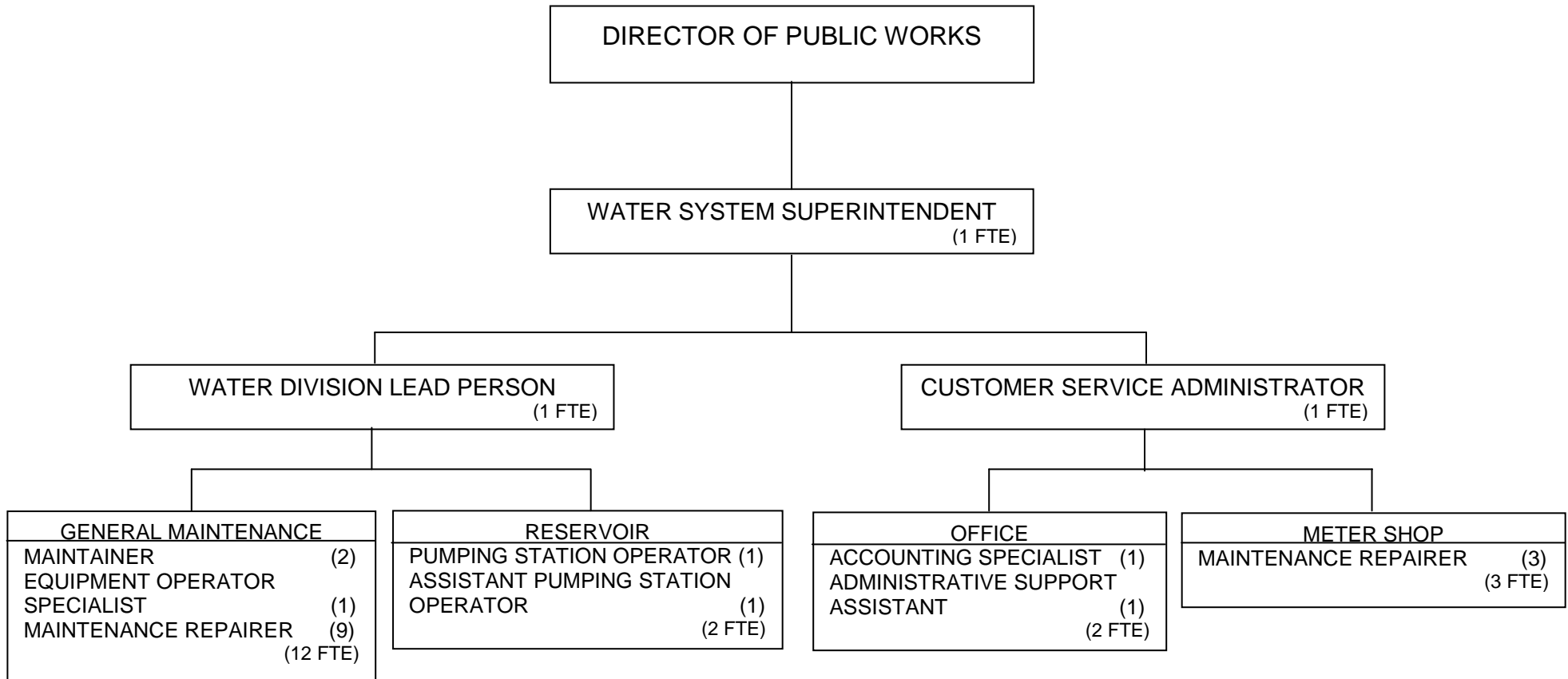
Org Chart does not reflect the seasonal temporary laborer positions.

**ORGANIZATIONAL CHART
PUBLIC WORKS
SANITATION & STREETS**



Org Chart does not reflect the seasonal temporary laborer positions.

**ORGANIZATIONAL CHART
PUBLIC WORKS
WATER**



NOTE: Other personnel working in support of the Water Utility (A&F, Treasurer, PW, IT) are also funded by the Water Utility, but are not included on this chart. Further, some of the positions reflected above on this chart also perform work funded by other Utility Budgets (Sanitary, Storm, etc.).