

City of West Allis



Organizational Chart

2015

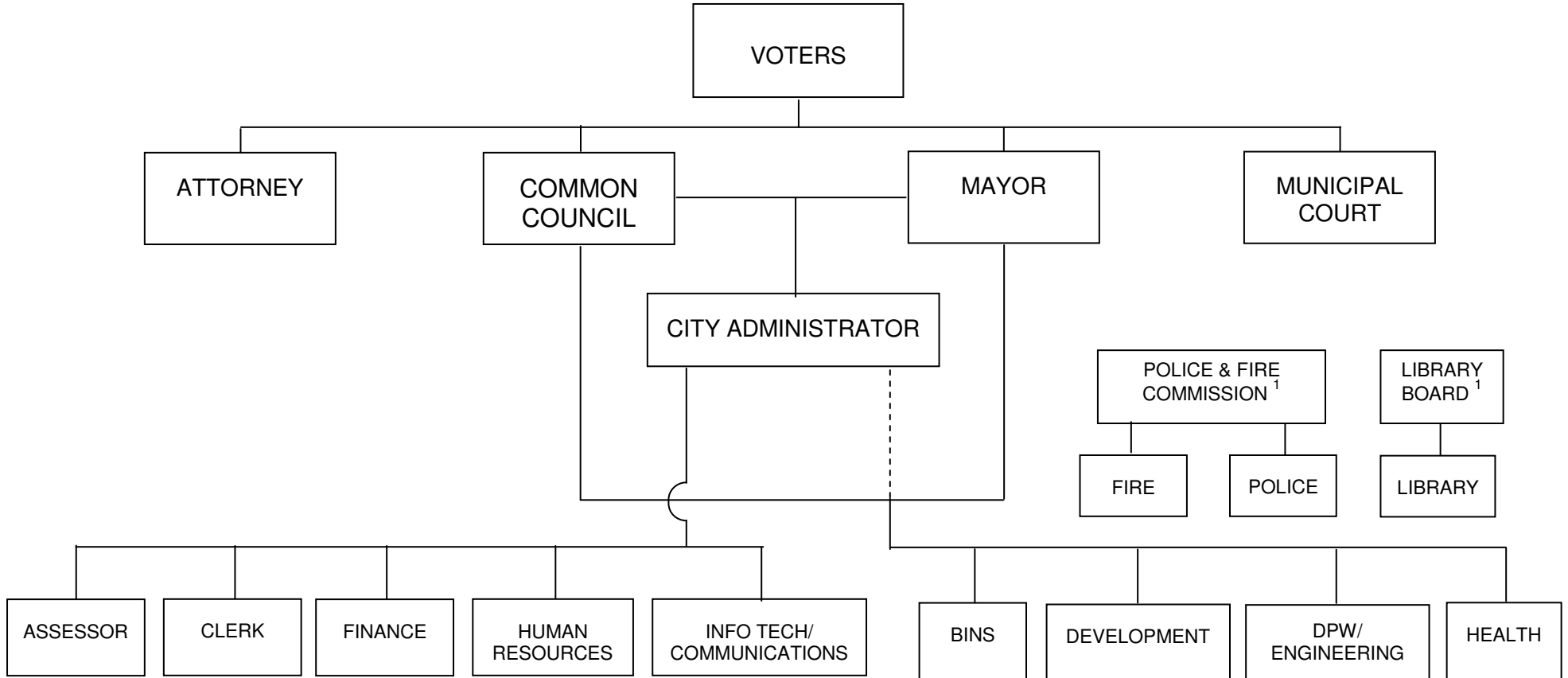
ORGANIZATIONAL CHARTS

January 1, 2015

	<u>Page</u>
City of West Allis.....	1
Council Policy Committees.....	2
Advisory Committees.....	3
Mayor	4
Assessor.....	5
Attorney	6
Building Inspections & Neighborhood Services	7
City Administrator	8
Clerk.....	9
Development	10
Community Development	11
Planning & Zoning	12
Finance.....	13
Fire	14
Health.....	15
Health Administrative Services	16
Community Health Services	17
Environmental Health & Consumer Protection	18
Interdisciplinary Health Services.....	19
Senior Center	20
Human Resources.....	21
Information Technology / Communications	22
Library	23

	<u>Page</u>
Municipal Court.....	24
Police.....	25
Public Works / Engineering.....	26
Administrative Office.....	27
Building / Inventory & Electrical Services.....	28
Fleet Services.....	29
Forestry & Grounds	30
Sanitation & Streets.....	31
Water	32
Engineering	33

**ORGANIZATIONAL CHART
CITY OF WEST ALLIS**

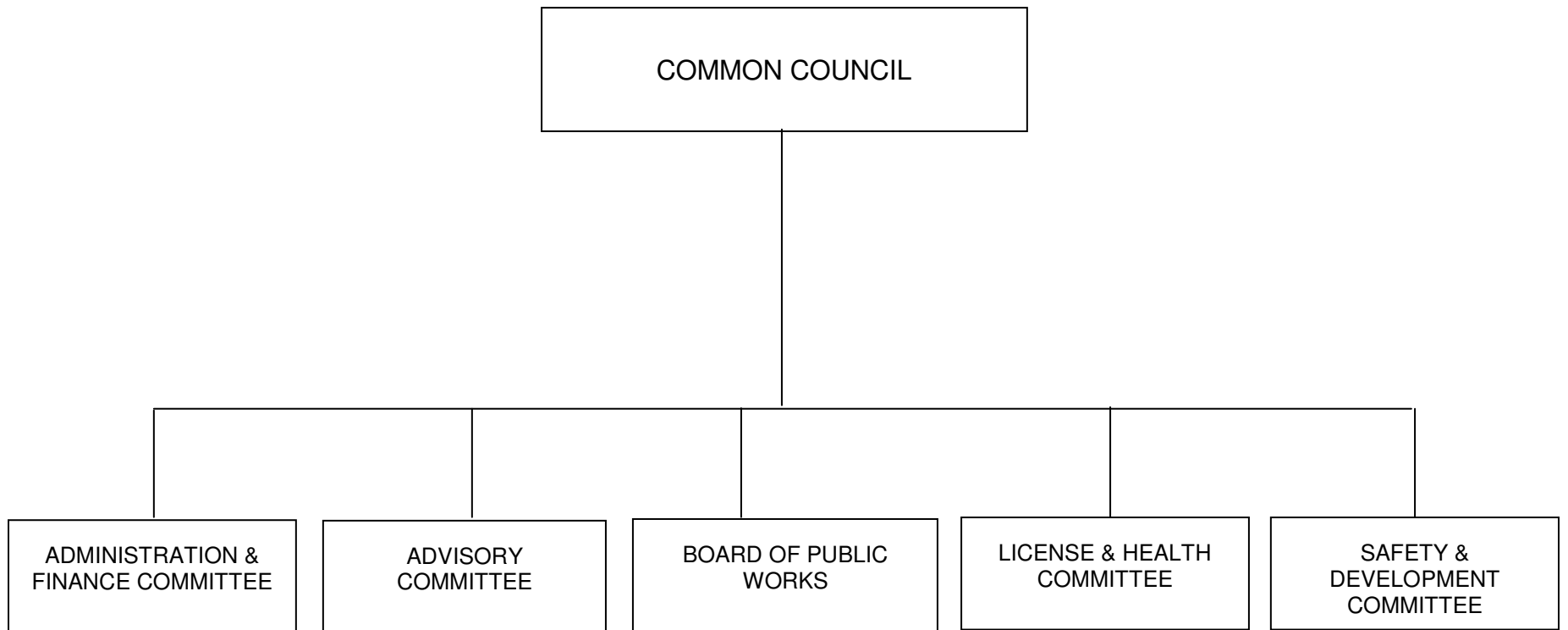


¹ Appointed by the Mayor and confirmed by the Common Council, with policy responsibility.

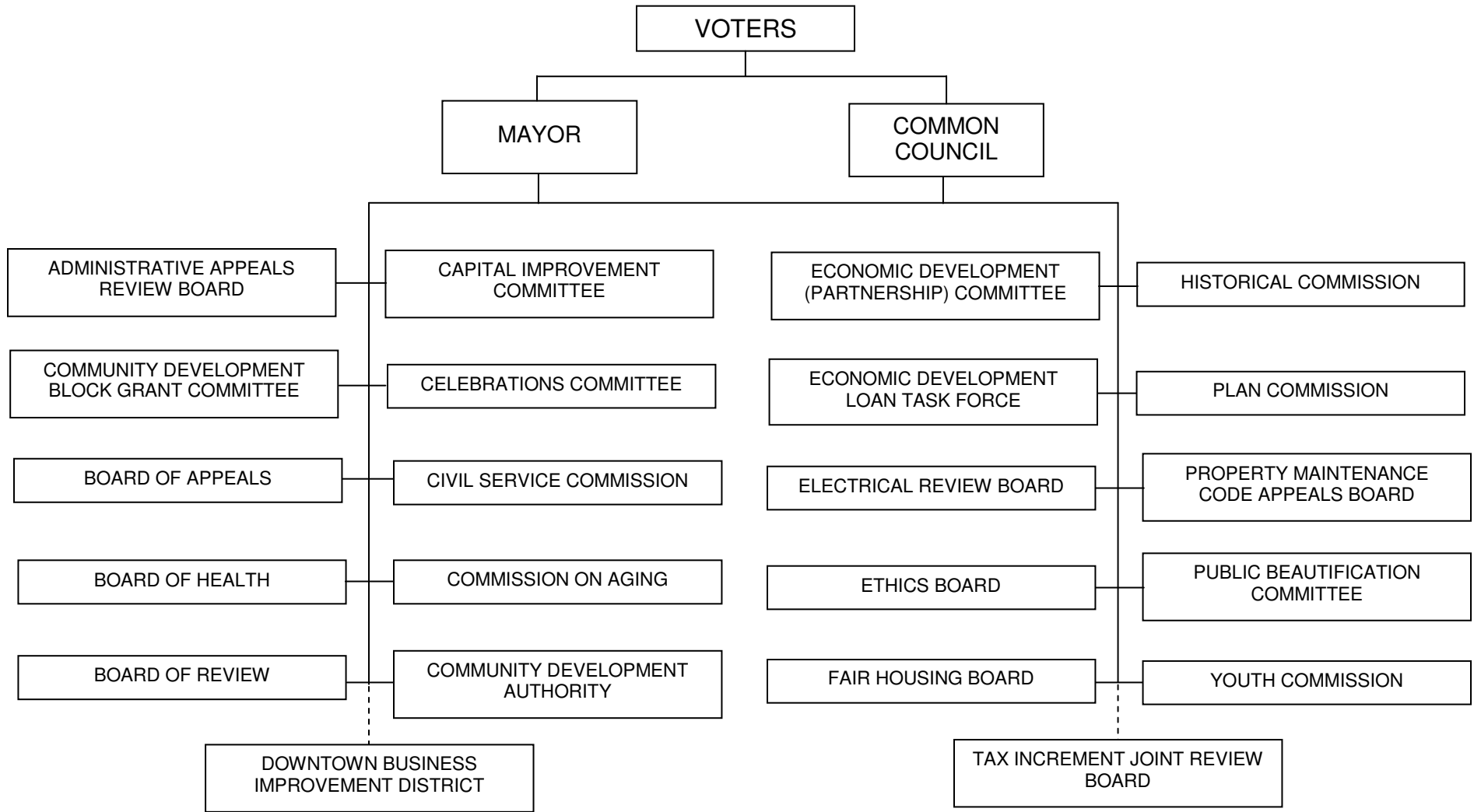
NOTE: Solid lines indicate lines of policy and program authority; dashed lines indicate lines of administrative and financial authority.

Regular positions per 2015 budget report: 513.68 City FTE

**ORGANIZATIONAL CHART
COUNCIL POLICY COMMITTEES**

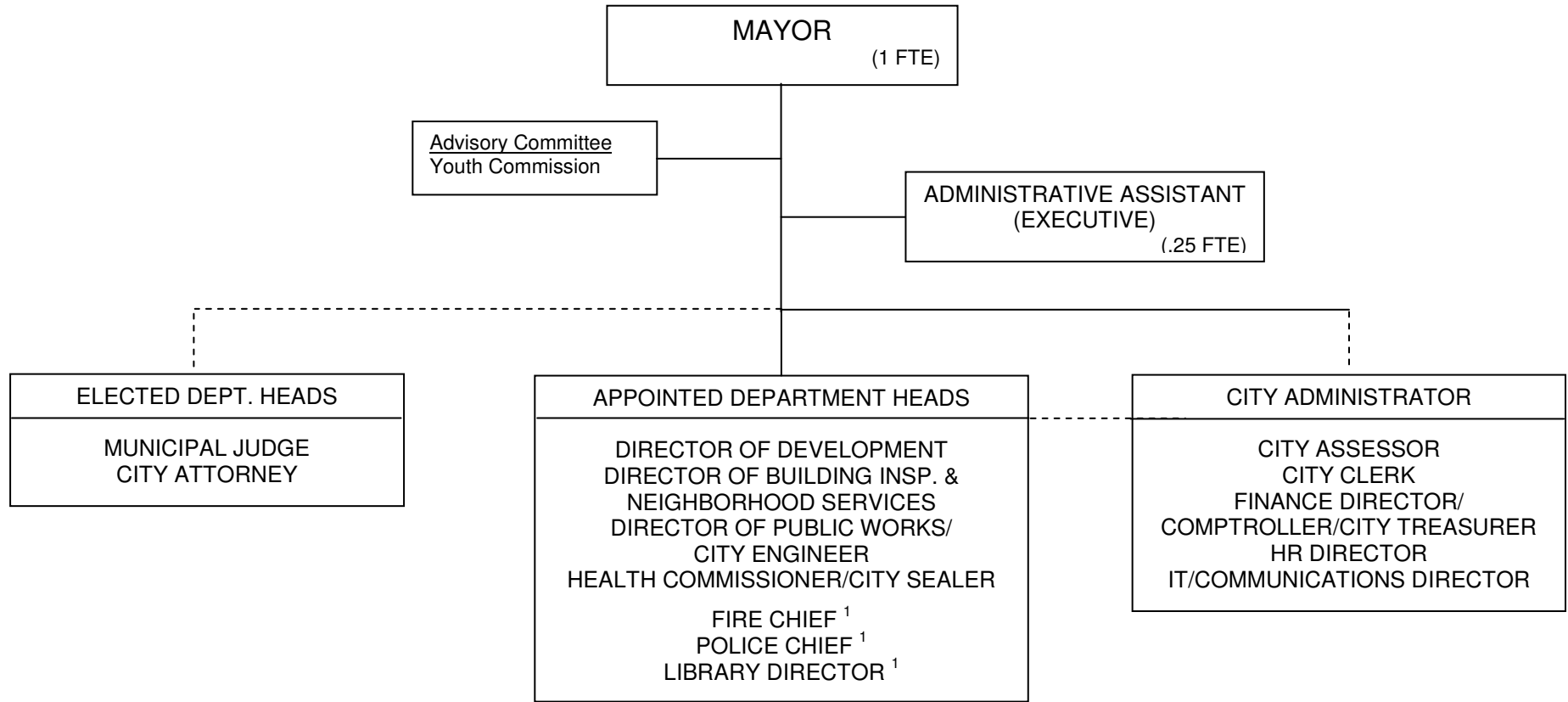


ORGANIZATIONAL CHART ADVISORY COMMITTEES



Advisory Committee members are appointed by the Mayor and confirmed by the Common Council.

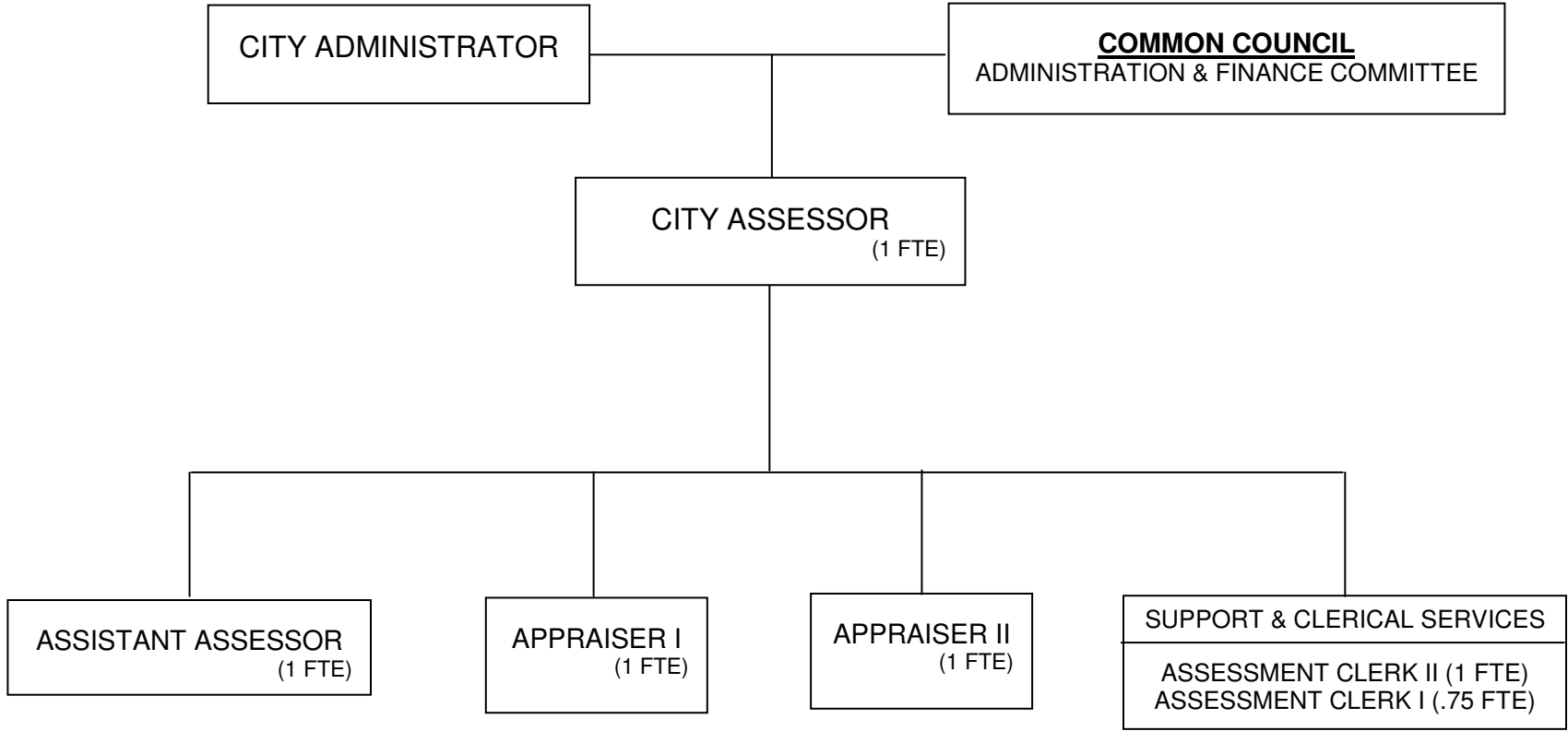
**ORGANIZATIONAL CHART
MAYOR**



¹ Reports directly to Police & Fire Commission and Library Board respectively.

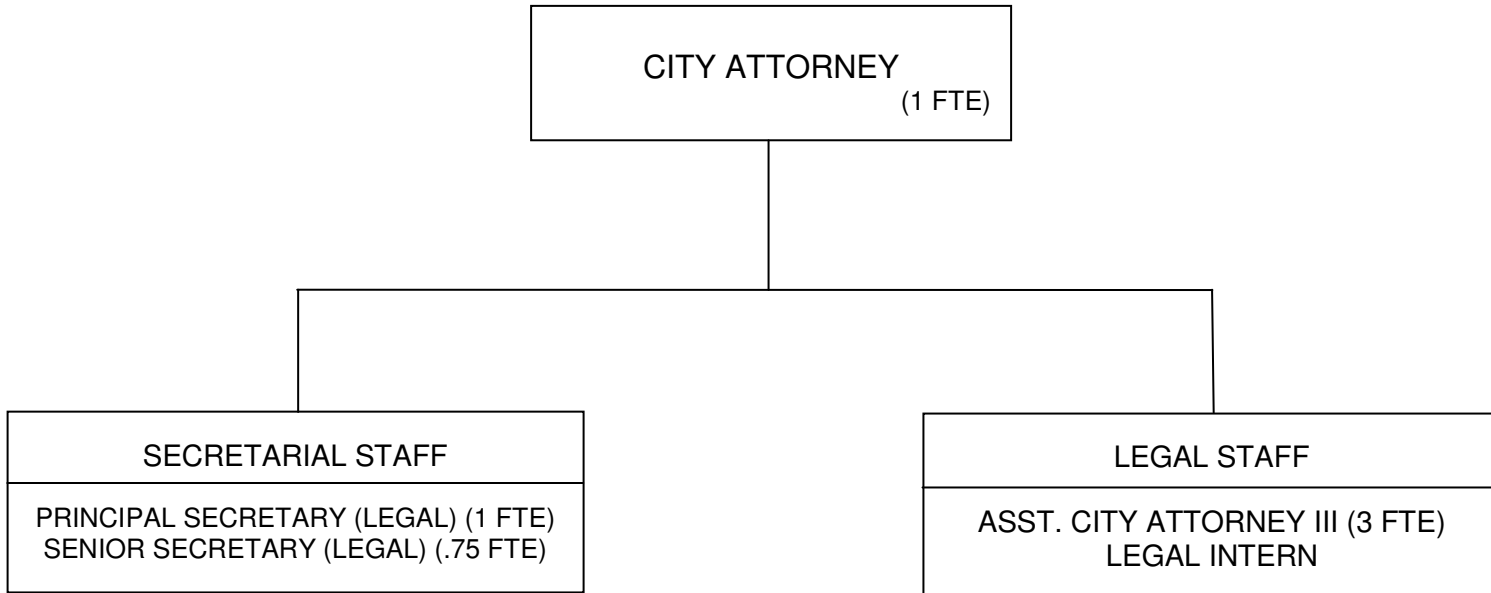
CITY FUNDED FTEs: 1.25

**ORGANIZATIONAL CHART
ASSESSOR**



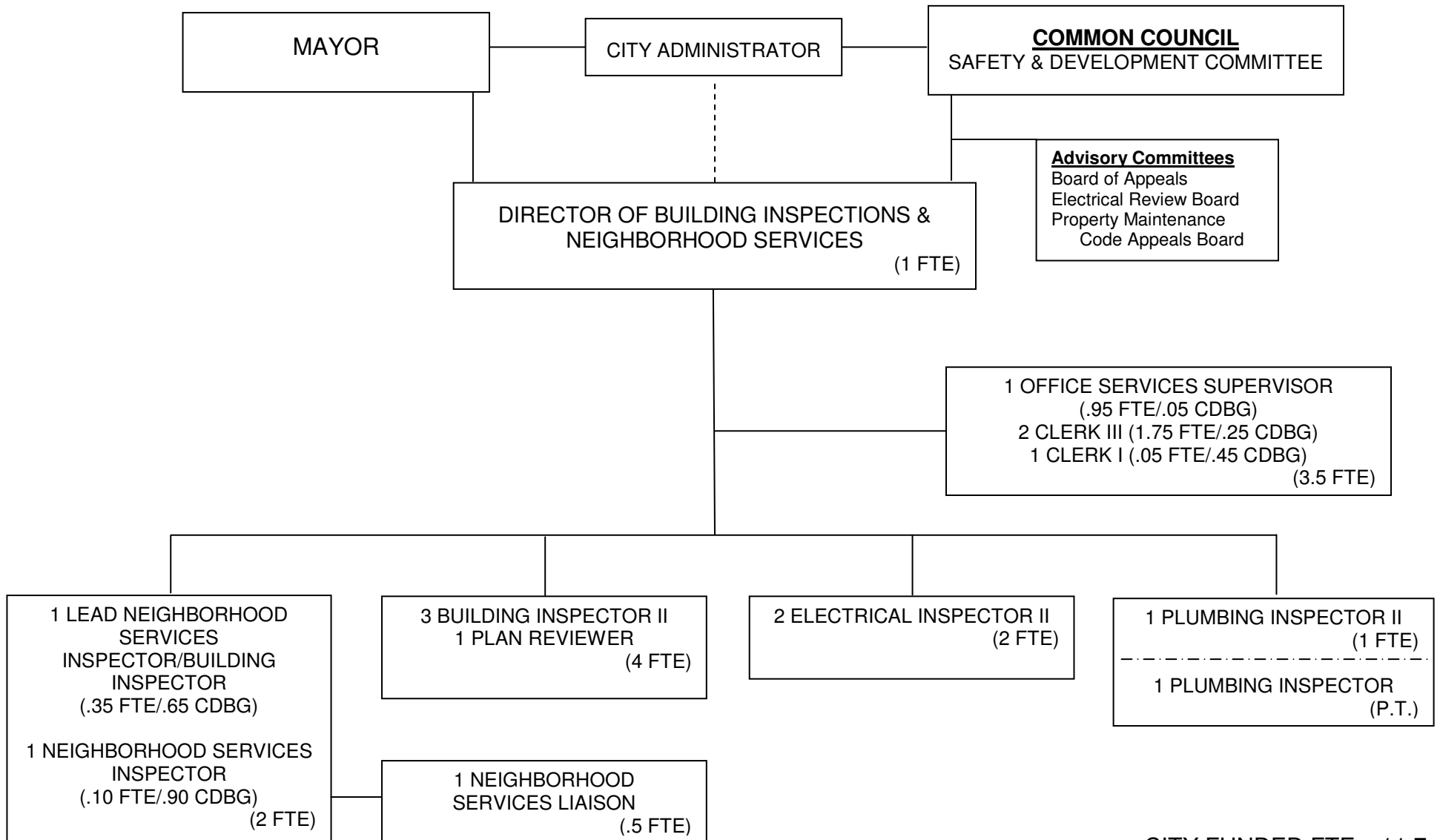
CITY FUNDED FTEs: 5.75

**ORGANIZATIONAL CHART
ATTORNEY**



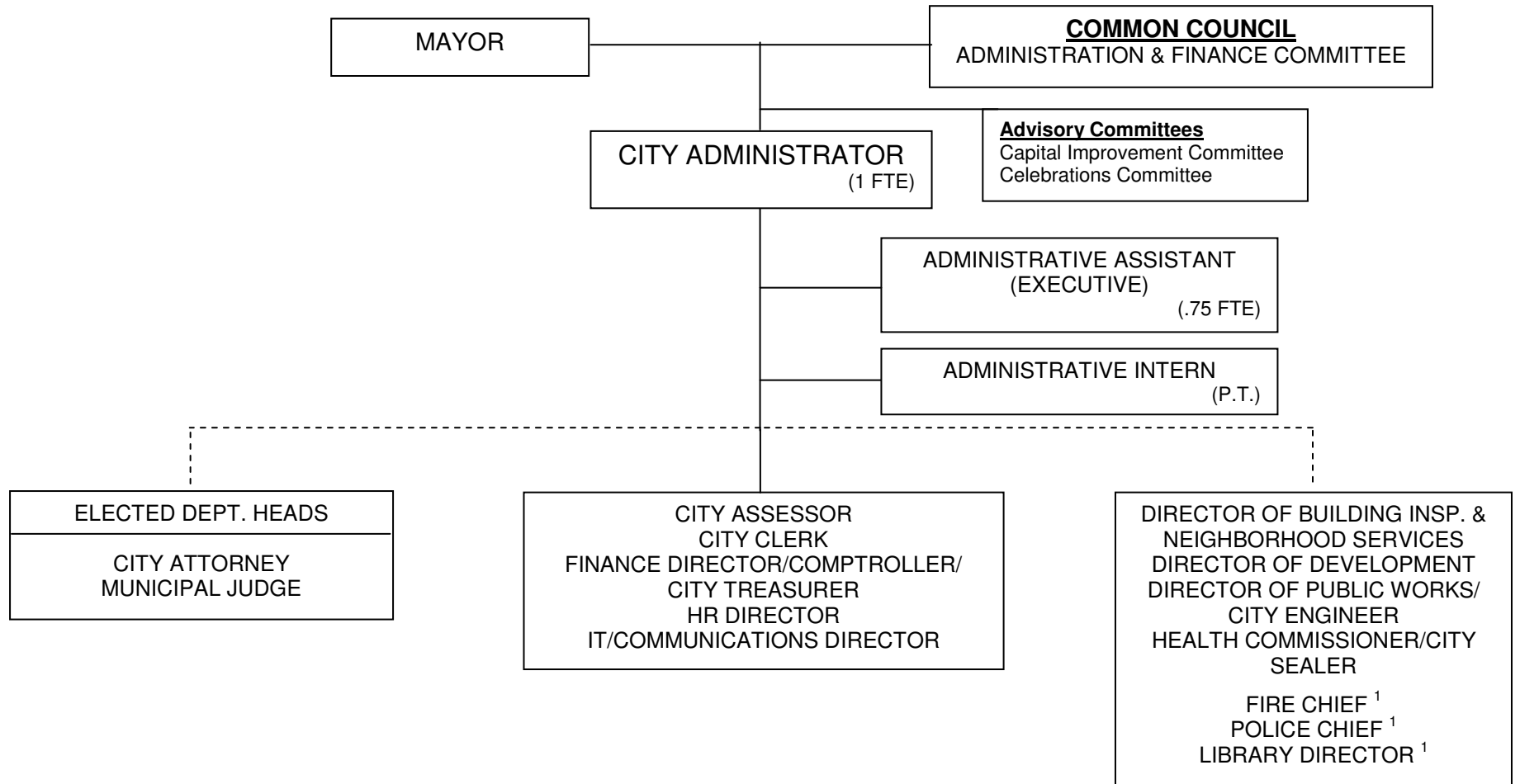
CITY FUNDED FTEs: 5.75

**ORGANIZATIONAL CHART
BUILDING INSPECTIONS & NEIGHBORHOOD SERVICES**



CITY FUNDED FTEs: 11.7
OTHER FUNDING SOURCES FTEs: 2.3

**ORGANIZATIONAL CHART
CITY ADMINISTRATOR**

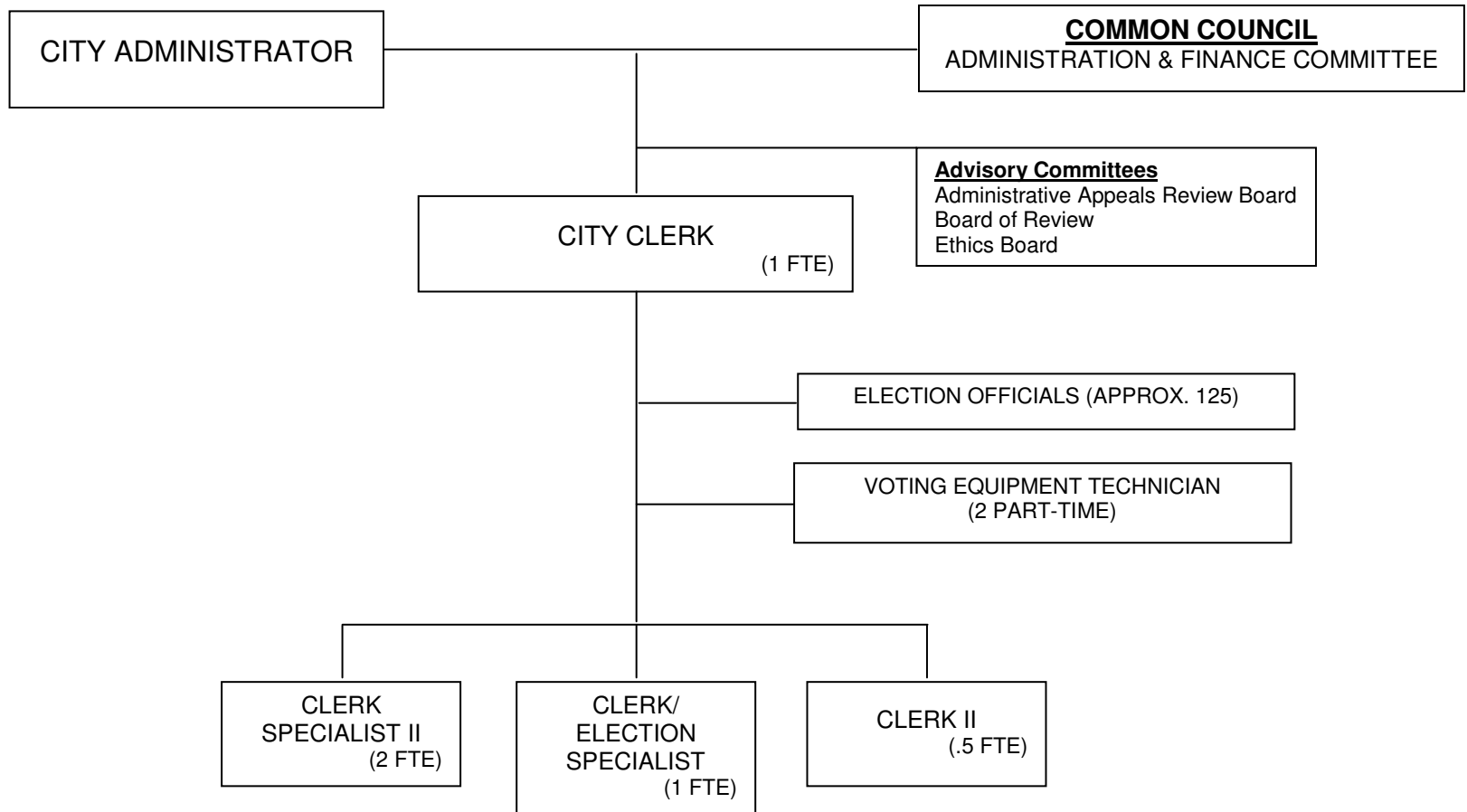


¹ Reports directly to Police & Fire Commission and Library Board respectively.

Note: Solid lines indicate lines of policy and program authority; dashed lines indicate lines of administrative and financial authority.

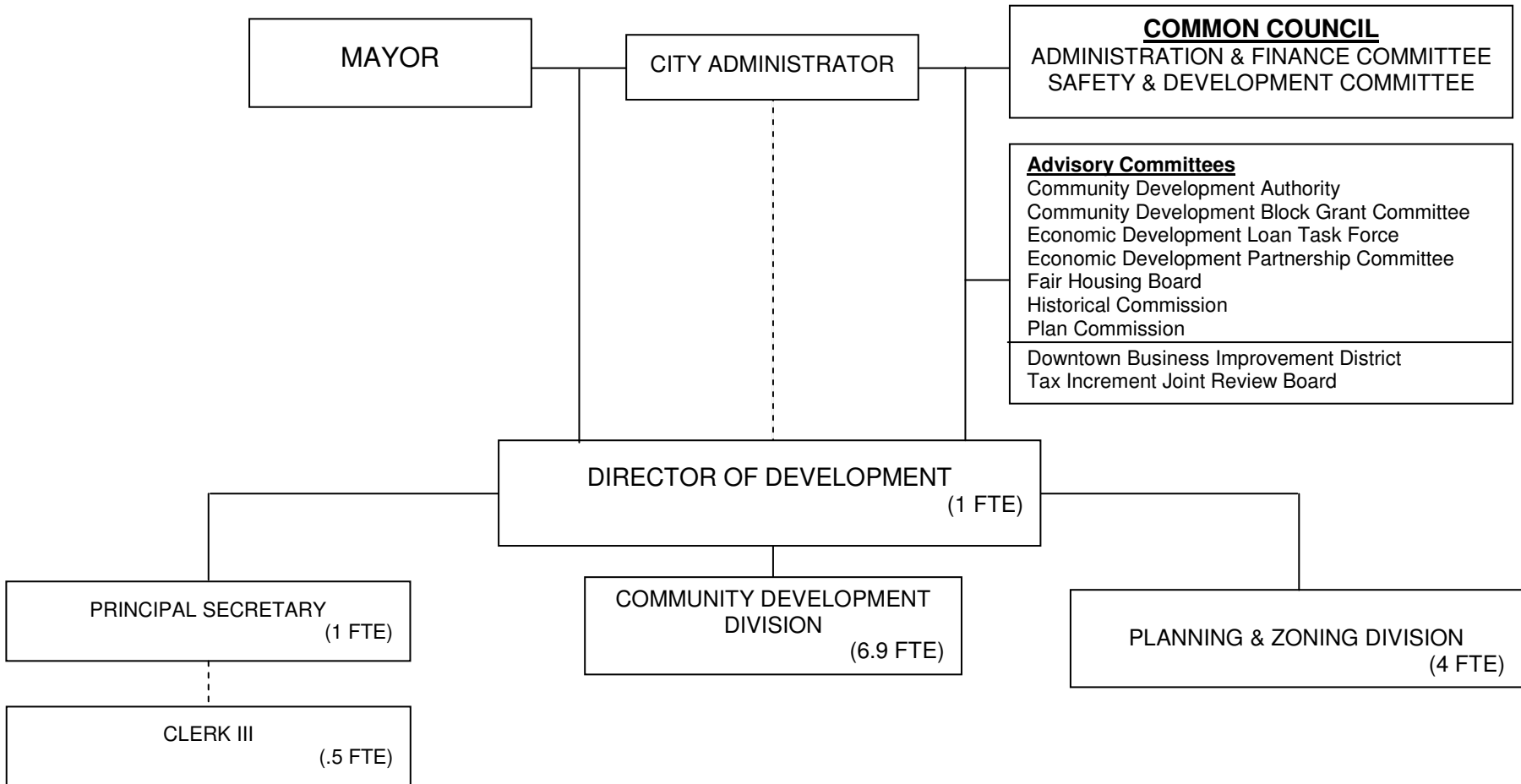
CITY FUNDED FTEs: 1.75

**ORGANIZATIONAL CHART
CLERK**



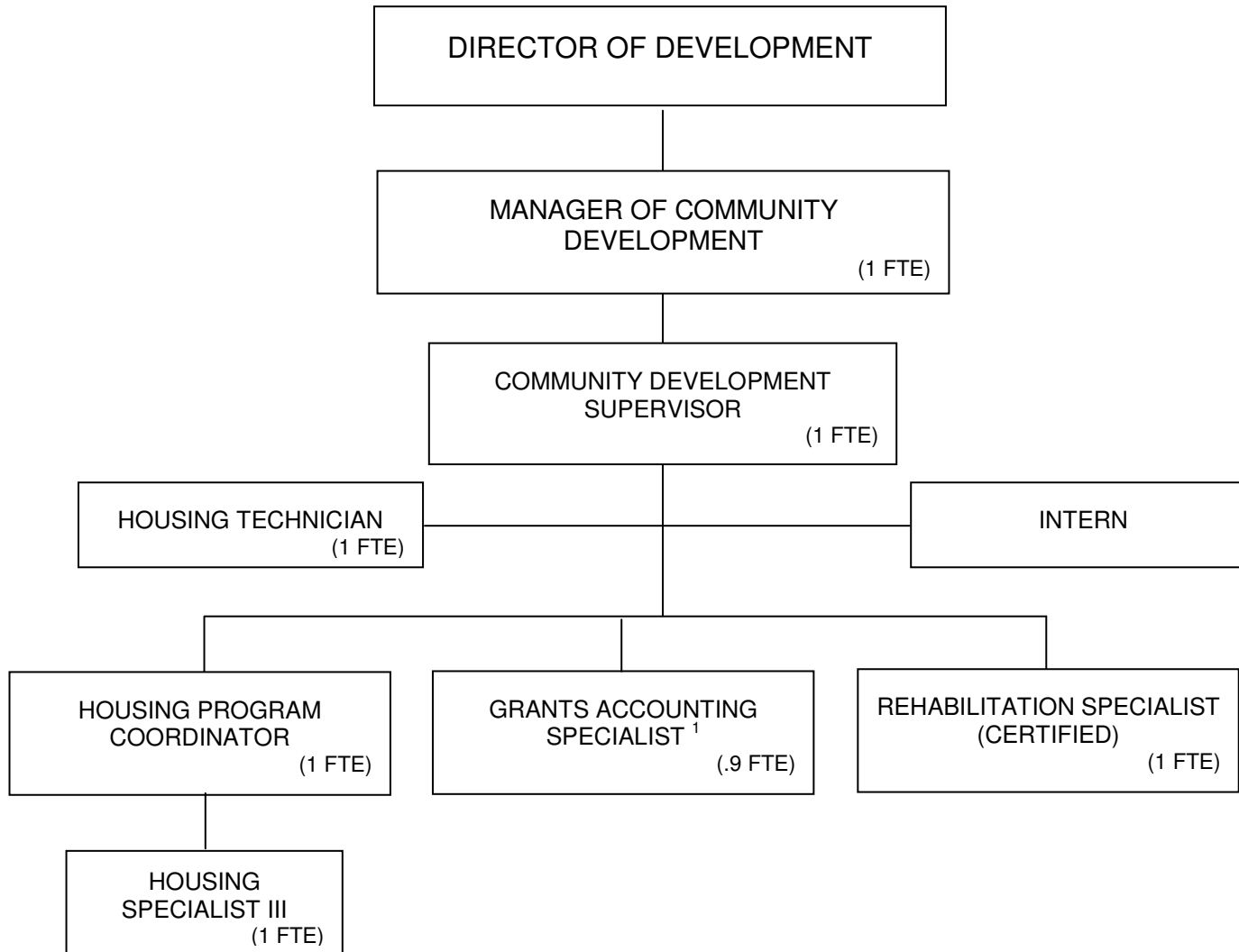
CITY FUNDED FTEs: 4.5

ORGANIZATIONAL CHART DEVELOPMENT



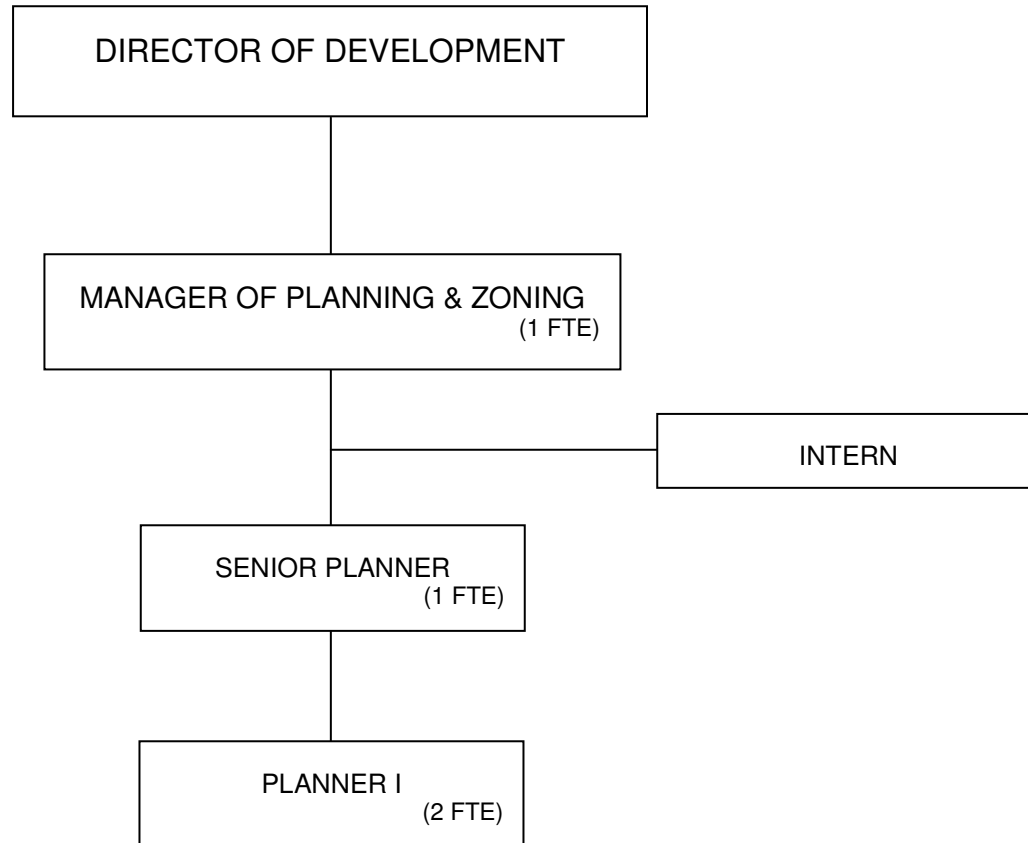
CITY FUNDED FTEs: 3.03
OTHER FUNDING SOURCES FTEs: 10.37

**ORGANIZATIONAL CHART
COMMUNITY DEVELOPMENT**

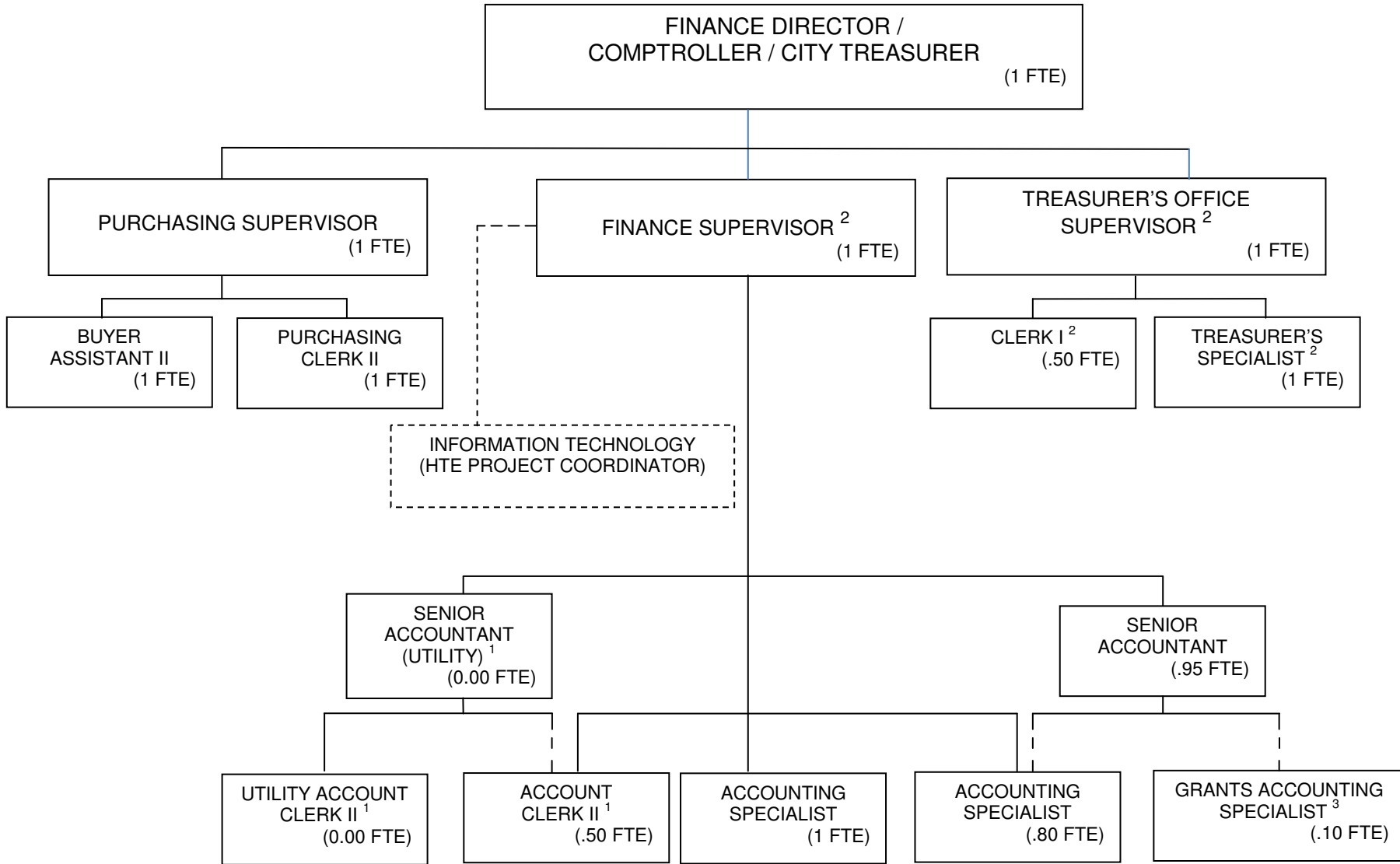


¹ This position is divided between Community Development and Finance.

**ORGANIZATIONAL CHART
PLANNING & ZONING**



ORGANIZATIONAL CHART FINANCE DEPARTMENT



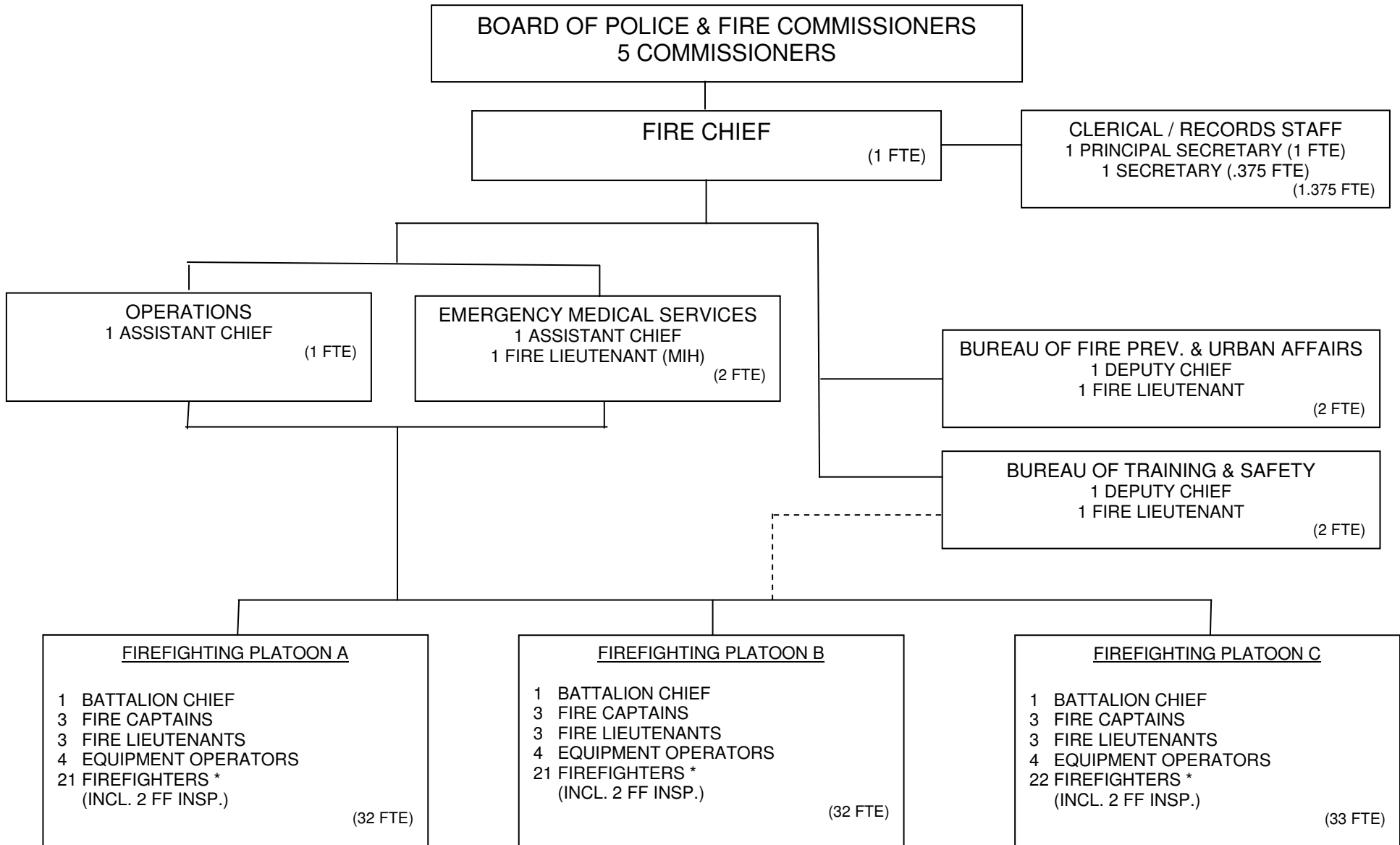
¹ These positions are represented in the Public Works Water Division budget, but are under the direction of the Finance Department.

² These positions are supported by various funding sources.

³ This position is divided between Community Development and Finance.

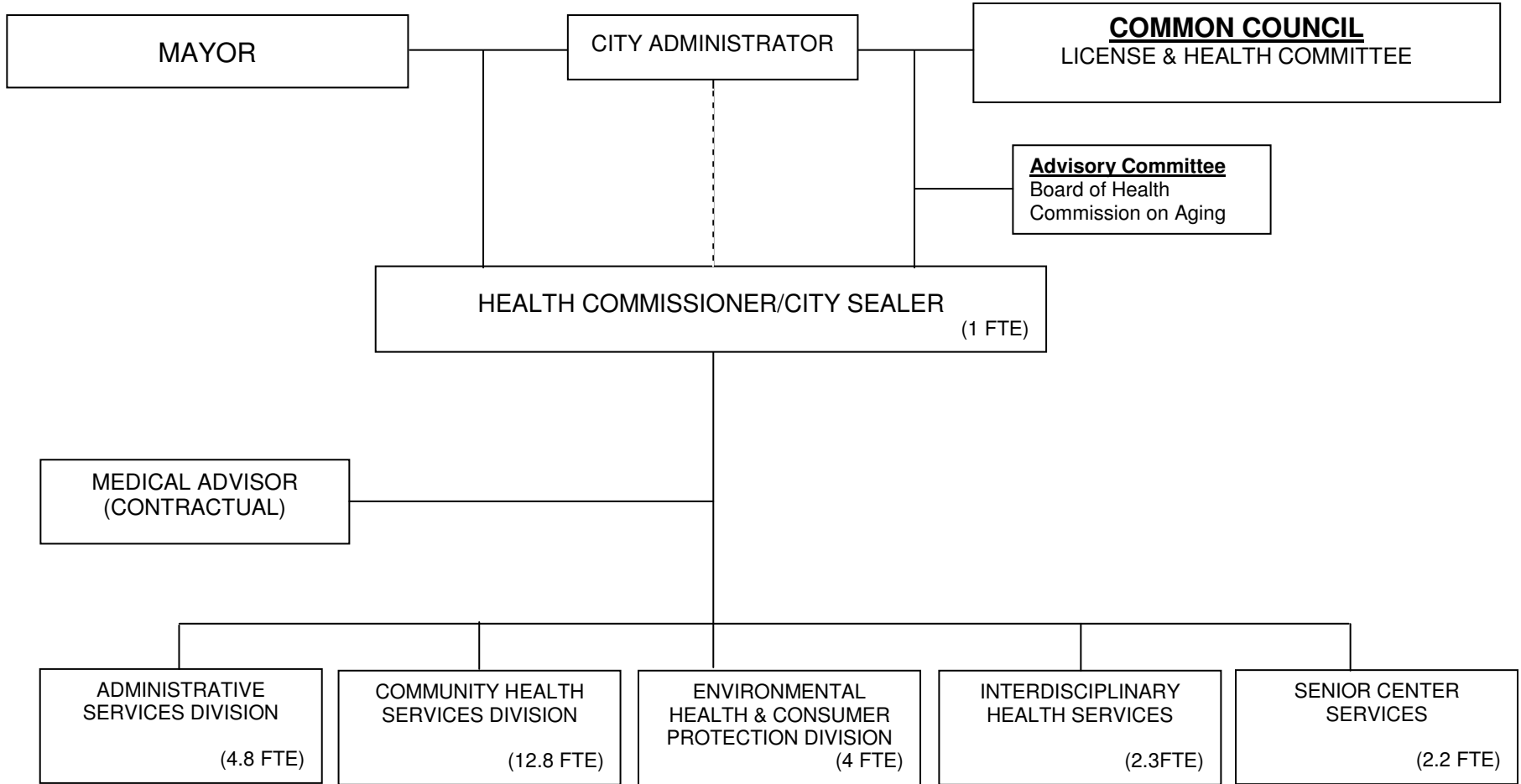
CITY FUNDED FTEs: 9.3
OTHER FUNDING SOURCES FTEs: 1.55

ORGANIZATIONAL CHART FIRE



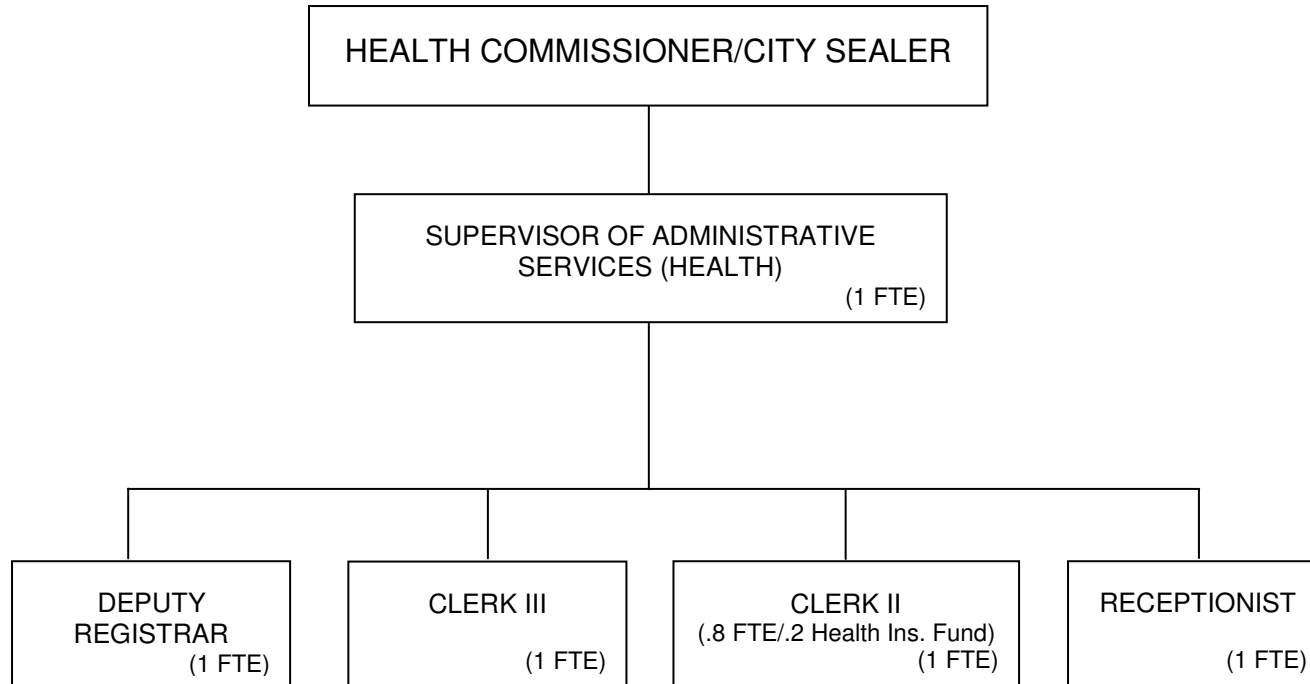
CITY FUNDED FTEs: 106.0
OTHER FUNDING SOURCES FTEs: .375

ORGANIZATIONAL CHART HEALTH

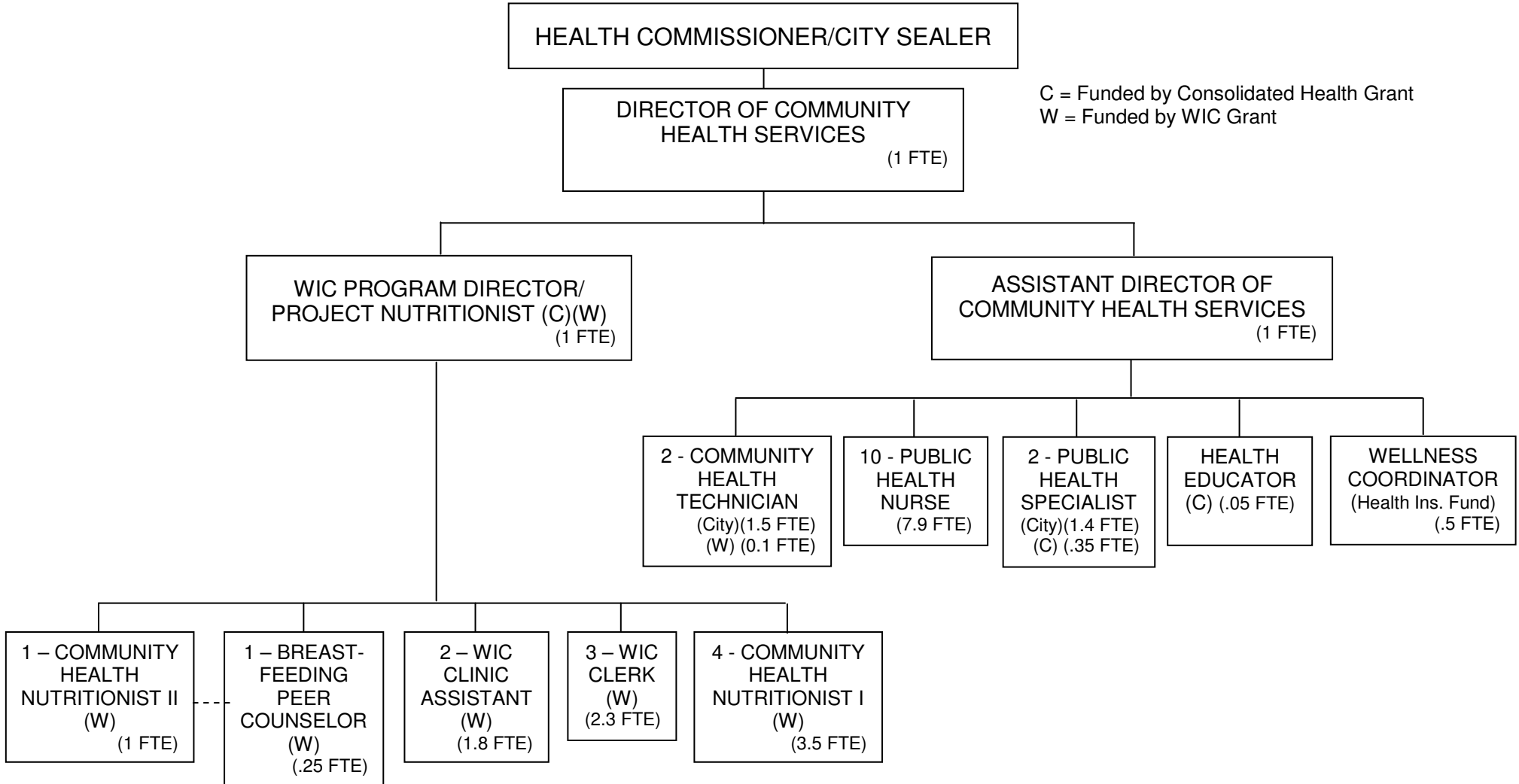


CITY FUNDED FTEs: 27.1
OTHER FUNDING SOURCES FTEs: 11.5

**ORGANIZATIONAL CHART
HEALTH
HEALTH ADMINISTRATIVE SERVICES**

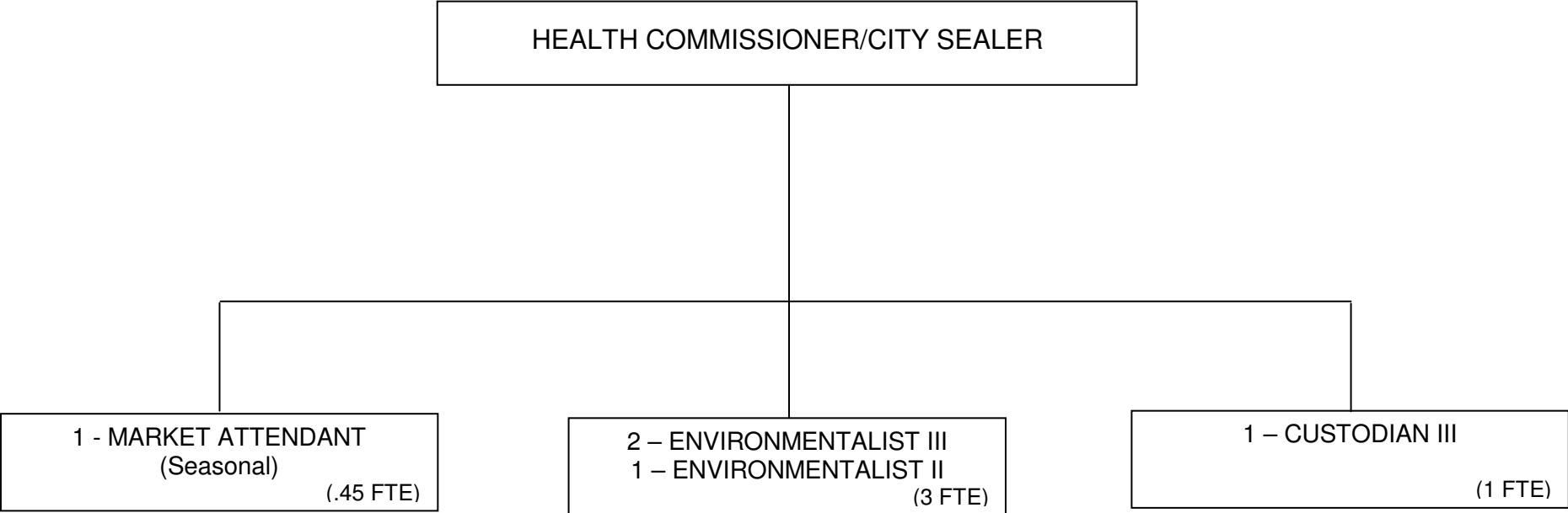


**ORGANIZATIONAL CHART
HEALTH
COMMUNITY HEALTH SERVICES**

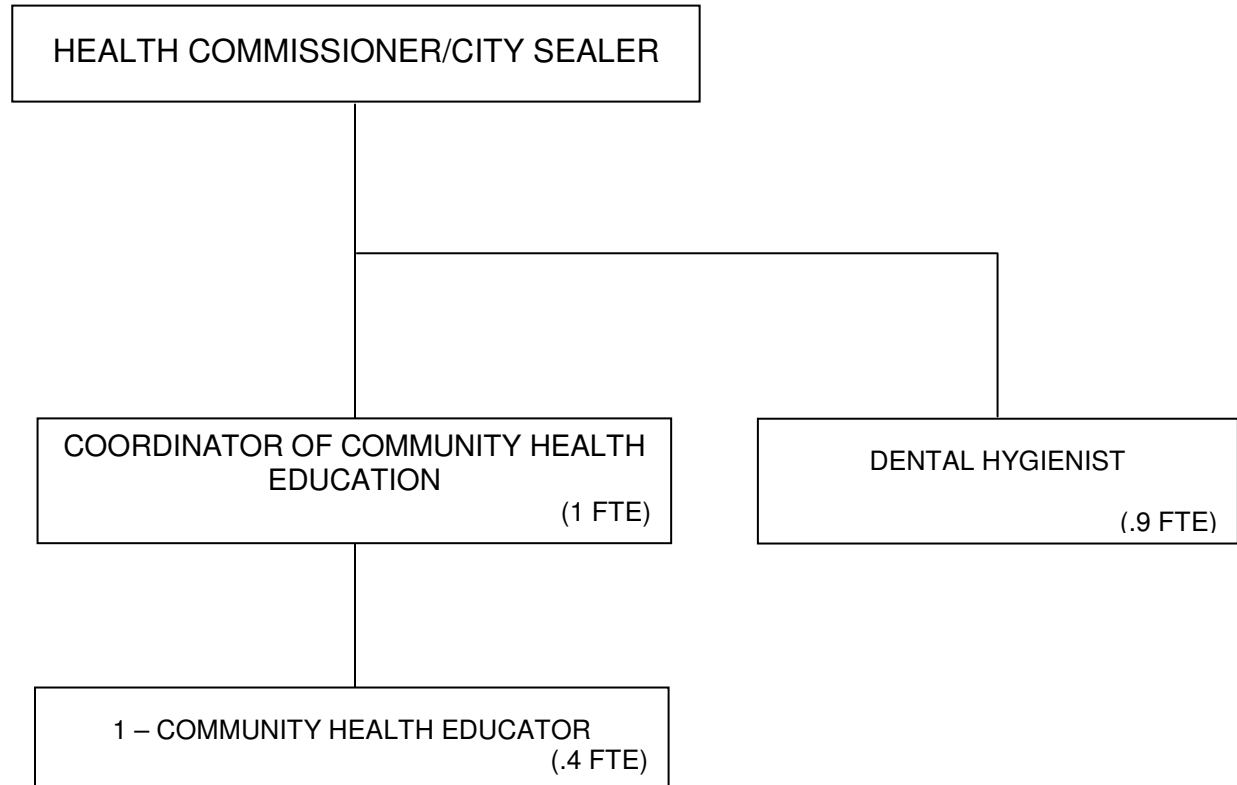


C = Funded by Consolidated Health Grant
W = Funded by WIC Grant

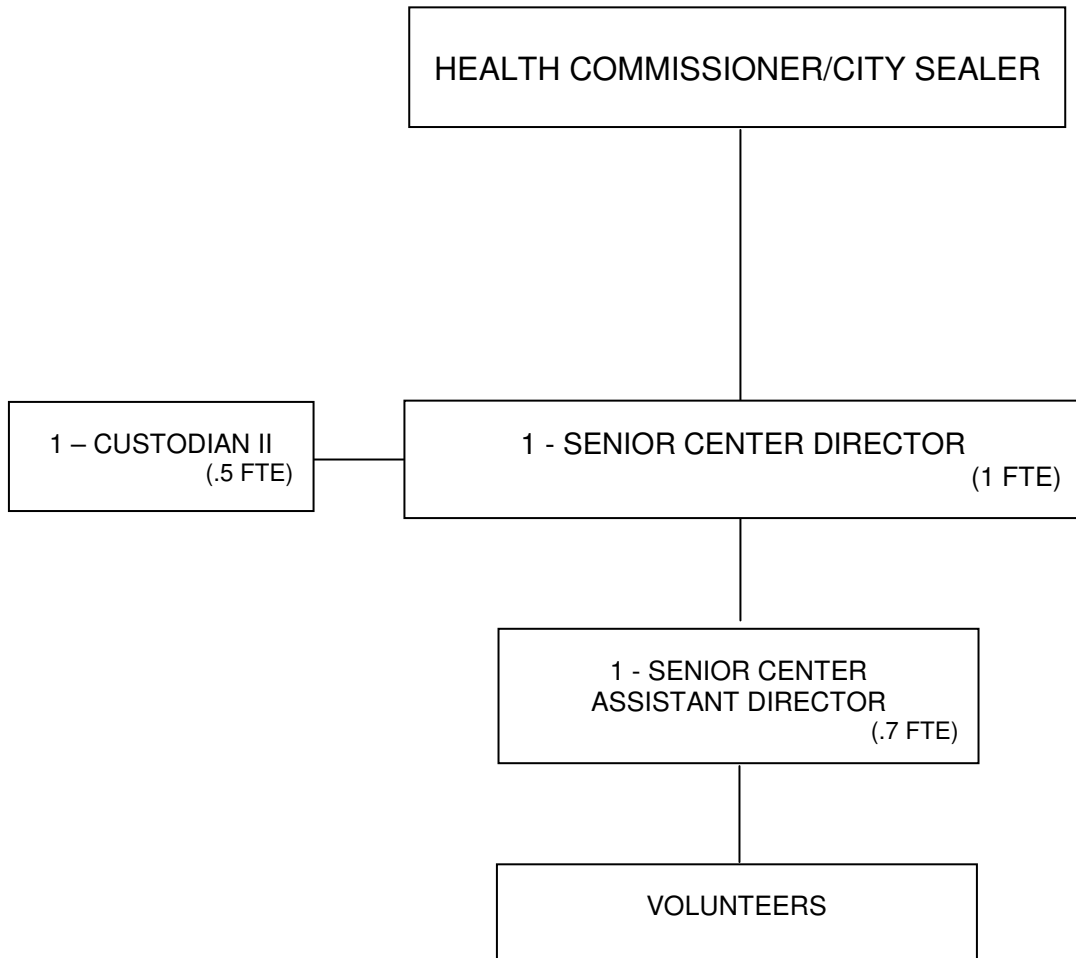
**ORGANIZATIONAL CHART
HEALTH
ENVIRONMENTAL HEALTH & CONSUMER PROTECTION**



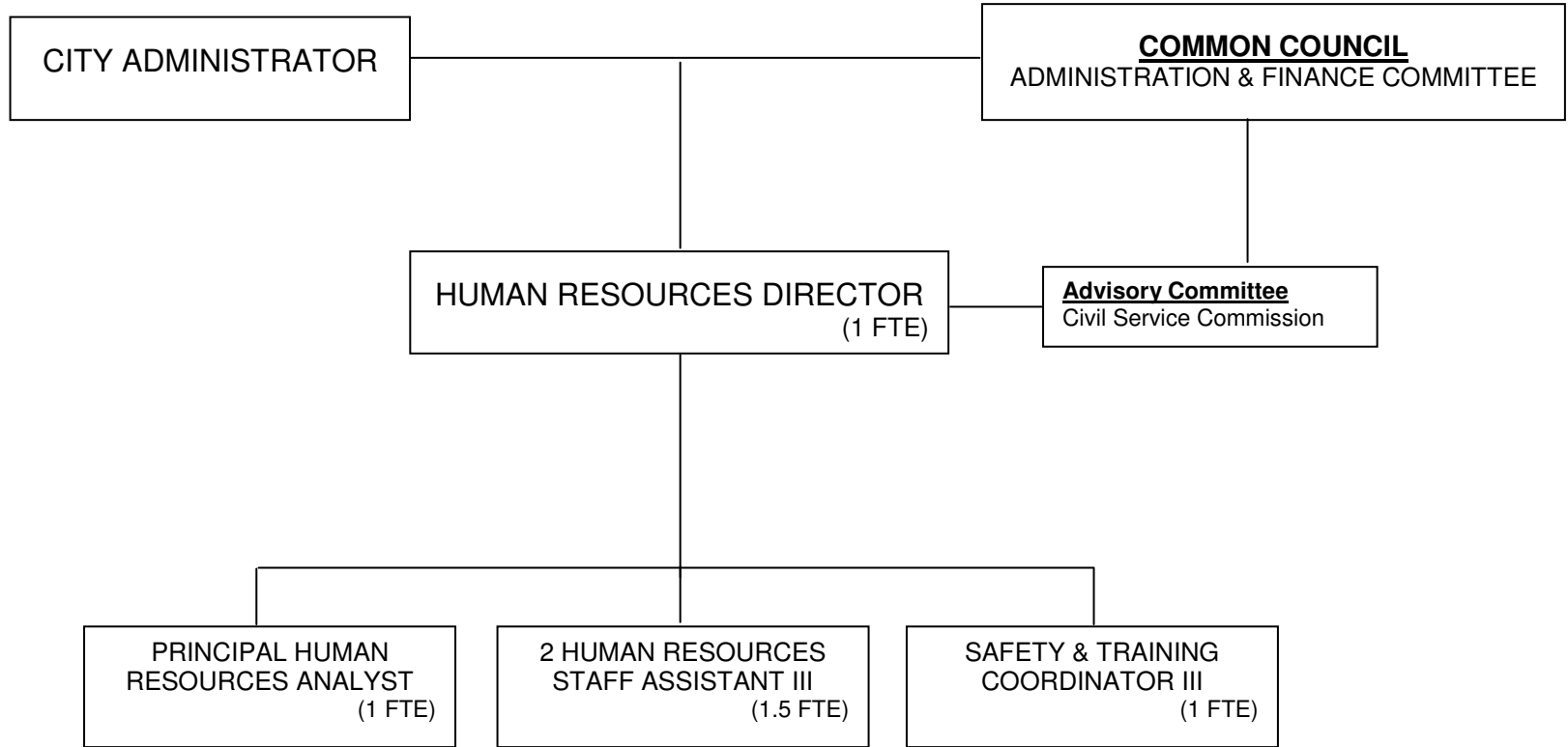
**ORGANIZATIONAL CHART
HEALTH
INTERDISCIPLINARY HEALTH SERVICES**



**ORGANIZATIONAL CHART
HEALTH
SENIOR CENTER**

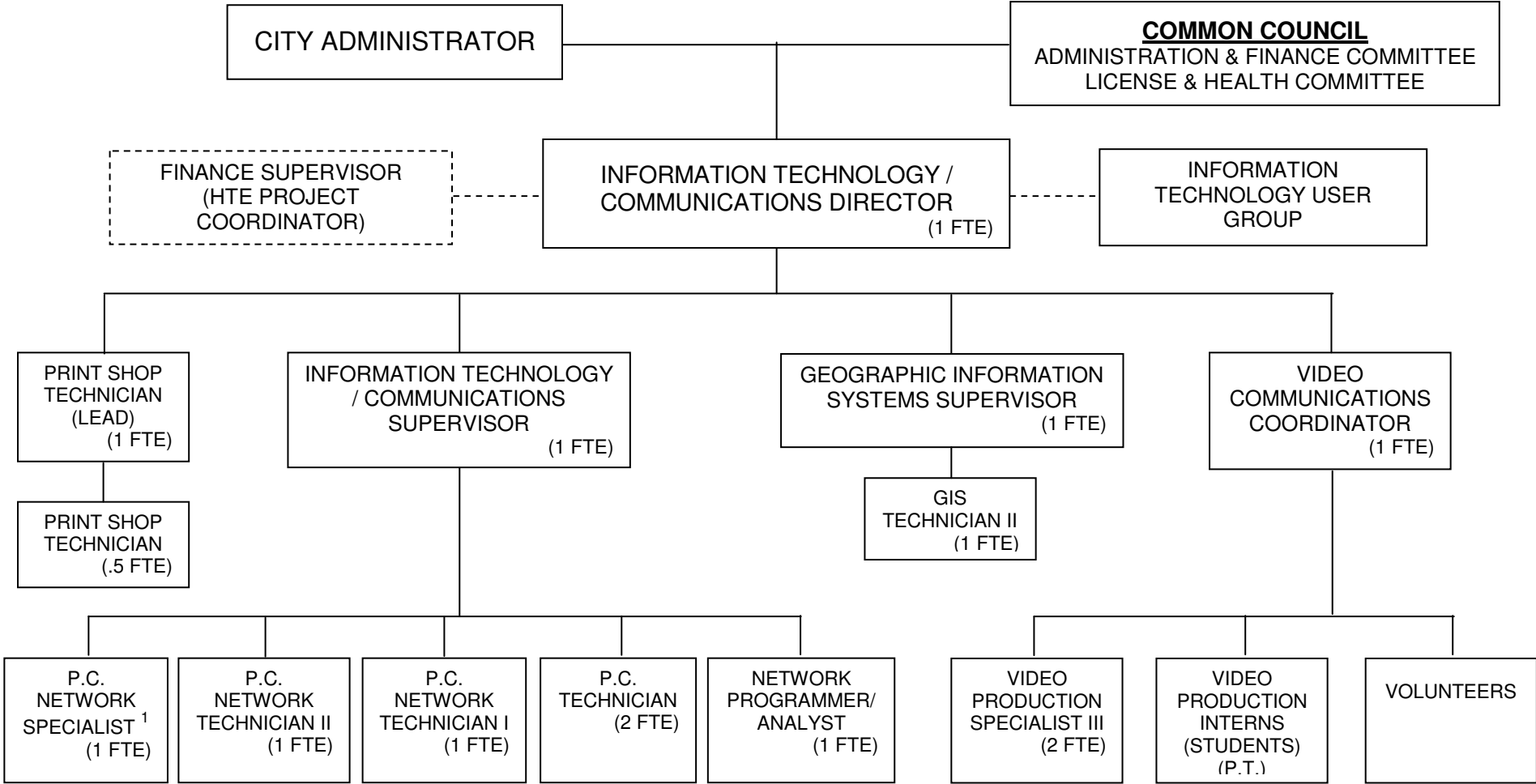


**ORGANIZATIONAL CHART
HUMAN RESOURCES**



CITY FUNDED FTEs: 4.5

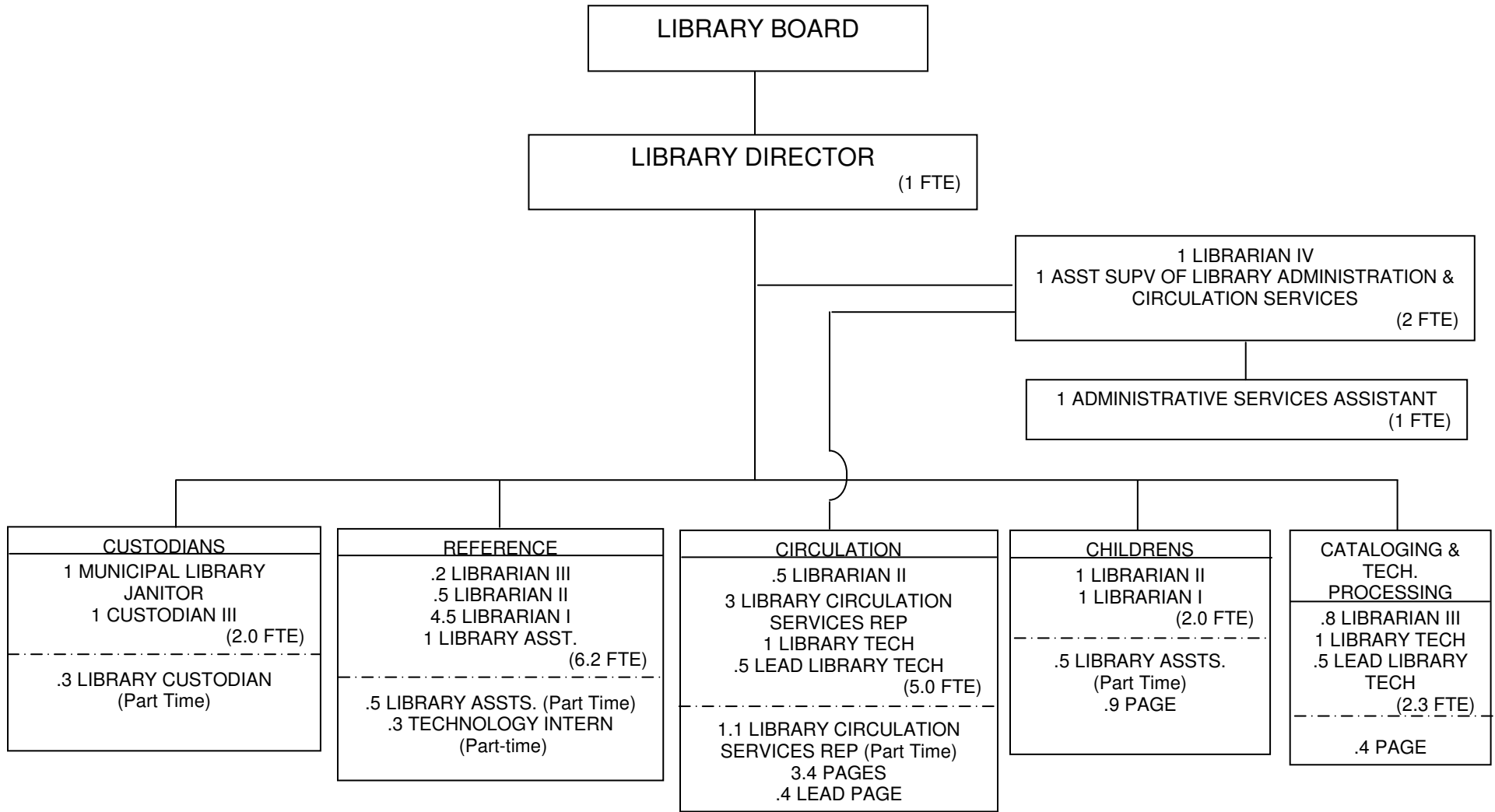
**ORGANIZATIONAL CHART
INFORMATION TECHNOLOGY / COMMUNICATIONS**



¹ 1 P.C. Network Specialist to support Police Department

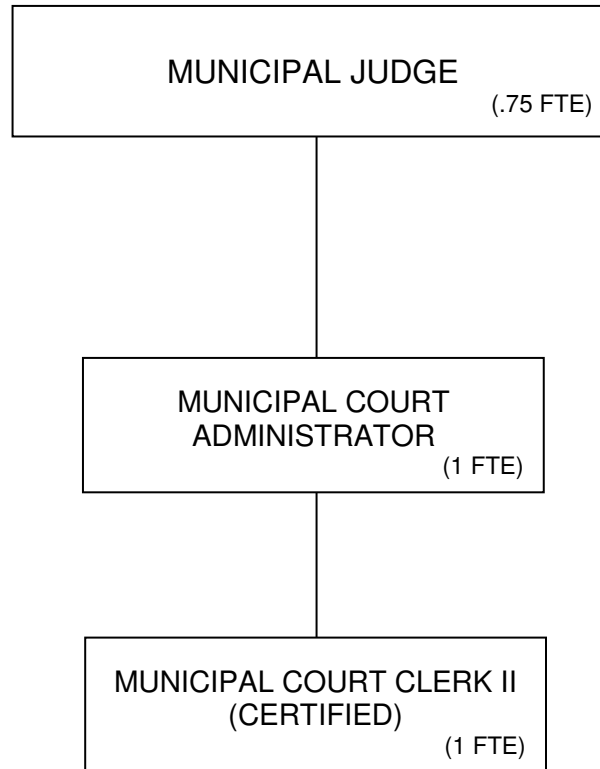
CITY FUNDED FTEs: 11.5
OTHER FUNDING SOURCES FTEs: 3.0

ORGANIZATIONAL CHART LIBRARY



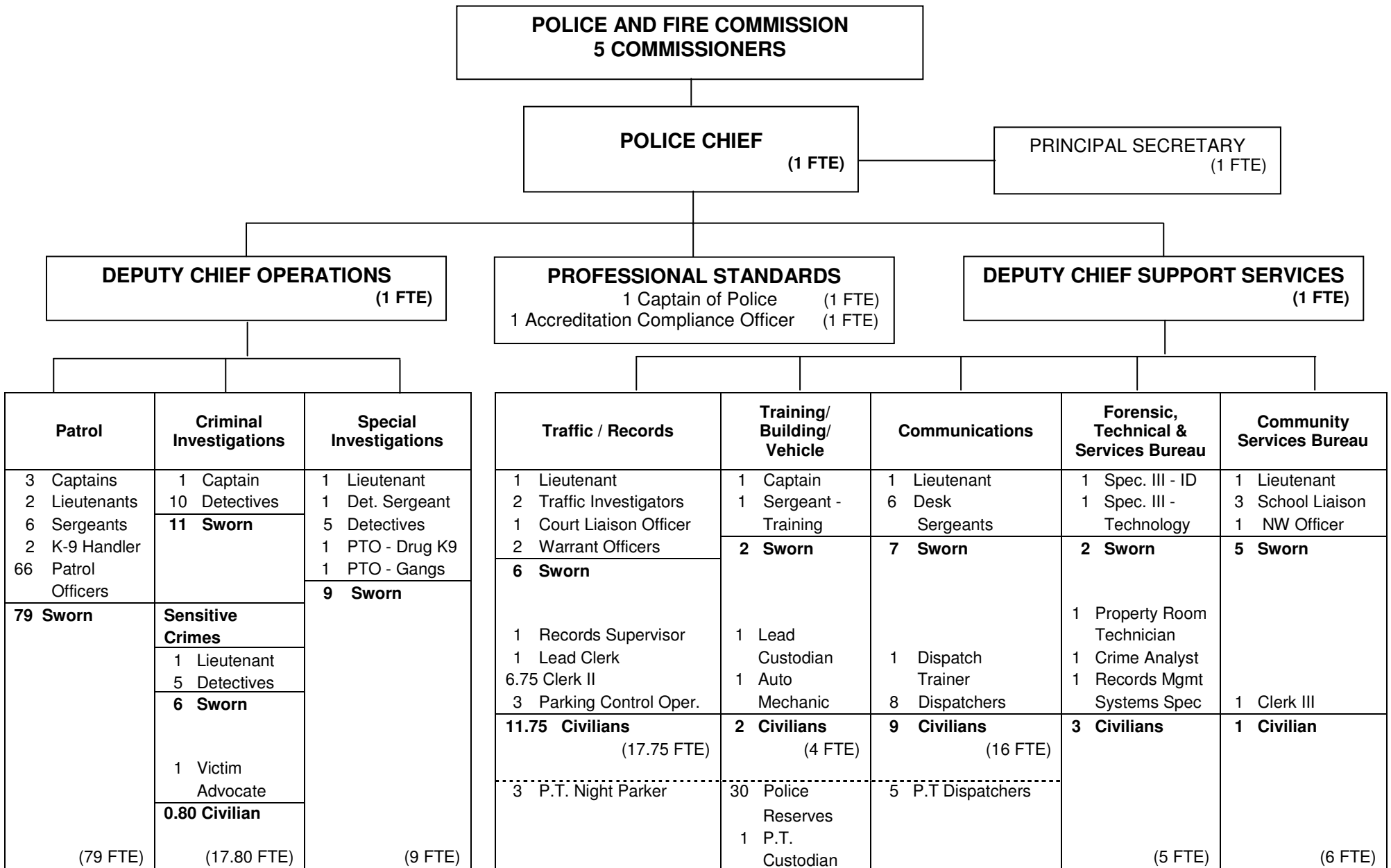
CITY FUNDED FTEs: 21.5
NON-BENEFITED (PART-TIME) FTEs: 7.8
TOTAL FTEs: 29.3

**ORGANIZATIONAL CHART
MUNICIPAL COURT**



CITY FUNDED FTEs: 2.75

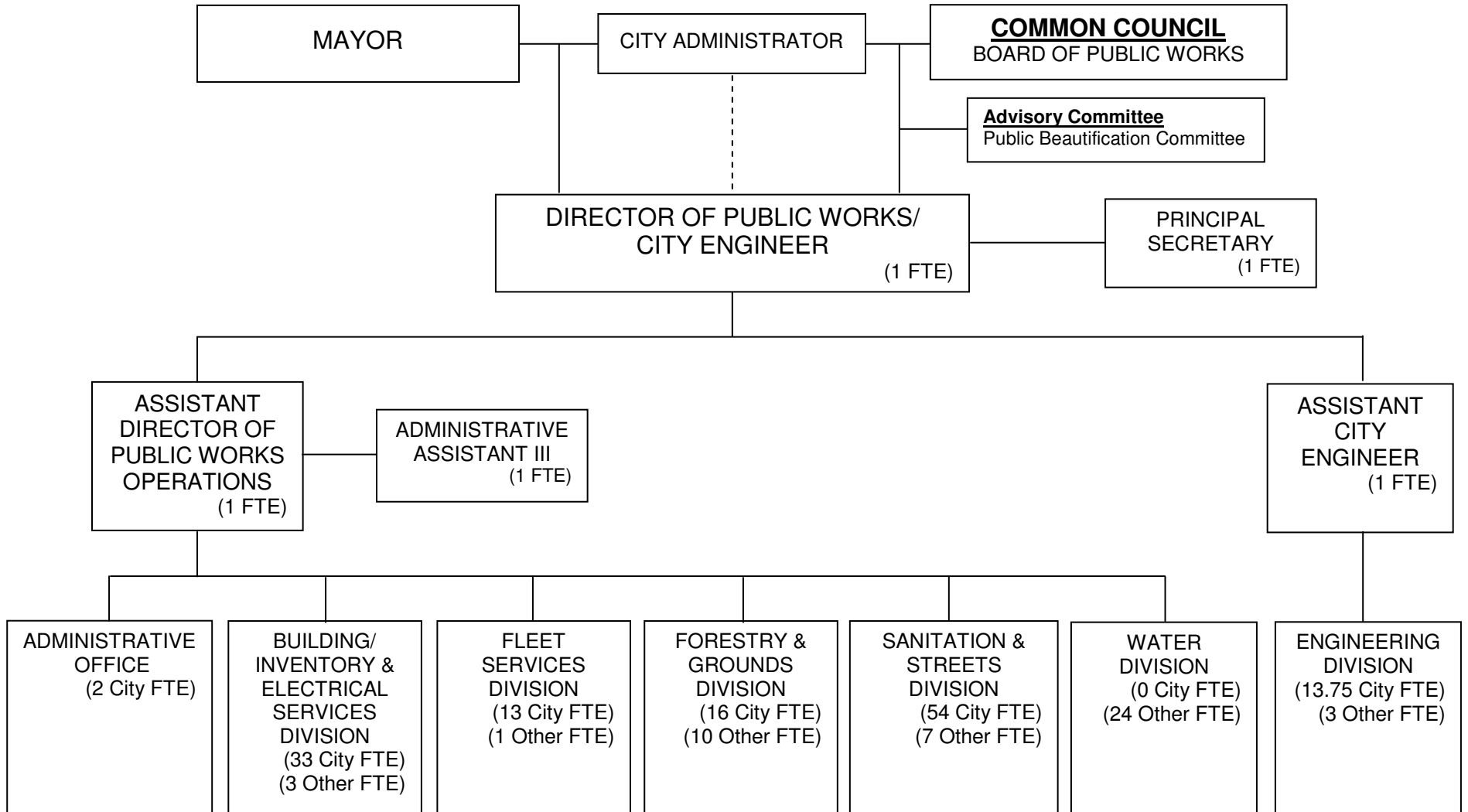
ORGANIZATIONAL CHART POLICE



Org Chart does not reflect the 11 part time and temporary positions (Community Aides, Dispatchers, Night Parker Takers, Part-time Cleaner, and Clerks) as needed.

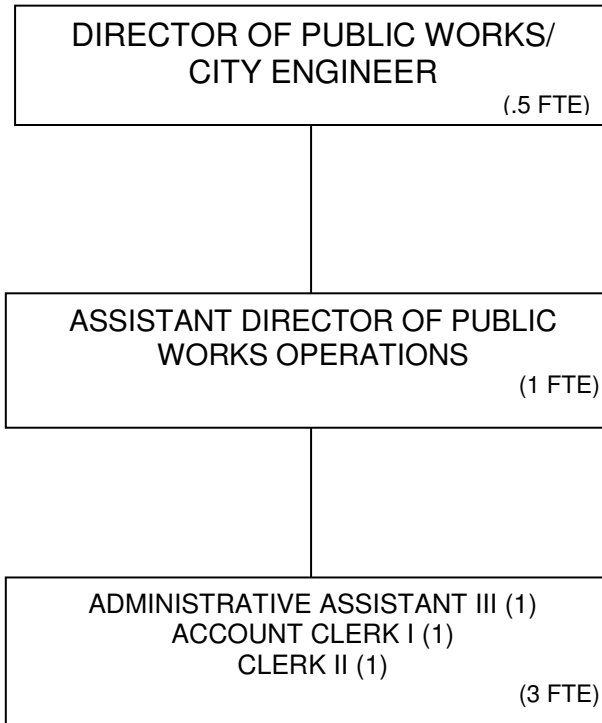
132	Sworn Employees
28.55	Civilians
160.55	Total Employees

ORGANIZATIONAL CHART PUBLIC WORKS / ENGINEERING



CITY FUNDED FTEs: 136.75
OTHER FUNDING SOURCES FTEs: 48

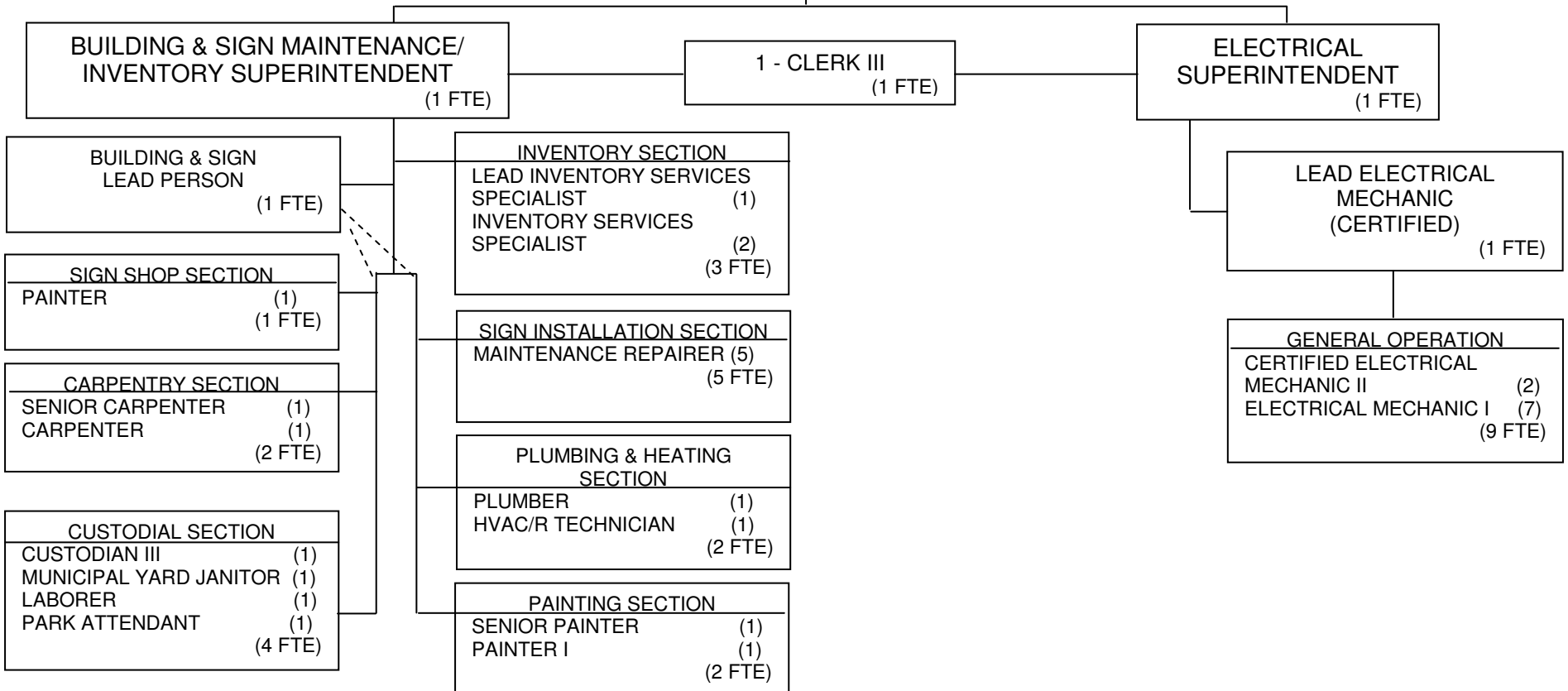
**ORGANIZATIONAL CHART
PUBLIC WORKS / ENGINEERING
ADMINISTRATIVE OFFICE**



**ORGANIZATIONAL CHART
PUBLIC WORKS / ENGINEERING
BUILDING / INVENTORY & ELECTRICAL SERVICES**

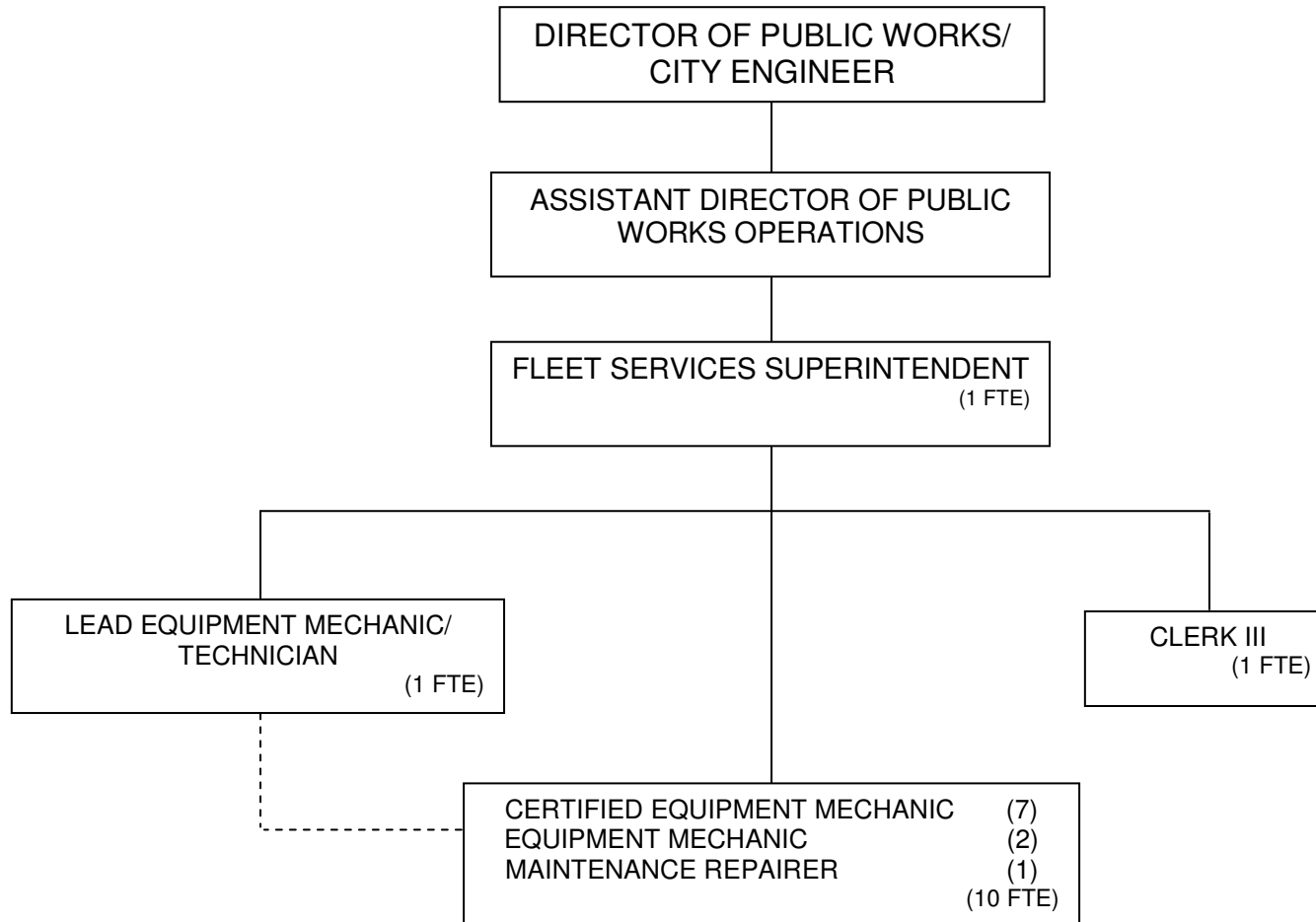
DIRECTOR OF PUBLIC WORKS/
CITY ENGINEER

ASSISTANT DIRECTOR OF PUBLIC
WORKS OPERATIONS



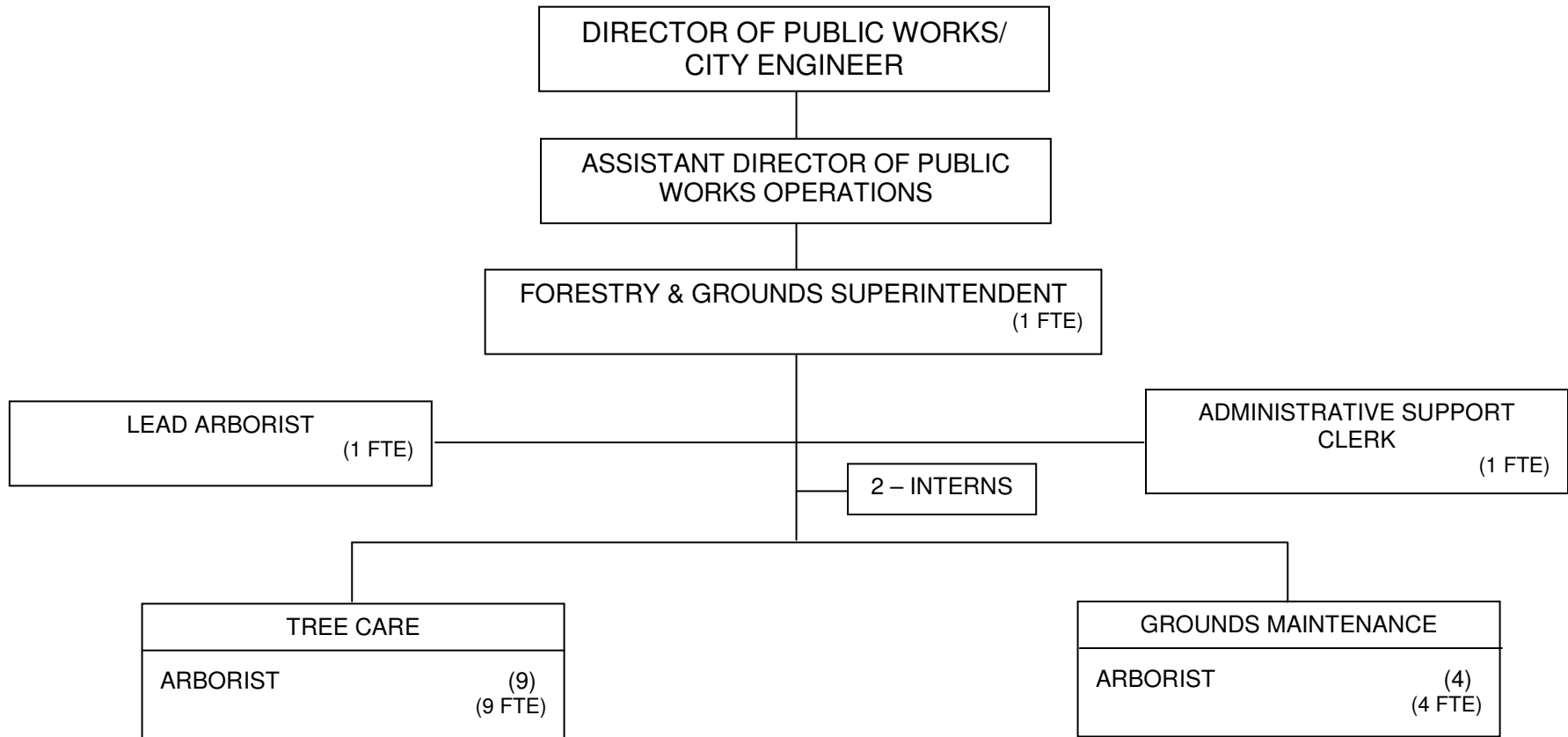
Org Chart does not reflect the seasonal temporary laborer positions.

**ORGANIZATIONAL CHART
PUBLIC WORKS / ENGINEERING
FLEET SERVICES**



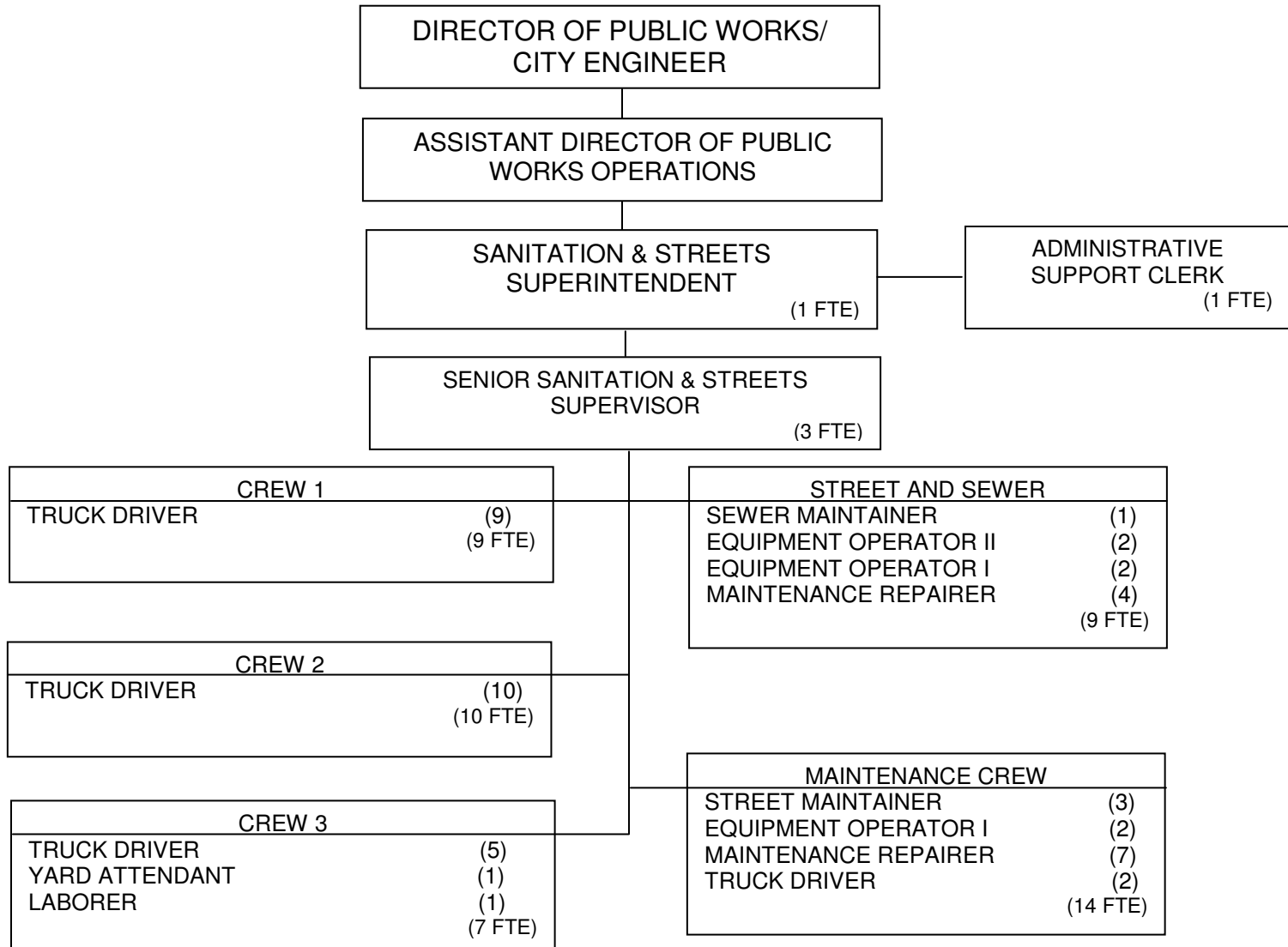
Org Chart does not reflect the seasonal temporary laborer positions.

**ORGANIZATIONAL CHART
PUBLIC WORKS / ENGINEERING
FORESTRY & GROUNDS**



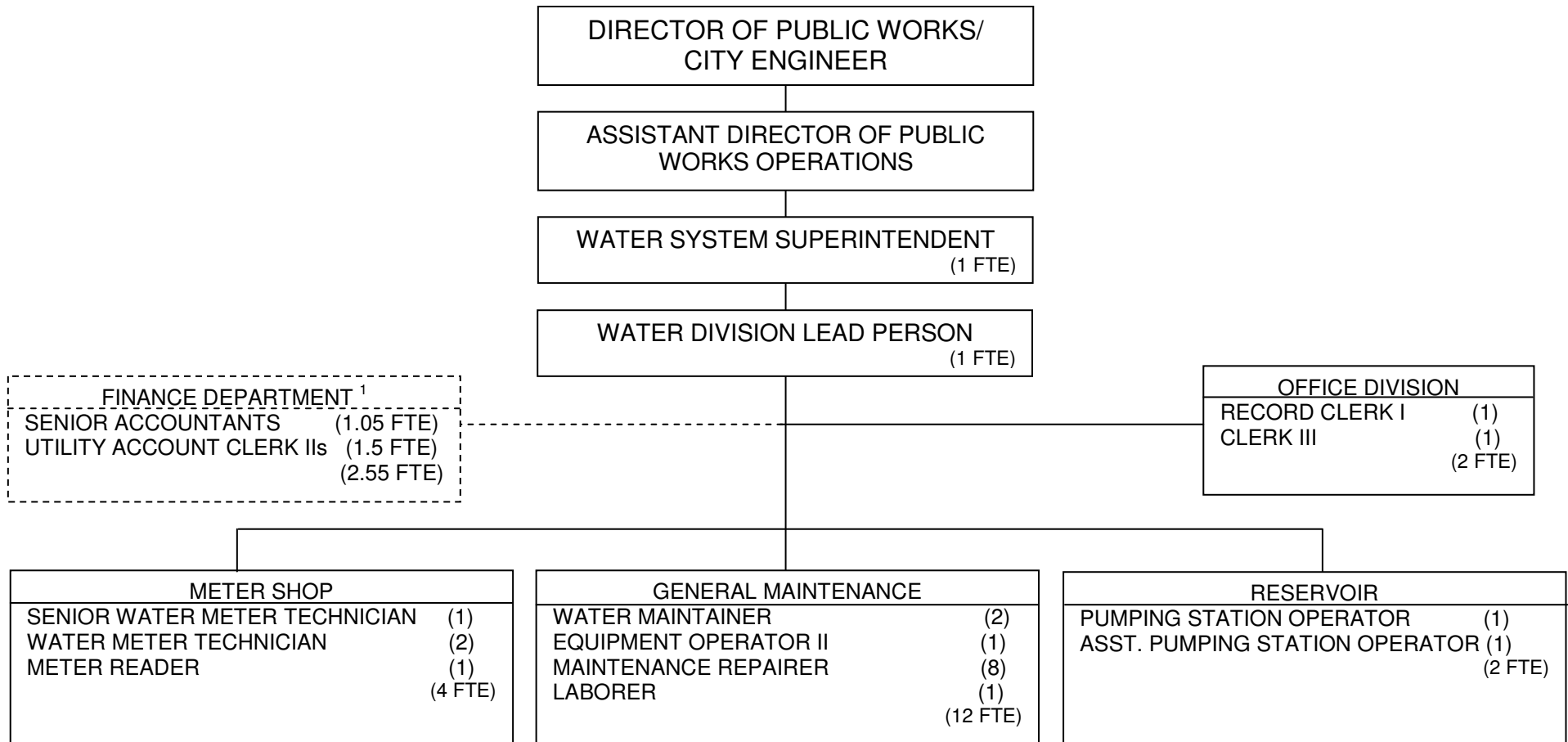
Org Chart does not reflect the seasonal temporary laborer positions.

**ORGANIZATIONAL CHART
PUBLIC WORKS / ENGINEERING
SANITATION & STREETS**



Org Chart does not reflect the seasonal temporary laborer positions.

**ORGANIZATIONAL CHART
PUBLIC WORKS / ENGINEERING
WATER**



¹ These positions are in the Public Works Water Division Budget but are under the direction of the Finance Department.

NOTE: Other personnel working in support of the Water Utility (A&F, Treasurer, PW, IT) are also funded by the Water Utility, but are not included on this chart. Further, some of the positions reflected above on this chart also perform work funded by other Utility Budgets (Sanitary, Storm, etc.).

**ORGANIZATIONAL CHART
PUBLIC WORKS/ENGINEERING
ENGINEERING**

