

City of West Allis



Organizational Chart

2014

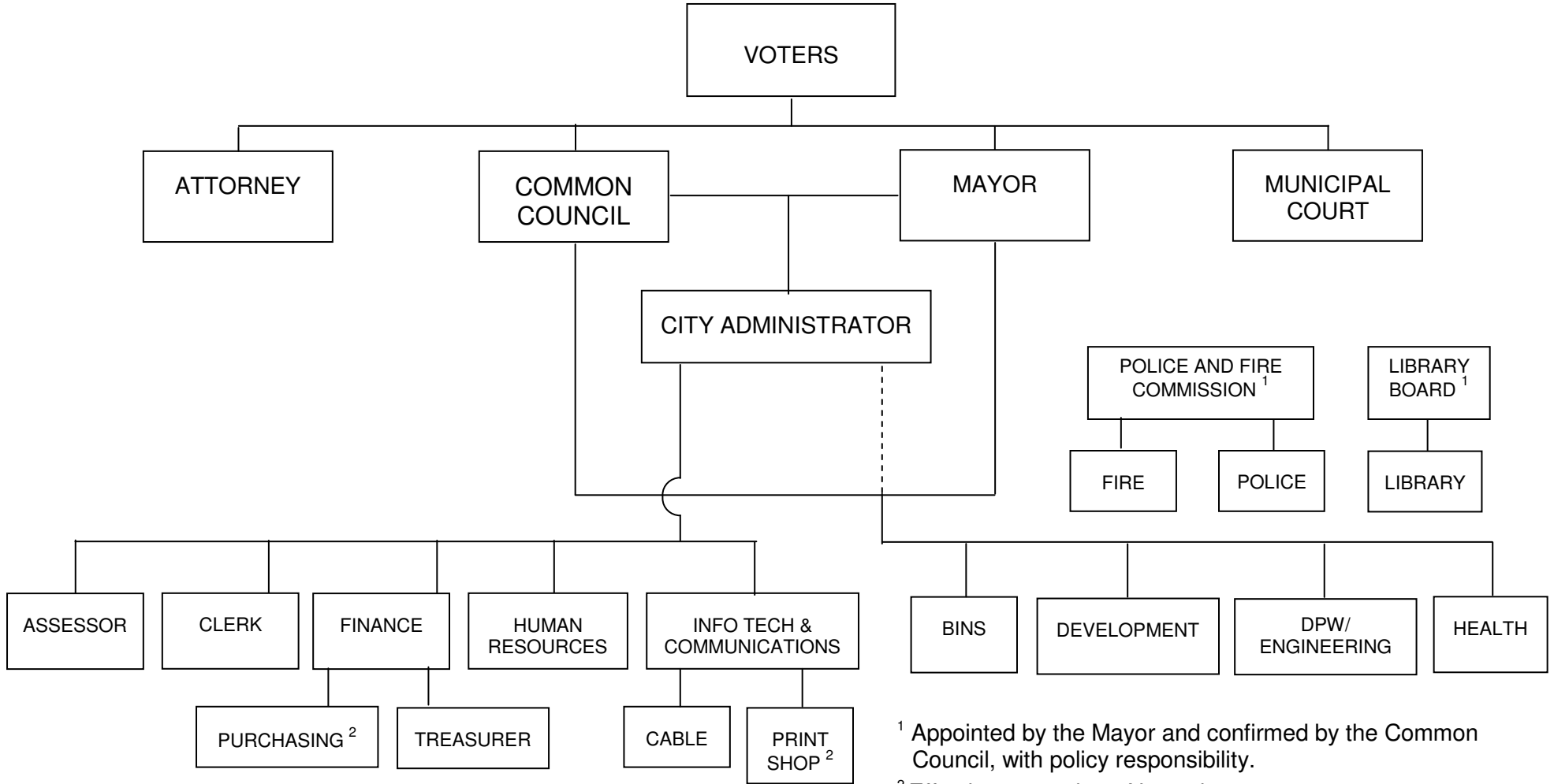
ORGANIZATIONAL CHARTS

January 1, 2014

	<u>Page</u>
City of West Allis.....	1
Council Policy Committees.....	2
Advisory Committees.....	3
Mayor	4
Assessor.....	5
Attorney	6
Building Inspections & Neighborhood Services	7
City Administrator	8
Clerk	9
Development	10
Community Development	11
Planning and Zoning.....	12
Finance / Purchasing / Treasurer	13
Purchasing / Central Services.....	14
Fire	15
Health.....	16
Health Administrative Services	17
Community Health Services	18
Environmental Health & Consumer Protection	19
Interdisciplinary Health Services.....	20
Senior Center	21
Human Resources.....	22
Information Technology / Communications	23
Library	24

	<u>Page</u>
Municipal Court.....	25
Police.....	26
Public Works / Engineering.....	27
Administrative Office.....	28
Building / Inventory and Electrical Services.....	29
Fleet Services.....	30
Forestry & Grounds.....	31
Sanitation & Streets.....	32
Water.....	33
Engineering.....	34

**ORGANIZATIONAL CHART
CITY OF WEST ALLIS**

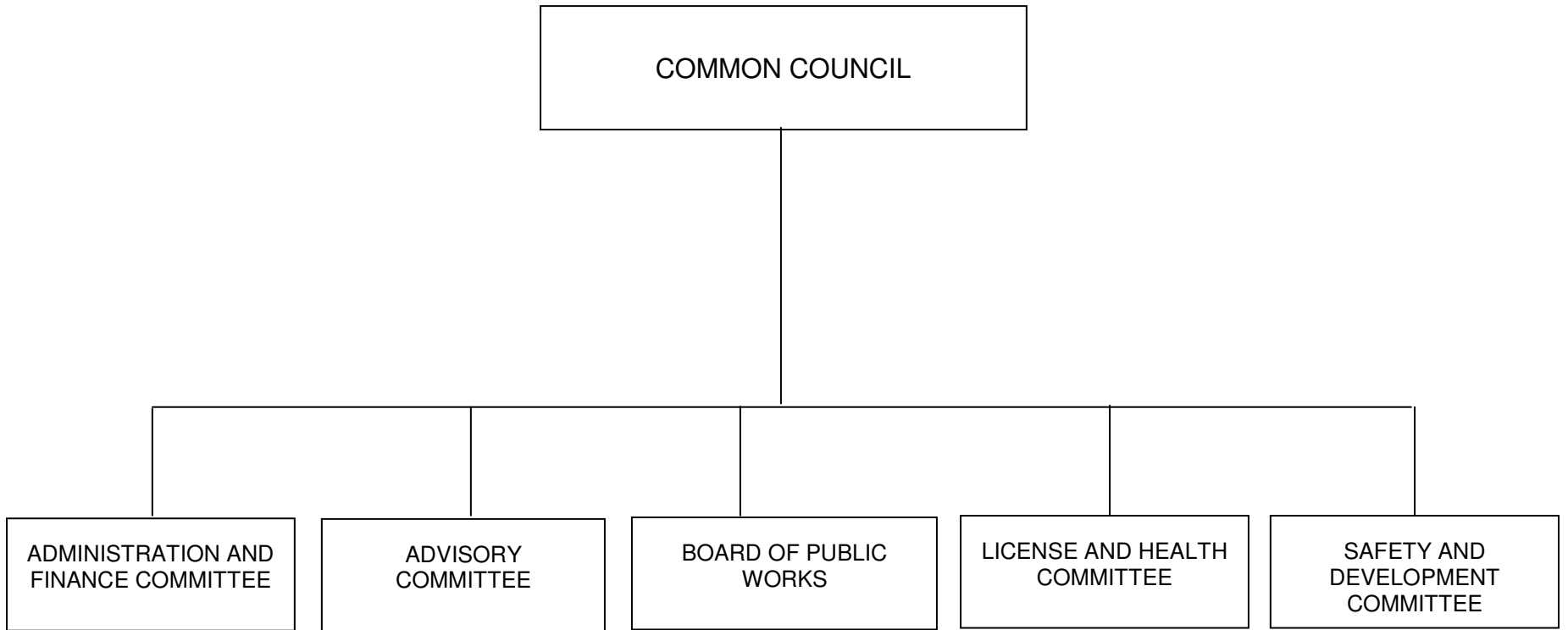


¹ Appointed by the Mayor and confirmed by the Common Council, with policy responsibility.
² Effective on or about November 1, 2014
³ Authorization includes one Fire position not listed.

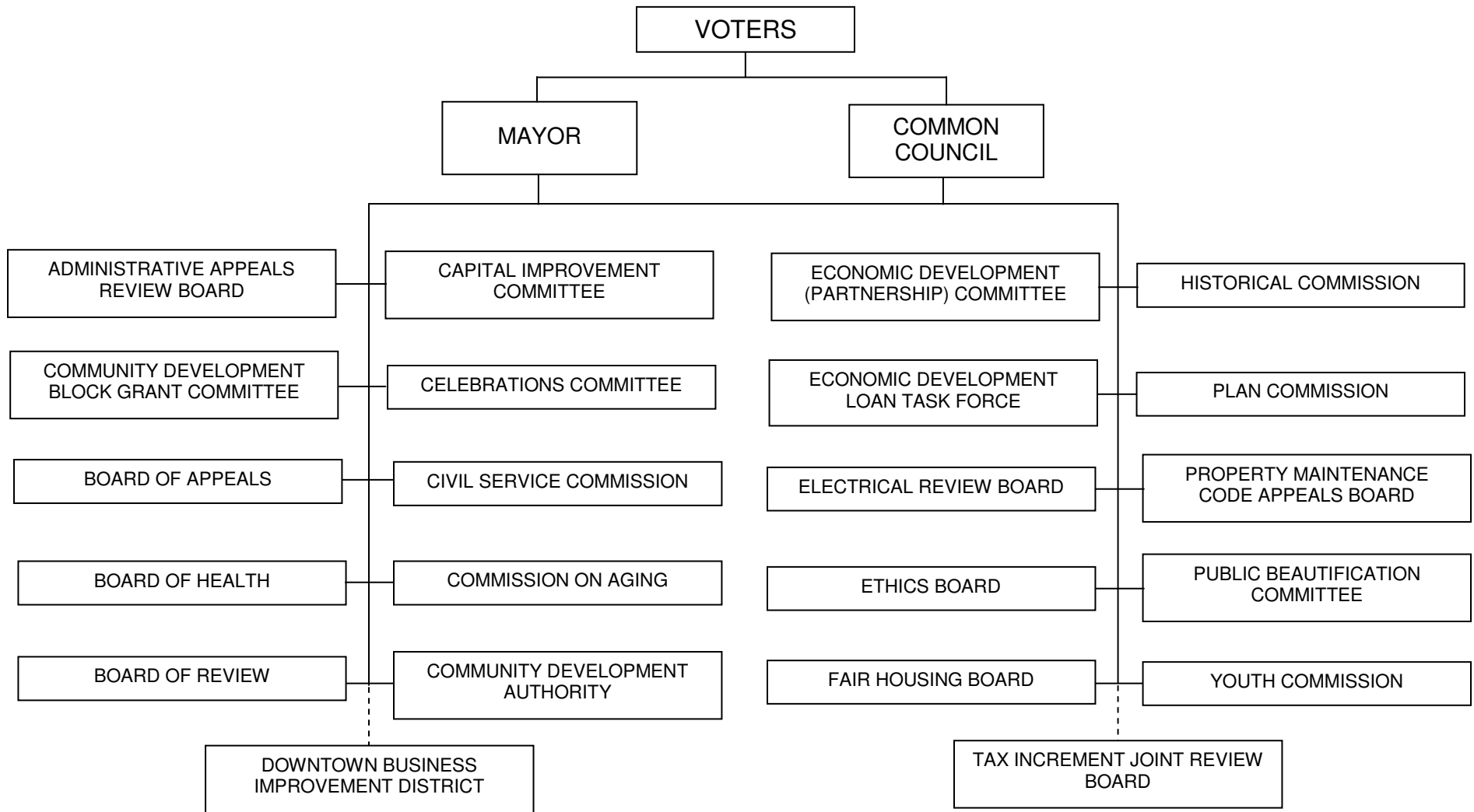
NOTE: Solid lines indicate lines of policy and program authority; dashed lines indicate lines of administrative and financial authority.

Regular positions for 2014 budget: 515.53³ City FTE (per budget)

**ORGANIZATIONAL CHART
COUNCIL POLICY COMMITTEES**

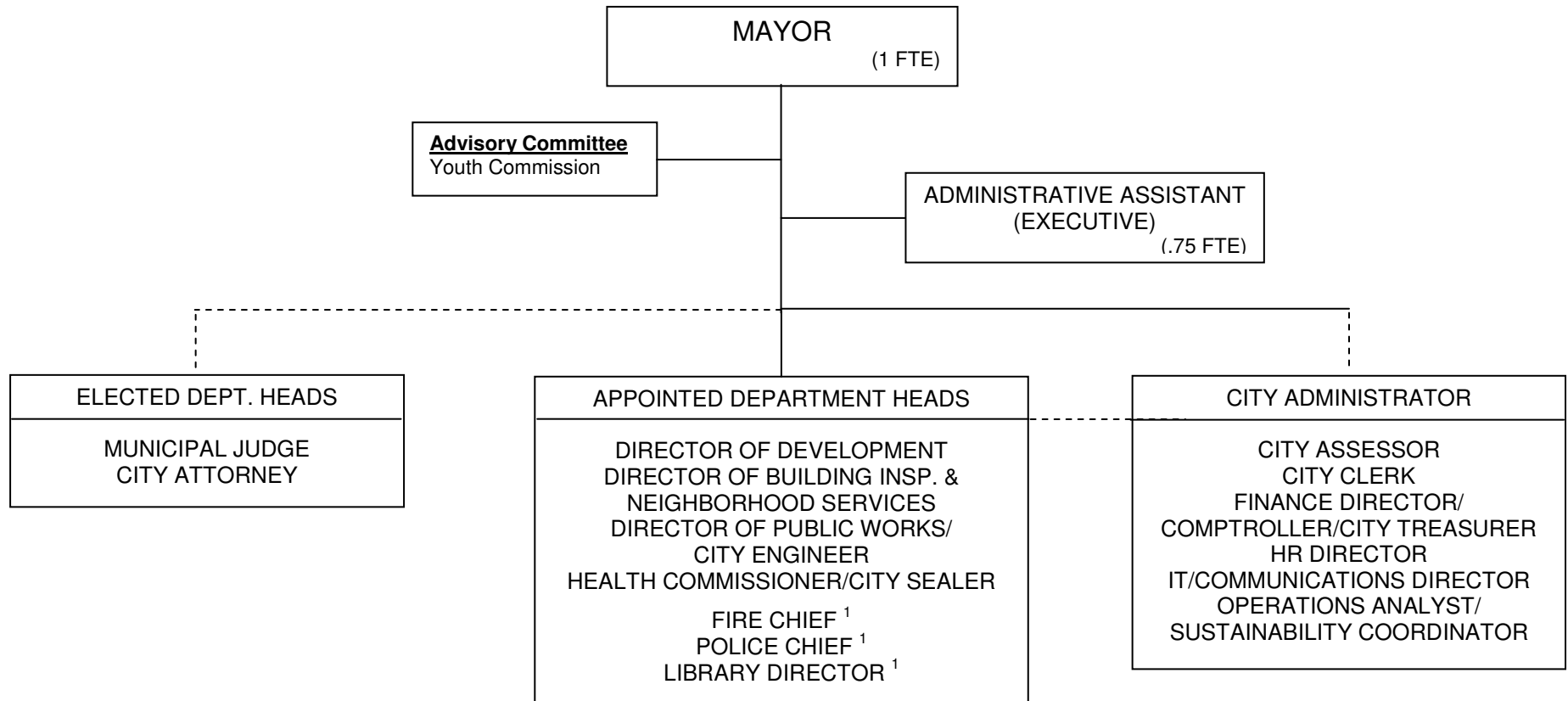


ORGANIZATIONAL CHART ADVISORY COMMITTEES



Advisory Committee members are appointed by the Mayor and confirmed by the Common Council.

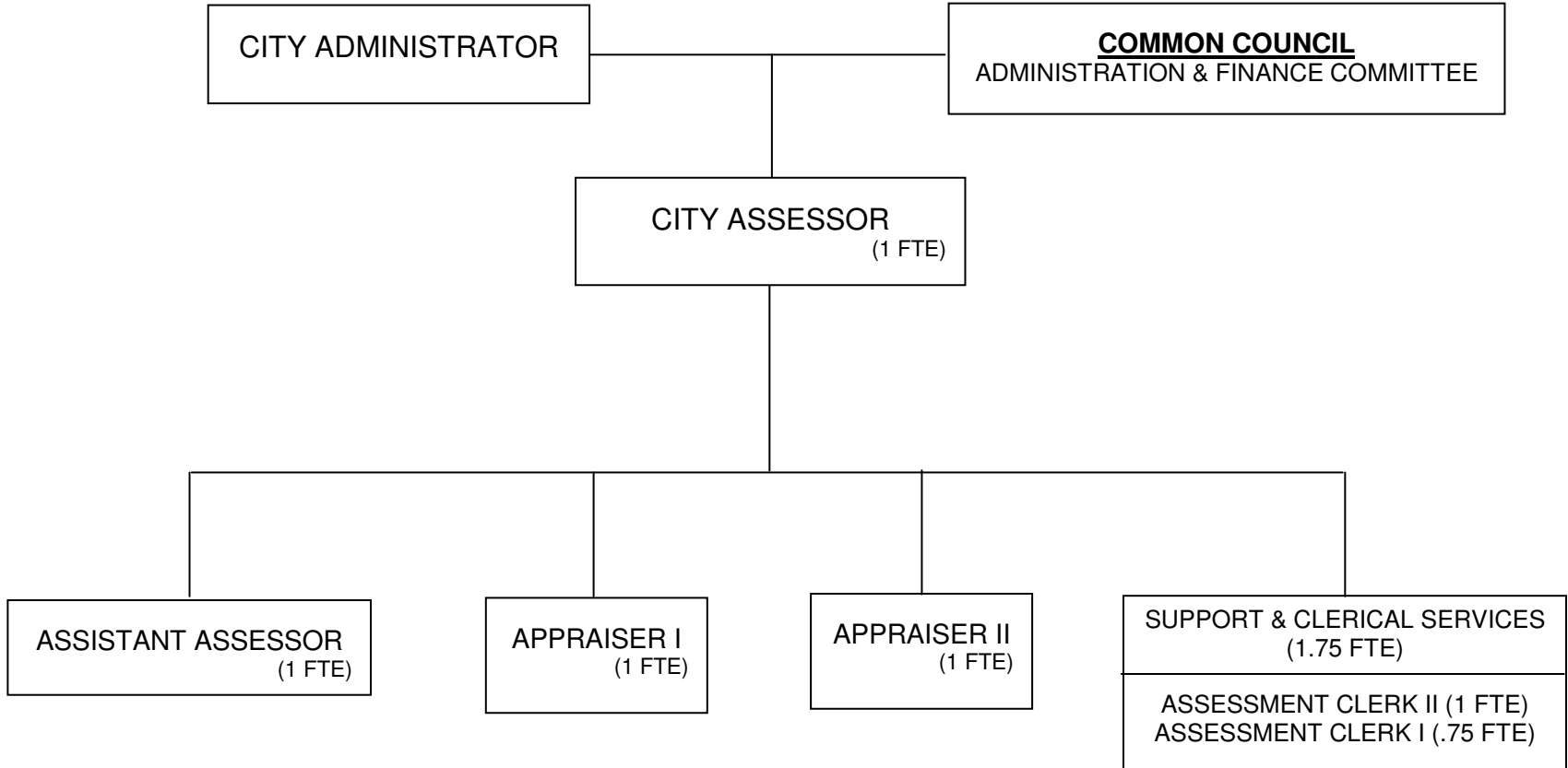
**ORGANIZATIONAL CHART
MAYOR**



¹ Reports directly to Police & Fire Commission and Library Board respectively.

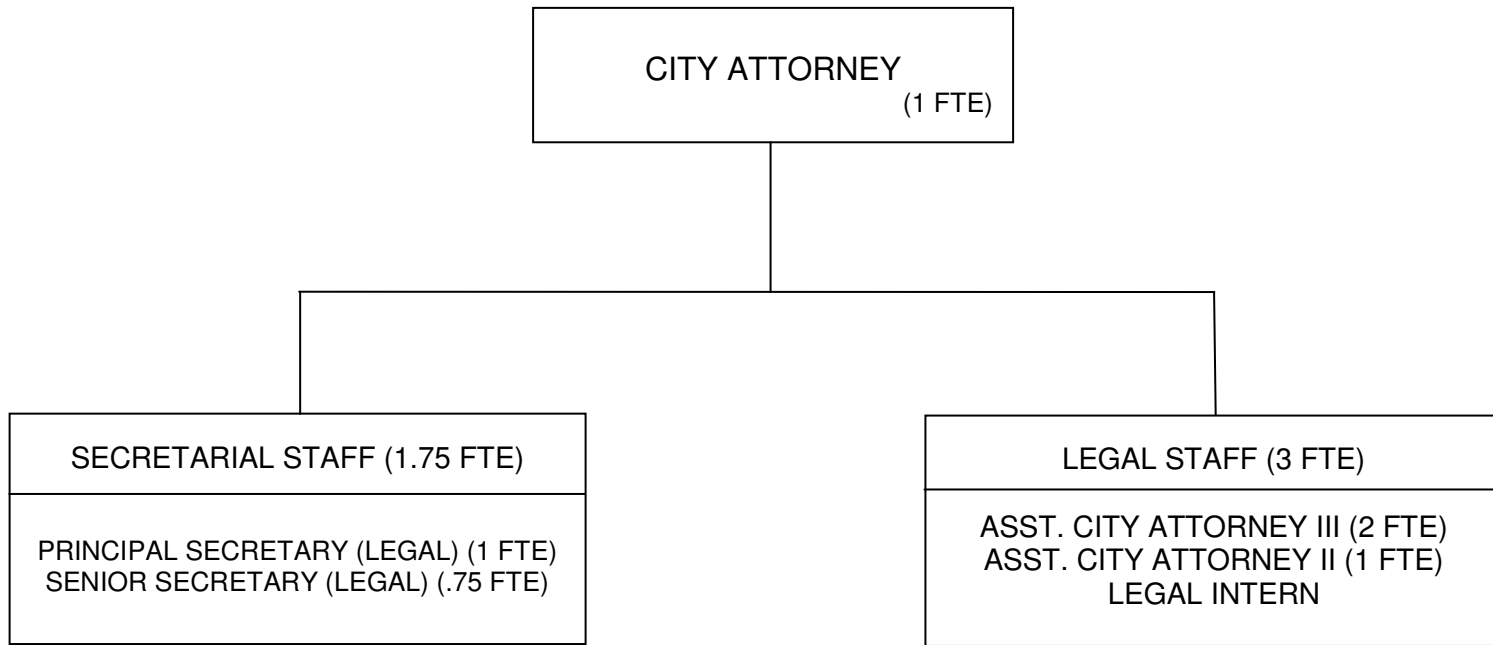
TOTAL POSITIONS: 2 (1.25 City FTE)

**ORGANIZATIONAL CHART
ASSESSOR**



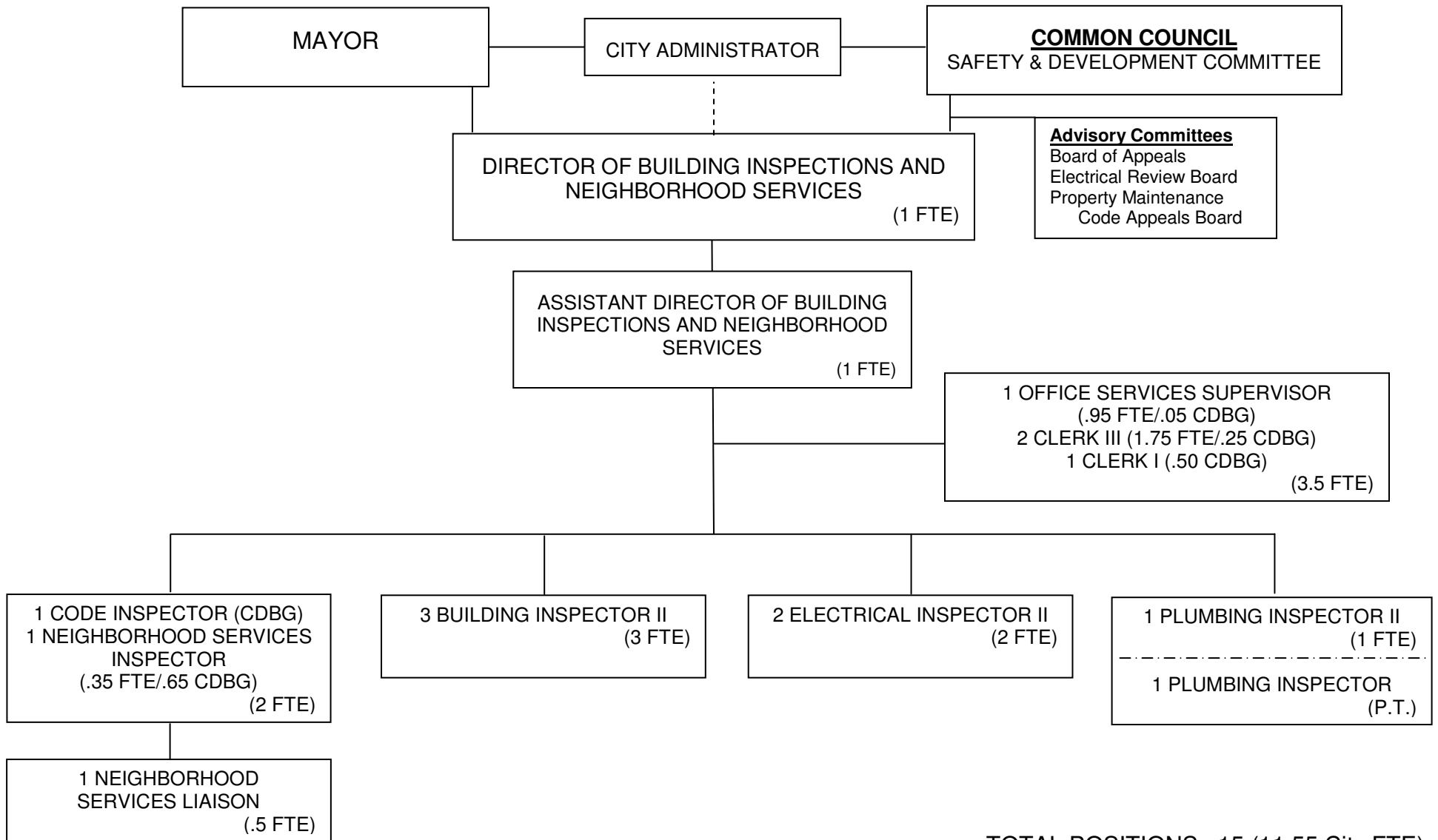
TOTAL POSITIONS: 6 (5.75 City FTE)

**ORGANIZATIONAL CHART
ATTORNEY**



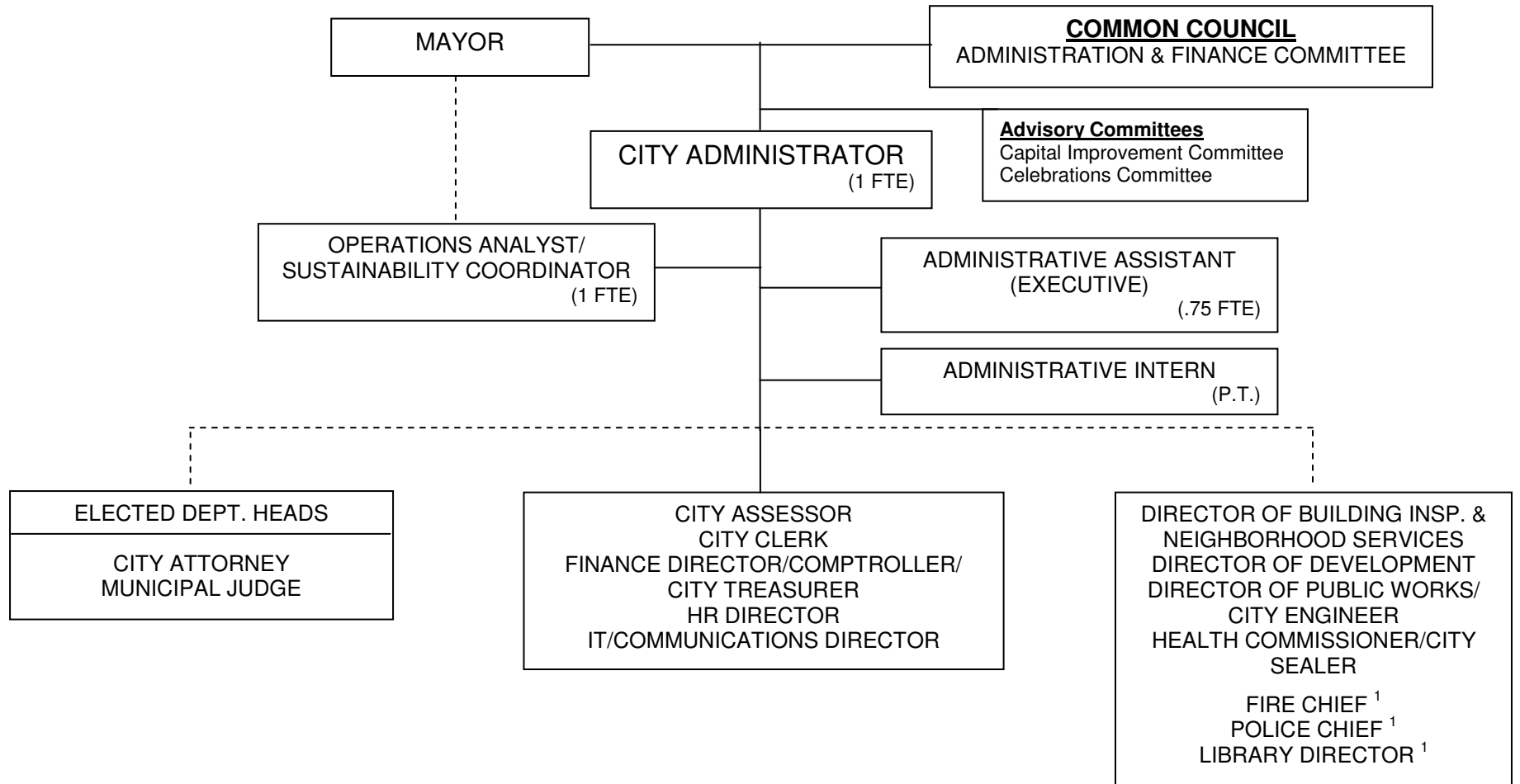
TOTAL POSITIONS: 6 (5.75 City FTE)

**ORGANIZATIONAL CHART
BUILDING INSPECTIONS AND NEIGHBORHOOD SERVICES**



TOTAL POSITIONS: 15 (11.55 City FTE)

**ORGANIZATIONAL CHART
CITY ADMINISTRATOR**

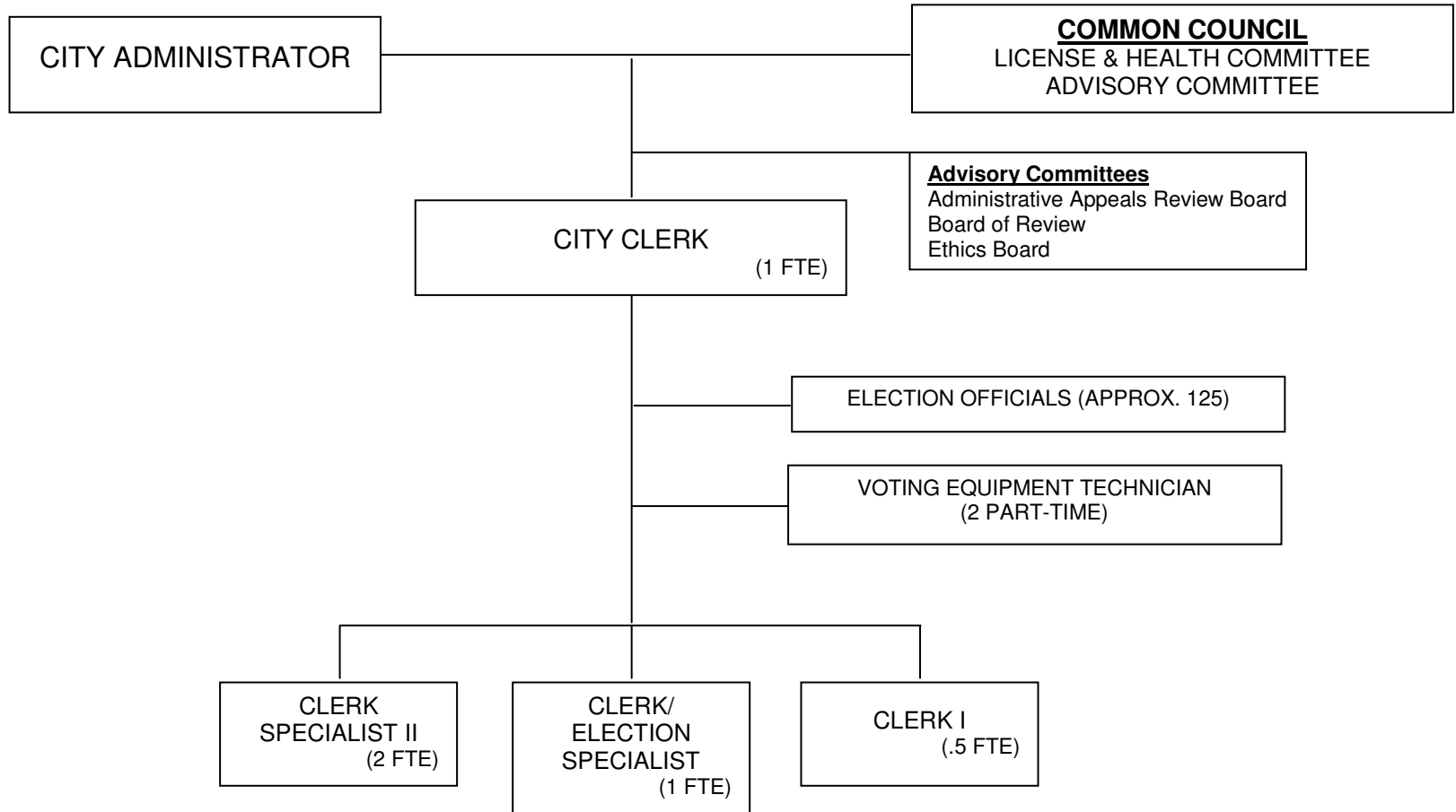


¹ Reports directly to Police & Fire Commission and Library Board respectively.

Note: Solid lines indicate lines of policy and program authority; dashed lines indicate lines of administrative and financial authority.

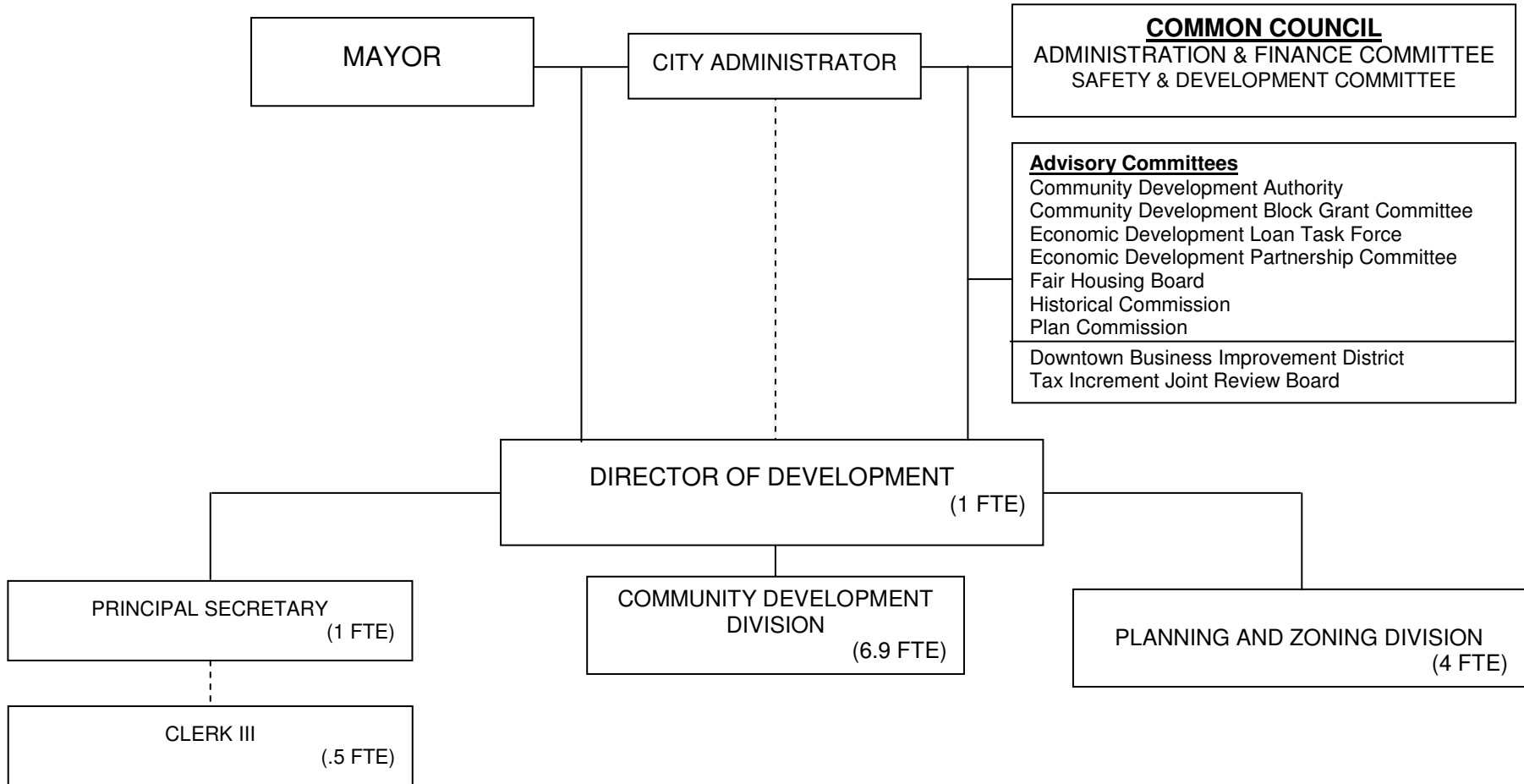
TOTAL POSITIONS: 3 (2.75 City FTE)

**ORGANIZATIONAL CHART
CLERK**



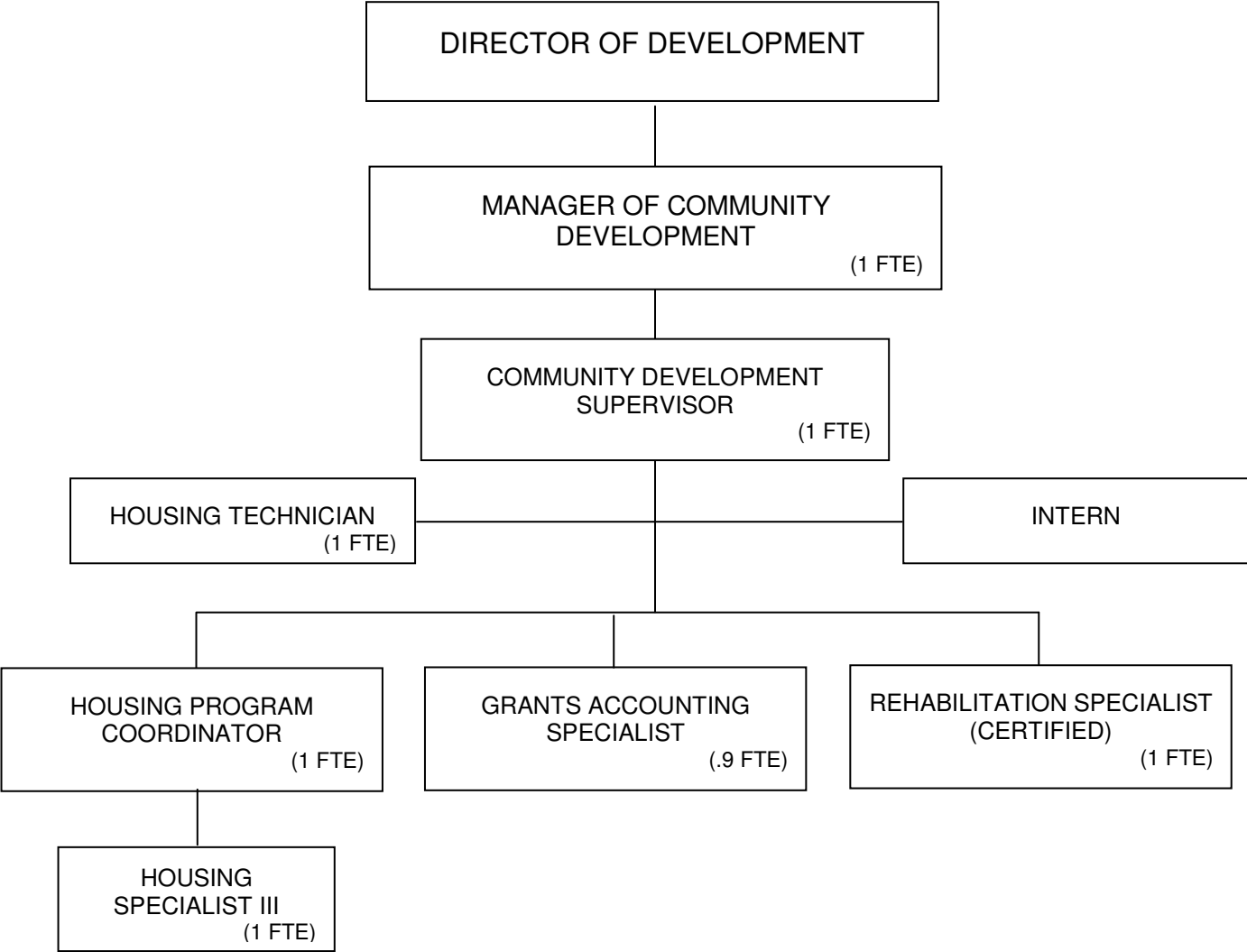
TOTAL POSITIONS: 5 (4.5 City FTE)

ORGANIZATIONAL CHART DEVELOPMENT



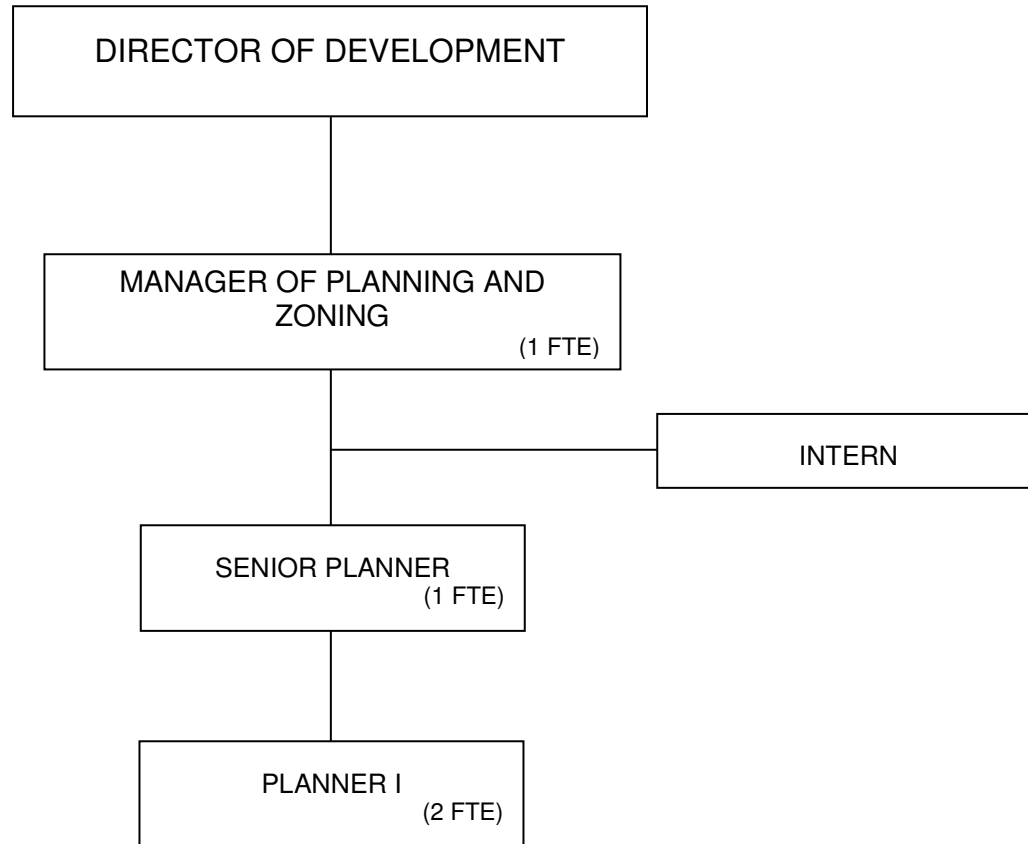
TOTAL POSITIONS: 14 (3.03 City FTE)

**ORGANIZATIONAL CHART
COMMUNITY DEVELOPMENT**



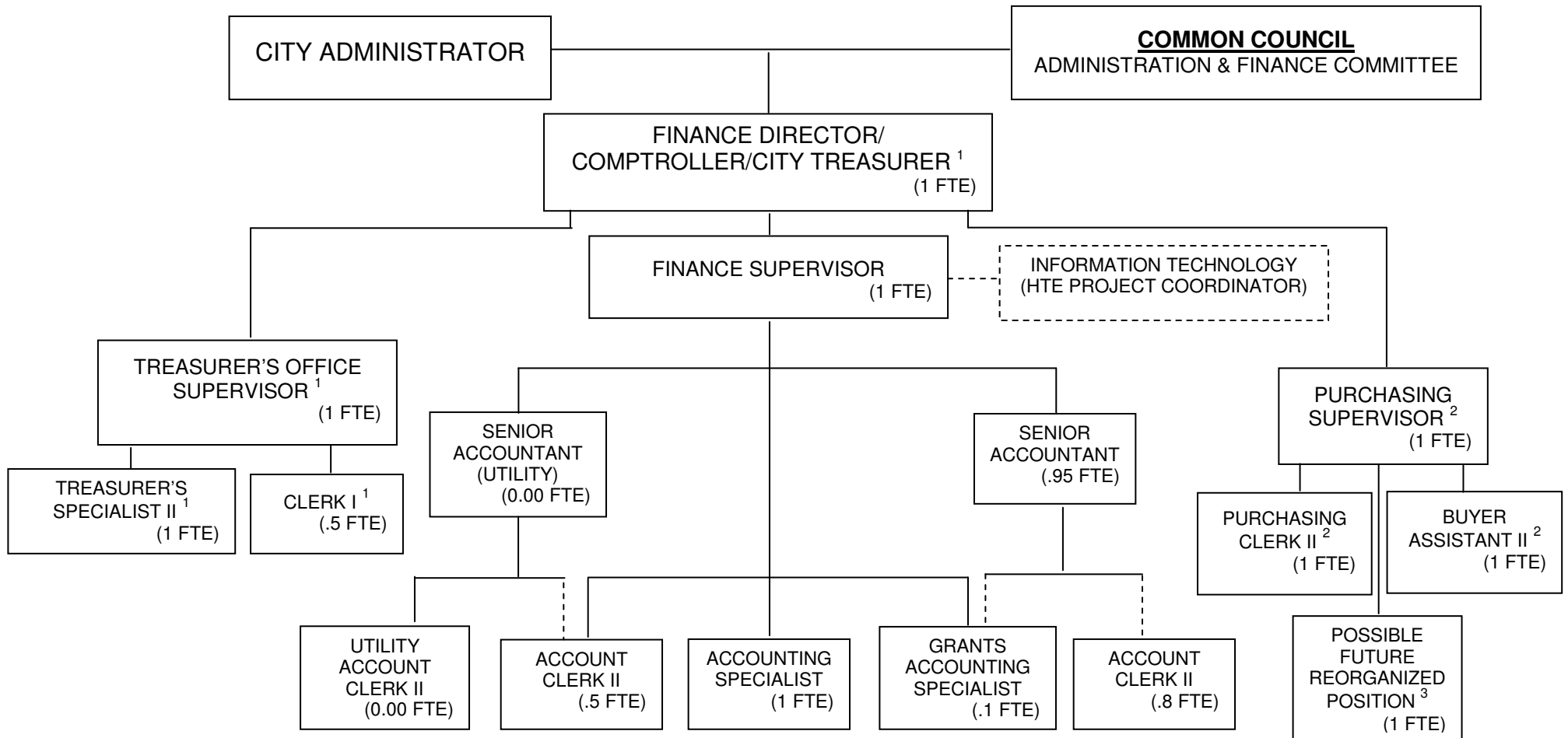
TOTAL POSITIONS: 7 (0 City FTE)

**ORGANIZATIONAL CHART
PLANNING AND ZONING**



TOTAL POSITIONS: 4 (3.03 City FTE)

**ORGANIZATIONAL CHART
FINANCE / PURCHASING / TREASURER**

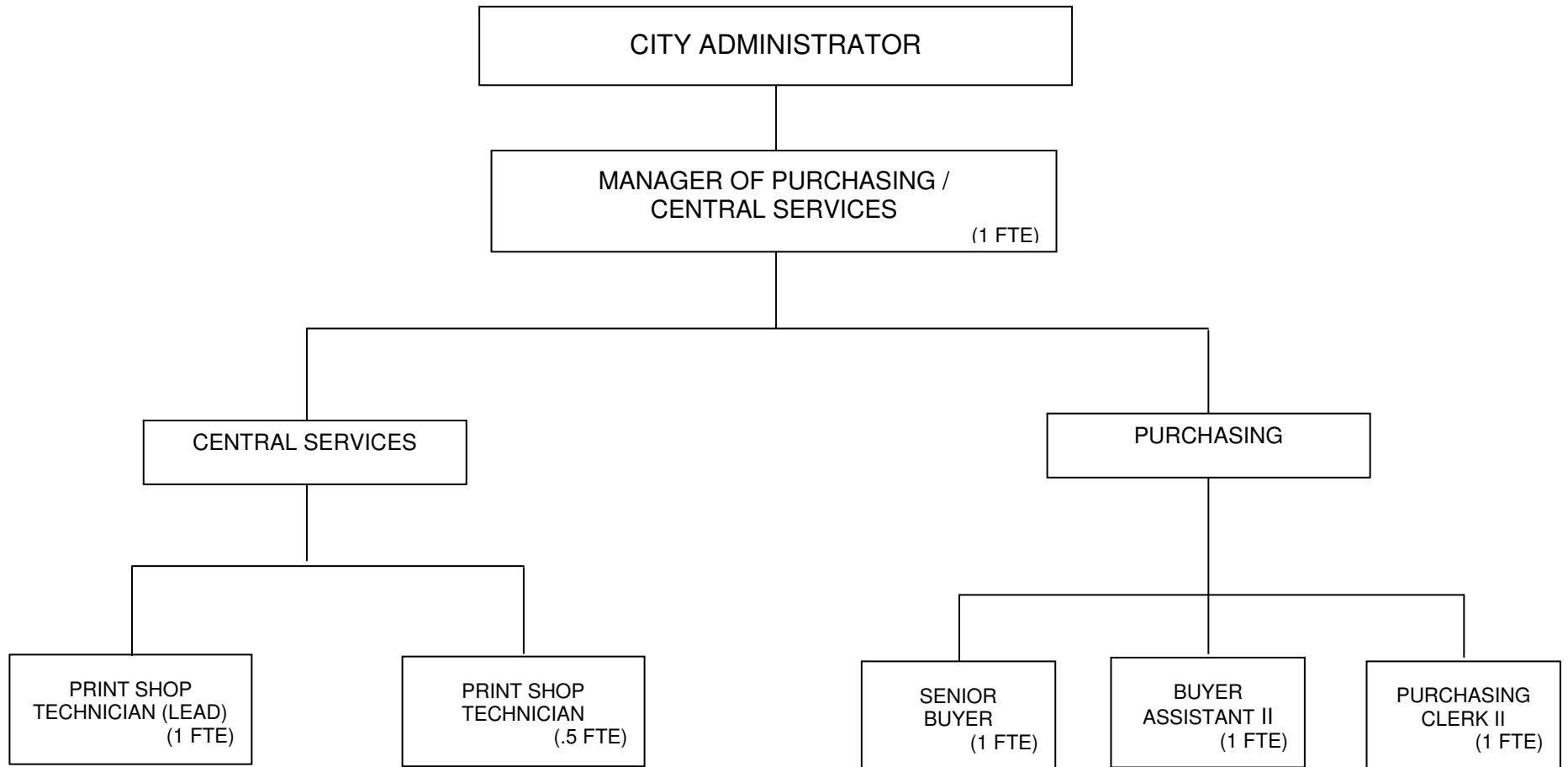


¹ City Treasurer effective with Charter Ordinance No. 20 change

² Effective on or about November 1, 2014

TOTAL POSITIONS: 15 (9.3 City FTE)
+ 1 PFRP (1 FTE)³
16 POSSIBLE

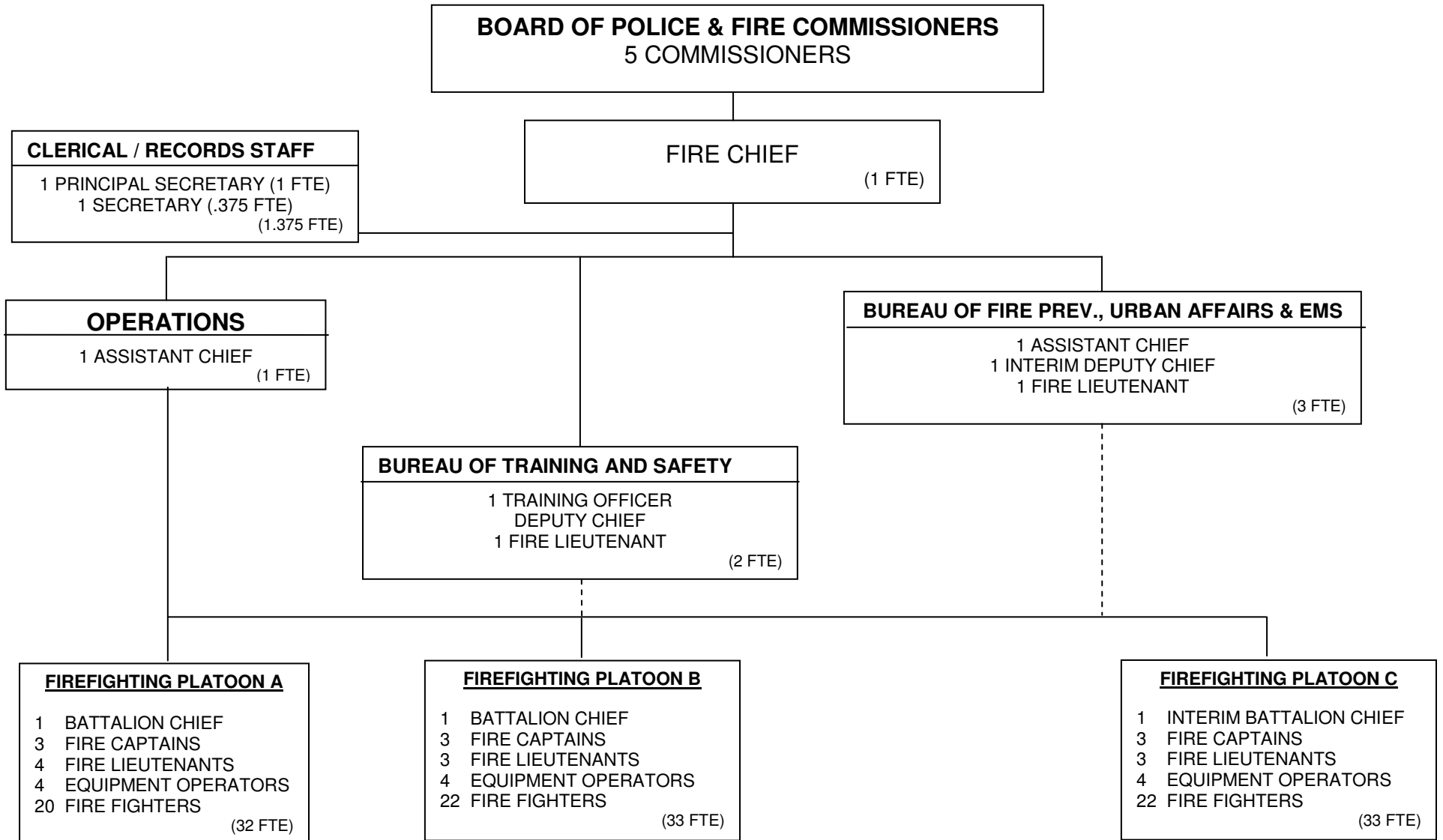
**ORGANIZATIONAL CHART
PURCHASING / CENTRAL SERVICES**



Effective until on or about November 1, 2014

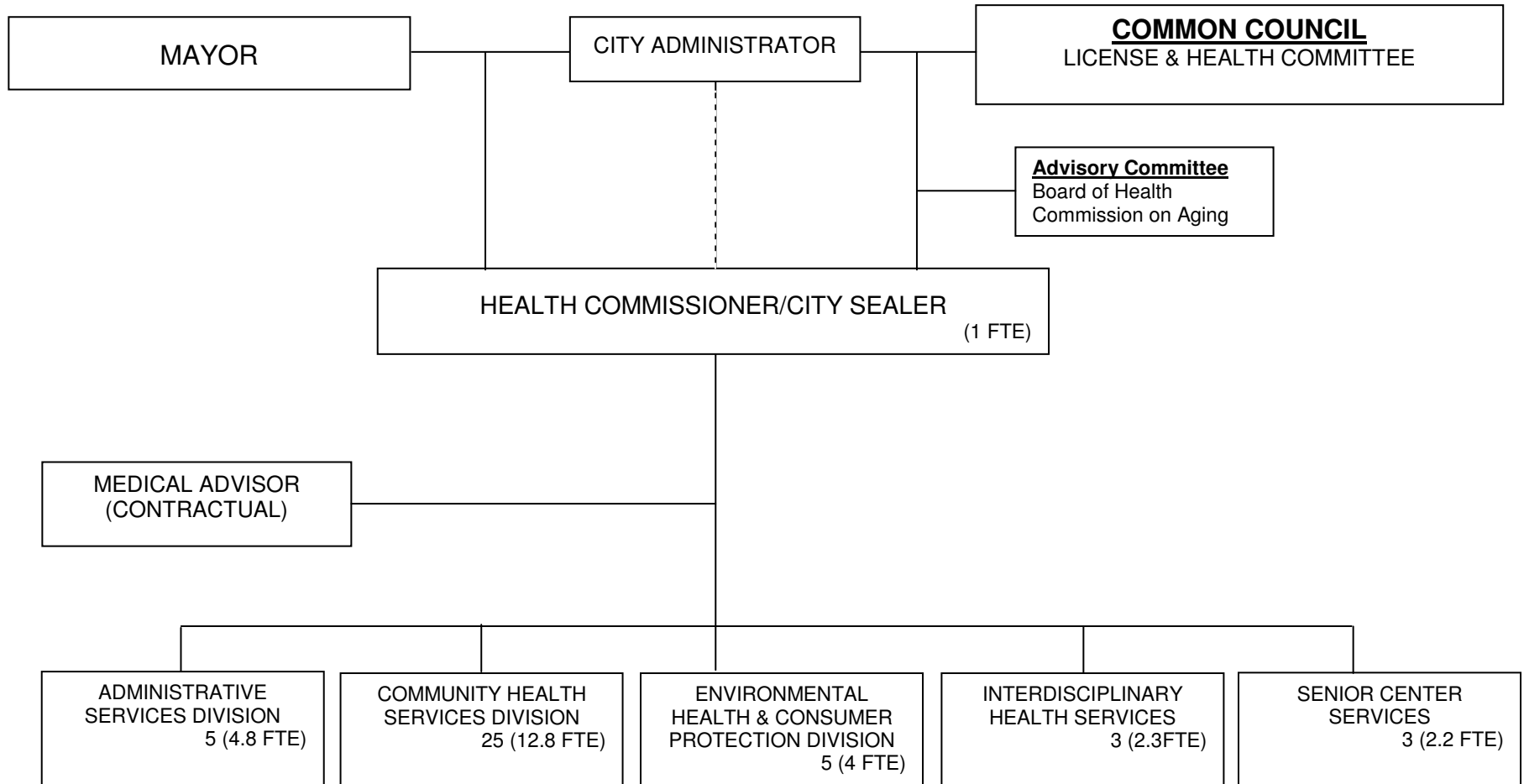
TOTAL POSITIONS: 6 (5.5 FTE)

**ORGANIZATIONAL CHART
FIRE DEPARTMENT**



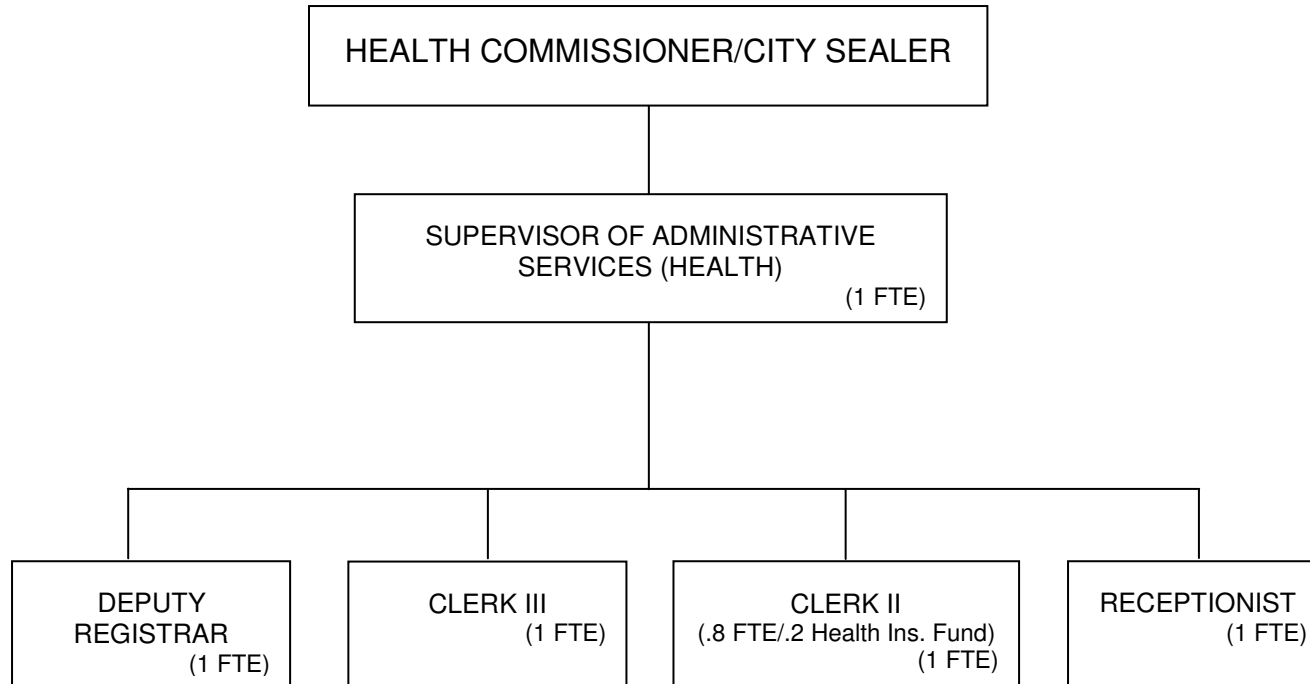
TOTAL POSITIONS: 107 (106 City FTE)

ORGANIZATIONAL CHART HEALTH



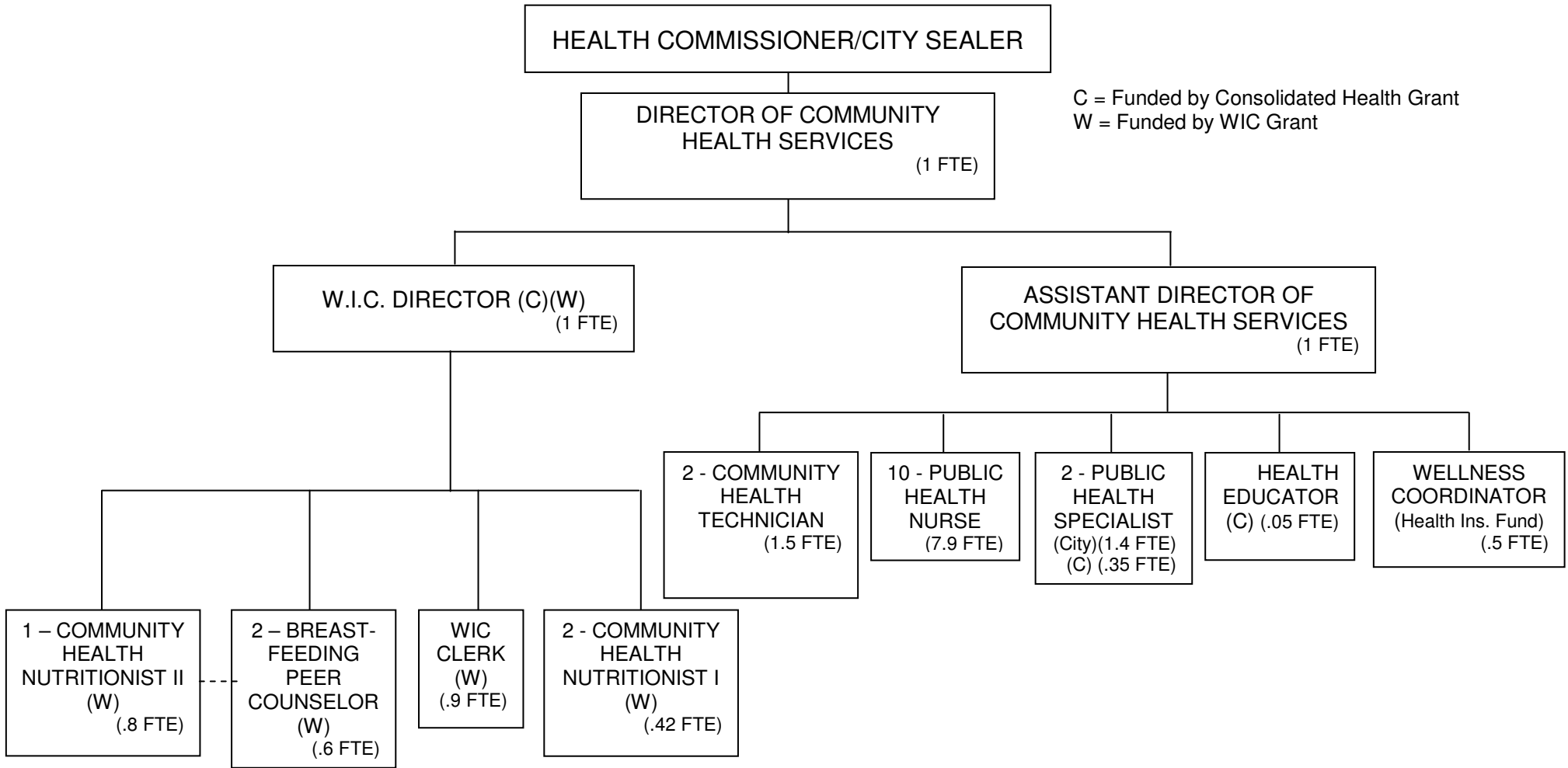
TOTAL POSITIONS: 42 (27.1 City FTE)

**ORGANIZATIONAL CHART
HEALTH
HEALTH ADMINISTRATIVE SERVICES**



TOTAL POSITIONS: 5 (4.8 City FTE)

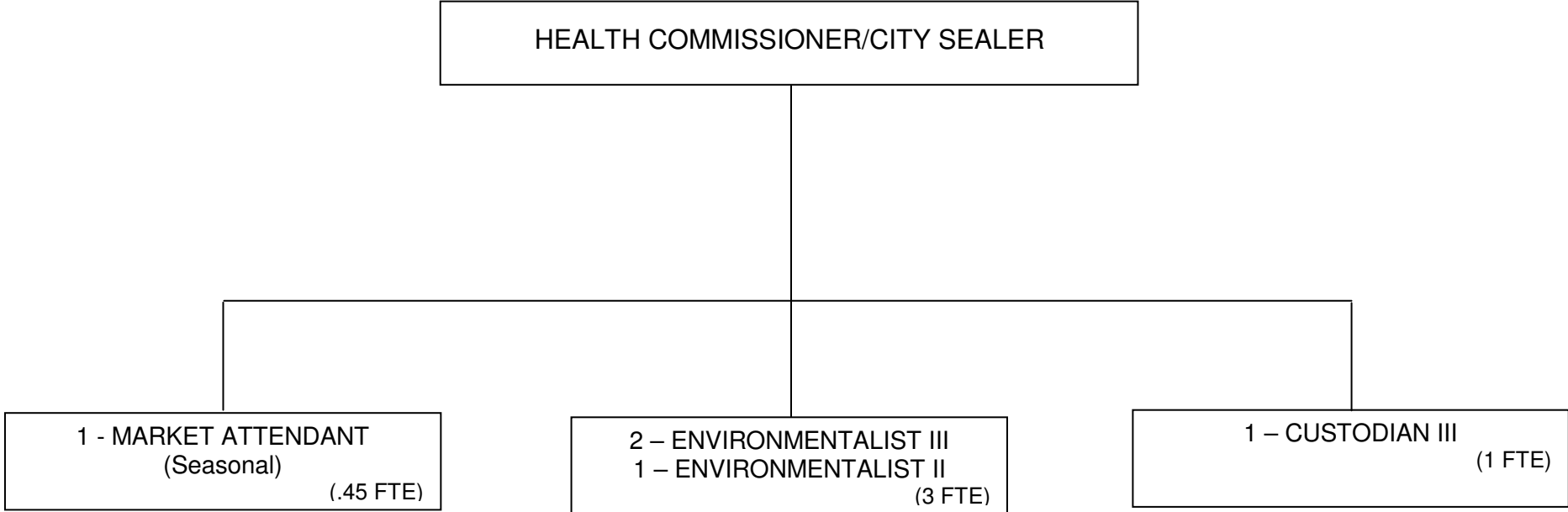
**ORGANIZATIONAL CHART
HEALTH
COMMUNITY HEALTH SERVICES**



C = Funded by Consolidated Health Grant
W = Funded by WIC Grant

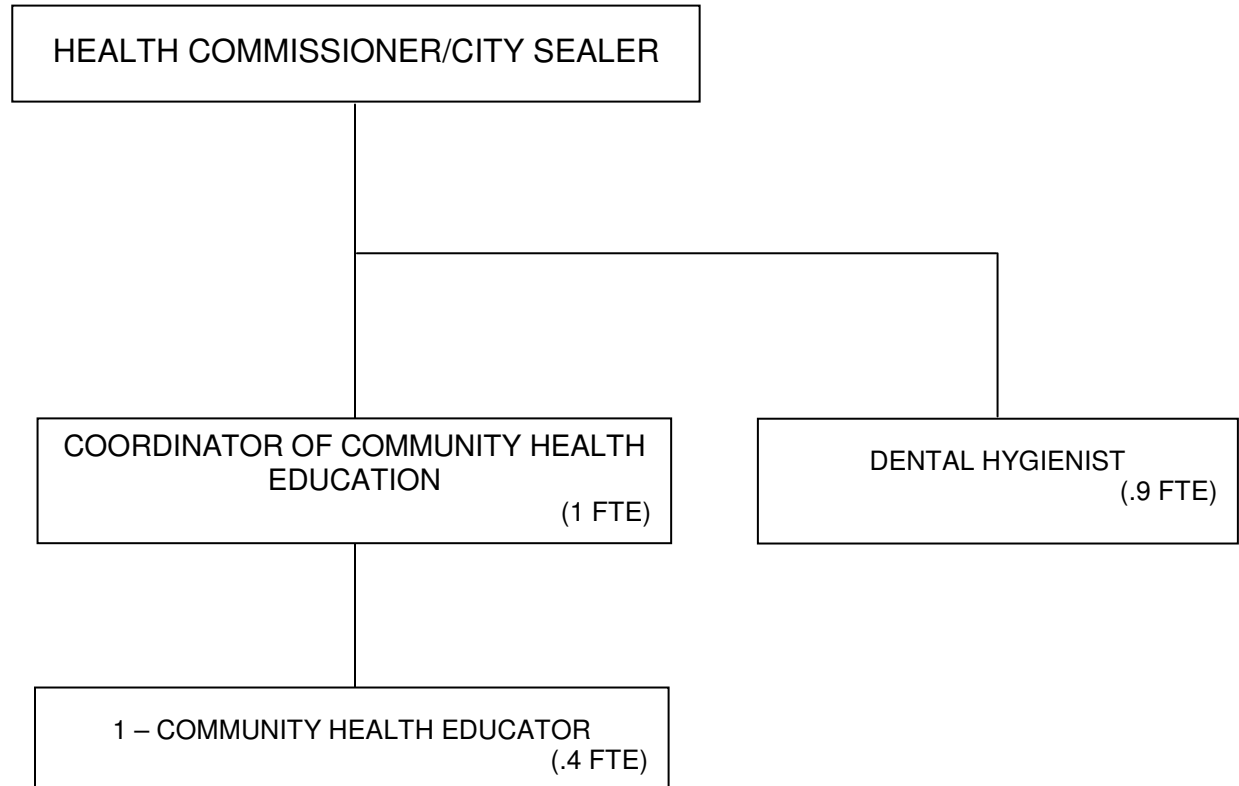
TOTAL POSITIONS: 25 (12.8 City FTE)

**ORGANIZATIONAL CHART
HEALTH
ENVIRONMENTAL HEALTH & CONSUMER PROTECTION**



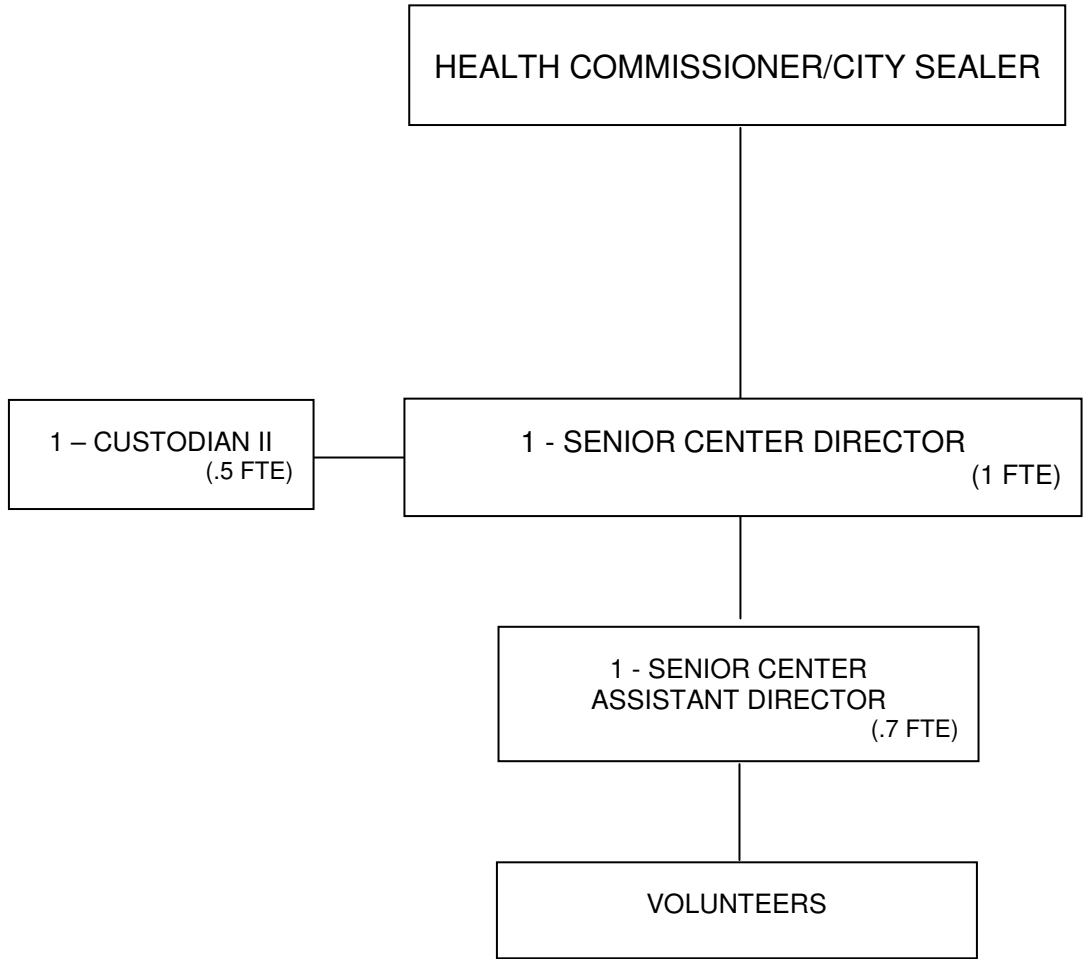
TOTAL POSITIONS: 5 (4 City FTE)

**ORGANIZATIONAL CHART
HEALTH
INTERDISCIPLINARY HEALTH SERVICES**



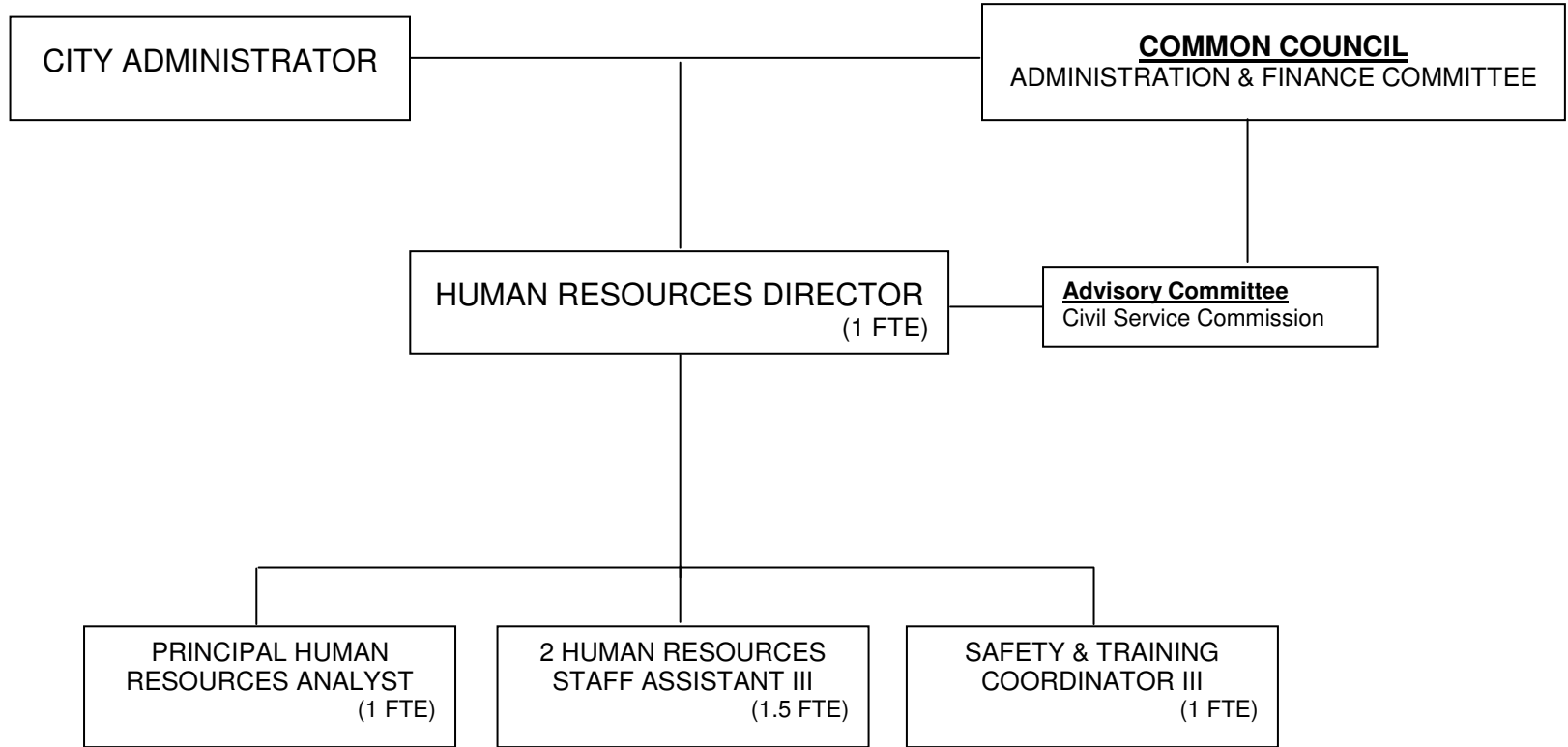
TOTAL POSITIONS: 3 (2.3 City FTE)

**ORGANIZATIONAL CHART
HEALTH
SENIOR CENTER**



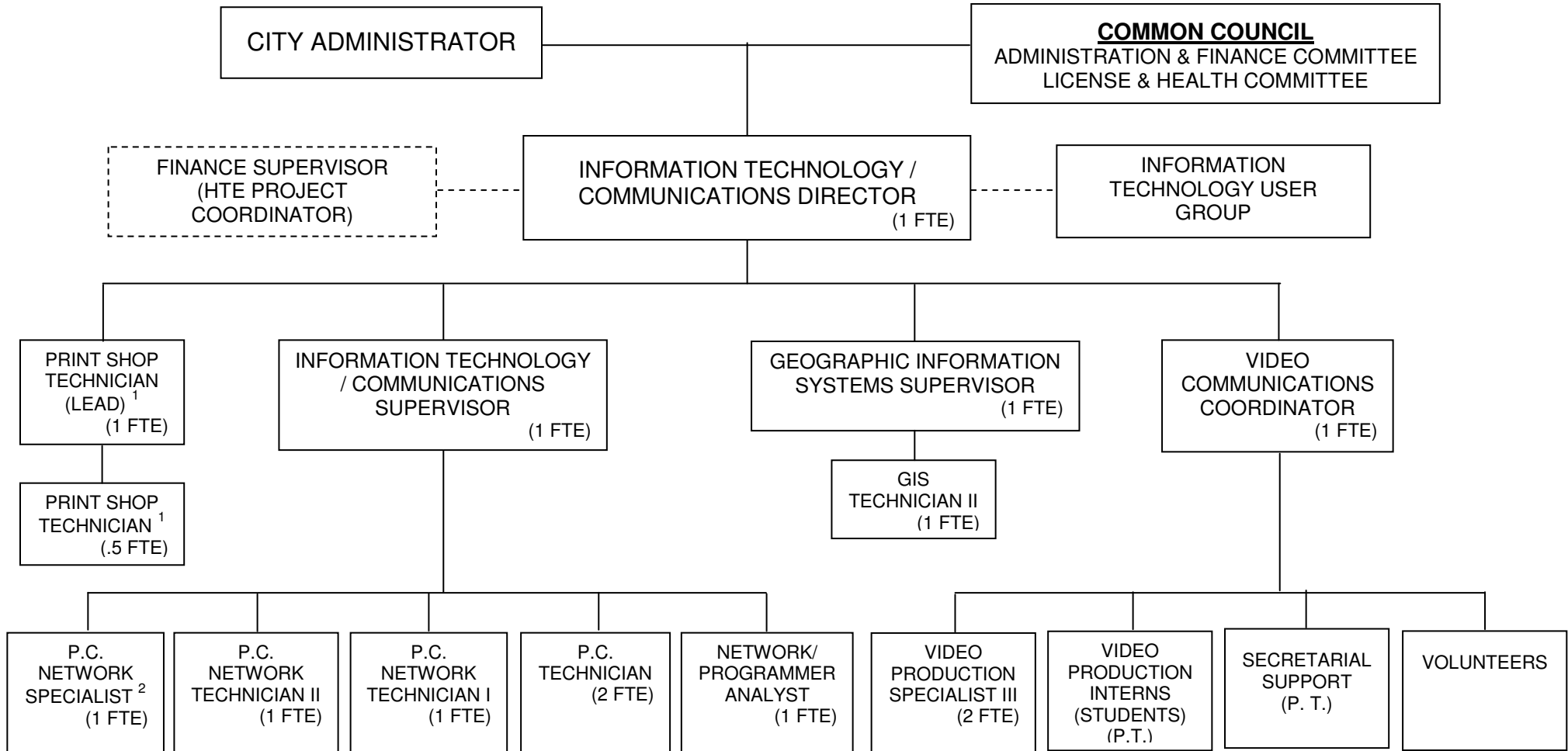
TOTAL POSITIONS: 3 (2.2 City FTE)

**ORGANIZATIONAL CHART
HUMAN RESOURCES**



TOTAL POSITIONS: 5 (4.5 City FTE)

**ORGANIZATIONAL CHART
INFORMATION TECHNOLOGY / COMMUNICATIONS**

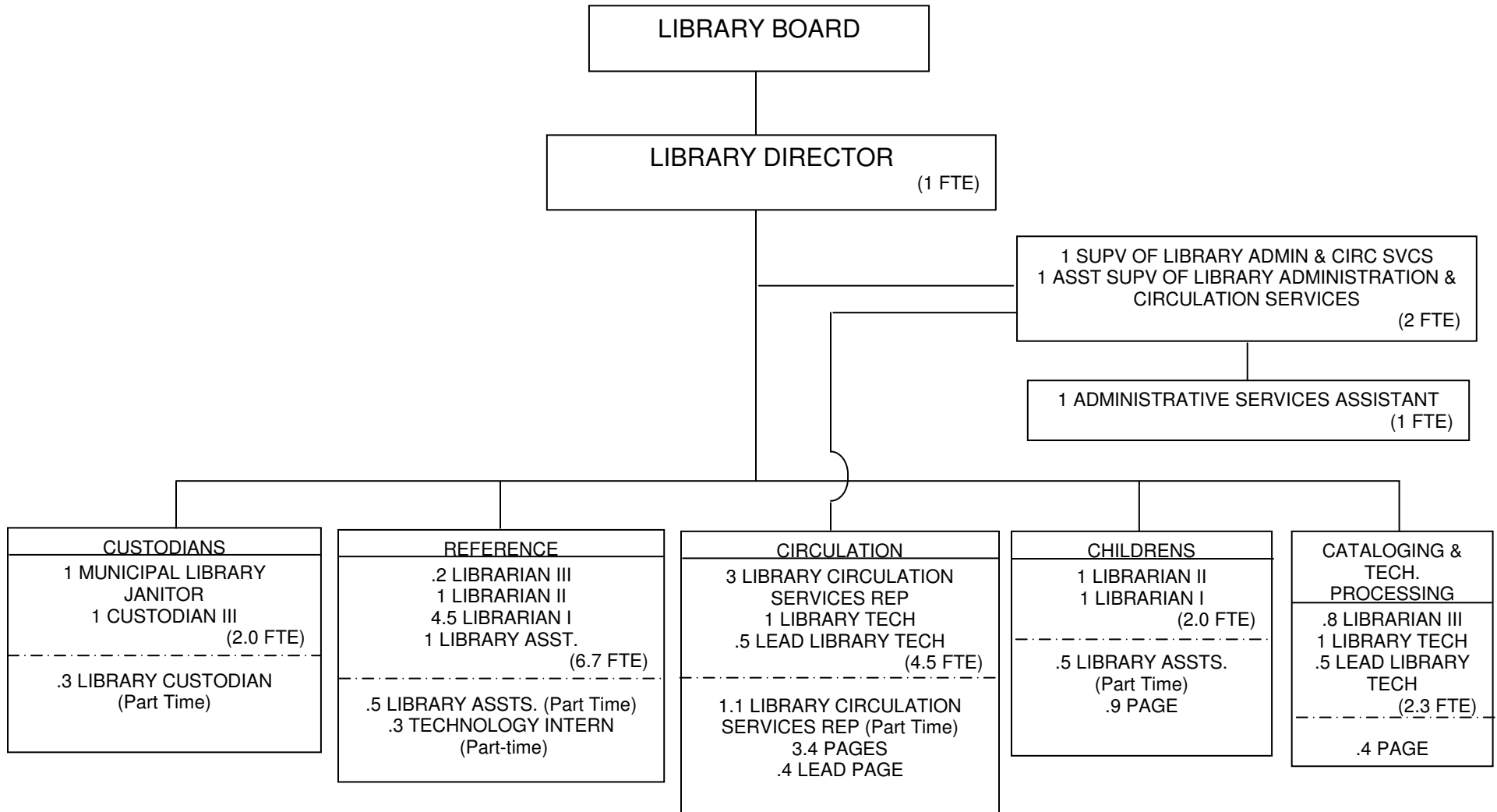


¹ Effective on or about November 1, 2014

² 1 P.C. Network Specialist to support Police Department

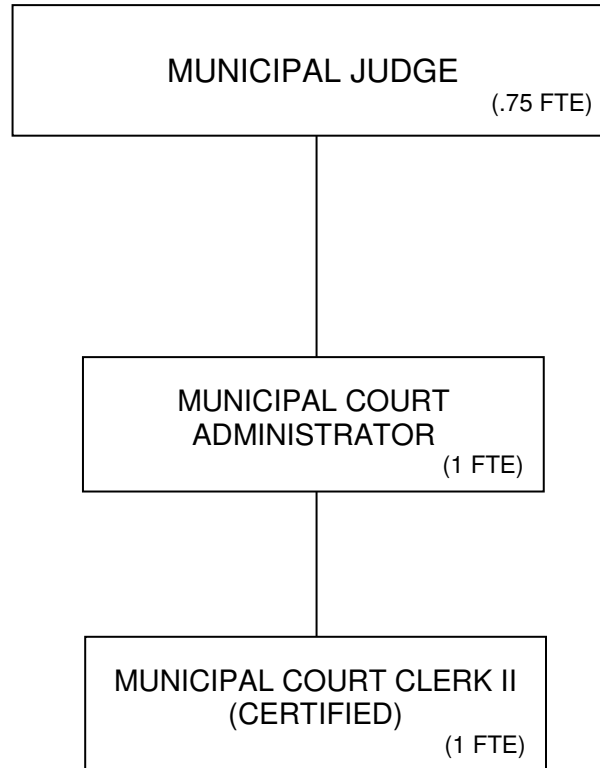
TOTAL POSITIONS: 15 (11.5 City FTE)

ORGANIZATIONAL CHART LIBRARY



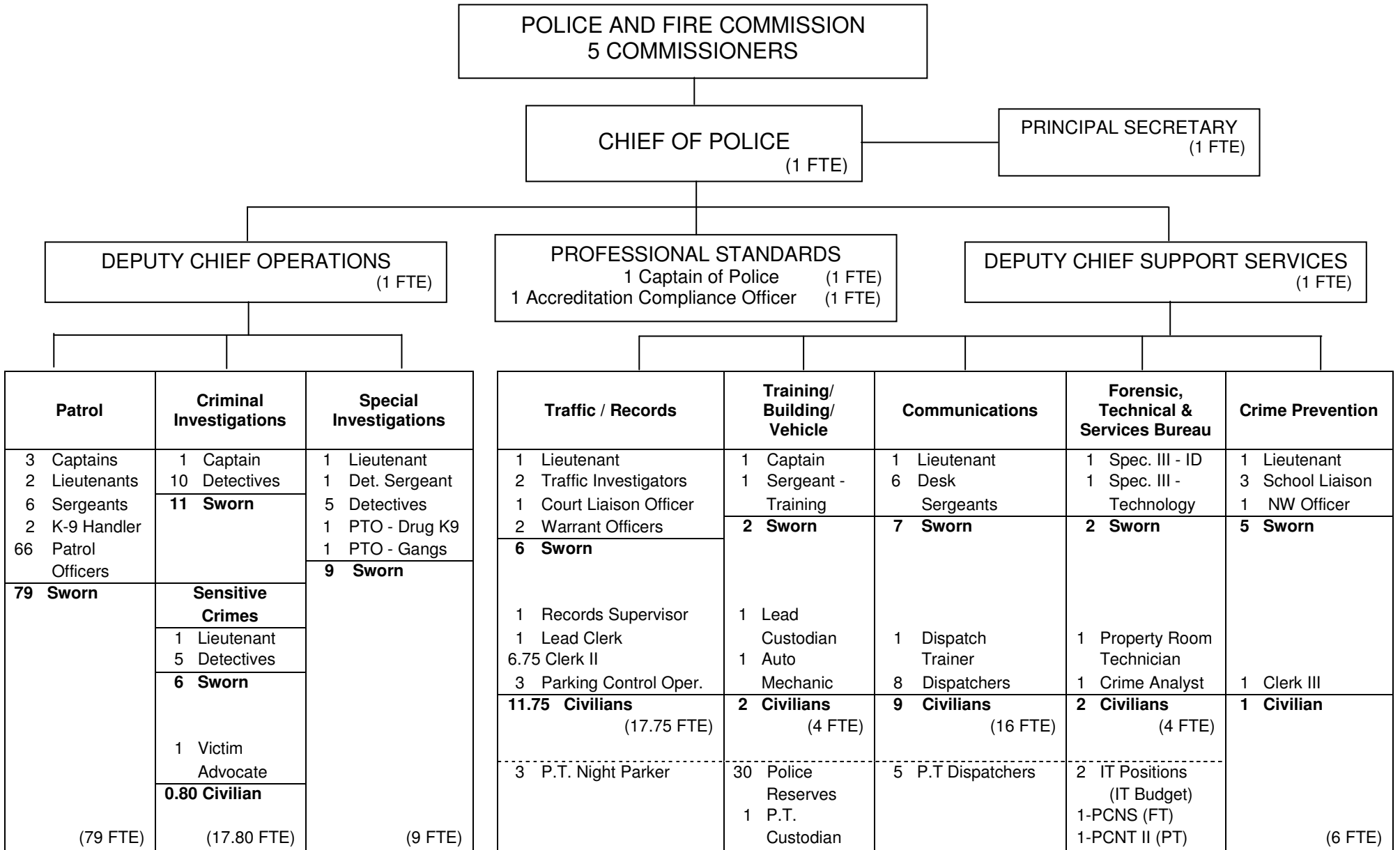
24 BENEFITED POSITIONS (21.5 City FTE)
 27 NON-BENEFITED P.T. POSITIONS (7.8 FTE)
 TOTAL POSITIONS: 51 (29.3 TOTAL FTE)

**ORGANIZATIONAL CHART
MUNICIPAL COURT**



TOTAL POSITIONS: 3 (2.75 City FTE)

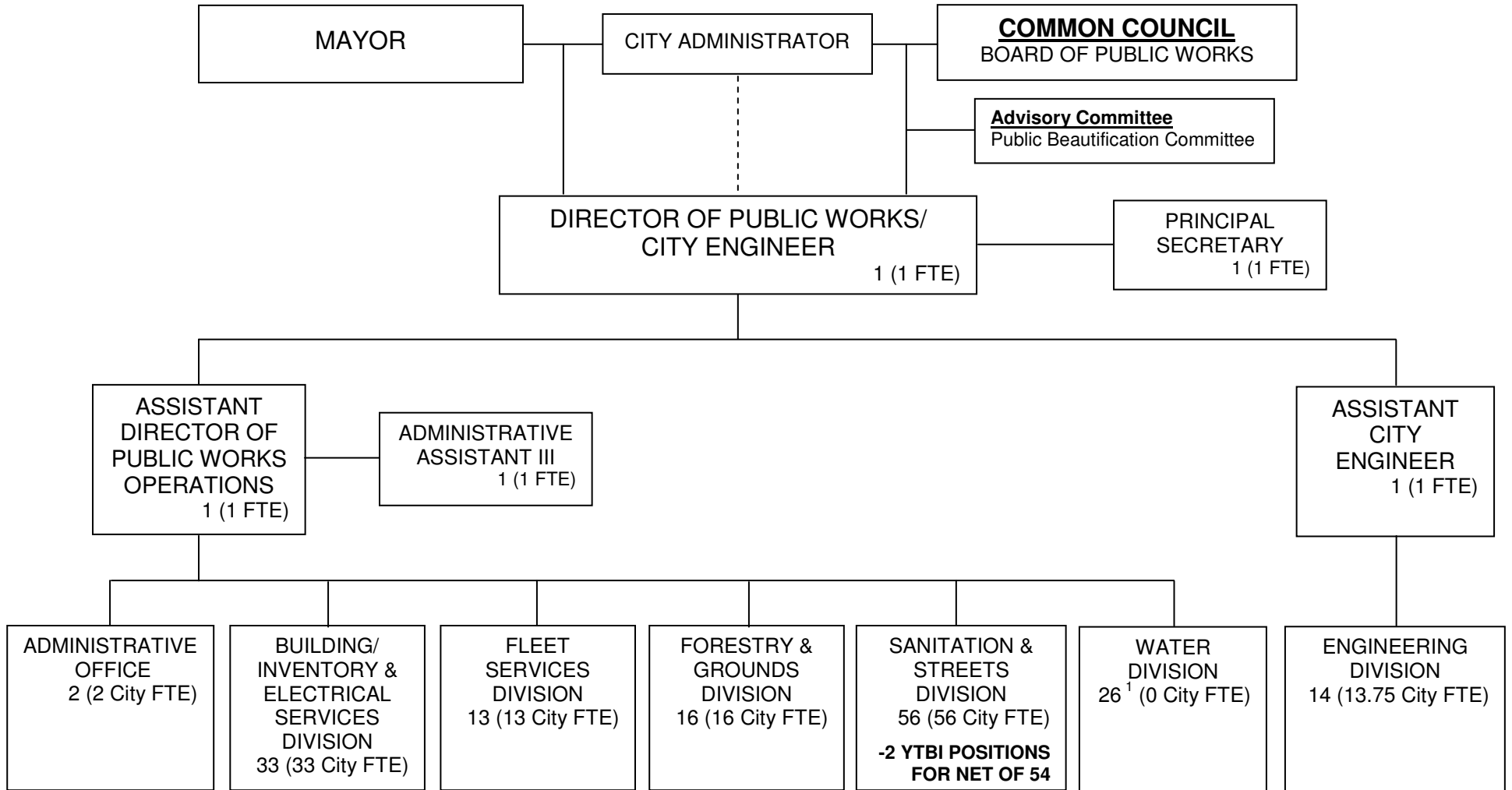
ORGANIZATIONAL CHART POLICE



Org Chart does not reflect the 11 part time and temporary positions (Community Aides, Night Parker Takers, Part-time Cleaner, and Clerks) as needed.

132	Sworn Employees
27.55	Civilians
159.55	Total Employees

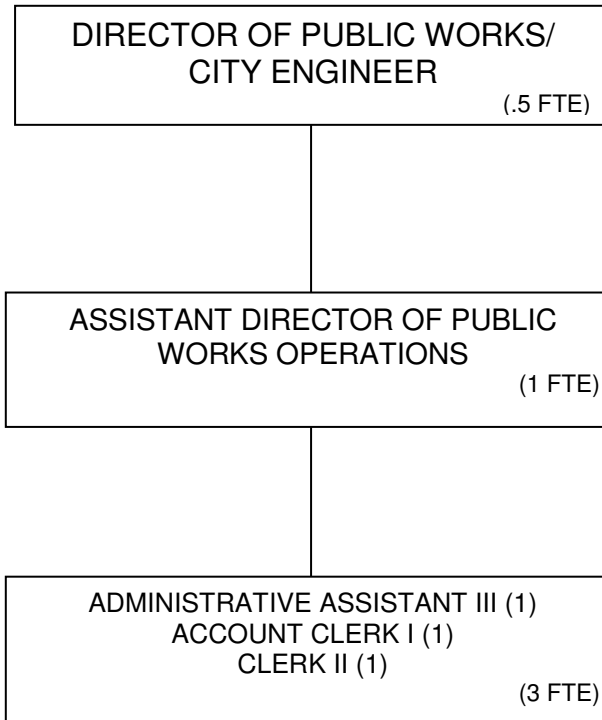
ORGANIZATIONAL CHART PUBLIC WORKS / ENGINEERING



¹ 2.55 POSITIONS UNDER THE DIRECTION OF THE FINANCE DIVISION

TOTAL POSITIONS: 165 (138.75 City FTE)
 - 2 YTBI POSITIONS
 ADJUSTED TOTAL 163 (136.75 City FTE)

**ORGANIZATIONAL CHART
PUBLIC WORKS / ENGINEERING
ADMINISTRATIVE OFFICE**

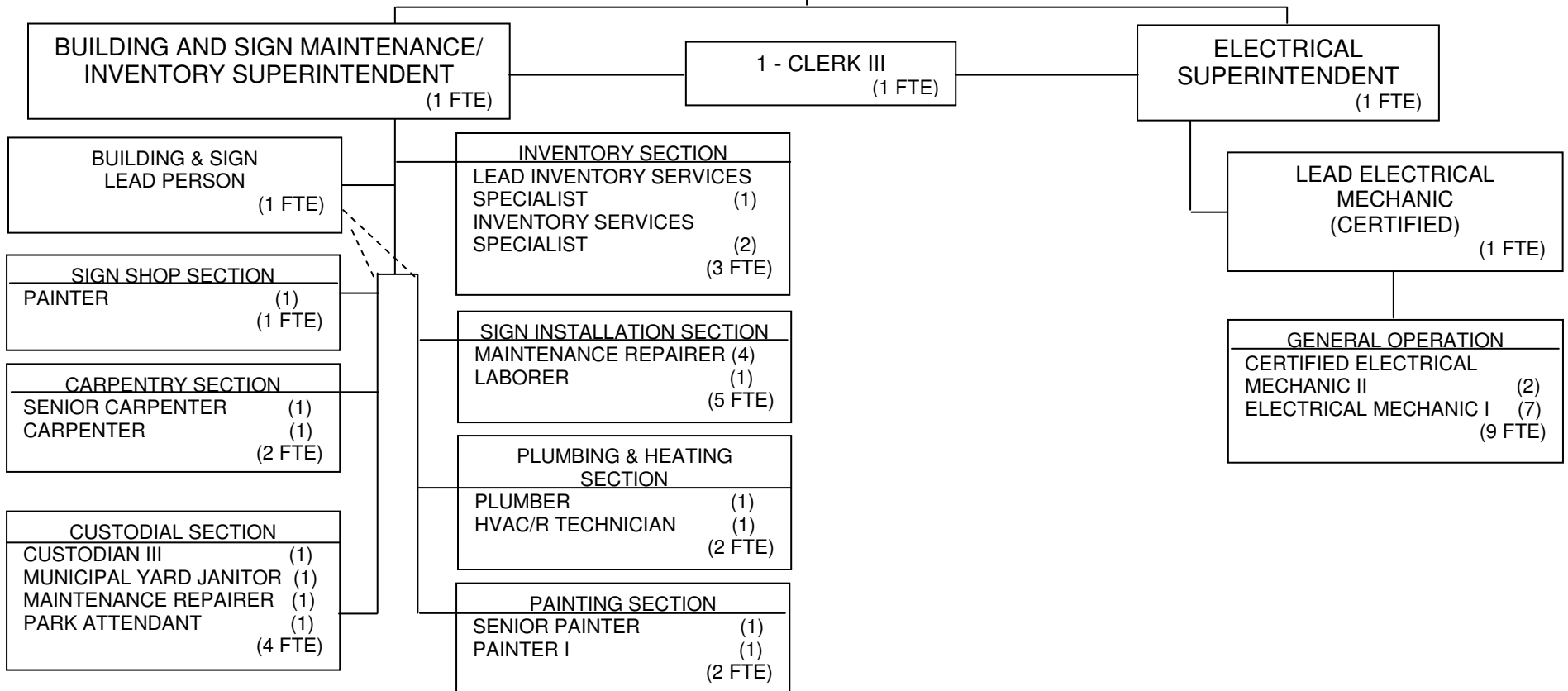


TOTAL POSITIONS: 5 (4.5 City FTE)

**ORGANIZATIONAL CHART
PUBLIC WORKS / ENGINEERING
BUILDING / INVENTORY AND ELECTRICAL SERVICES**

DIRECTOR OF PUBLIC WORKS/
CITY ENGINEER

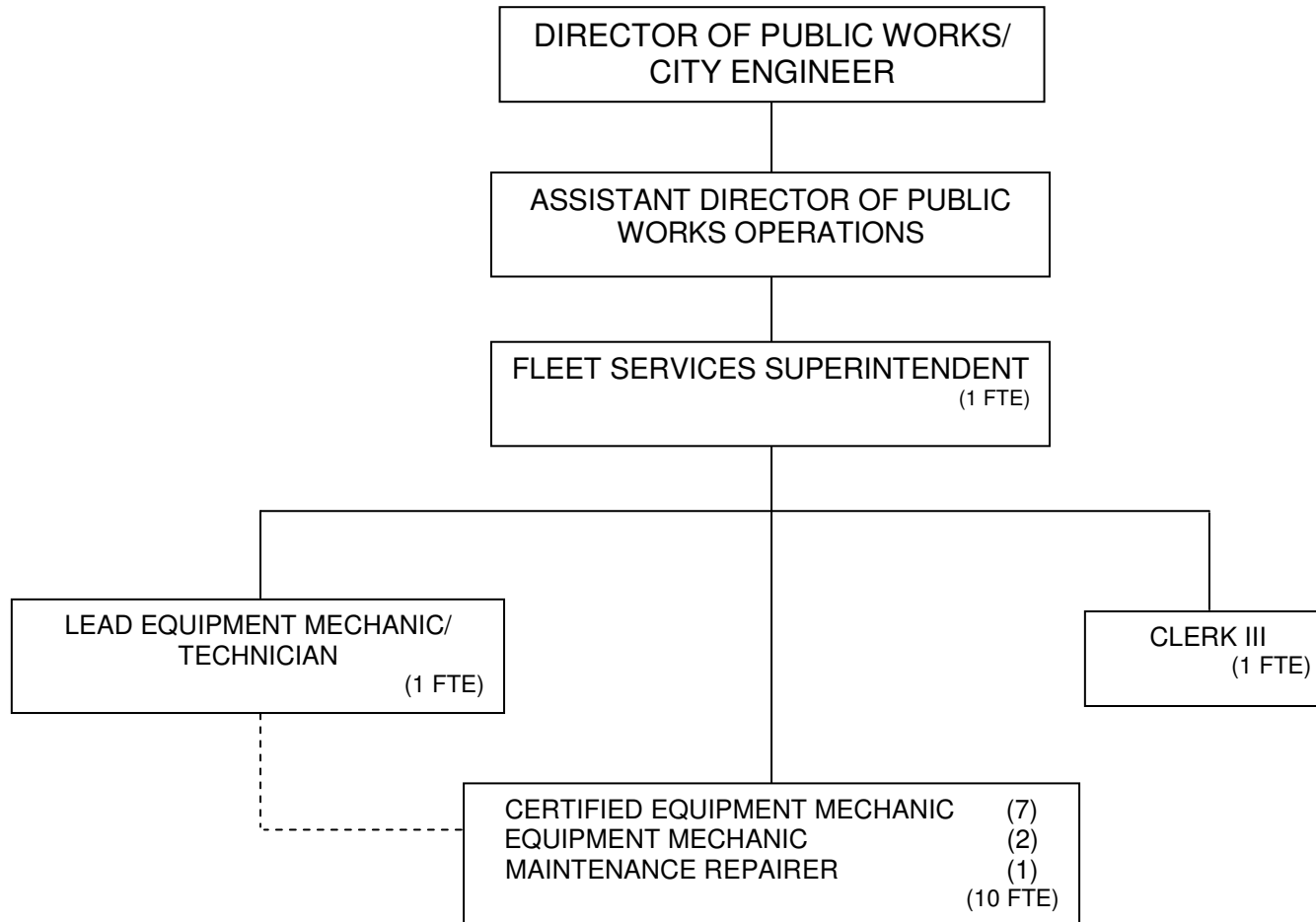
ASSISTANT DIRECTOR OF PUBLIC
WORKS OPERATIONS



Org Chart does not reflect the three (3) temporary laborer positions.

TOTAL POSITIONS: 33 (33 City FTE)

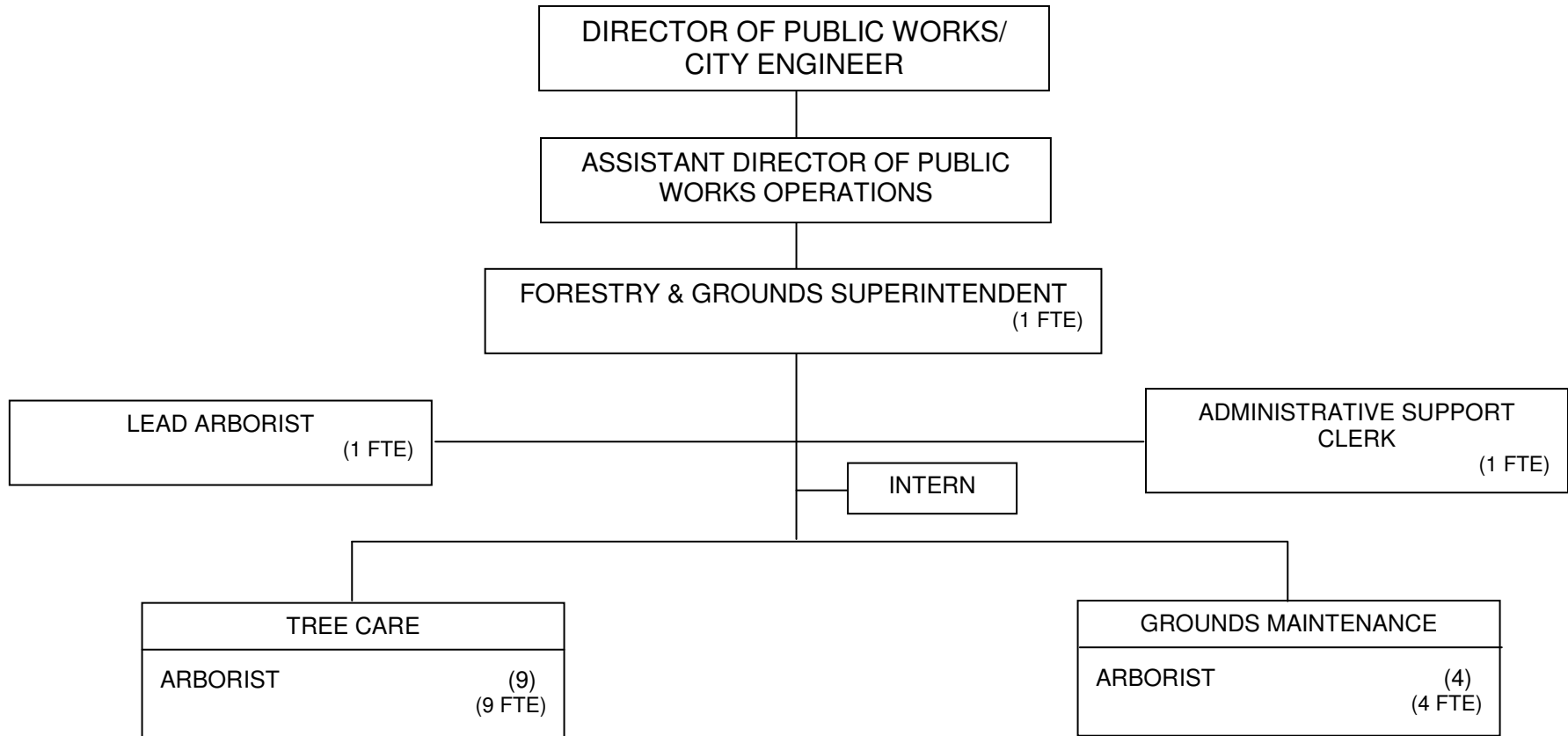
**ORGANIZATIONAL CHART
PUBLIC WORKS / ENGINEERING
FLEET SERVICES**



Org Chart does not reflect the one (1) temporary laborer position.

TOTAL POSITIONS: 13 (13 City FTE)

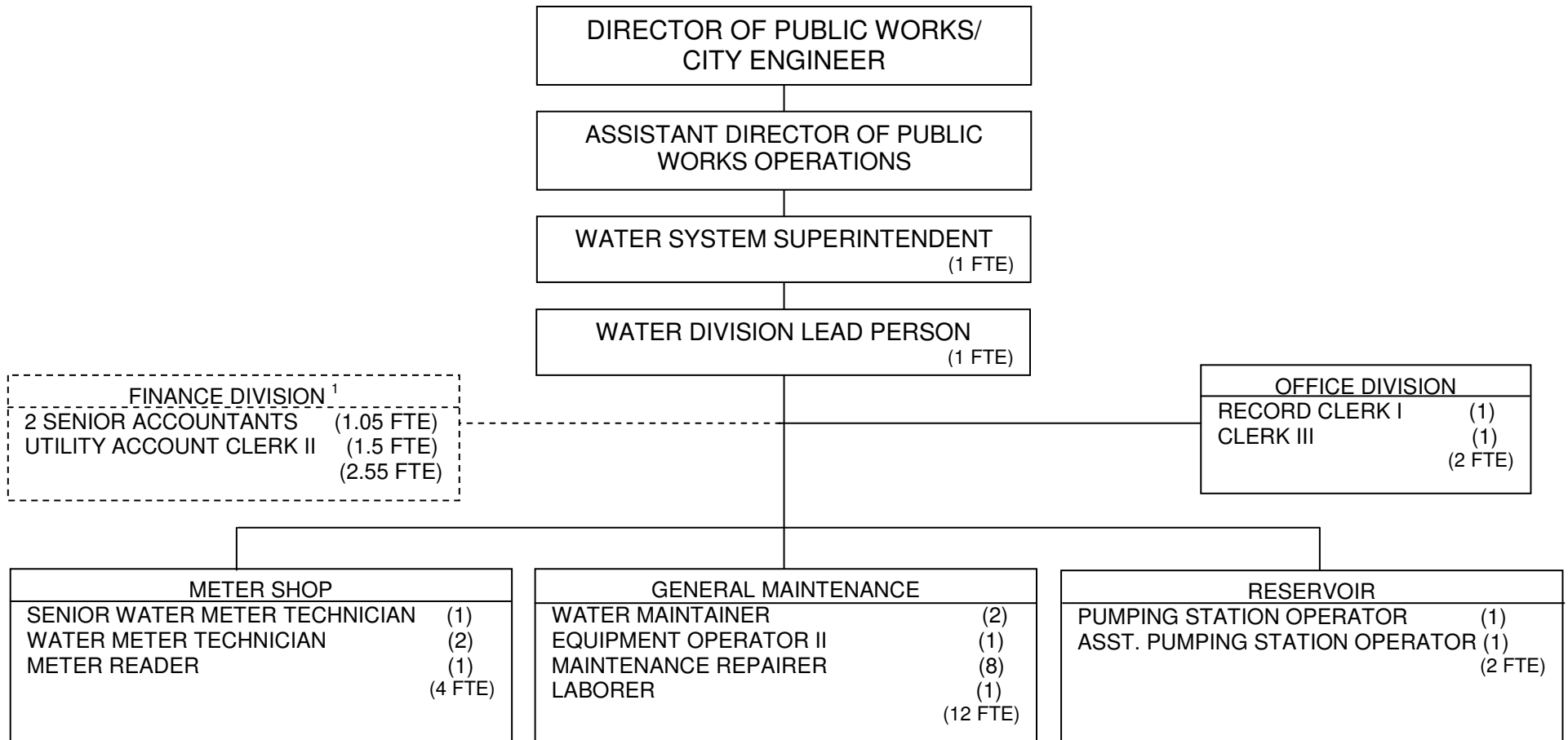
**ORGANIZATIONAL CHART
PUBLIC WORKS / ENGINEERING
FORESTRY & GROUNDS**



Org Chart does not reflect the ten (10) temporary laborer positions.

TOTAL POSITIONS: 16 (16 City FTE)

**ORGANIZATIONAL CHART
PUBLIC WORKS / ENGINEERING
WATER**

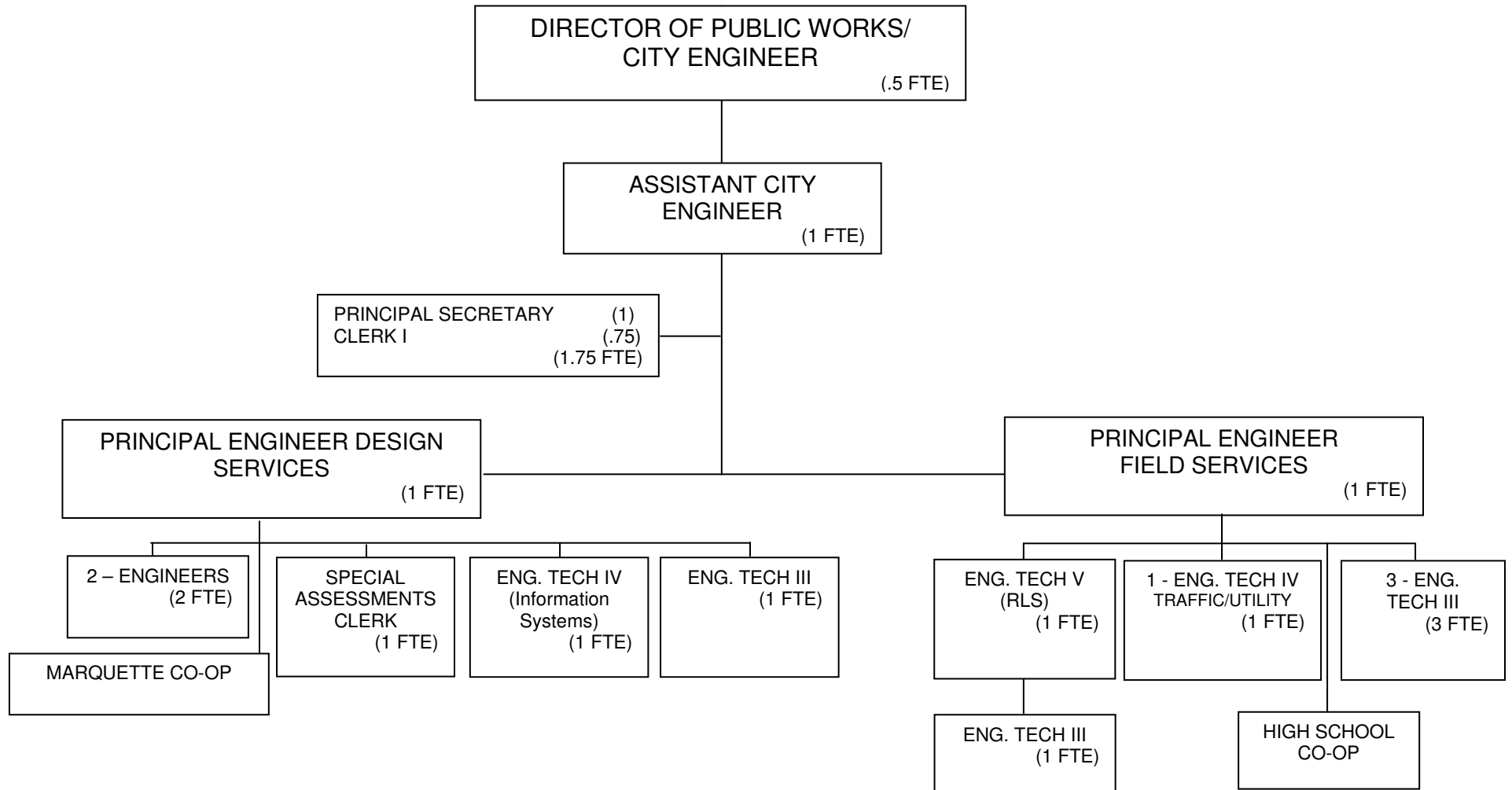


¹ These positions are in the Public Works Water Division Budget but are under the direction of the Finance Division.

NOTE: Other personnel working in support of the Water Utility (A&F, Treasurer, PW, IT) are also funded by the Water Utility, but are not included on this chart. Further, some of the positions reflected above on this chart also perform work funded by other Utility Budgets (Sanitary, Storm, etc.).

TOTAL POSITIONS: 26 (0 City FTE)

**ORGANIZATIONAL CHART
PUBLIC WORKS/ENGINEERING
ENGINEERING**



TOTAL POSITIONS: 17 (16.25 City FTE)