

City of West Allis



Organizational Chart

2017

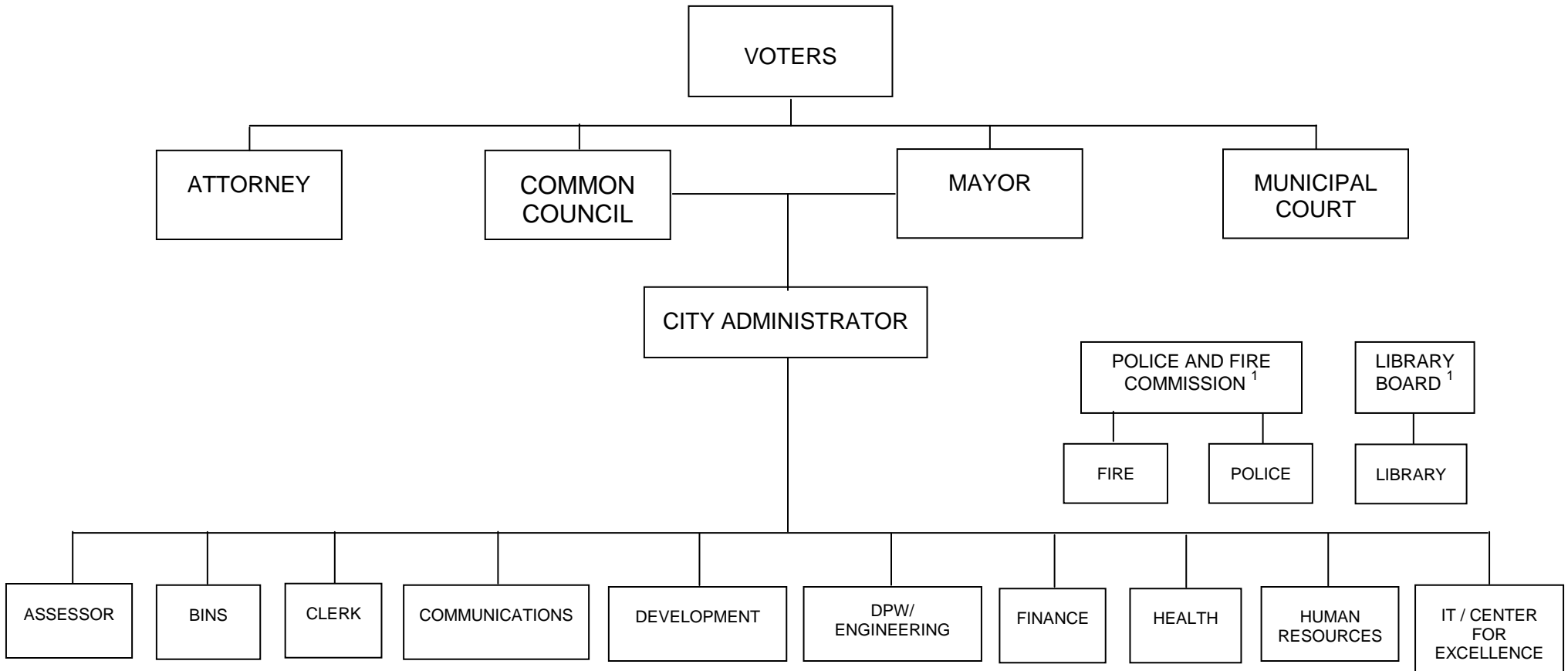
ORGANIZATIONAL CHARTS

January 1, 2017

	<u>Page</u>
City of West Allis.....	1
Council Policy Committees.....	2
Advisory Committees.....	3
Mayor	4
Assessor.....	5
Attorney	6
Building Inspections & Neighborhood Services	7
City Administrator	8
Clerk.....	9
Communications.....	10
Development	11
Community Development	12
Planning & Zoning	13
Finance.....	14
Fire	15
Health.....	16
Health Administrative Services	17
Community Health Services	18
Environmental Health & Consumer Protection	19
Interdisciplinary Health Services.....	20
Senior Center	21
WIC Program	22
Human Resources.....	23
IT / Center for Excellence	24
Library	25

	<u>Page</u>
Municipal Court.....	26
Police.....	27
Public Works / Engineering.....	28
Administrative Office.....	29
Building / Inventory & Electrical Services.....	30
Fleet Services.....	31
Forestry & Grounds	32
Sanitation & Streets.....	33
Water.....	34
Engineering	35

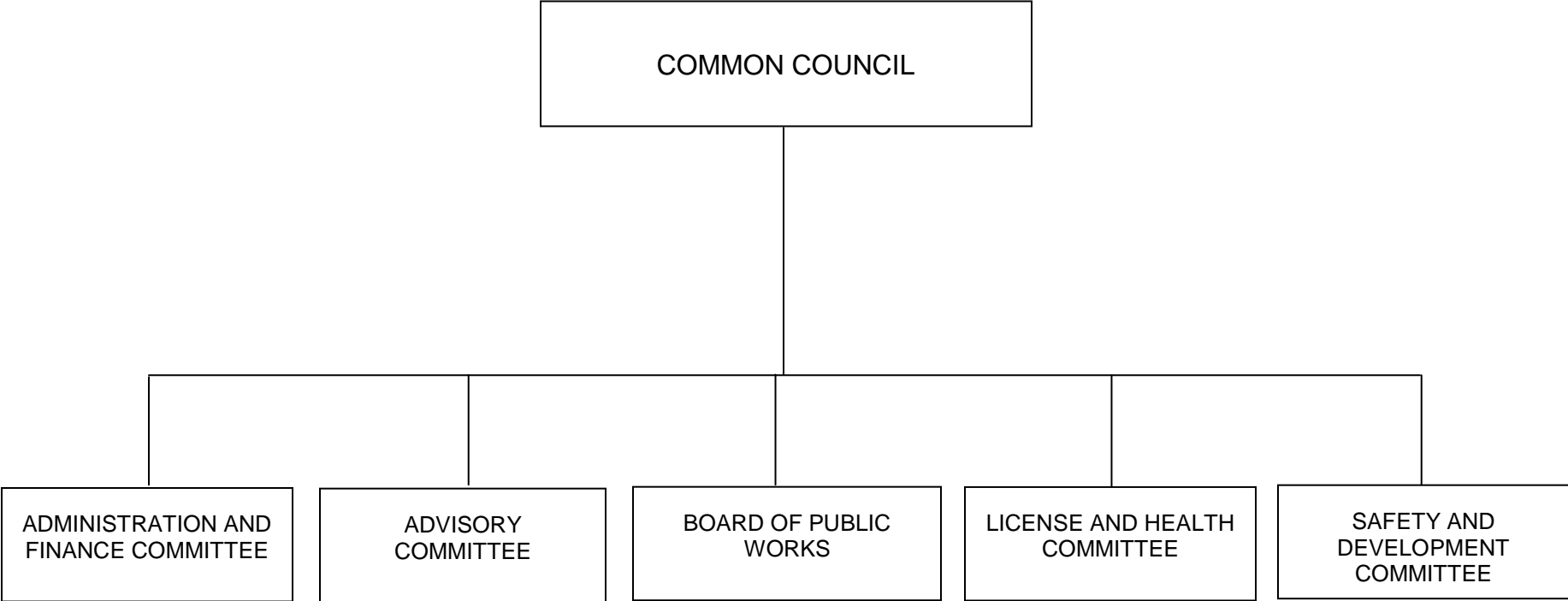
**ORGANIZATIONAL CHART
CITY OF WEST ALLIS**



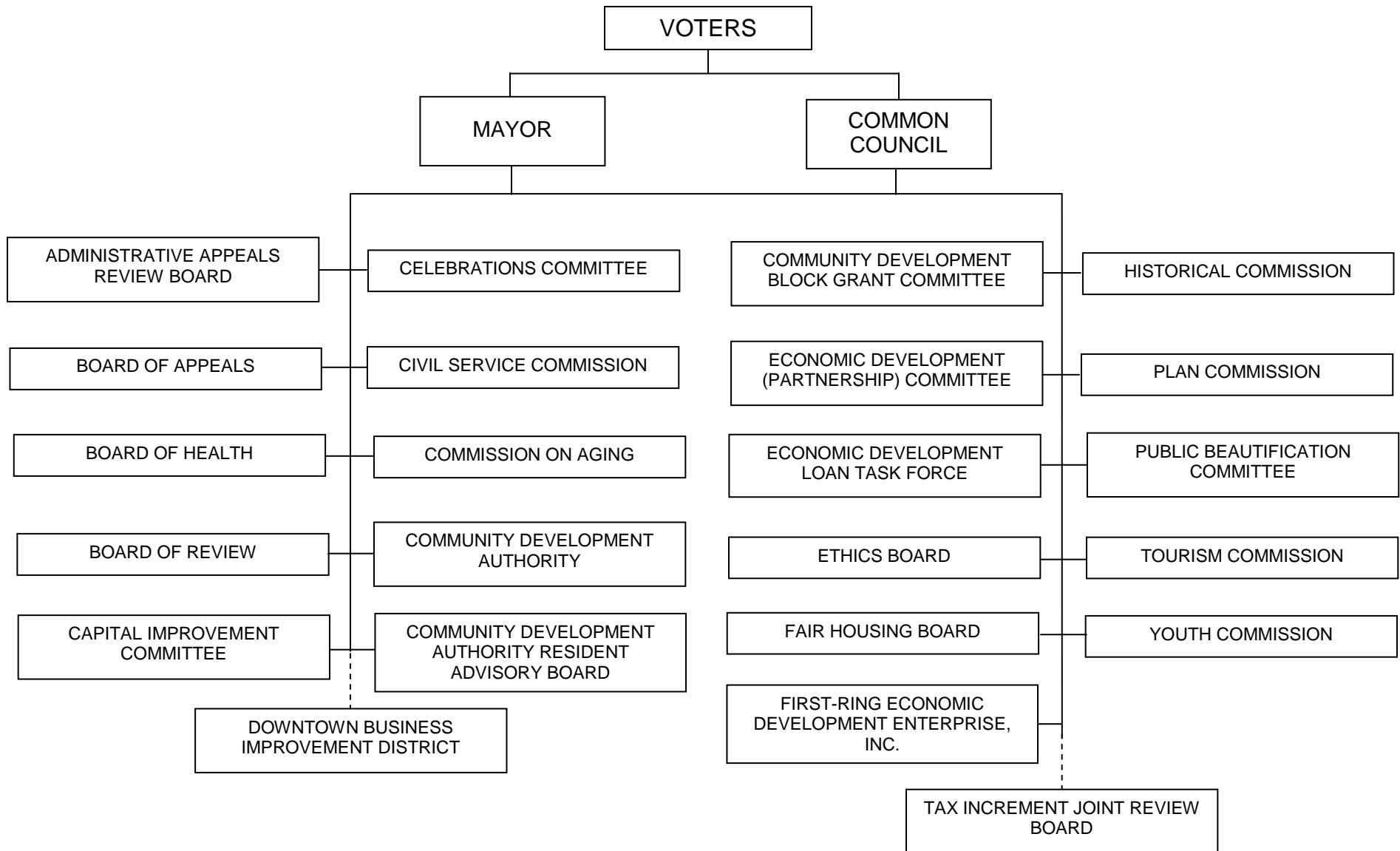
¹ Appointed by the Mayor and confirmed by the Common Council, with policy responsibility.

Regular positions for 2017 budget: 514.11 City FTE (per budget)

**ORGANIZATIONAL CHART
COUNCIL POLICY COMMITTEES**

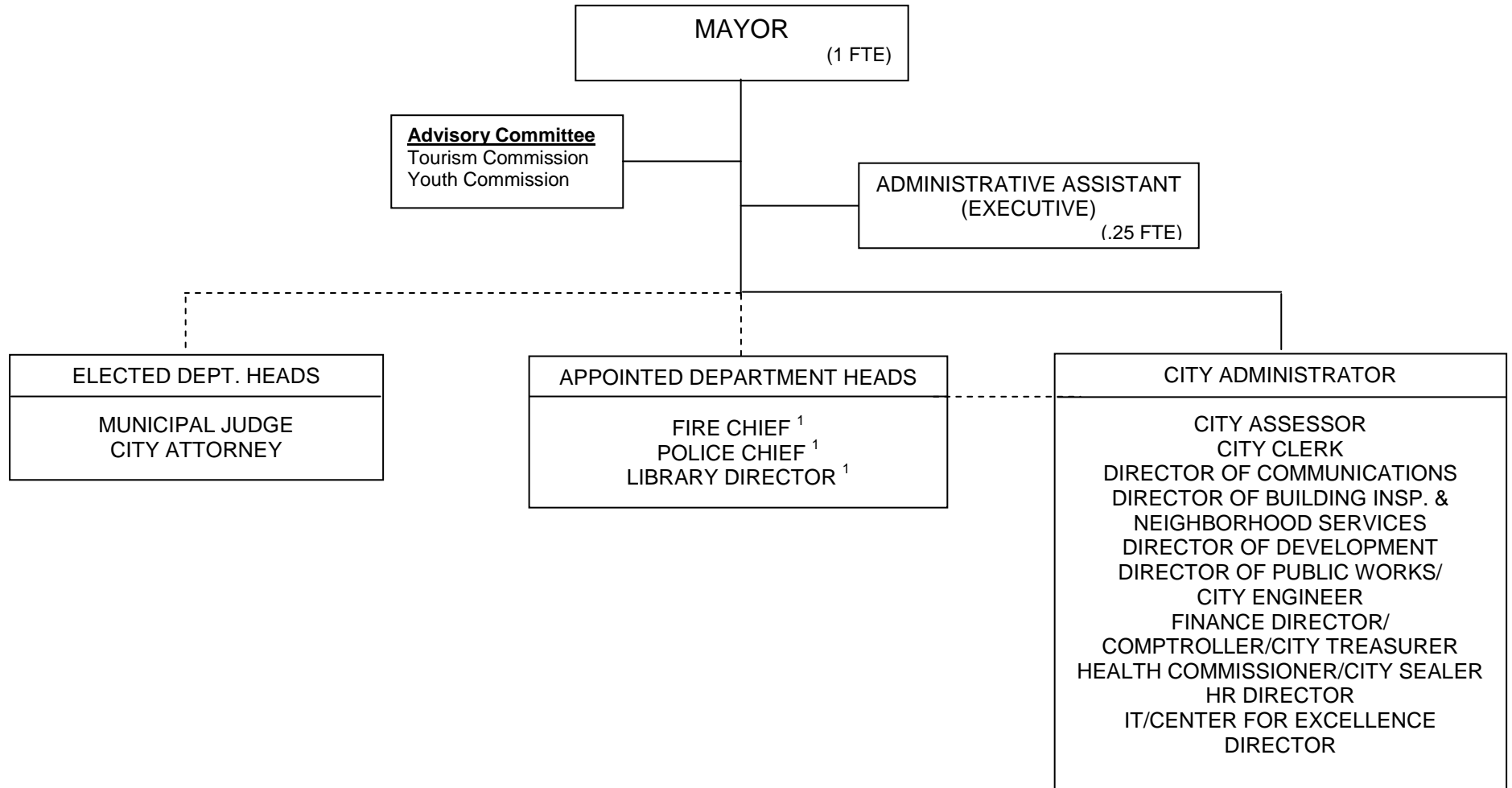


ORGANIZATIONAL CHART ADVISORY COMMITTEES



Advisory Committee members are appointed by the Mayor and confirmed by the Common Council.

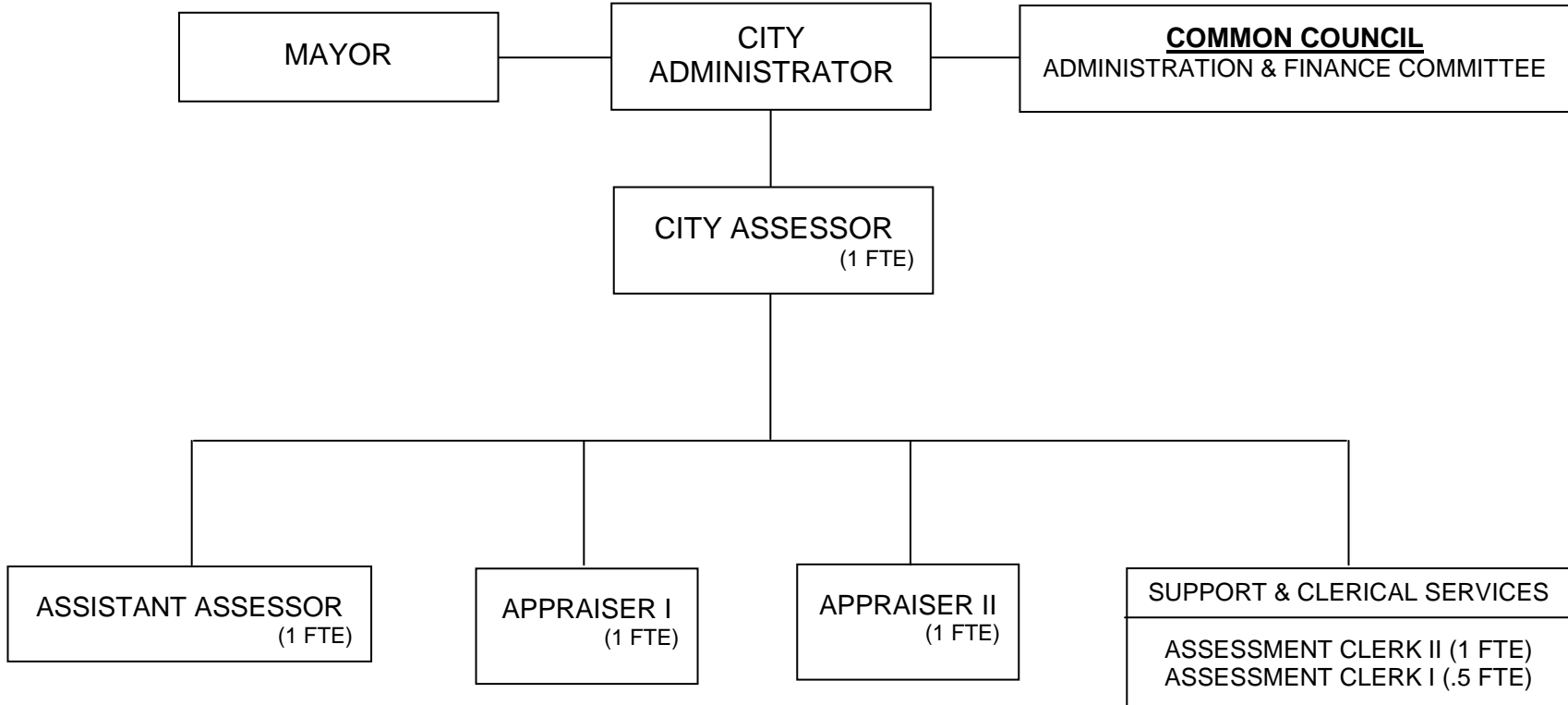
**ORGANIZATIONAL CHART
MAYOR**



¹ Reports directly to Police & Fire Commission and Library Board respectively.

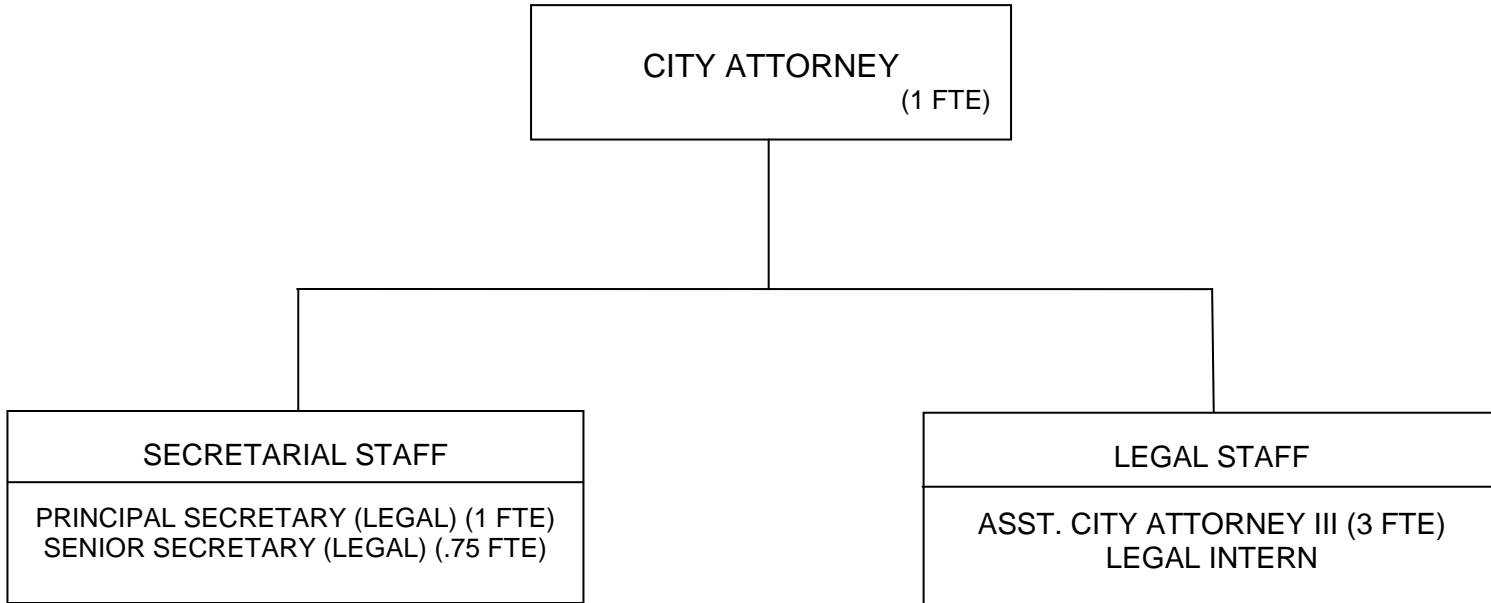
CITY FUNDED FTEs: 1.25

**ORGANIZATIONAL CHART
ASSESSOR**



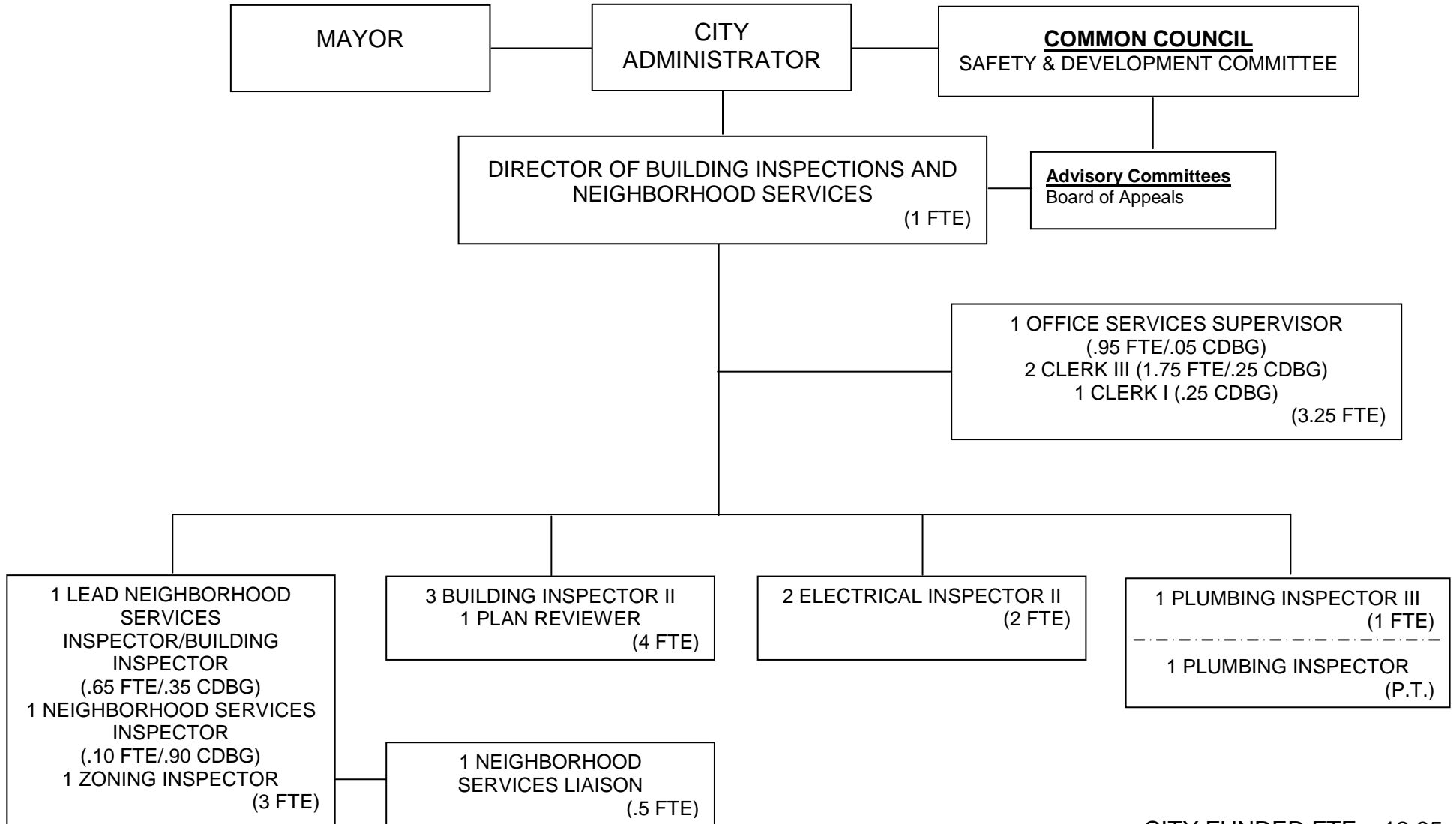
CITY FUNDED FTEs: 5.5

**ORGANIZATIONAL CHART
ATTORNEY**



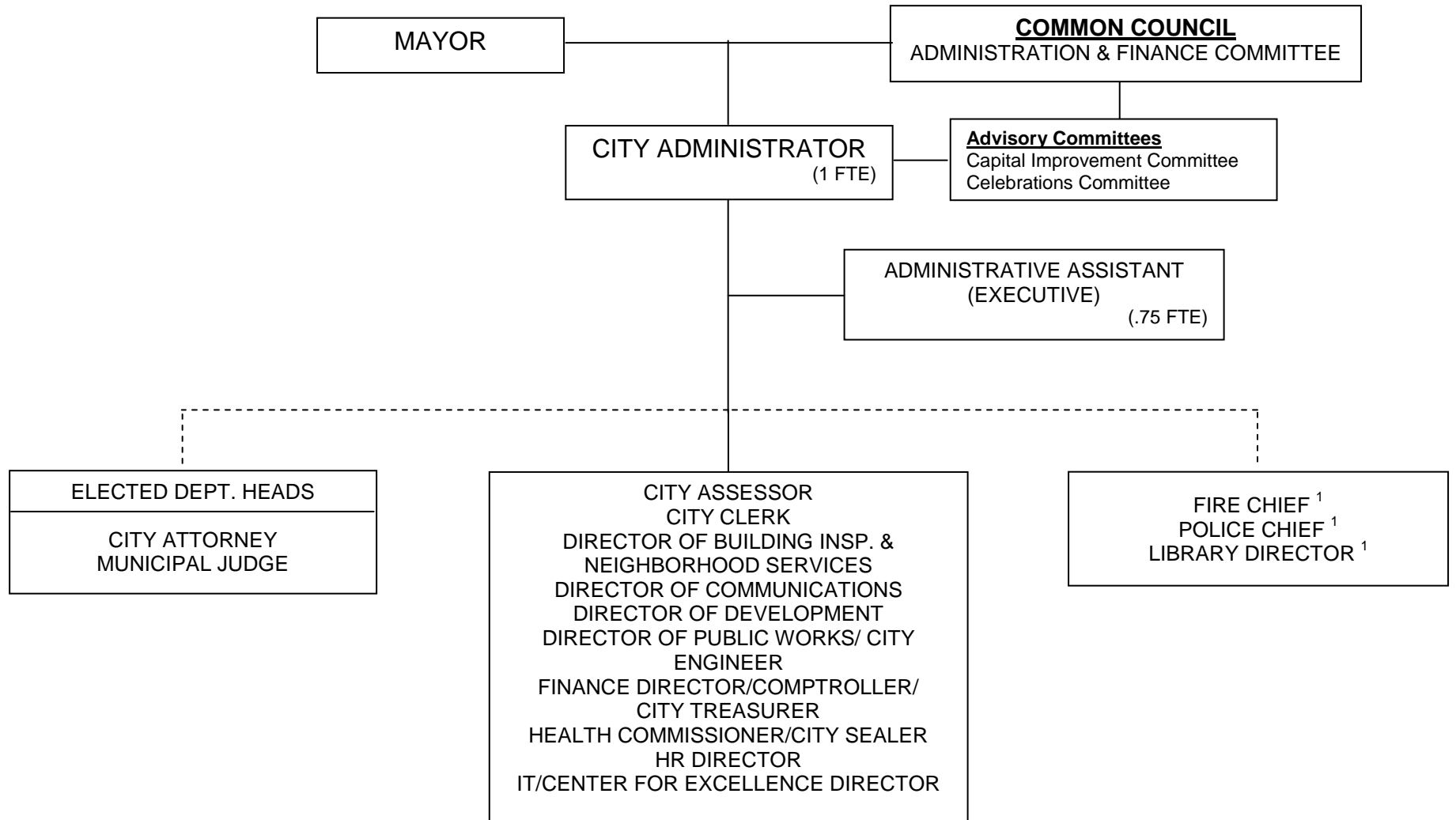
CITY FUNDED FTEs: 5.75

**ORGANIZATIONAL CHART
BUILDING INSPECTIONS AND NEIGHBORHOOD SERVICES**



CITY FUNDED FTEs: 12.95
OTHER FUNDING SOURCES FTEs: 1.8

**ORGANIZATIONAL CHART
CITY ADMINISTRATOR**

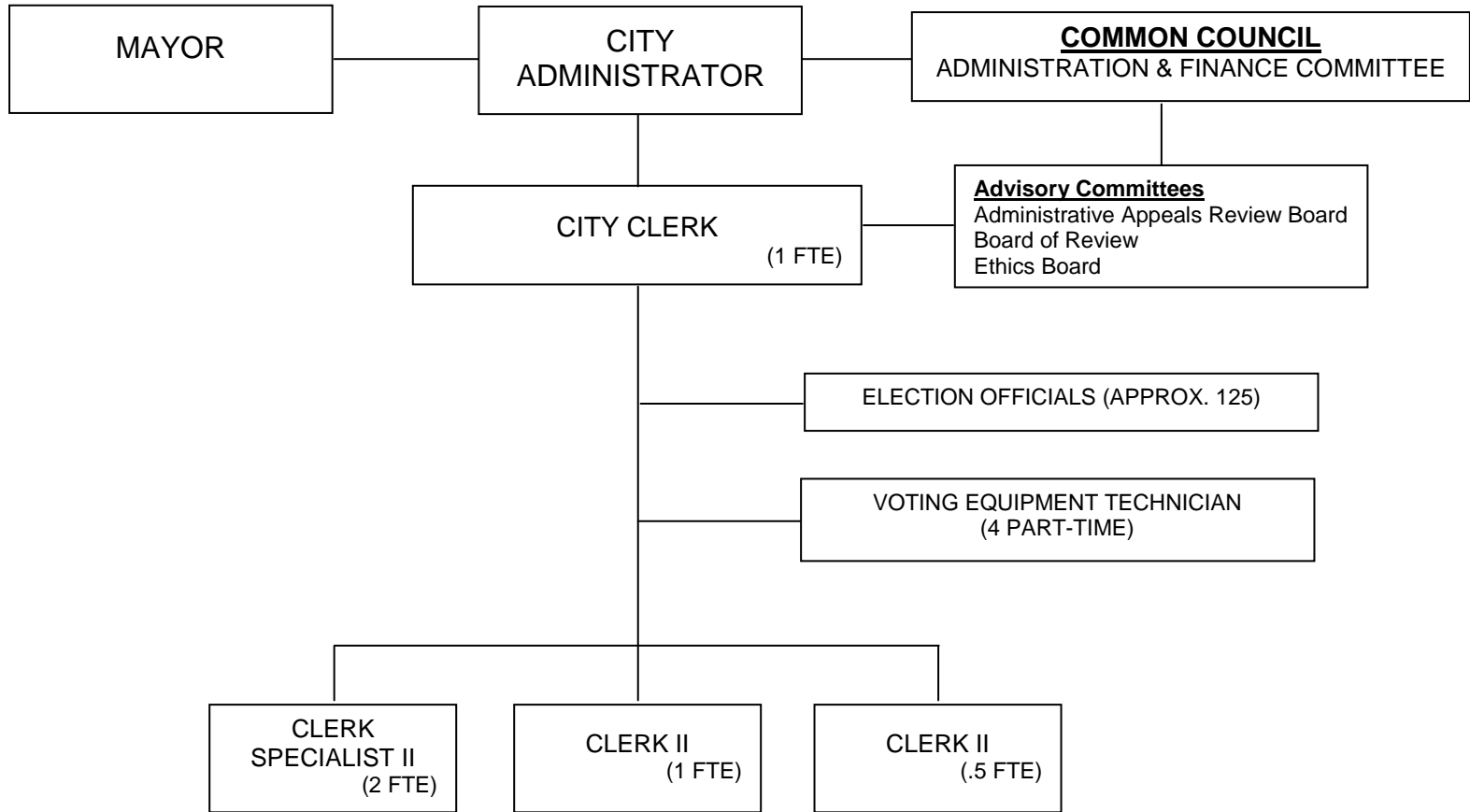


¹ Reports directly to Police & Fire Commission and Library Board respectively.

Note: Solid lines indicate lines of policy and program authority; dashed lines indicate lines of administrative and financial authority.

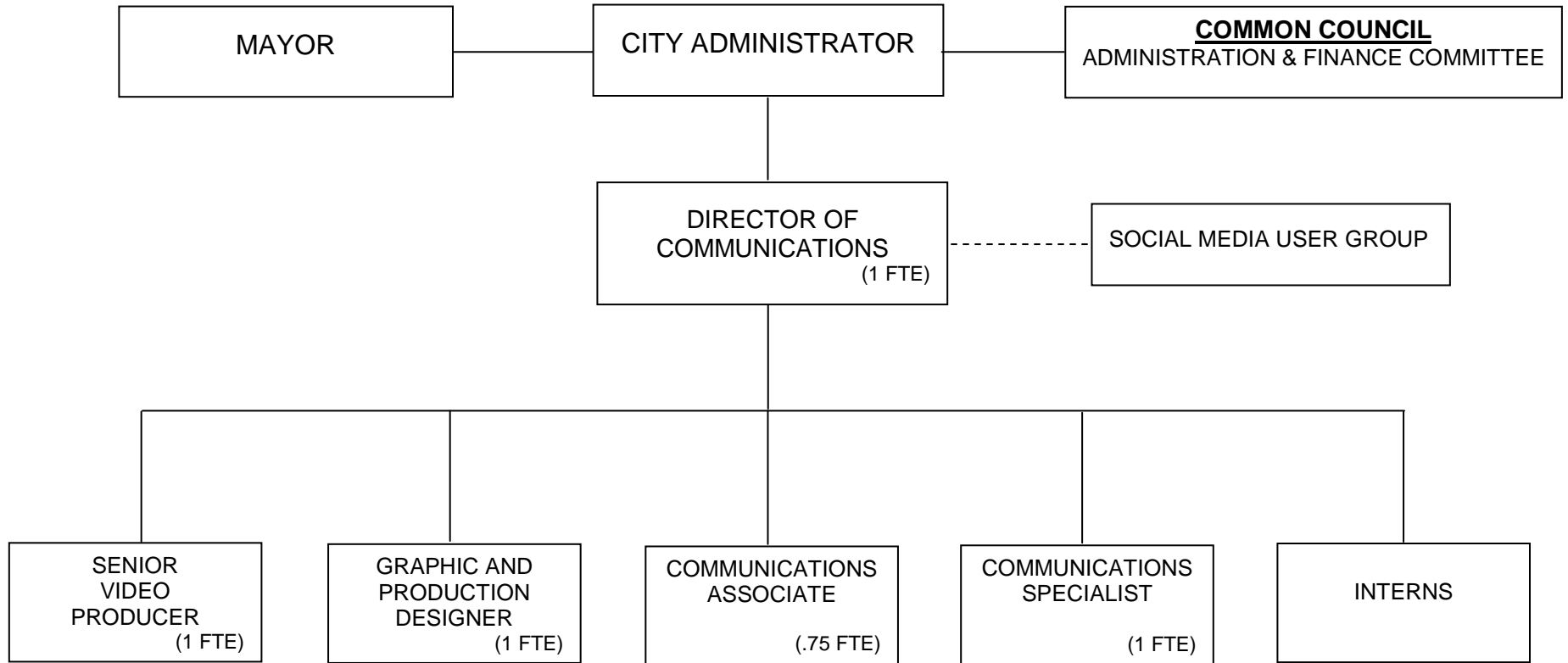
CITY FUNDED FTEs: 1.75

**ORGANIZATIONAL CHART
CLERK**



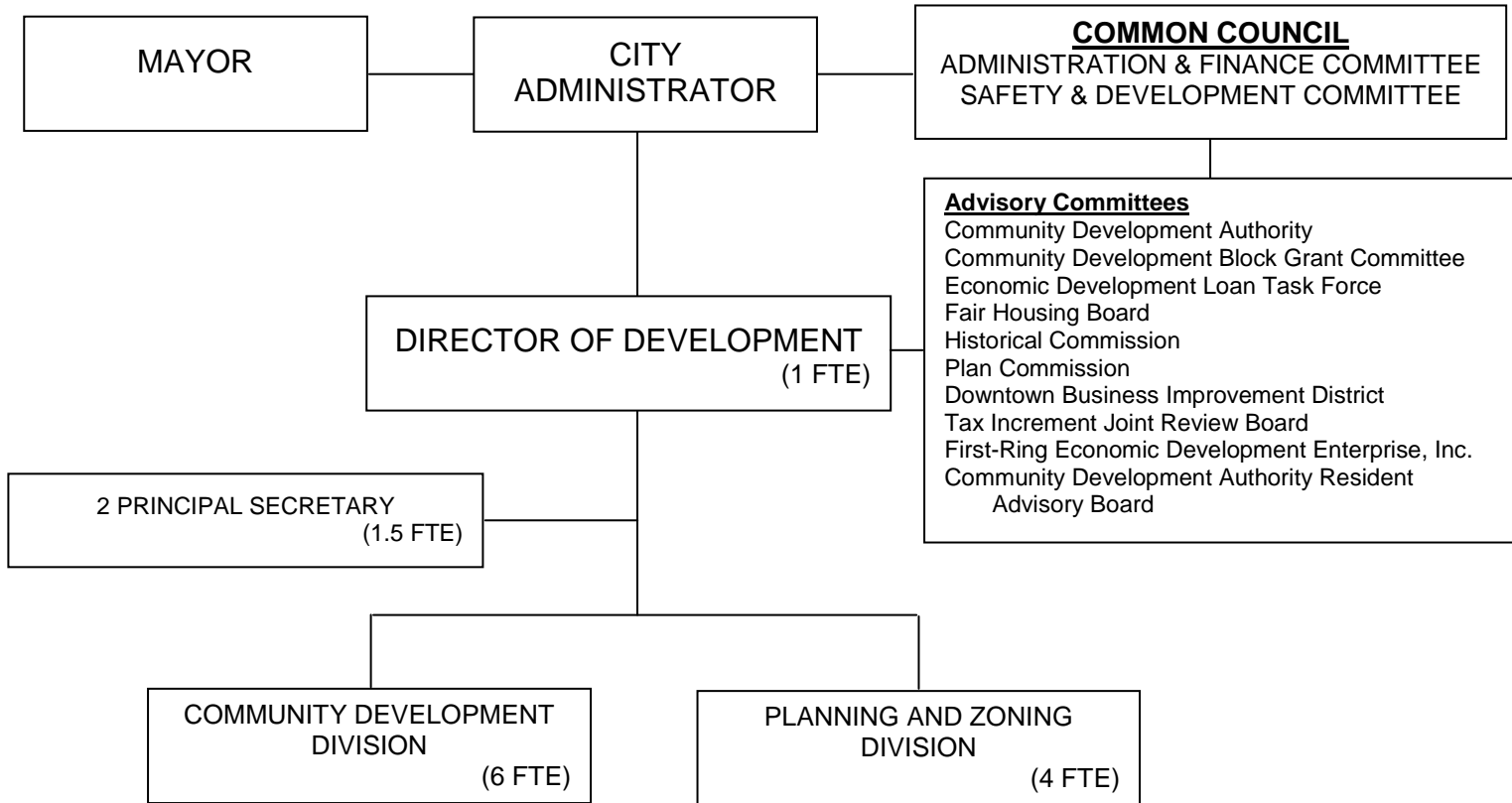
CITY FUNDED FTEs: 4.5

**ORGANIZATIONAL CHART
COMMUNICATIONS**



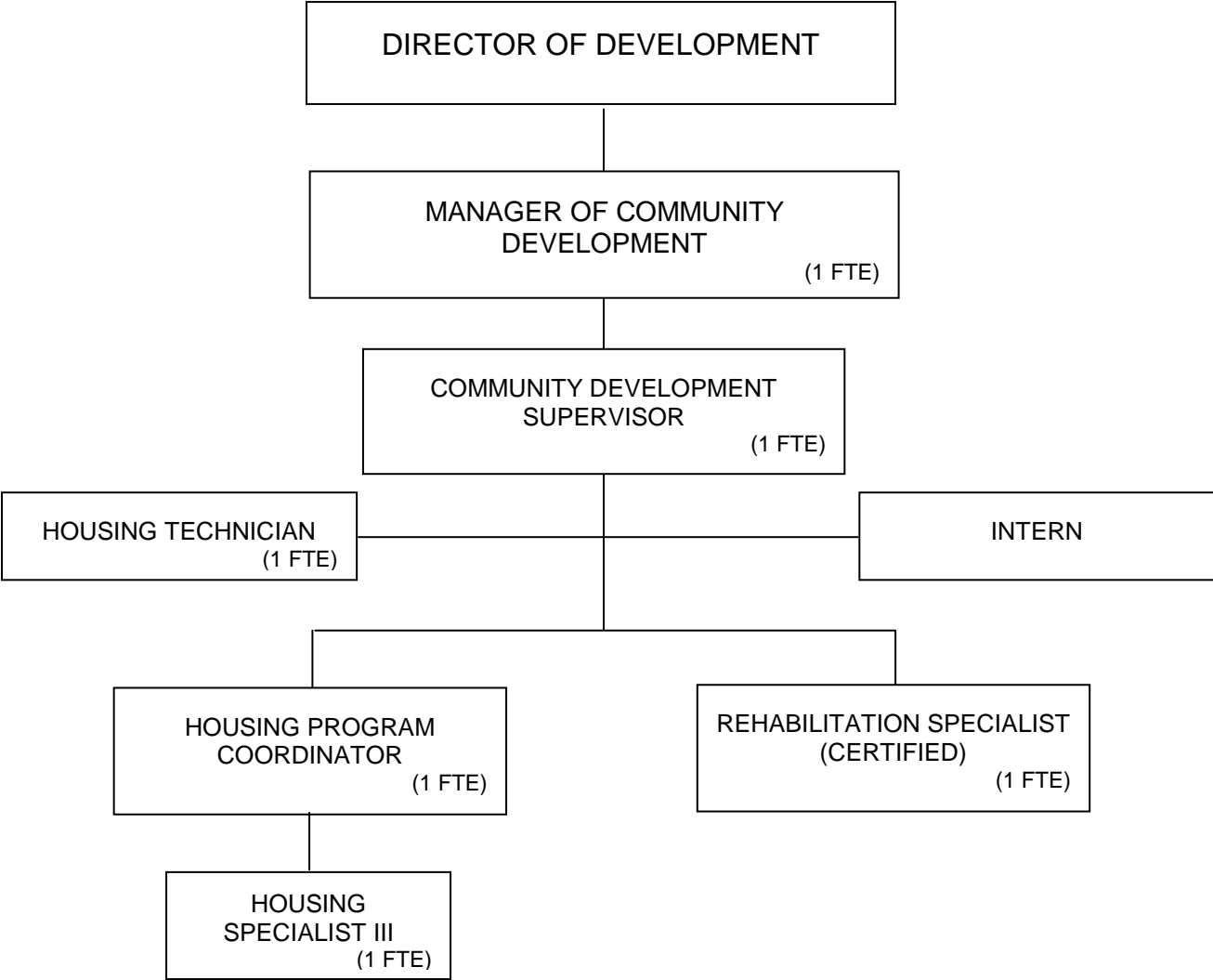
CITY FUNDED FTEs: 1.75
OTHER FUNDING SOURCES FTEs: 3.00

**ORGANIZATIONAL CHART
DEVELOPMENT**



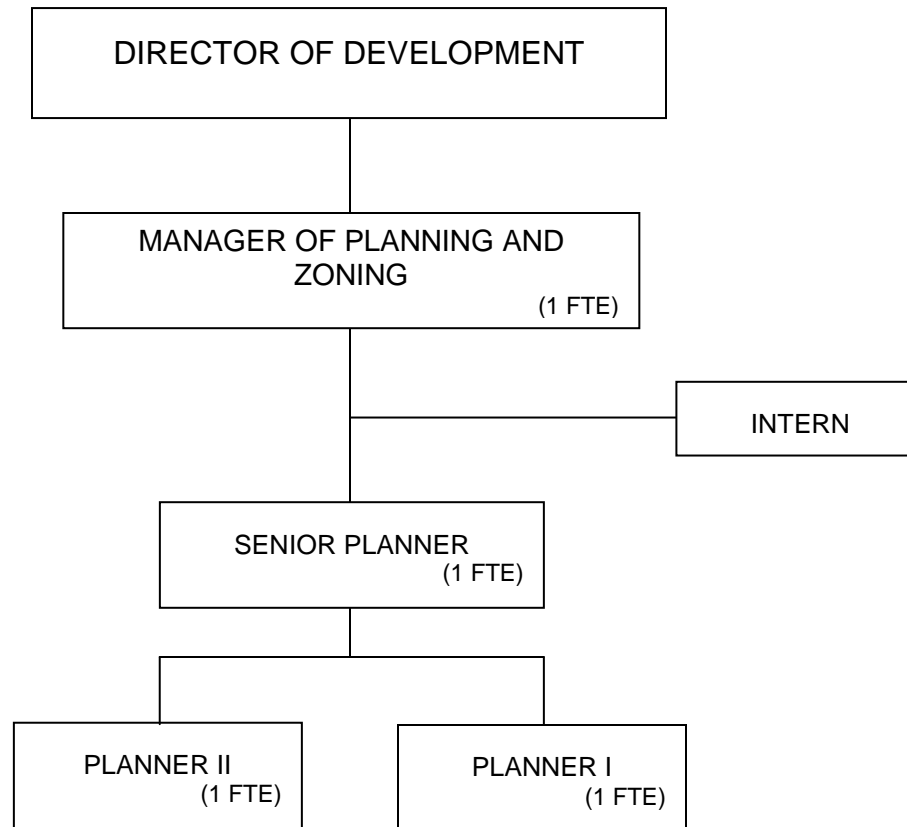
CITY FUNDED FTEs: 3.16
OTHER FUNDING SOURCES FTEs: 10.79

**ORGANIZATIONAL CHART
COMMUNITY DEVELOPMENT**

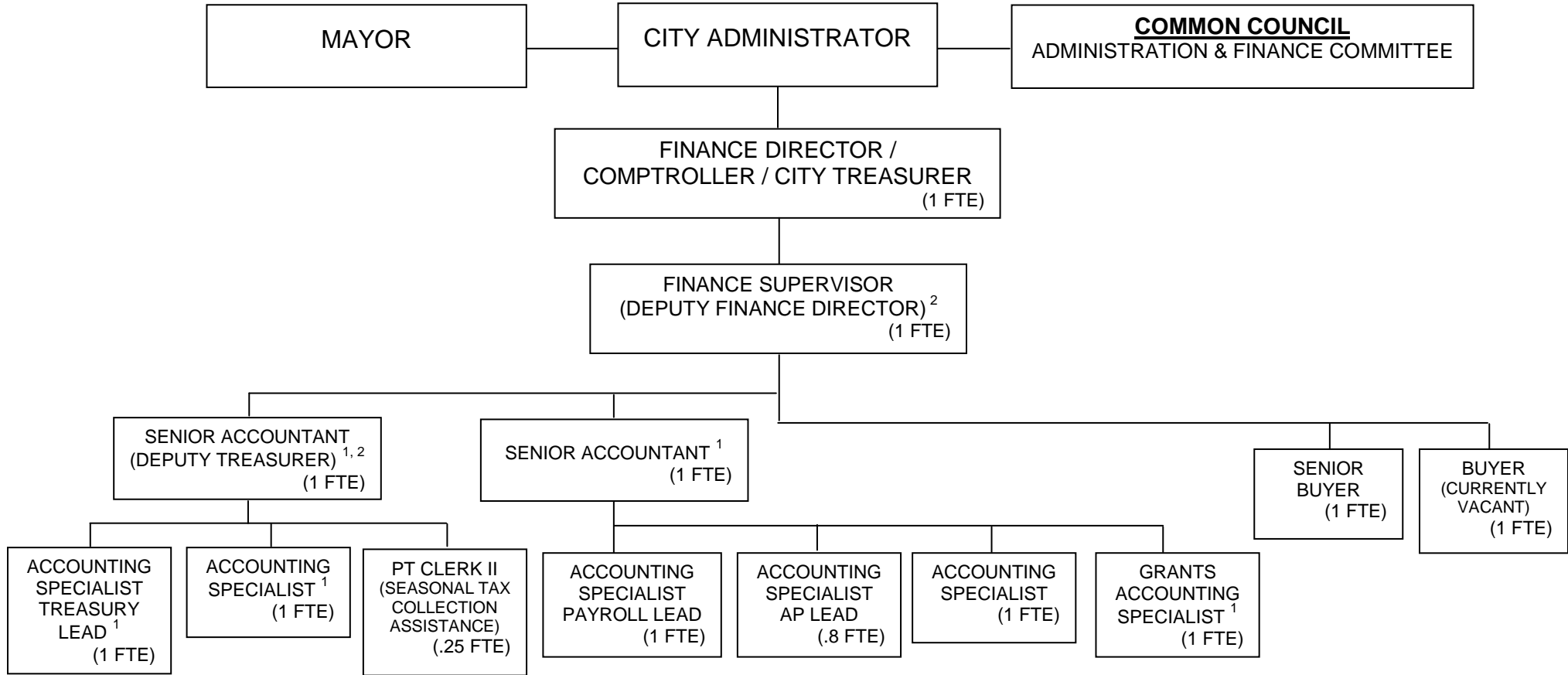


NOTE: Other personnel working in support of the Community Development Division are not included in this chart, however are funded by the Community Development Division (e.g., Grants Accounting Specialist, Finance Department: 0.95).

**ORGANIZATIONAL CHART
PLANNING AND ZONING**



**ORGANIZATIONAL CHART
FINANCE DEPARTMENT**

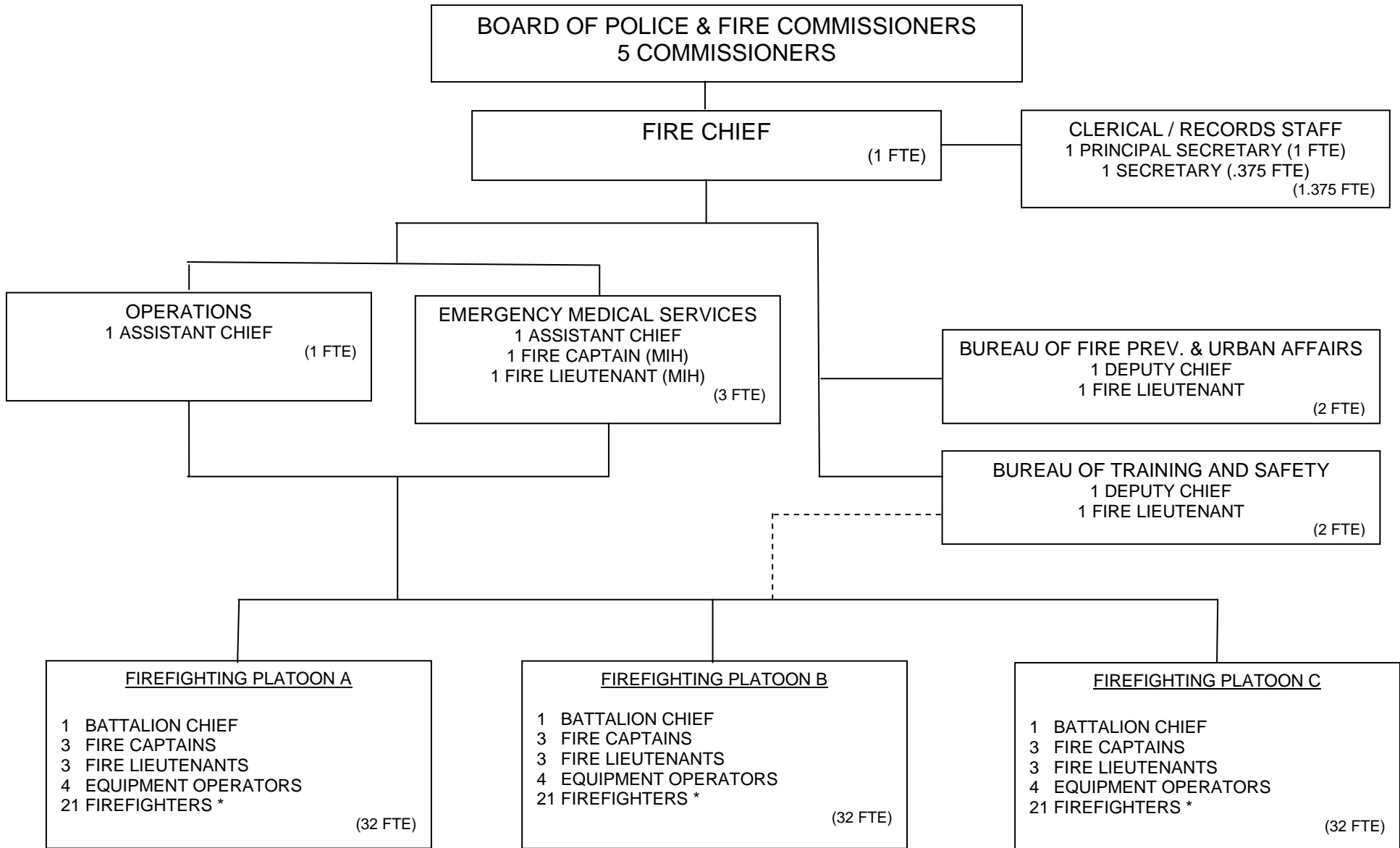


¹ Positions supported by various funding sources (e.g., various grants and utility funds; water, sewer, storm, solid waste; fund portions of the noted positions).

² Department restructuring and the reclassification of the ⁽²⁾ noted positions was initially proposed in 2015 and included in the 2016 budget, however delays resulted from the vacancy in the Finance Director position and the Compensation Study. It is anticipated that the completion of the Compensation Study will formally create the positions as identified here.

CITY FUNDED FTEs: 9.00
GRANTS FTEs: 1.00
UTILITY FTEs: 2.05

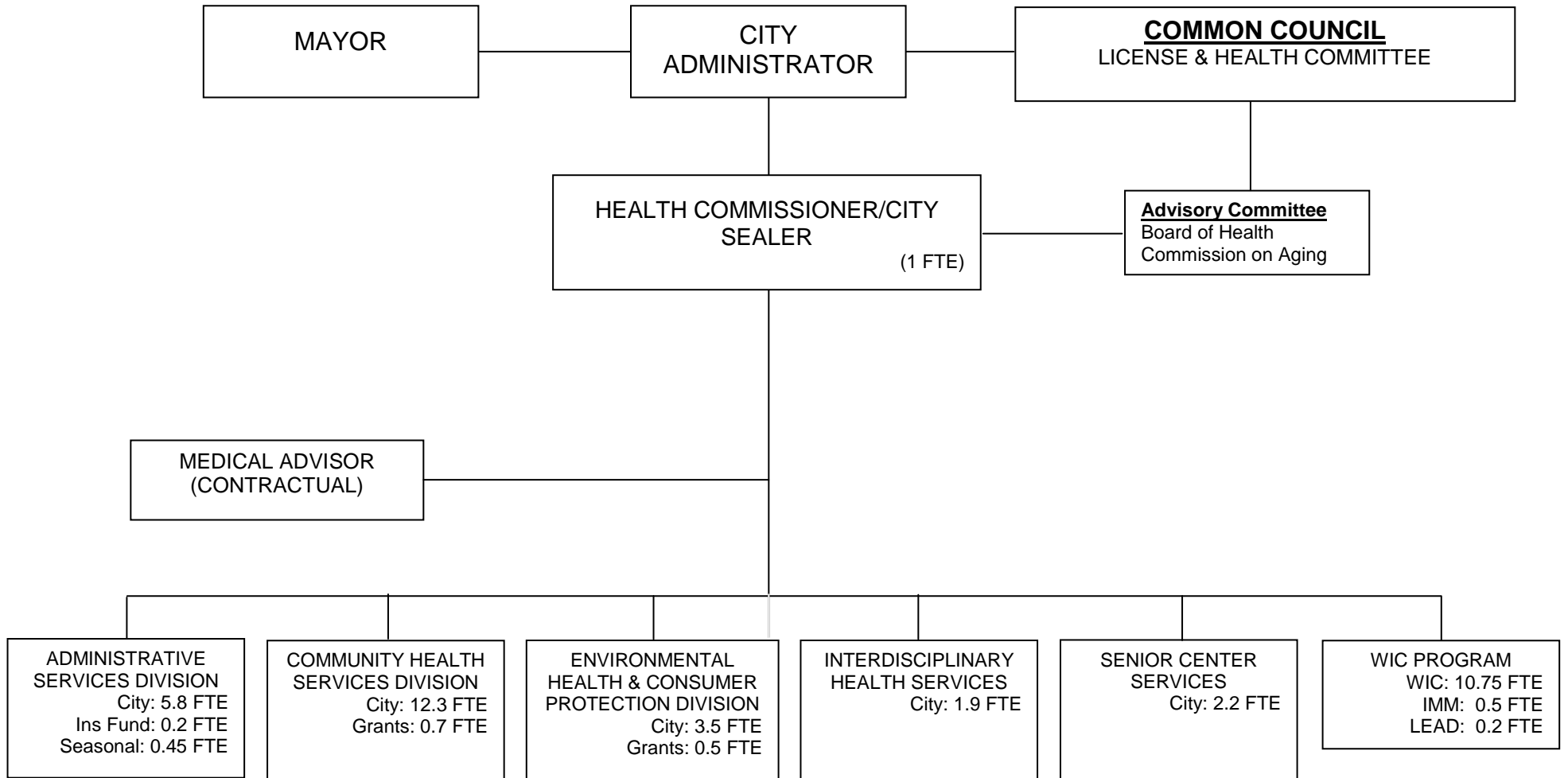
ORGANIZATIONAL CHART FIRE



* Includes 2 Firefighter Inspectors

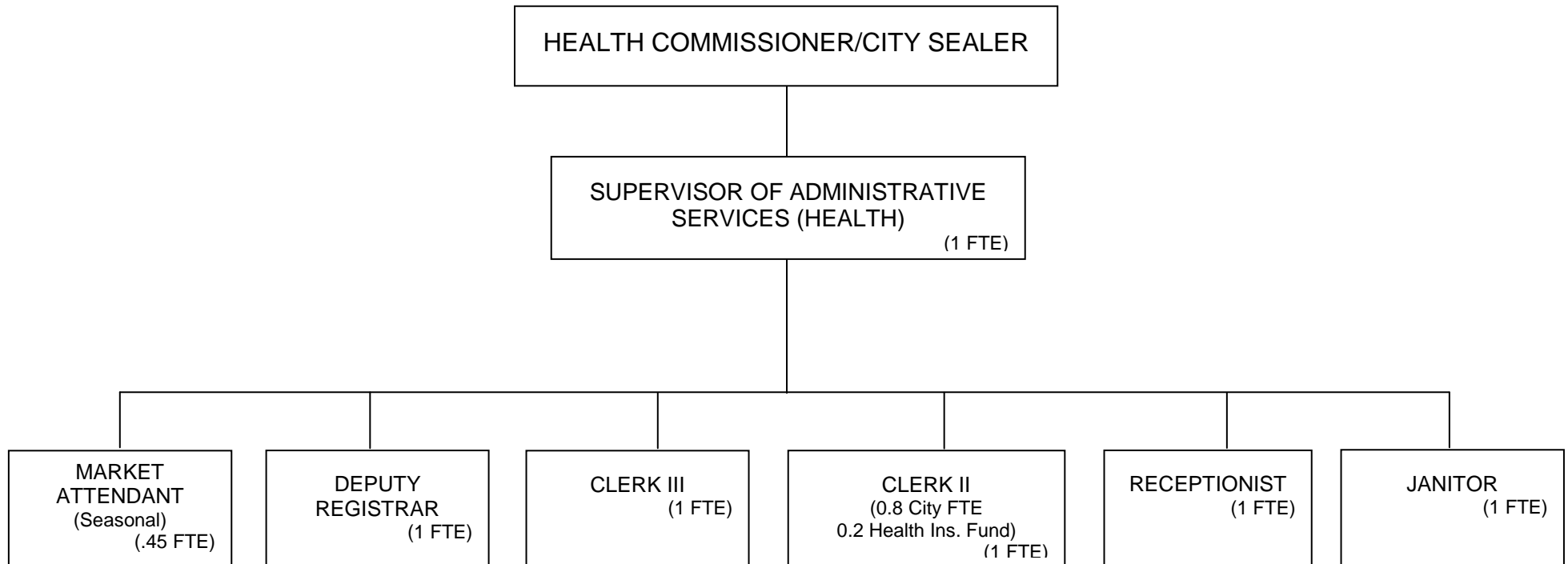
CITY FUNDED FTEs: 106
OTHER FUNDING SOURCES FTEs: .375

ORGANIZATIONAL CHART HEALTH

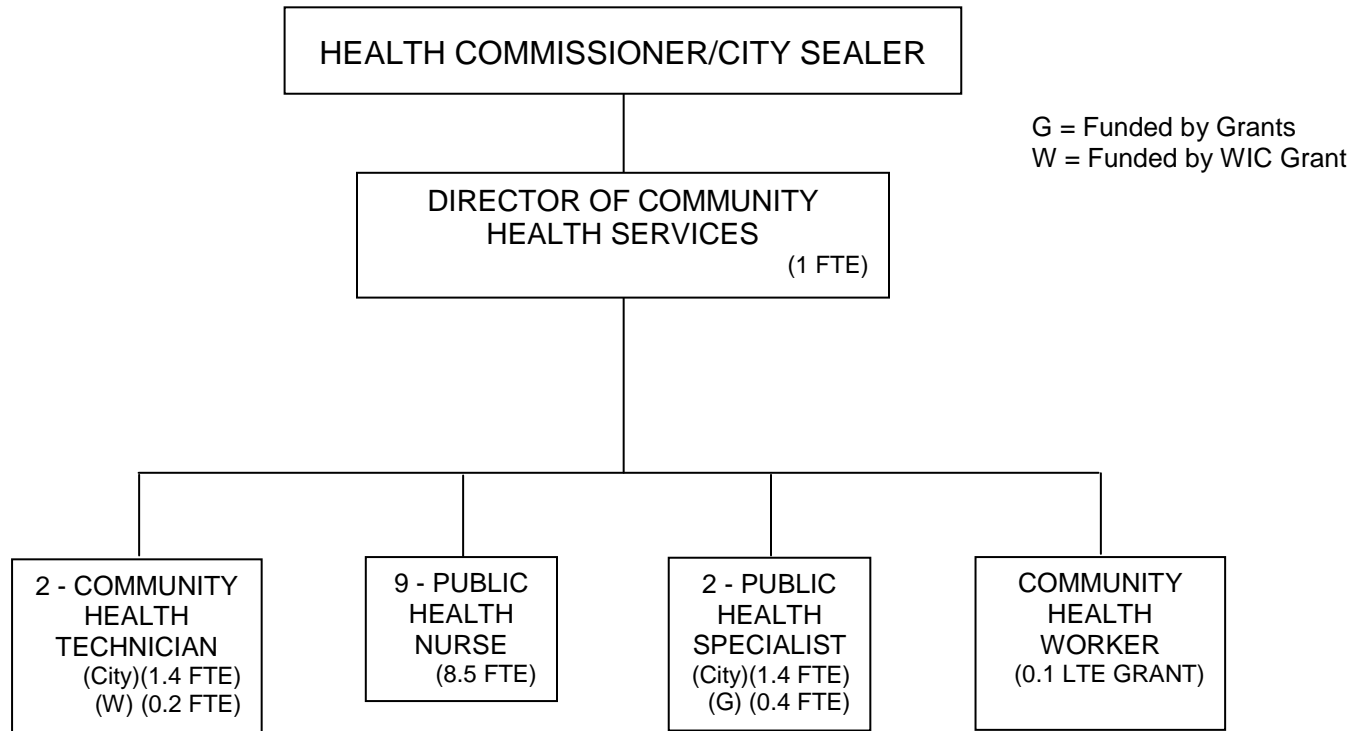


CITY FUNDED FTEs: 26.70
 GRANTS FTEs: 12.65
 INS FUND FTEs: 0.20
 SEASONAL FTEs: 0.45

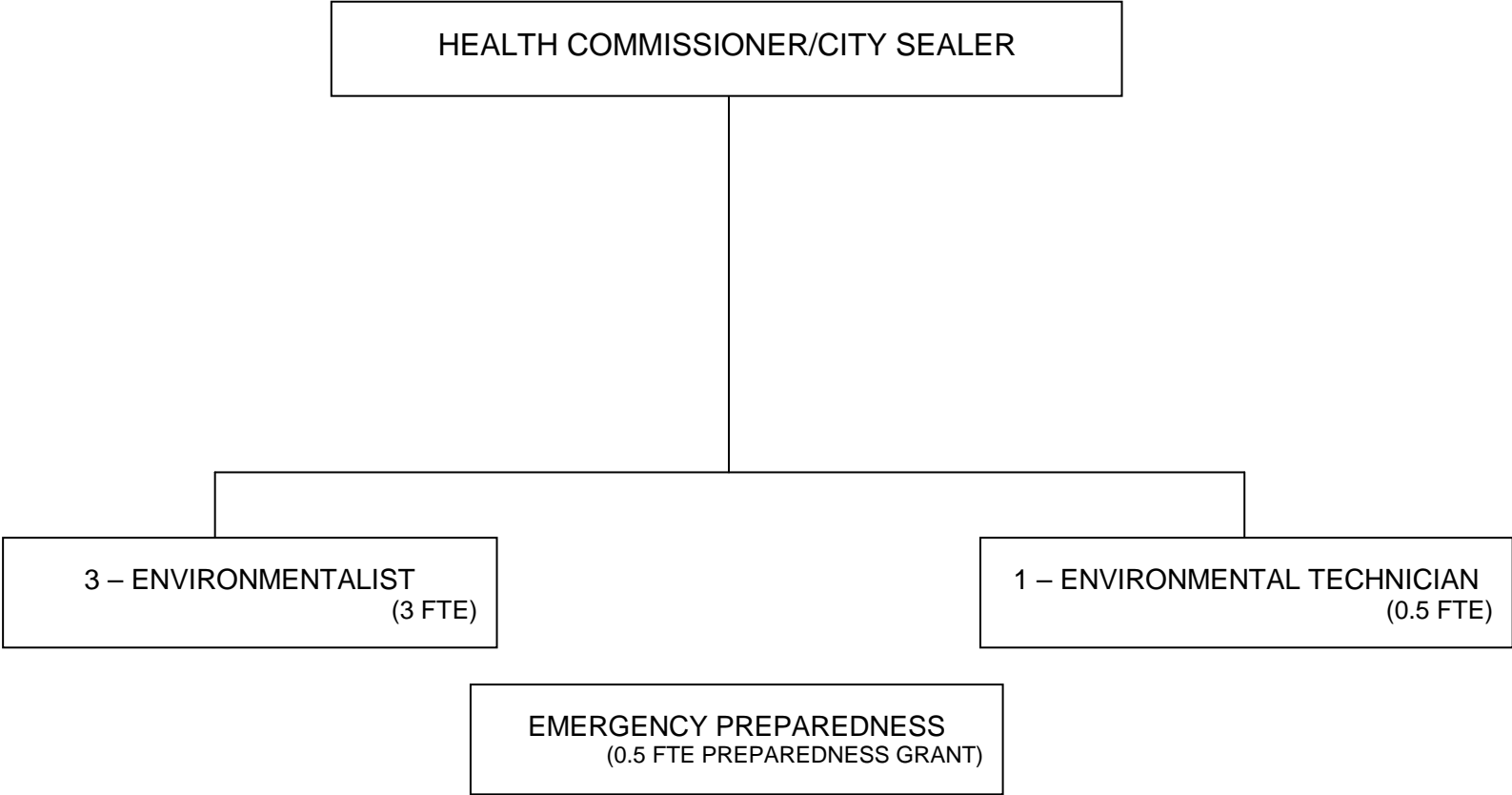
**ORGANIZATIONAL CHART
HEALTH
HEALTH ADMINISTRATIVE SERVICES**



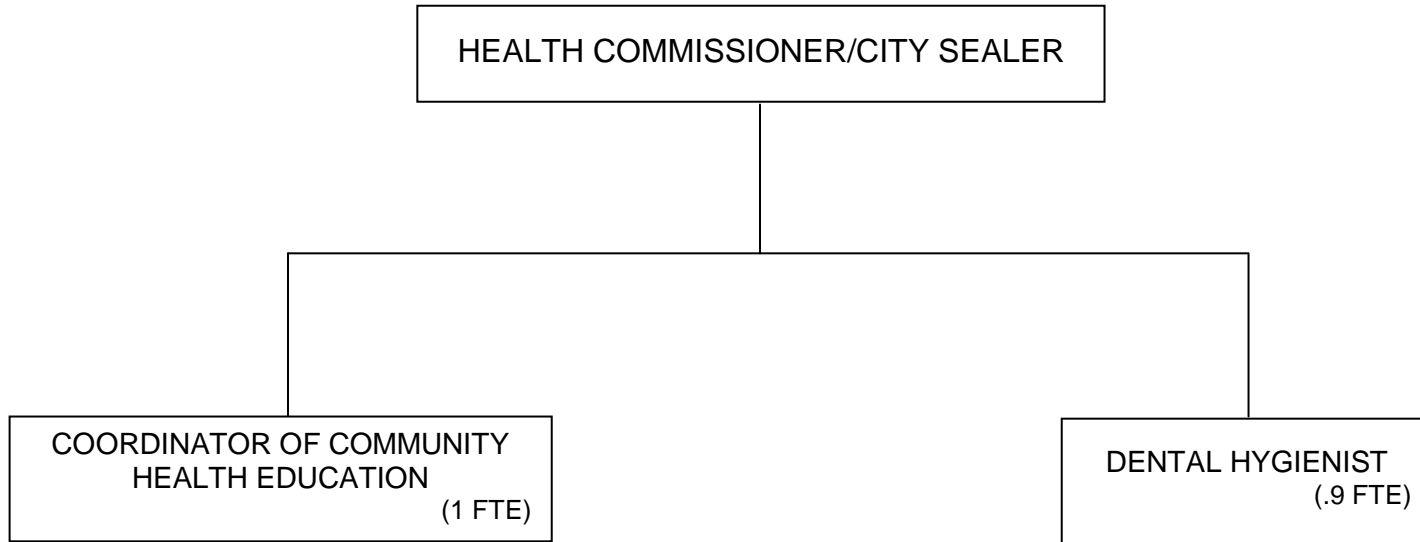
**ORGANIZATIONAL CHART
HEALTH
COMMUNITY HEALTH SERVICES**



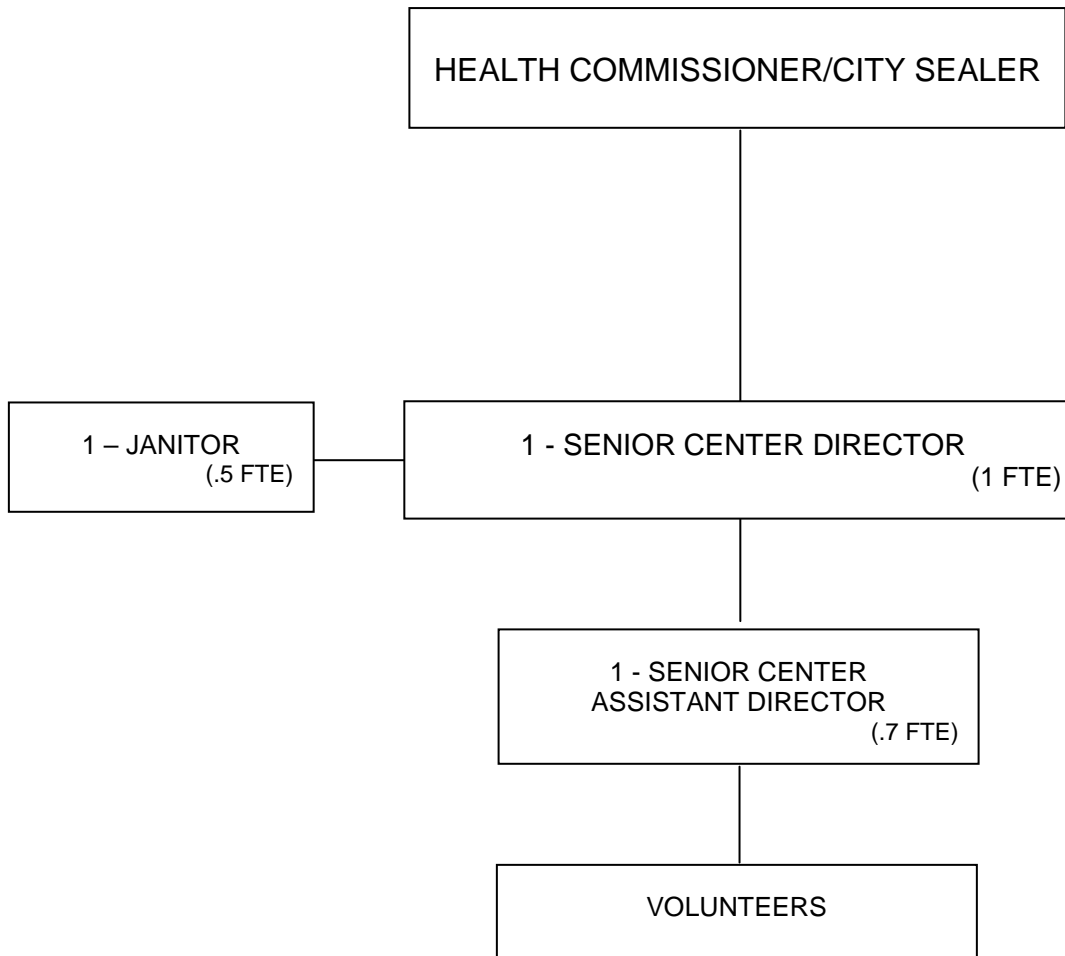
**ORGANIZATIONAL CHART
HEALTH
ENVIRONMENTAL HEALTH & CONSUMER PROTECTION**



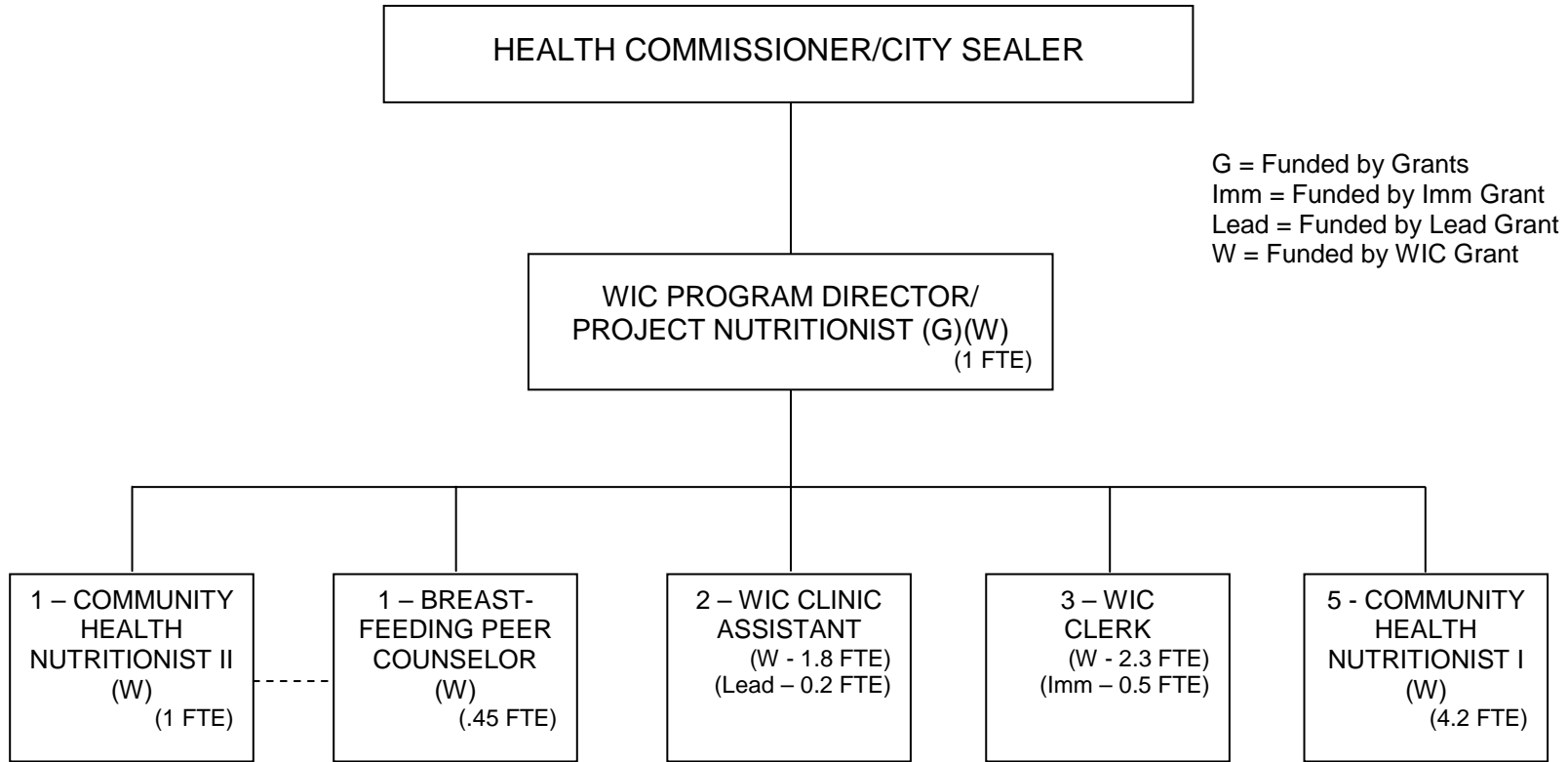
**ORGANIZATIONAL CHART
HEALTH
INTERDISCIPLINARY HEALTH SERVICES**



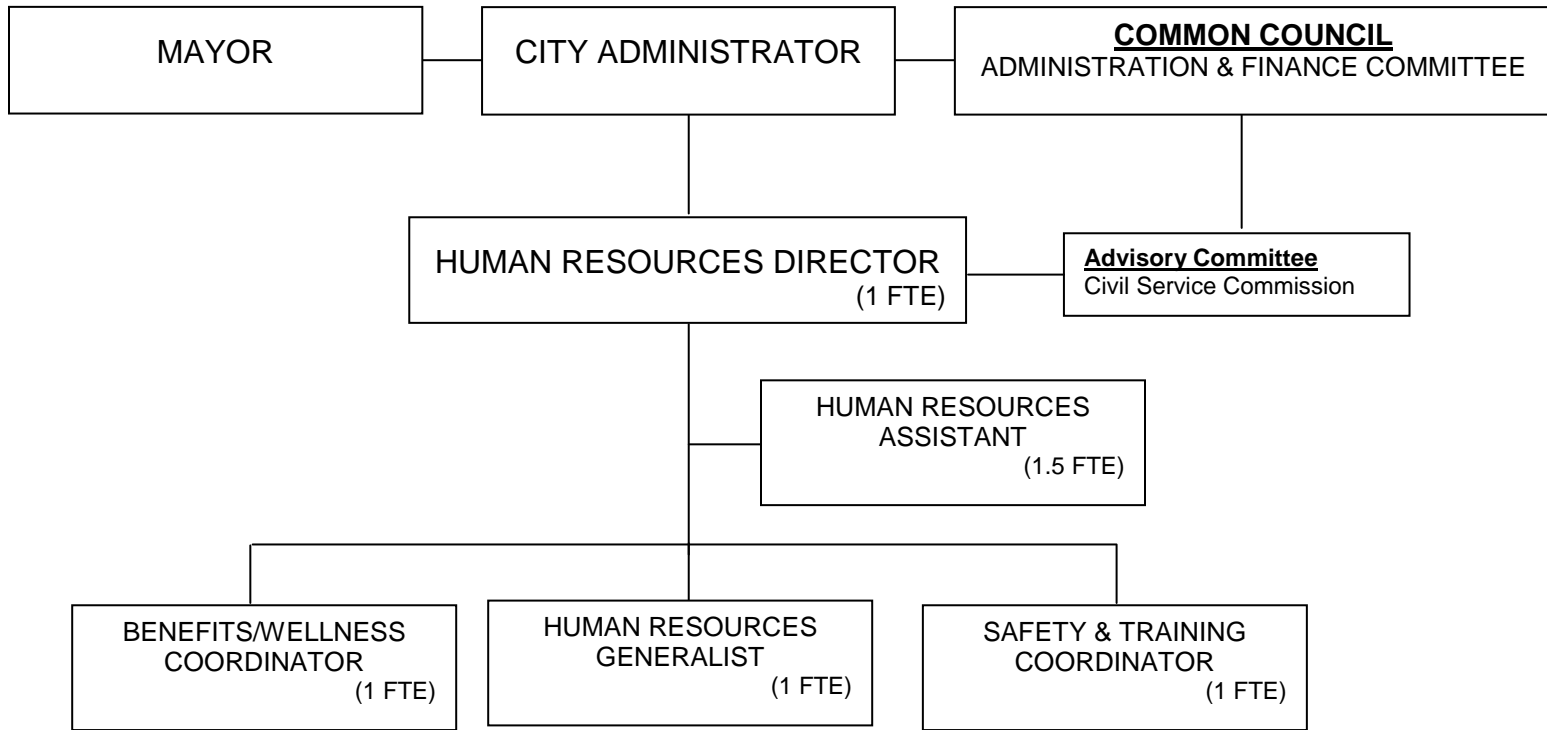
**ORGANIZATIONAL CHART
HEALTH
SENIOR CENTER**



**ORGANIZATIONAL CHART
HEALTH
WOMEN, INFANTS AND CHILDREN (WIC) PROGRAM**

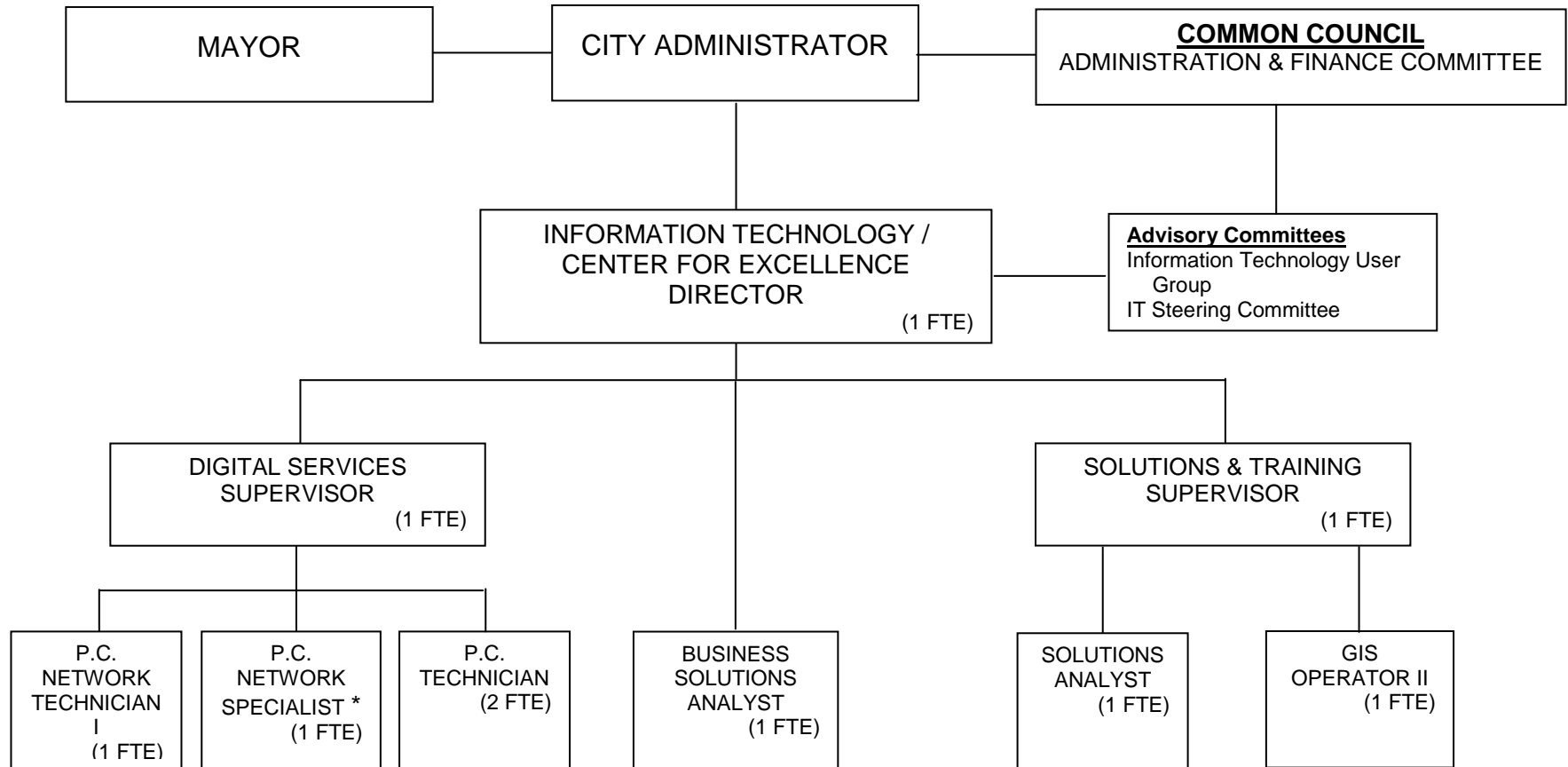


**ORGANIZATIONAL CHART
HUMAN RESOURCES**



CITY FUNDED FTEs: 4.5
OTHER FUNDING SOURCES FTEs: 1.0

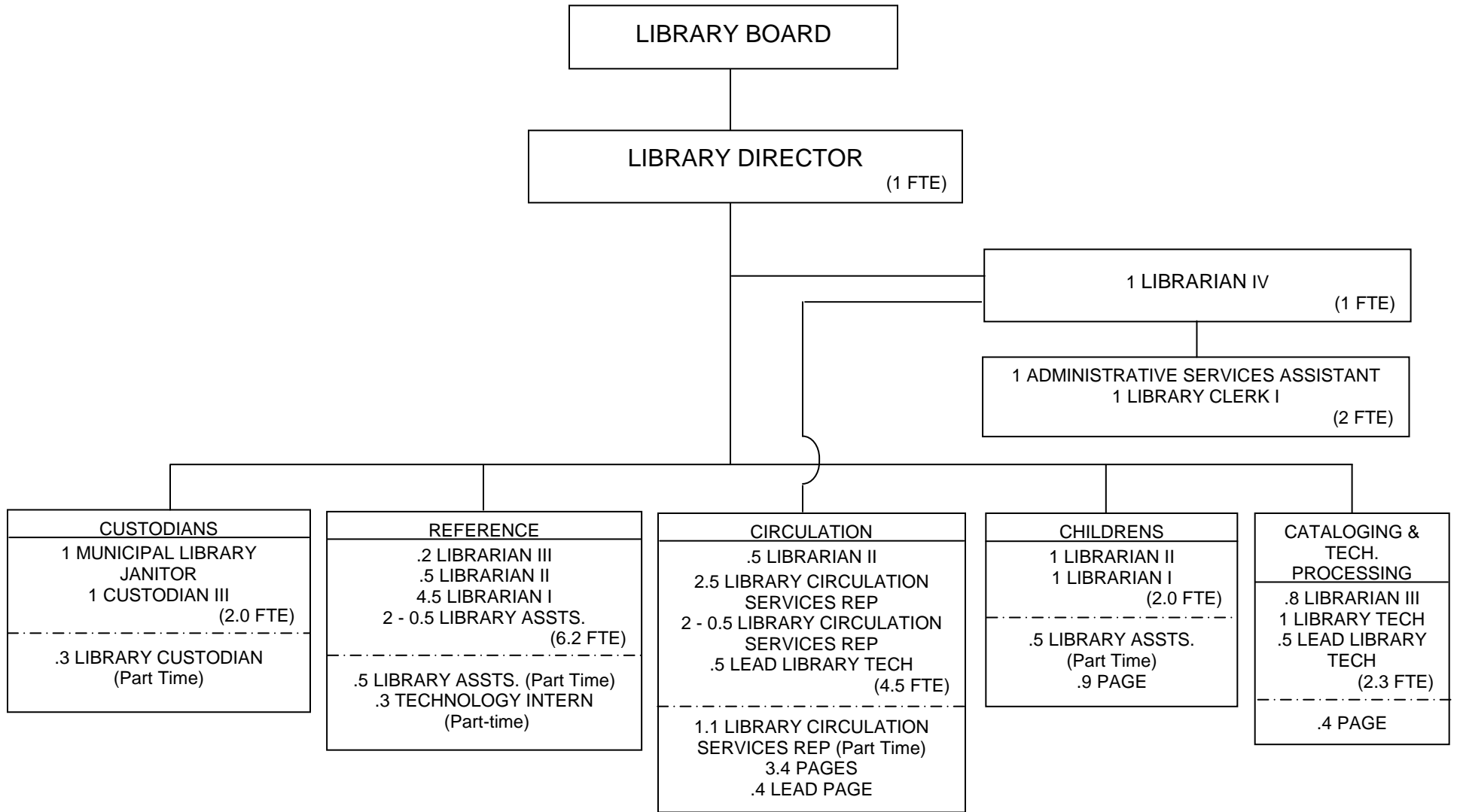
**ORGANIZATIONAL CHART
INFORMATION TECHNOLOGY / CENTER FOR EXCELLENCE**



* 1 P.C. Network Specialist to support Police Department

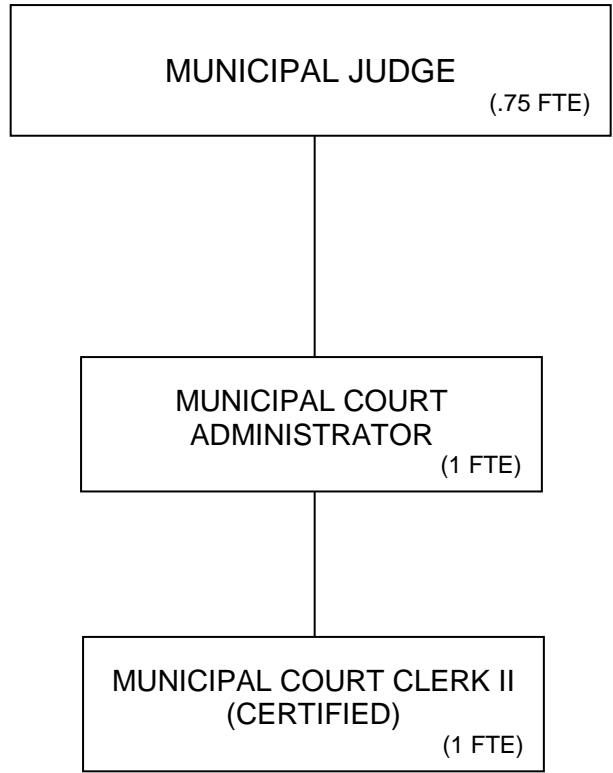
CITY FUNDED FTEs: 10.0

ORGANIZATIONAL CHART LIBRARY



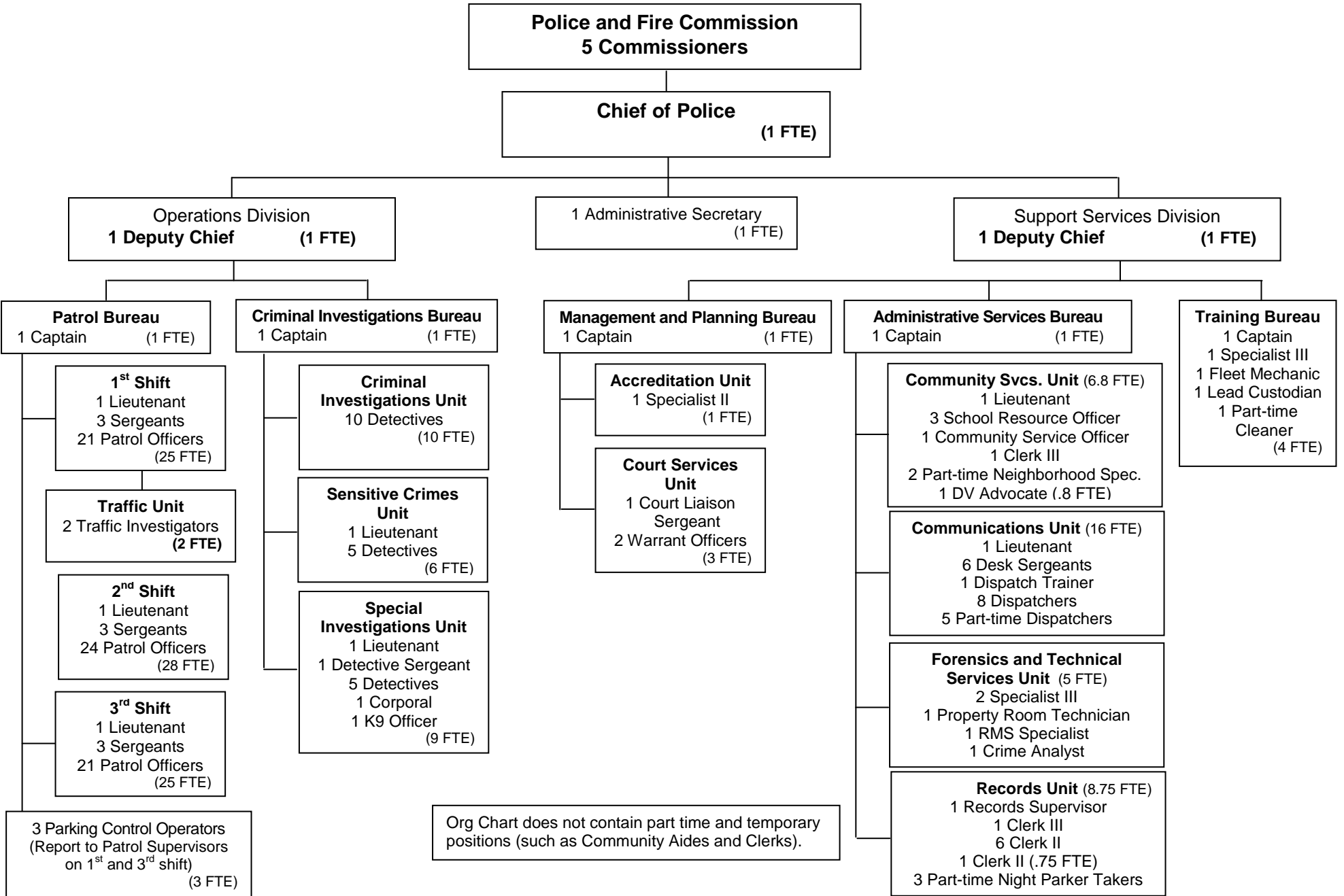
CITY FUNDED FTEs: 21.0
NON-BENEFITED (PART-TIME) FTEs: 7.8
TOTAL FTEs: 28.8

**ORGANIZATIONAL CHART
MUNICIPAL COURT**

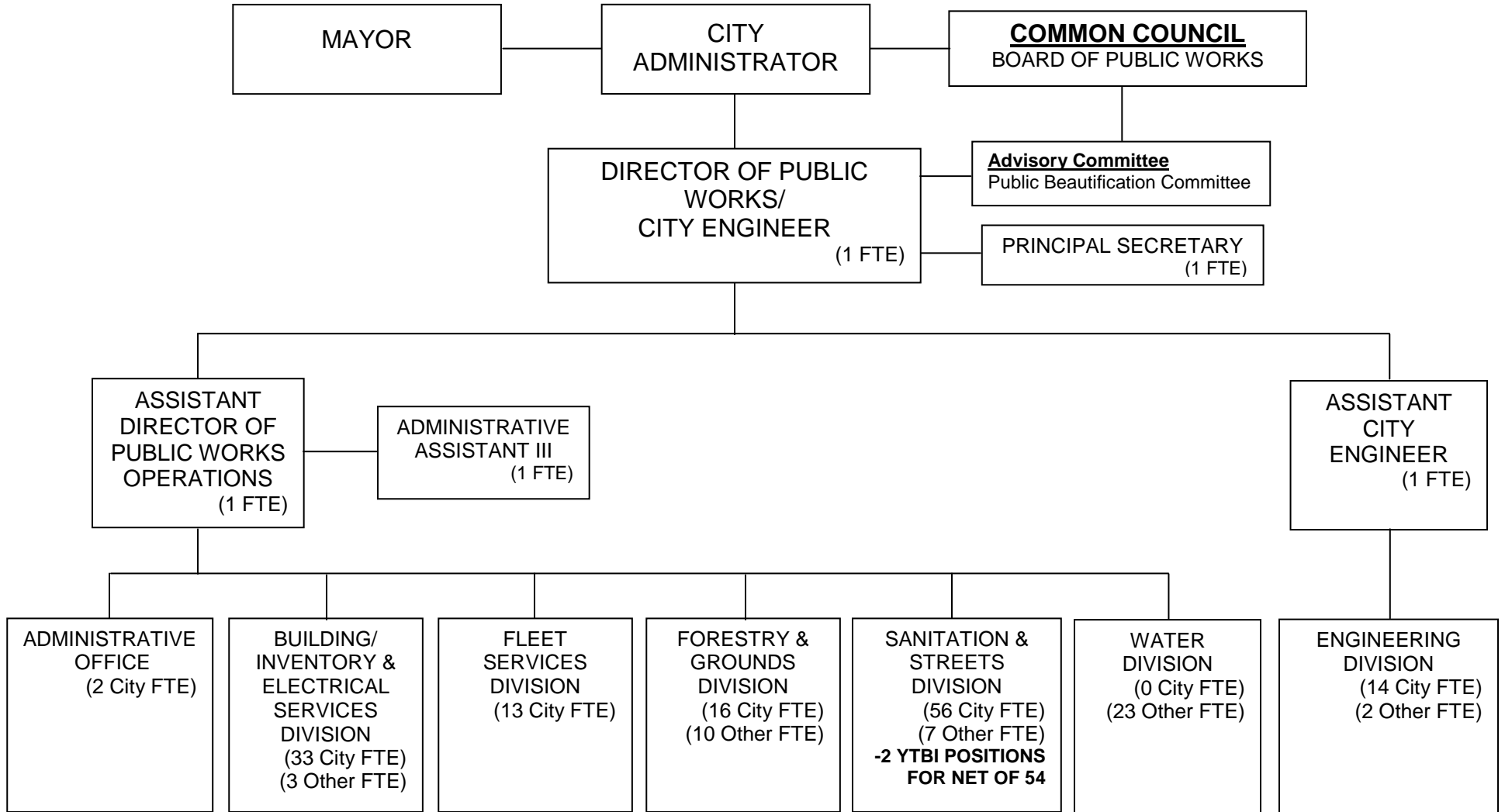


CITY FUNDED FTEs: 2.75

ORGANIZATIONAL CHART POLICE

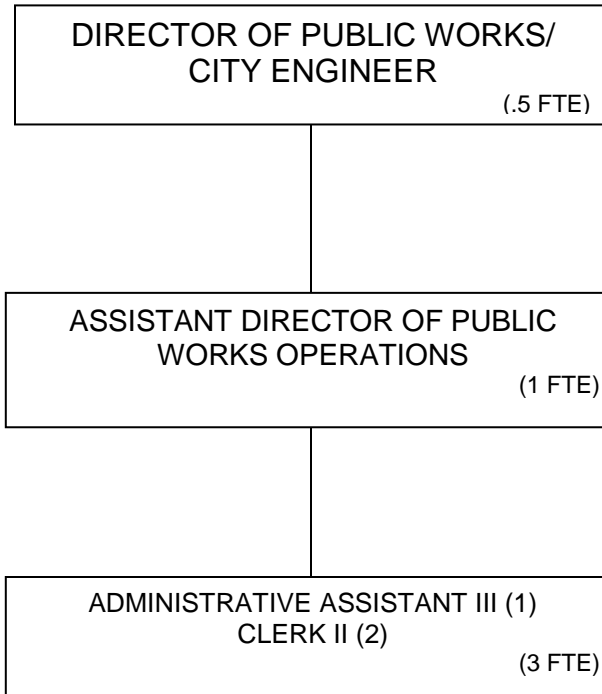


**ORGANIZATIONAL CHART
PUBLIC WORKS / ENGINEERING**



CITY FUNDED FTEs: 139
 -2 YTBI POSITIONS
ADJUSTED TOTAL: 137
 OTHER FUNDING SOURCES FTEs: 45

**ORGANIZATIONAL CHART
PUBLIC WORKS / ENGINEERING
ADMINISTRATIVE OFFICE**



**ORGANIZATIONAL CHART
PUBLIC WORKS / ENGINEERING
BUILDING / INVENTORY AND ELECTRICAL SERVICES**

DIRECTOR OF PUBLIC WORKS/
CITY ENGINEER

ASSISTANT DIRECTOR OF PUBLIC
WORKS OPERATIONS

BUILDING AND SIGN MAINTENANCE/
INVENTORY SUPERINTENDENT
(1 FTE)

1 - CLERK III
(1 FTE)

ELECTRICAL
SUPERINTENDENT
(1 FTE)

BUILDING & SIGN
LEAD PERSON
(1 FTE)

SIGN SHOP SECTION
PAINTER (1)
(1 FTE)

CARPENTRY SECTION
SENIOR CARPENTER (1)
CARPENTER (1)
(2 FTE)

CUSTODIAL SECTION
CUSTODIAN III (1)
MUNICIPAL YARD JANITOR (1)
LABORER (1)
PARK ATTENDANT (1)
(4 FTE)

INVENTORY SECTION
LEAD INVENTORY SERVICES
SPECIALIST (1)
INVENTORY SERVICES
SPECIALIST (2)
(3 FTE)

SIGN INSTALLATION SECTION
MAINTENANCE REPAIRER (5)
(5 FTE)

PLUMBING & HEATING
SECTION
PLUMBER (1)
HVAC/R TECHNICIAN (1)
(2 FTE)

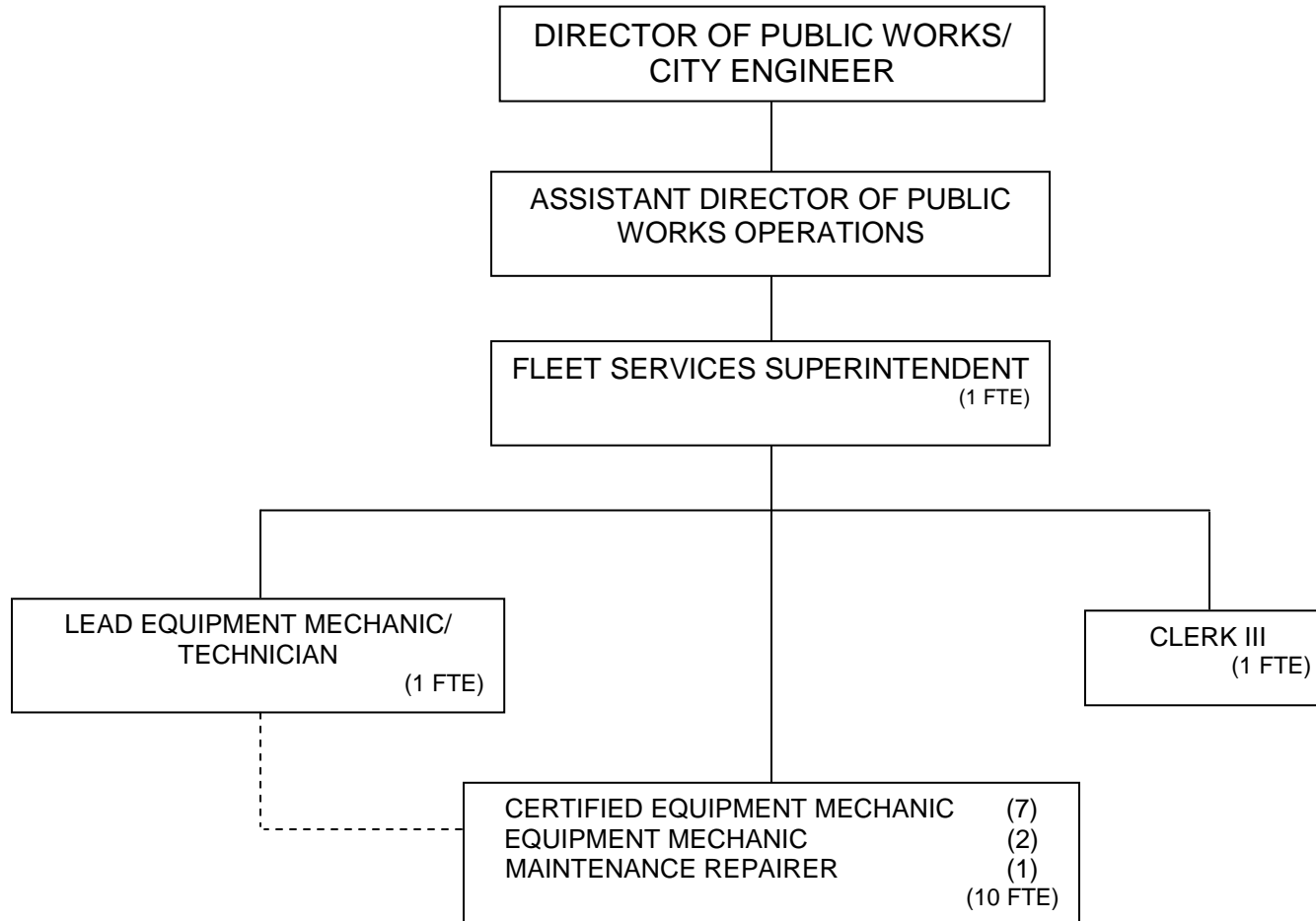
PAINTING SECTION
SENIOR PAINTER (1)
PAINTER I (1)
(2 FTE)

LEAD ELECTRICAL
MECHANIC
(CERTIFIED)
(1 FTE)

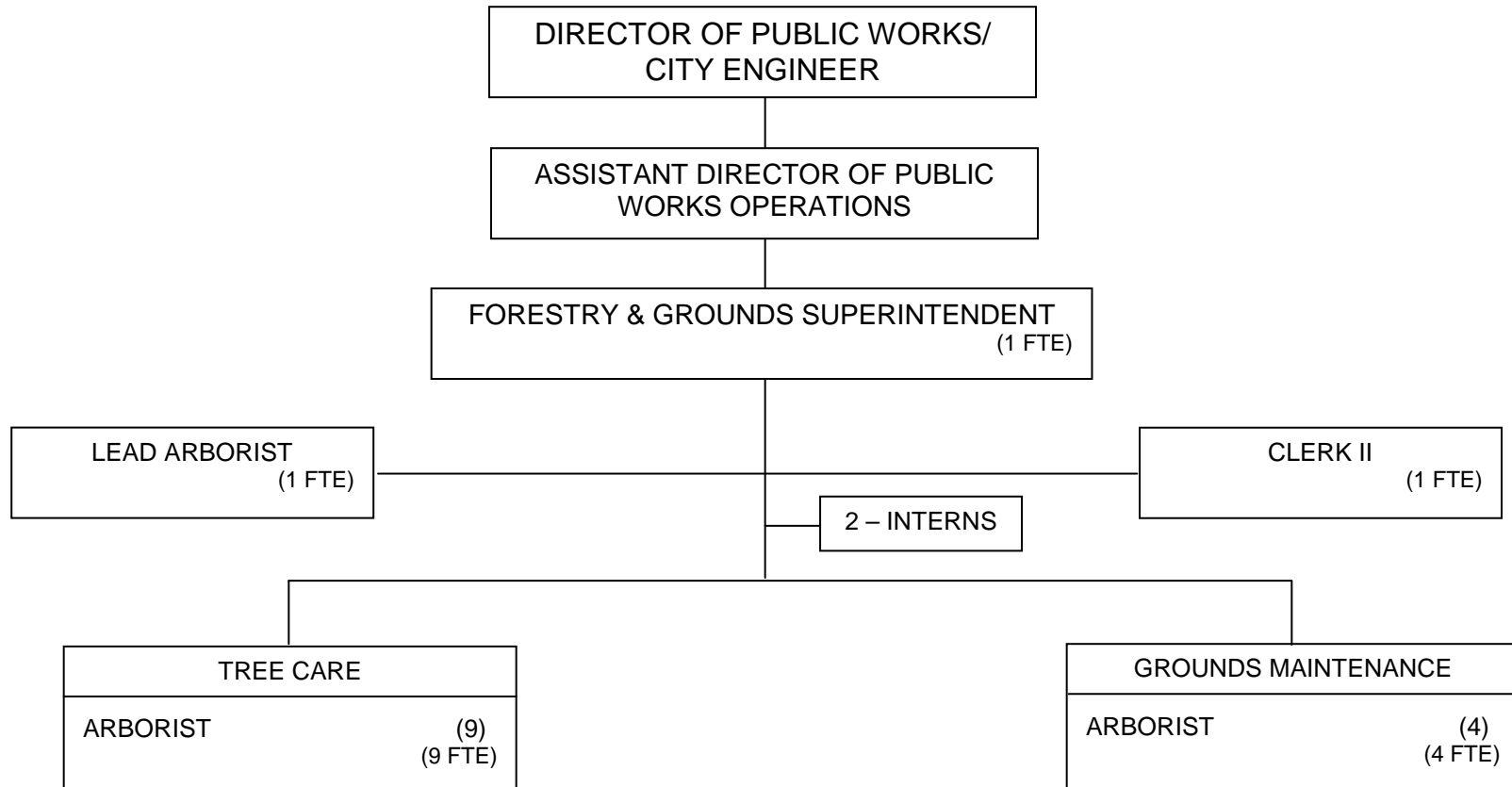
GENERAL OPERATION
CERTIFIED ELECTRICAL
MECHANIC II (2)
ELECTRICAL MECHANIC I (7)
(9 FTE)

Org Chart does not reflect the seasonal temporary laborer positions.

**ORGANIZATIONAL CHART
PUBLIC WORKS / ENGINEERING
FLEET SERVICES**

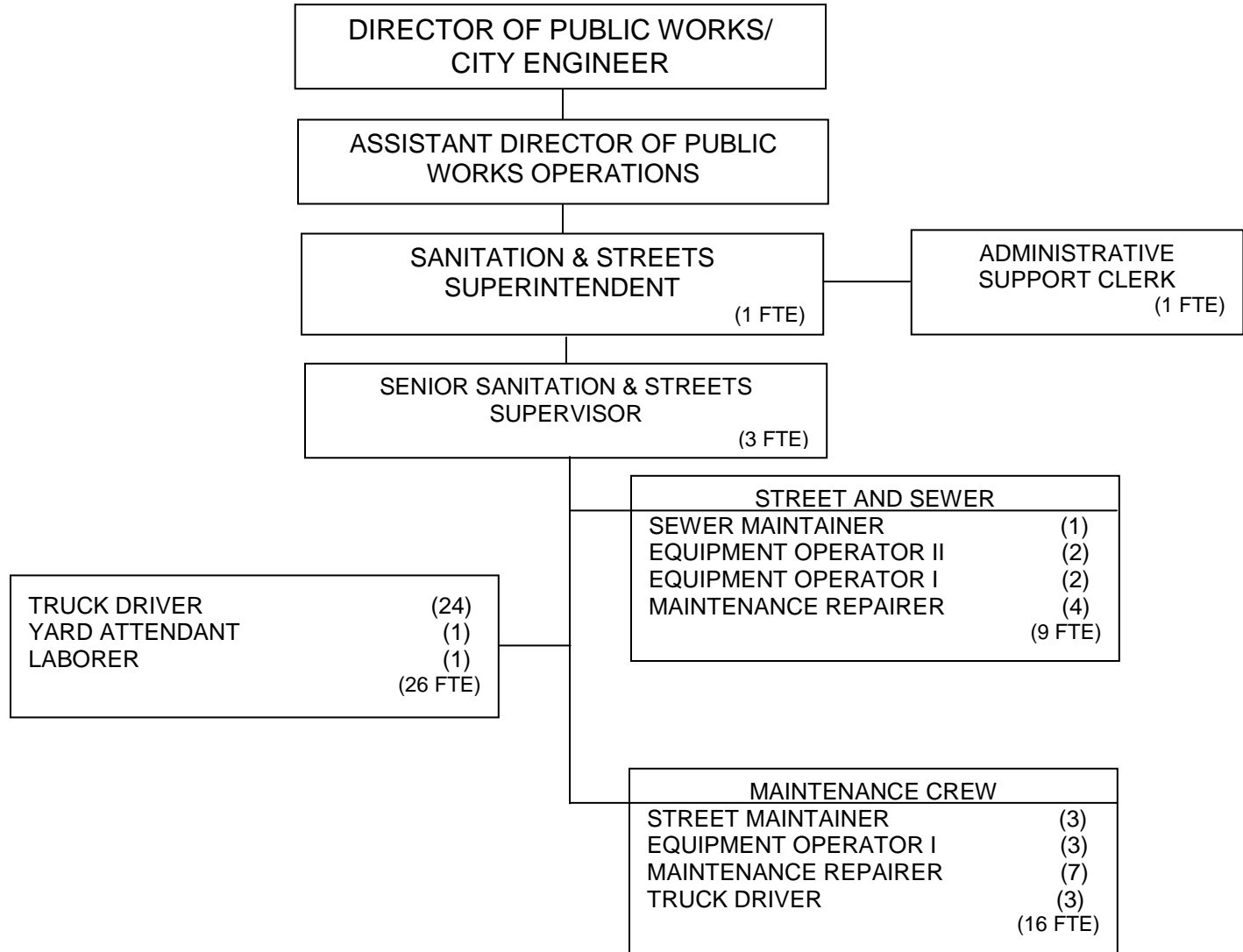


**ORGANIZATIONAL CHART
PUBLIC WORKS / ENGINEERING
FORESTRY & GROUNDS**



Org Chart does not reflect the seasonal temporary laborer positions.

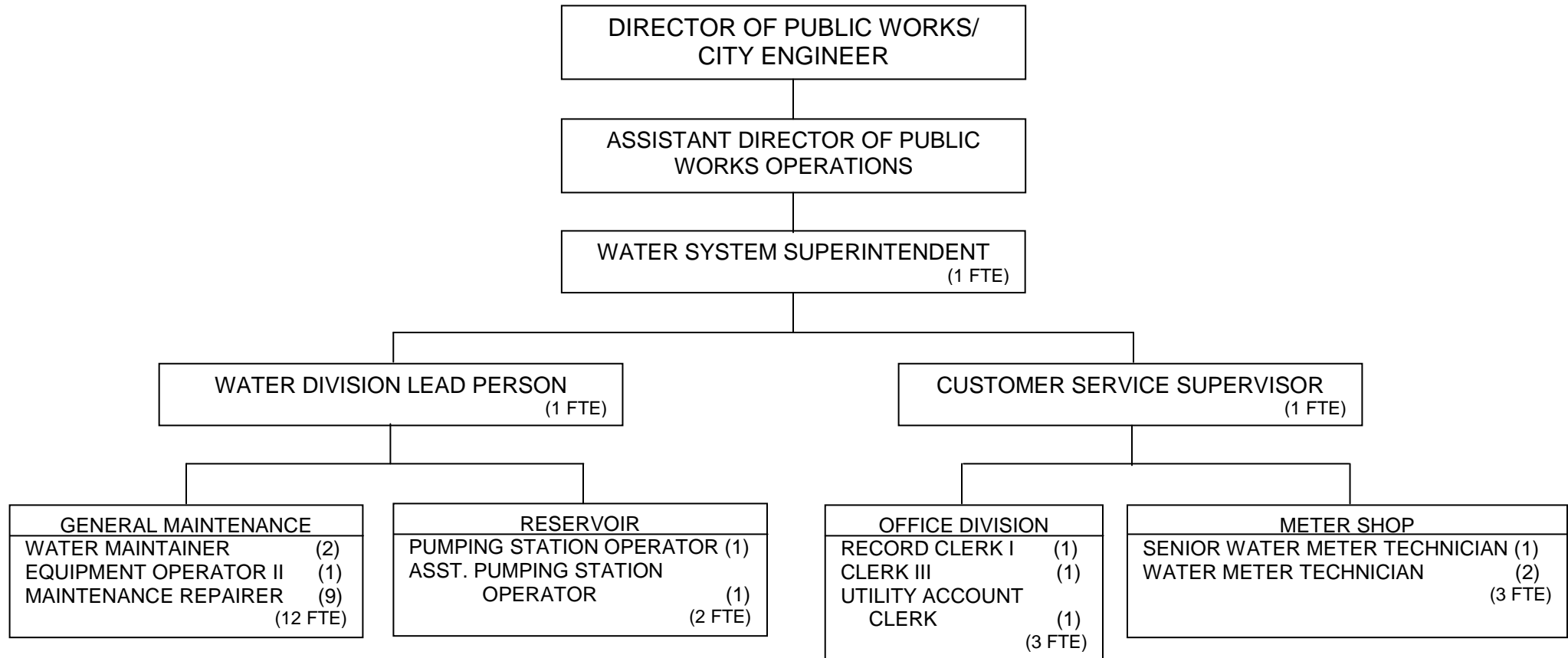
**ORGANIZATIONAL CHART
PUBLIC WORKS / ENGINEERING
SANITATION & STREETS**



Org Chart does not reflect the seasonal temporary laborer positions.

56 TOTAL POSITIONS
-2 YTBI POSITIONS
54 ADJUSTED TOTAL

**ORGANIZATIONAL CHART
PUBLIC WORKS / ENGINEERING
WATER**



NOTE: Other personnel working in support of the Water Utility (A&F, Treasurer, PW, IT) are also funded by the Water Utility, but are not included on this chart. Further, some of the positions reflected above on this chart also perform work funded by other Utility Budgets (Sanitary, Storm, etc.).

**ORGANIZATIONAL CHART
PUBLIC WORKS/ENGINEERING
ENGINEERING**

