

City of West Allis



Organizational Chart

2016

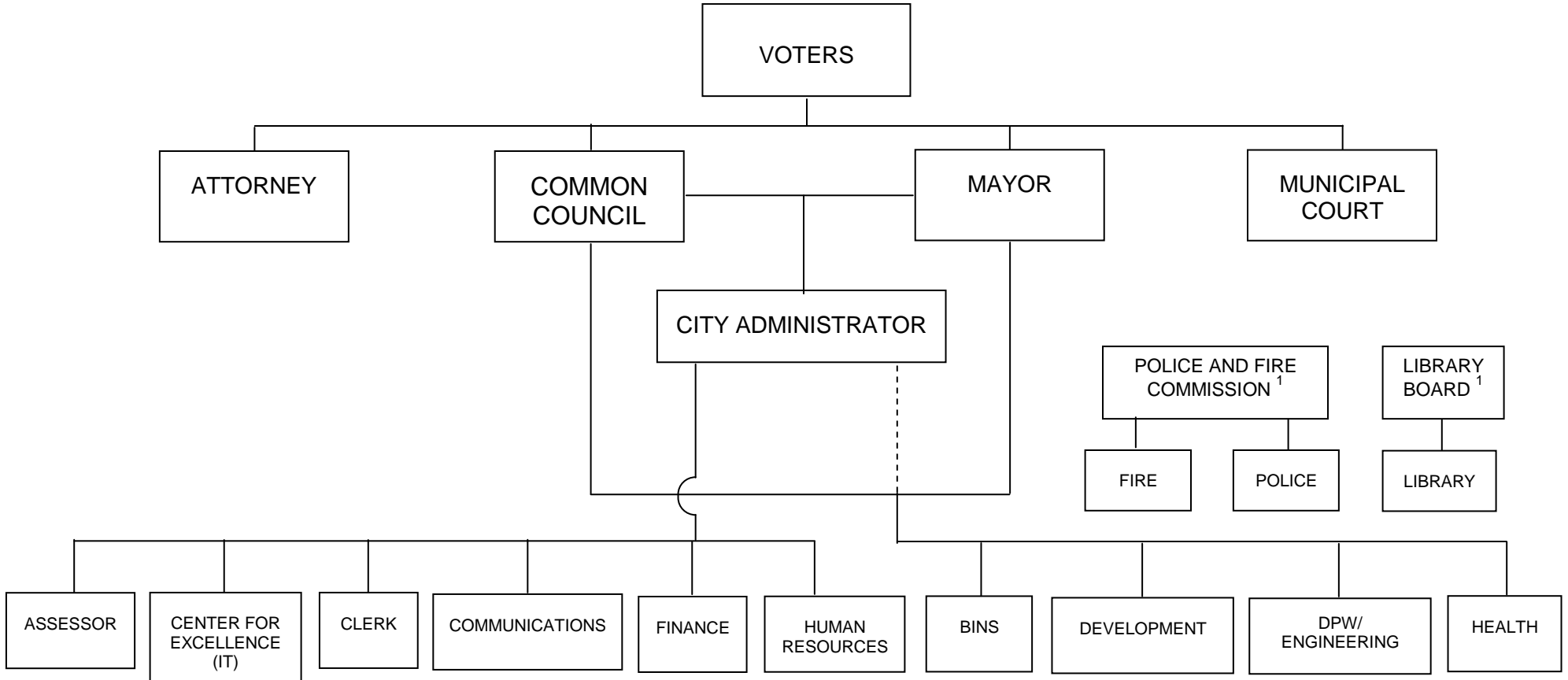
ORGANIZATIONAL CHARTS

January 1, 2016

	<u>Page</u>
City of West Allis.....	1
Council Policy Committees.....	2
Advisory Committees.....	3
Mayor	4
Assessor.....	5
Attorney	6
Building Inspections & Neighborhood Services	7
City Administrator	8
Clerk.....	9
Communications.....	10
Development	11
Community Development	12
Planning & Zoning	13
Finance.....	14
Fire	15
Health.....	16
Health Administrative Services	17
Community Health Services	18
Environmental Health & Consumer Protection	19
Interdisciplinary Health Services.....	20
Senior Center	21
WIC Program	22
Human Resources.....	23
IT / Center for Excellence	24
Library	25

	<u>Page</u>
Municipal Court.....	26
Police.....	27
Public Works / Engineering.....	28
Administrative Office.....	29
Building / Inventory & Electrical Services.....	30
Fleet Services.....	31
Forestry & Grounds	32
Sanitation & Streets.....	33
Water.....	34
Engineering	35

**ORGANIZATIONAL CHART
CITY OF WEST ALLIS**

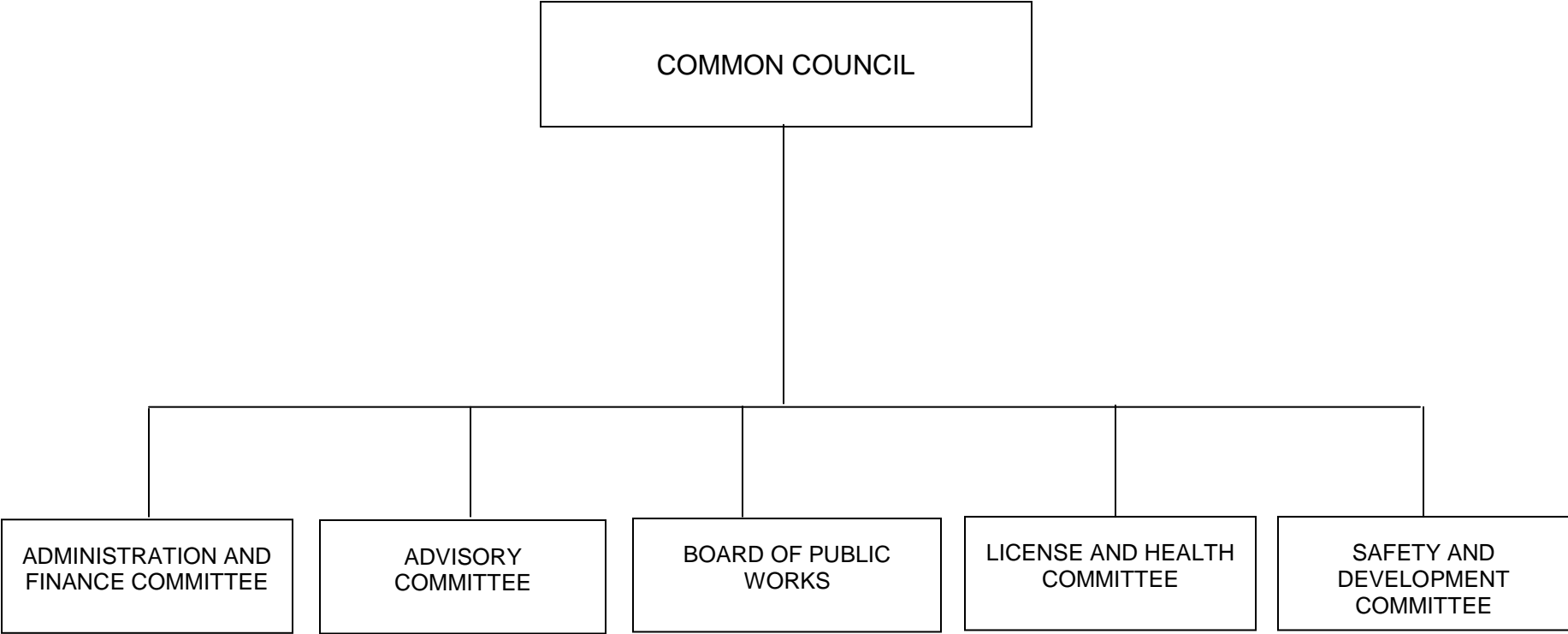


¹ Appointed by the Mayor and confirmed by the Common Council, with policy responsibility.

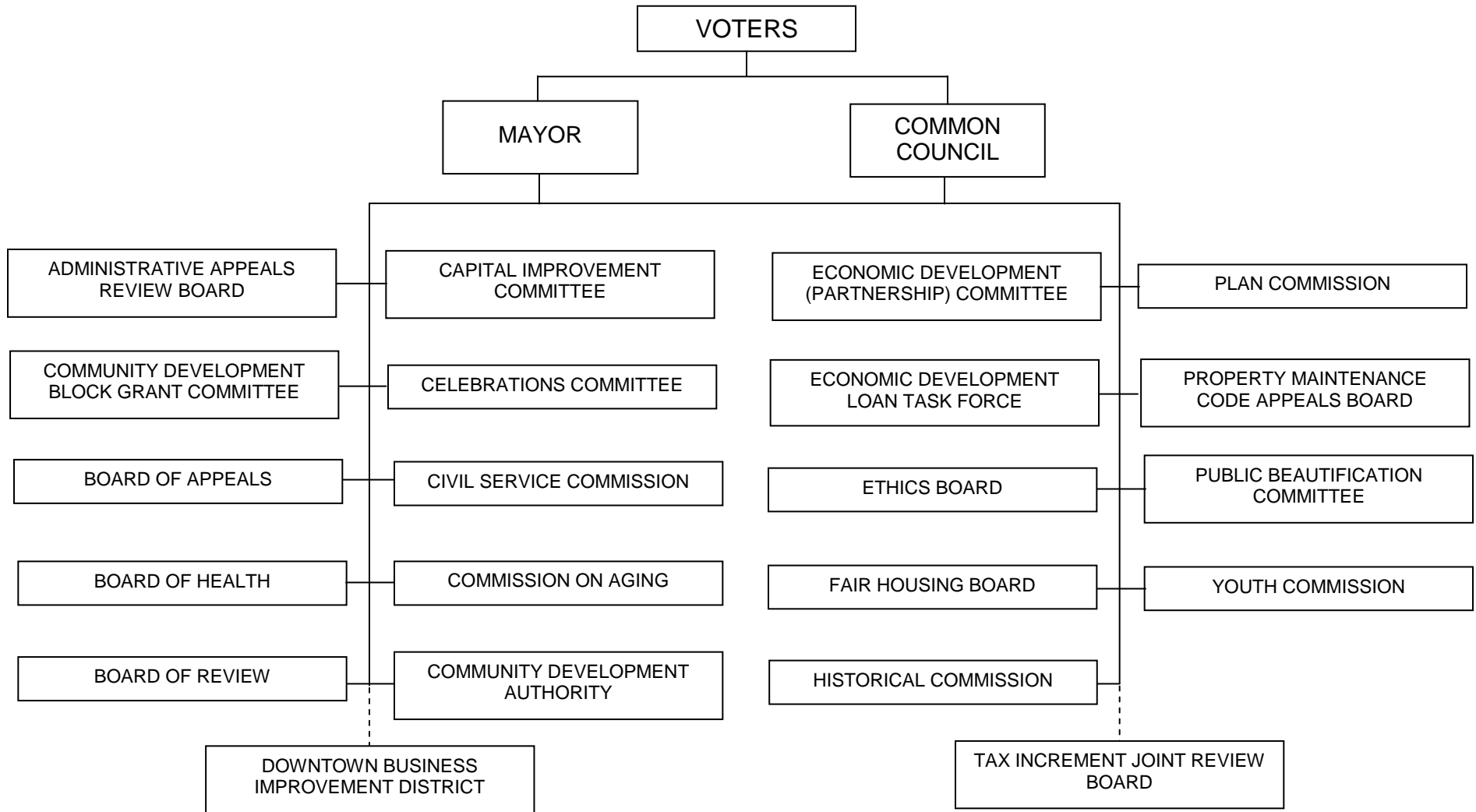
NOTE: Solid lines indicate lines of policy and program authority; dashed lines indicate lines of administrative and financial authority.

City FTE as of May 1, 2016: 515.28

**ORGANIZATIONAL CHART
COUNCIL POLICY COMMITTEES**

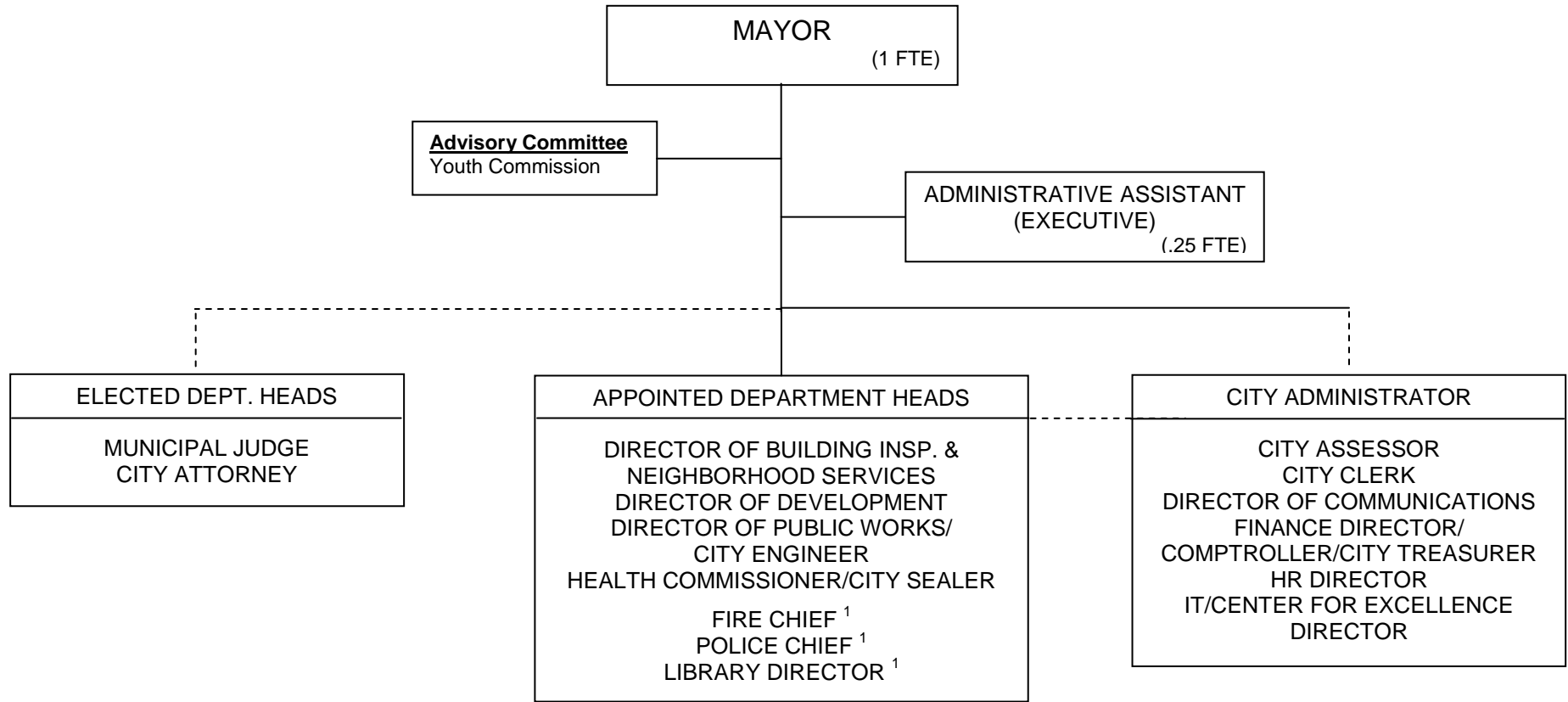


ORGANIZATIONAL CHART ADVISORY COMMITTEES



Advisory Committee members are appointed by the Mayor and confirmed by the Common Council.

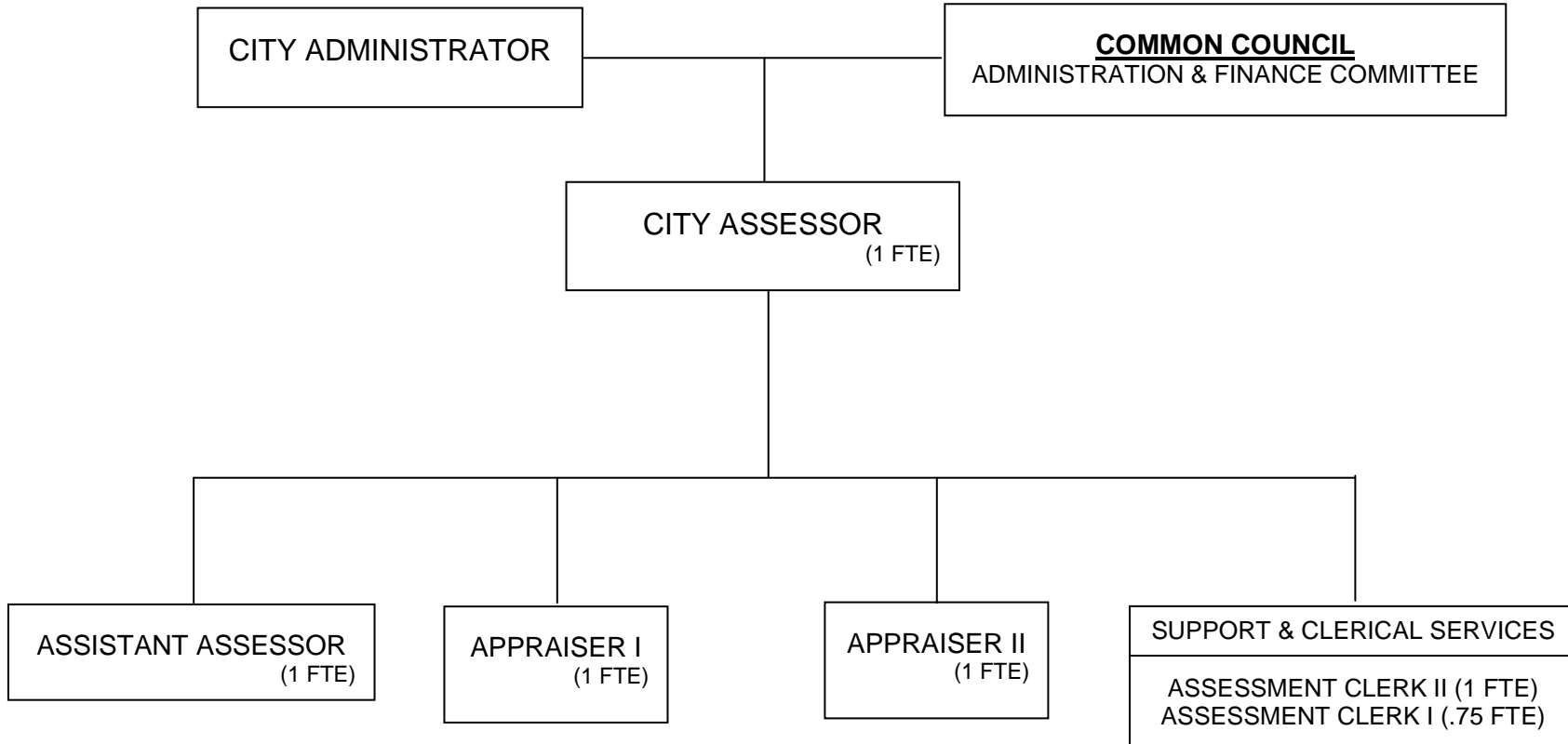
**ORGANIZATIONAL CHART
MAYOR**



¹ Reports directly to Police & Fire Commission and Library Board respectively.

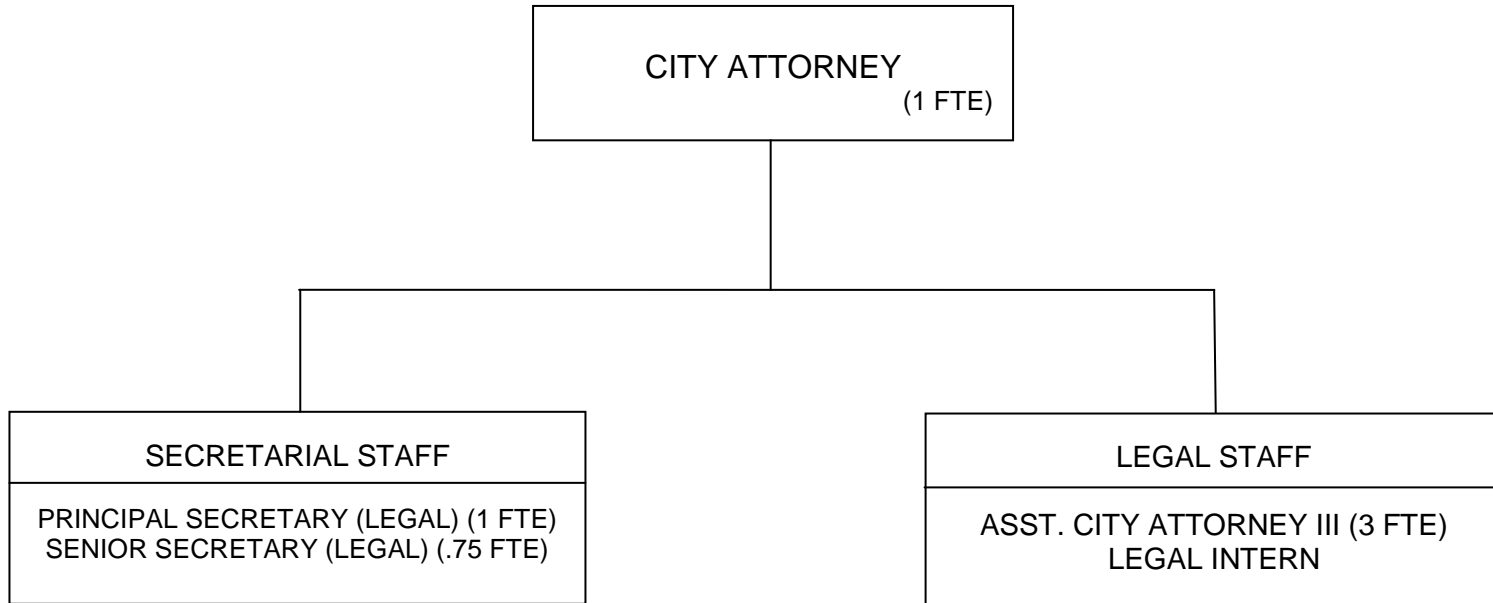
CITY FUNDED FTEs: 1.25

**ORGANIZATIONAL CHART
ASSESSOR**



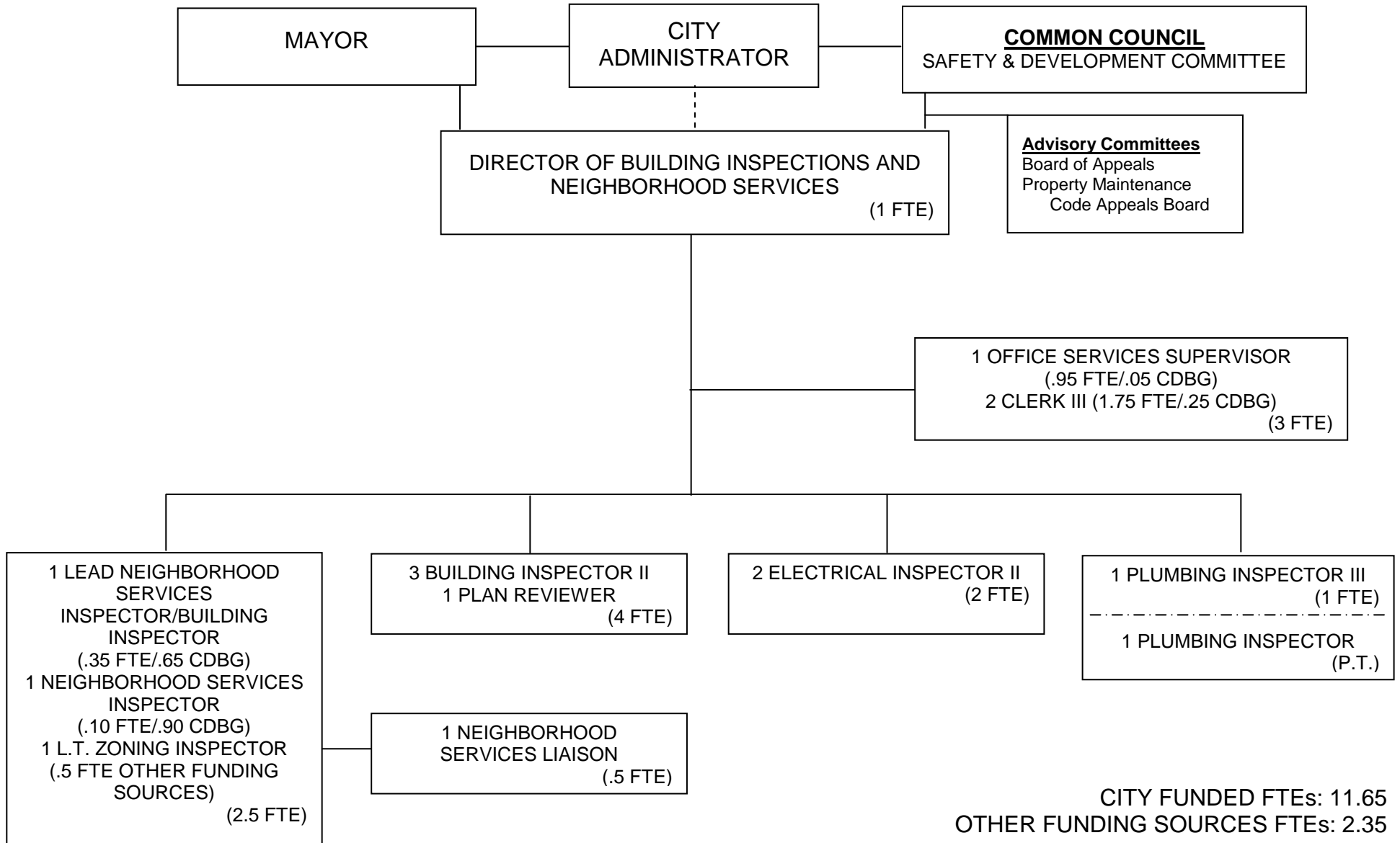
CITY FUNDED FTEs: 5.75

**ORGANIZATIONAL CHART
ATTORNEY**

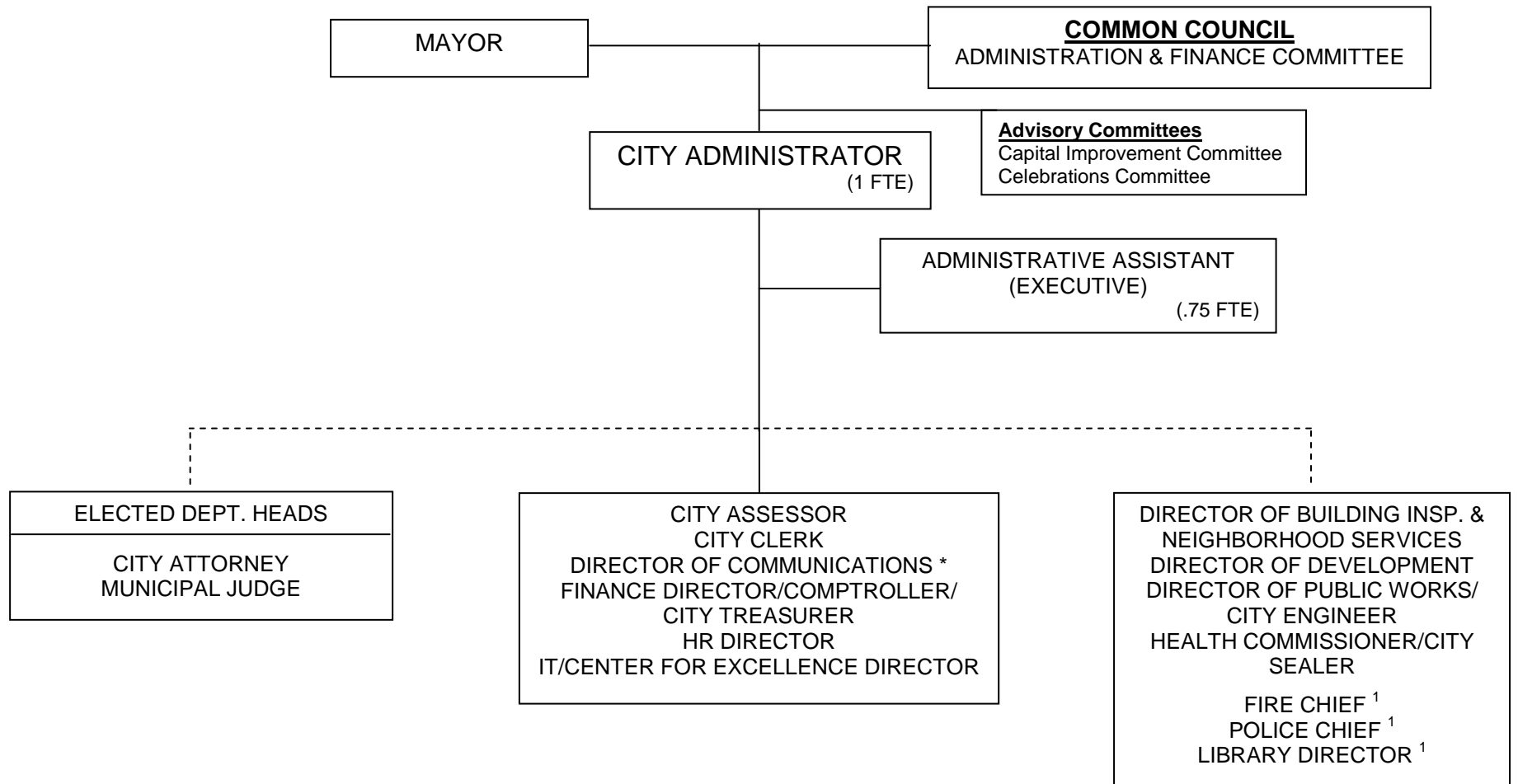


CITY FUNDED FTEs: 5.75

**ORGANIZATIONAL CHART
BUILDING INSPECTIONS AND NEIGHBORHOOD SERVICES**



**ORGANIZATIONAL CHART
CITY ADMINISTRATOR**



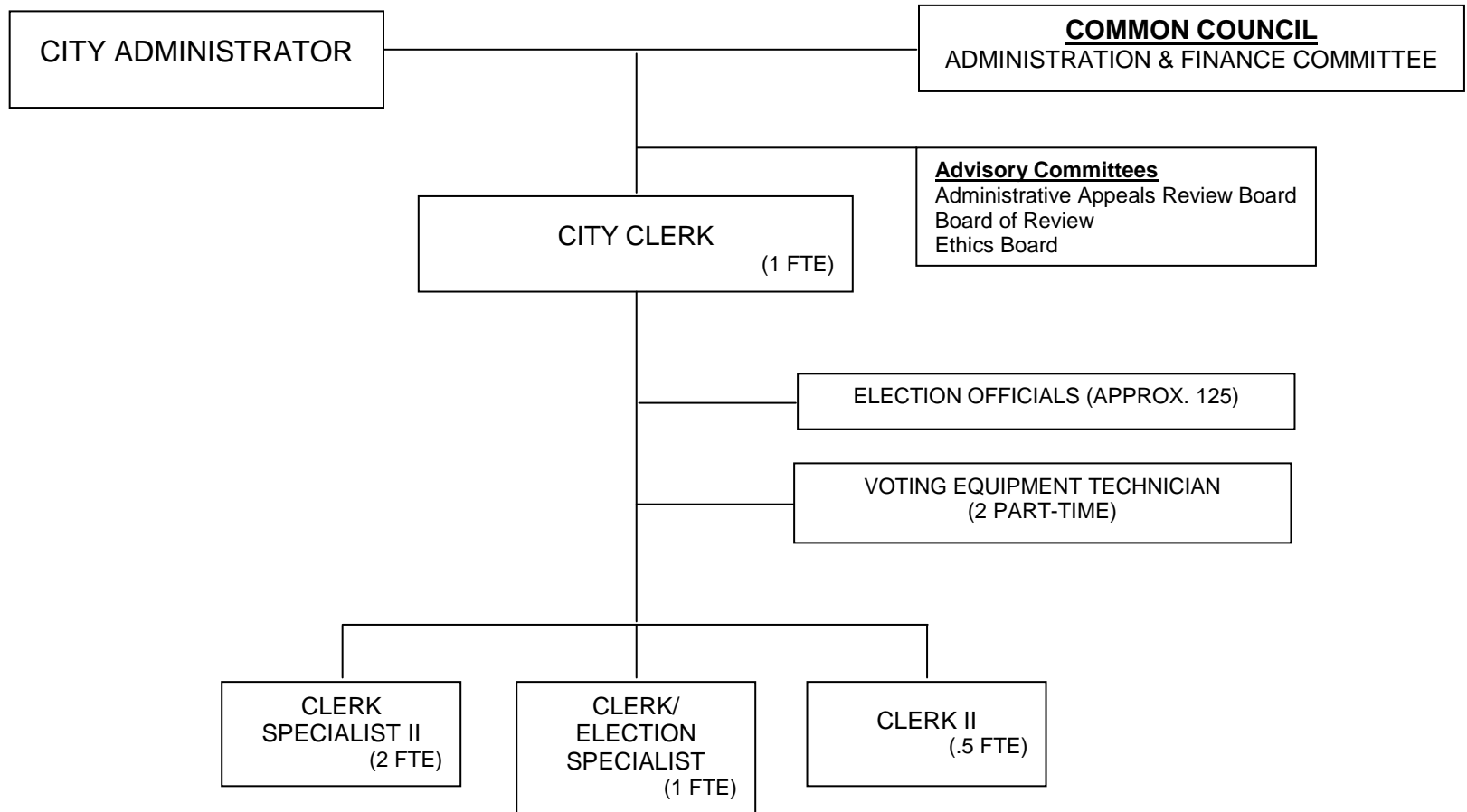
Note: Solid lines indicate lines of policy and program authority; dashed lines indicate lines of administrative and financial authority.

¹ Reports directly to Police & Fire Commission and Library Board respectively.

* 2016 Budget Change – currently in progress

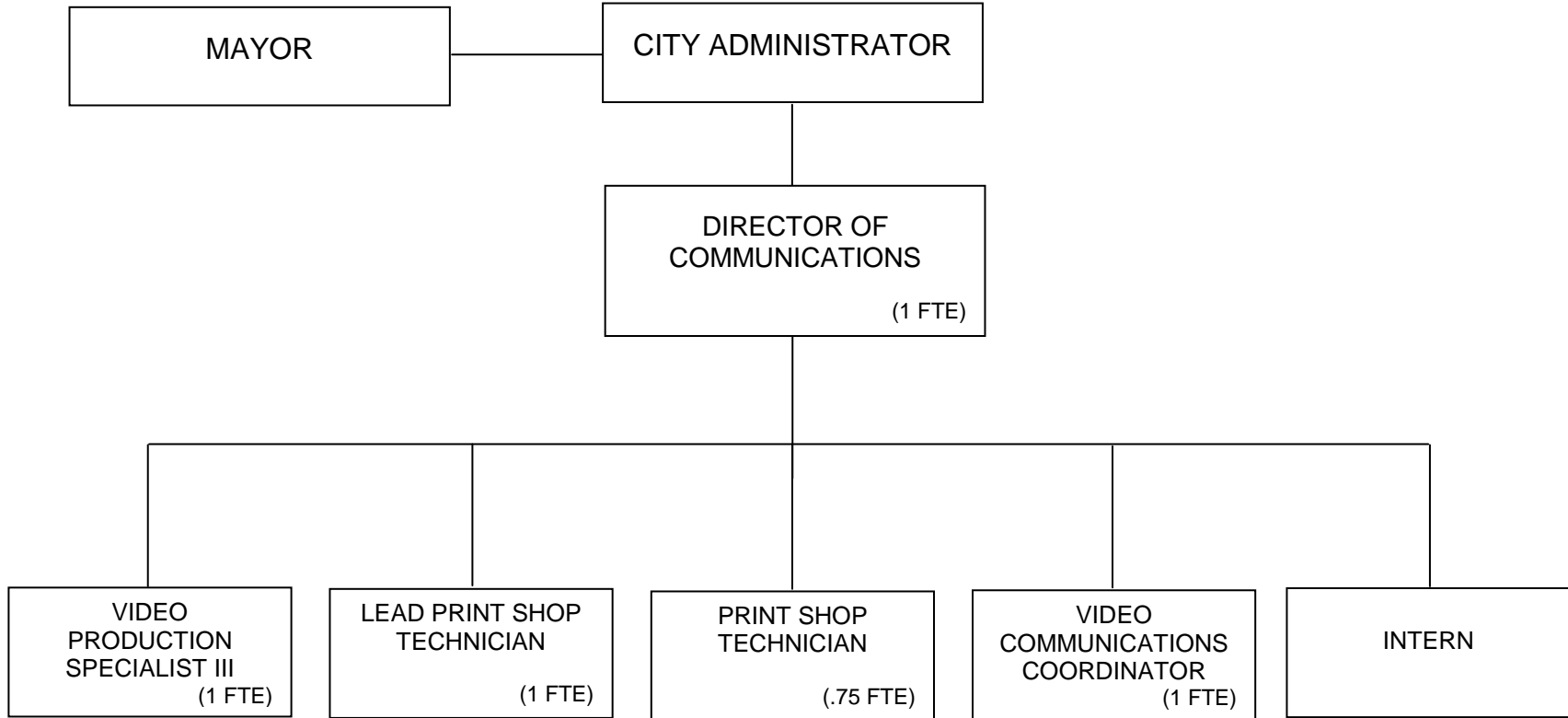
CITY FUNDED FTEs: 1.75

**ORGANIZATIONAL CHART
CLERK**



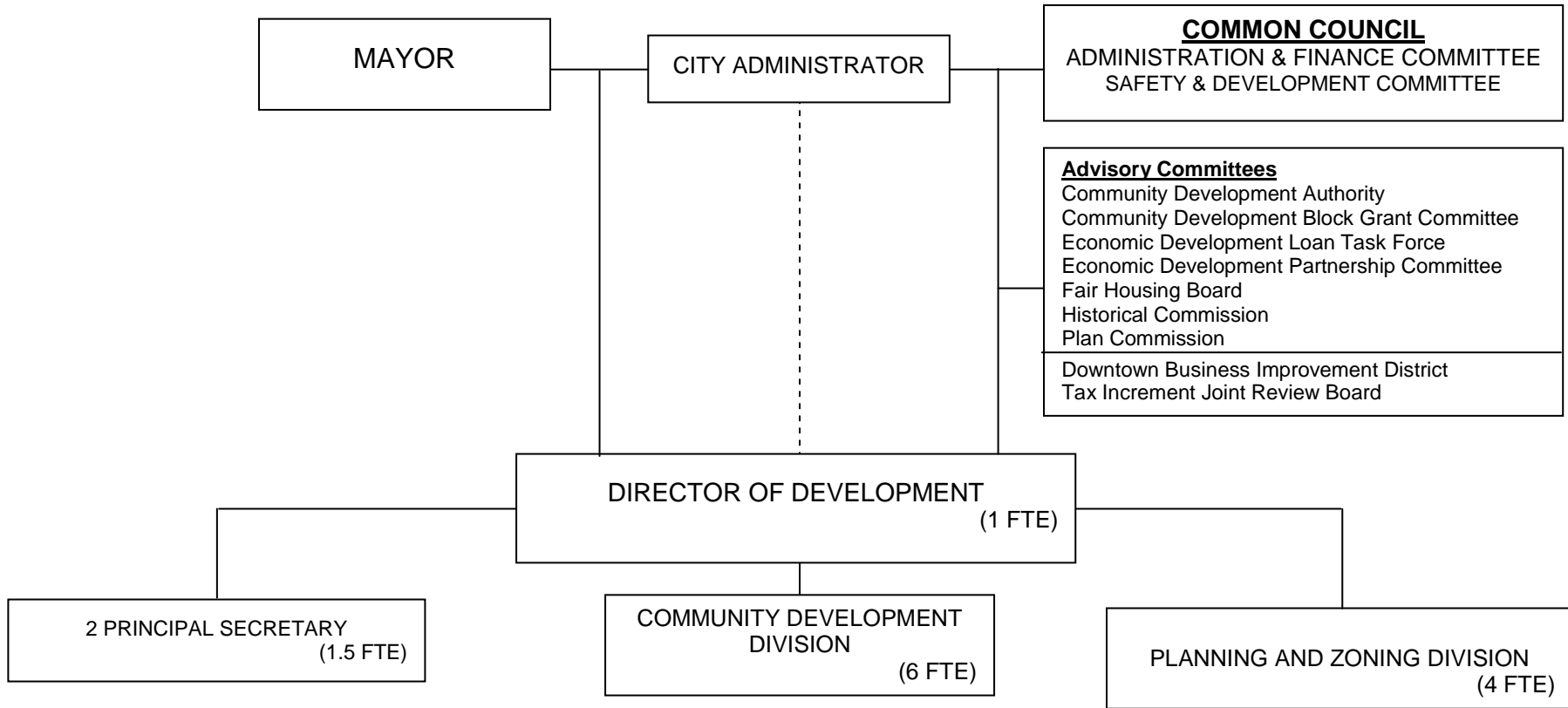
CITY FUNDED FTEs: 4.5

**ORGANIZATIONAL CHART
COMMUNICATIONS**



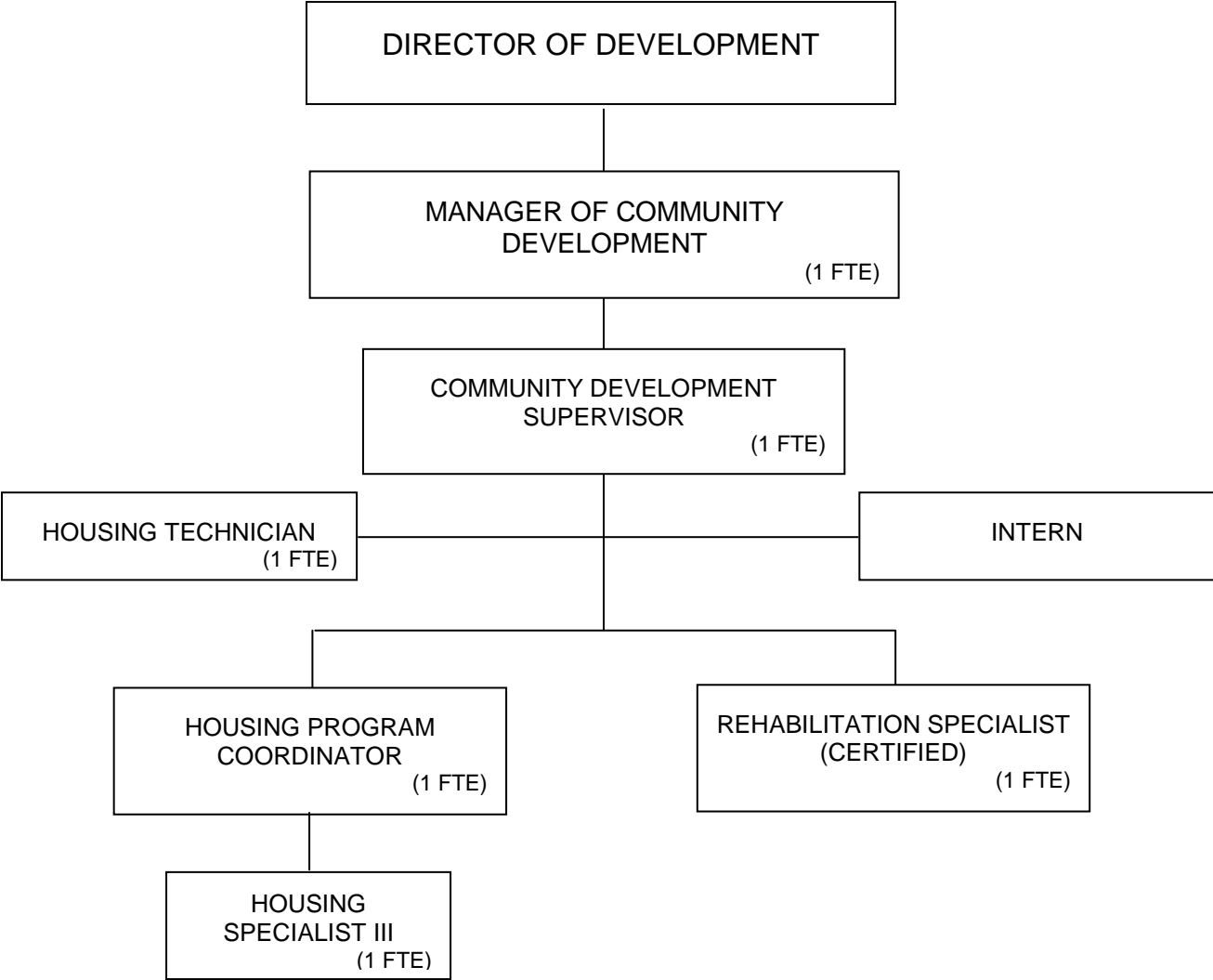
CITY FUNDED FTEs: 1.75
OTHER FUNDING SOURCES FTEs: 3.00

ORGANIZATIONAL CHART DEVELOPMENT



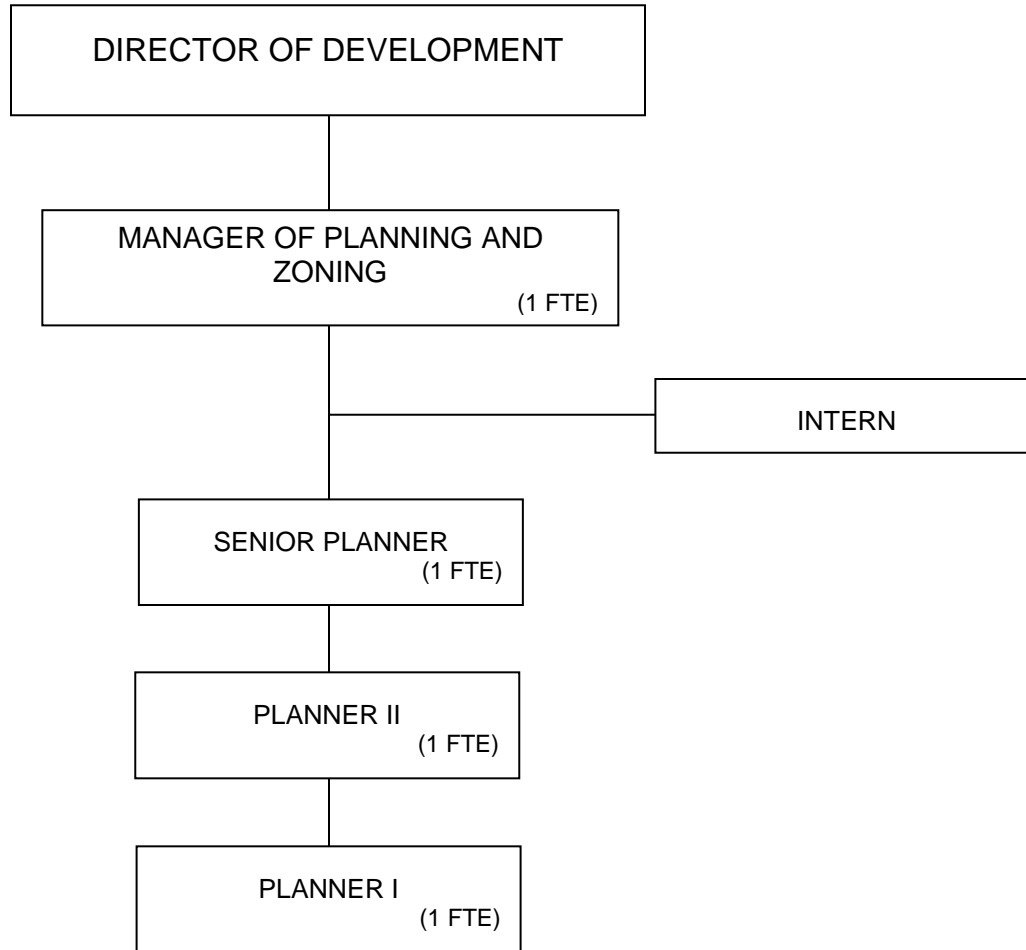
CITY FUNDED FTEs: 3.03
OTHER FUNDING SOURCES FTEs: 9.47

**ORGANIZATIONAL CHART
COMMUNITY DEVELOPMENT**

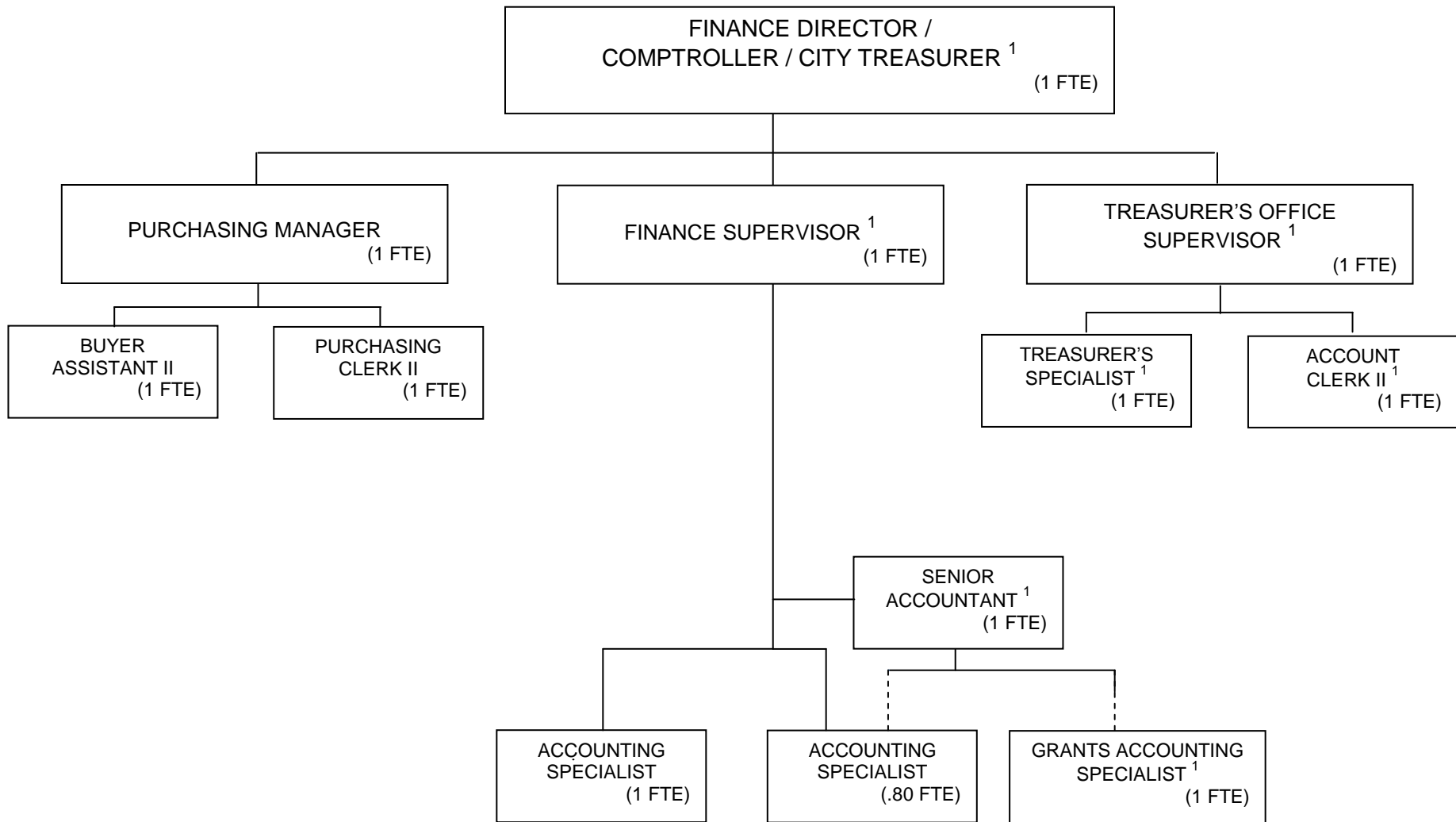


NOTE: Other personnel working in support of the Community Development Division are not included in this chart, however are funded by the Community Development Division (e.g., Grants Accounting Specialist, Finance Department).

**ORGANIZATIONAL CHART
PLANNING AND ZONING**



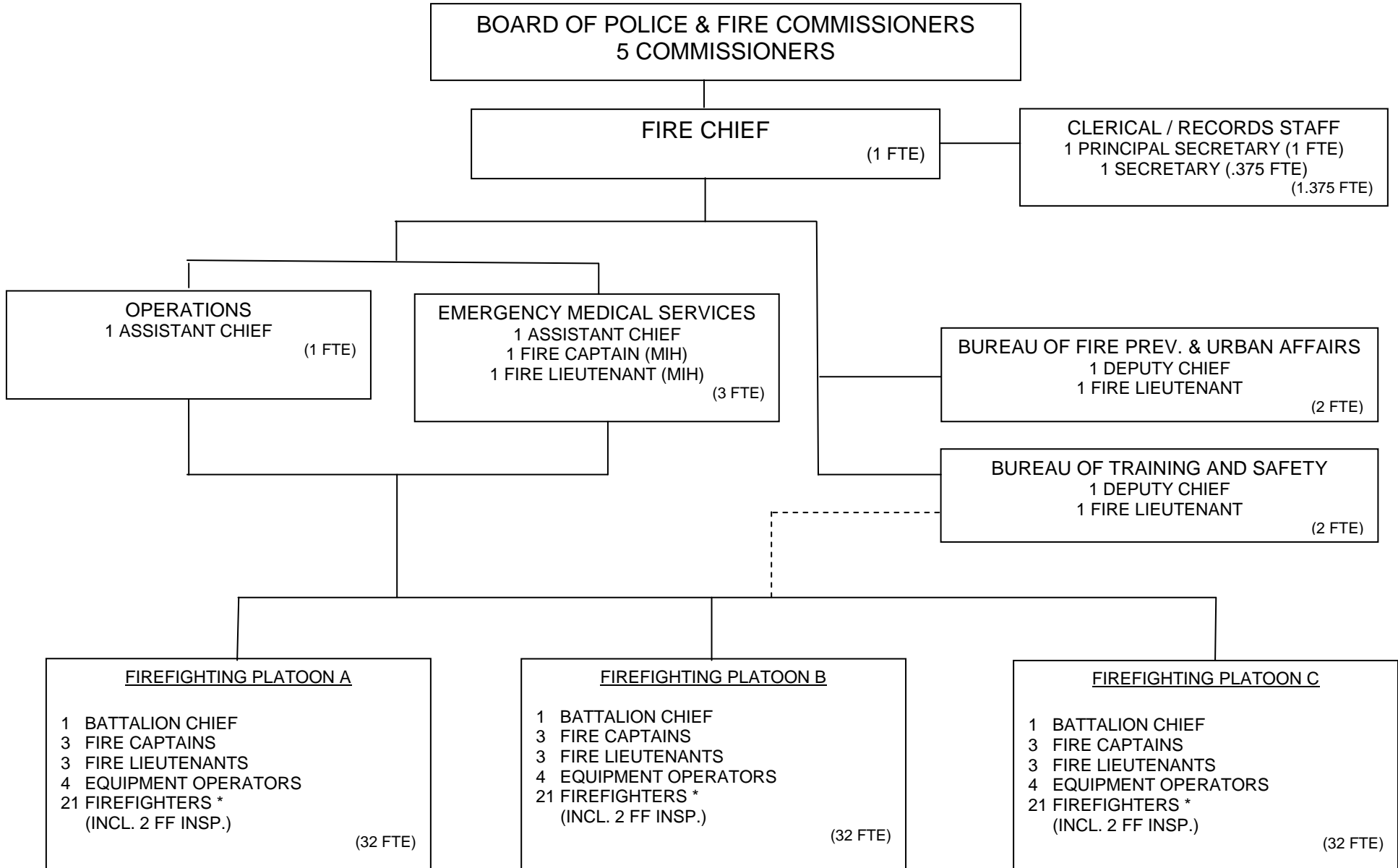
ORGANIZATIONAL CHART FINANCE DEPARTMENT



¹ Positions supported by various funding sources (e.g., the Grants Accounting Specialist is funded by the Community Development Block Grant)

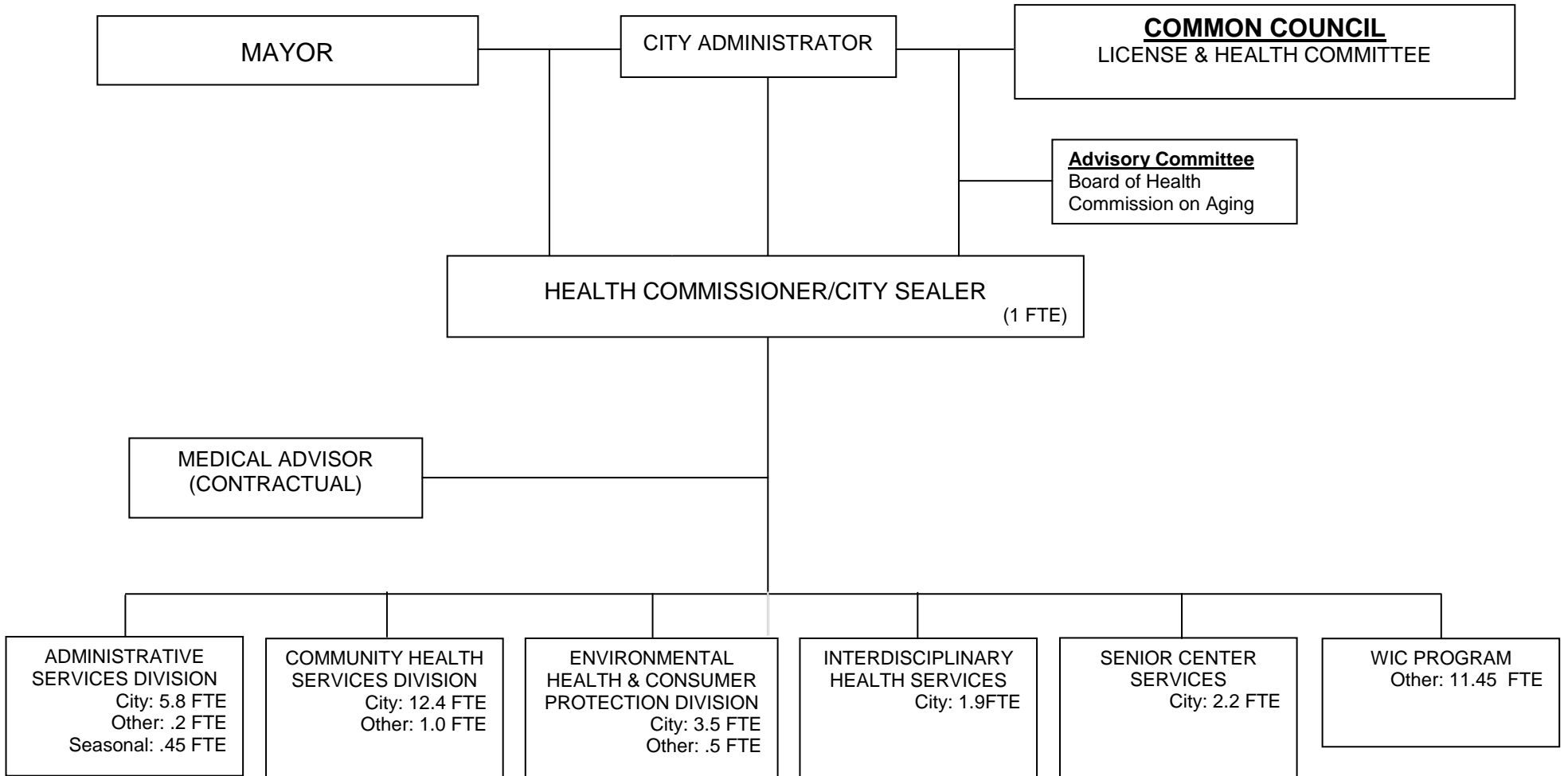
CITY FUNDED FTEs: 8.75
OTHER FUNDING SOURCES FTEs: 3.05

**ORGANIZATIONAL CHART
FIRE**



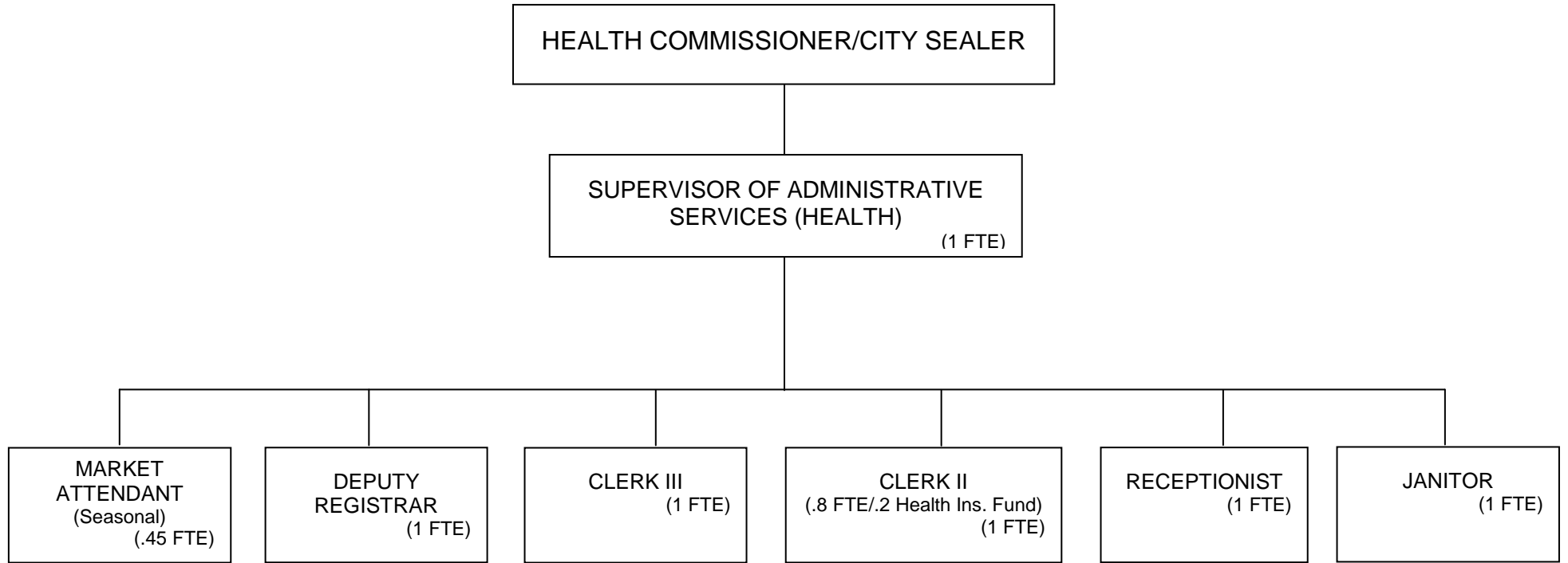
CITY FUNDED FTEs: 106
OTHER FUNDING SOURCES FTEs: .375

ORGANIZATIONAL CHART HEALTH

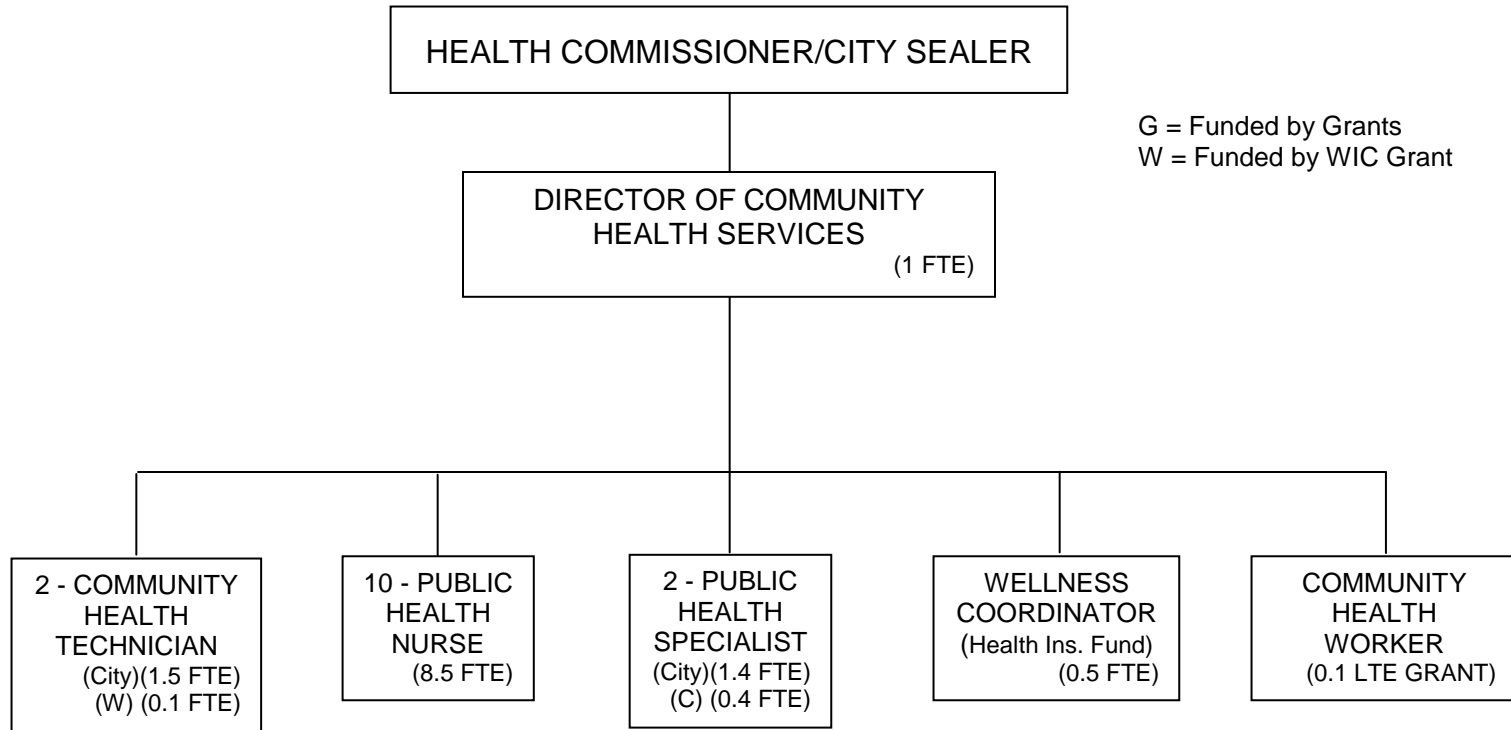


CITY FUNDED FTEs: 26.8
 OTHER FUNDING SOURCES FTEs: 13.15
 SEASONAL POSITION: .45

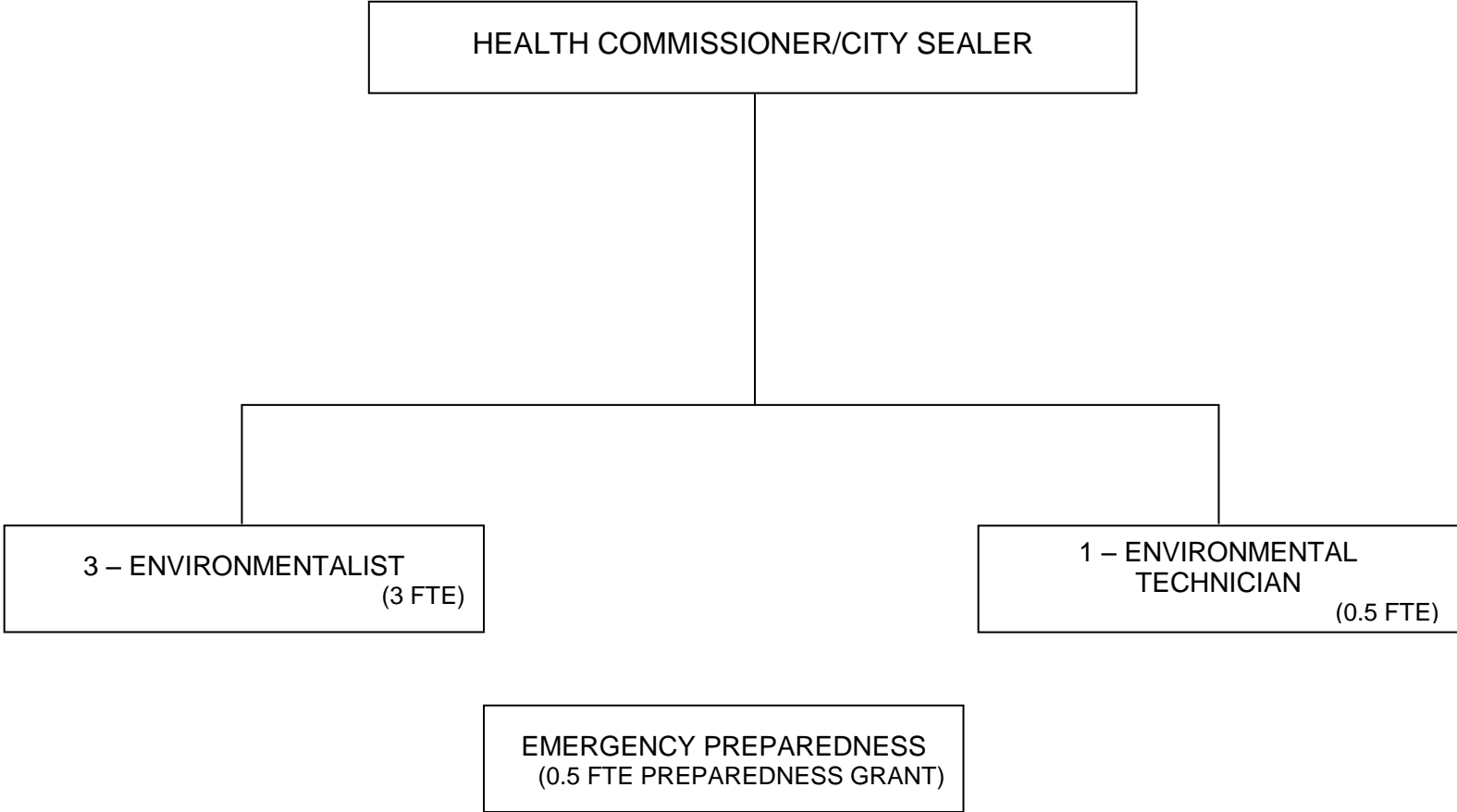
**ORGANIZATIONAL CHART
HEALTH
HEALTH ADMINISTRATIVE SERVICES**



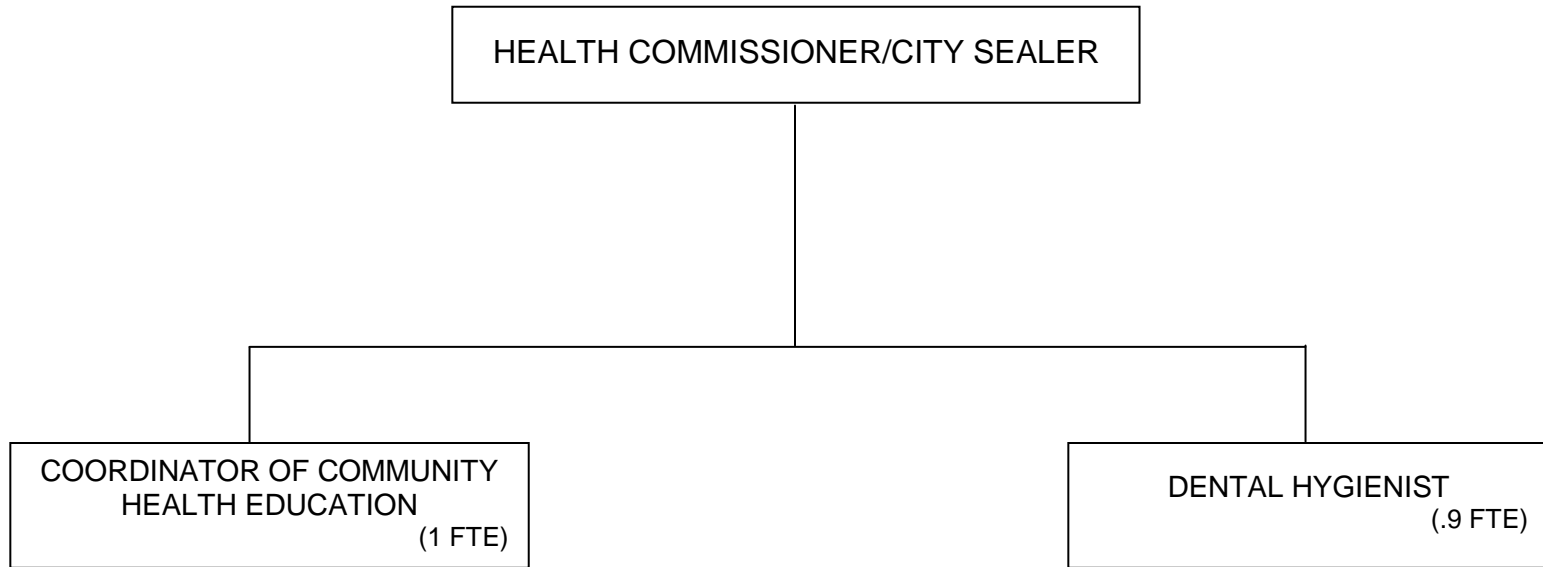
**ORGANIZATIONAL CHART
HEALTH
COMMUNITY HEALTH SERVICES**



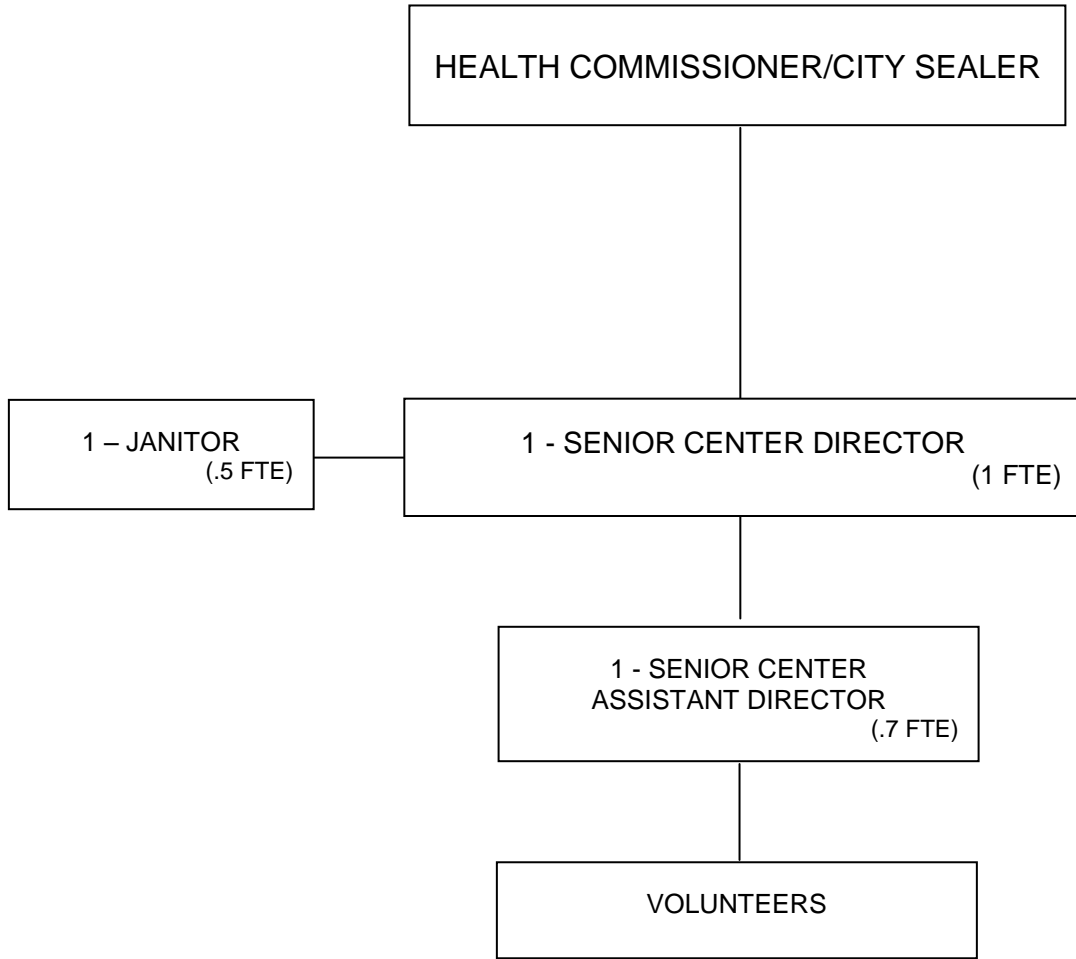
**ORGANIZATIONAL CHART
HEALTH
ENVIRONMENTAL HEALTH & CONSUMER PROTECTION**



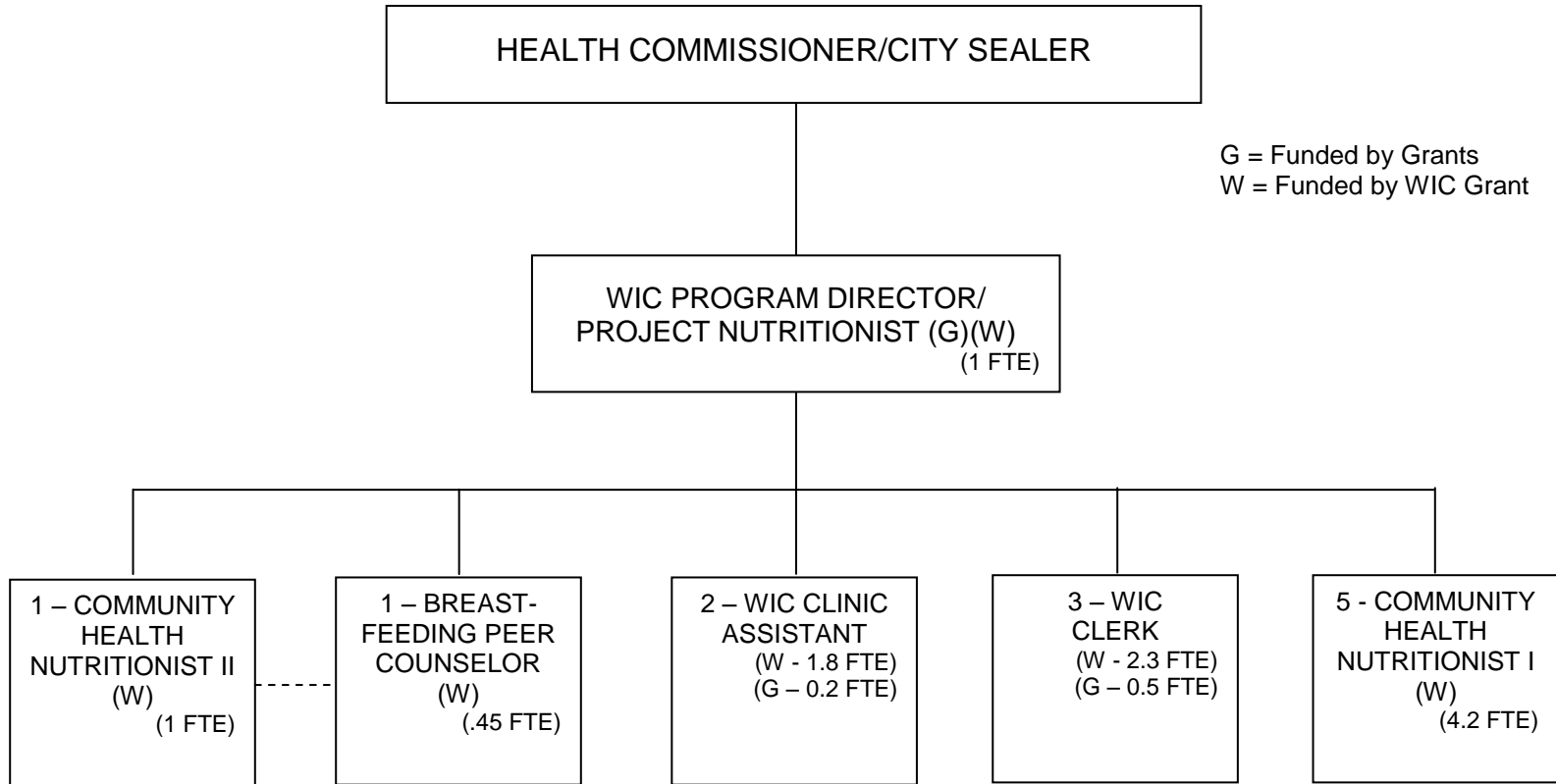
**ORGANIZATIONAL CHART
HEALTH
INTERDISCIPLINARY HEALTH SERVICES**



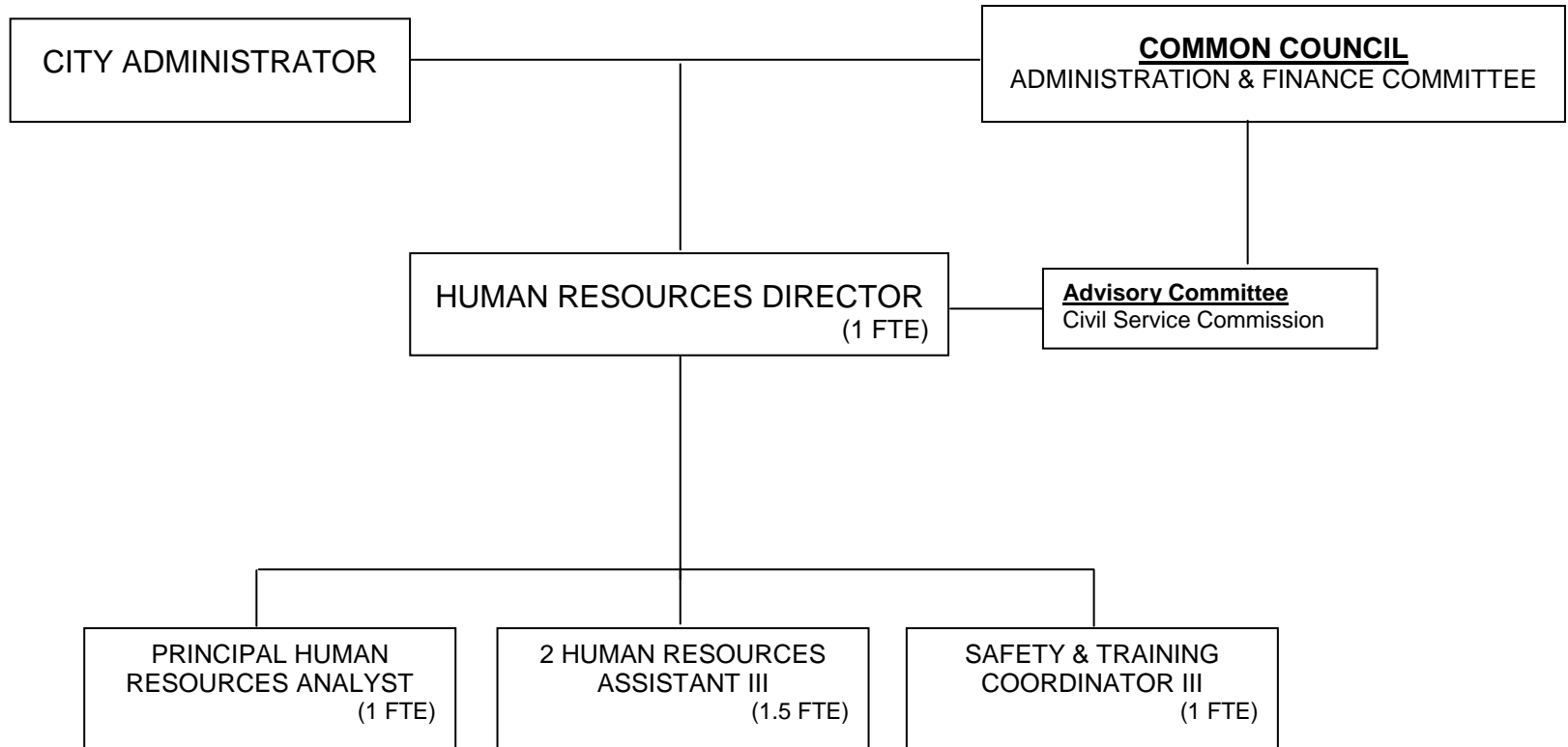
**ORGANIZATIONAL CHART
HEALTH
SENIOR CENTER**



**ORGANIZATIONAL CHART
HEALTH
WIC PROGRAM**

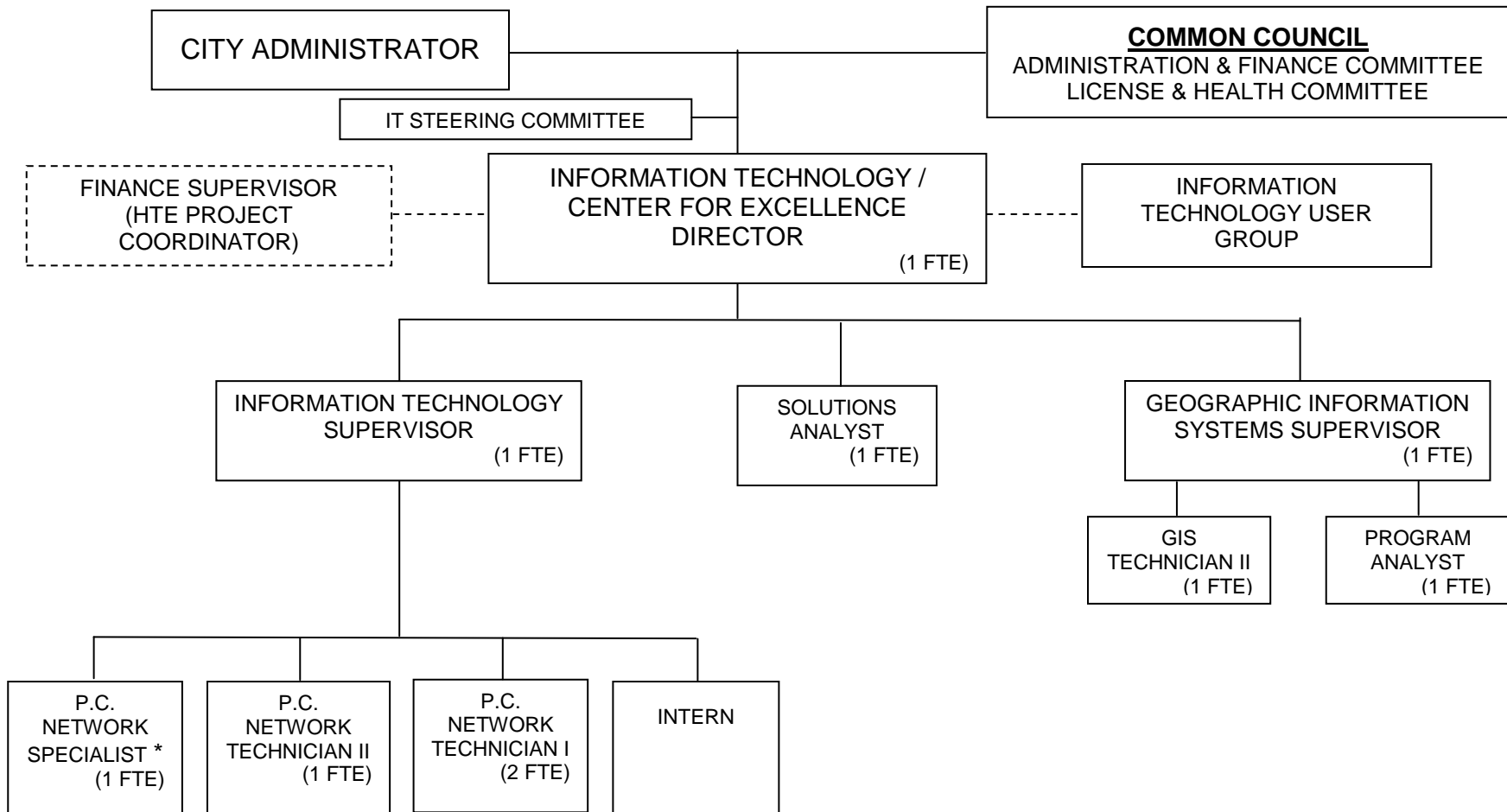


**ORGANIZATIONAL CHART
HUMAN RESOURCES**



CITY FUNDED FTEs: 4.5

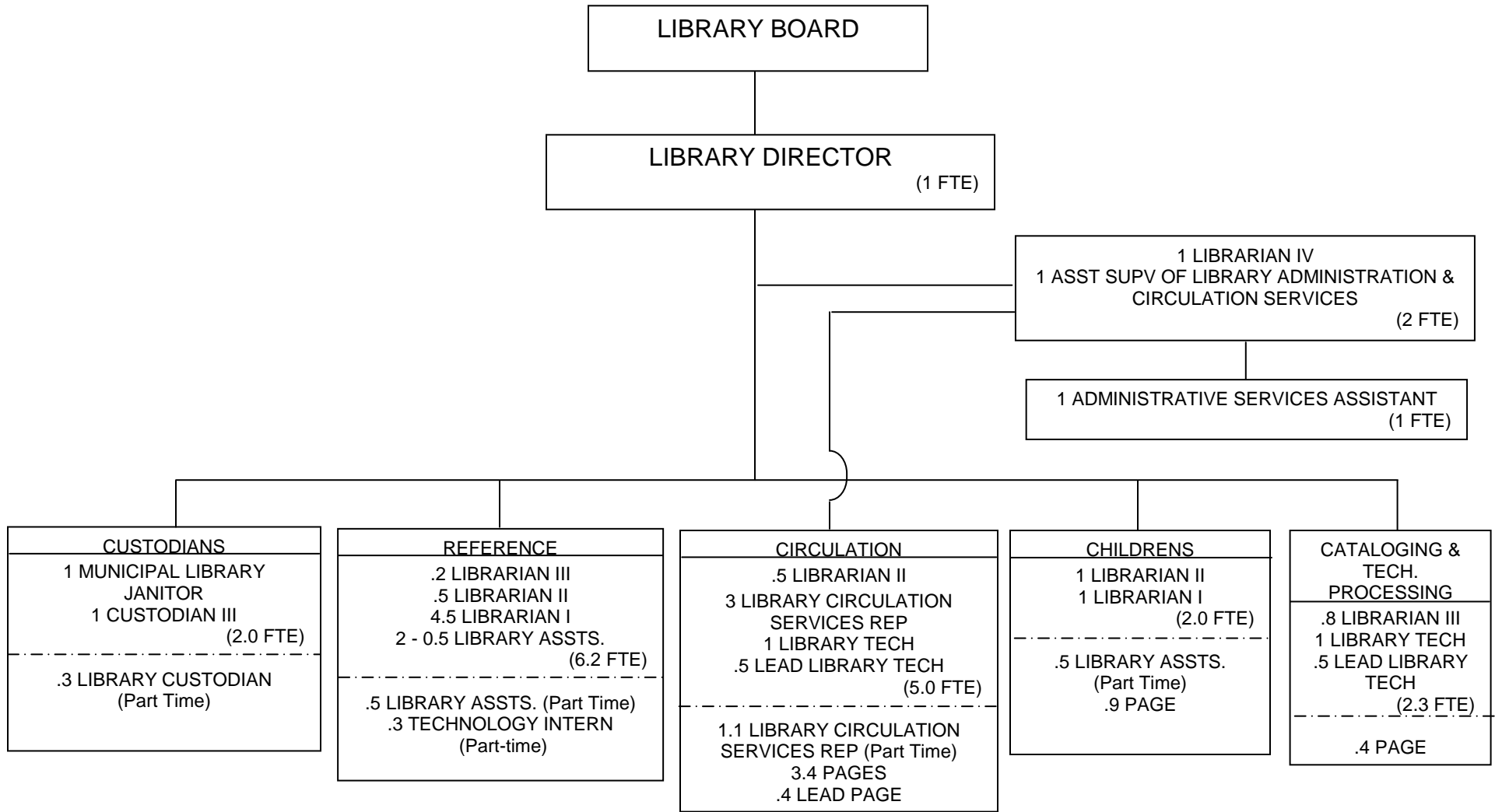
**ORGANIZATIONAL CHART
INFORMATION TECHNOLOGY / CENTER FOR EXCELLENCE**



* 1 P.C. Network Specialist to support Police Department

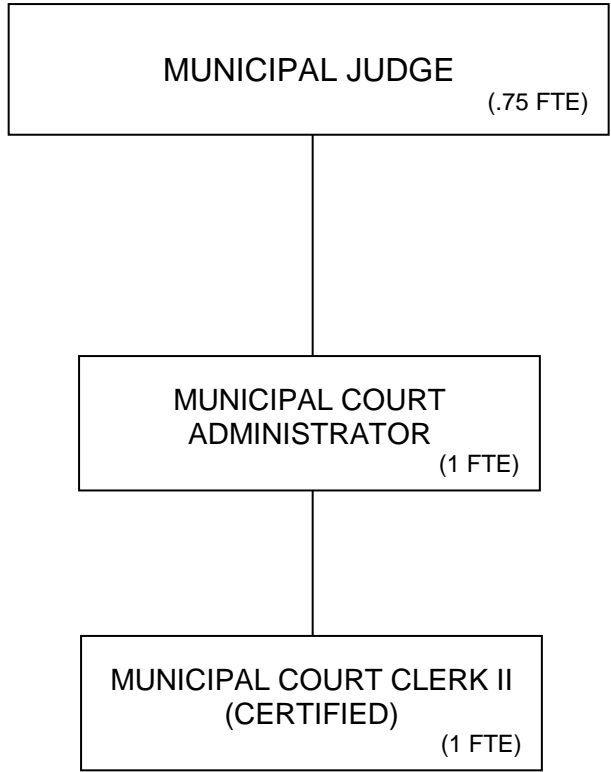
CITY FUNDED FTEs: 10.0

**ORGANIZATIONAL CHART
LIBRARY**



CITY FUNDED FTEs: 21.5
 NON-BENEFITED (PART-TIME) FTEs: 7.8
 TOTAL FTEs: 29.3

**ORGANIZATIONAL CHART
MUNICIPAL COURT**



CITY FUNDED FTEs: 2.75

ORGANIZATIONAL CHART POLICE

Police and Fire Commission
5 Commissioners

Chief of Police
(1 FTE)

Operations Division
1 Deputy Chief (1 FTE)

1 Principal Secretary
(1 FTE)

Support Services Division
1 Deputy Chief (1 FTE)

Patrol Bureau
1 Captain (1 FTE)

Criminal Investigations Bureau
1 Captain (1 FTE)

Management and Planning Bureau
1 Captain (1 FTE)

Administrative Services Bureau
1 Captain (1 FTE)

Training Bureau
1 Captain

1st Shift
1 Lieutenant
3 Sergeants
21 Patrol Officers
(25 FTE)

Criminal Investigations Unit
10 Detectives
(10 FTE)

Accreditation Unit
1 Specialist II
(1 FTE)

Community Svcs. Unit (6.8 FTE)
1 Lieutenant
3 School Resource Officer
1 Community Service Officer
1 Clerk III
2 Part-time Neighborhood Spec.
1 DV Advocate (.8 FTE)

1 Specialist III
1 Fleet Mechanic
1 Lead Custodian
1 Part-time Cleaner
(4 FTE)

Traffic Unit
2 Traffic Investigators
(2 FTE)

Sensitive Crimes Unit
1 Lieutenant
5 Detectives
(6 FTE)

Court Services Unit
1 Court Liaison Sergeant
2 Warrant Officers
(3 FTE)

Communications Unit (16 FTE)
1 Lieutenant
6 Desk Sergeants
1 Dispatch Trainer
8 Dispatchers
5 Part-time Dispatchers

2nd Shift
1 Lieutenant
3 Sergeants
24 Patrol Officers
(28 FTE)

Special Investigations Unit
1 Lieutenant
1 Detective Sergeant
5 Detectives
1 Corporal
1 K9 Officer
(9 FTE)

Forensics and Technical Services Unit (5 FTE)
2 Specialist III
1 Property Room Technician
1 RMS Specialist
1 Crime Analyst

3rd Shift
1 Lieutenant
3 Sergeants
21 Patrol Officers
(25 FTE)

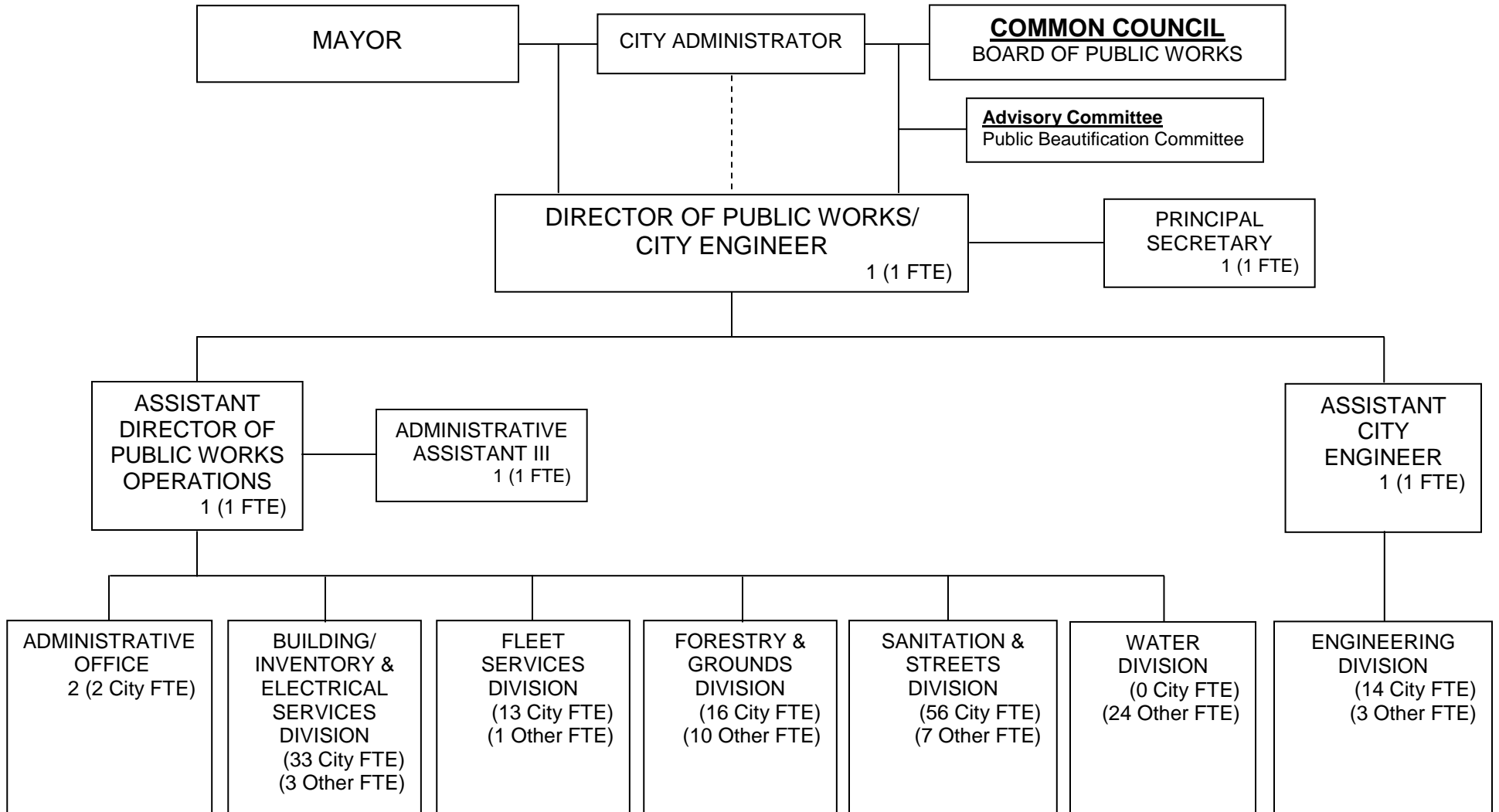
3 Parking Control Operators
(Report to Patrol Supervisors on 1st and 3rd shift)
(3 FTE)

Org Chart does not contain part time and temporary positions (such as Community Aides and Clerks).

Records Unit (8.75 FTE)
1 Records Supervisor
1 Clerk III
6 Clerk II
1 Clerk II (.75 FTE)
3 Part-time Night Parker Takers

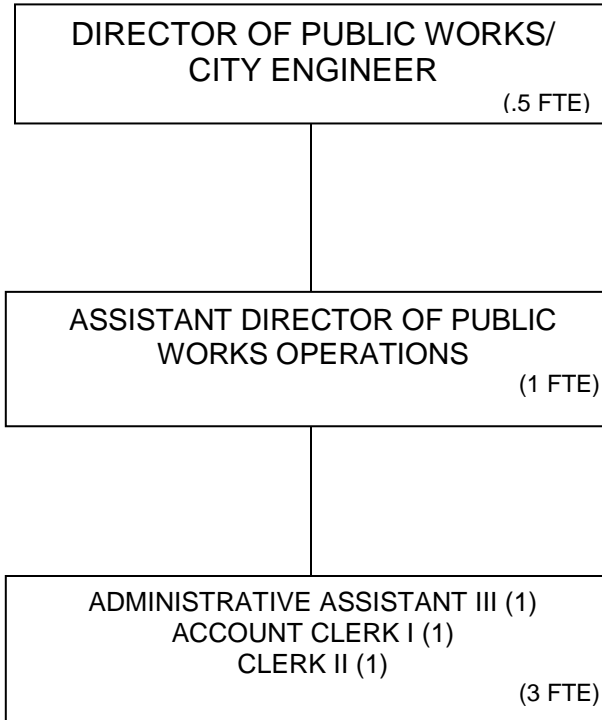
132	Sworn Employees
28.55	Civilians
160.55	Total Employees

**ORGANIZATIONAL CHART
PUBLIC WORKS / ENGINEERING**



CITY FUNDED FTEs: 139
OTHER FUNDING SOURCES FTEs: 48

**ORGANIZATIONAL CHART
PUBLIC WORKS / ENGINEERING
ADMINISTRATIVE OFFICE**



**ORGANIZATIONAL CHART
PUBLIC WORKS / ENGINEERING
BUILDING / INVENTORY AND ELECTRICAL SERVICES**

DIRECTOR OF PUBLIC WORKS/
CITY ENGINEER

ASSISTANT DIRECTOR OF PUBLIC
WORKS OPERATIONS

BUILDING AND SIGN MAINTENANCE/
INVENTORY SUPERINTENDENT
(1 FTE)

1 - CLERK III
(1 FTE)

ELECTRICAL
SUPERINTENDENT
(1 FTE)

BUILDING & SIGN
LEAD PERSON
(1 FTE)

SIGN SHOP SECTION
PAINTER (1)
(1 FTE)

CARPENTRY SECTION
SENIOR CARPENTER (1)
CARPENTER (1)
(2 FTE)

CUSTODIAL SECTION
CUSTODIAN III (1)
MUNICIPAL YARD JANITOR (1)
LABORER (1)
PARK ATTENDANT (1)
(4 FTE)

INVENTORY SECTION
LEAD INVENTORY SERVICES
SPECIALIST (1)
INVENTORY SERVICES
SPECIALIST (2)
(3 FTE)

SIGN INSTALLATION SECTION
MAINTENANCE REPAIRER (5)
(5 FTE)

PLUMBING & HEATING
SECTION
PLUMBER (1)
HVAC/R TECHNICIAN (1)
(2 FTE)

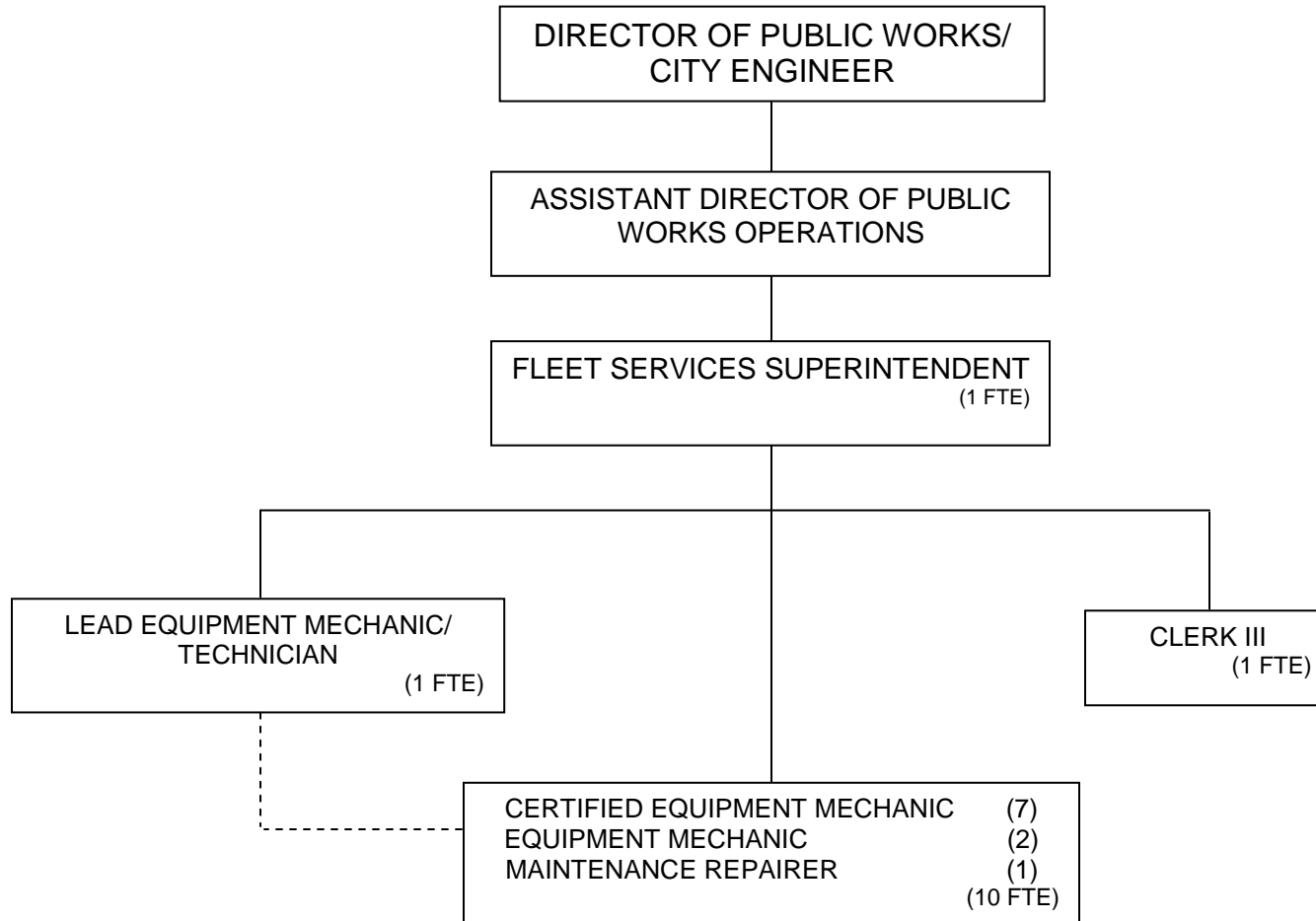
PAINTING SECTION
SENIOR PAINTER (1)
PAINTER I (1)
(2 FTE)

LEAD ELECTRICAL
MECHANIC
(CERTIFIED)
(1 FTE)

GENERAL OPERATION
CERTIFIED ELECTRICAL
MECHANIC II (2)
ELECTRICAL MECHANIC I (7)
(9 FTE)

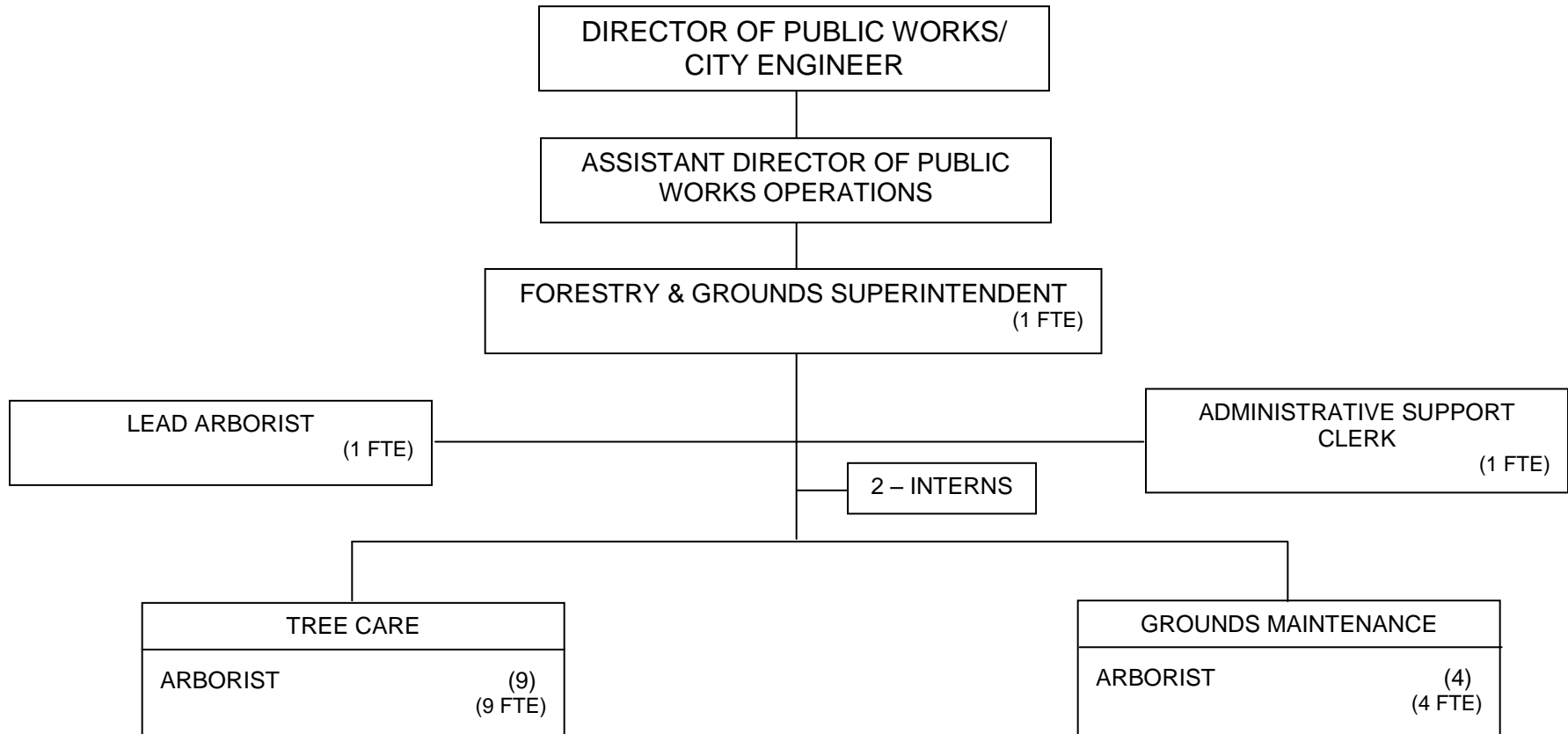
Org Chart does not reflect the three (3) temporary laborer positions.

**ORGANIZATIONAL CHART
PUBLIC WORKS / ENGINEERING
FLEET SERVICES**



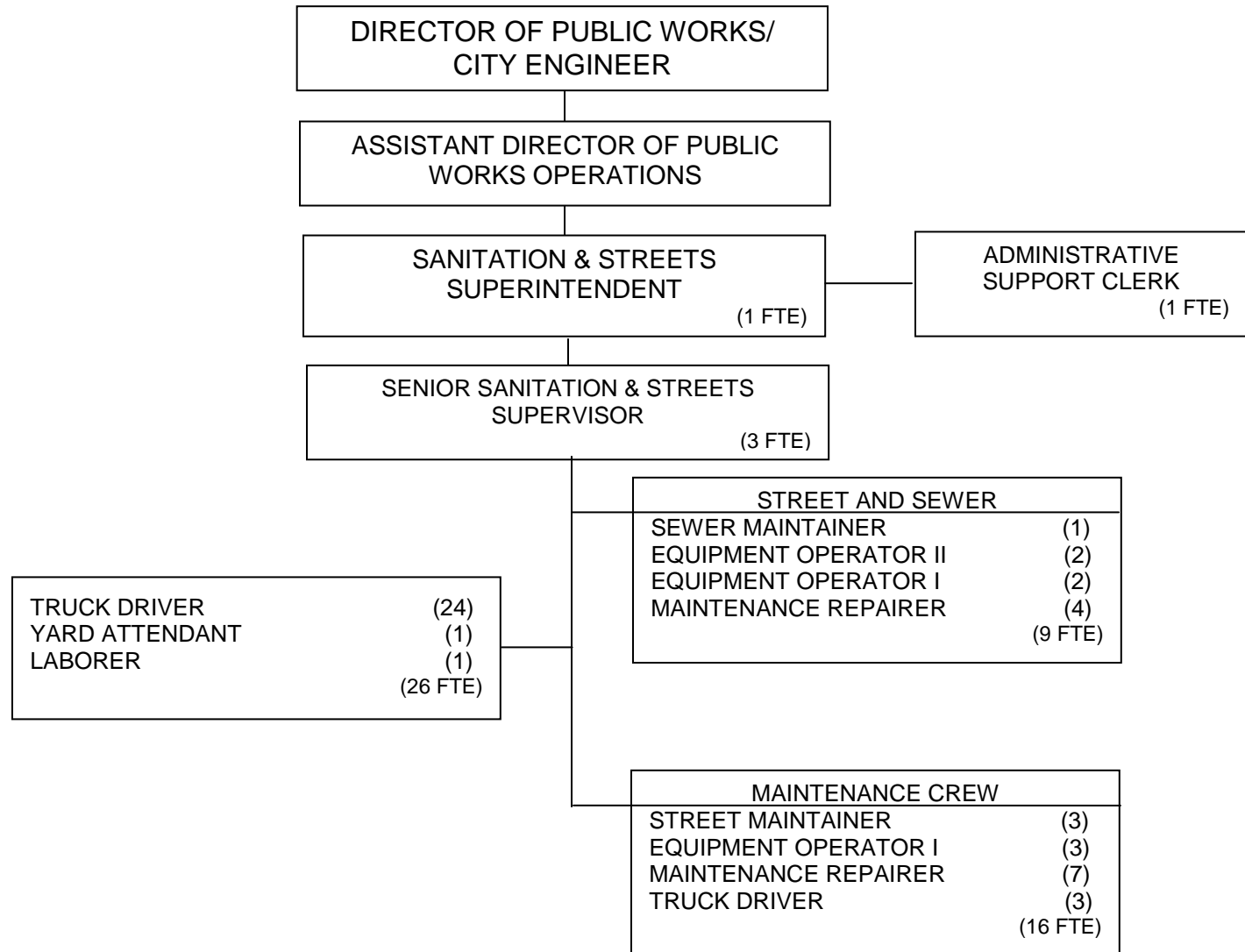
Org Chart does not reflect the one (1) temporary laborer position.

**ORGANIZATIONAL CHART
PUBLIC WORKS / ENGINEERING
FORESTRY & GROUNDS**



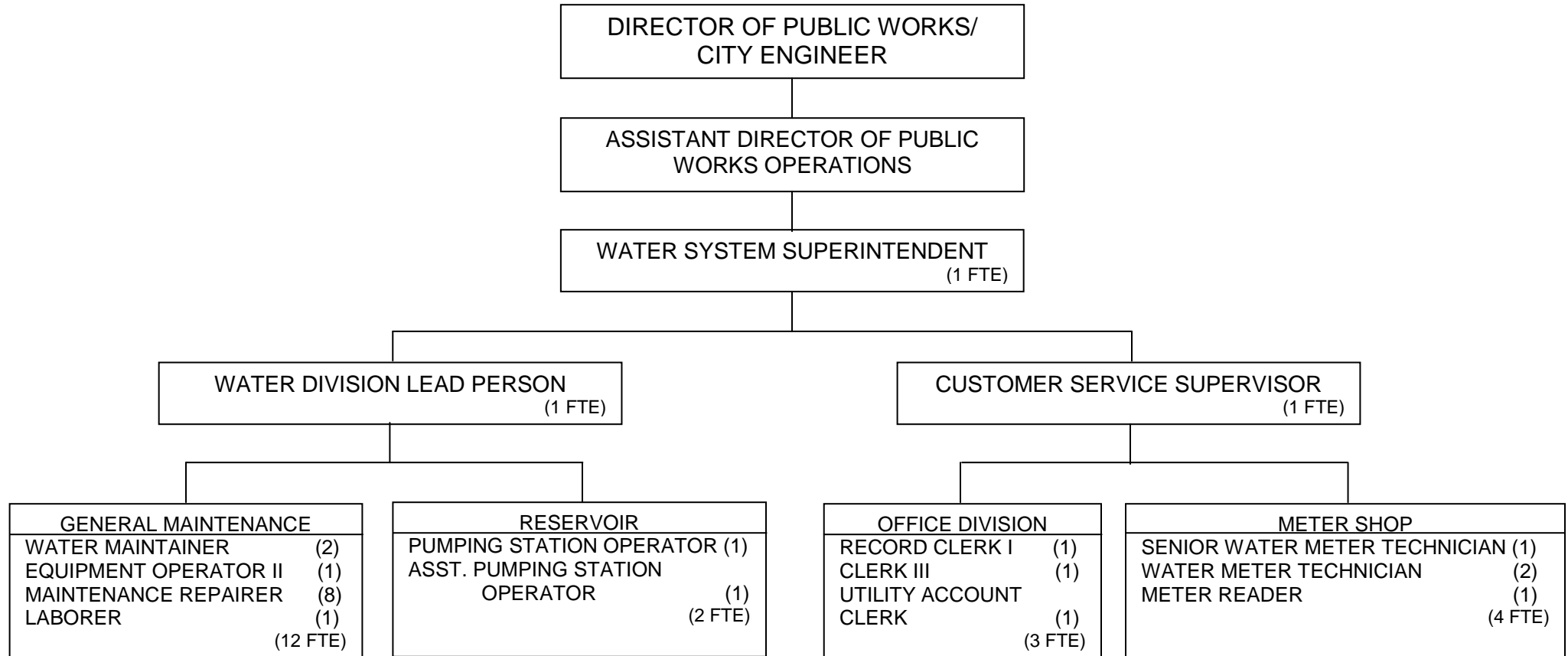
Org Chart does not reflect the twenty-four (24) temporary laborer positions.

**ORGANIZATIONAL CHART
PUBLIC WORKS / ENGINEERING
SANITATION & STREETS**



Org Chart does not reflect the seven (7) temporary laborer positions.

**ORGANIZATIONAL CHART
PUBLIC WORKS / ENGINEERING
WATER**



NOTE: Other personnel working in support of the Water Utility (A&F, Treasurer, PW, IT) are also funded by the Water Utility, but are not included on this chart. Further, some of the positions reflected above on this chart also perform work funded by other Utility Budgets (Sanitary, Storm, etc.).

**ORGANIZATIONAL CHART
PUBLIC WORKS/ENGINEERING
ENGINEERING**

