



# CITY OF WEST ALLIS

## Organizational Chart

# 2020

As per 2020 Adopted Budget



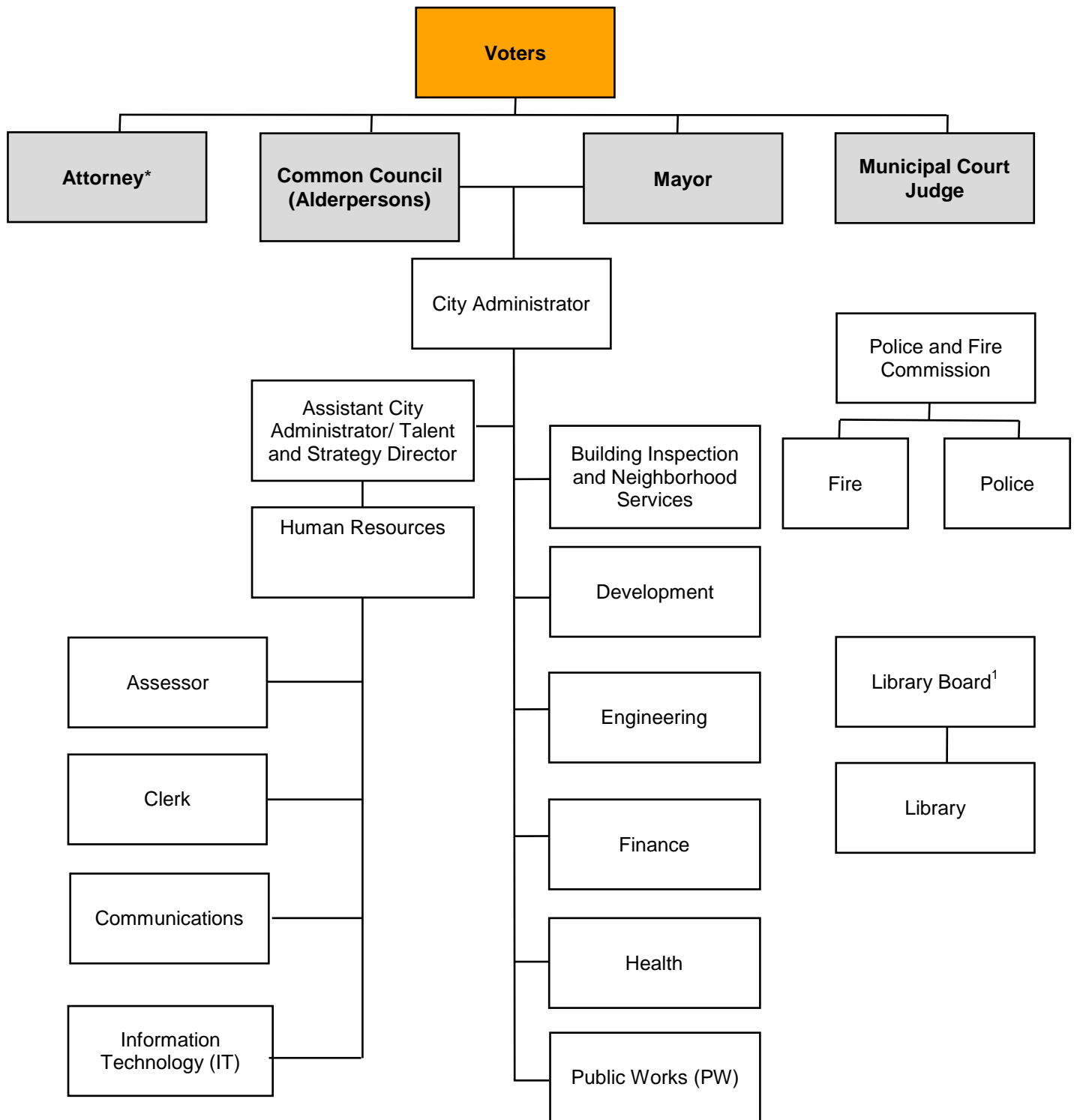
# ORGANIZATIONAL CHARTS

## January 2020

2020 ORGANIZATIONAL CHART CITY OF WEST ALLIS.....	3
COUNCIL STANDING COMMITTEES.....	4
ADVISORY COMMITTEES .....	5
MAYOR .....	6
ATTORNEY.....	7
MUNICIPAL COURT .....	8
CITY ADMINISTRATION.....	9
CITY ADMINISTRATION/HUMAN RESOURCES .....	10
ASSESSOR .....	11
BUILDING INSPECTION AND NEIGHBORHOOD SERVICES .....	12
CLERK.....	13
COMMUNICATIONS .....	14
DEVELOPMENT .....	15
ENGINEERING .....	16
FINANCE DEPARTMENT .....	17
FIRE .....	18
HEALTH.....	19
INFORMATION TECHNOLOGY .....	20
LIBRARY .....	21
POLICE .....	22
PUBLIC WORKS .....	22



## 2020 ORGANIZATIONAL CHART CITY OF WEST ALLIS

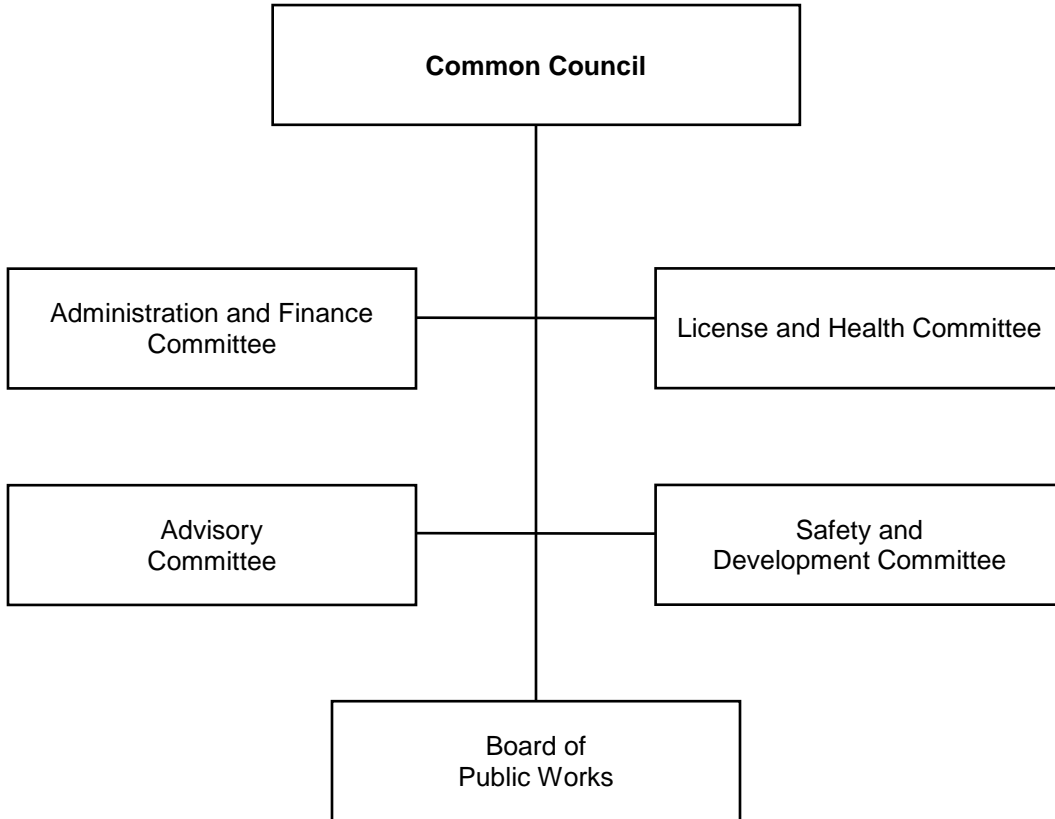


\* Elected until 5/1/2020

<sup>1</sup> Appointed by the Mayor and confirmed by the Common Council, with policy responsibility

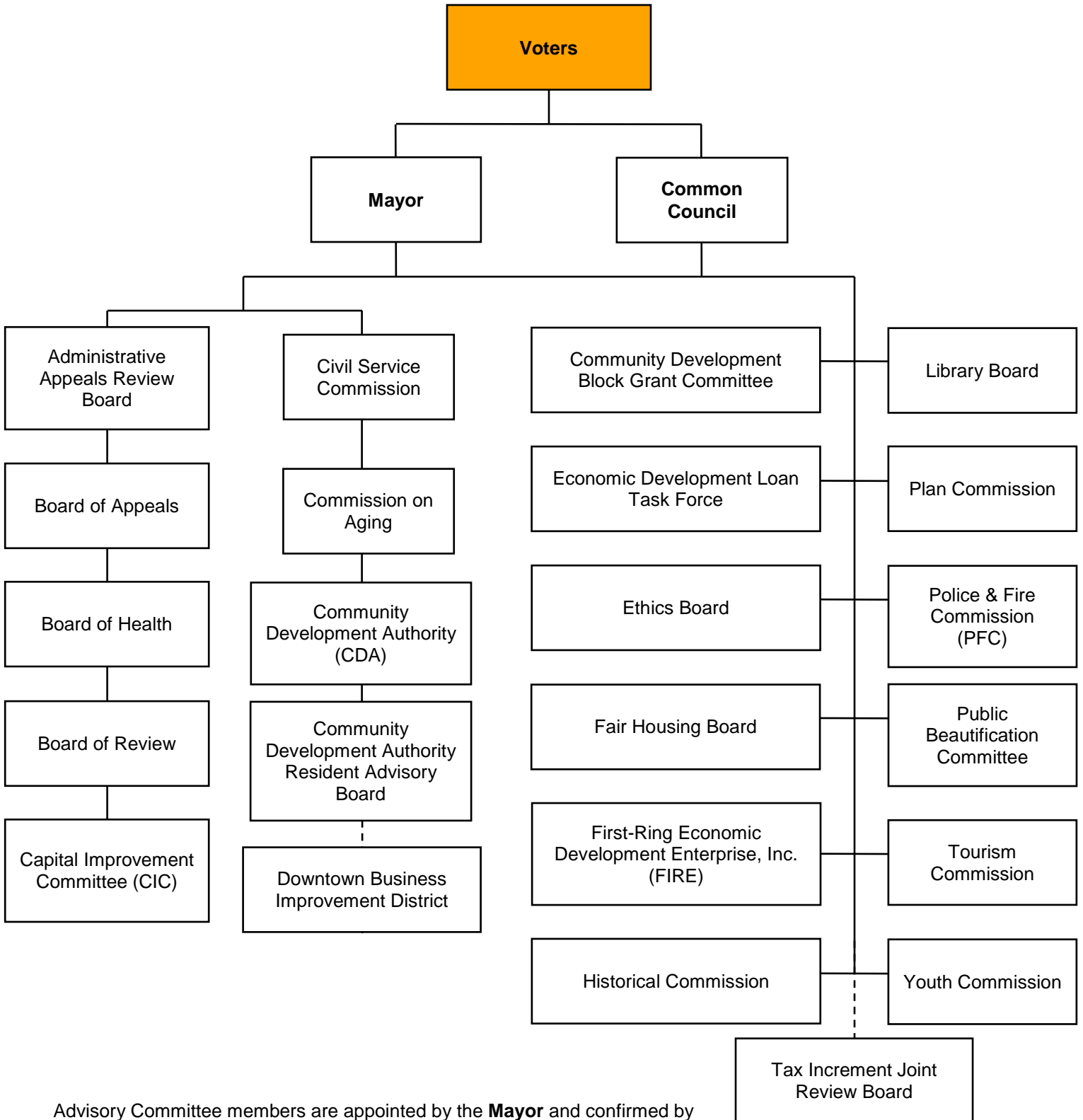


## COUNCIL STANDING COMMITTEES



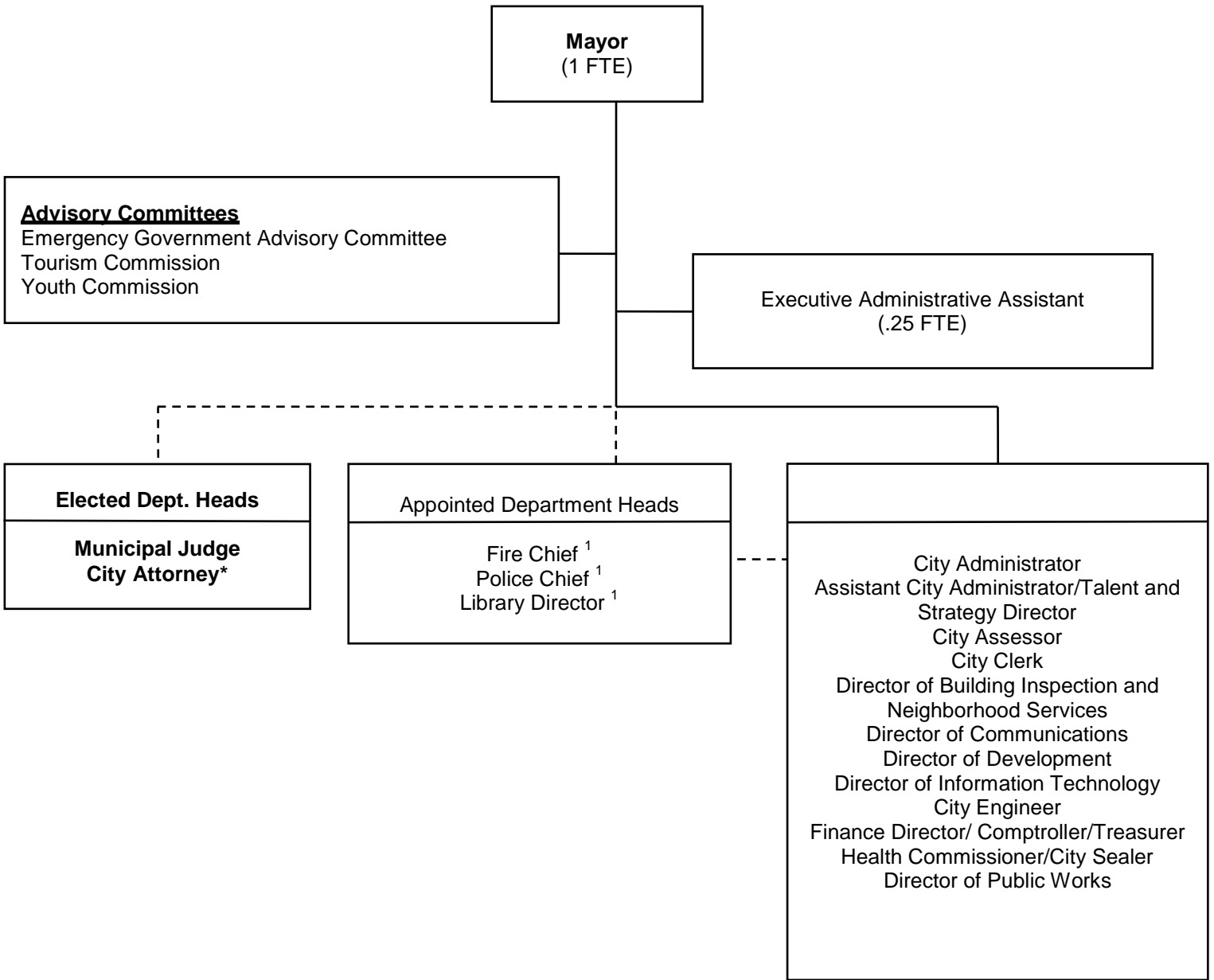


## ADVISORY COMMITTEES





# MAYOR



<sup>1</sup> Reports directly to Police & Fire Commission and Library Board respectively.

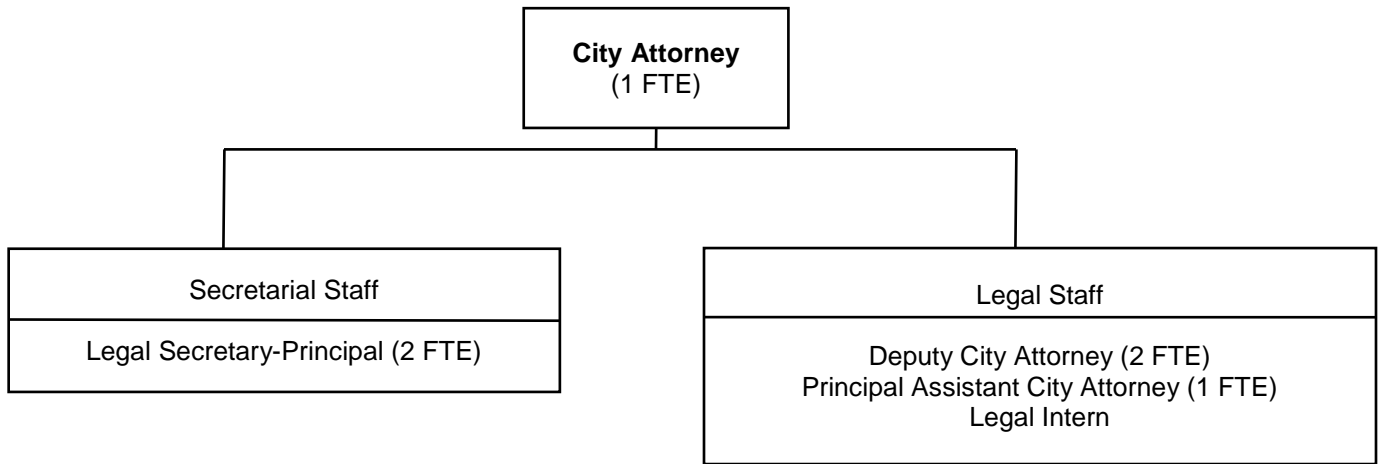
\* Appointed effective 5/1/20

Note: Solid lines indicate lines of people and program authority; dashed lines indicate lines of administrative and financial authority.

CITY FUNDED FTES: 1.25



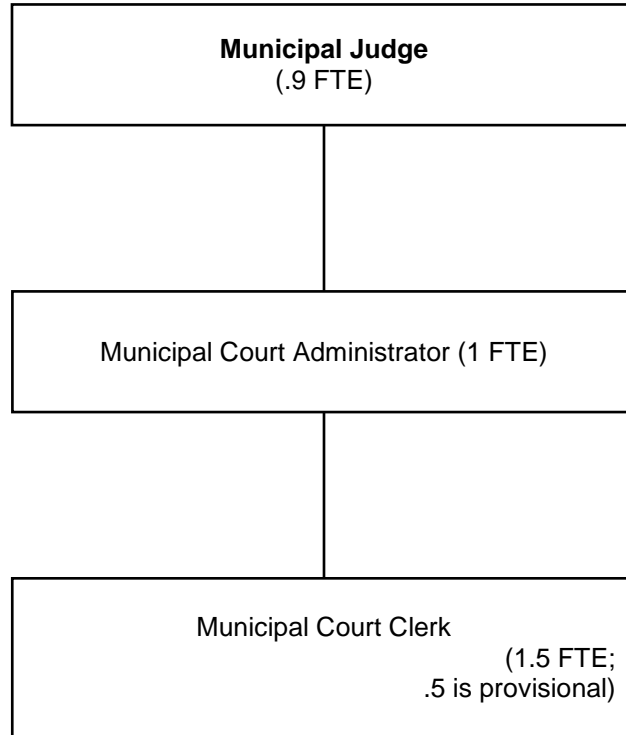
## ATTORNEY



CITY FUNDED FTES: 6.0



## MUNICIPAL COURT

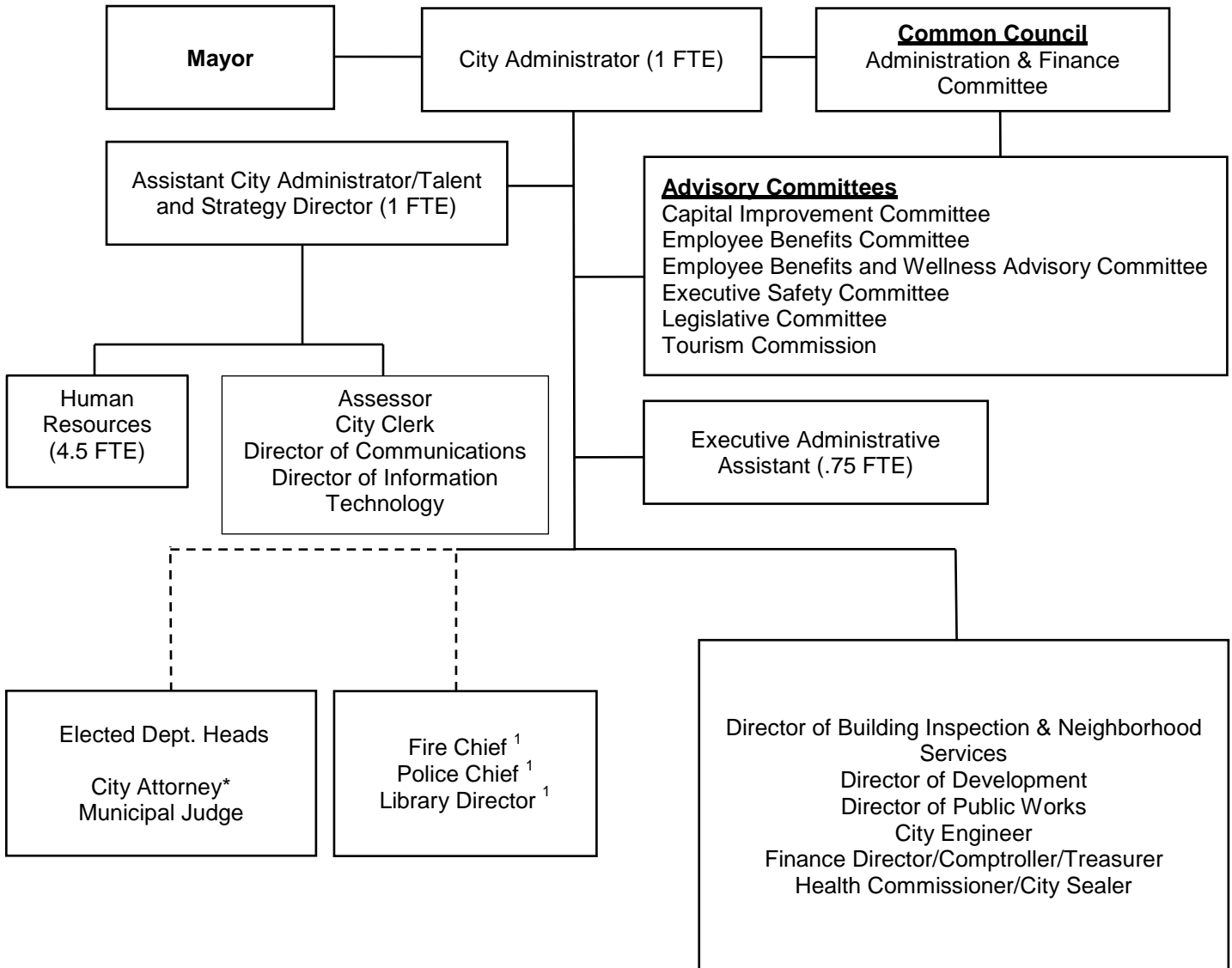


CITY FUNDED FTES: 3.40





## CITY ADMINISTRATION



<sup>1</sup> Reports directly to Police & Fire Commission and Library Board respectively.

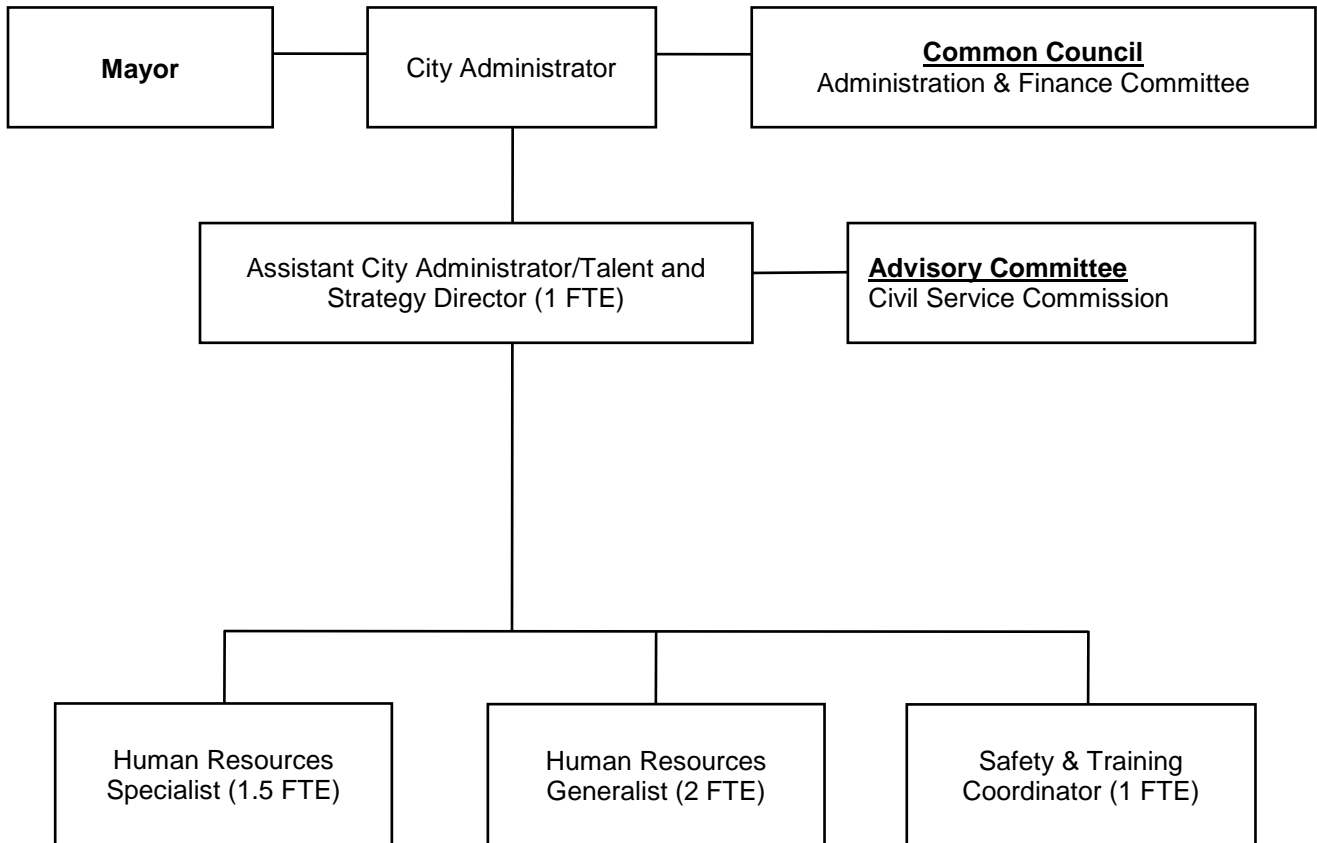
Note: Solid lines indicate lines of people and program authority; dashed lines indicate lines of administrative and financial authority.

\*Appointed effective 05/01/20

CITY FUNDED FTES: 7.25

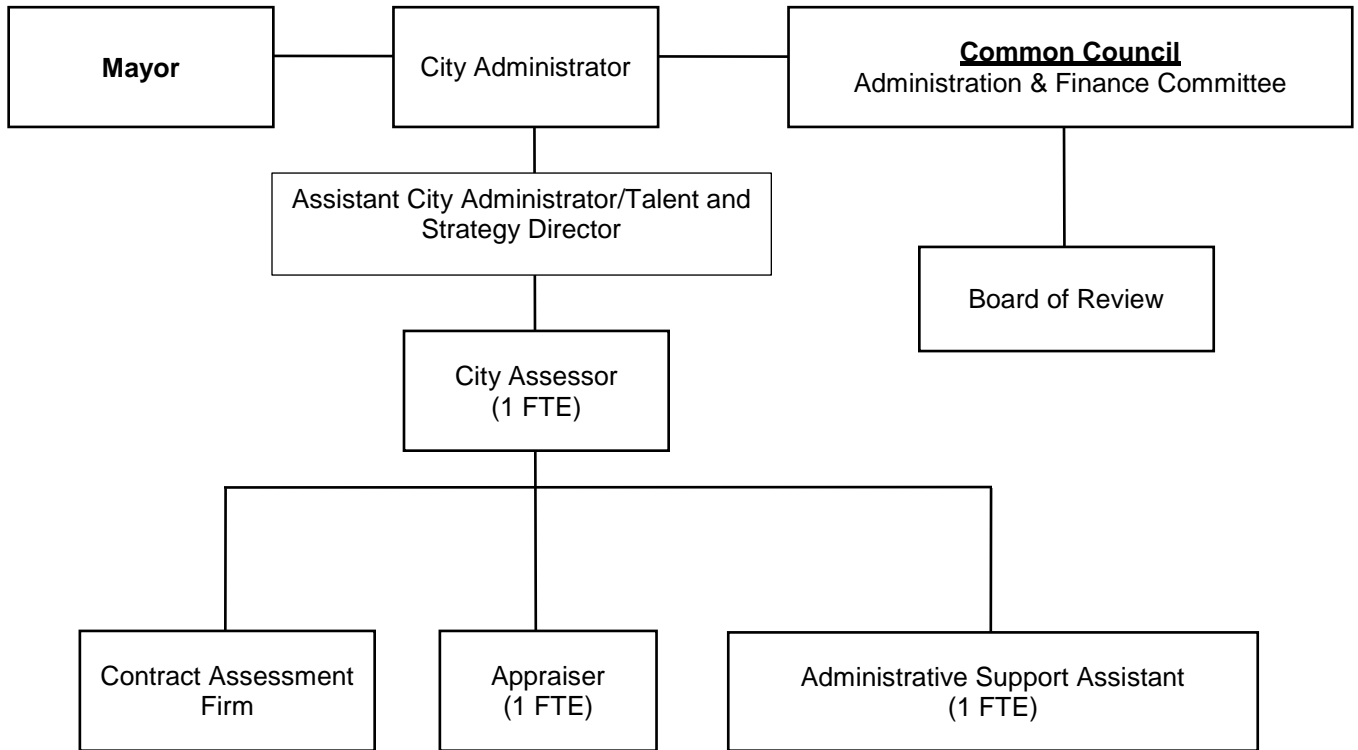


## CITY ADMINISTRATION/HUMAN RESOURCES





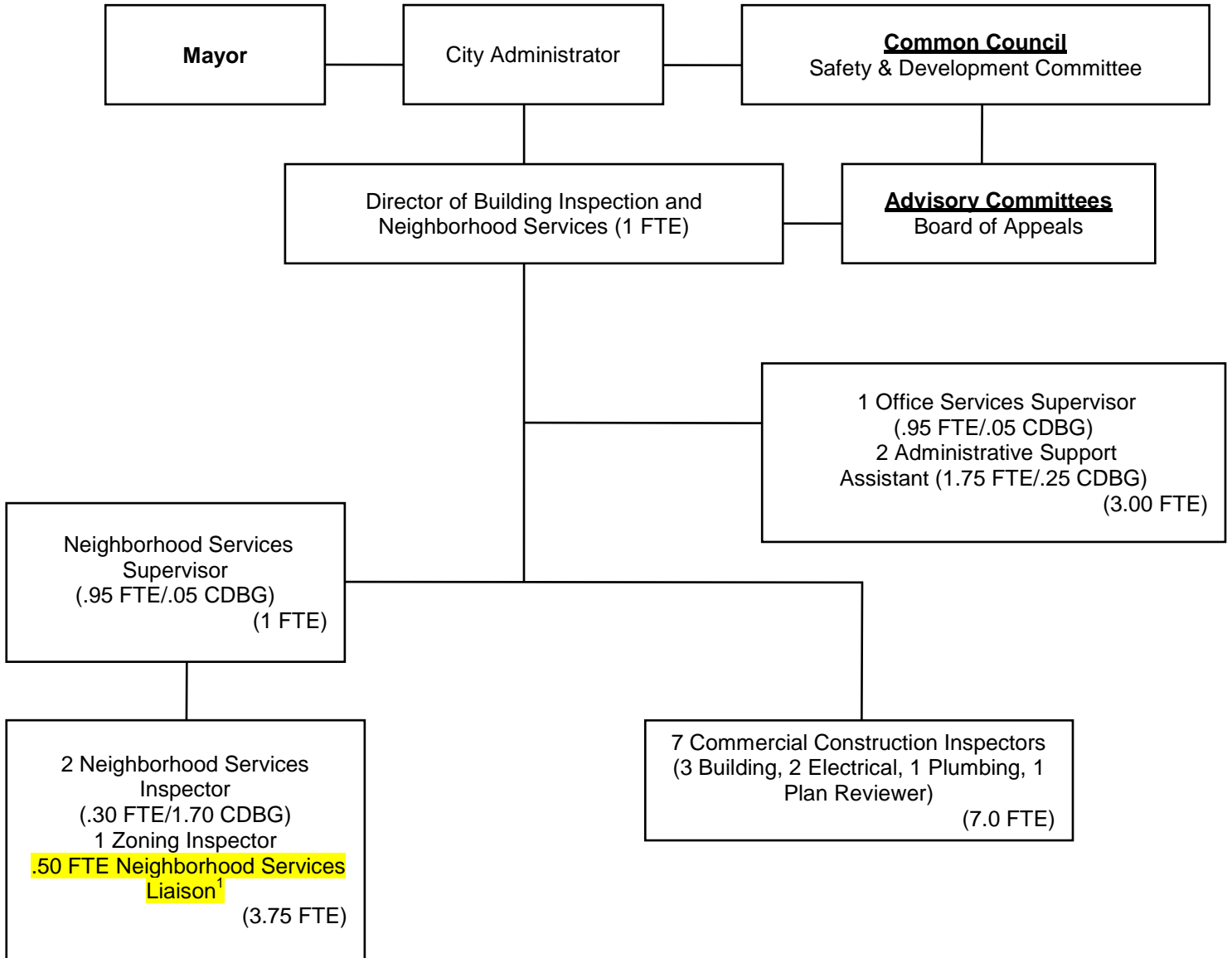
## ASSESSOR



CITY FUNDED FTES: 3.0



## BUILDING INSPECTION AND NEIGHBORHOOD SERVICES

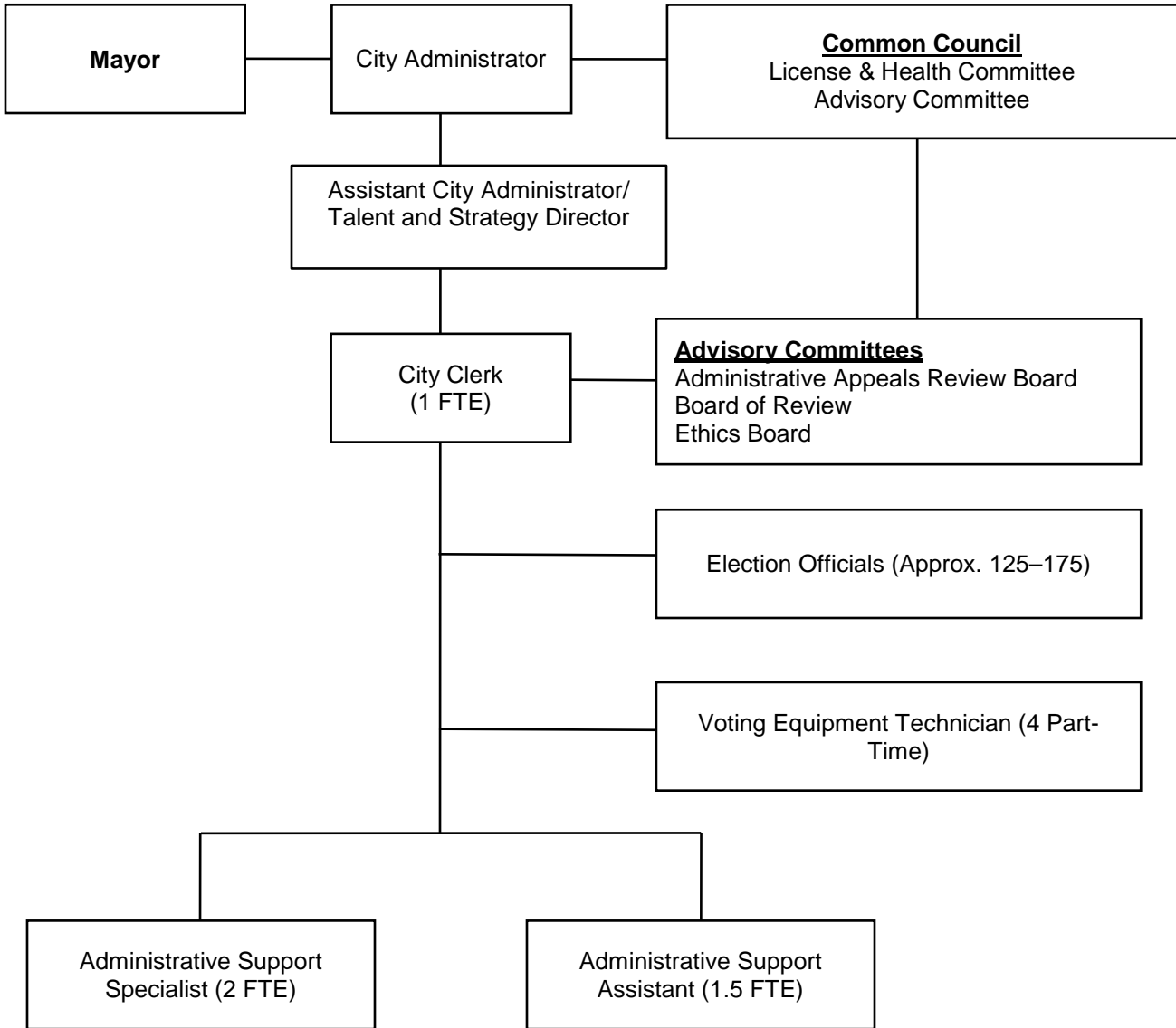


<sup>1</sup>This position is expected to return to 0.75 FTE if/when funding becomes available.

CITY FUNDED FTES: 13.45  
OTHER FUNDING SOURCES FTES: 2.05



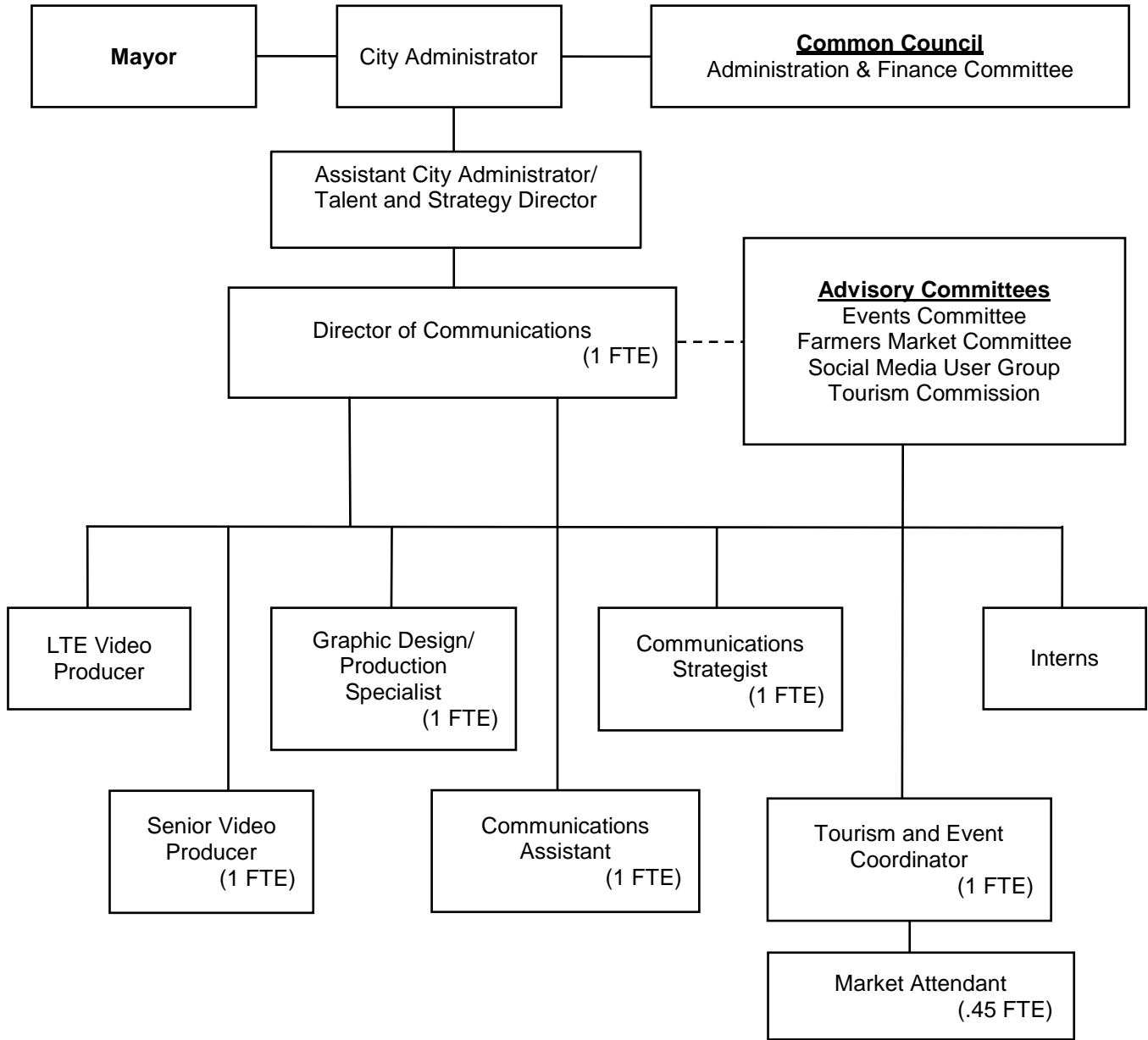
## CLERK



CITY FUNDED FTEs: 4.5



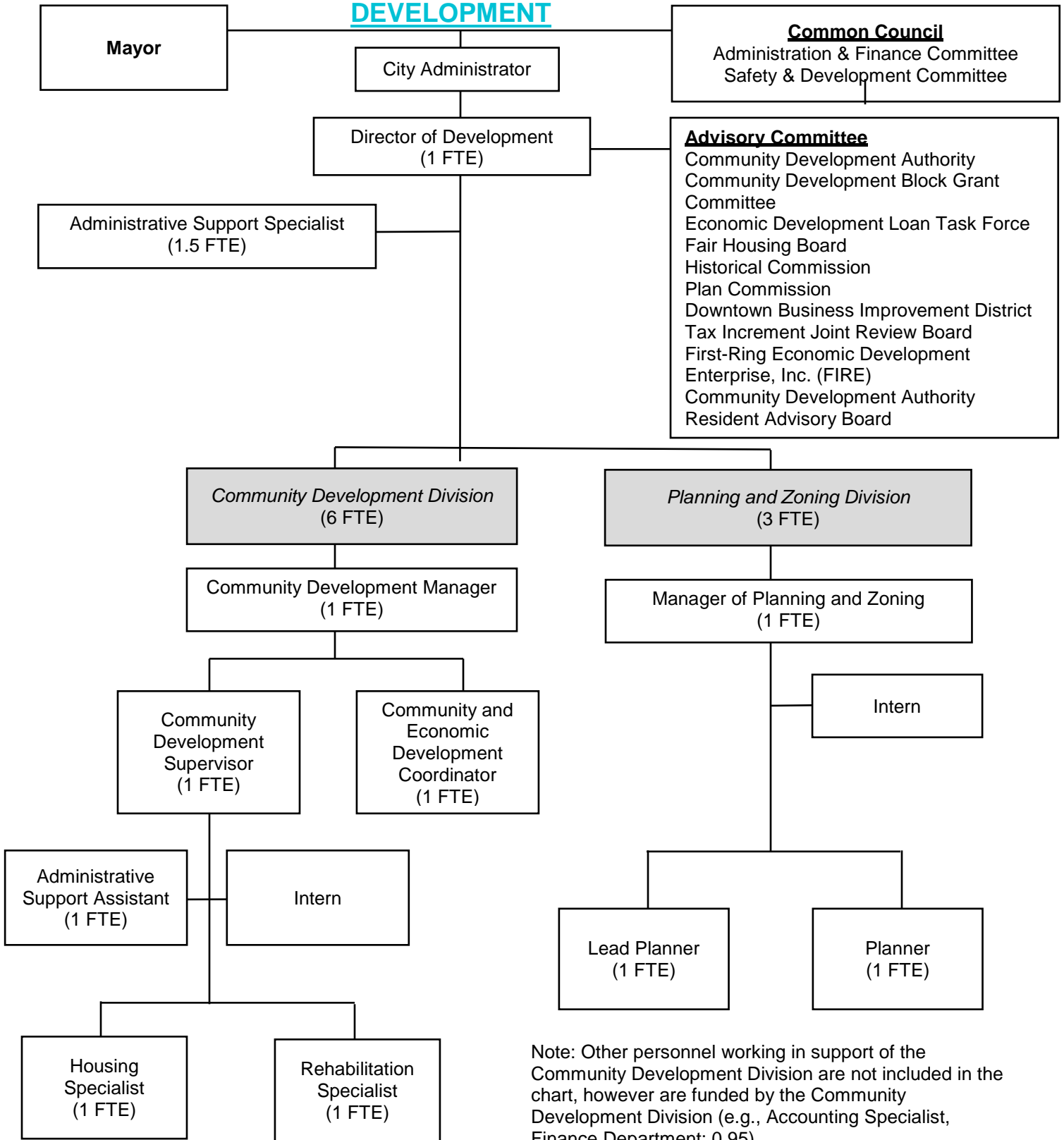
## COMMUNICATIONS



CITY FUNDED FTEs: 0.45  
OTHER FUNDING SOURCES FTEs: 6



**DEVELOPMENT**

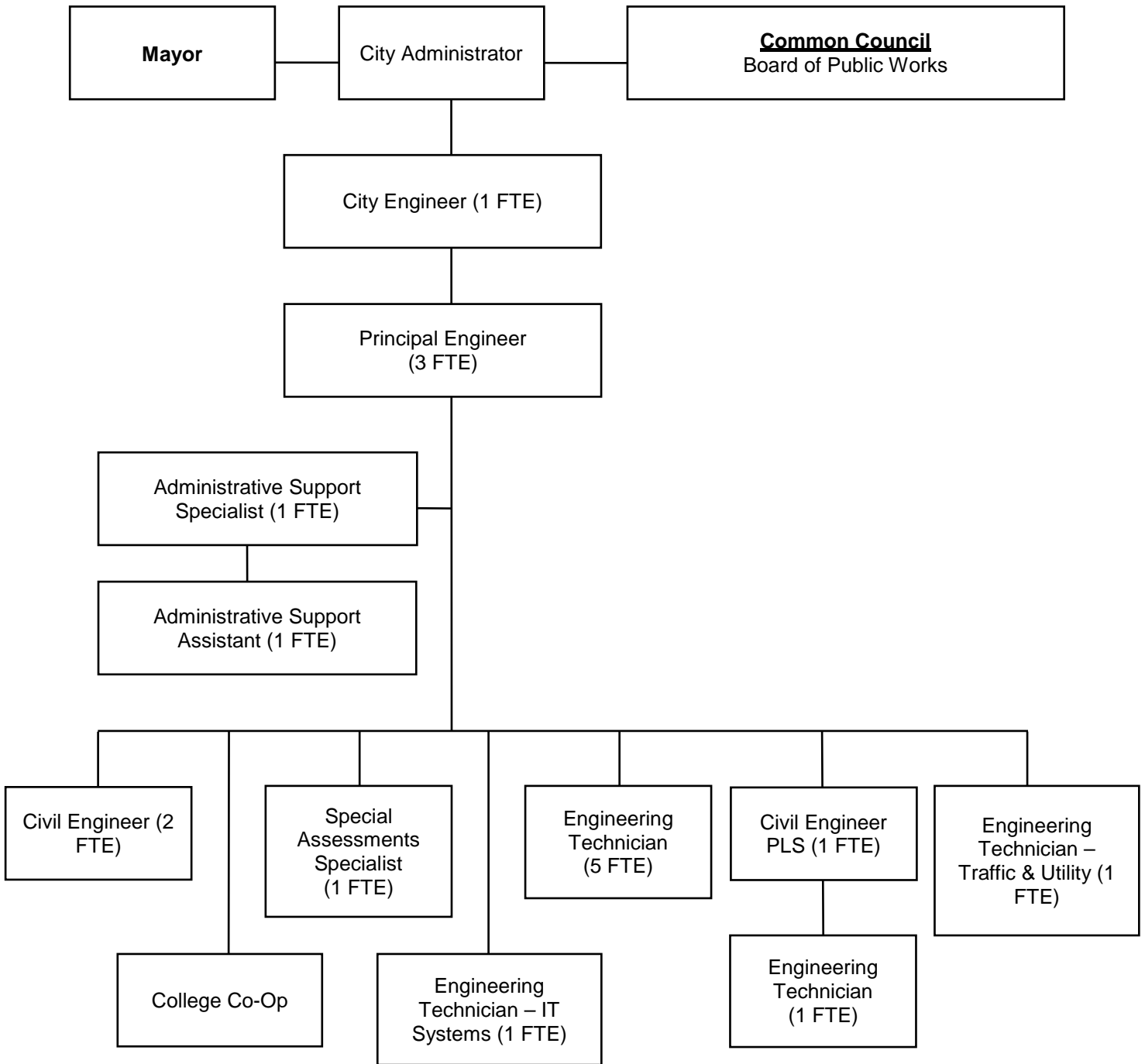


Note: Other personnel working in support of the Community Development Division are not included in the chart, however are funded by the Community Development Division (e.g., Accounting Specialist, Finance Department: 0.95).

CITY FUNDED FTEs: 5.2  
 OTHER FUNDING SOURCES FTEs: 6.3  
 FTEs: 11.5



## ENGINEERING

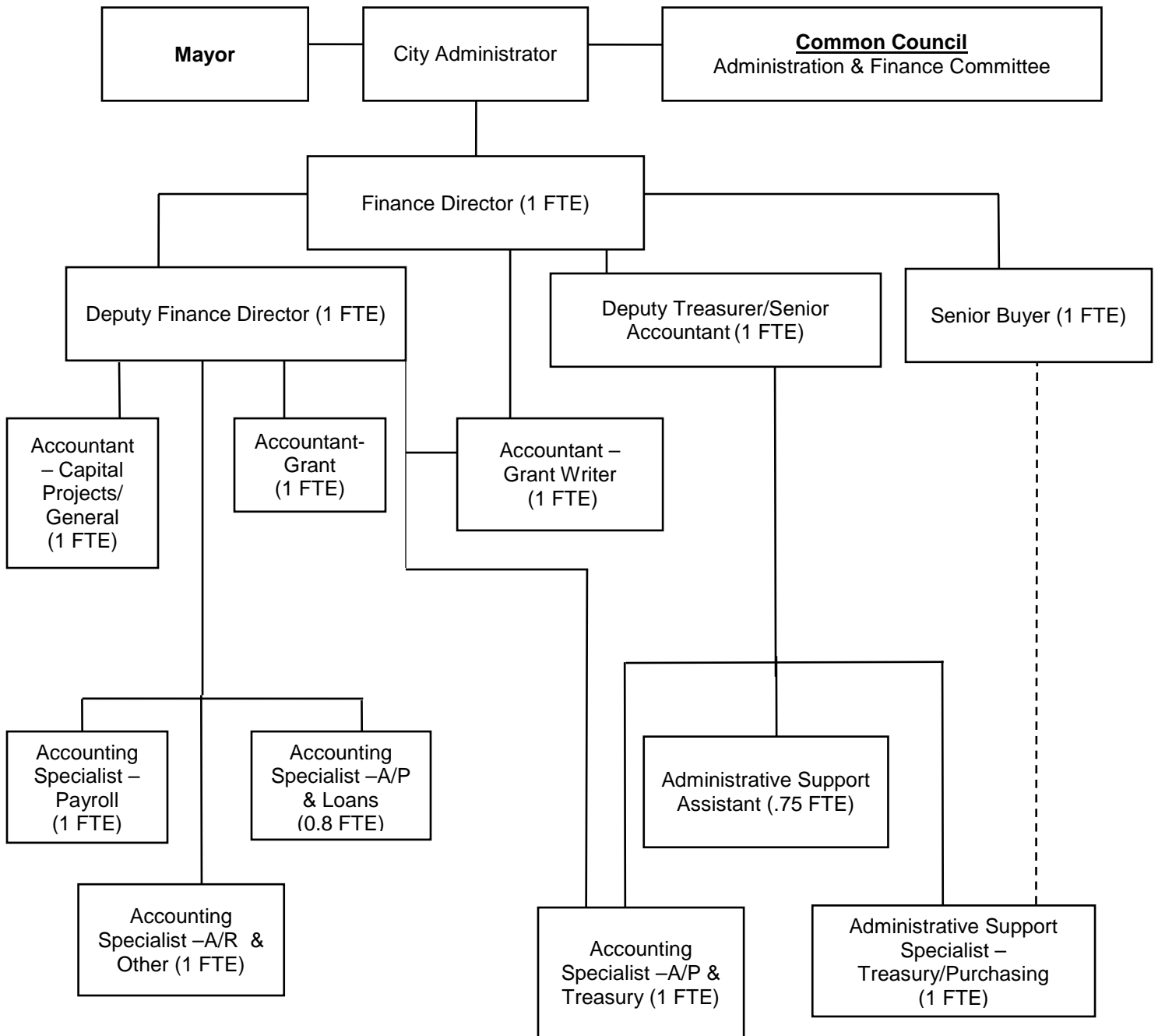


CITY FUNDED FTES: 18.00





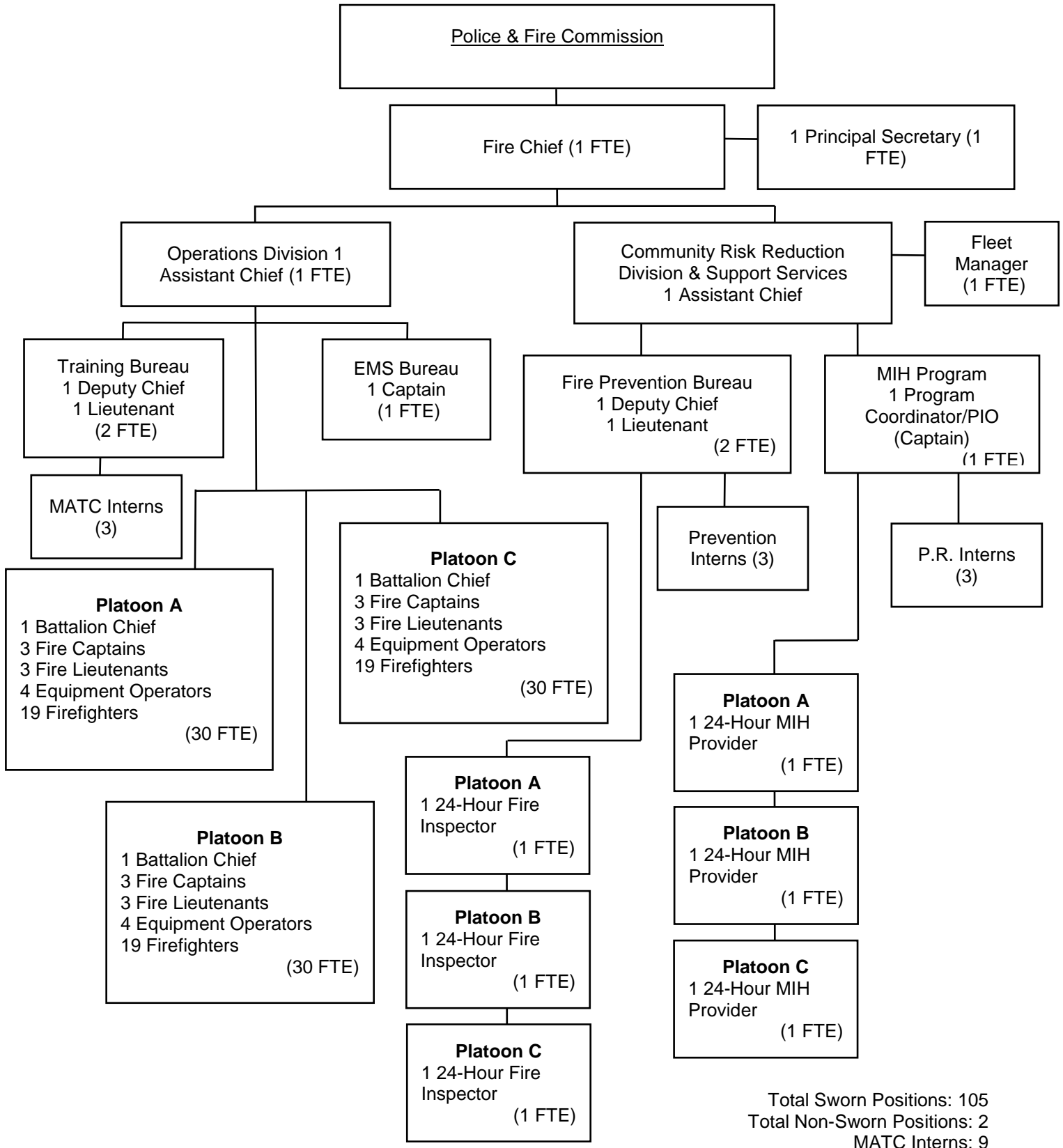
## FINANCE DEPARTMENT



CITY FUNDED FTES: 8.77  
 Grants FTES: .95  
 Utility FTES: 2.83



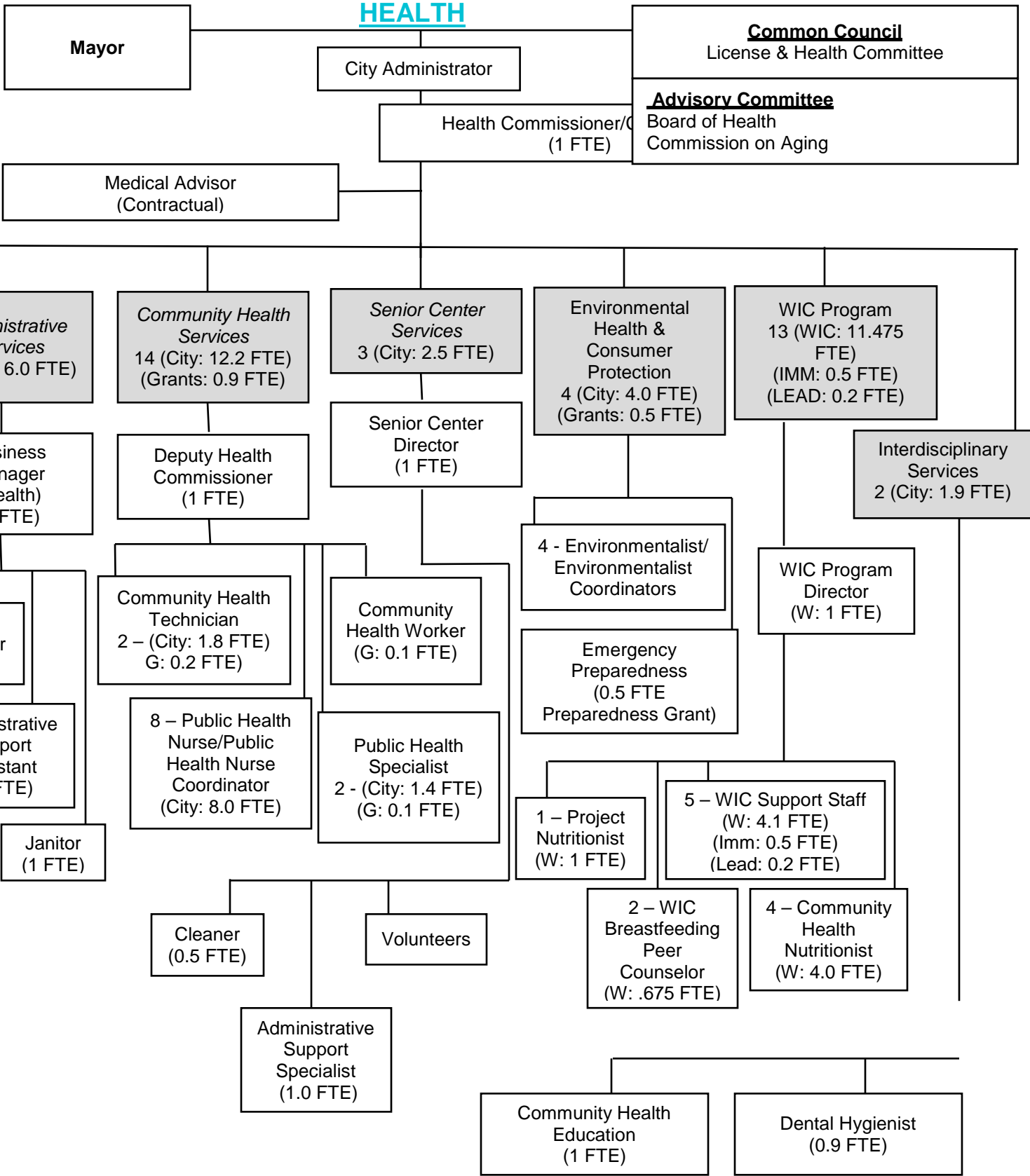
# FIRE



Total Sworn Positions: 105  
 Total Non-Sworn Positions: 2  
 MATC Interns: 9



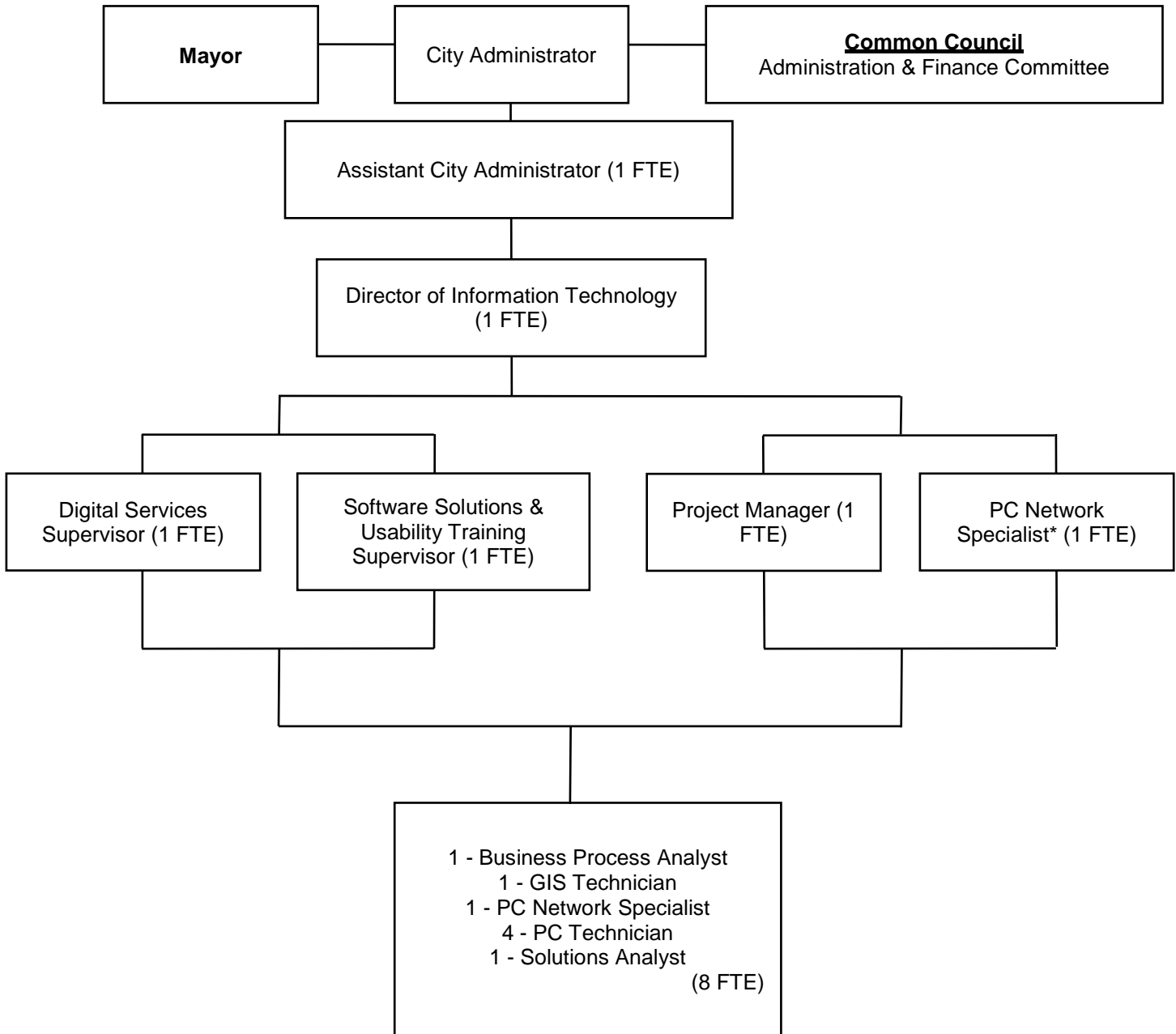
# HEALTH



CITY FUNDED FTE: 27.60  
 OTHER FUNDING SOURCES: 13.575



## INFORMATION TECHNOLOGY

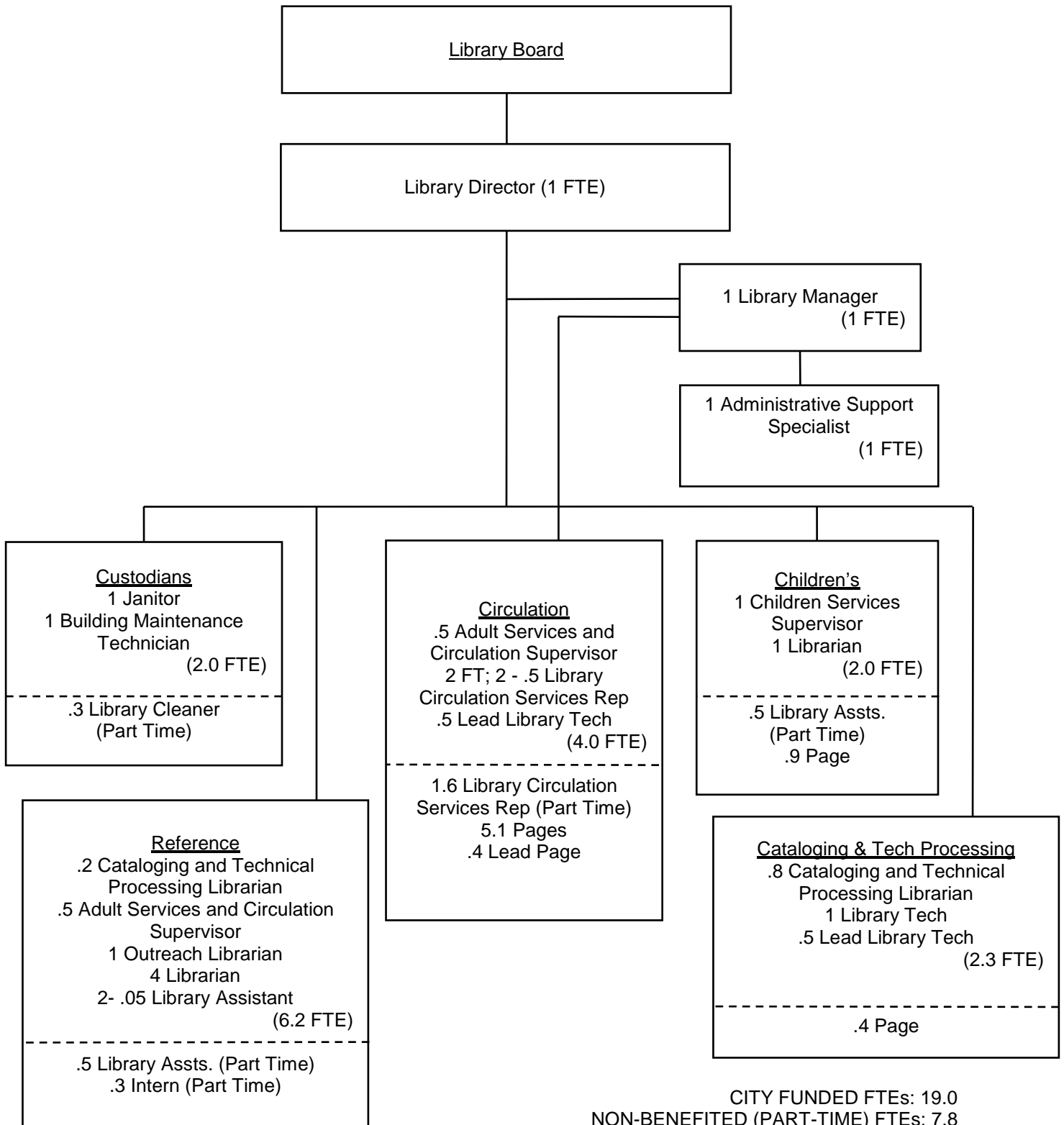


1 P.C. Network Specialist to support Police Department

CITY FUNDED FTES: 13.0



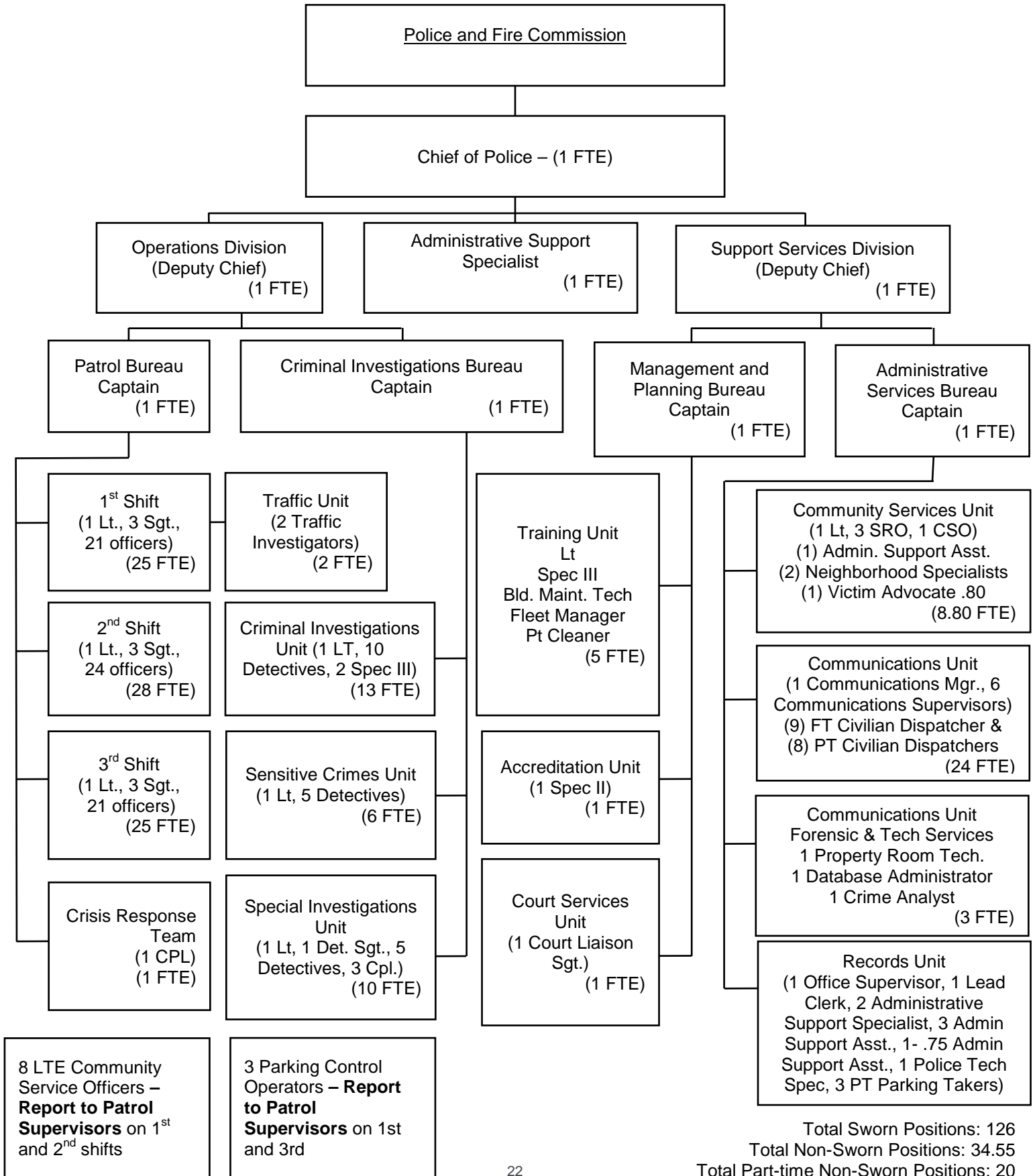
# LIBRARY



CITY FUNDED FTEs: 19.0  
 NON-BENEFITED (PART-TIME) FTEs: 7.8  
 TOTAL FTEs: 26.8

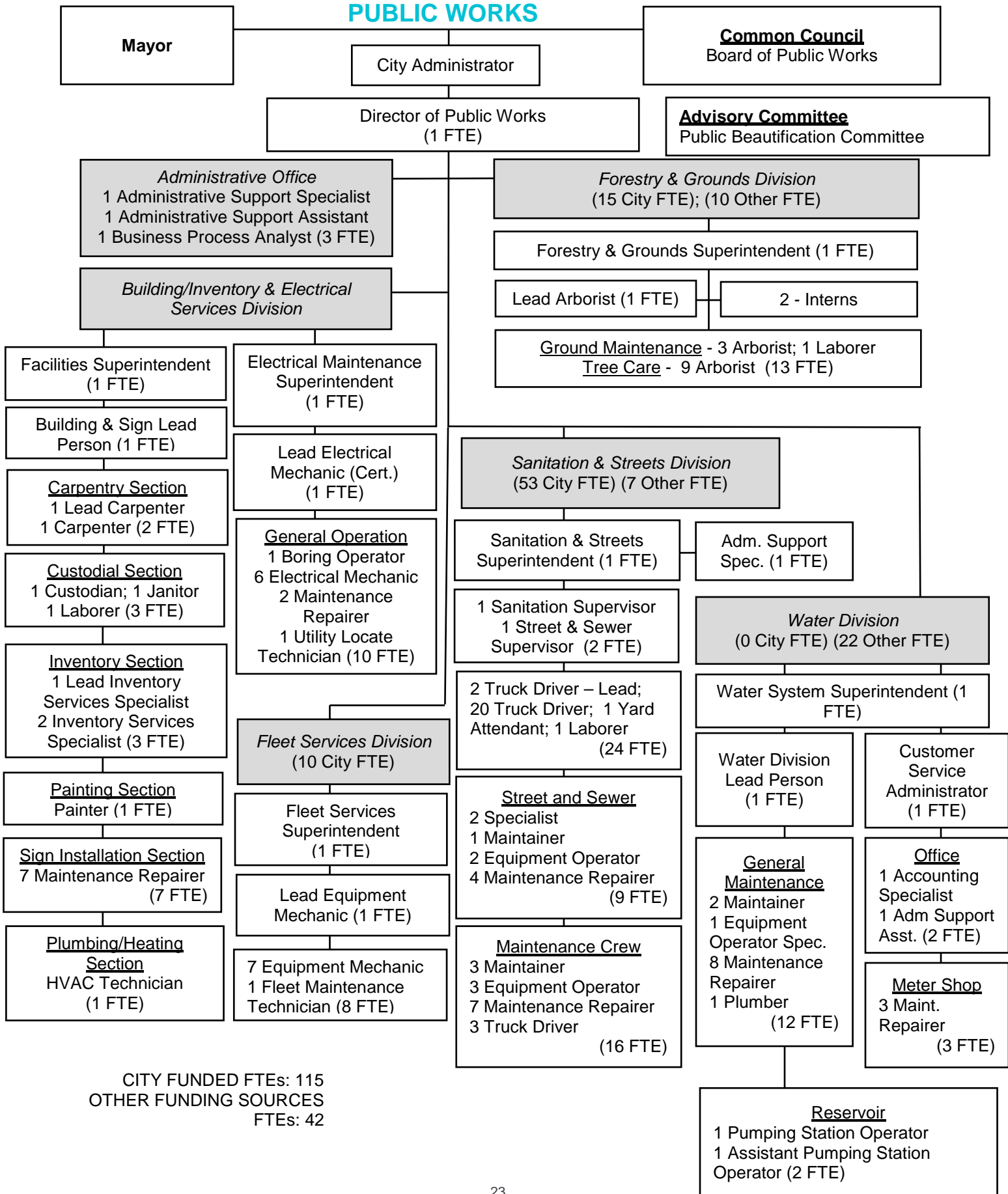


# POLICE





# PUBLIC WORKS



CITY FUNDED FTEs: 115  
 OTHER FUNDING SOURCES  
 FTEs: 42