



# CITY OF WEST ALLIS

## Organizational Chart

# 2019

Approved with the 2019 Budget



# ORGANIZATIONAL CHARTS

## January 2019

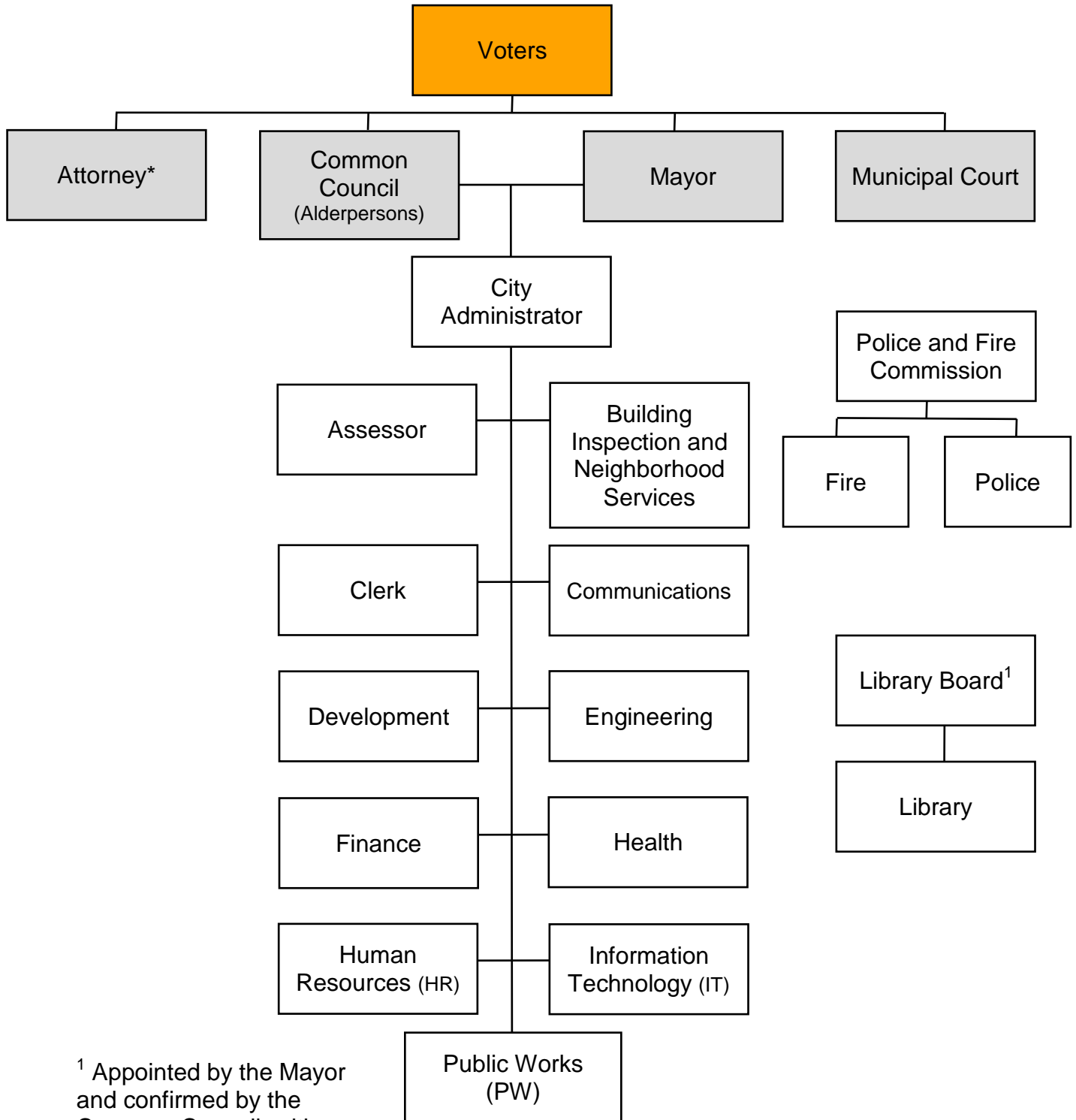
<b>2019 ORGANIZATIONAL CHART CITY OF WEST ALLIS .....</b>	<b>4</b>
<b>COUNCIL STANDING COMMITTEES .....</b>	<b>5</b>
<b>ADVISORY COMMITTEES .....</b>	<b>6</b>
<b>MAYOR .....</b>	<b>7</b>
<b>ATTORNEY.....</b>	<b>8</b>
<b>MUNICIPAL COURT.....</b>	<b>9</b>
<b>CITY ADMINISTRATOR .....</b>	<b>10</b>
<b>ASSESSOR.....</b>	<b>11</b>
<b>BUILDING INSPECTION AND NEIGHBORHOOD SERVICES .....</b>	<b>12</b>
<b>CLERK.....</b>	<b>13</b>
<b>COMMUNICATIONS.....</b>	<b>14</b>
<b>DEVELOPMENT .....</b>	<b>15</b>
<b>COMMUNITY DEVELOPMENT .....</b>	<b>16</b>
<b>PLANNING AND ZONING.....</b>	<b>17</b>
<b>ENGINEERING.....</b>	<b>18</b>
<b>FINANCE DEPARTMENT .....</b>	<b>19</b>
<b>FIRE.....</b>	<b>20</b>
<b>HEALTH .....</b>	<b>21</b>
<b>HEALTH ADMINISTRATIVE SERVICES .....</b>	<b>22</b>
<b>HEALTH COMMUNITY HEALTH SERVICES.....</b>	<b>23</b>
<b>HEALTH ENVIRONMENTAL HEALTH &amp; CONSUMER PROTECTION.....</b>	<b>24</b>
<b>HEALTH INTERDISCIPLINARY HEALTH SERVICES.....</b>	<b>25</b>
<b>HEALTH SENIOR CENTER .....</b>	<b>26</b>
<b>HEALTH WOMEN, INFANTS AND CHILDREN (WIC) PROGRAM.....</b>	<b>27</b>
<b>HUMAN RESOURCES.....</b>	<b>28</b>
<b>INFORMATION TECHNOLOGY .....</b>	<b>29</b>
<b>LIBRARY .....</b>	<b>30</b>
<b>POLICE .....</b>	<b>31</b>



<b>PUBLIC WORKS.....</b>	<b>32</b>
<b>PUBLIC WORKS ADMINISTRATIVE OFFICE .....</b>	<b>33</b>
<b>PUBLIC WORKS BUILDING/INVENTORY AND ELECTRICAL SERVICES .....</b>	<b>34</b>
<b>PUBLIC WORKS FLEET SERVICES .....</b>	<b>35</b>
<b>PUBLIC WORKS FORESTRY &amp; GROUNDS .....</b>	<b>36</b>
<b>PUBLIC WORKS SANITATION &amp; STREETS.....</b>	<b>37</b>
<b>PUBLIC WORKS WATER.....</b>	<b>38</b>



## 2019 ORGANIZATIONAL CHART CITY OF WEST ALLIS

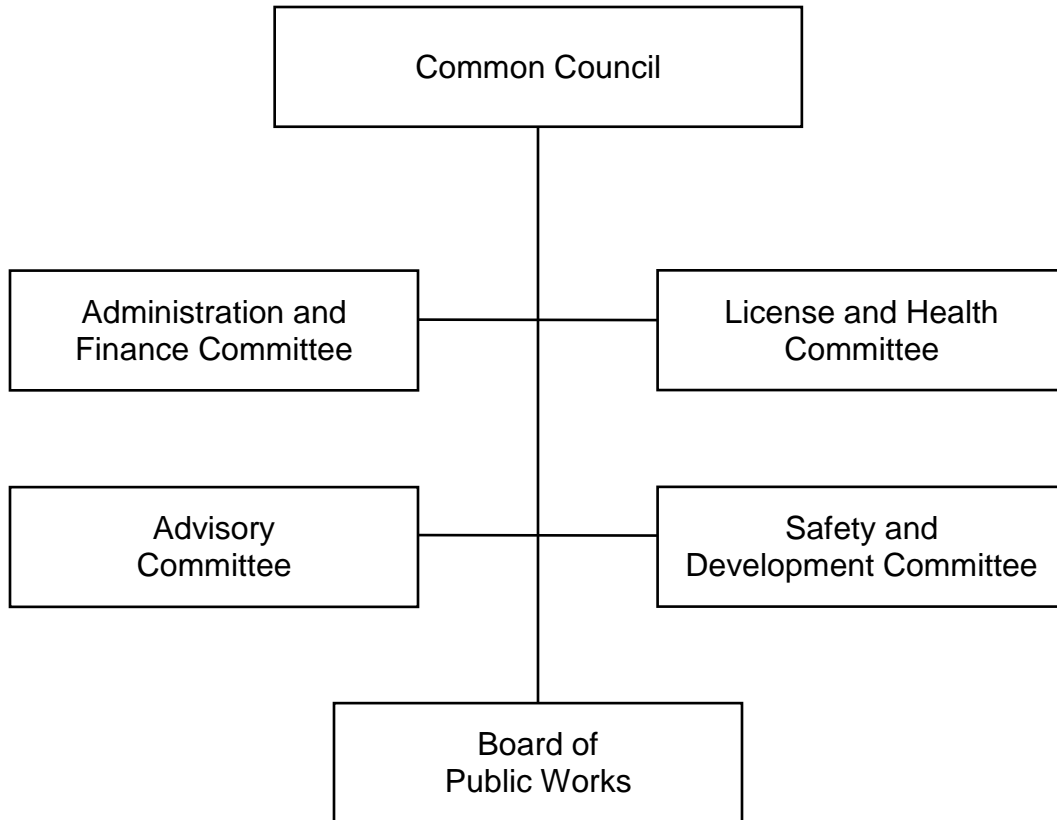


<sup>1</sup> Appointed by the Mayor and confirmed by the Common Council, with policy responsibility

\* Elected until 5/1/2020

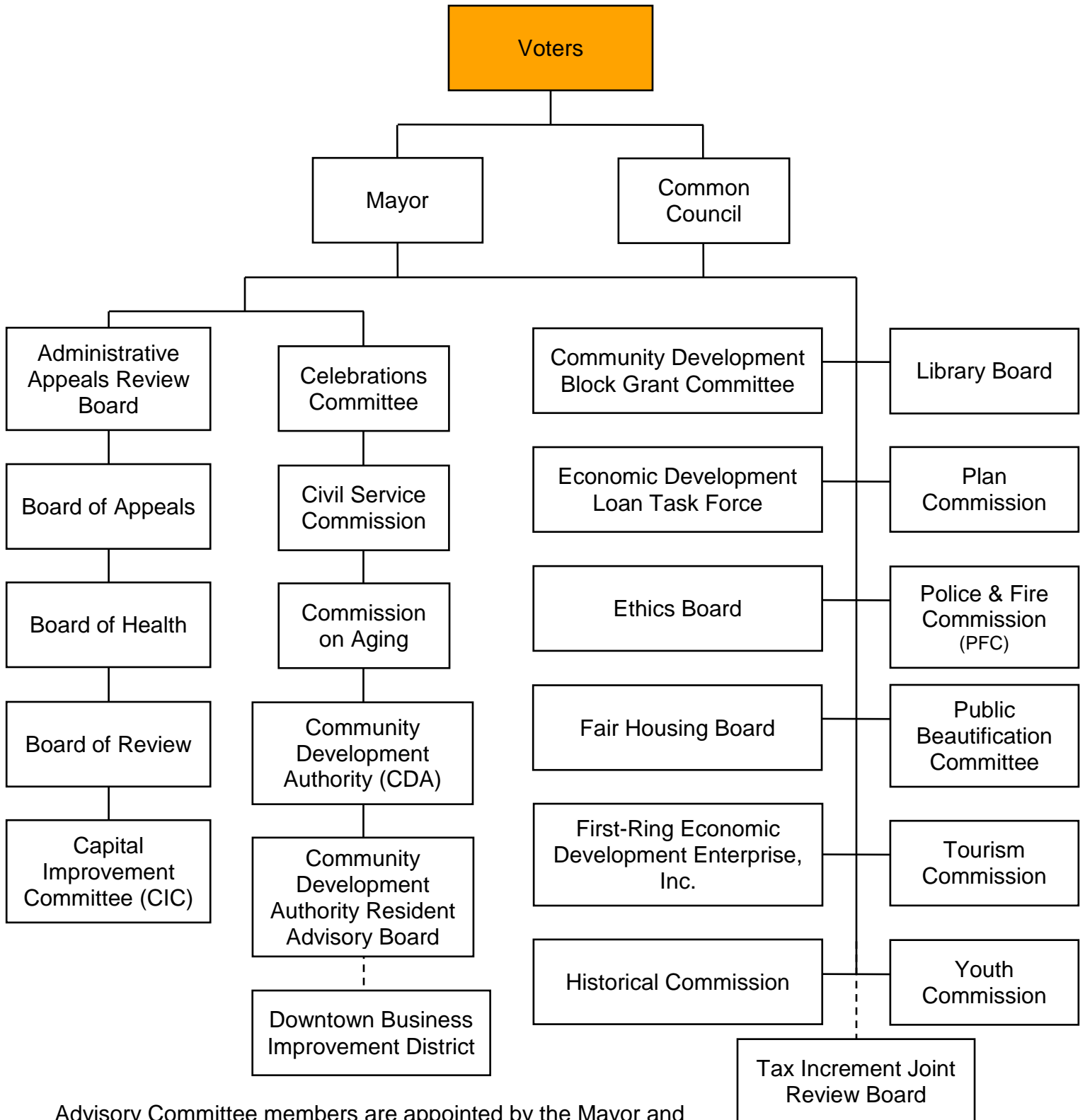


## COUNCIL STANDING COMMITTEES





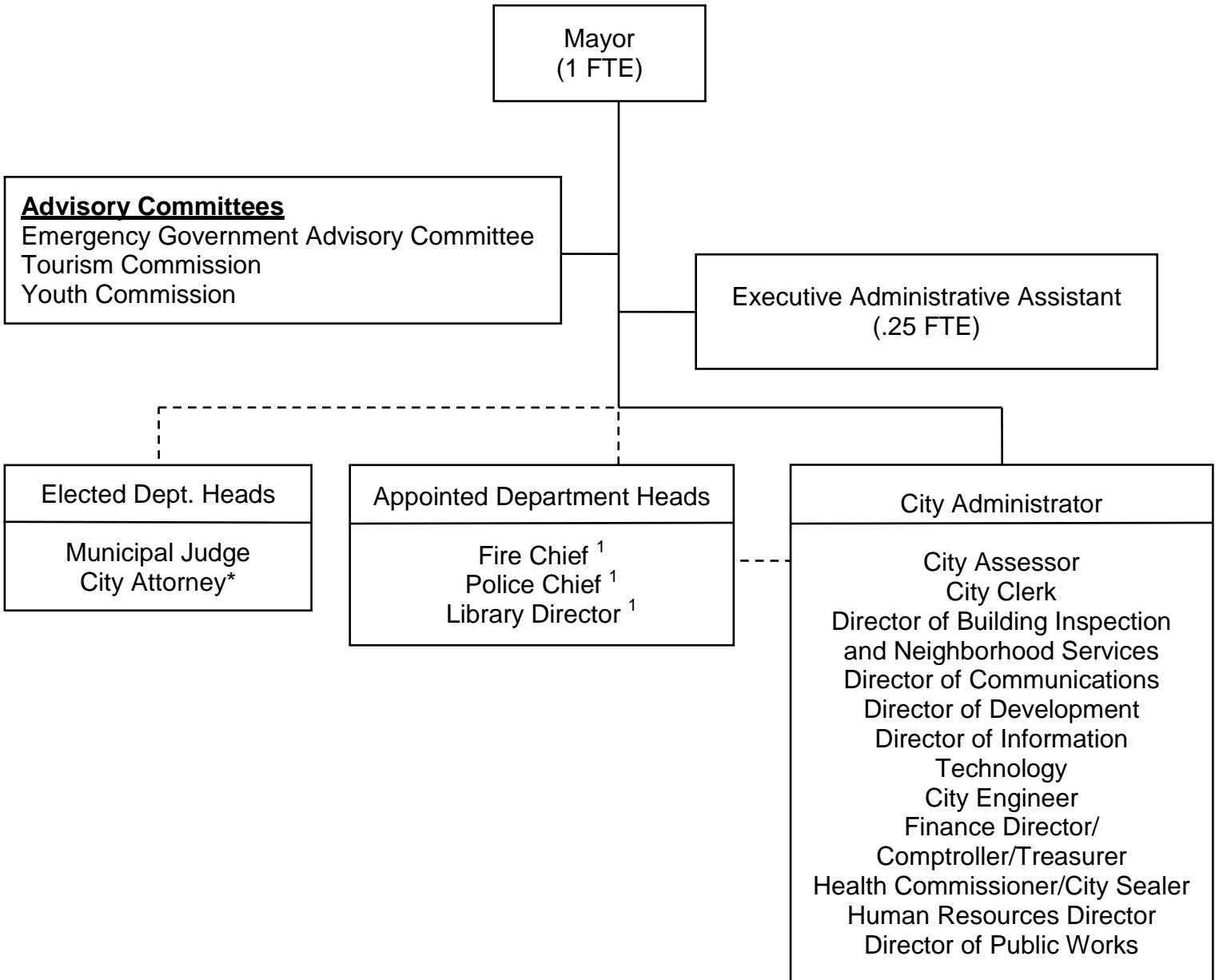
## ADVISORY COMMITTEES



Advisory Committee members are appointed by the Mayor and confirmed by the Common Council



## MAYOR



<sup>1</sup> Reports directly to Police & Fire Commission and Library Board respectively.

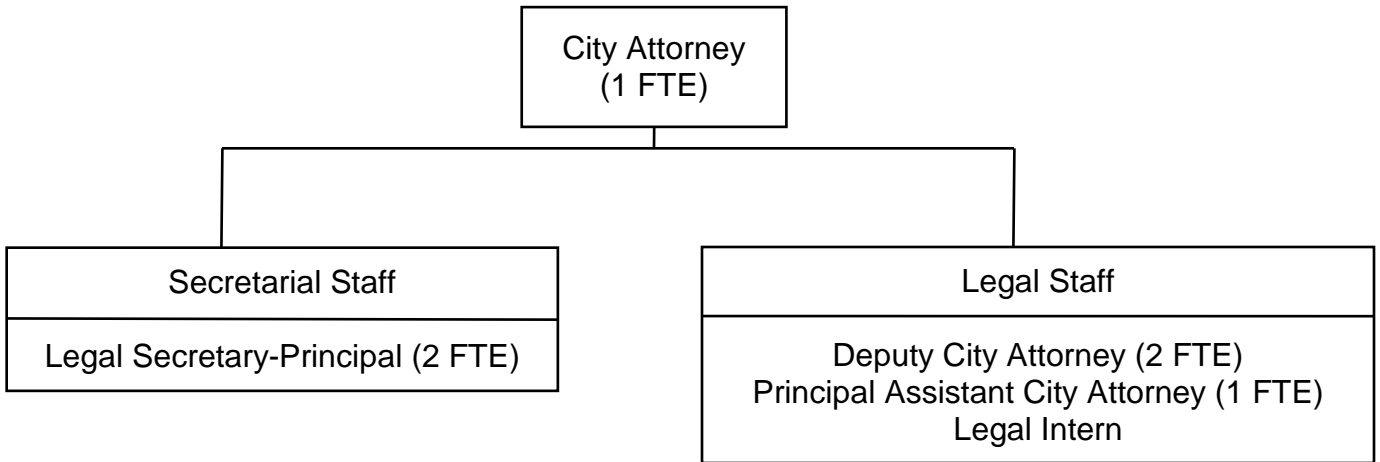
\* Appointed effective 5/1/20

Note: Solid lines indicate lines of people and program authority; dashed lines indicate lines of administrative and financial authority.

CITY FUNDED FTES: 1.25



## ATTORNEY

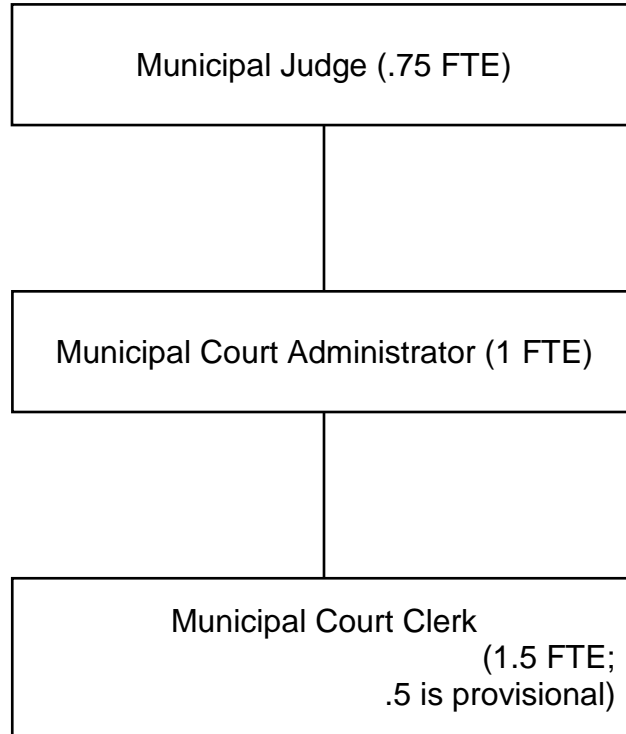


CITY FUNDED FTES: 6.0



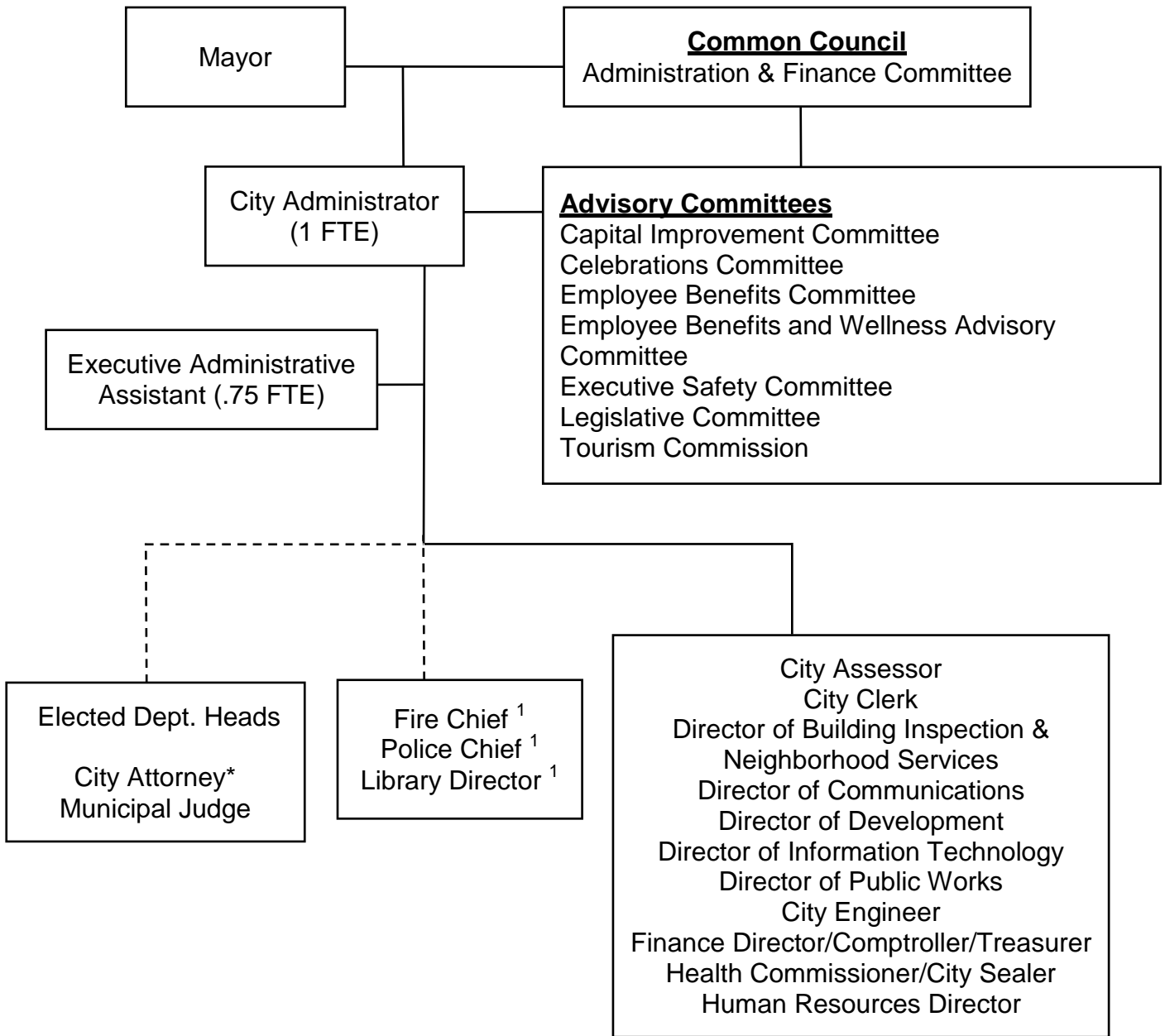


## MUNICIPAL COURT





## CITY ADMINISTRATOR



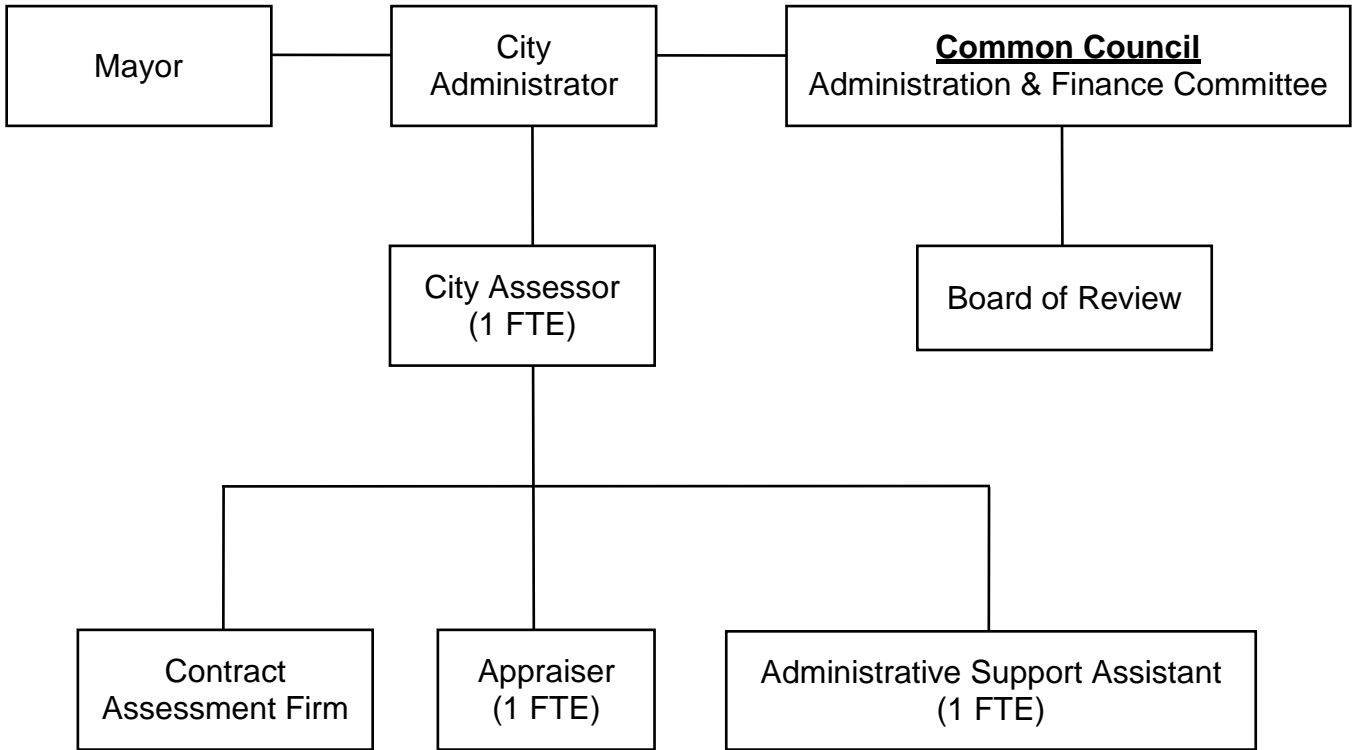
<sup>1</sup> Reports directly to Police & Fire Commission and Library Board respectively.

Note: Solid lines indicate lines of people and program authority; dashed lines indicate lines of administrative and financial authority.

\*Appointed effective 05/01/20



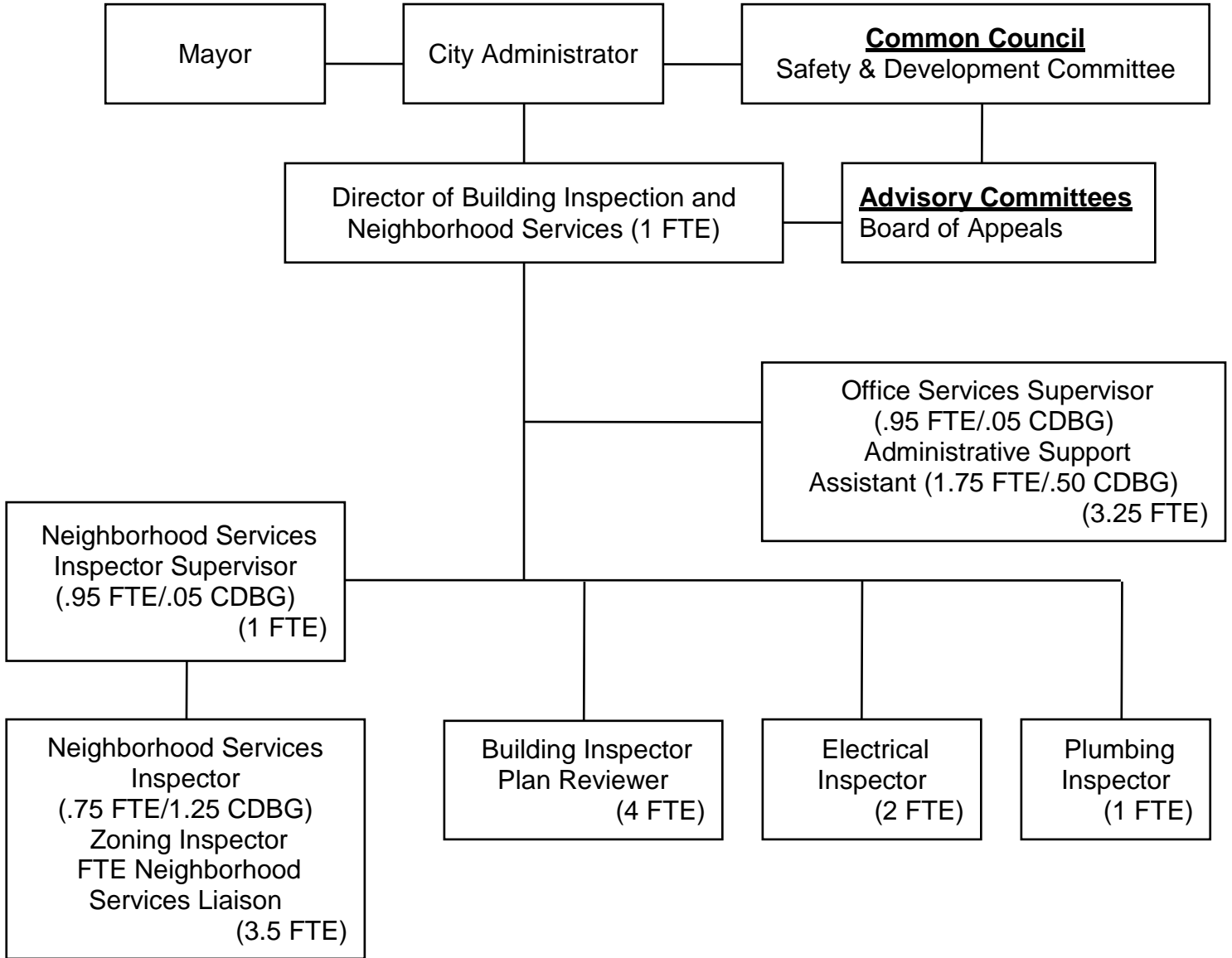
## ASSESSOR



CITY FUNDED FTES: 3.0



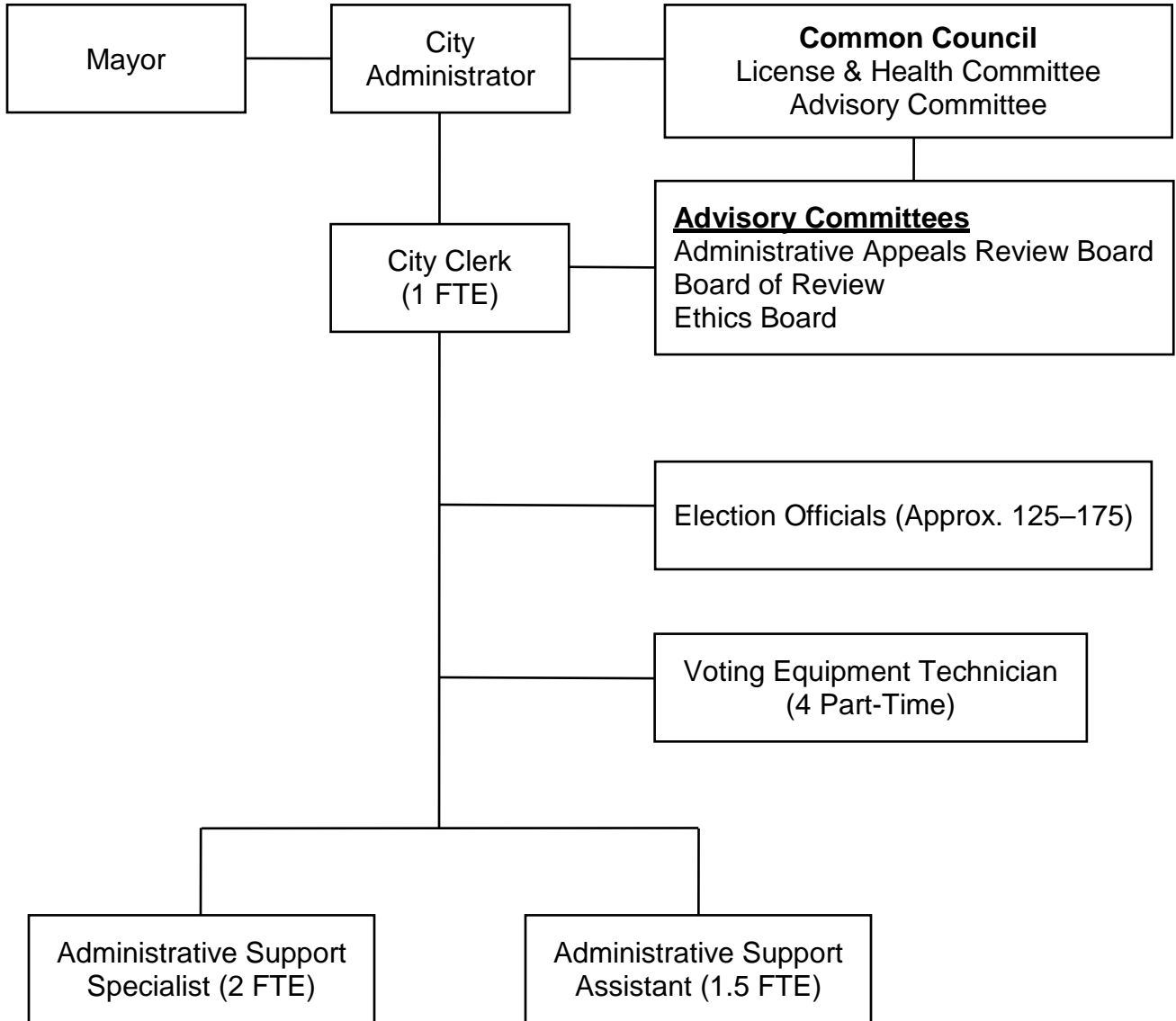
## BUILDING INSPECTION AND NEIGHBORHOOD SERVICES



CITY FUNDED FTES: 13.90  
OTHER FUNDING SOURCES FTES: 1.85



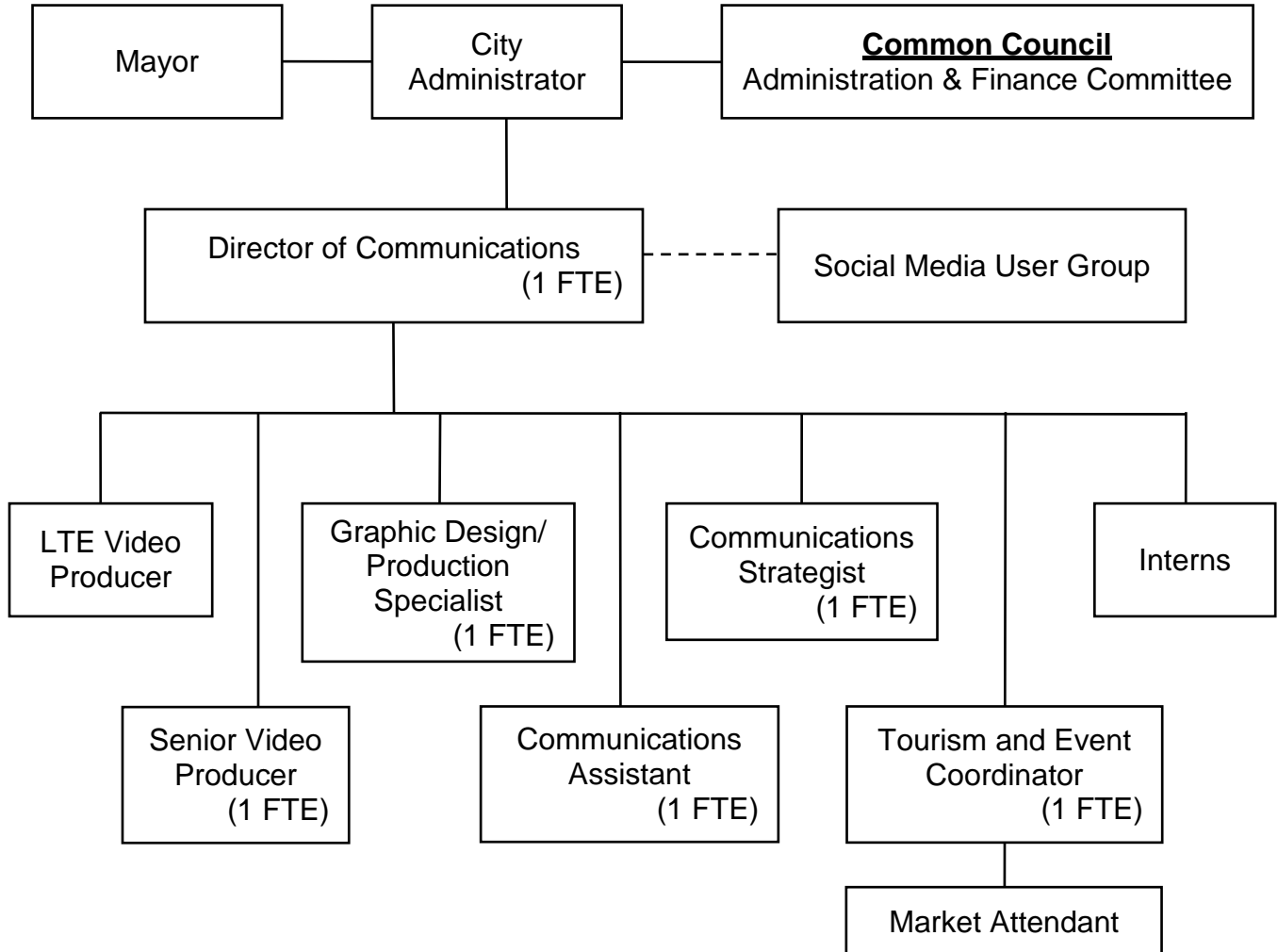
## CLERK



CITY FUNDED FTEs: 4.5



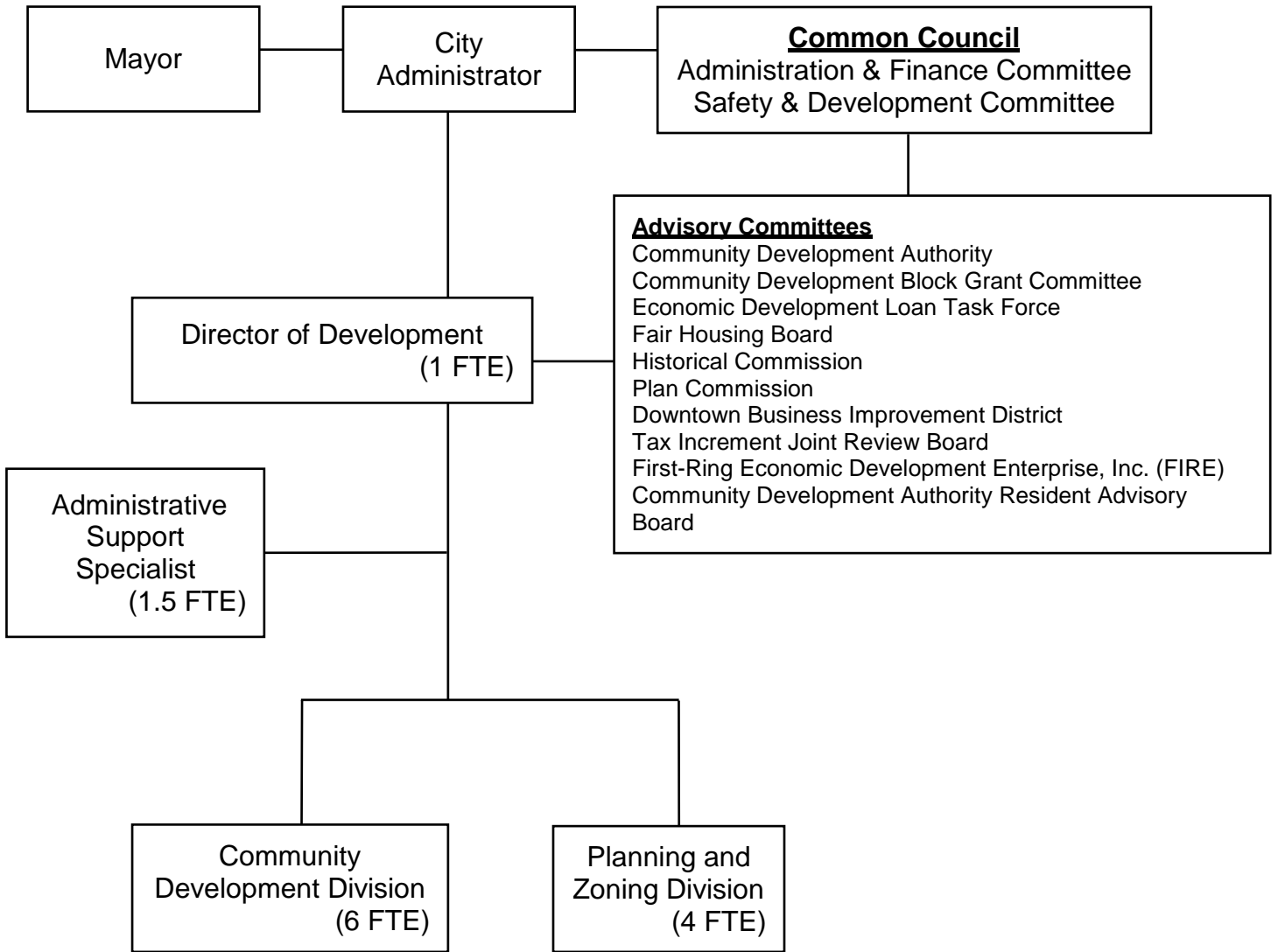
## COMMUNICATIONS



CITY FUNDED FTEs: 0.45  
OTHER FUNDING SOURCES FTEs: 6



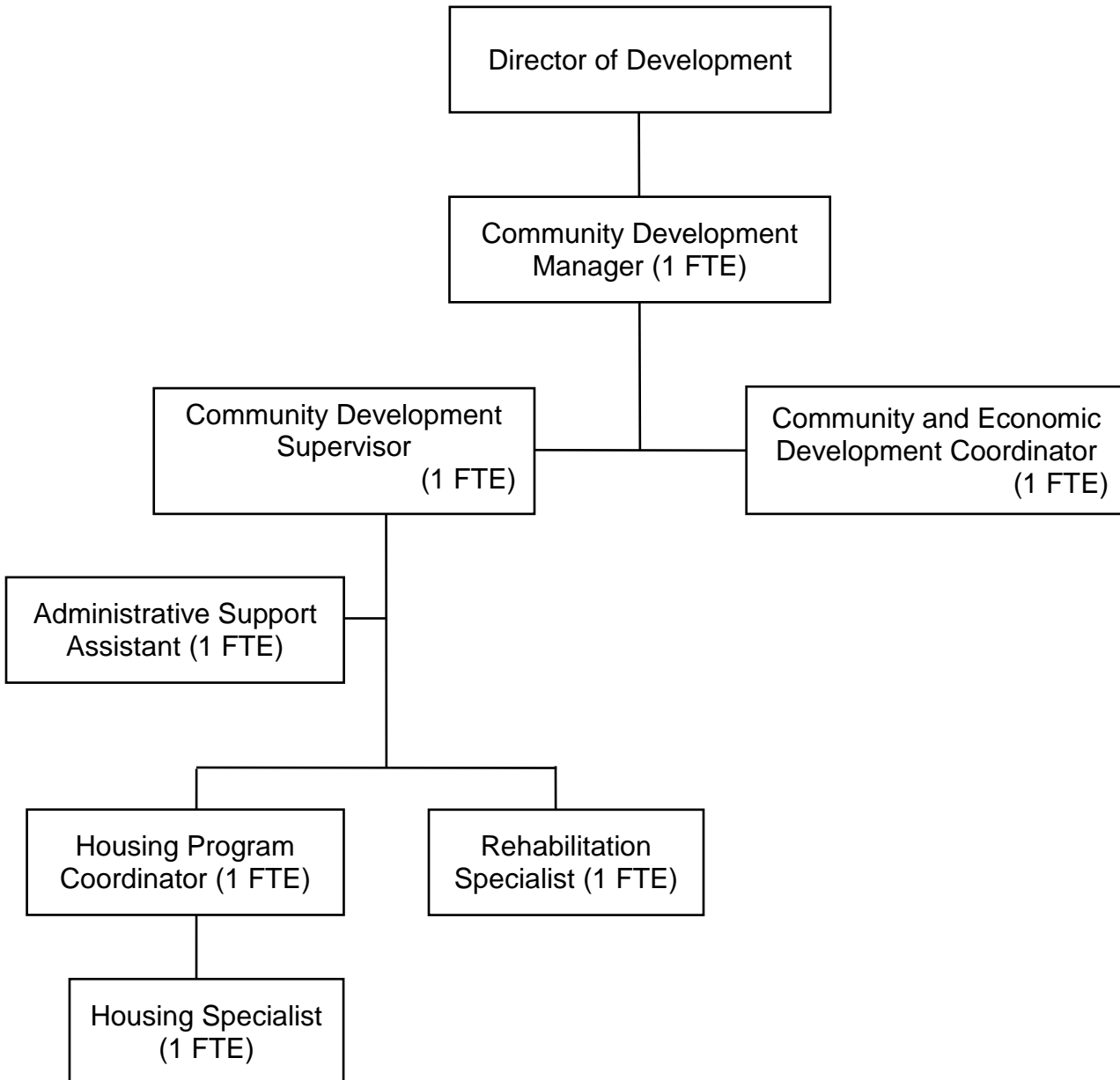
## DEVELOPMENT



CITY FUNDED FTES: 3.16  
OTHER FUNDING SOURCES FTES: 10.79



## COMMUNITY DEVELOPMENT

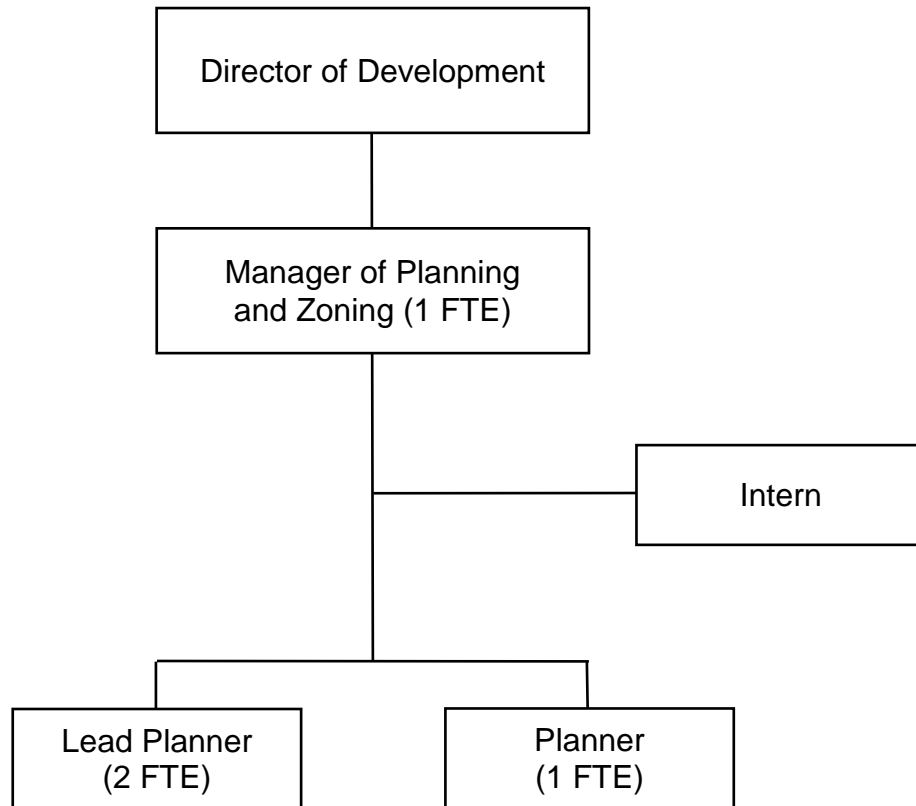


Note: Other personnel working in support of the Community Development Division are not included in the chart, however are funded by the Community Development Division (e.g., Accounting Specialist, Finance Department: 0.95).



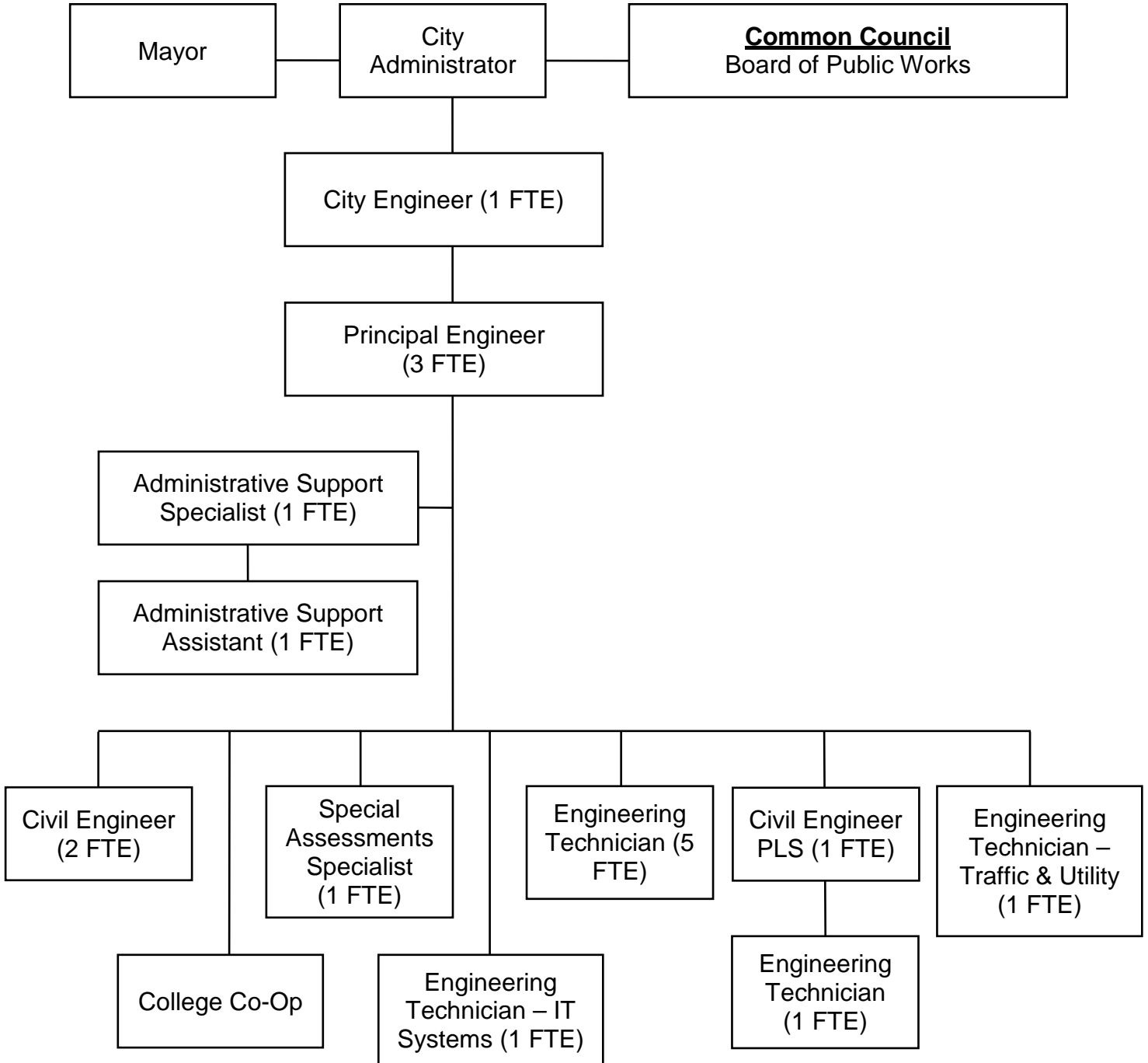


## PLANNING AND ZONING





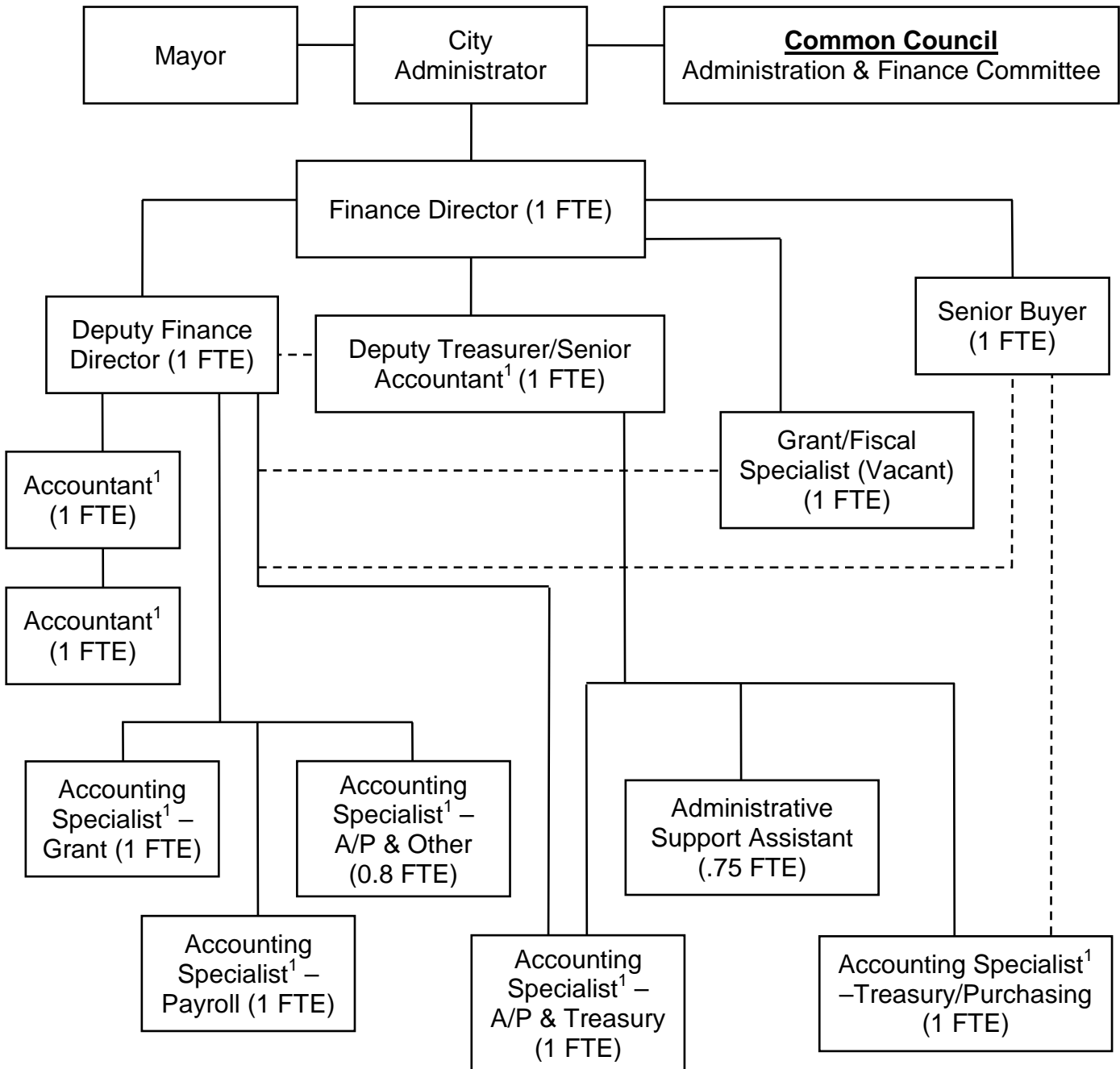
## ENGINEERING



CITY FUNDED FTES: 18.00



## FINANCE DEPARTMENT

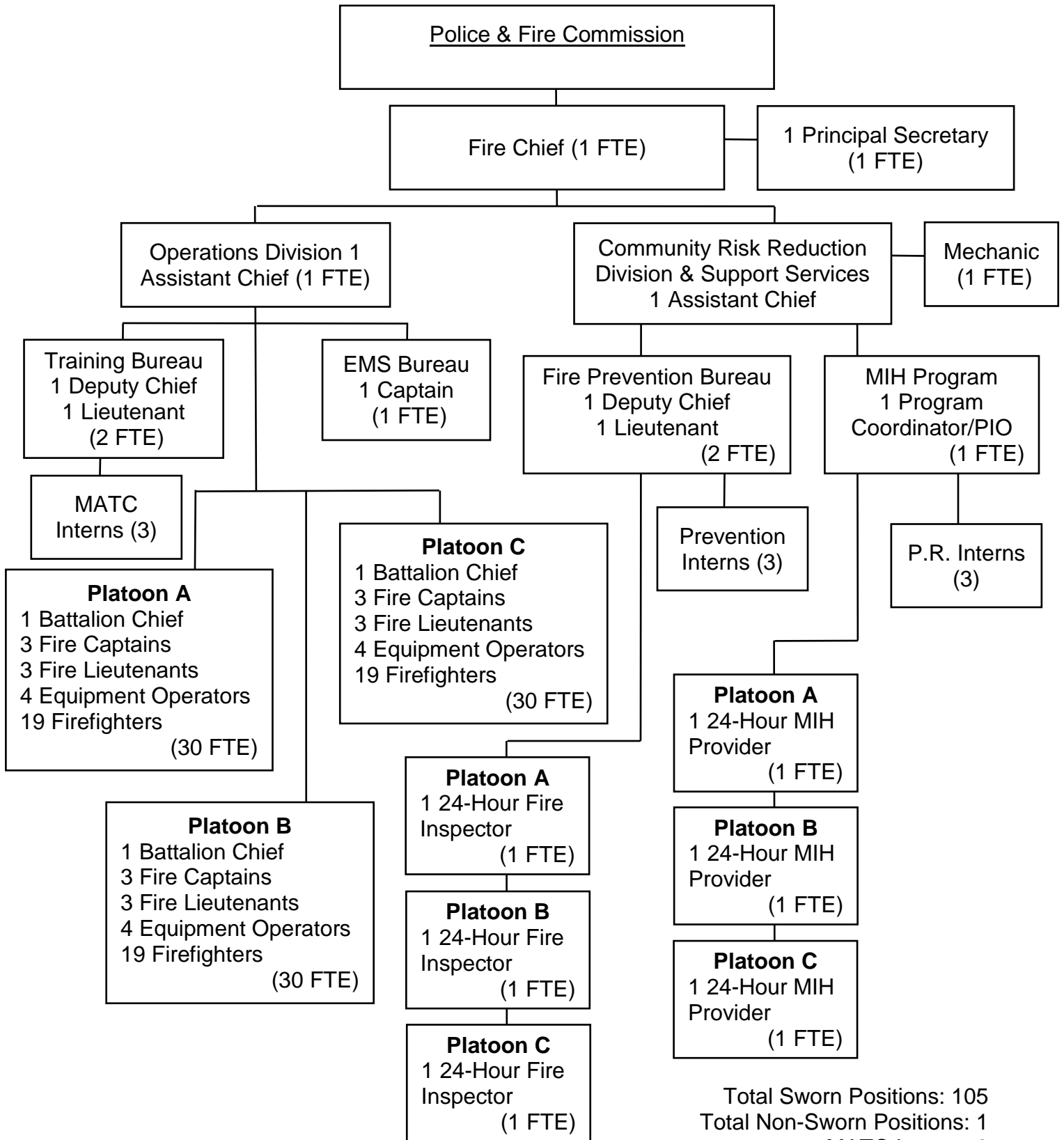


<sup>1</sup>Positions supported by various funding sources (e.g., various grants and utility funds; water, sewer, storm, solid waste; fund portions of the noted positions).

CITY FUNDED FTES: 8.80  
 Grants FTES: 1.00  
 Utility FTES: 2.75



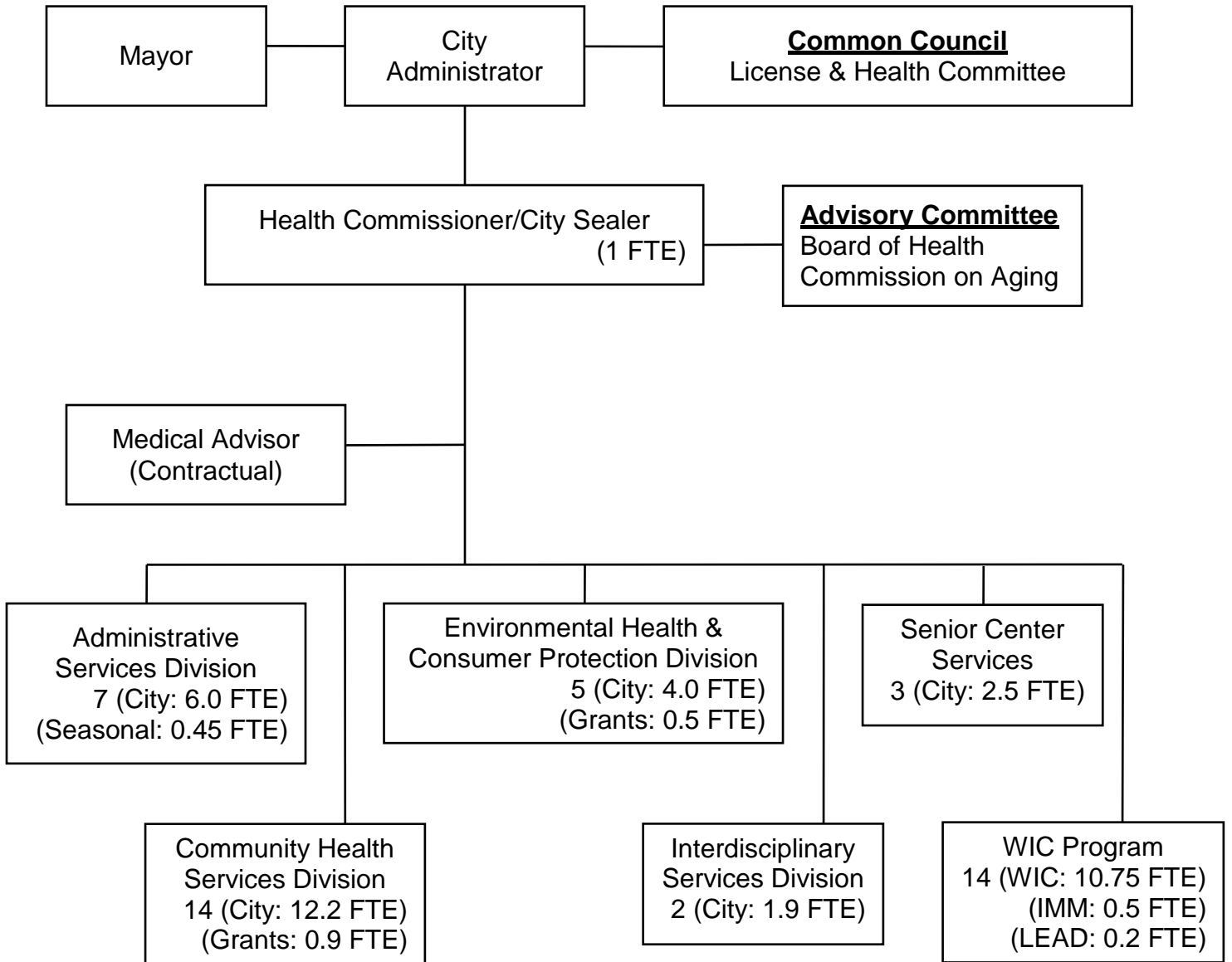
## FIRE



Total Sworn Positions: 105  
 Total Non-Sworn Positions: 1  
 MATC Interns: 9

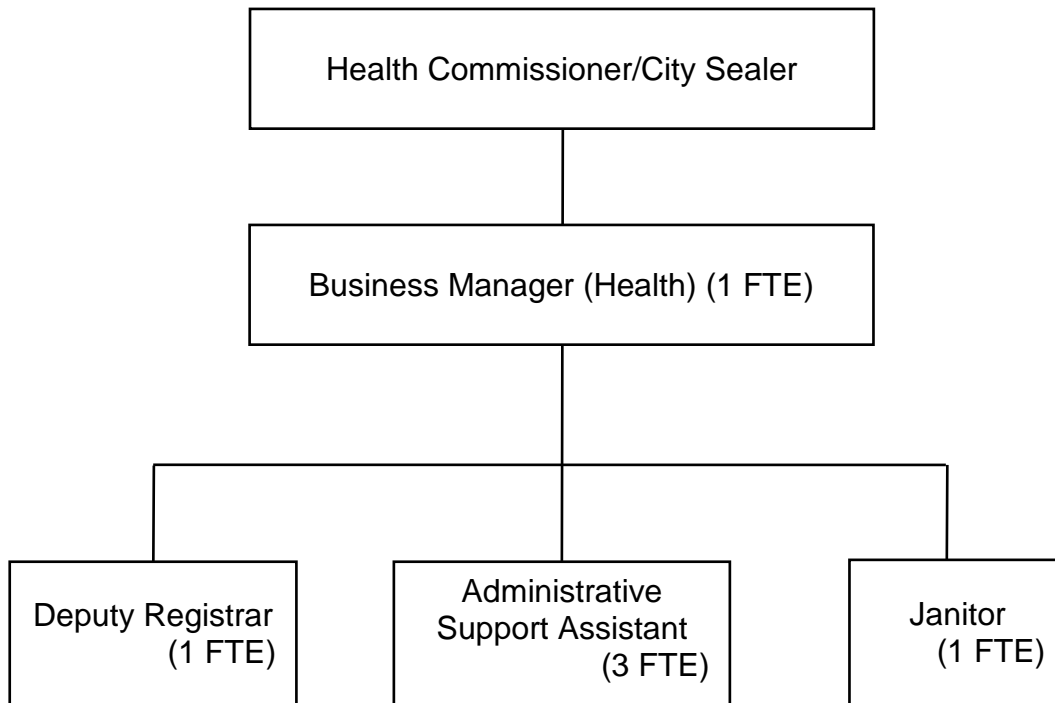


# HEALTH



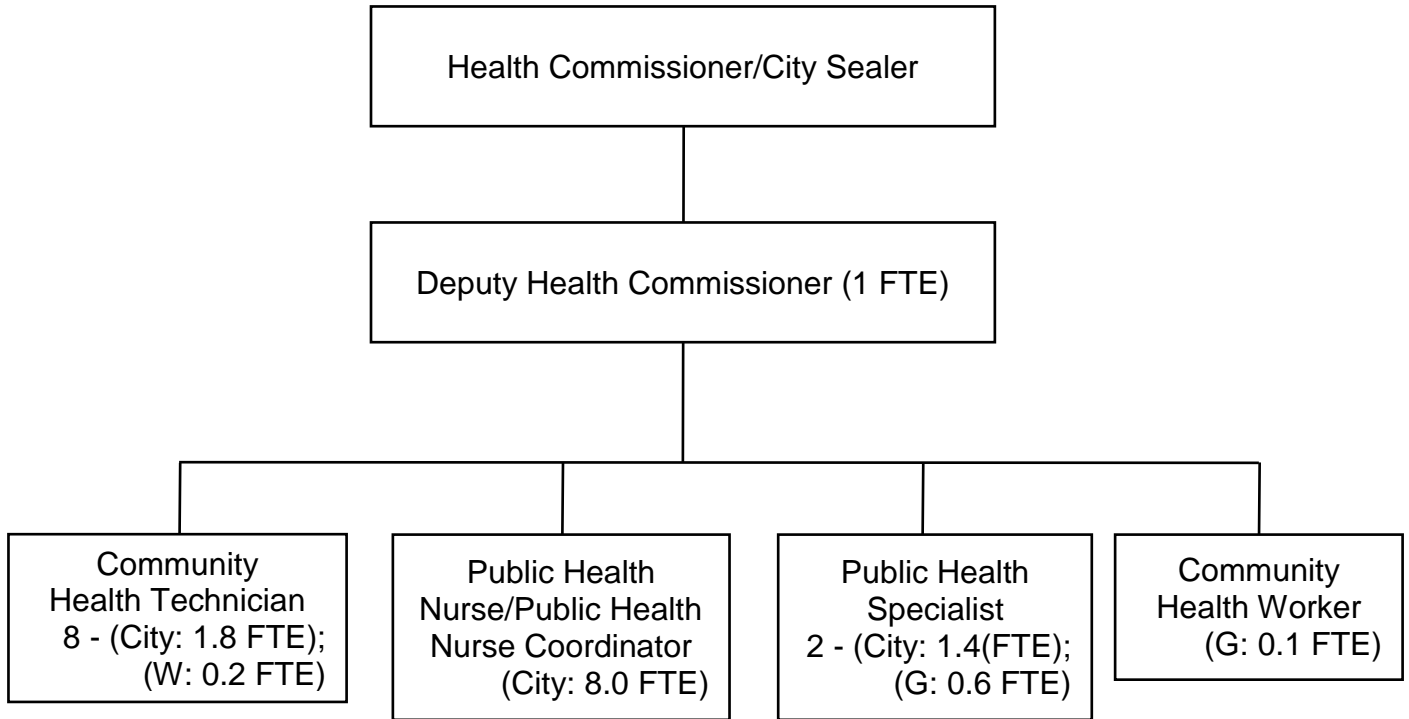


## HEALTH ADMINISTRATIVE SERVICES





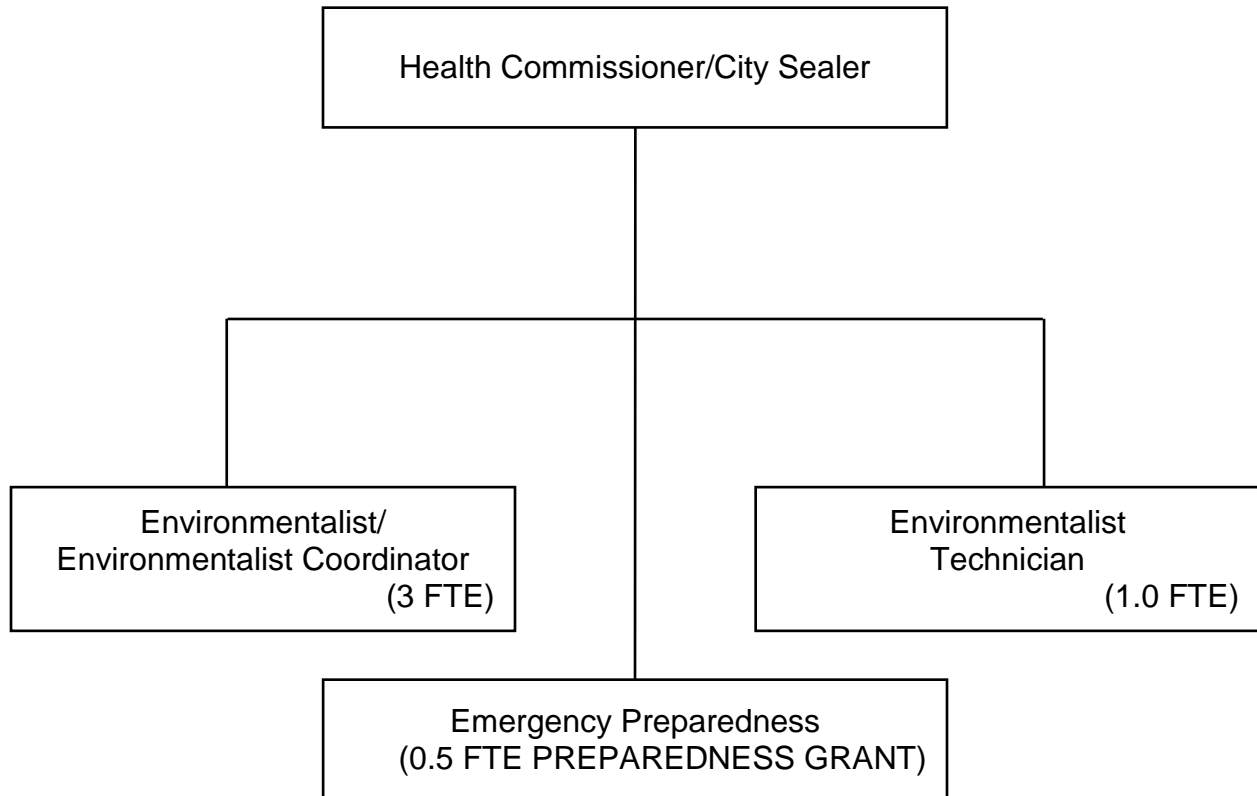
## HEALTH COMMUNITY HEALTH SERVICES



G=Funded by Grants  
W=Funded by WIC Grants



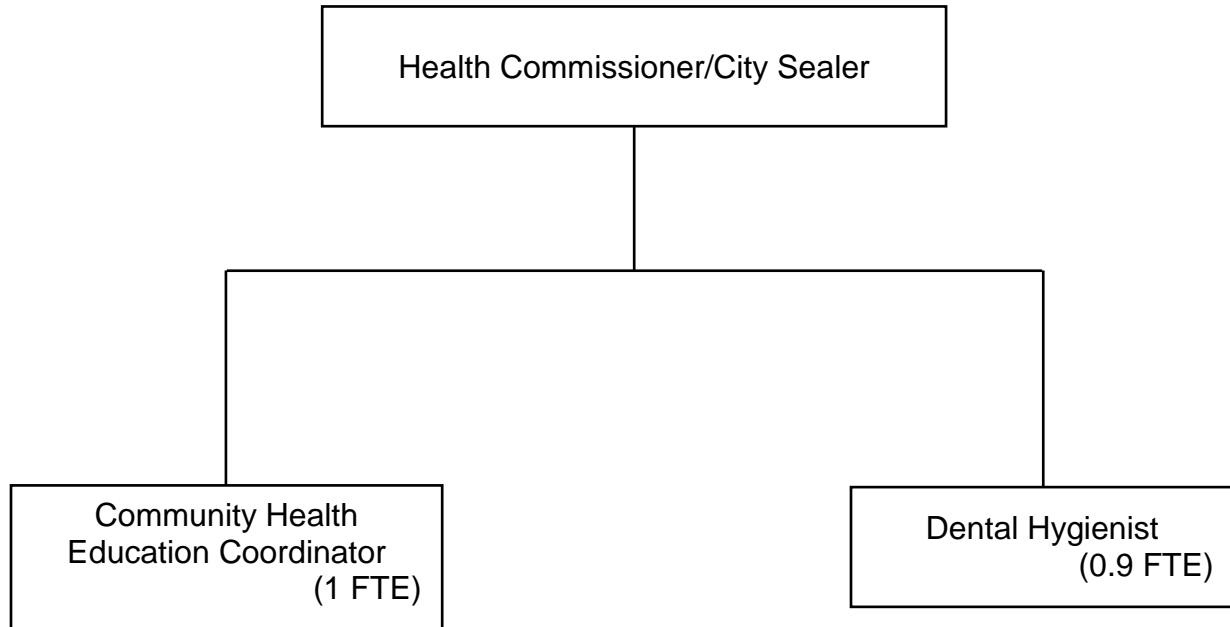
## HEALTH ENVIRONMENTAL HEALTH & CONSUMER PROTECTION





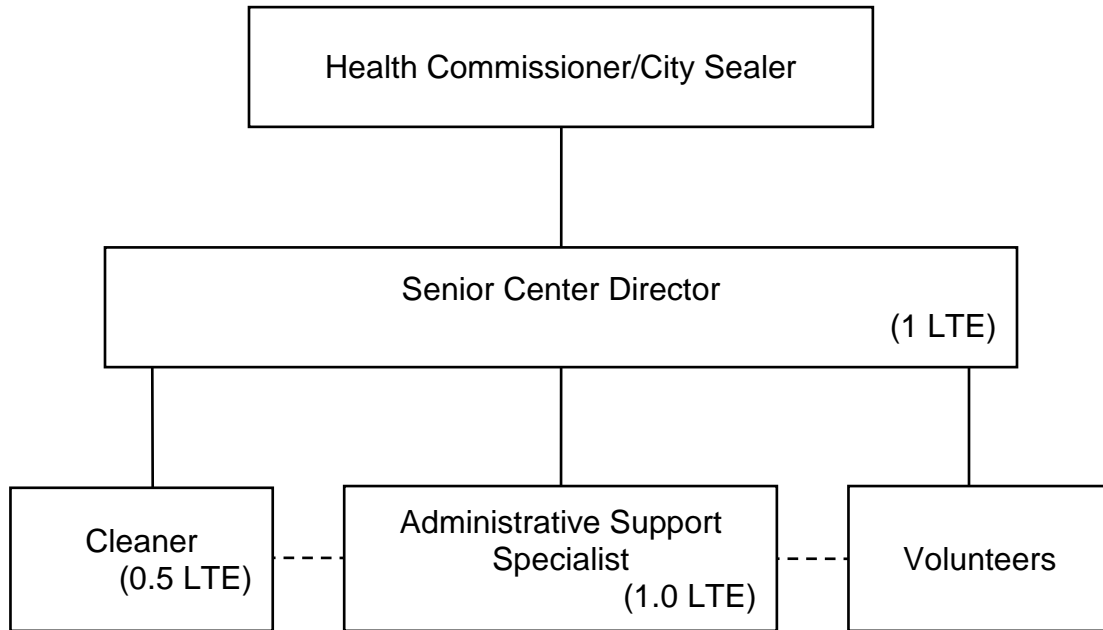


## HEALTH INTERDISCIPLINARY HEALTH SERVICES



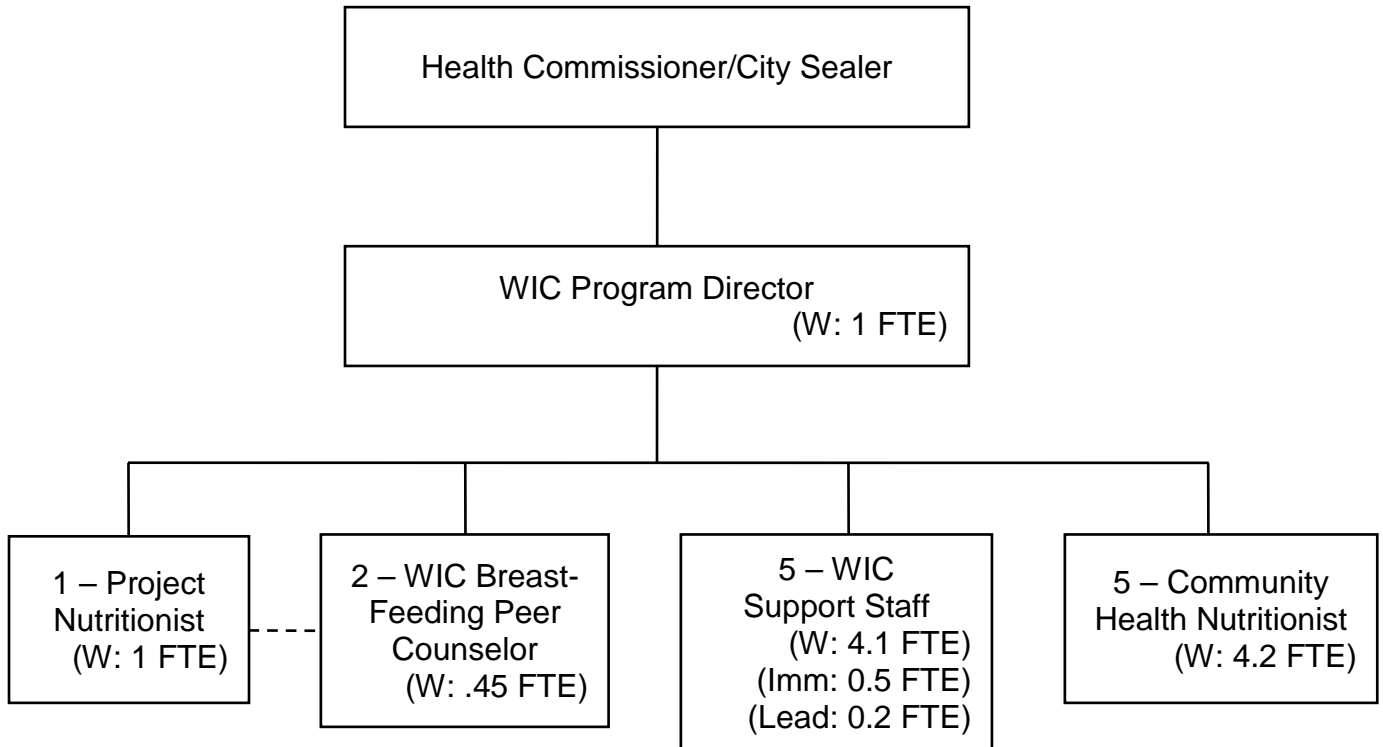


## HEALTH SENIOR CENTER





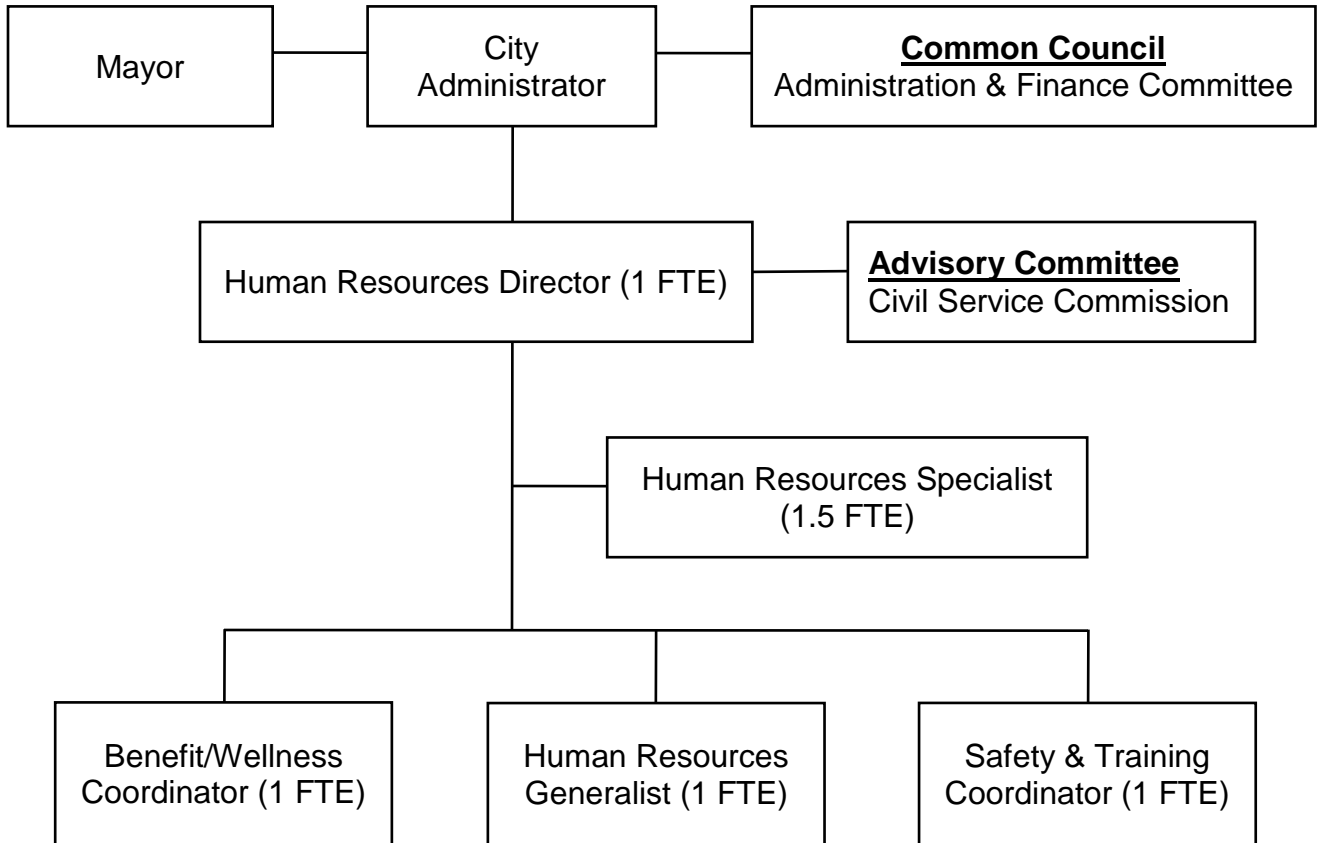
## HEALTH WOMEN, INFANTS AND CHILDREN (WIC) PROGRAM



G=Funded by Grants  
Imm =Funded by Immunization Grant  
Lead=Funded by Lead Grant  
W=Funded by WIC Grants



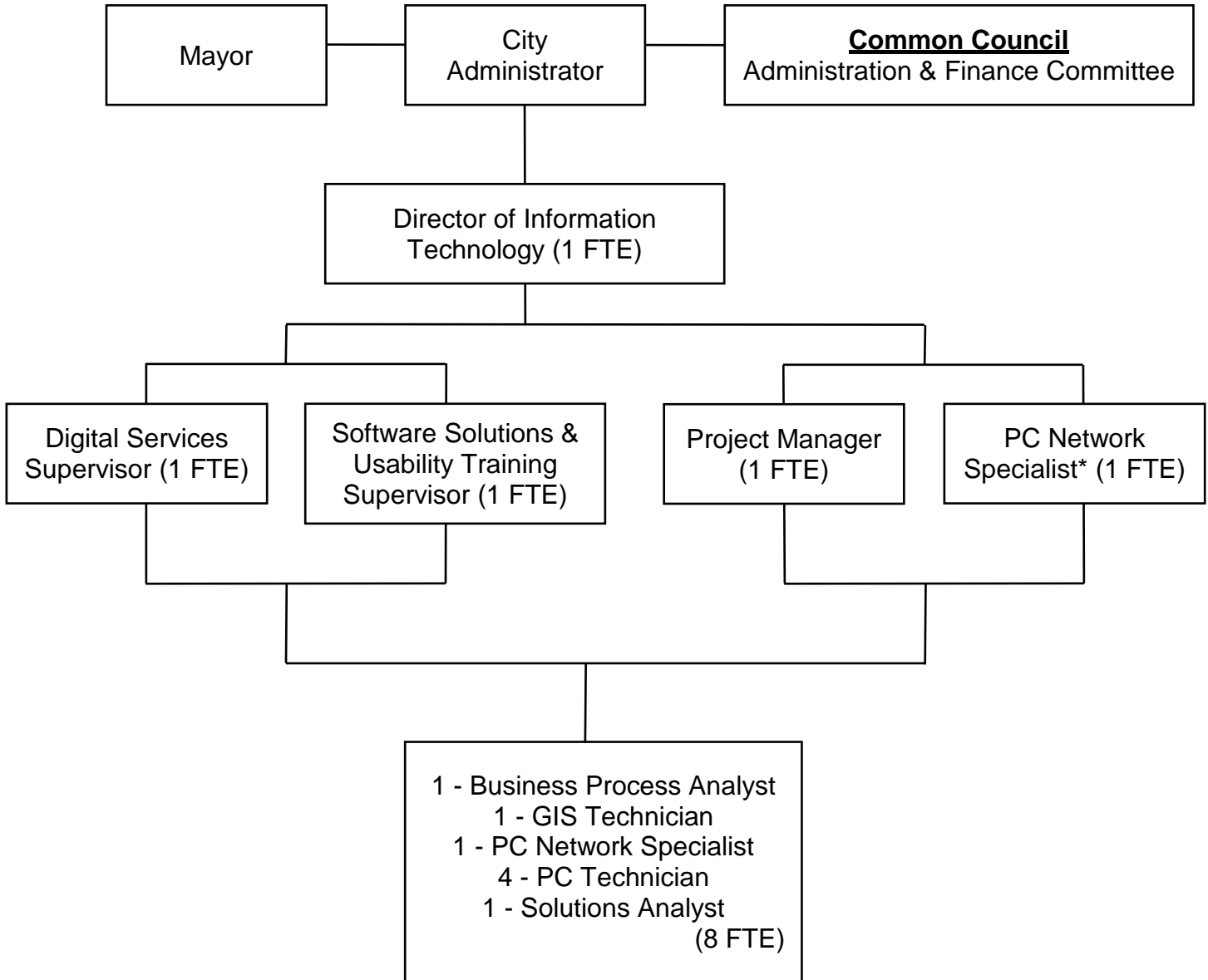
## HUMAN RESOURCES



CITY FUNDED FTES: 5.5



## INFORMATION TECHNOLOGY

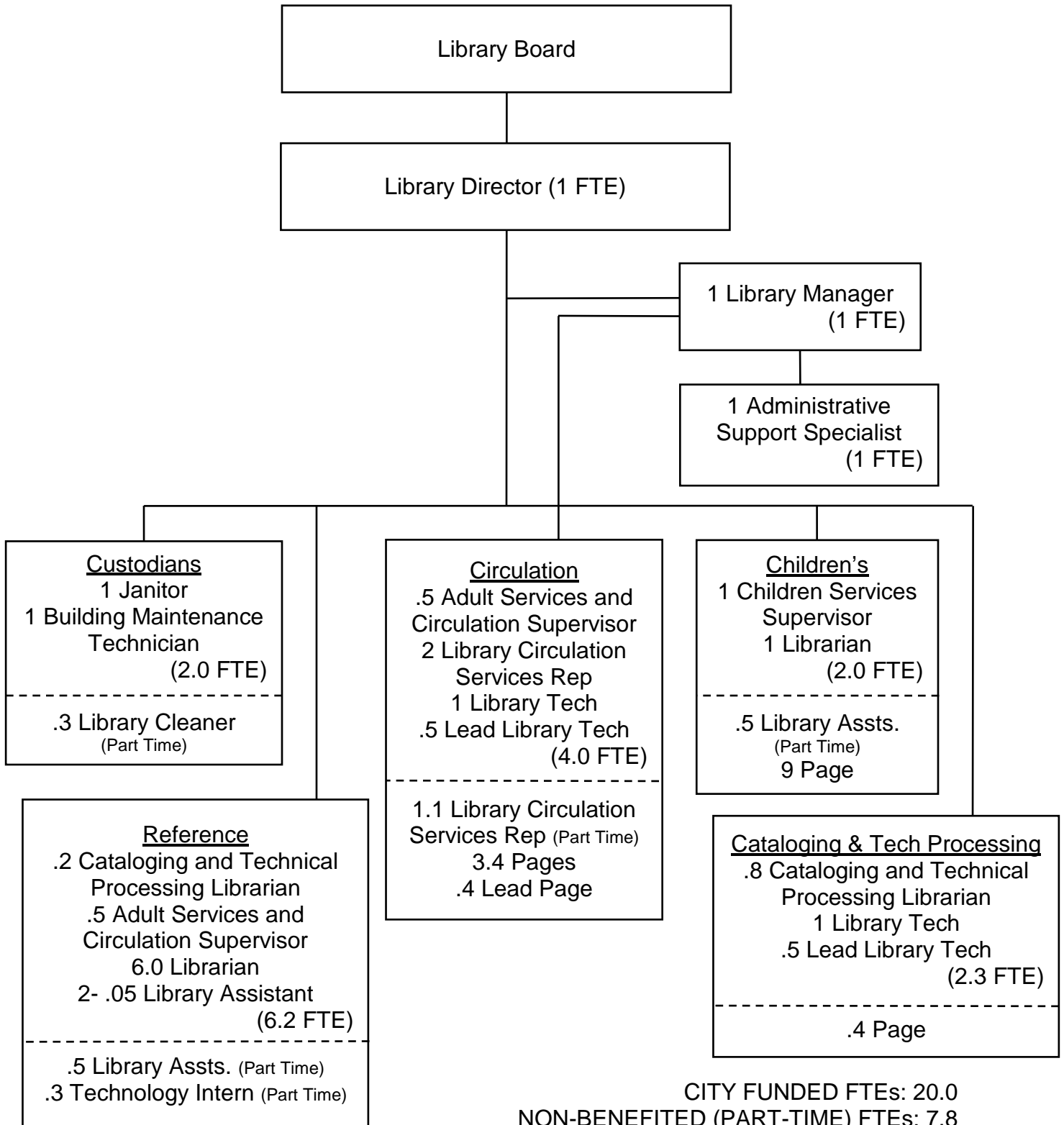


1 P.C. Network Specialist to support Police Department

CITY FUNDED FTES: 13.0



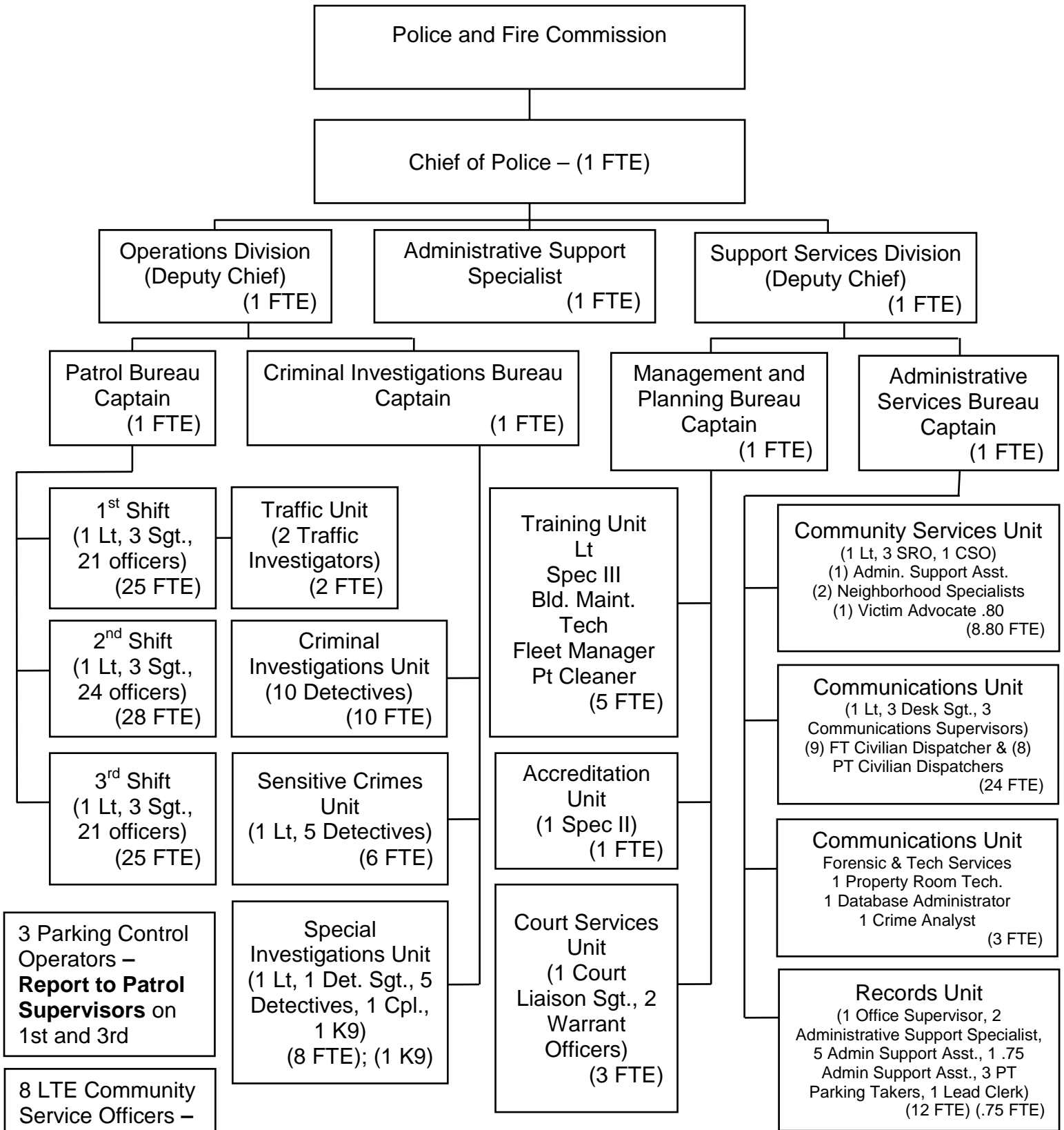
## LIBRARY



CITY FUNDED FTEs: 20.0  
 NON-BENEFITED (PART-TIME) FTEs: 7.8  
 TOTAL FTEs: 27.8



## POLICE



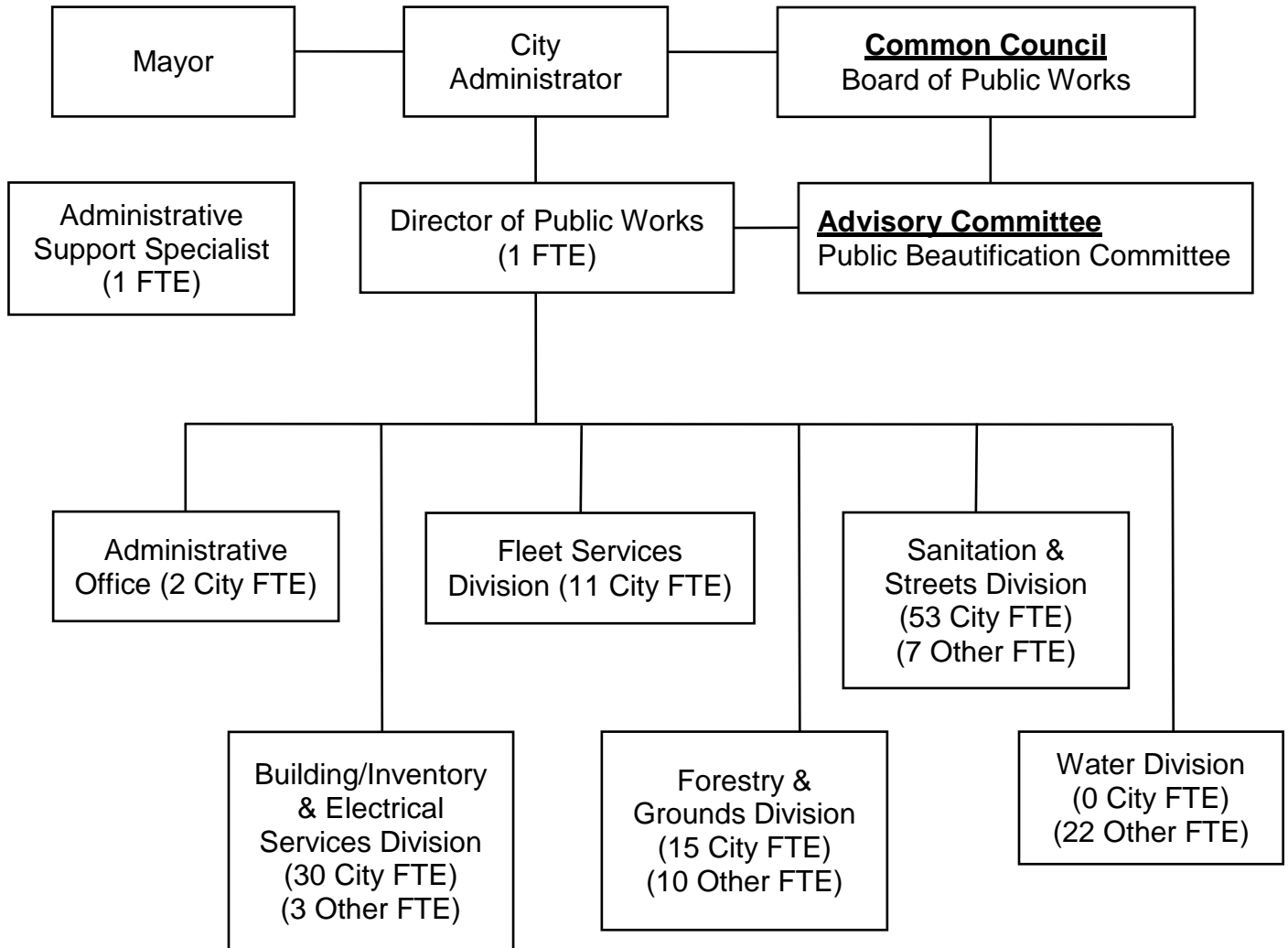
Total Sworn Positions: 126

Total Non-Sworn Positions: 34.55

Total Part-time Non-Sworn Positions: 20



## PUBLIC WORKS

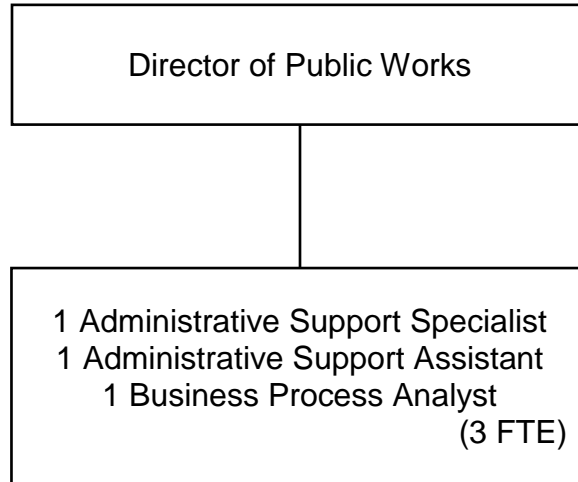


CITY FUNDED FTEs: 115  
OTHER FUNDING SOURCES FTEs: 42



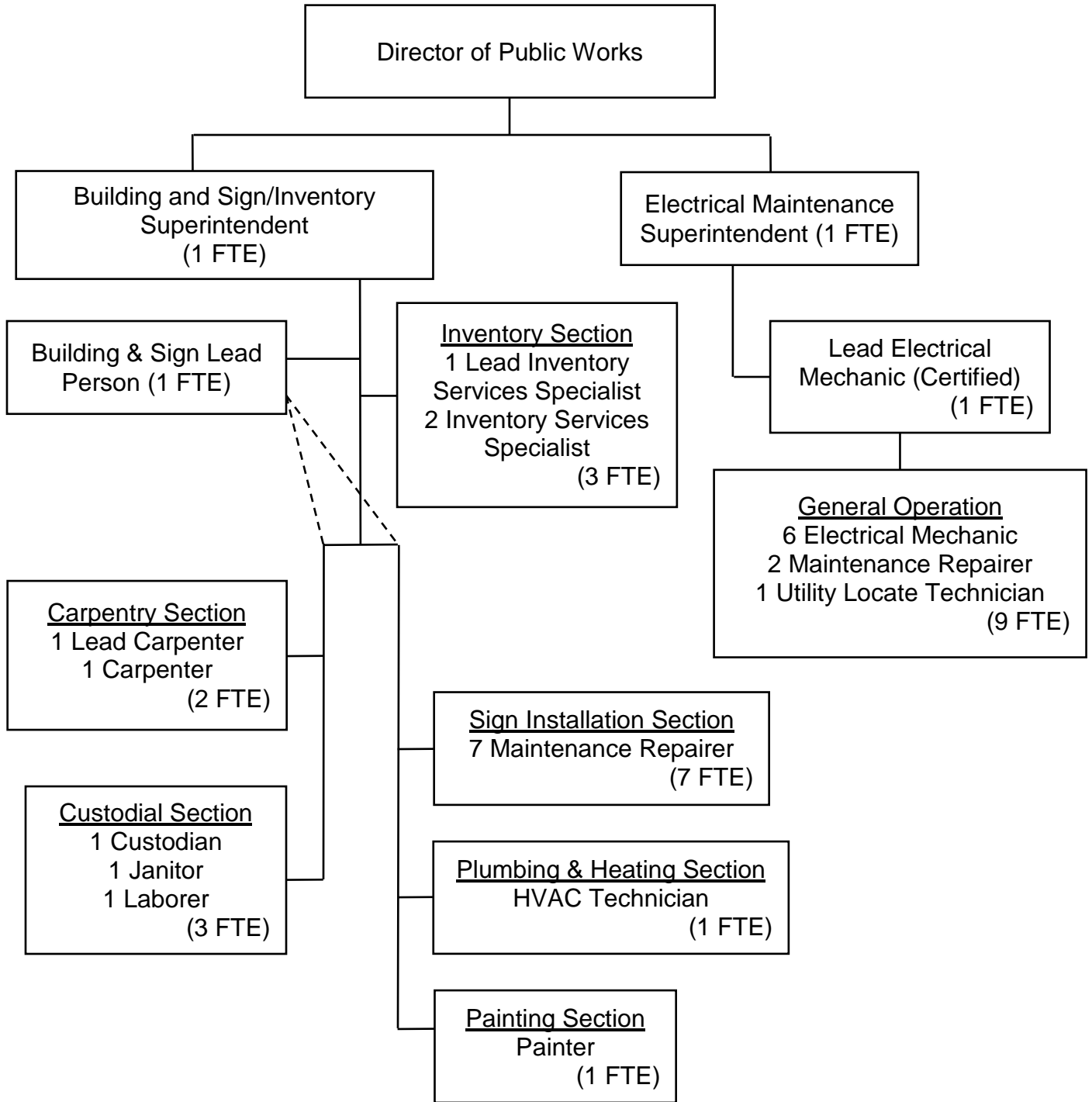


## PUBLIC WORKS ADMINISTRATIVE OFFICE





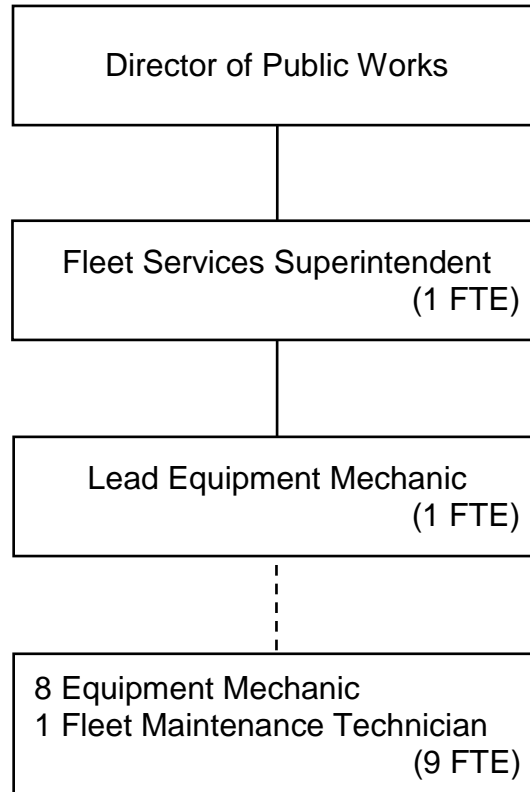
## PUBLIC WORKS BUILDING/INVENTORY AND ELECTRICAL SERVICES



Org Chart Does not reflect the seasonal temporary laborer positions.

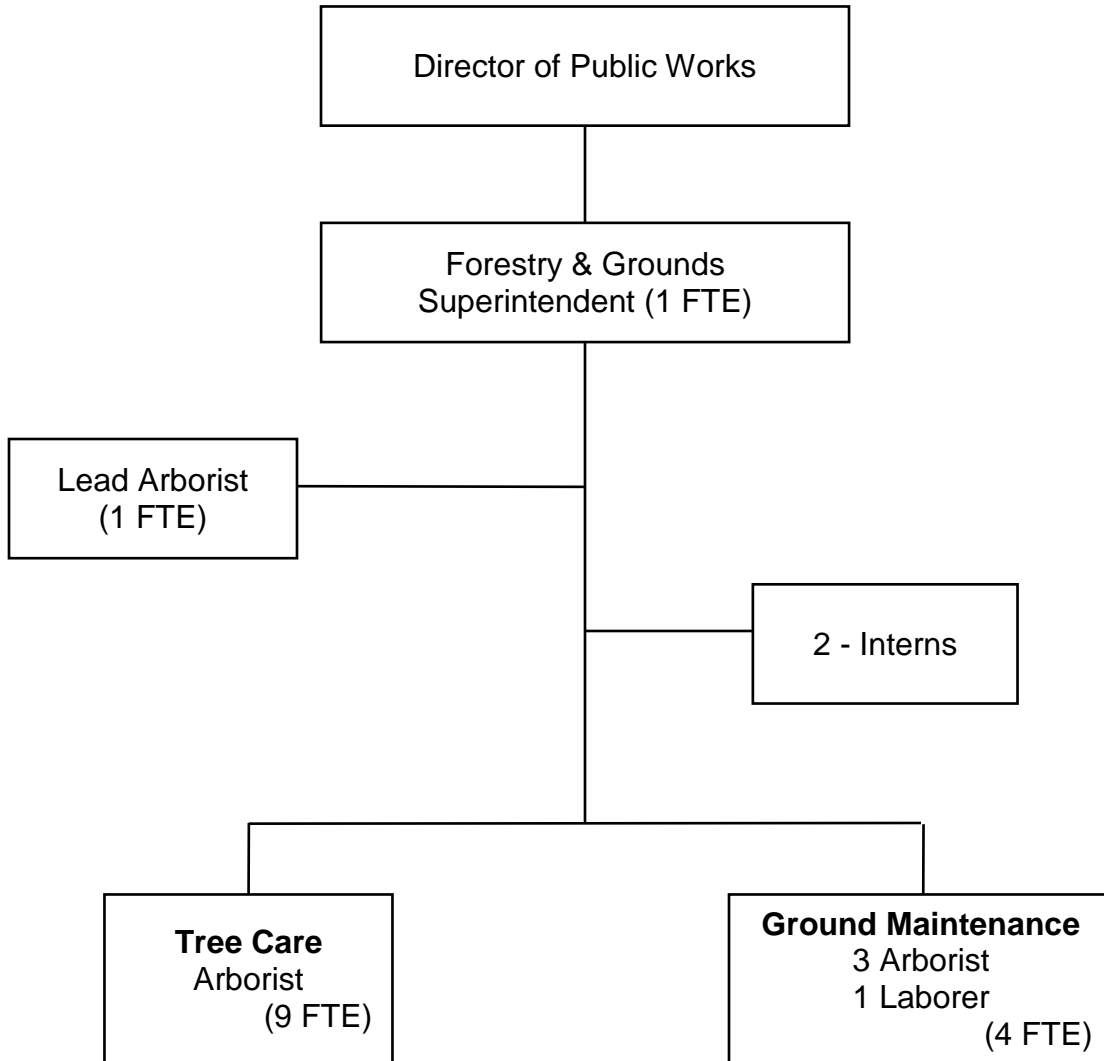


## PUBLIC WORKS FLEET SERVICES





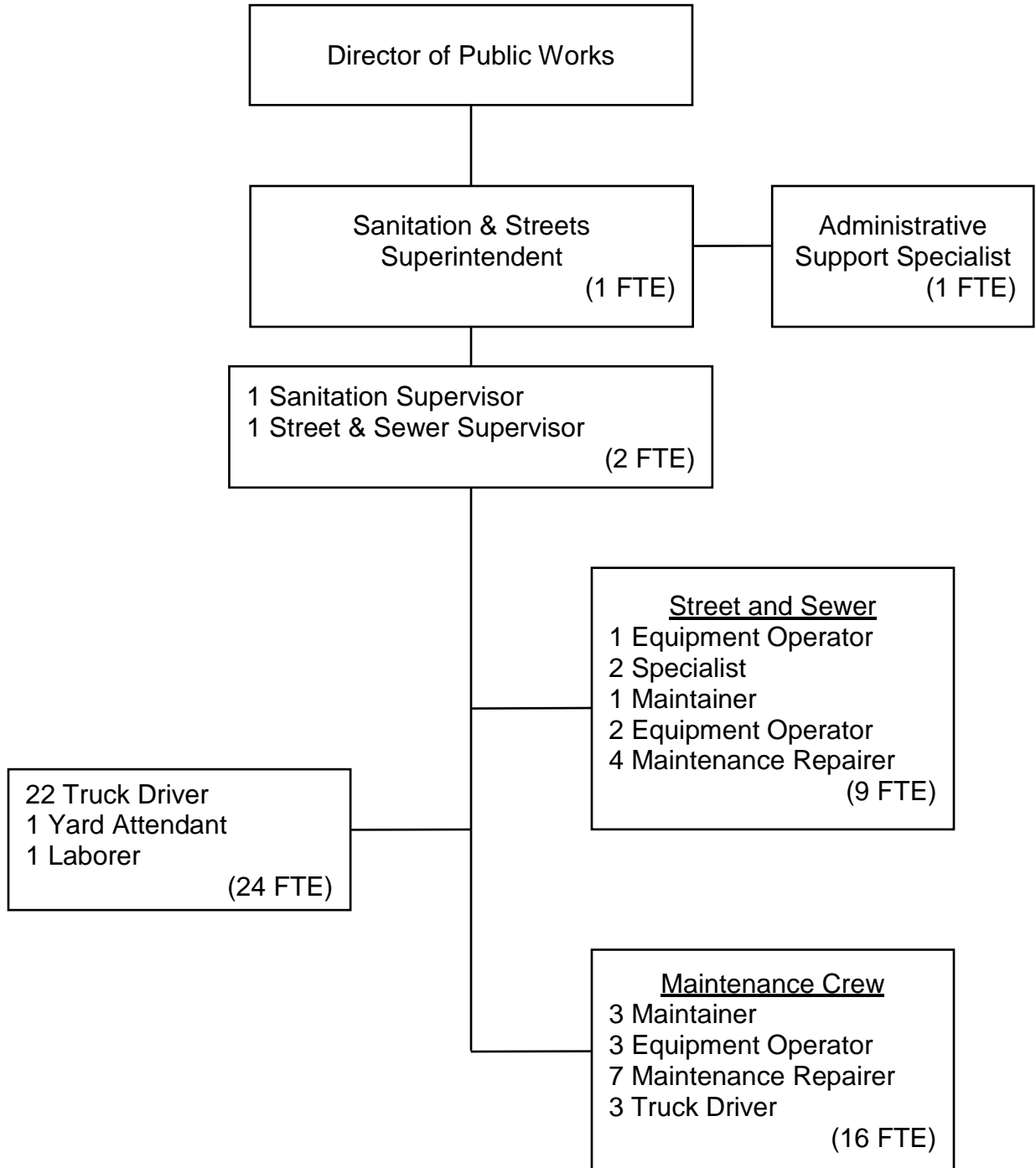
## PUBLIC WORKS FORESTRY & GROUNDS



Org Chart does not reflect the seasonal temporary laborer positions.



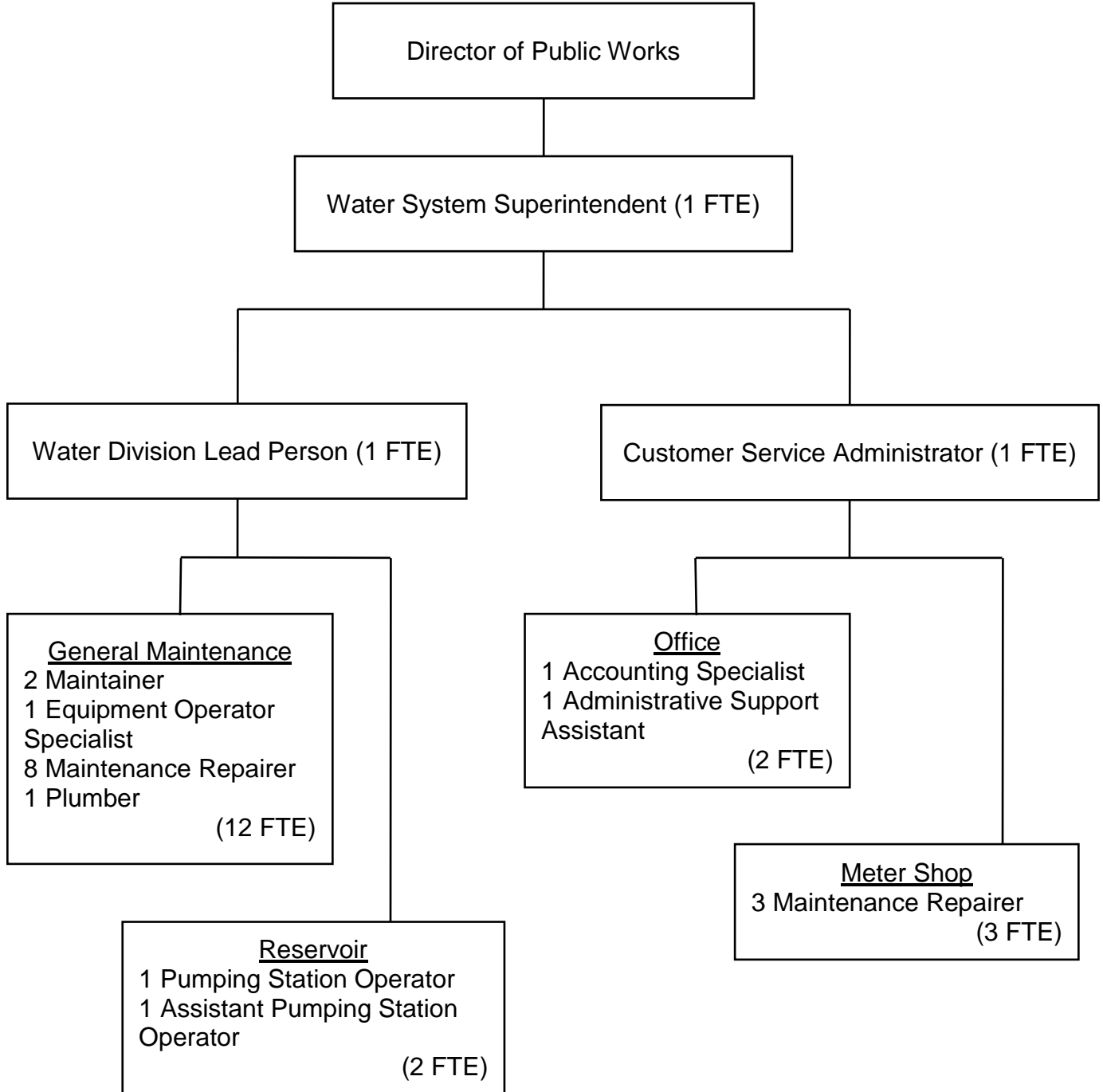
## PUBLIC WORKS SANITATION & STREETS



Org Chart does not reflect the seasonal temporary laborer positions.



## PUBLIC WORKS WATER



NOTE: Other personnel working in support of the Water Utility (A&F, Treasurer, PW, IT) are also funded by the Water Utility, but are not included on this chart. Further, some of the positions reflected above on this chart also perform work funded by other Utility Budgets (Sanitary, Storm, etc.).